

Římský sarkofág 2

římský sarkofág - náhrobek (Cesarea), Izrael
21 May 2020



Survey Data

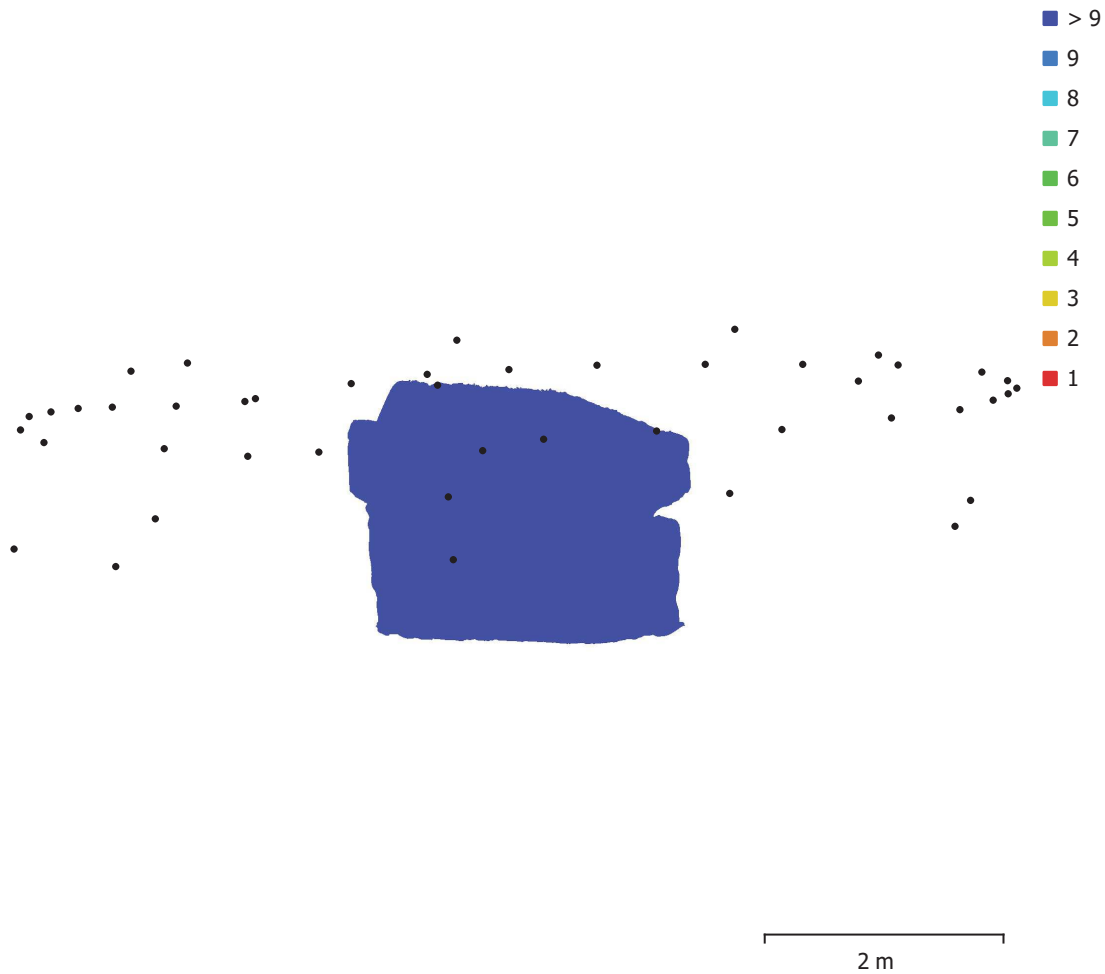


Fig. 1. Camera locations and image overlap.

Number of images:	45	Camera stations:	45
Flying altitude:	3.24 m	Tie points:	72,845
Ground resolution:	0.838 mm/pix	Projections:	199,776
Coverage area:	5.34 m ²	Reprojection error:	0.578 pix

Camera Model	Resolution	Focal Length	Pixel Size	Precalibrated
G700 SE (5.9mm)	4000 x 3000	5.9 mm	unknown	No

Table 1. Cameras.

Camera Calibration

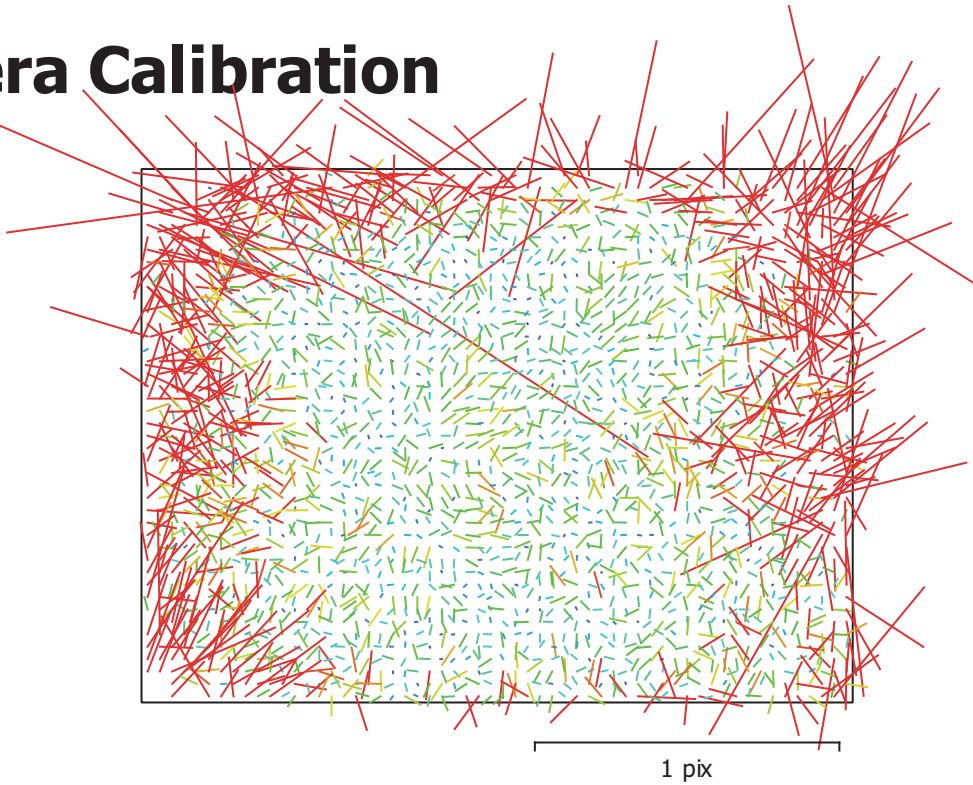


Fig. 2. Image residuals for G700 SE (5.9mm).

G700 SE (5.9mm)

45 images

Type Resolution Focal Length Pixel Size
Frame 4000 x 3000 5.9 mm unknown

	Value	Error	F	Cx	Cy	B1	B2	K1	K2	P1	P2
F	3876.99	0.099	1.00	-0.02	-0.13	-0.19	-0.02	-0.41	0.43	-0.05	-0.10
Cx	15.0215	0.16		1.00	0.00	0.01	-0.06	0.01	-0.01	0.92	0.01
Cy	-5.41222	0.11			1.00	0.00	0.03	0.09	-0.01	0.02	0.75
B1	2.24672	0.028				1.00	-0.01	-0.04	0.04	0.06	0.00
B2	0.947564	0.026					1.00	0.02	-0.00	-0.08	0.09
K1	0.0121232	8e-005						1.00	-0.93	0.04	0.10
K2	-0.00633746	0.0002							1.00	-0.04	0.05
P1	0.00078298	1.6e-005								1.00	0.04
P2	0.000862299	1e-005									1.00

Table 2. Calibration coefficients and correlation matrix.

Processing Parameters

General

Cameras	45
Aligned cameras	45
Coordinate system	WGS 84 (EPSG::4326)
Rotation angles	Yaw, Pitch, Roll

Point Cloud

Points	72,845 of 94,532
RMS reprojection error	0.11188 (0.578454 pix)
Max reprojection error	0.333201 (19.593 pix)
Mean key point size	4.33224 pix
Point colors	3 bands, uint8
Key points	No
Average tie point multiplicity	2.71567

Alignment parameters

Accuracy	High
Generic preselection	Yes
Reference preselection	No
Key point limit	120,000
Tie point limit	0
Adaptive camera model fitting	Yes
Matching time	1 minutes 47 seconds
Alignment time	14 seconds
Software version	1.5.2.7838

Depth Maps

Count	45
-------	----

Depth maps generation parameters

Quality	High
Filtering mode	Mild
Processing time	5 minutes 4 seconds
Software version	1.5.2.7838

Dense Point Cloud

Points	6,612,994
Point colors	3 bands, uint8

Depth maps generation parameters

Quality	High
Filtering mode	Mild
Processing time	5 minutes 4 seconds

Dense cloud generation parameters

Processing time	3 minutes 17 seconds
Software version	1.5.2.7838

Model

Faces	438,122
Vertices	219,539
Vertex colors	3 bands, uint8
Texture	4,096 x 4,096, 4 bands, uint8

Depth maps generation parameters

Quality	High
Filtering mode	Mild
Processing time	5 minutes 4 seconds

Reconstruction parameters

Surface type	Arbitrary
--------------	-----------

General

Source data	Dense cloud
Interpolation	Enabled
Strict volumetric masks	No
Processing time	5 minutes 7 seconds

Texturing parameters

Blending mode	Mosaic
Texture size	4,096
Enable hole filling	Yes
Enable ghosting filter	Yes
UV mapping time	35 seconds
Blending time	1 minutes 45 seconds
Software version	1.5.2.7838

Software

Version	1.5.2 build 7838
Platform	Windows 64