

Chrám - vnější část

malá chrámová stavba z hinduistické svatyně Pashupatinath v Kathmandu (Nepál)

21 May 2020



Survey Data

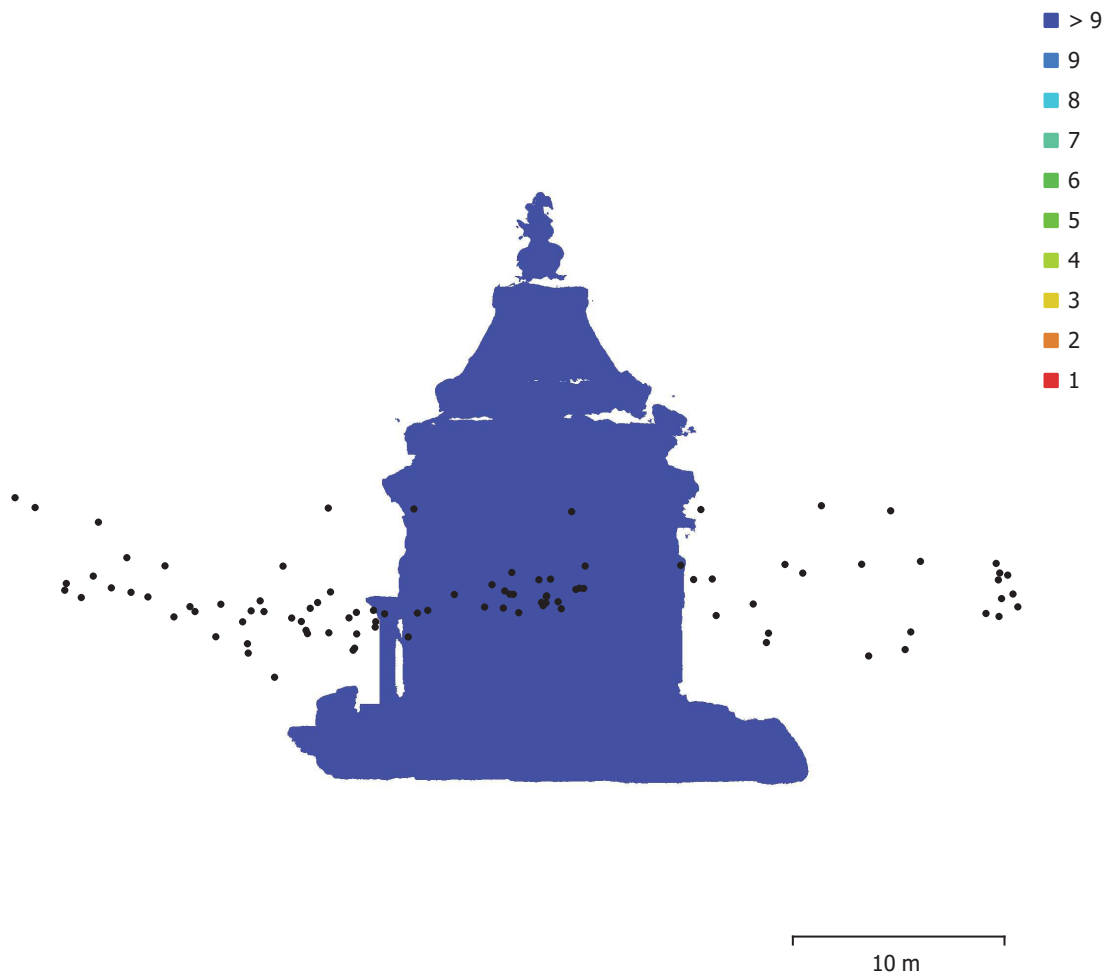


Fig. 1. Camera locations and image overlap.

Number of images:	96	Camera stations:	96
Flying altitude:	12.4 m	Tie points:	190,149
Ground resolution:	4.27 mm/pix	Projections:	513,108
Coverage area:	314 m ²	Reprojection error:	0.76 pix

Camera Model	Resolution	Focal Length	Pixel Size	Precalibrated
DSC-HX5V (4.25mm)	3648 x 2736	4.25 mm	unknown	No

Table 1. Cameras.

Camera Calibration

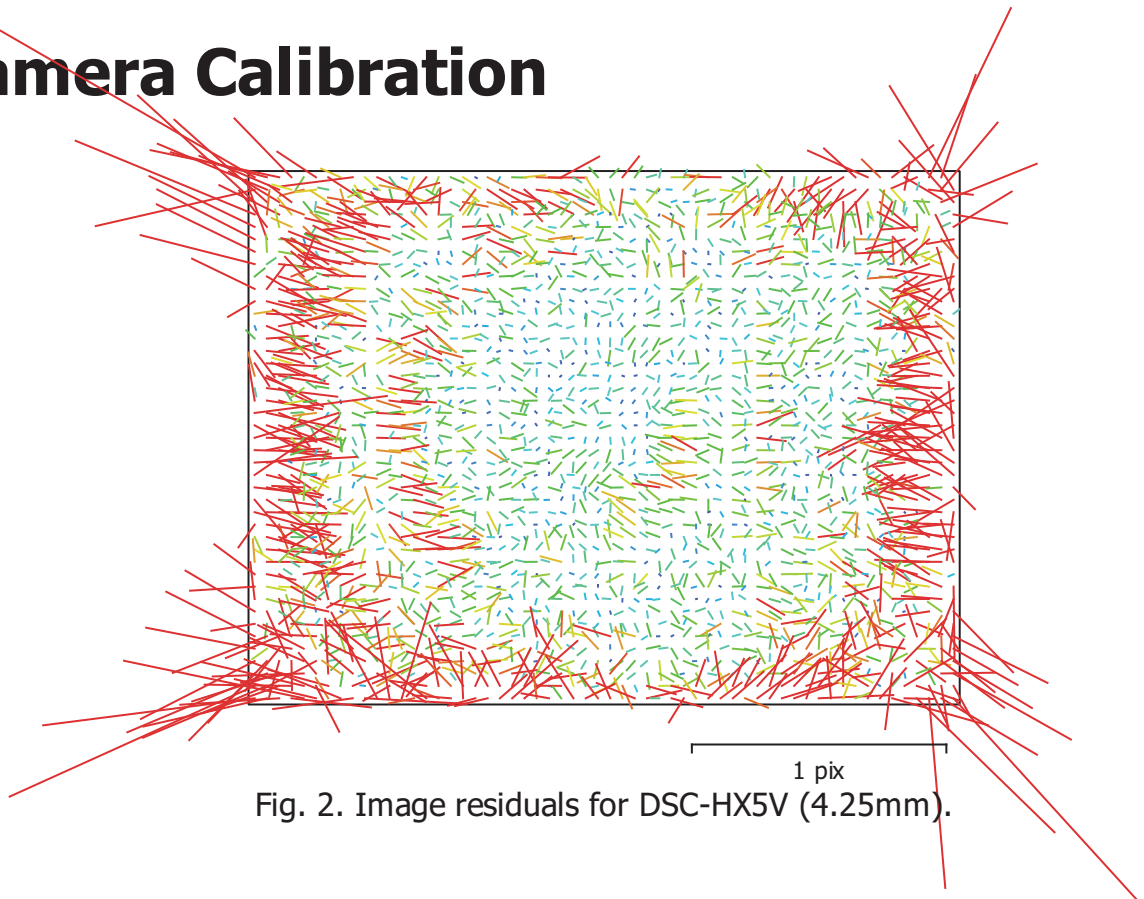


Fig. 2. Image residuals for DSC-HX5V (4.25mm).

DSC-HX5V (4.25mm)

96 images

Type	Resolution	Focal Length	Pixel Size
Frame	3648 x 2736	4.25 mm	unknown

	Value	Error	F	B1	K1	K2	P1	P2
F	2574.22	0.074	1.00	-0.31	0.10	0.14	0.10	-0.03
B1	1.68443	0.056		1.00	0.12	-0.03	-0.28	-0.07
K1	-0.00453464	4e-005			1.00	-0.88	-0.07	0.06
K2	0.00361237	5.9e-005				1.00	0.04	-0.04
P1	0.000157183	4.3e-006					1.00	-0.04
P2	-1.83052e-005	4.4e-006						1.00

Table 2. Calibration coefficients and correlation matrix.

Processing Parameters

General

Cameras	96
Aligned cameras	96
Markers	6
Coordinate system	Local Coordinates (m)
Rotation angles	Yaw, Pitch, Roll

Point Cloud

Points	190,149 of 219,923
RMS reprojection error	0.13923 (0.76026 pix)
Max reprojection error	0.419944 (24.6611 pix)
Mean key point size	5.34216 pix
Point colors	3 bands, uint8
Key points	No
Average tie point multiplicity	2.7346

Alignment parameters

Accuracy	High
Generic preselection	Yes
Key point limit	120,000
Tie point limit	0
Adaptive camera model fitting	Yes
Matching time	5 minutes 46 seconds
Alignment time	57 seconds
Software version	1.5.2.7838

Depth Maps

Count	96
Depth maps generation parameters	
Quality	High
Filtering mode	Mild
Processing time	10 minutes 27 seconds

Dense Point Cloud

Points	22,052,734
Point colors	3 bands, uint8
Depth maps generation parameters	
Quality	High
Filtering mode	Mild
Processing time	10 minutes 27 seconds
Dense cloud generation parameters	
Processing time	15 minutes 1 seconds
Software version	1.5.2.7838

Model

Faces	4,410,546
Vertices	2,210,043
Vertex colors	3 bands, uint8
Depth maps generation parameters	
Quality	High
Filtering mode	Mild
Processing time	10 minutes 27 seconds
Reconstruction parameters	
Surface type	Arbitrary
Source data	Dense cloud
Interpolation	Enabled

General

Strict volumetric masks	No
Processing time	18 minutes 59 seconds
Software version	1.5.2.7838

Software

Version	1.5.2 build 7838
Platform	Windows 64