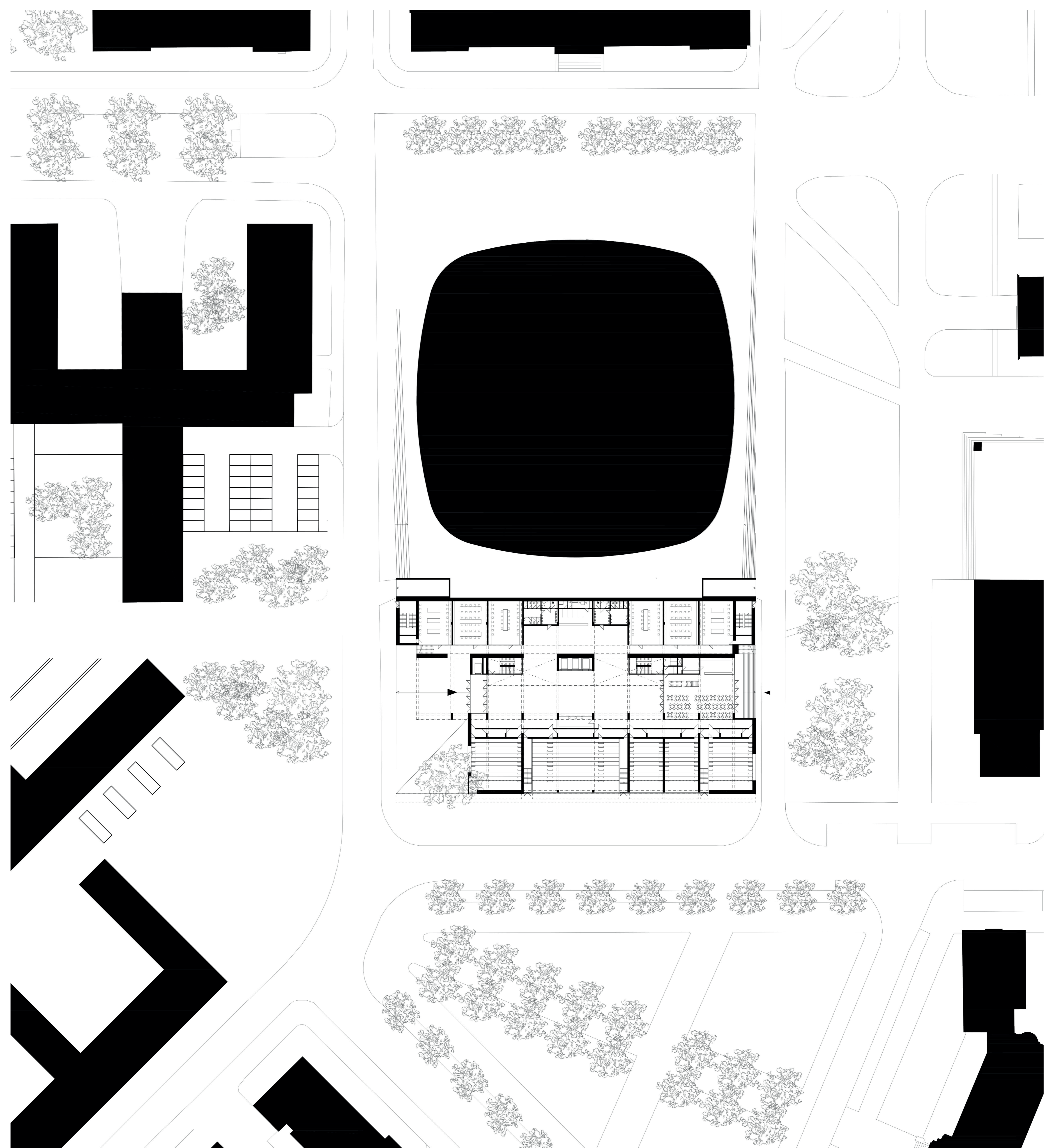
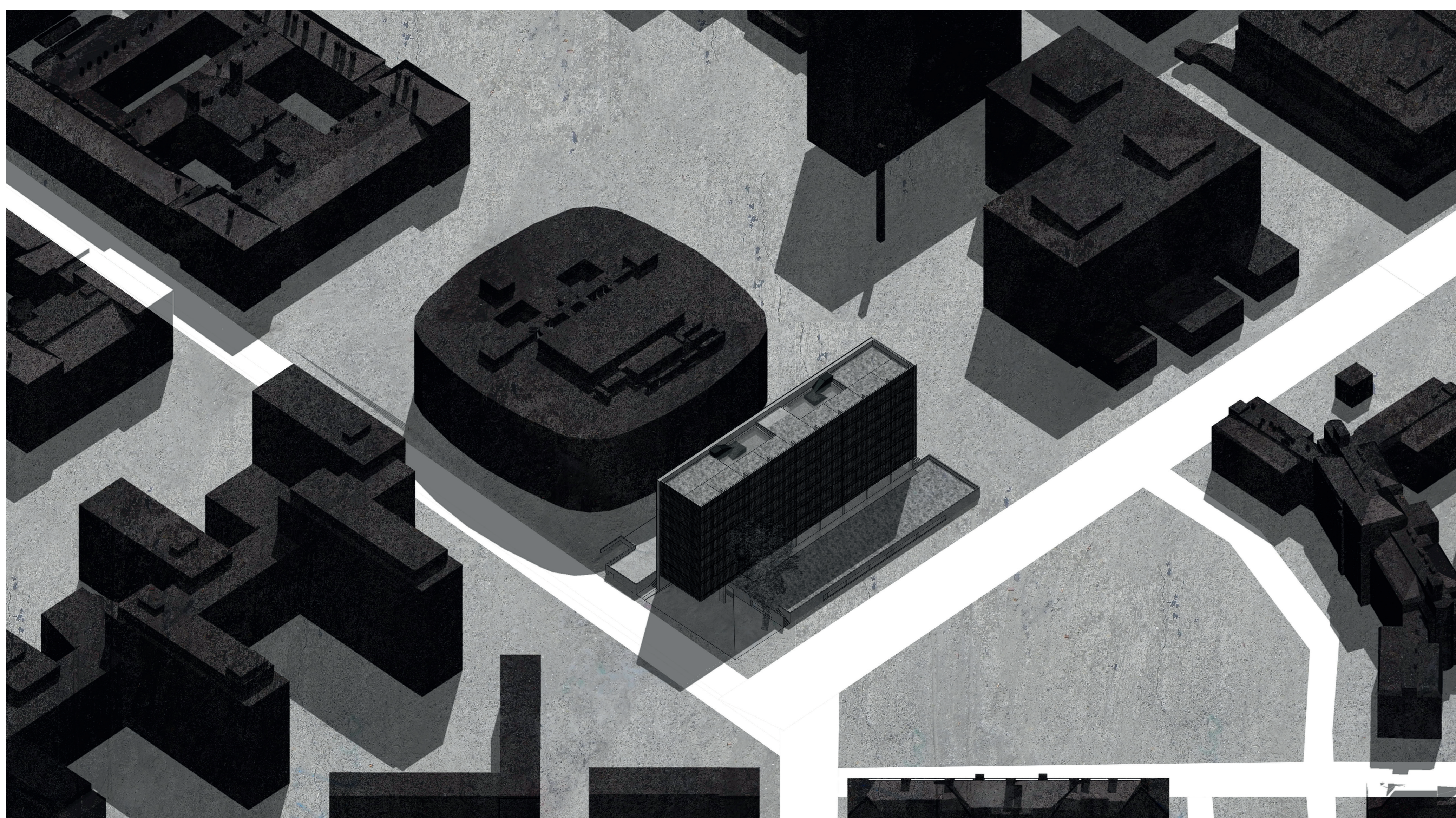


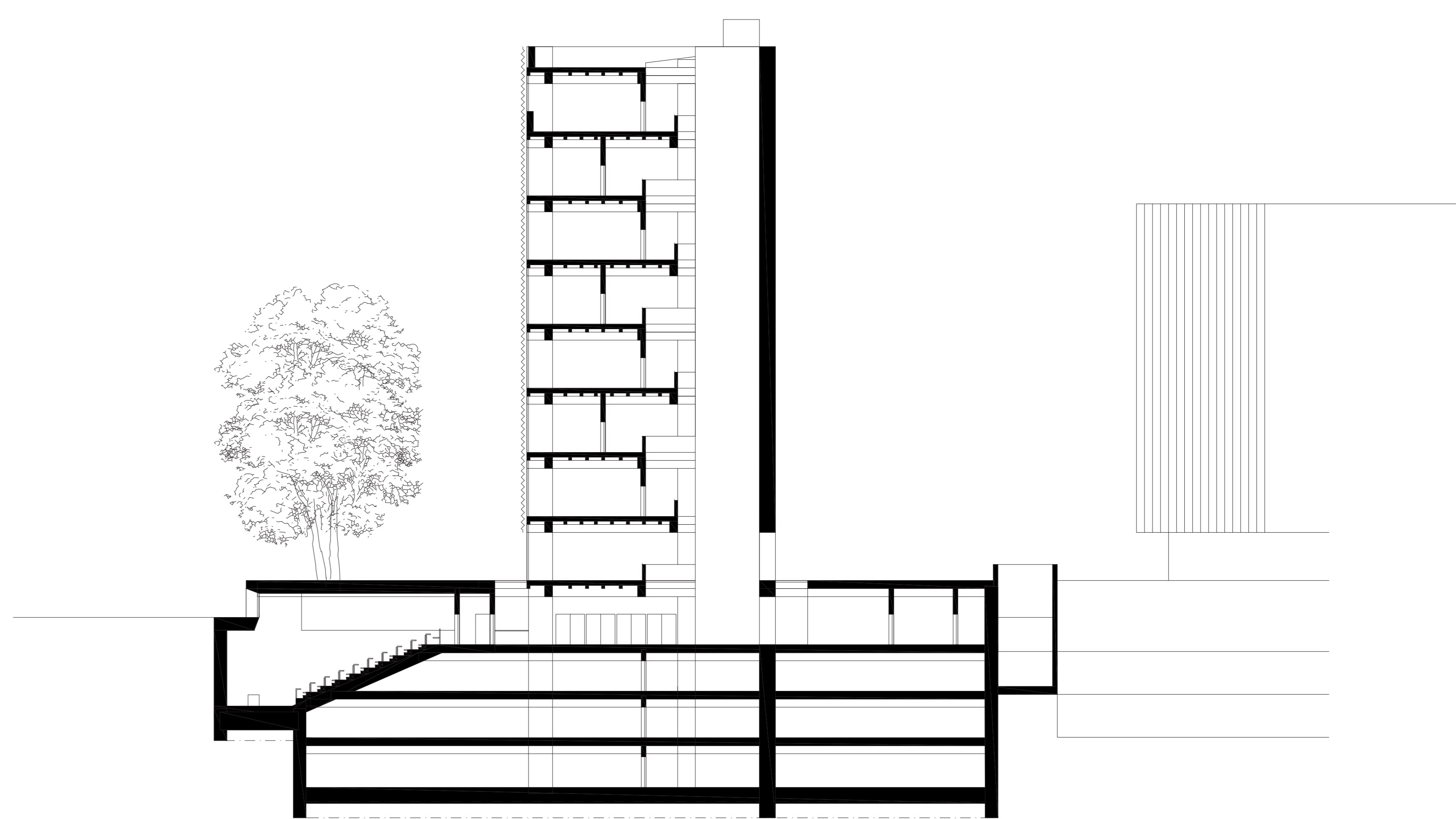
Perspektiva z Vaňkovi ulice



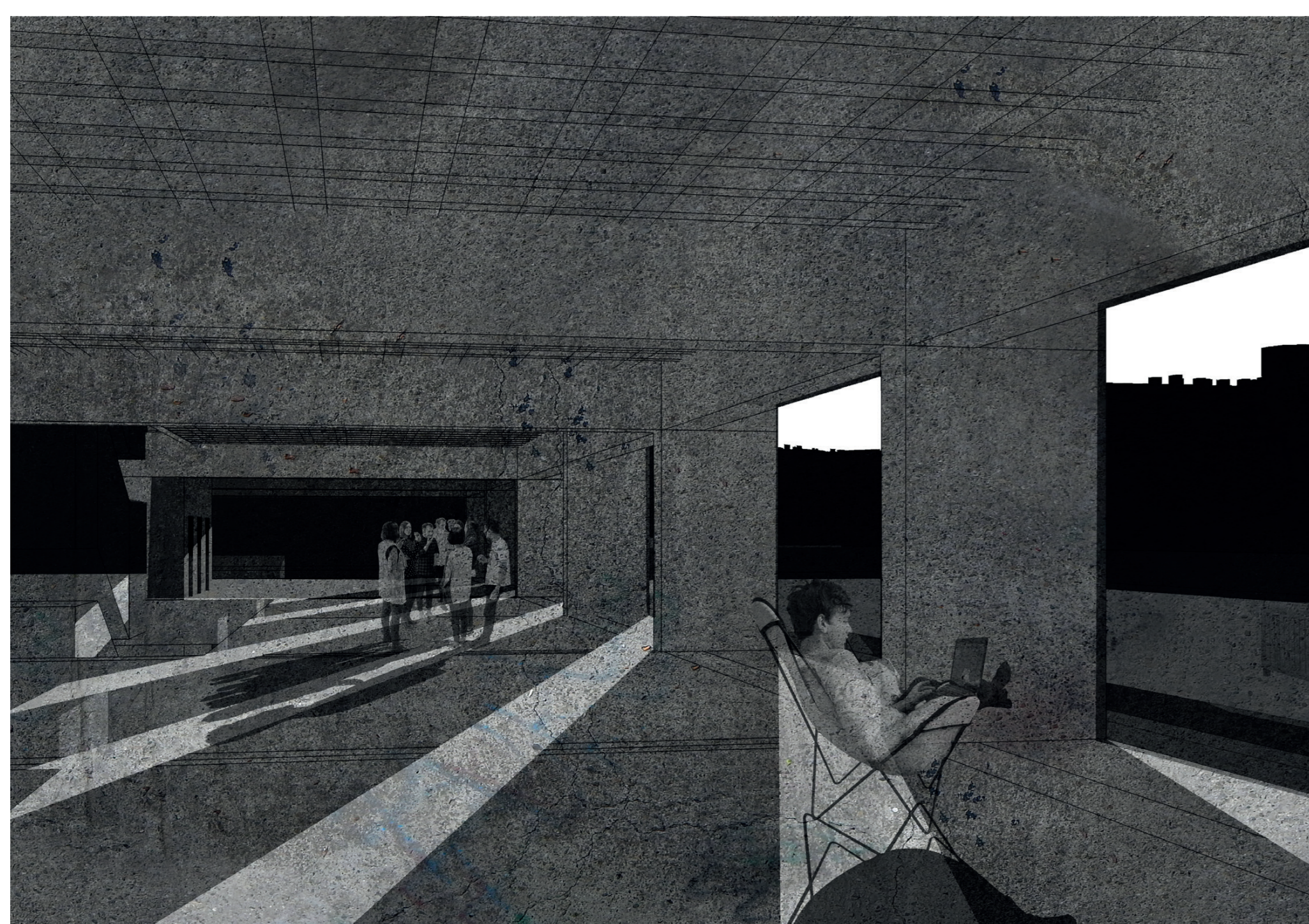
Stavba s plotem 1:500



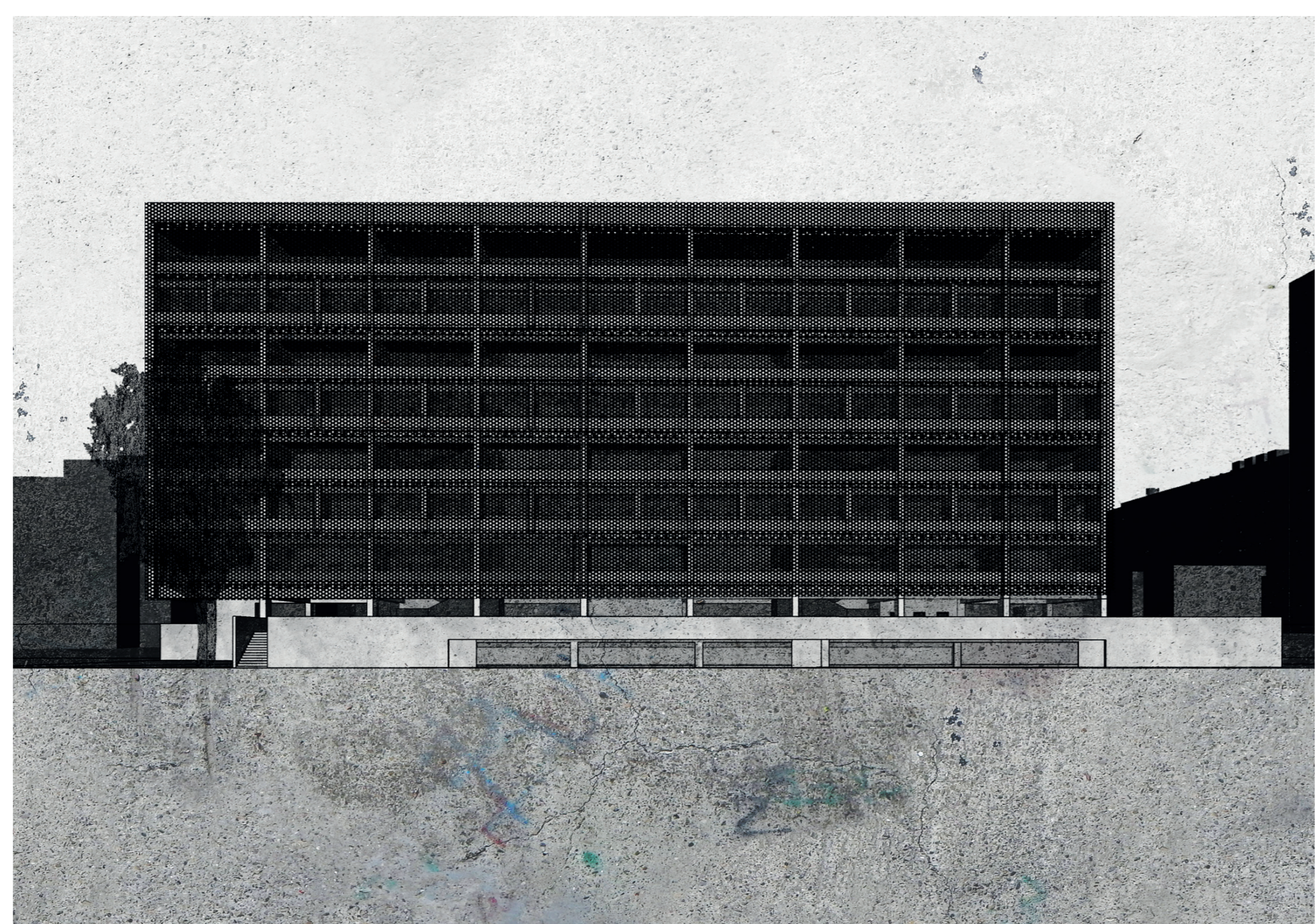
Axonometrie



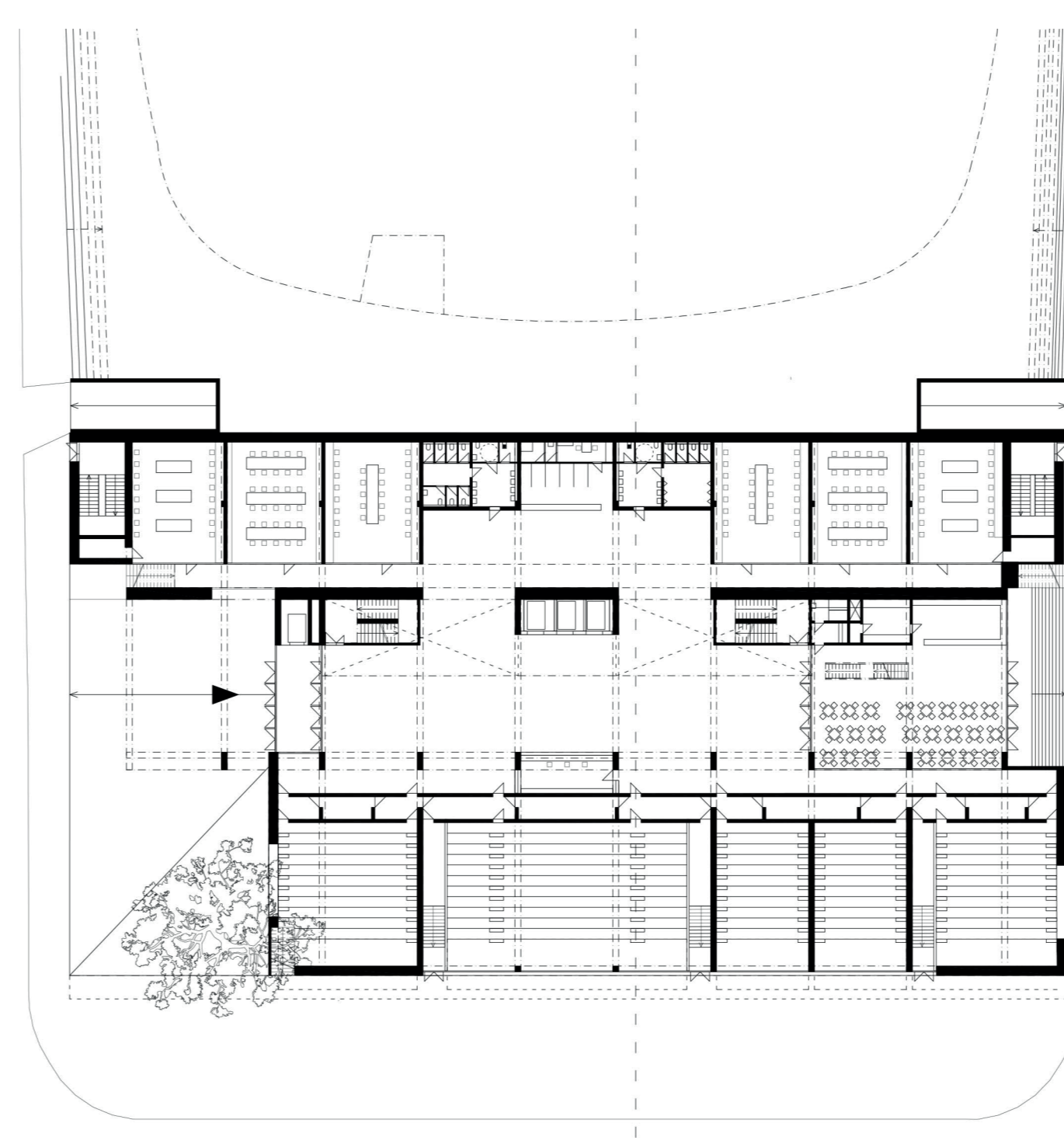
Průřez 1:200



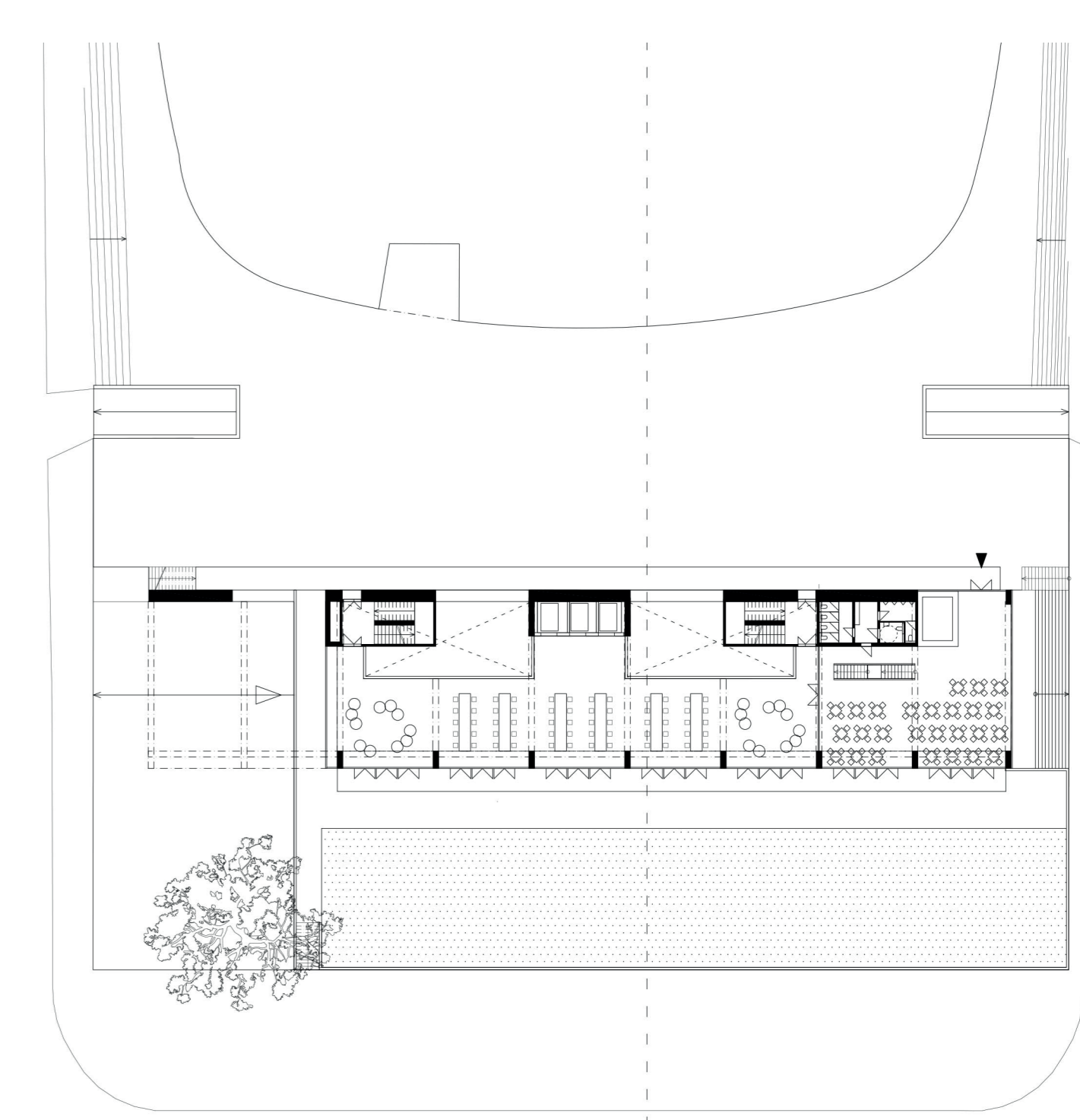
Perspektiva první podlaží s výstupem na platformu



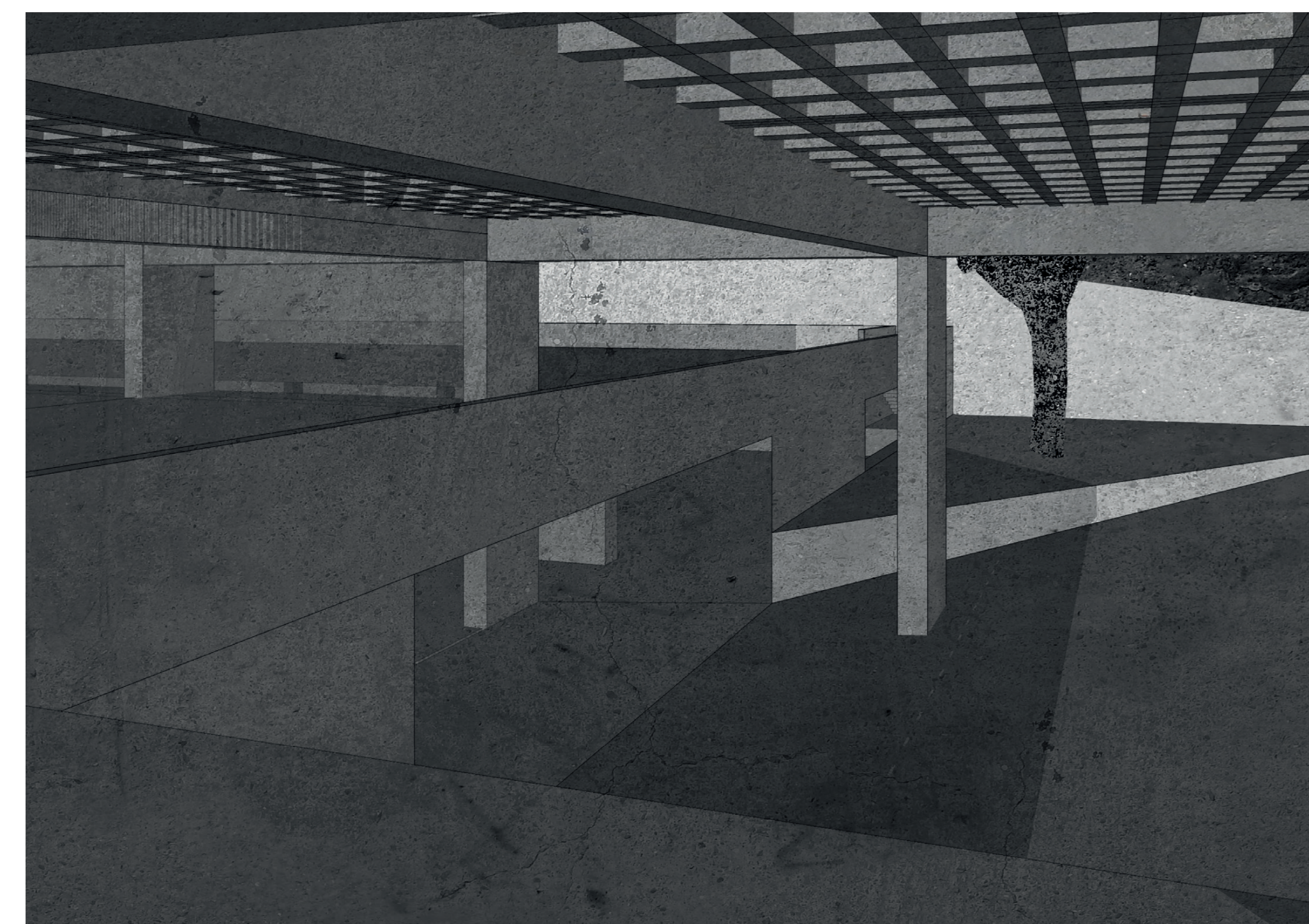
Perspektiva z Flemingova náměstí



Vstupní podlaží - platforma 1:500



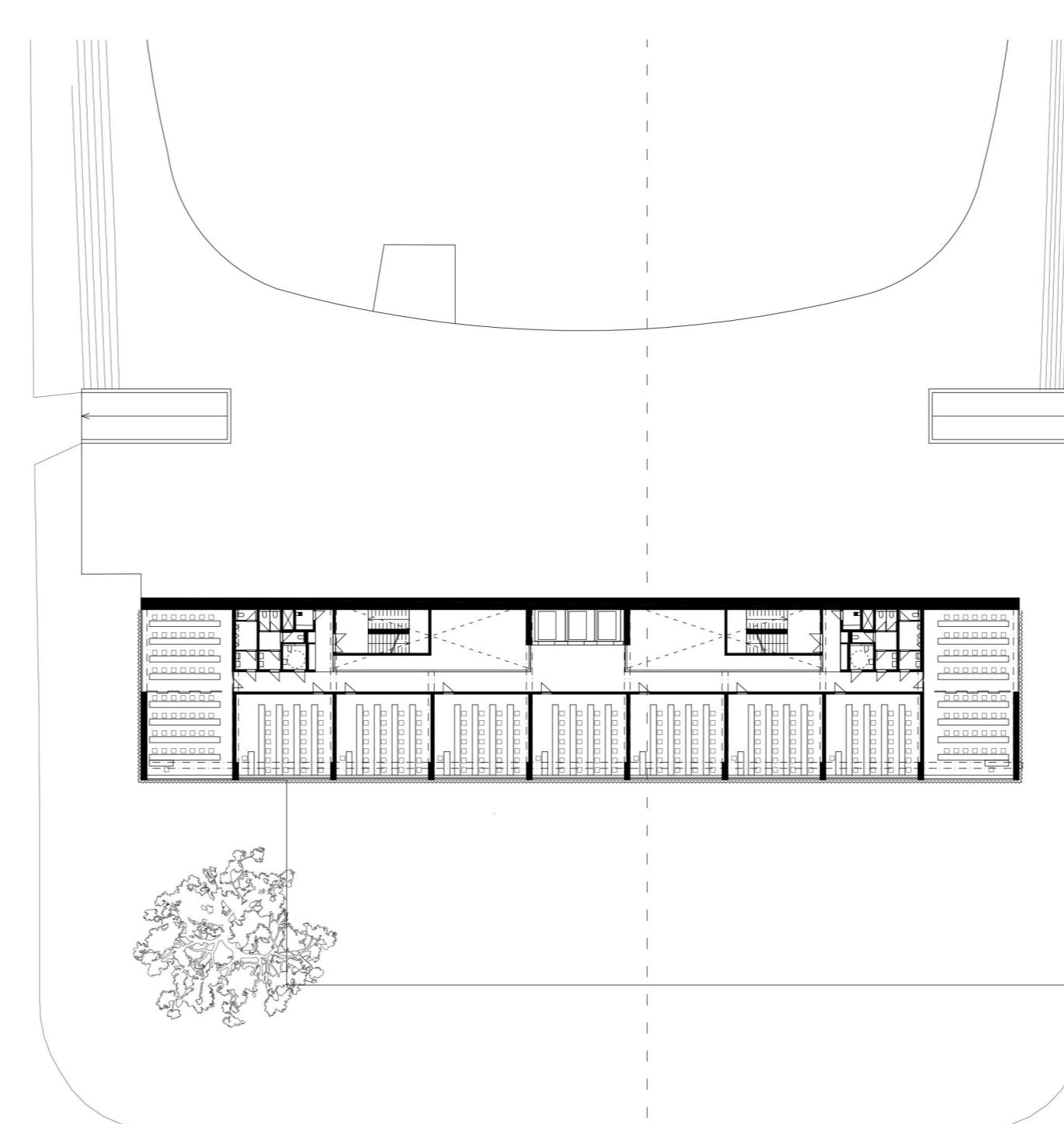
První nadzemní podlaží - na platformě 1:500



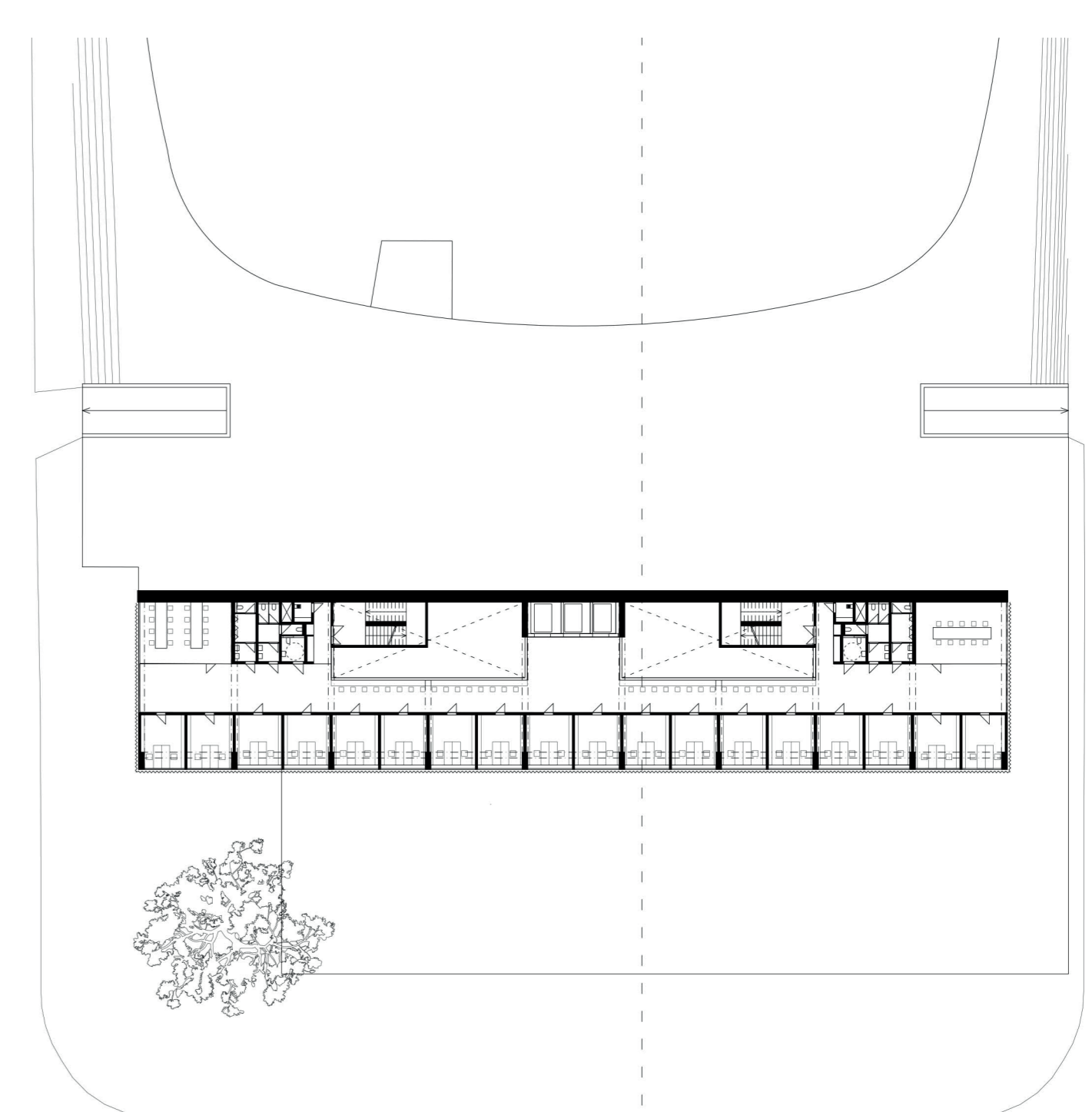
Perspektiva pohled z platformy na hlavní vstup



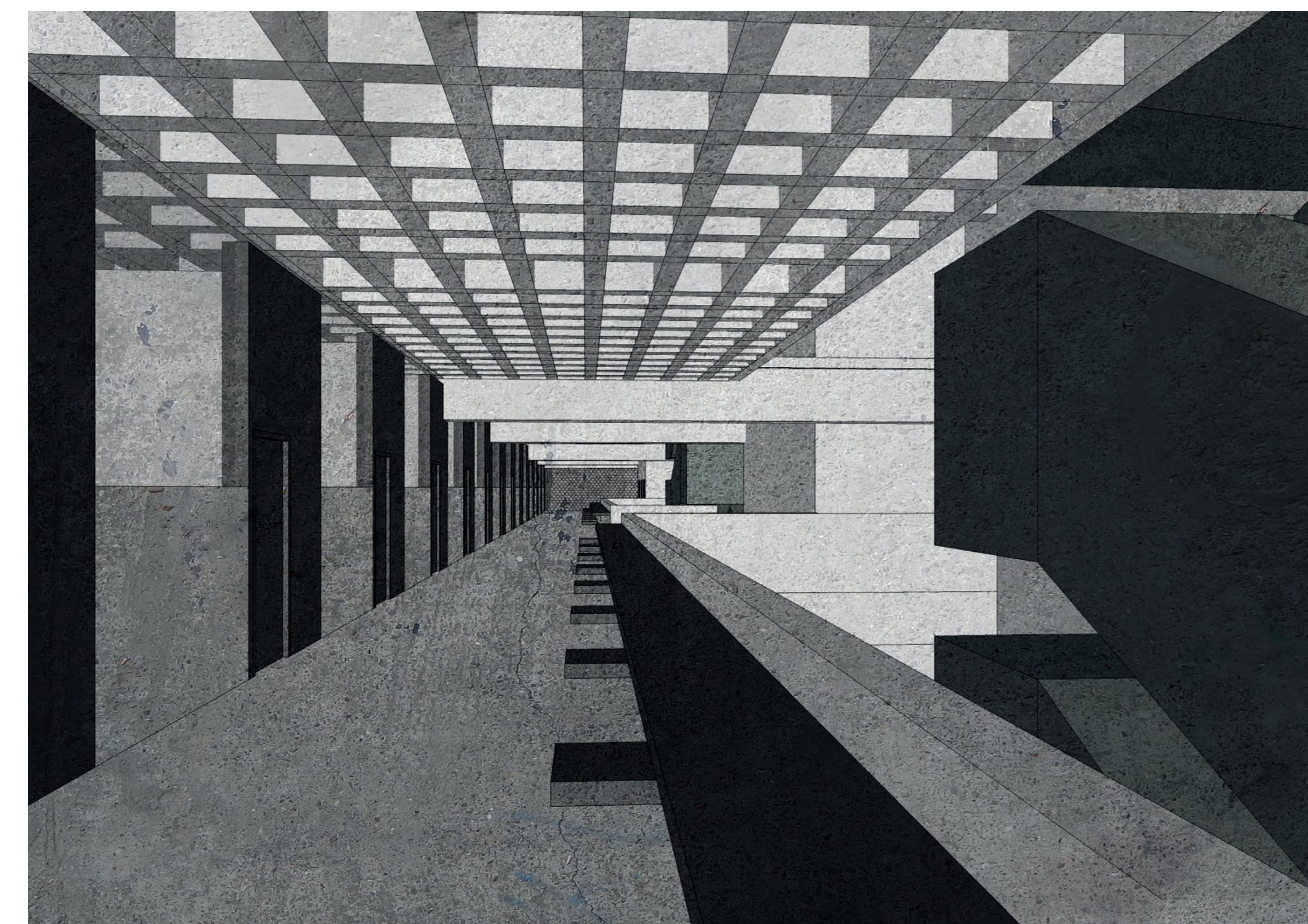
Perspektiva příjezdů k NIK



Typické podlaží kanceláří 1:500



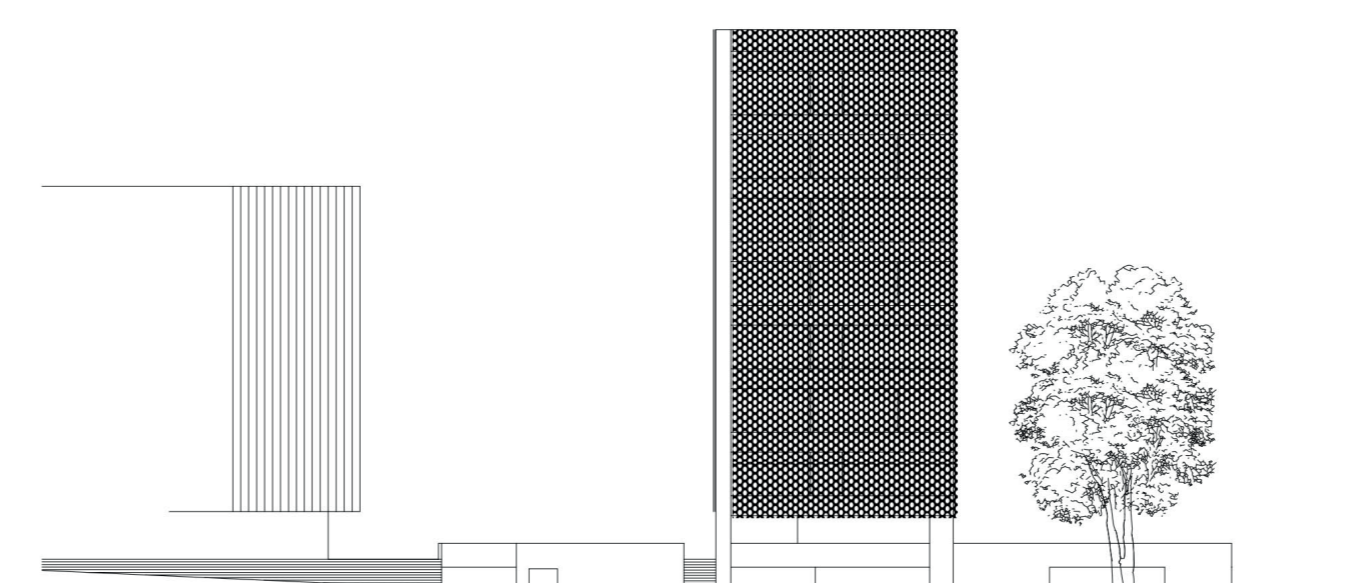
Typické podlaží kanceláří 1:500



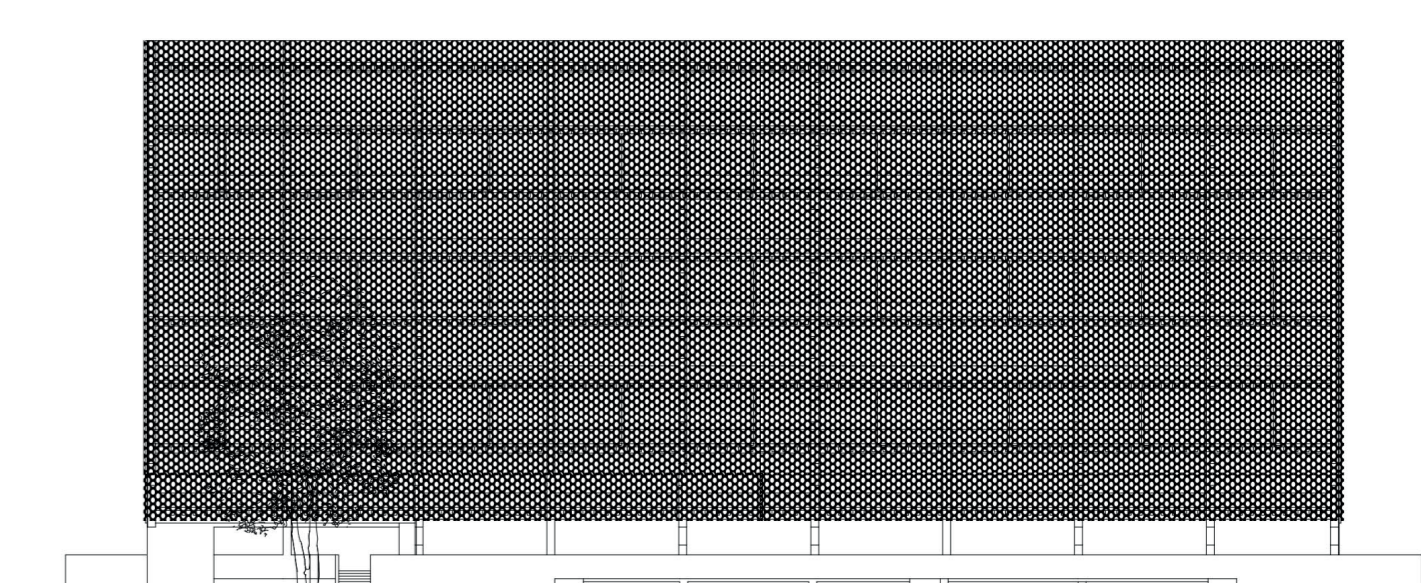
Perspektiva typického kancelářského podlaží



Perspektiva z ulice Bechyňova



Pohled ZV 1:500



Pohled SV 1:500