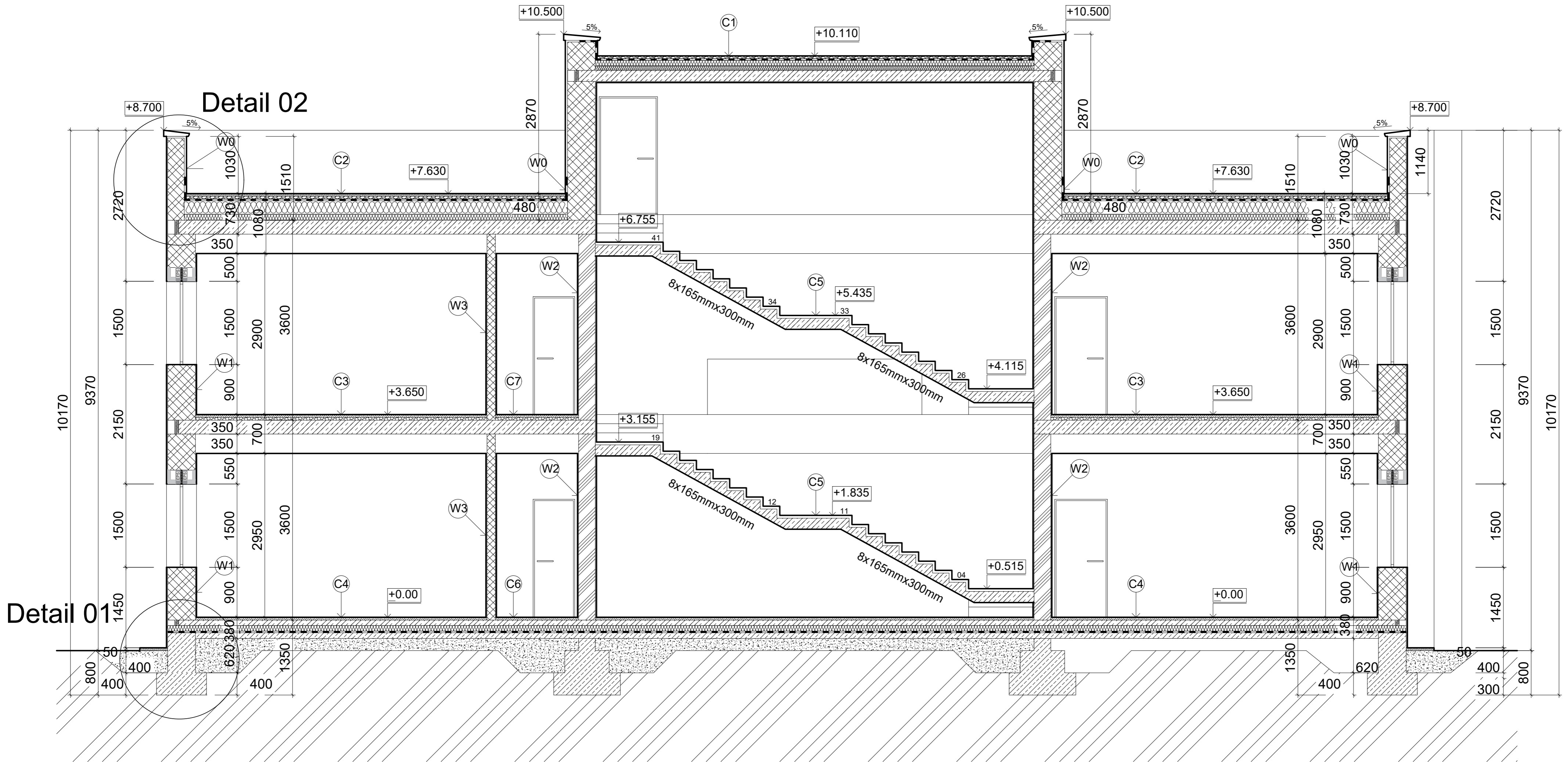


Cross Section A-A'



- W0: Ytong Plaster External 10 mm
2x Waterproofing till 300 mm Height
Ytong Statik 300 mm, P5
Ytong Plaster External 10 mm
- W1: Ytong Plaster Internal 5 mm
Ytong Lambda YQ 500 mm, P2.2
Ytong Plaster External 10 mm
- W2: Ytong Plaster Internal 5 mm
Ytong Statik 300 mm, P5
Ytong Plaster Internal 5 mm
- W3: Ytong Plaster Internal 5 mm
Ytong Klasik 150 mm, P2.8
Ytong Plaster Internal 5 mm

- C1: Gravel, 50 mm
2x Bitumen Waterproofing, 2x4 mm
Glue Layer
Thermal Insulation Slope, Minimum 30 mm
Thermal Insulation, 150 mm
Foil Vapor Barrier, 0.3 mm
Reinforced Concrete, 250 mm
Gypsum Board, 9 mm
- C2: Concrete Tiles, 500x500x60 mm
Plastic Pad
2x Bitumen Waterproofing, 2x4 mm
Glue Layer
Thermal Insulation Slope, Minimum 30 mm
Thermal Insulation, 150 mm
Foil Vapor Barrier, 0.3 mm
Reinforced Concrete, 250 mm
Gypsum Board, 9 mm

- C3: Marble, 10 mm
Mortar, 5 mm
Acoustic Insulation, 100 mm
Reinforced Concrete, 250 mm
Gypsum Board, 9 mm
- C4: Marble, 10 mm
Mortar, 5 mm
Reinforced Concrete, 100 mm
Foil Separation Membrane, 0.3 mm
mineral Wool Insulation, 100 mm
2x Bitumen Waterproofing, 2x4 mm
Leveling Concrete, 100 mm

- C5: Marble, 10 mm
Mortar, 5 mm
Acoustic Insulation, 50 mm
Reinforced Concrete, 200 mm
Ytong Plaster Internal, 5 mm
- C6: Ceramic Tiles, 5 mm
Mortar, 5 mm
Reinforced Concrete, 100 mm
Foil Separation Membrane, 0.3 mm
mineral Wool Insulation, 100 mm
2x Bitumen Waterproofing, 2x4 mm
Leveling Concrete, 100 mm
- C7: Ceramic Tiles, 5 mm
Mortar, 5 mm
Acoustic Insulation, 100 mm
Reinforced Concrete, 250 mm
Gypsum Board, 9 mm

Student: Ahmed Alshawi	Supervisor: Doc. Ing. Frantisek Kulhanek, CSc.	 Czech Technical University in Prague
Subject: Diploma Project	Academic Year: 2018/2019	
Title: Cross Section A-A'		Scale: 1:50
		No. of Drawing: 05