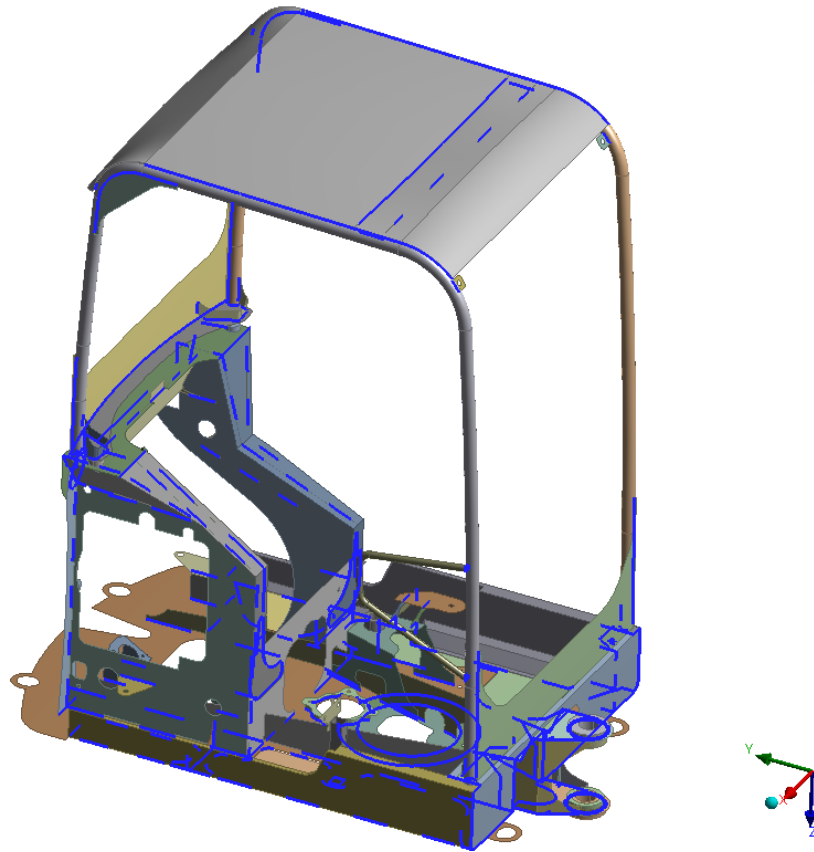
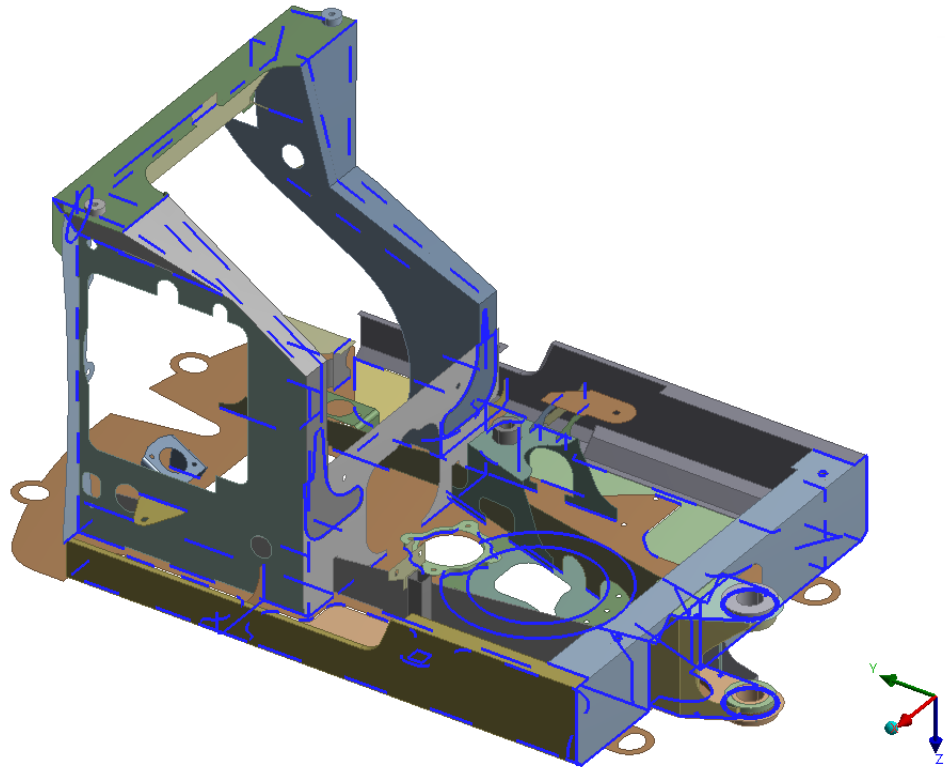


## Příloha 2 – MKP

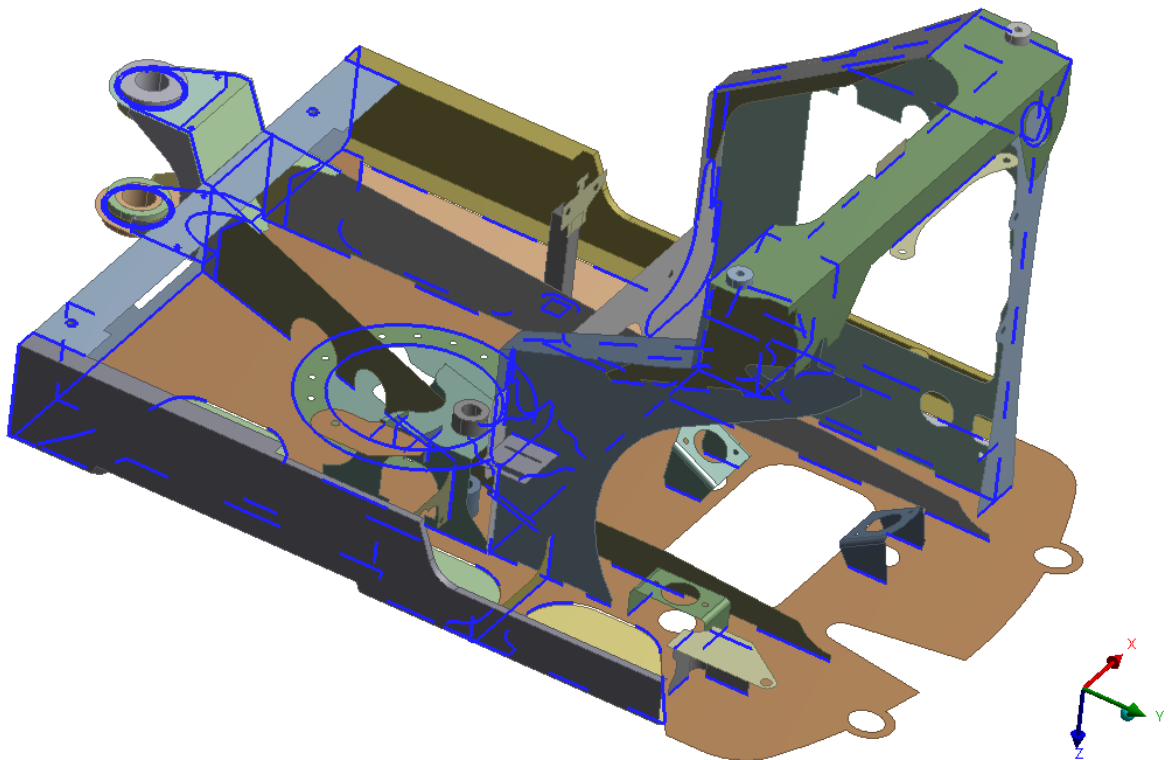
E15\_1



Obr. 1 E15\_1 – svary (vše)



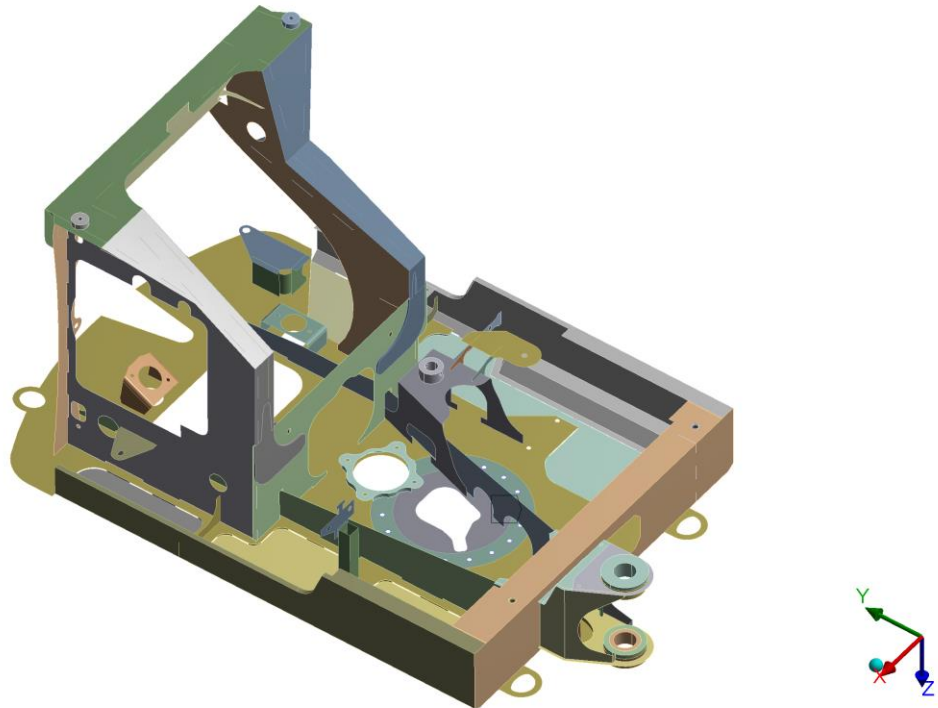
Obr. 2 E15\_1 – svary (nosný rám 1)



Obr. 3 E15\_1 – svary (nosný rám 2)


**B: Modal**  
Modal e15\_1  
Frequency: N/A  
15.05.2018 6:21

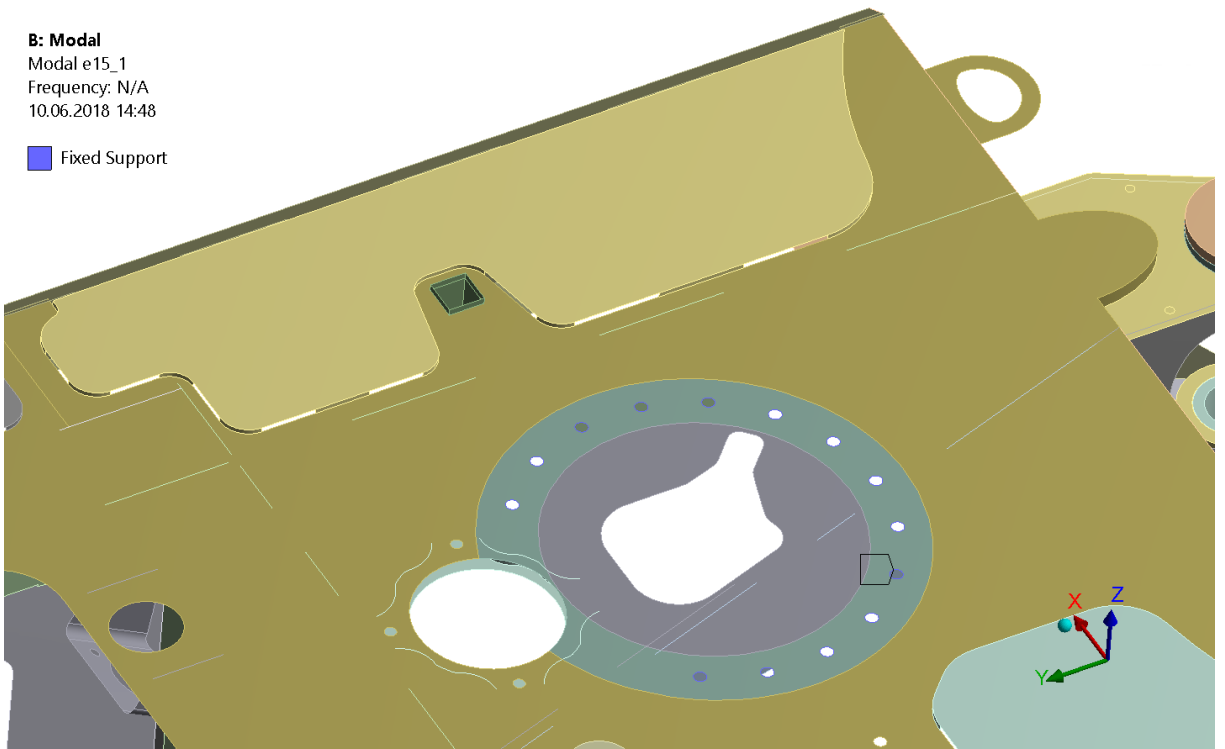
 Fixed Support



Obr. 4 E15\_1 – pevné uložení

**B: Modal**  
Modal e15\_1  
Frequency: N/A  
10.06.2018 14:48

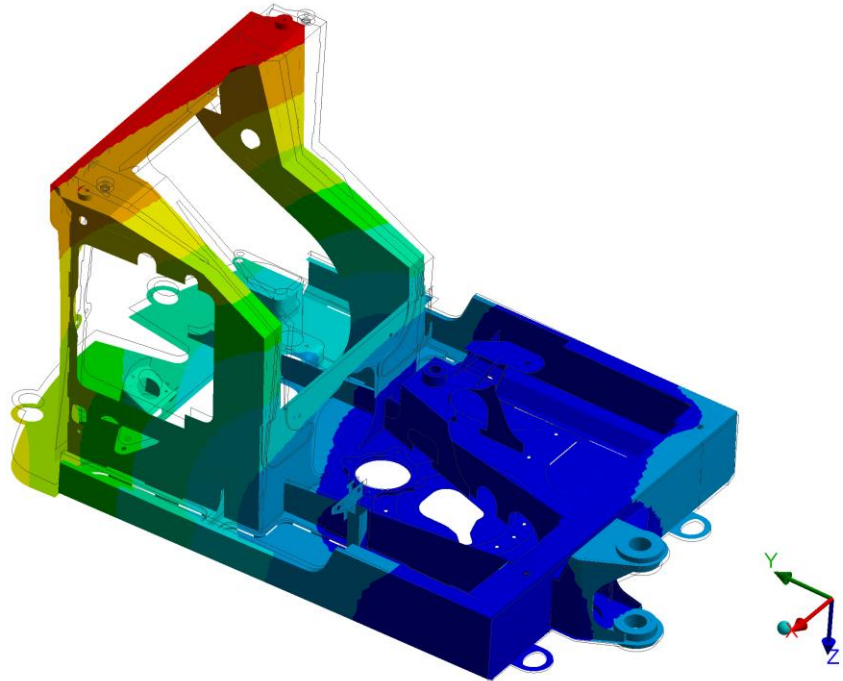
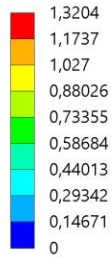
 Fixed Support



Obr. 5 E15\_1 – pevné uložení - detail

**B: Modal**

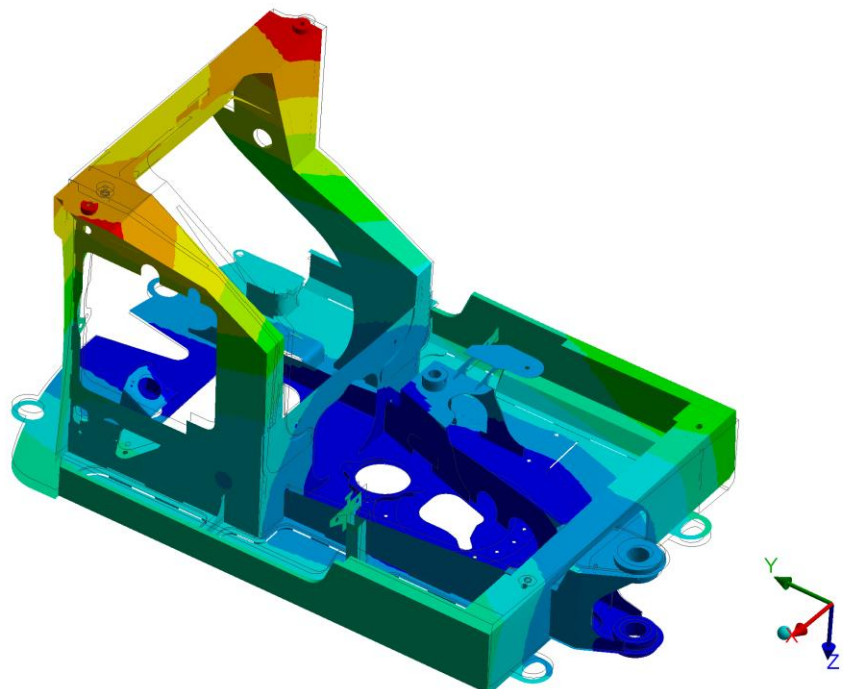
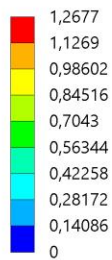
Total Deformation  
Type: Total Deformation  
Frequency: 9,2212 Hz  
Unit: mm  
Custom Obsolete  
Max: 5,4583  
Min: 0  
15.05.2018 6:37



Obr. 6 E15\_1 – vlastní tvar struktury 1

**B: Modal**

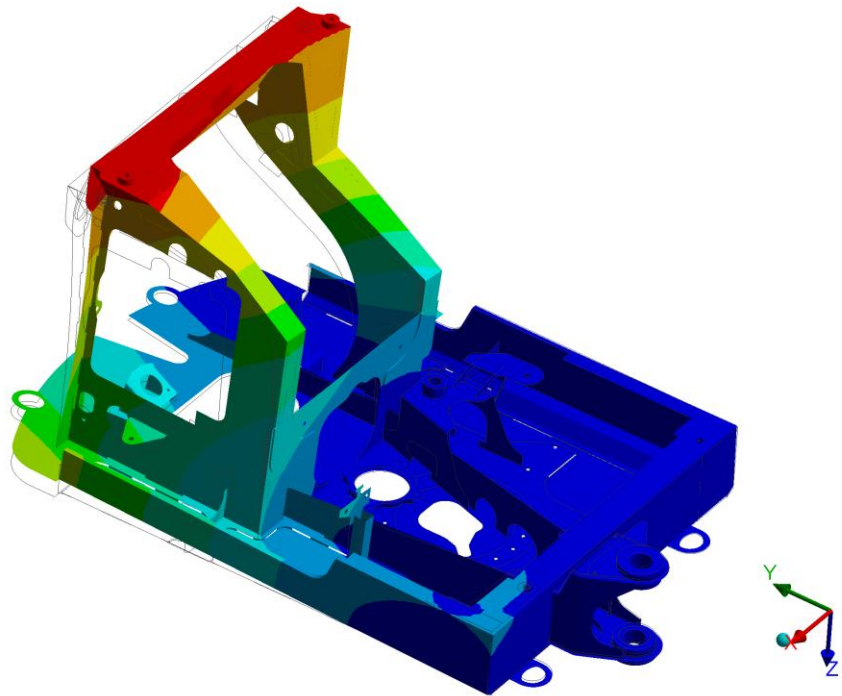
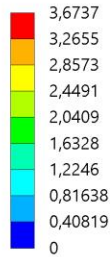
Total Deformation 2  
Type: Total Deformation  
Frequency: 11,208 Hz  
Unit: mm  
Custom Obsolete  
Max: 7,1372  
Min: 0  
15.05.2018 6:37



Obr. 7 E15\_1 – vlastní tvar struktury 2

**B: Modal**

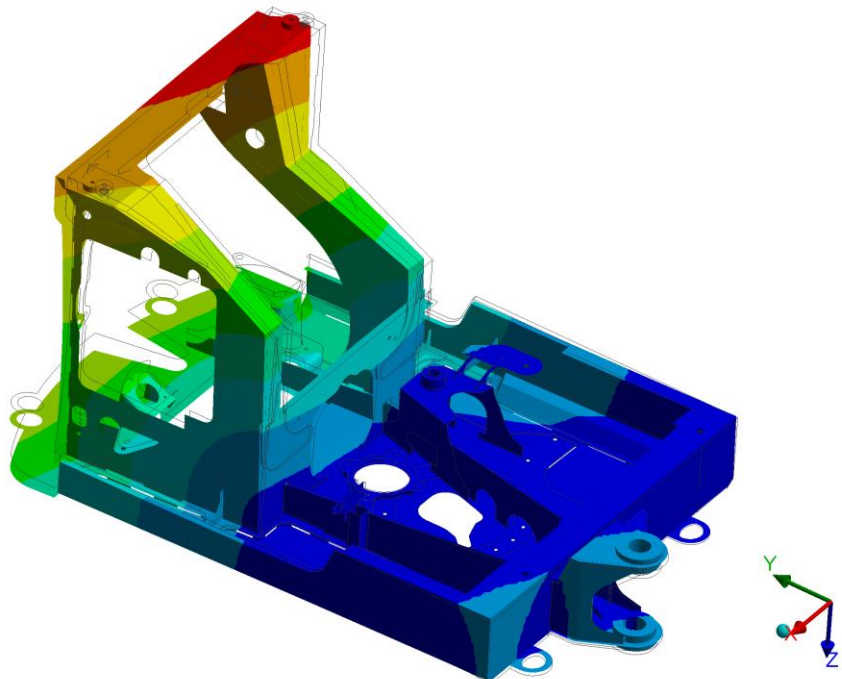
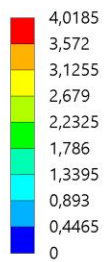
Total Deformation 3  
Type: Total Deformation  
Frequency: 20,238 Hz  
Unit: mm  
Custom Obsolete  
Max: 6,0583  
Min: 0  
15.05.2018 6:37



Obr. 8 E15\_1 – vlastní tvar struktury 3

**B: Modal**

Total Deformation 4  
Type: Total Deformation  
Frequency: 25,688 Hz  
Unit: mm  
Custom Obsolete  
Max: 8,7987  
Min: 0  
15.05.2018 6:38

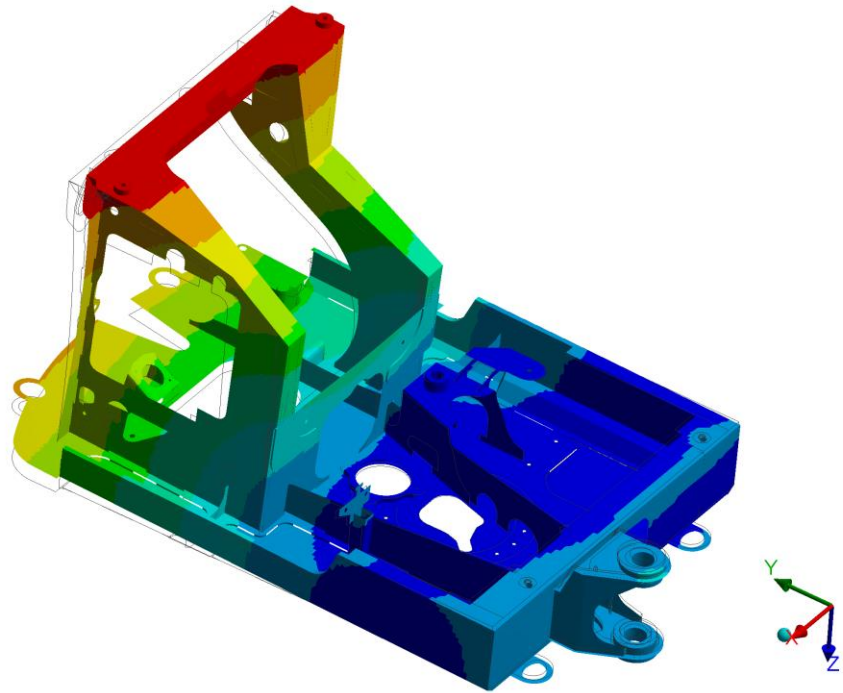
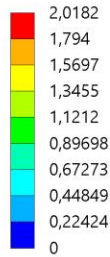


Obr. 9 E15\_1 – vlastní tvar struktury 4



**B: Modal**

Total Deformation 5  
 Type: Total Deformation  
 Frequency: 30,493 Hz  
 Unit: mm  
 Custom Obsolete  
 Max: 19,613  
 Min: 0  
 15.05.2018 6:38

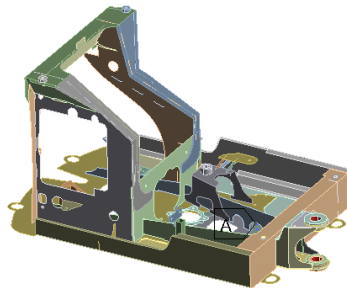


Obr. 10 E15\_1 – vlastní tvar struktury 5

**E: Static Structural**

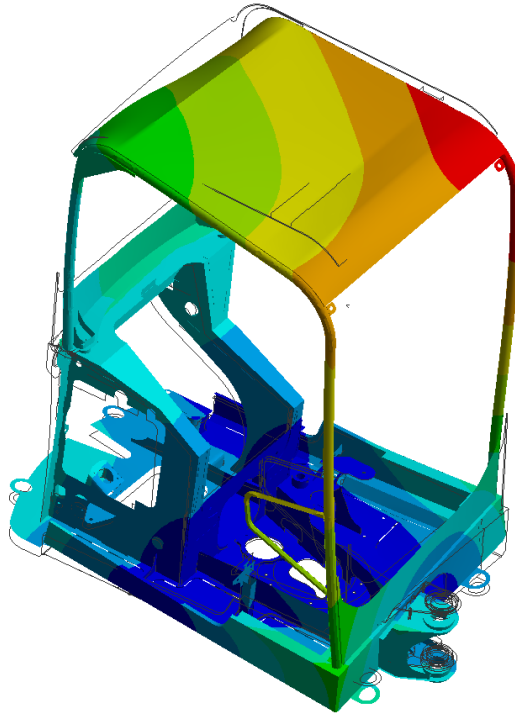
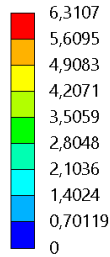
Zatizeni\_silou\_na\_lzici\_e15\_1  
 Time: 1, s  
 10.06.2018 15:32

- A** Fixed Support
- B** Remote Force: 13270 N
- C** Remote Force 2: 16990 N



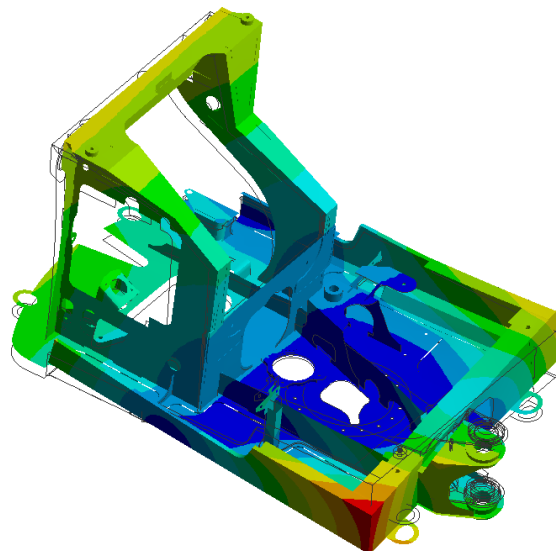
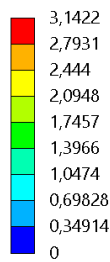
Obr. 11 E15\_1 – okrajové podmínky – zatížení silou na lžici

**E: Static Structural**  
Total Deformation  
Type: Total Deformation  
Unit: mm  
Time: 1  
Custom  
Max: 6,3107  
Min: 0  
10.06.2018 15:34



Obr. 12 E15\_1 – deformace (vše) – zatížení silou na lžici

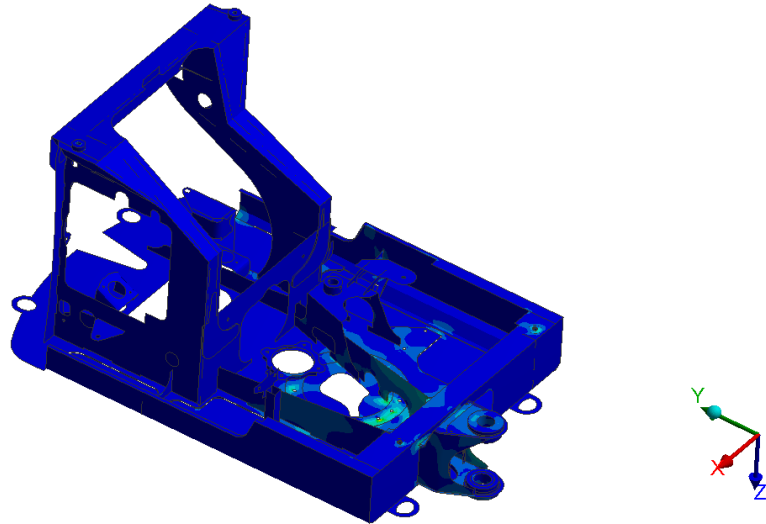
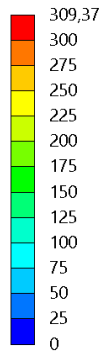
**E: Static Structural**  
Total Deformation  
Type: Total Deformation  
Unit: mm  
Time: 1  
Custom  
Max: 6,3107  
Min: 0  
10.06.2018 15:35



Obr. 13 E15\_1 – deformace (struktura) – zatížení silou na lžici (pohled 1)

**E: Static Structural**

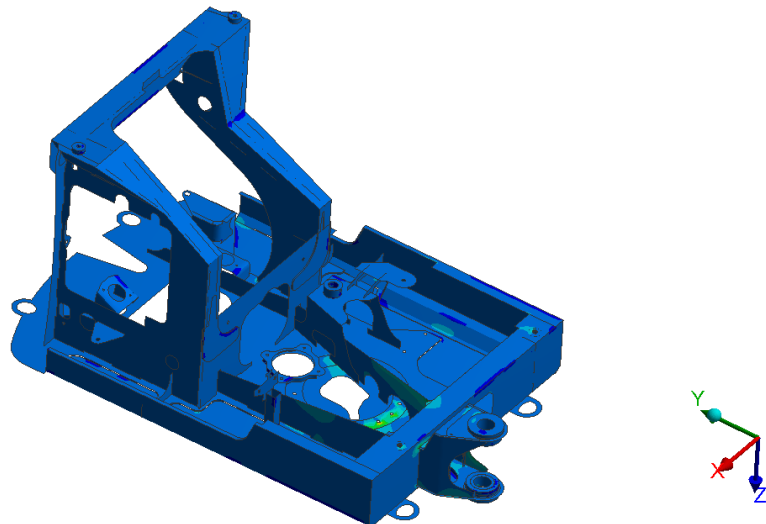
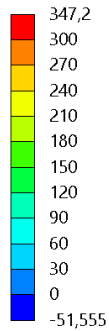
Equivalent Stress  
Type: Equivalent (von-Mises) Stress - Top/Bottom  
Unit: MPa  
Time: 1  
Custom Obsolete  
Max: 309,37  
Min: 1,7066e-10  
10.06.2018 15:41



Obr. 14 E15\_1 – ekvivalentní napětí – zatížení silou na lžici (pohled 1)

**E: Static Structural**

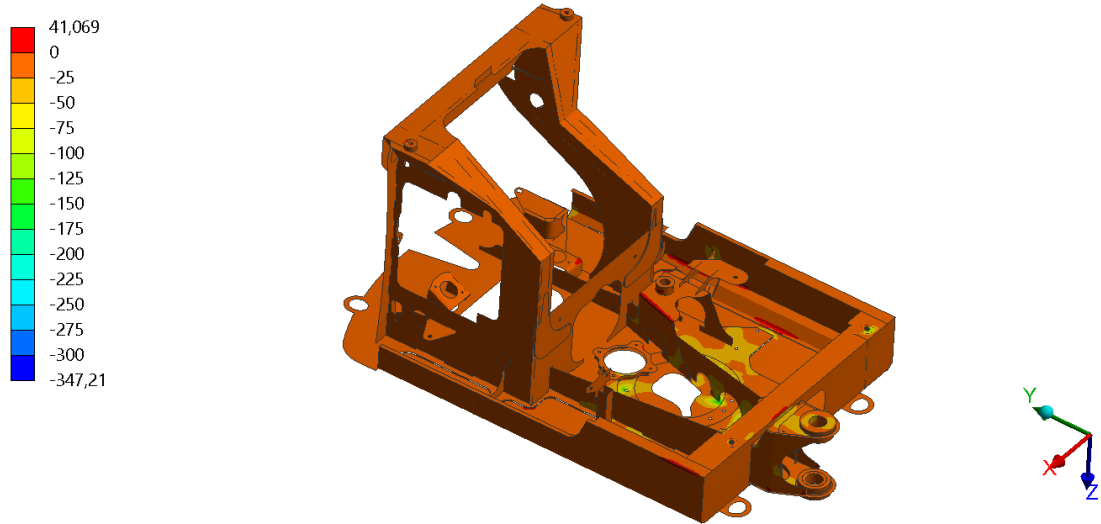
Maximum Principal Stress  
Type: Maximum Principal Stress - Top/Bottom  
Unit: MPa  
Time: 1  
Max: 347,2  
Min: -51,555  
10.06.2018 15:41



Obr. 15 E15\_1 – maximální napětí – zatížení silou na lžici (pohled 1)

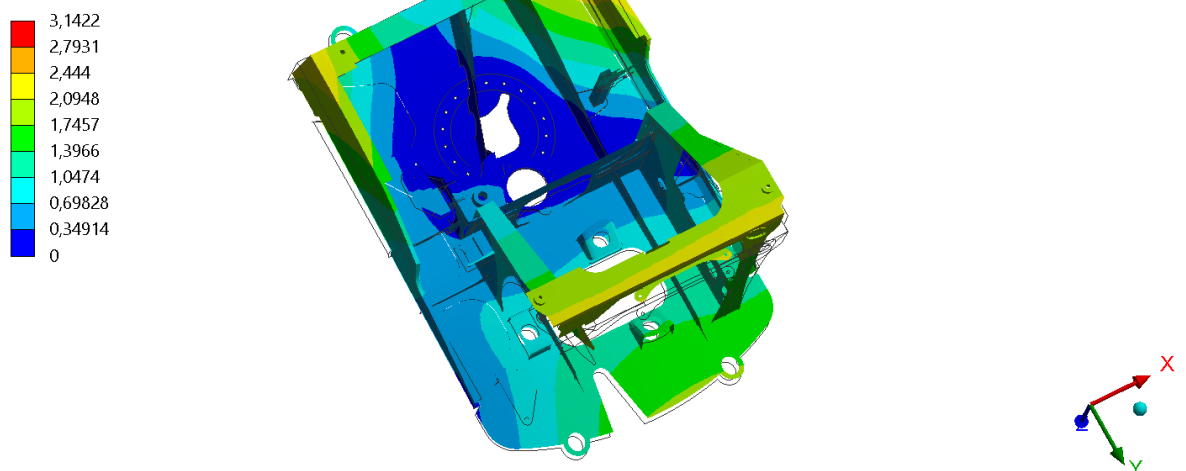


**E: Static Structural**  
Minimum Principal Stress  
Type: Minimum Principal Stress - Top/Bottom  
Unit: MPa  
Time: 1  
Max: 41,069  
Min: -347,21  
10.06.2018 15:41



Obr. 16 E15\_1 – minimální napětí – zatížení silou na lžici (pohled 1)

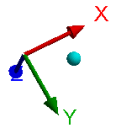
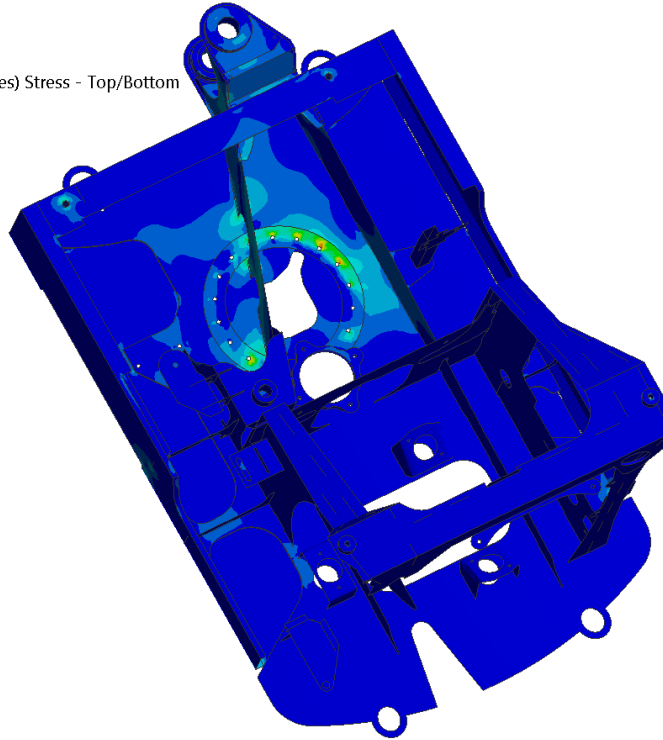
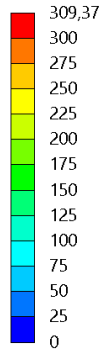
**E: Static Structural**  
Total Deformation  
Type: Total Deformation  
Unit: mm  
Time: 1  
Custom  
Max: 6,3107  
Min: 0  
10.06.2018 15:35



Obr. 17 E15\_1 – deformace (struktura) – zatížení silou na lžici (pohled 2)

**E: Static Structural**

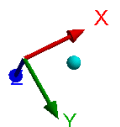
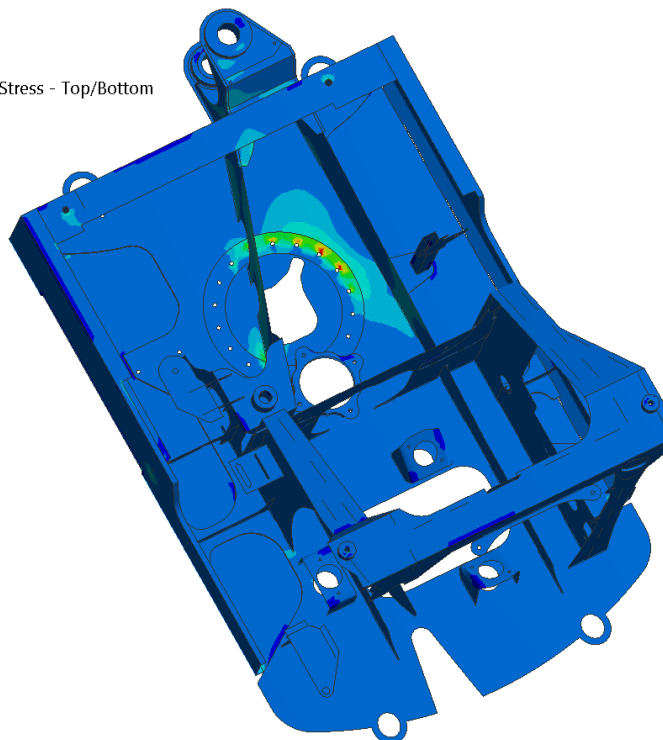
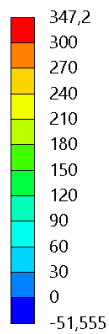
Equivalent Stress  
Type: Equivalent (von-Mises) Stress - Top/Bottom  
Unit: MPa  
Time: 1  
Custom Obsolete  
Max: 309,37  
Min: 1,7066e-10  
10.06.2018 15:38



Obr. 18 E15\_1 – ekvivalentní napětí – zatížení silou na lžici (pohled 2)

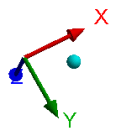
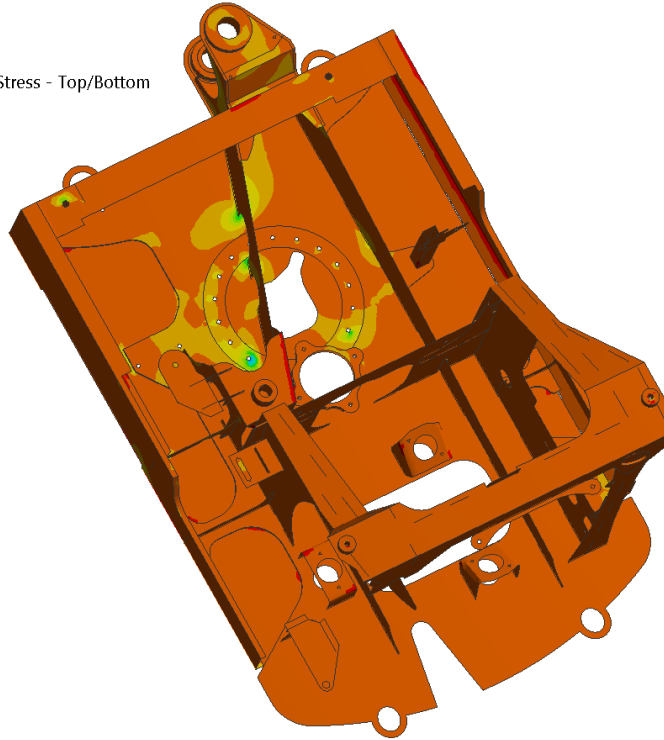
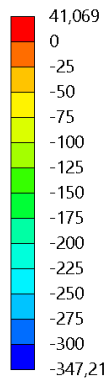
**E: Static Structural**

Maximum Principal Stress  
Type: Maximum Principal Stress - Top/Bottom  
Unit: MPa  
Time: 1  
Max: 347,2  
Min: -51,555  
10.06.2018 15:38



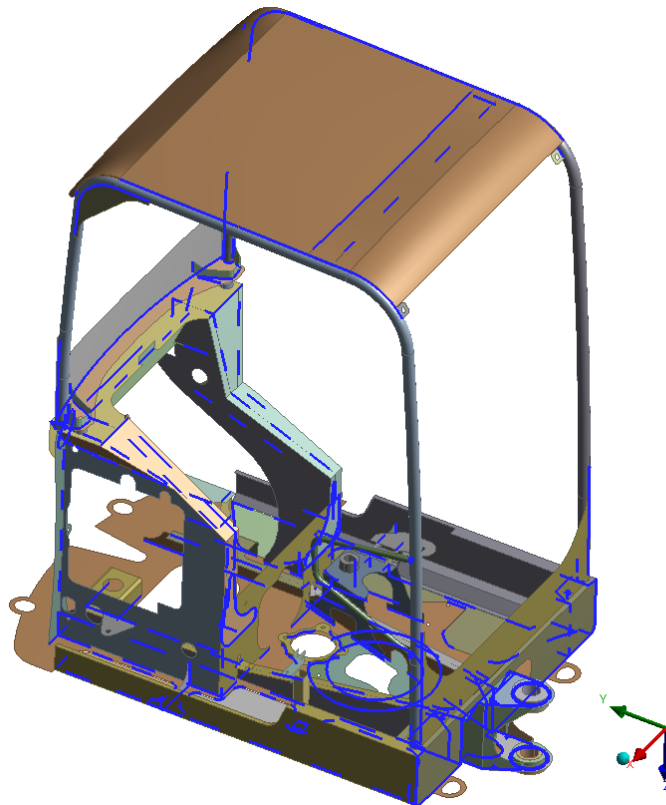
Obr. 19 E15\_1 – maximální napětí – zatížení silou na lžici (pohled 2)

**E: Static Structural**  
 Minimum Principal Stress  
 Type: Minimum Principal Stress - Top/Bottom  
 Unit: MPa  
 Time: 1  
 Max: 41,069  
 Min: -347,21  
 10.06.2018 15:38

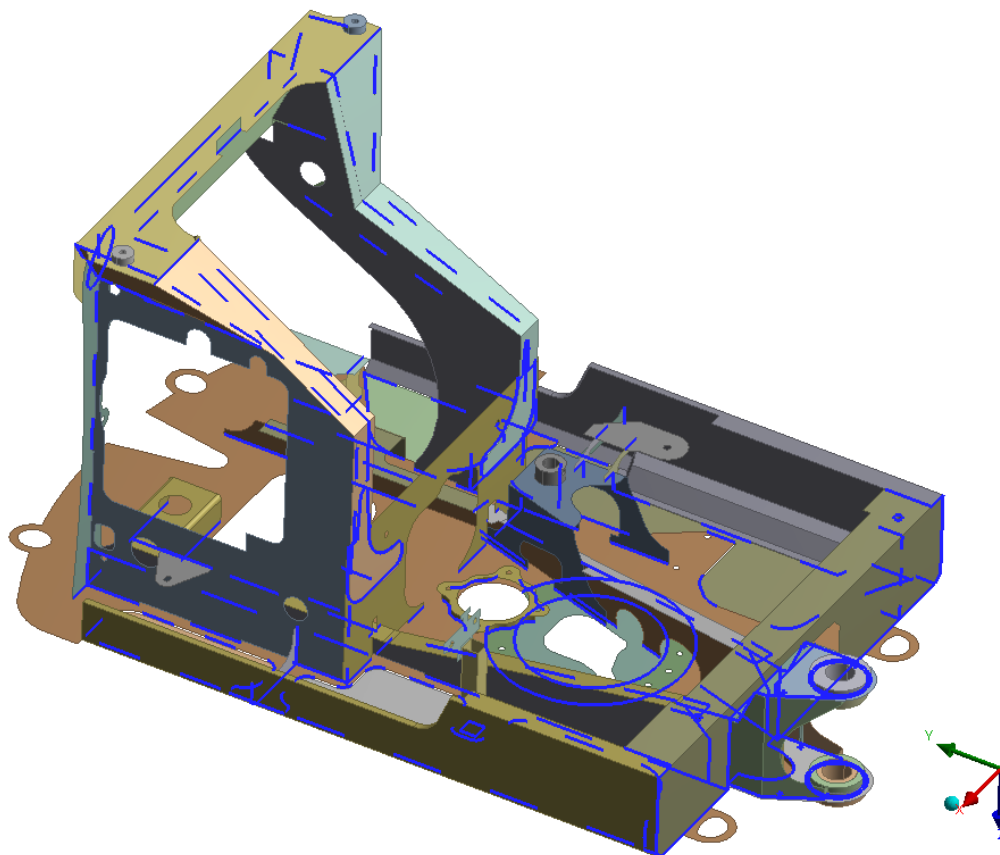


Obr. 20 E15\_1 – minimální napětí – zatížení silou na lžici (pohled 2)

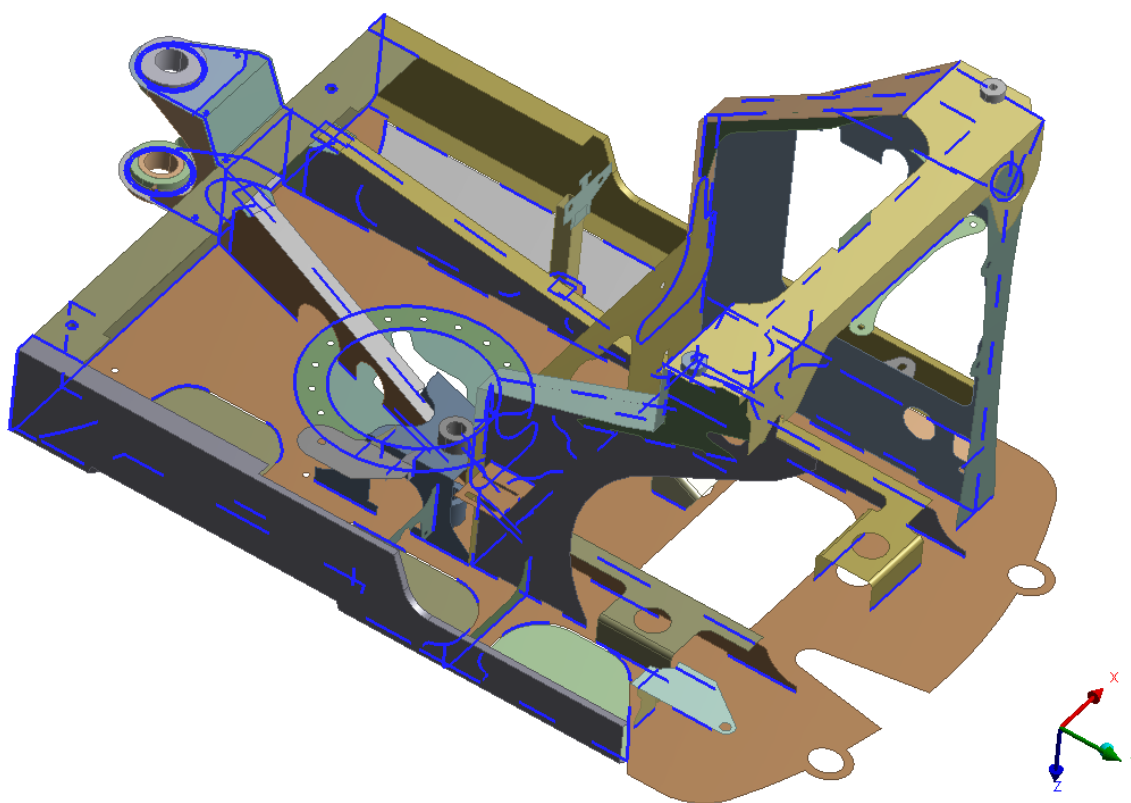
### E15\_2



Obr. 21 E15\_2 – svary (vše)



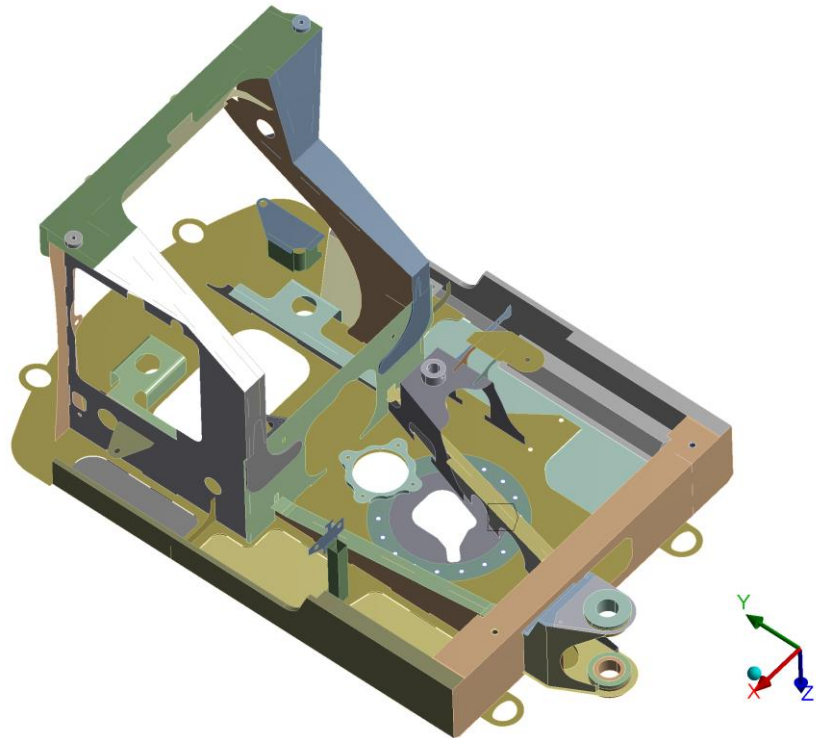
Obr. 22 E15\_2 – svary (horní struktura stroje 1)



Obr. 23 E15\_2 – svary (horní struktura stroje 2)


**B: Modal**  
Fixed Support  
Frequency: N/A  
23.06.2018 13:03

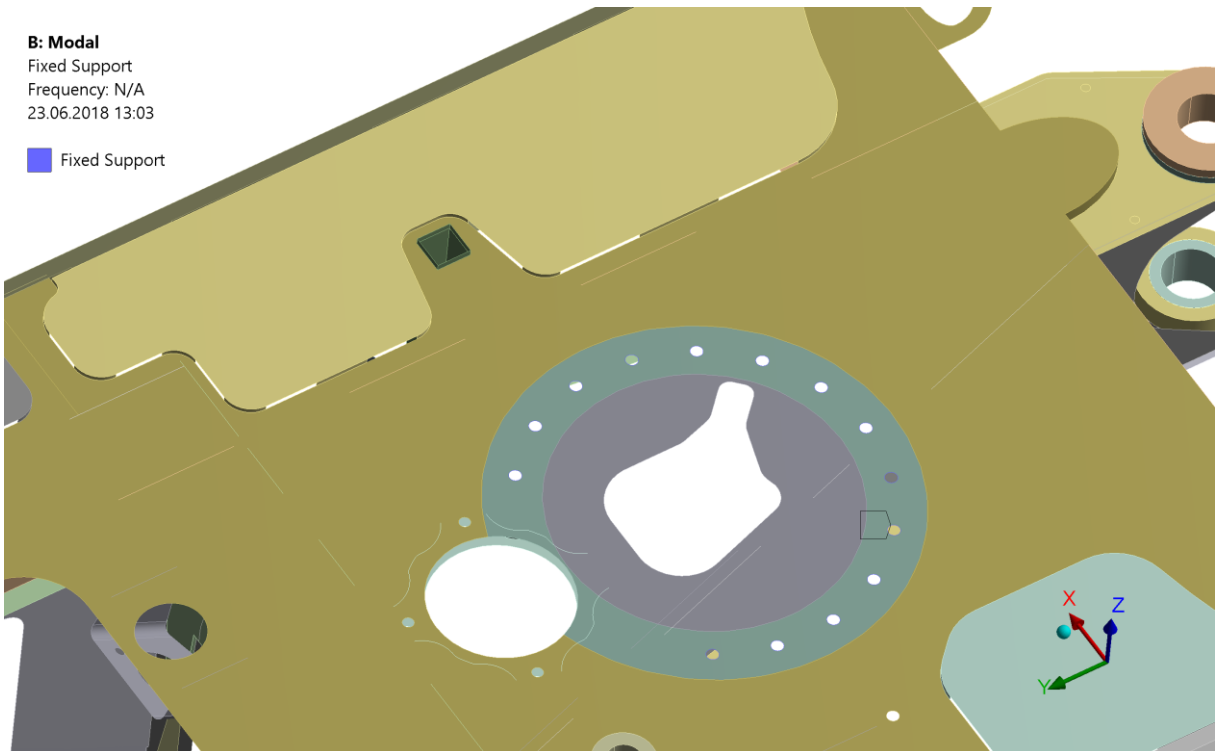
 Fixed Support



Obr. 24 E15\_2 – pevné uložení

**B: Modal**  
Fixed Support  
Frequency: N/A  
23.06.2018 13:03

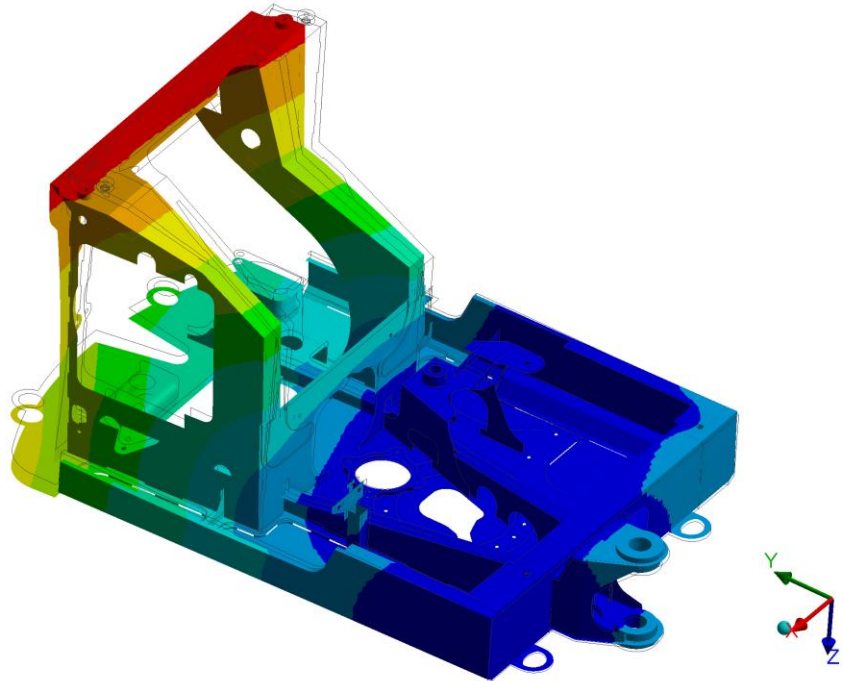
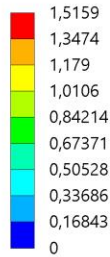
 Fixed Support



Obr. 25 E15\_2 – pevné uložení - detail

**B: Modal**

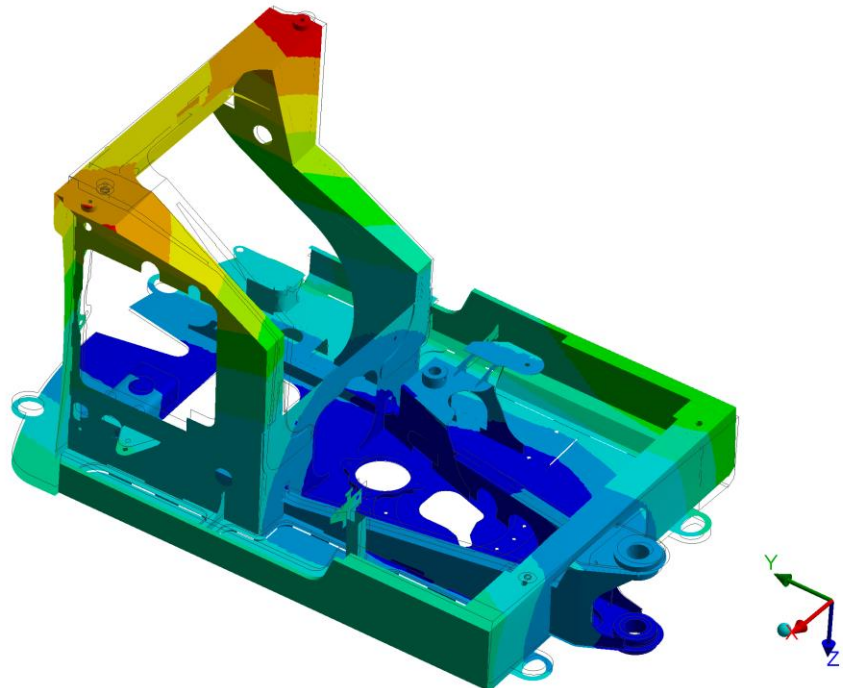
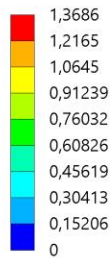
Total Deformation  
 Type: Total Deformation  
 Frequency: 8,8345 Hz  
 Unit: mm  
 Custom  
 Max: 5,4077  
 Min: 0  
 15.05.2018 6:42



Obr. 26 E15\_2 – vlastní tvar struktury 1

**B: Modal**

Total Deformation 2  
 Type: Total Deformation  
 Frequency: 10,924 Hz  
 Unit: mm  
 Custom  
 Max: 7,0243  
 Min: 0  
 15.05.2018 6:42

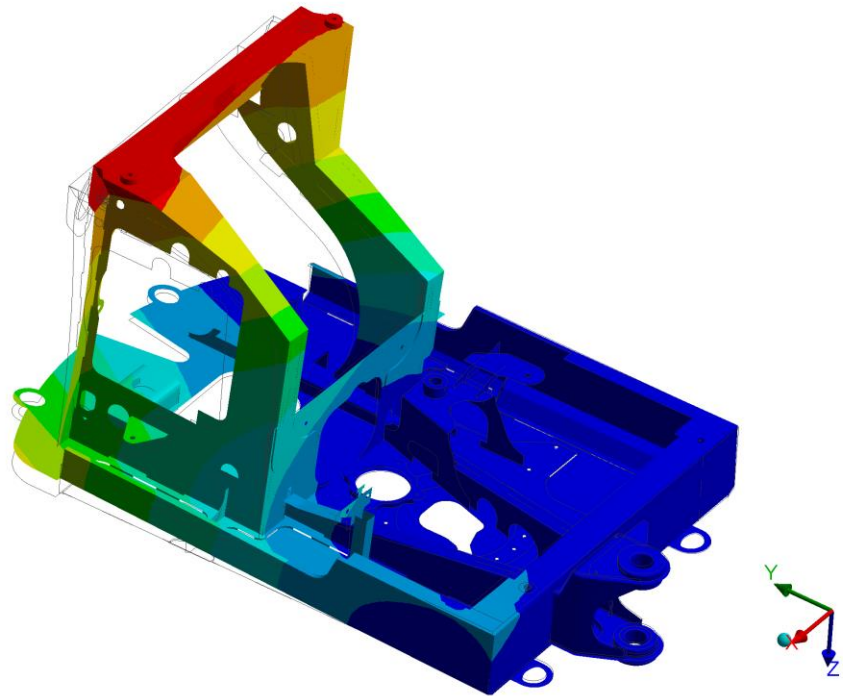
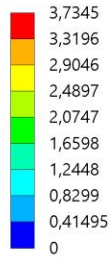


Obr. 27 E15\_2 – vlastní tvar struktury 2



**B: Modal**

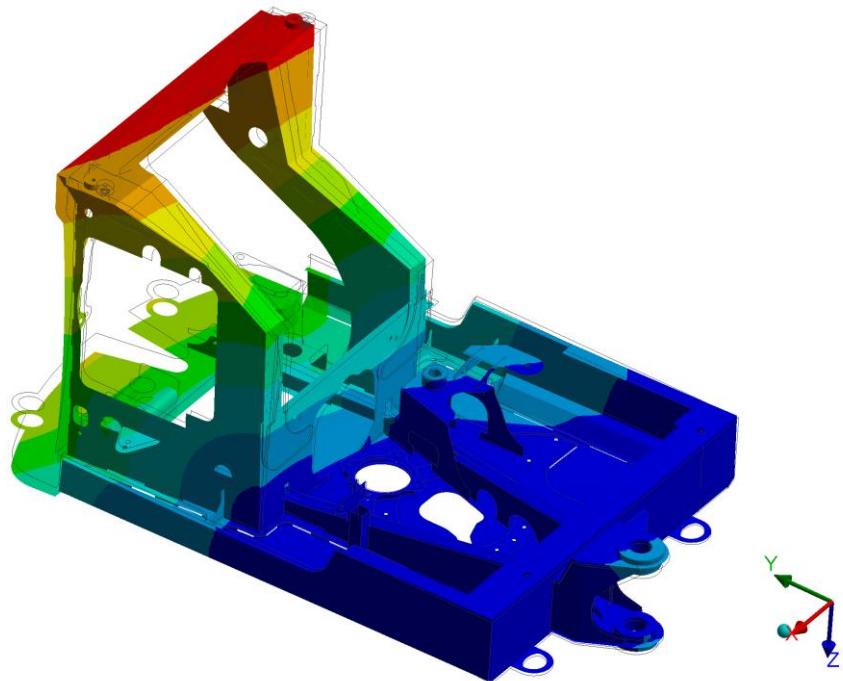
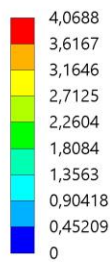
Total Deformation 3  
Type: Total Deformation  
Frequency: 19,765 Hz  
Unit: mm  
Custom  
Max: 6,0955  
Min: 0  
15.05.2018 6:42



Obr. 28 E15\_2 – vlastní tvar struktury 3

**B: Modal**

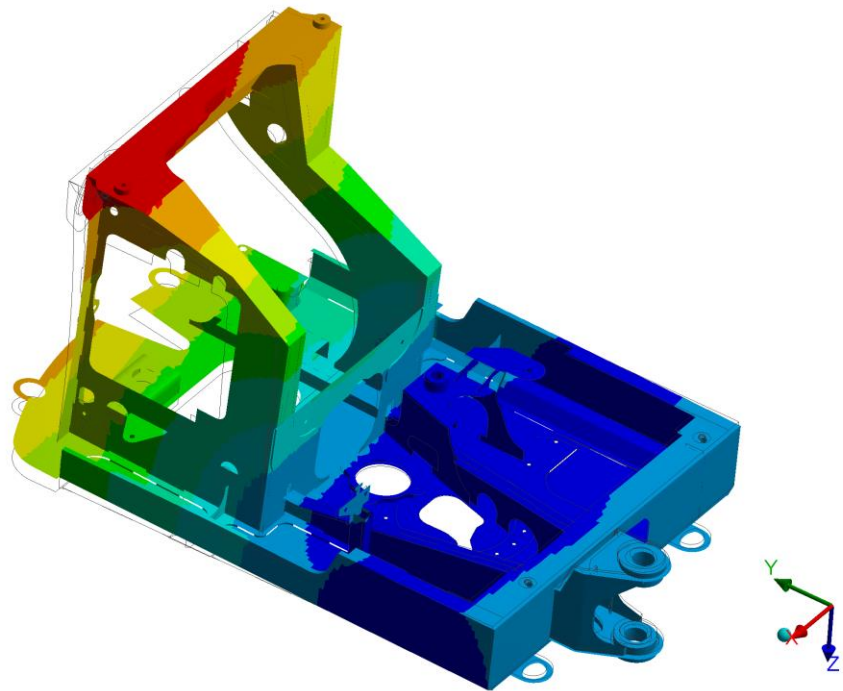
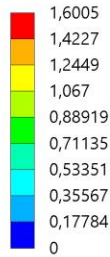
Total Deformation 4  
Type: Total Deformation  
Frequency: 23,782 Hz  
Unit: mm  
Custom  
Max: 6,1441  
Min: 0  
15.05.2018 6:42



Obr. 29 E15\_2 – vlastní tvar struktury 4

**B: Modal**

Total Deformation 5  
Type: Total Deformation  
Frequency: 30,204 Hz  
Unit: mm  
Custom  
Max: 20,592  
Min: 0  
15.05.2018 6:43

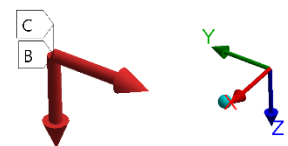
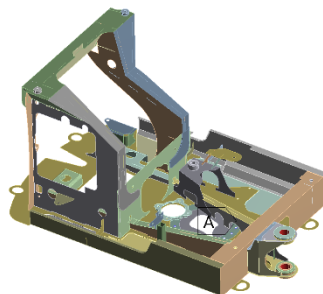


Obr. 30 E15\_2 – vlastní tvar struktury 5

**E: Static Structural\_e15\_2**

Zatizeni\_silou\_na\_lzici\_e15\_2  
Time: 1, s  
23.06.2018 12:45

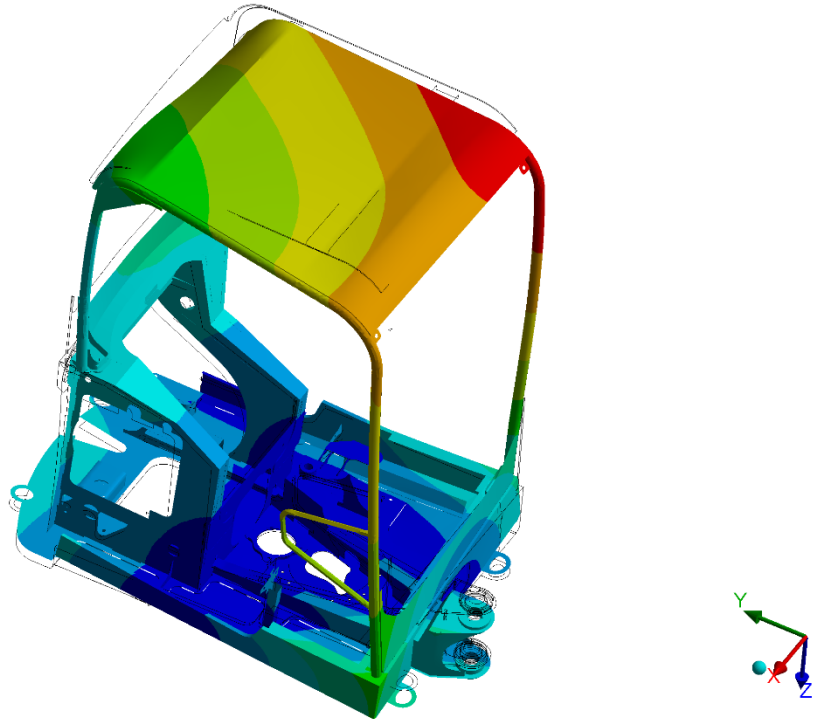
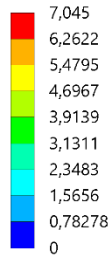
- A** Fixed Support
- B** Remote Force: 13270 N
- C** Remote Force 2: 16990 N



Obr. 31 E15\_2 – okrajové podmínky – zatížení silou na lžici

**E: Static Structural\_e15\_2**

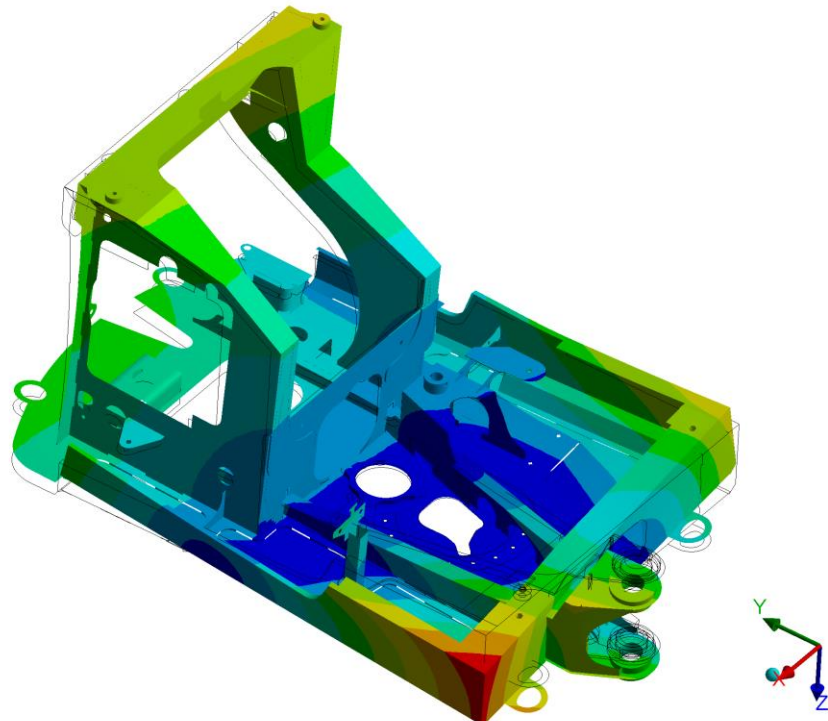
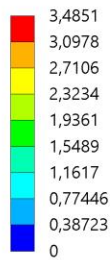
Total Deformation  
Type: Total Deformation  
Unit: mm  
Time: 1  
Custom  
Max: 7,045  
Min: 0  
23.06.2018 12:46



*Obr. 32 E15\_2 – deformace (vše) – zatížení silou na lžici*

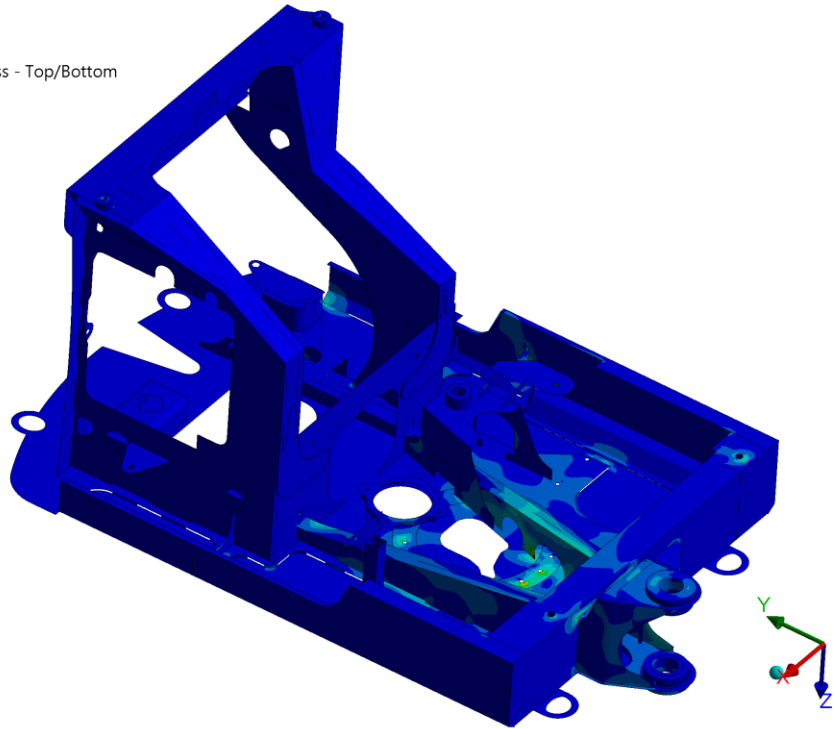
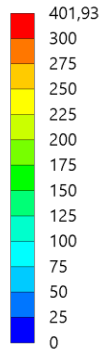
**E: Static Structural\_e15\_2**

Total Deformation  
Type: Total Deformation  
Unit: mm  
Time: 1  
Custom  
Max: 7,045  
Min: 0  
23.06.2018 12:48



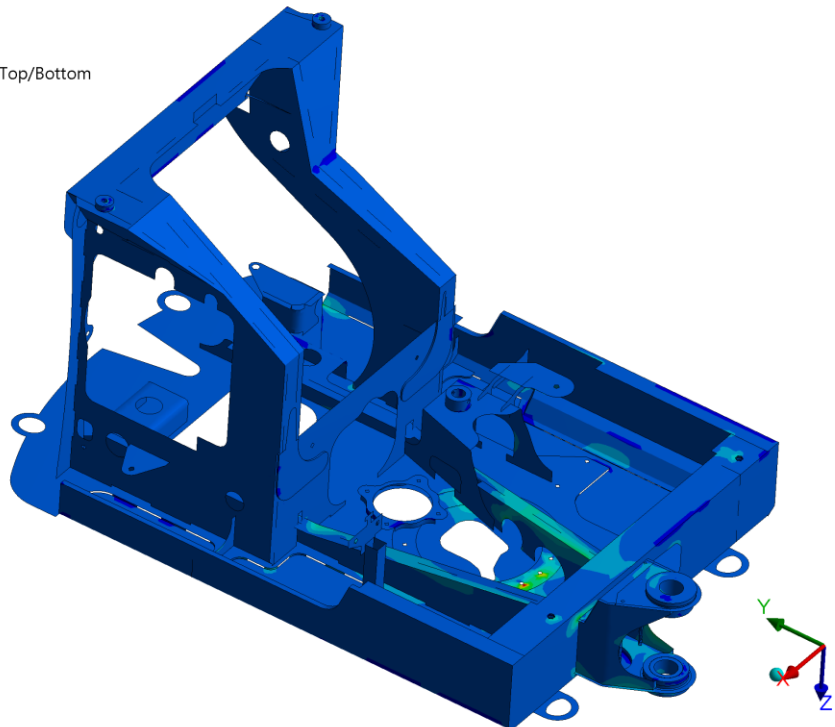
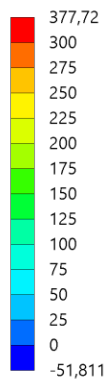
*Obr. 33 E15\_2 – deformace (struktura) – zatížení silou na lžici (pohled 1)*

**E: Static Structural\_e15\_2**  
 Equivalent Stress  
 Type: Equivalent (von-Mises) Stress - Top/Bottom  
 Unit: MPa  
 Time: 1  
 Max: 401,93  
 Min: 2,0669e-10  
 23.06.2018 12:53



Obr. 34 E15\_2 – ekvivalentní napětí – zatížení silou na lžici (pohled 1)

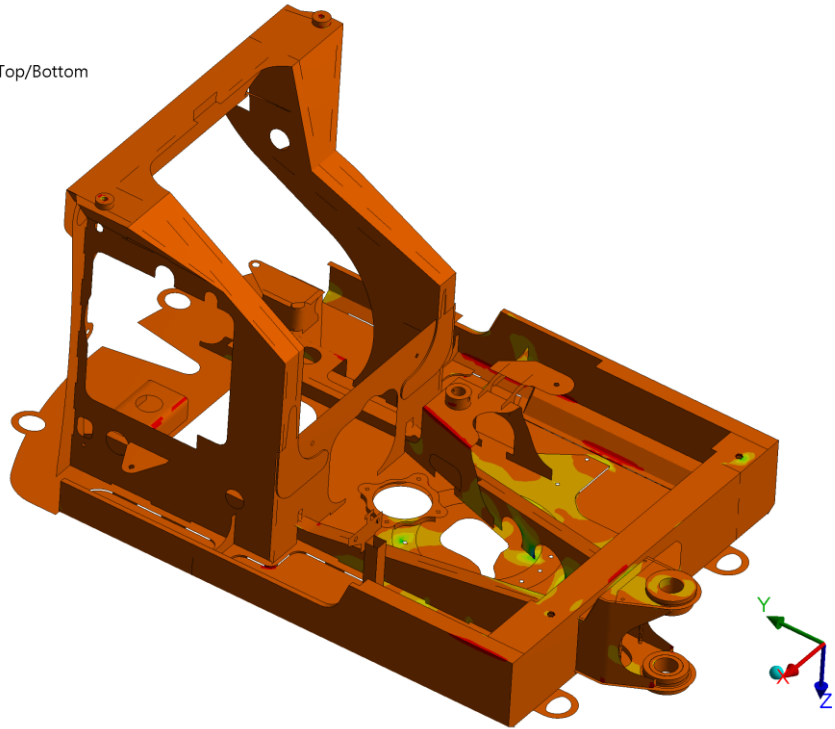
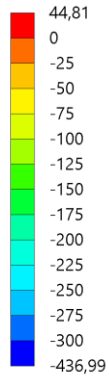
**E: Static Structural\_e15\_2**  
 Maximum Principal Stress  
 Type: Maximum Principal Stress - Top/Bottom  
 Unit: MPa  
 Time: 1  
 Max: 377,72  
 Min: -51,811  
 23.06.2018 12:53



Obr. 35 E15\_2 – maximální napětí – zatížení silou na lžici (pohled 1)

**E: Static Structural\_e15\_2**

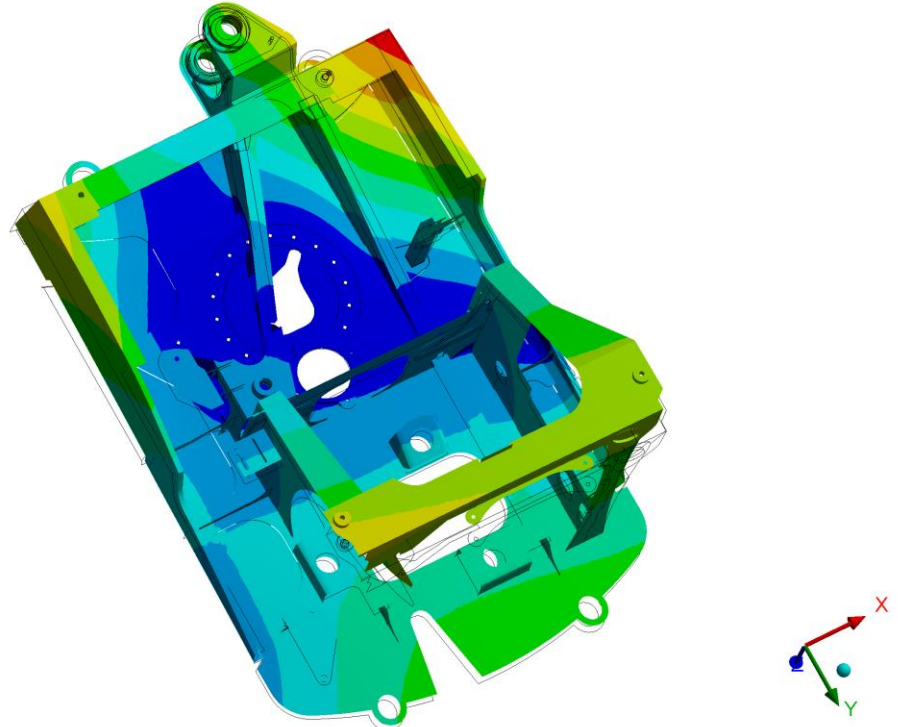
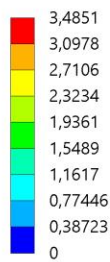
Minimum Principal Stress  
Type: Minimum Principal Stress - Top/Bottom  
Unit: MPa  
Time: 1  
Custom  
Max: 44,81  
Min: -436,99  
23.06.2018 12:53



Obr. 36 E15\_2 – minimální napětí – zatížení silou na lžici (pohled 1)

**E: Static Structural\_e15\_2**

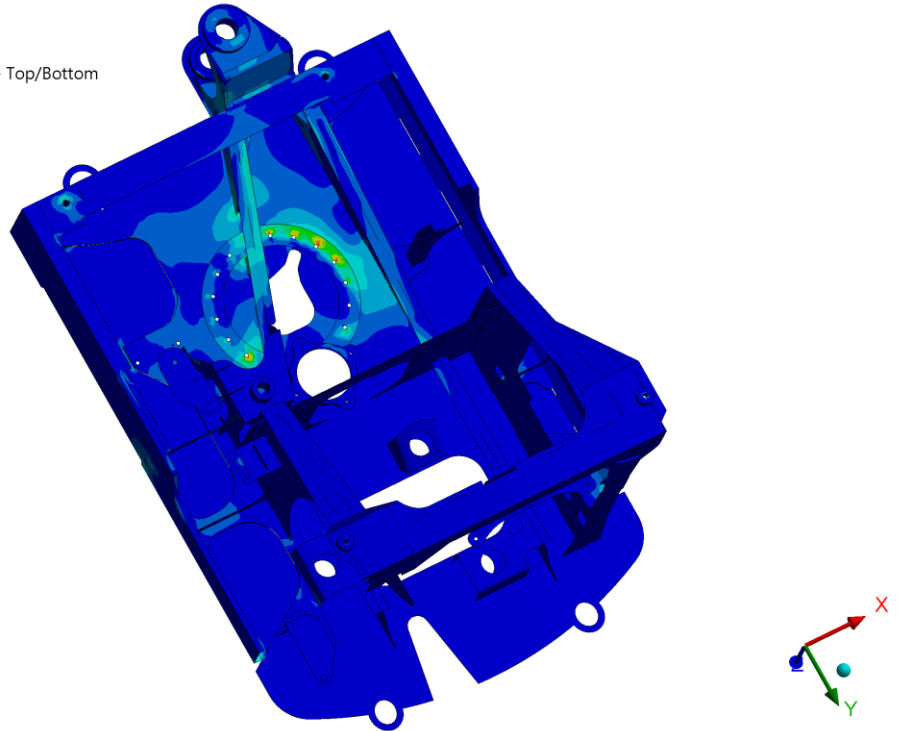
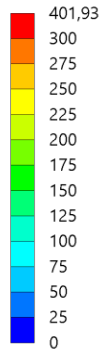
Total Deformation  
Type: Total Deformation  
Unit: mm  
Time: 1  
Custom  
Max: 7,045  
Min: 0  
23.06.2018 12:48



Obr. 37 E15\_2 – deformace (struktura) – zatížení silou na lžici (pohled 2)

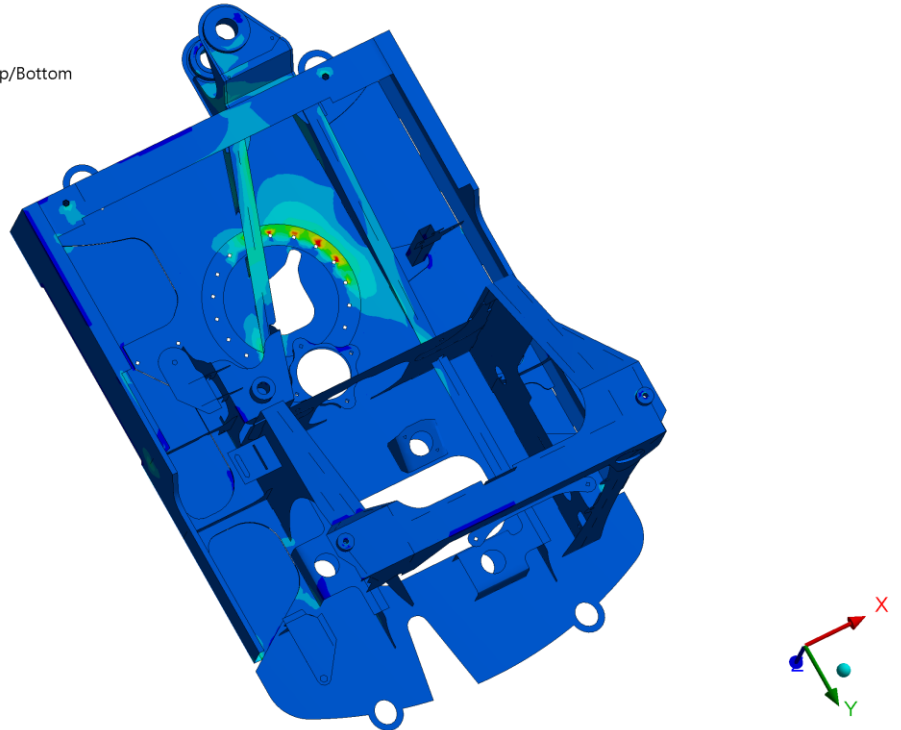
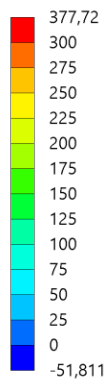


**E: Static Structural\_e15\_2**  
Equivalent Stress  
Type: Equivalent (von-Mises) Stress - Top/Bottom  
Unit: MPa  
Time: 1  
Max: 401,93  
Min: 2,0669e-10  
23.06.2018 12:51



Obr. 38 E15\_2 – ekvivalentní napětí – zatížení silou na lžici (pohled 2)

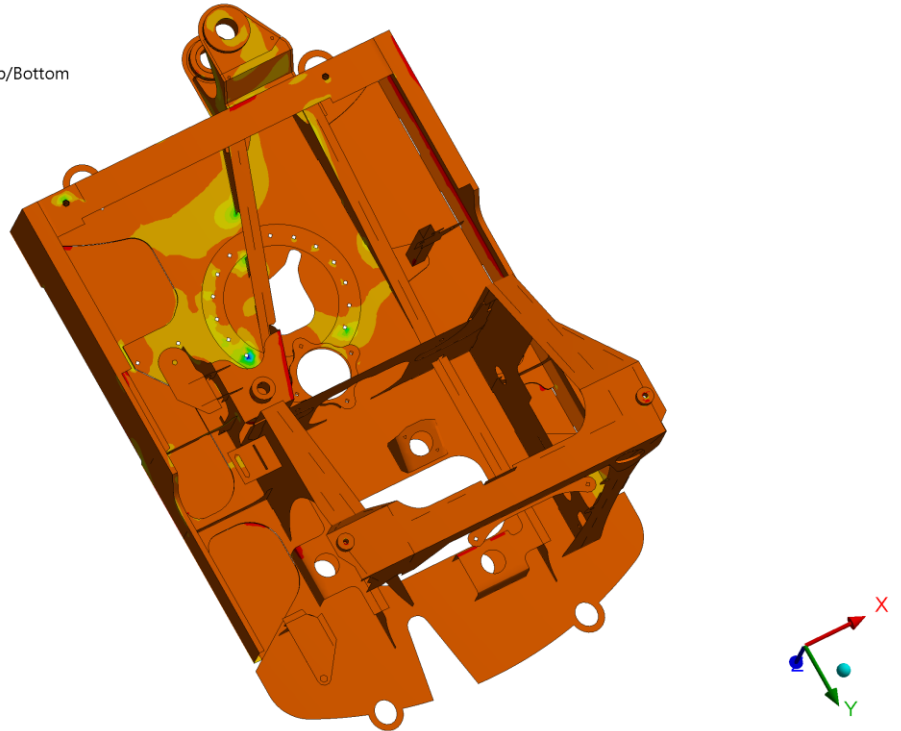
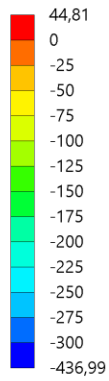
**E: Static Structural\_e15\_2**  
Maximum Principal Stress  
Type: Maximum Principal Stress - Top/Bottom  
Unit: MPa  
Time: 1  
Max: 377,72  
Min: -51,811  
23.06.2018 12:52



Obr. 39 E15\_2 – maximální napětí – zatížení silou na lžici (pohled 2)

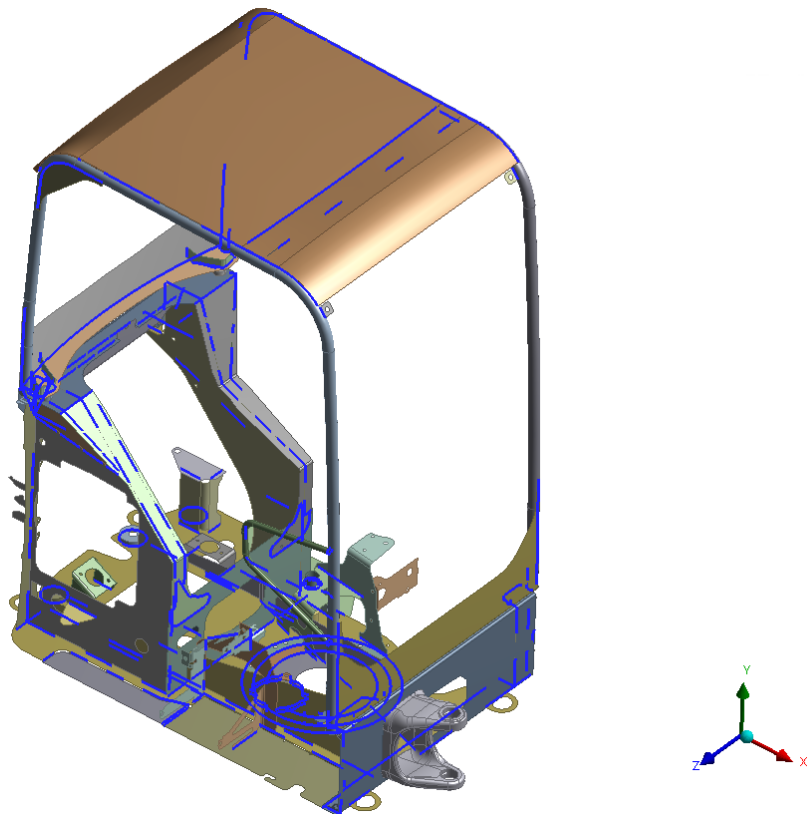


**E: Static Structural\_e15\_2**  
 Minimum Principal Stress  
 Type: Minimum Principal Stress - Top/Bottom  
 Unit: MPa  
 Time: 1  
 Custom  
 Max: 44,81  
 Min: -436,99  
 23.06.2018 12:52

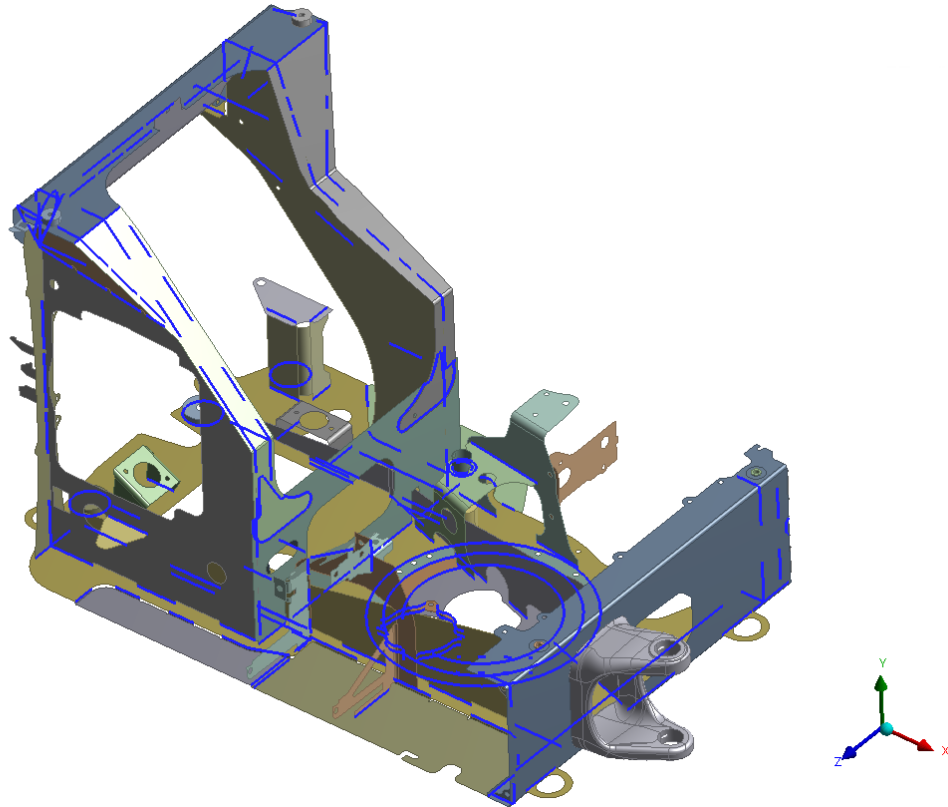


Obr. 40 E15\_2 – minimální napětí – zatížení silou na lžici (pohled 2)

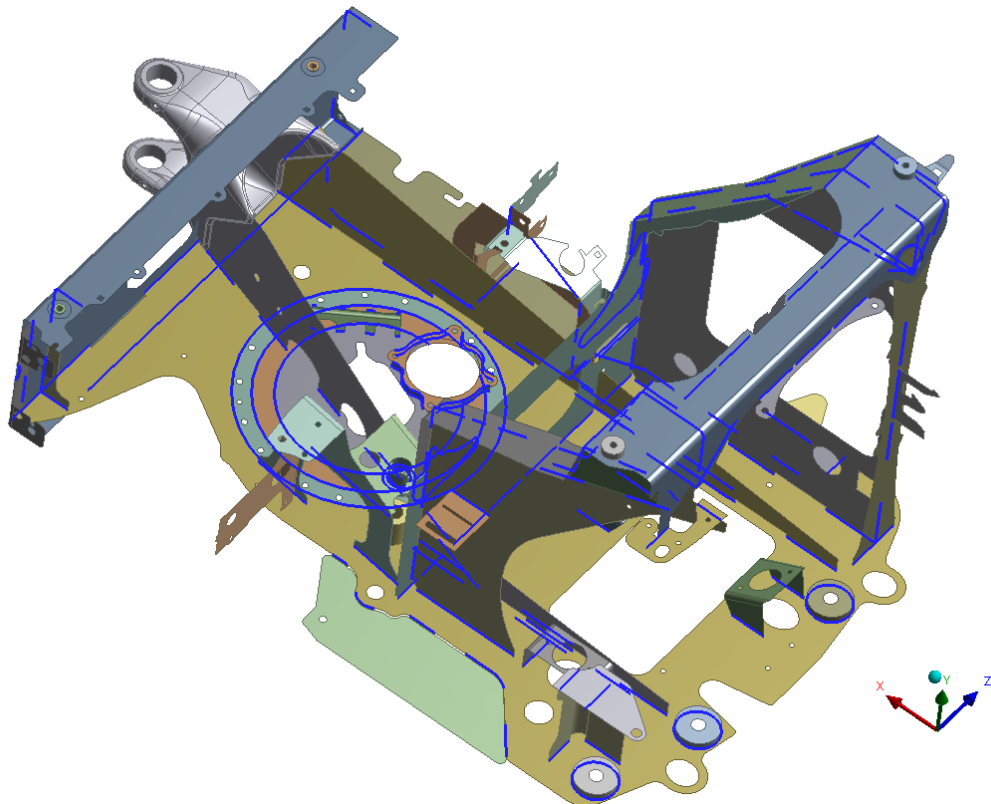
## E17



Obr. 41 E17 – svary (vše)



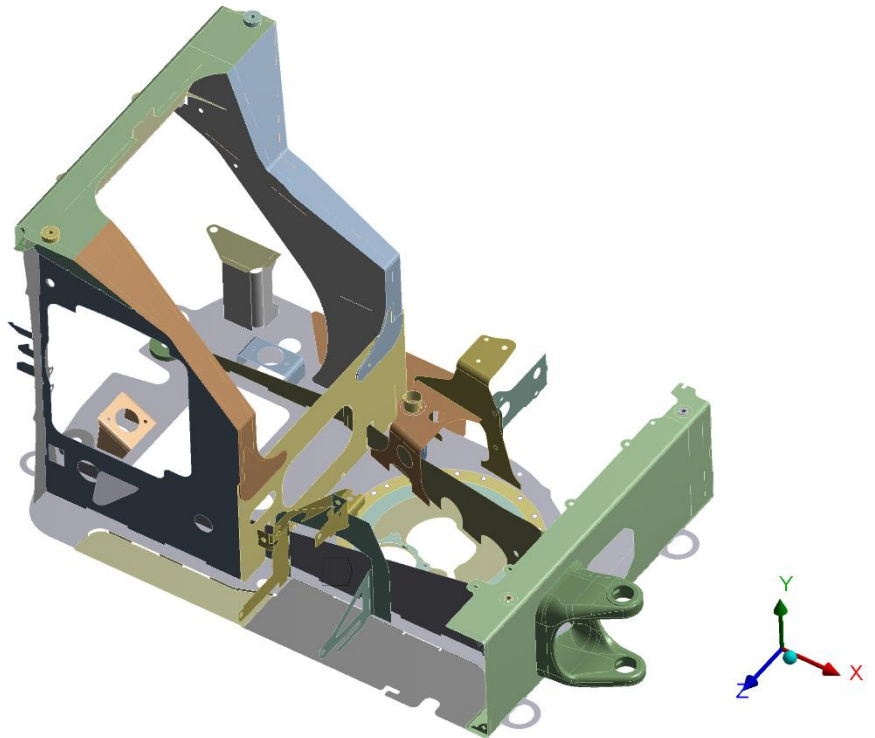
Obr. 42 E17 – svary (horní struktura stroje 1)



Obr. 43 E17 – svary (horní struktura stroje 2)


**B: Modal**  
Fixed Support  
Frequency: N/A  
23.06.2018 16:19

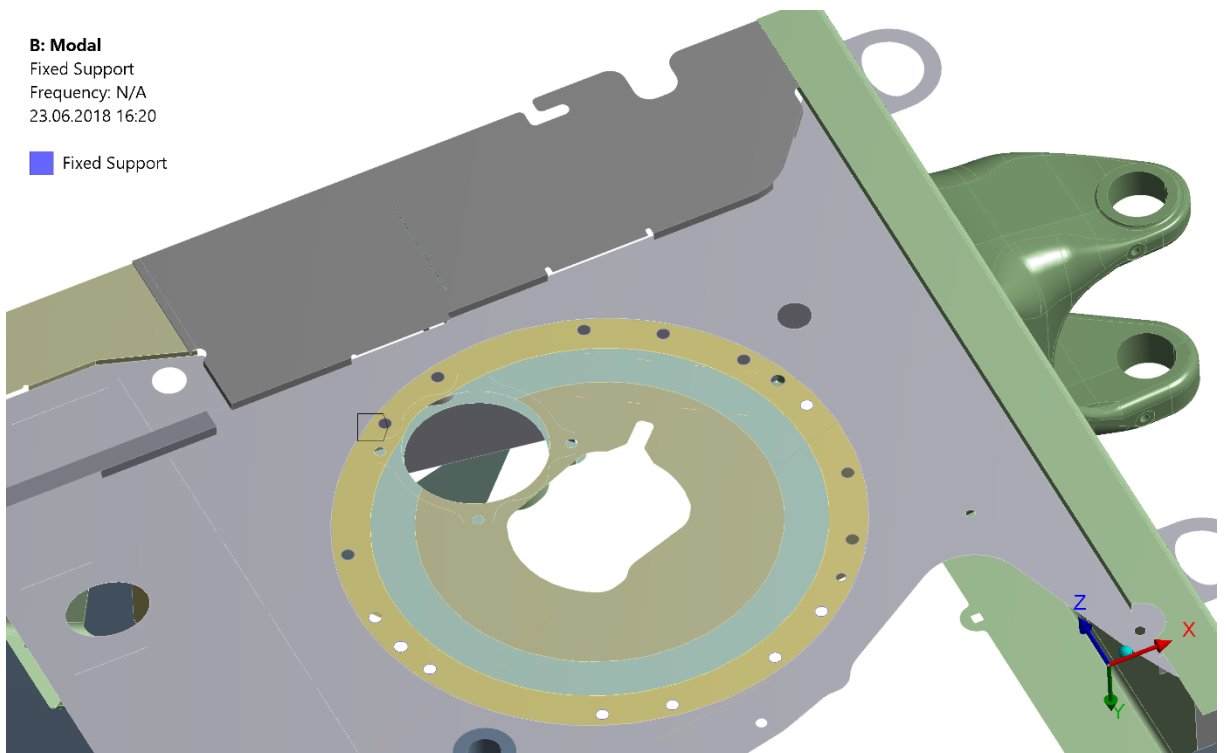
 Fixed Support



*Obr. 44 E17 – pevné uložení*

**B: Modal**  
Fixed Support  
Frequency: N/A  
23.06.2018 16:20

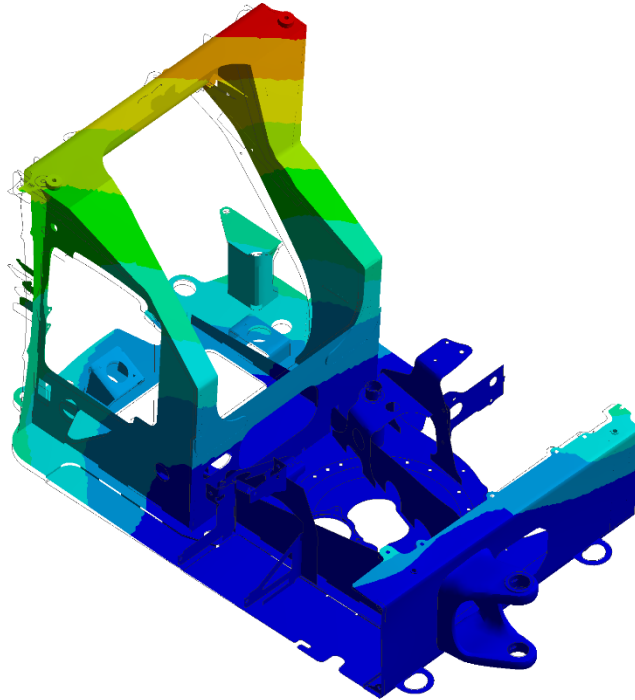
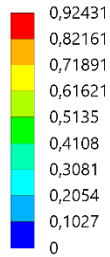
 Fixed Support



*Obr. 45 E17 – pevné uložení - detail*

**B: Modal**

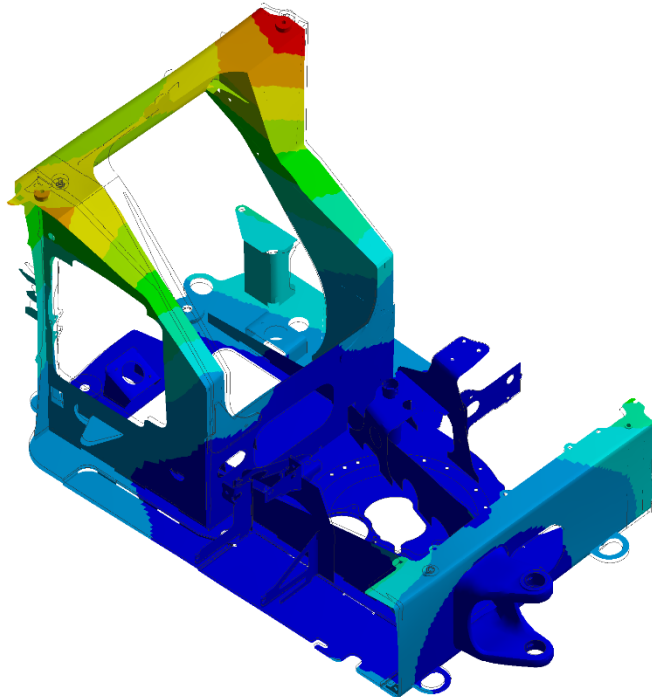
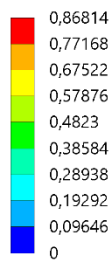
Total Deformation  
Type: Total Deformation  
Frequency: 10,195 Hz  
Unit: mm  
Custom  
Max: 5,5868  
Min: 0  
15.05.2018 6:55



Obr. 46 E17 – vlastní tvar struktury 1

**B: Modal**

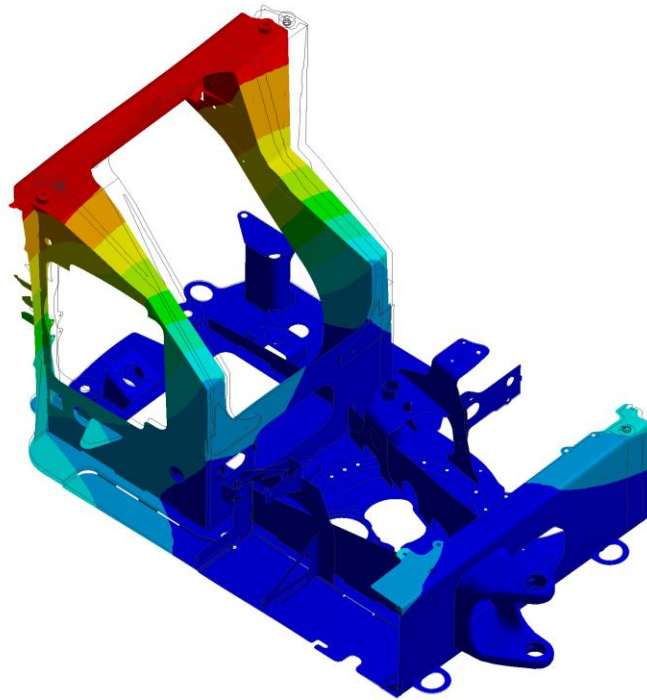
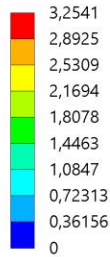
Total Deformation 2  
Type: Total Deformation  
Frequency: 12,653 Hz  
Unit: mm  
Custom  
Max: 7,6097  
Min: 0  
15.05.2018 6:56



Obr. 47 E17 – vlastní tvar struktury 2

**B: Modal**

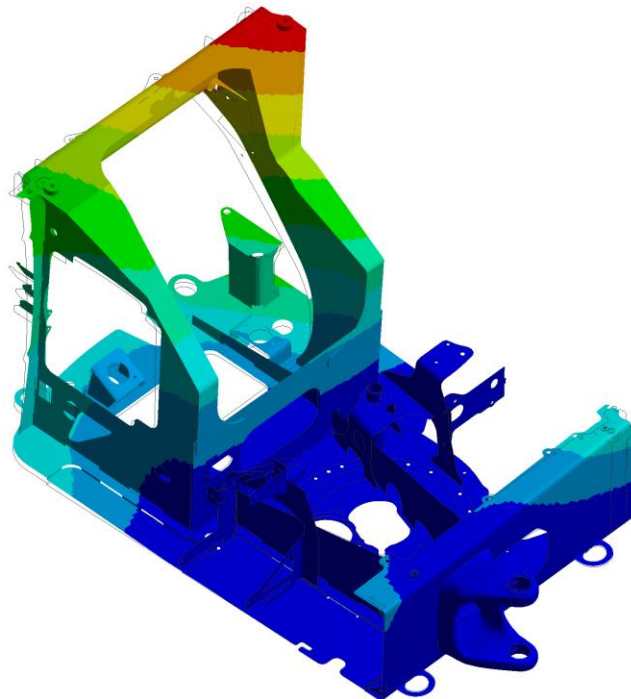
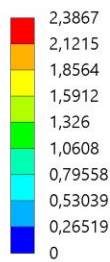
Total Deformation 3  
Type: Total Deformation  
Frequency: 22,779 Hz  
Unit: mm  
Custom  
Max: 6,6831  
Min: 0  
15.05.2018 6:56



Obr. 48 E17 – vlastní tvar struktury 3

**B: Modal**

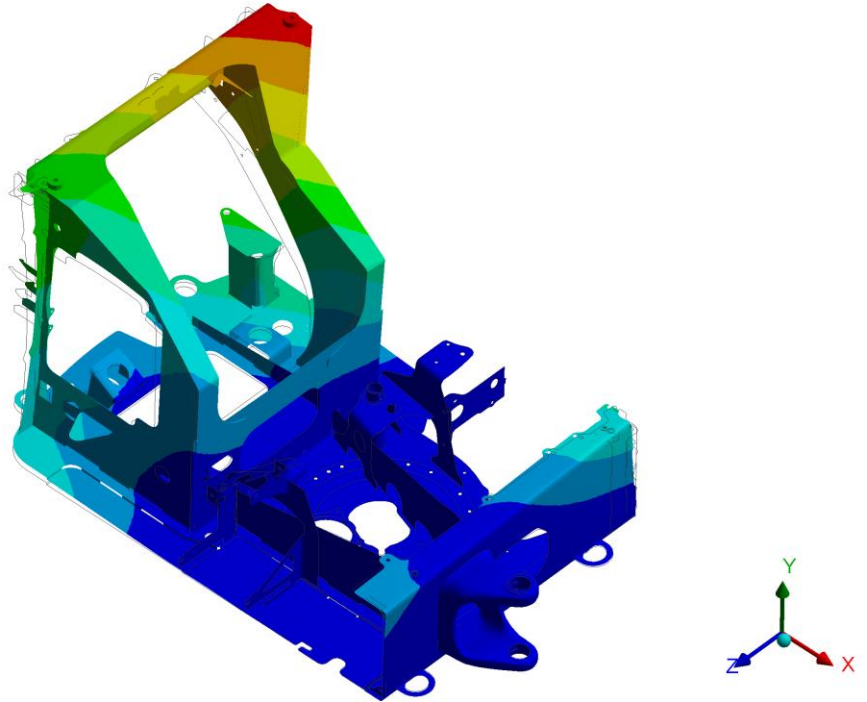
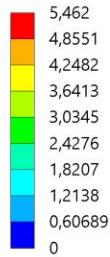
Total Deformation 4  
Type: Total Deformation  
Frequency: 28,392 Hz  
Unit: mm  
Custom  
Max: 18,899  
Min: 0  
15.05.2018 6:56



Obr. 49 E17 – vlastní tvar struktury 4

**B: Modal**

Total Deformation 5  
Type: Total Deformation  
Frequency: 33,263 Hz  
Unit: mm  
Custom  
Max: 12,732  
Min: 0  
15.05.2018 6:56

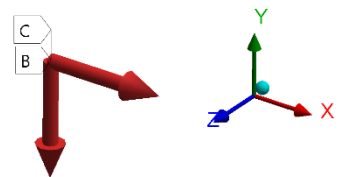
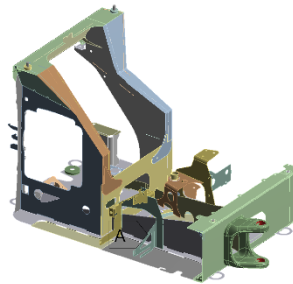


Obr. 50 E17 – vlastní tvar struktury 5

**E: Static Structural\_e\_17**

Zatizeni\_silou\_na\_lzici\_e17  
Time: 1, s  
23.06.2018 15:18

- A** Fixed Support
- B** Remote Force: 13270 N
- C** Remote Force 2: 16990 N

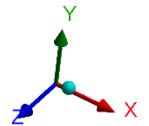
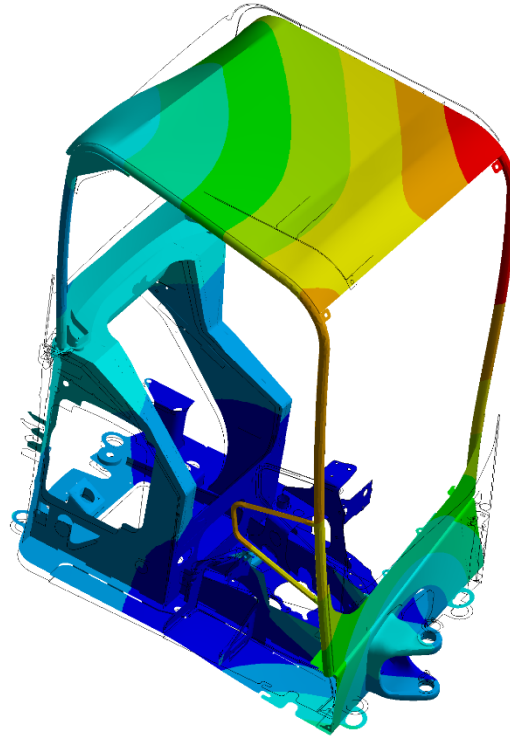
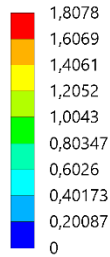


Obr. 51 E17 – okrajové podmínky – zatížení silou na lžici



**E: Static Structural\_e\_17**

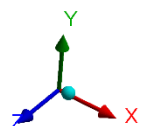
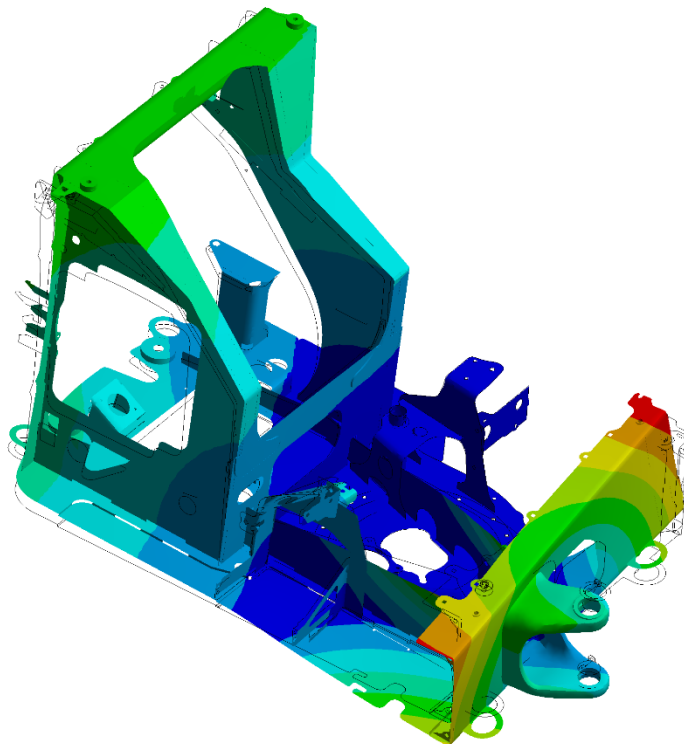
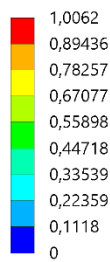
Total Deformation  
Type: Total Deformation  
Unit: mm  
Time: 1  
Custom  
Max: 1,8078  
Min: 0  
23.06.2018 15:19



Obr. 52 E17 – deformace (vše) – zatížení silou na lžici

**E: Static Structural\_e\_17**

Total Deformation  
Type: Total Deformation  
Unit: mm  
Time: 1  
Custom  
Max: 1,8078  
Min: 0  
23.06.2018 15:20



Obr. 53 E17 – deformace (struktura) – zatížení silou na lžici (pohled 1)

**E: Static Structural\_e\_17**

Equivalent Stress

Type: Equivalent (von-Mises) Stress - Top/Bottom

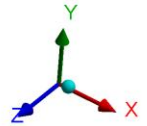
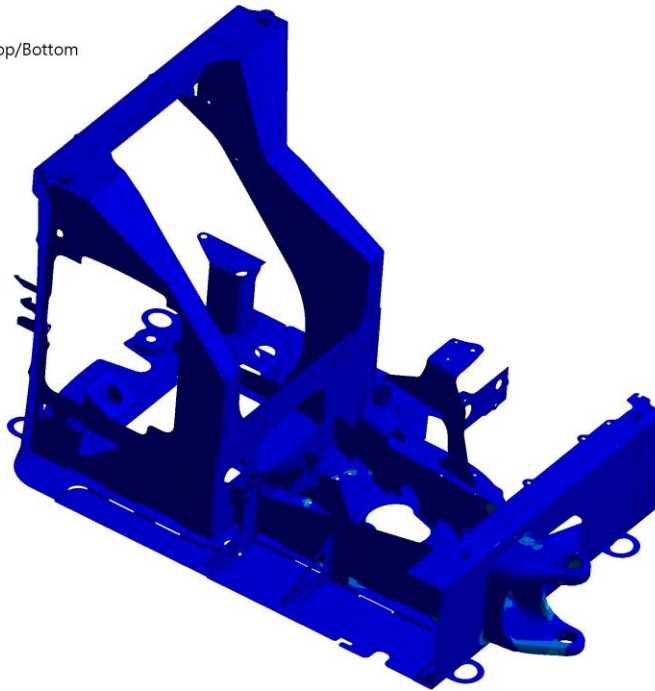
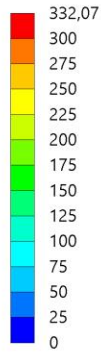
Unit: MPa

Time: 1

Max: 332,07

Min: 7,4926e-7

23.06.2018 15:22



*Obr. 54 E17 – ekvivalentní napětí – zatížení silou na lžici (pohled 1)*

**E: Static Structural\_e\_17**

Maximum Principal Stress

Type: Maximum Principal Stress - Top/Bottom

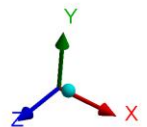
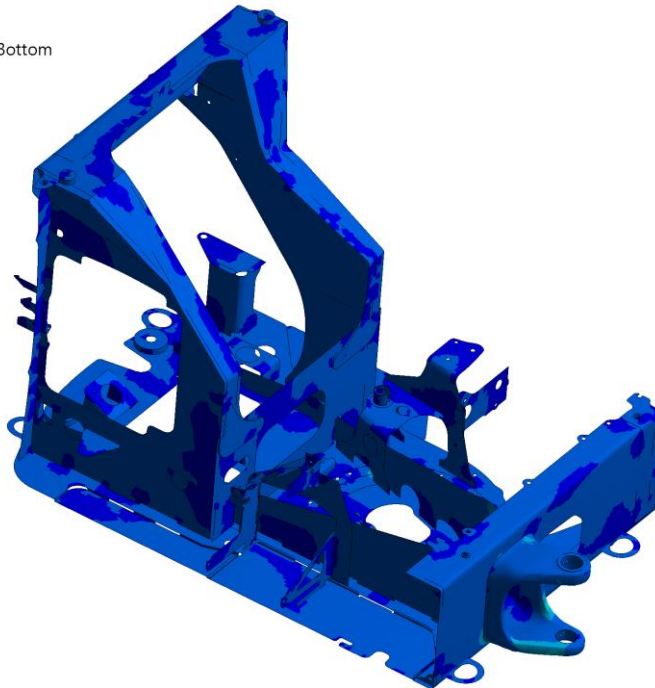
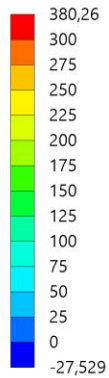
Unit: MPa

Time: 1

Max: 380,26

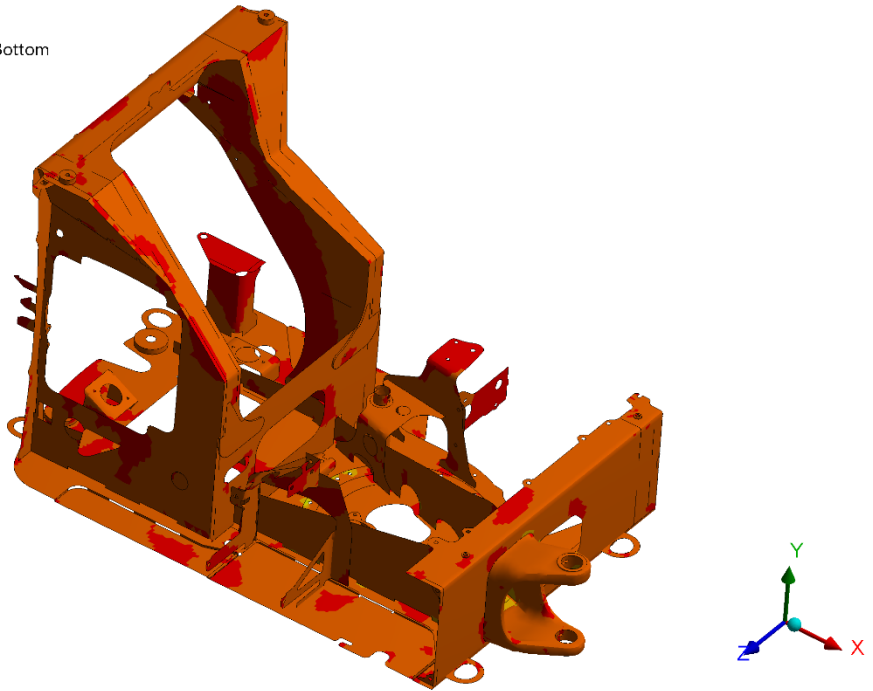
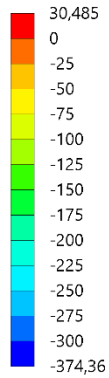
Min: -27,529

23.06.2018 15:22



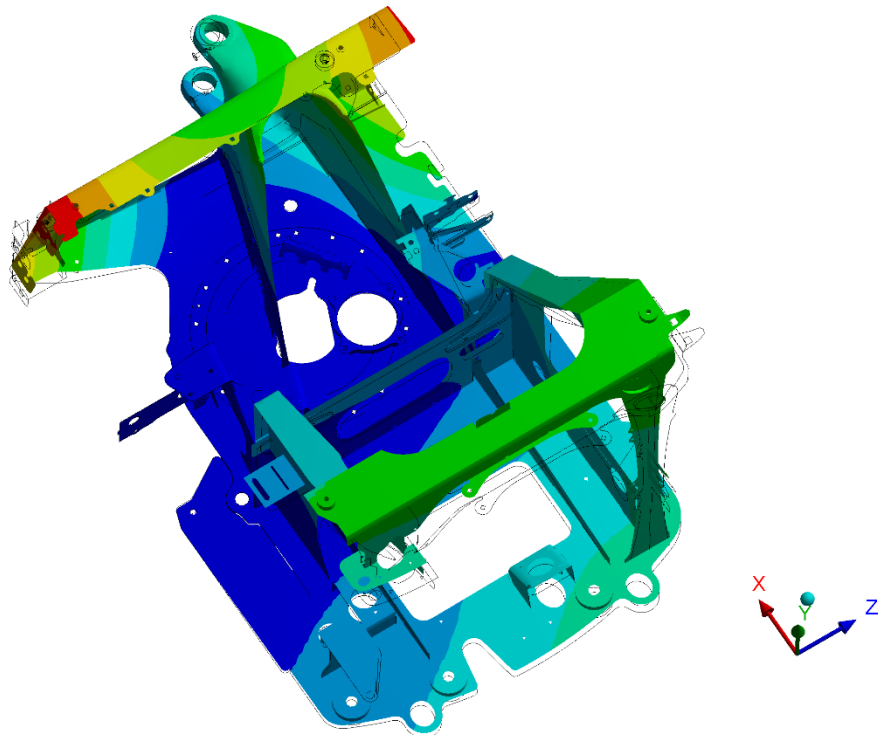
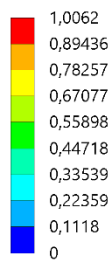
*Obr. 55 E17 – maximální napětí – zatížení silou na lžici (pohled 1)*

**E: Static Structural\_e\_17**  
 Minimum Principal Stress  
 Type: Minimum Principal Stress - Top/Bottom  
 Unit: MPa  
 Time: 1  
 Max: 30,485  
 Min: -374,36  
 23.06.2018 15:23



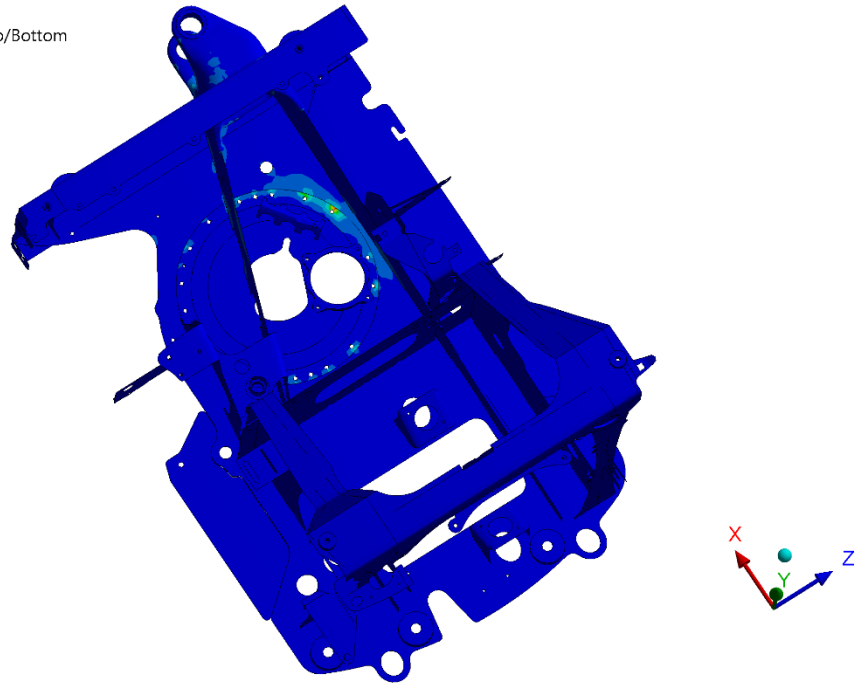
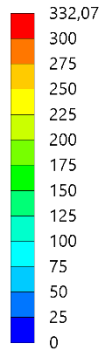
Obr. 56 E17 – minimální napětí – zatížení silou na lžici (pohled 1)

**E: Static Structural\_e\_17**  
 Total Deformation  
 Type: Total Deformation  
 Unit: mm  
 Time: 1  
 Custom  
 Max: 1,8078  
 Min: 0  
 23.06.2018 15:20



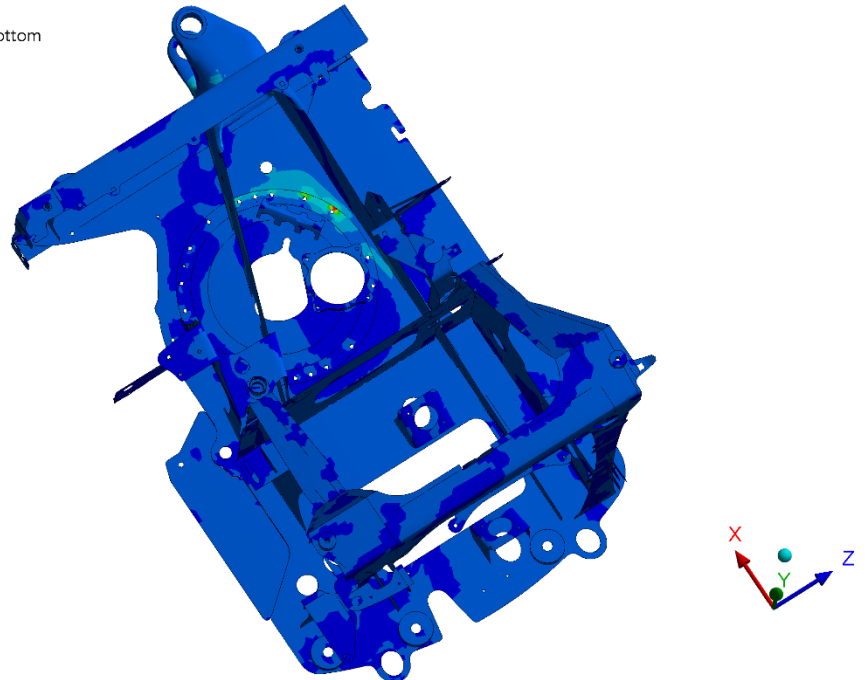
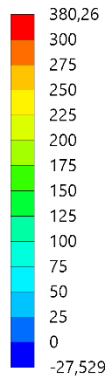
Obr. 57 E17 – deformace (struktura) – zatížení silou na lžici (pohled 2)

**E: Static Structural\_e\_17**  
Equivalent Stress  
Type: Equivalent (von-Mises) Stress - Top/Bottom  
Unit: MPa  
Time: 1  
Max: 332,07  
Min: 7,4926e-7  
23.06.2018 15:24



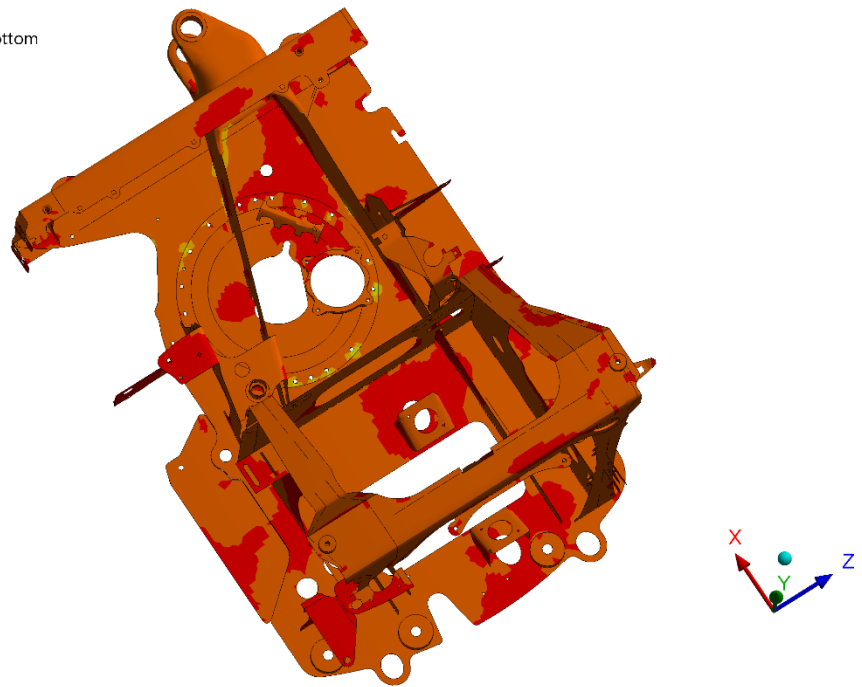
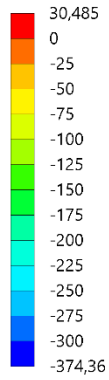
*Obr. 58 E17 – ekvivalentní napětí – zatížení silou na lžici (pohled 2)*

**E: Static Structural\_e\_17**  
Maximum Principal Stress  
Type: Maximum Principal Stress - Top/Bottom  
Unit: MPa  
Time: 1  
Max: 380,26  
Min: -27,529  
23.06.2018 15:23



*Obr. 59 E17 – maximální napětí – zatížení silou na lžici (pohled 2)*

**E: Static Structural\_e\_17**  
Minimum Principal Stress  
Type: Minimum Principal Stress - Top/Bottom  
Unit: MPa  
Time: 1  
Max: 30,485  
Min: -374,36  
23.06.2018 15:23



*Obr. 60 E17 – minimální napětí – zatížení silou na lžici (pohled 2)*