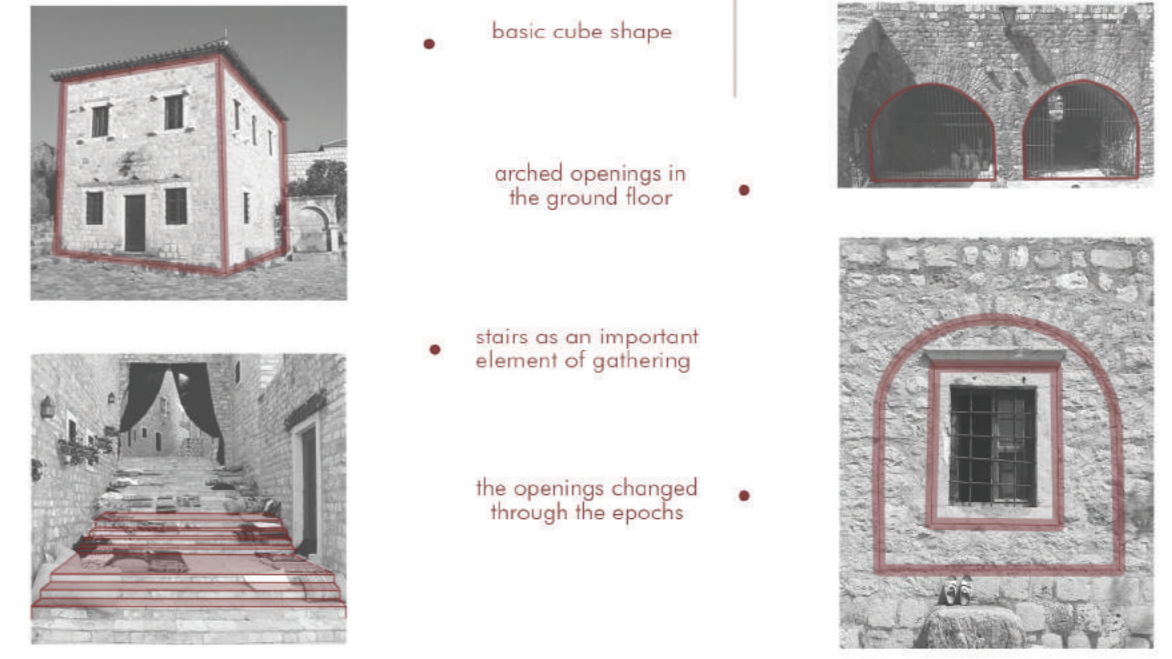


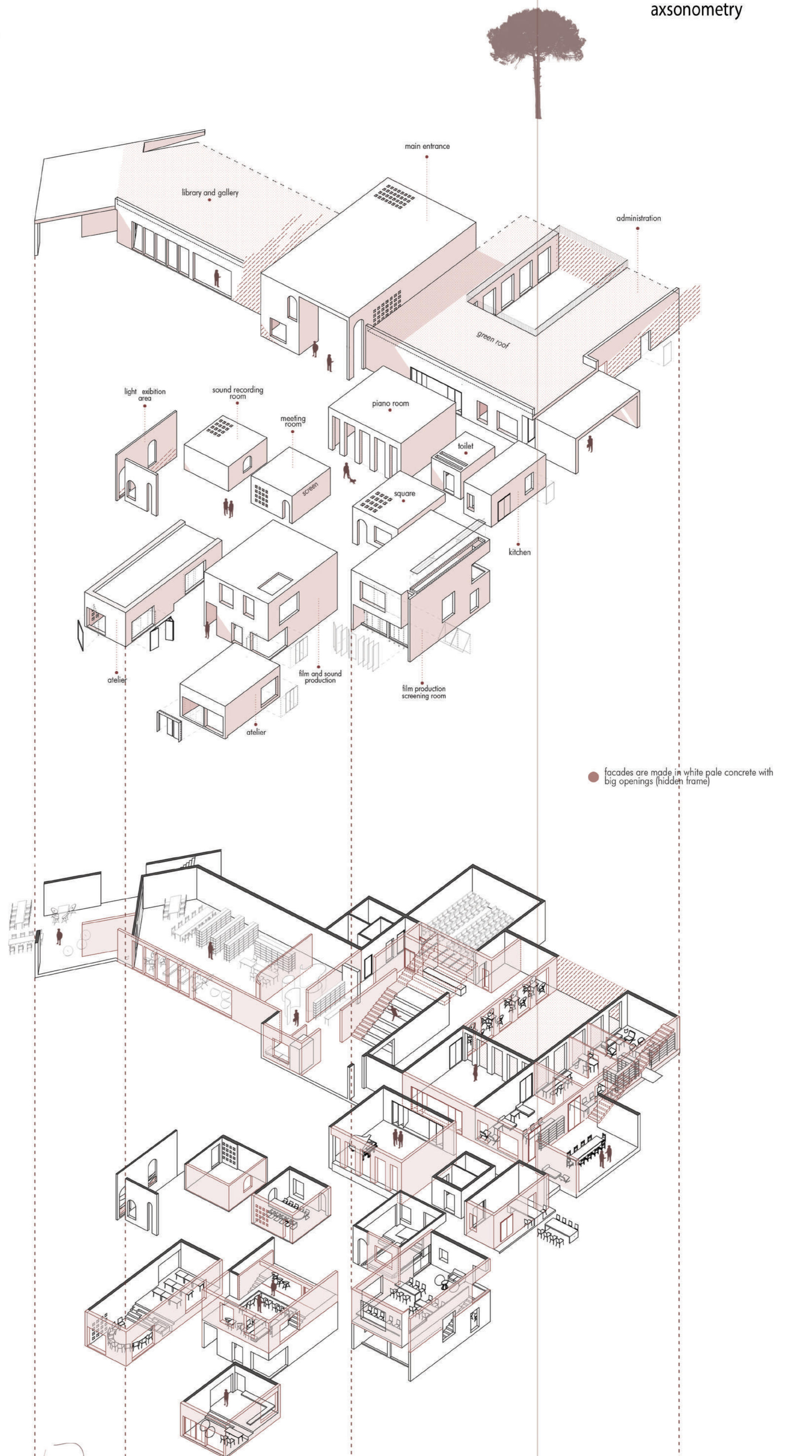


ground plan

elements used in design



axonometry



facades are made in white pale concrete with big openings (hidden frame)

lower path parallel to the upper one connecting two sides of peninsula through library
paths through the building designed by stairs and ramps, connecting all activities and leading to the beach

RESEARCH INSTITUTE OF FILM AND SOUND

Space and place are among the fundamental concepts in architecture. This research has introduced an extensional space which allows integration into the place.

The boundary space is a system of abstract mental-spatial phenomena of unstable, non-permanent, semi-logical, which differ and change depending on the user of space and activity in the space. The nature of this space depends on the intellect and sensibility of the observer. It was formed on the basis of the accumulation of the observer's vivid sensory impressions.

Salvador Dali shows the infinite space, where in the constant void he puts the events. These events are secondary elements and the emptiness is the primary one. In the passage of time, the present events will end, but the emptiness will remain constant.

Making the void in order to integrate activities. Idea was to make space which is not framed by walls but framed by activities and nature. If we permit the explicit permeation of space, activity and art with a constant external influence (of nature and people), we will allow art to inspire great idea.

section B B

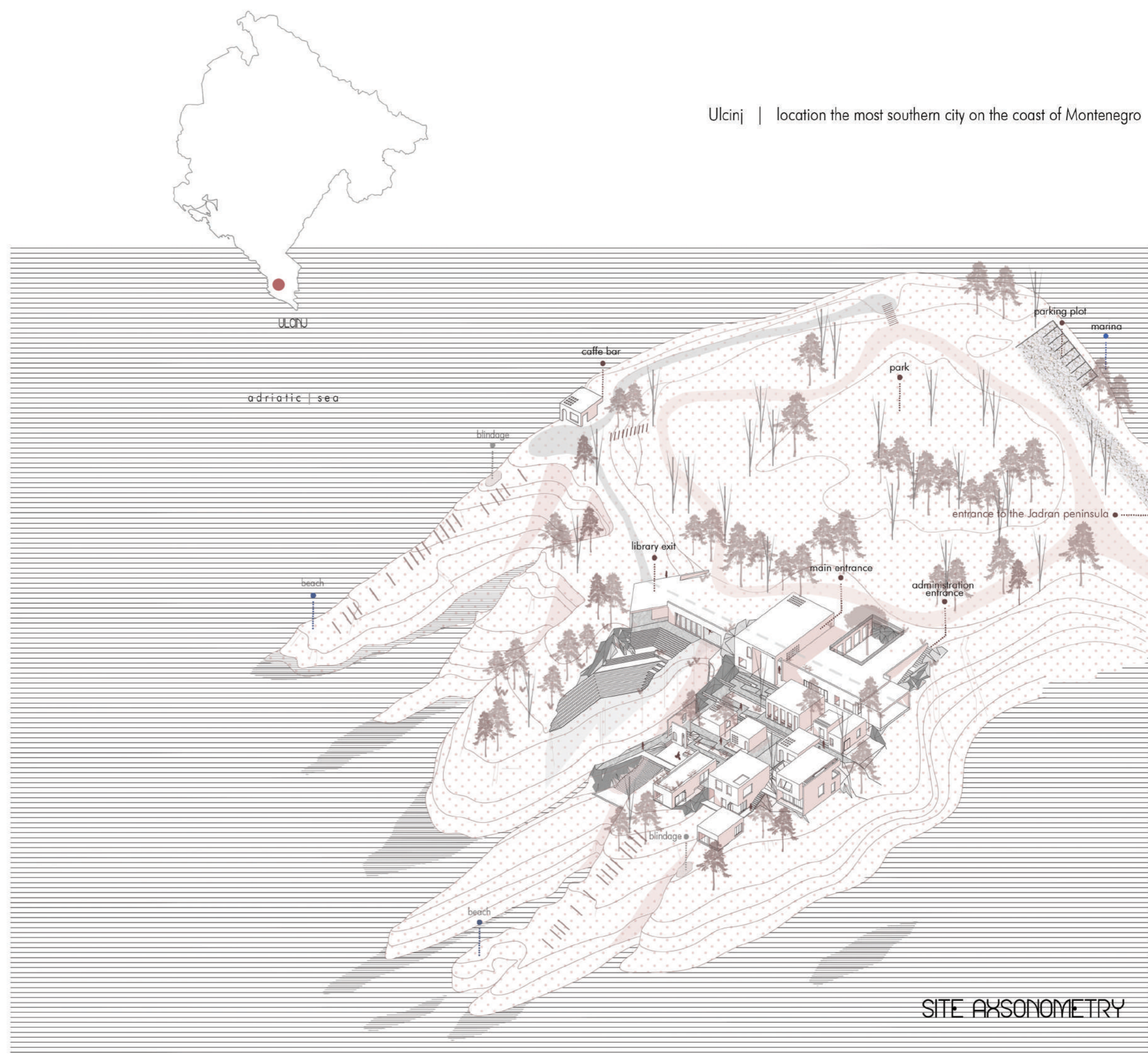
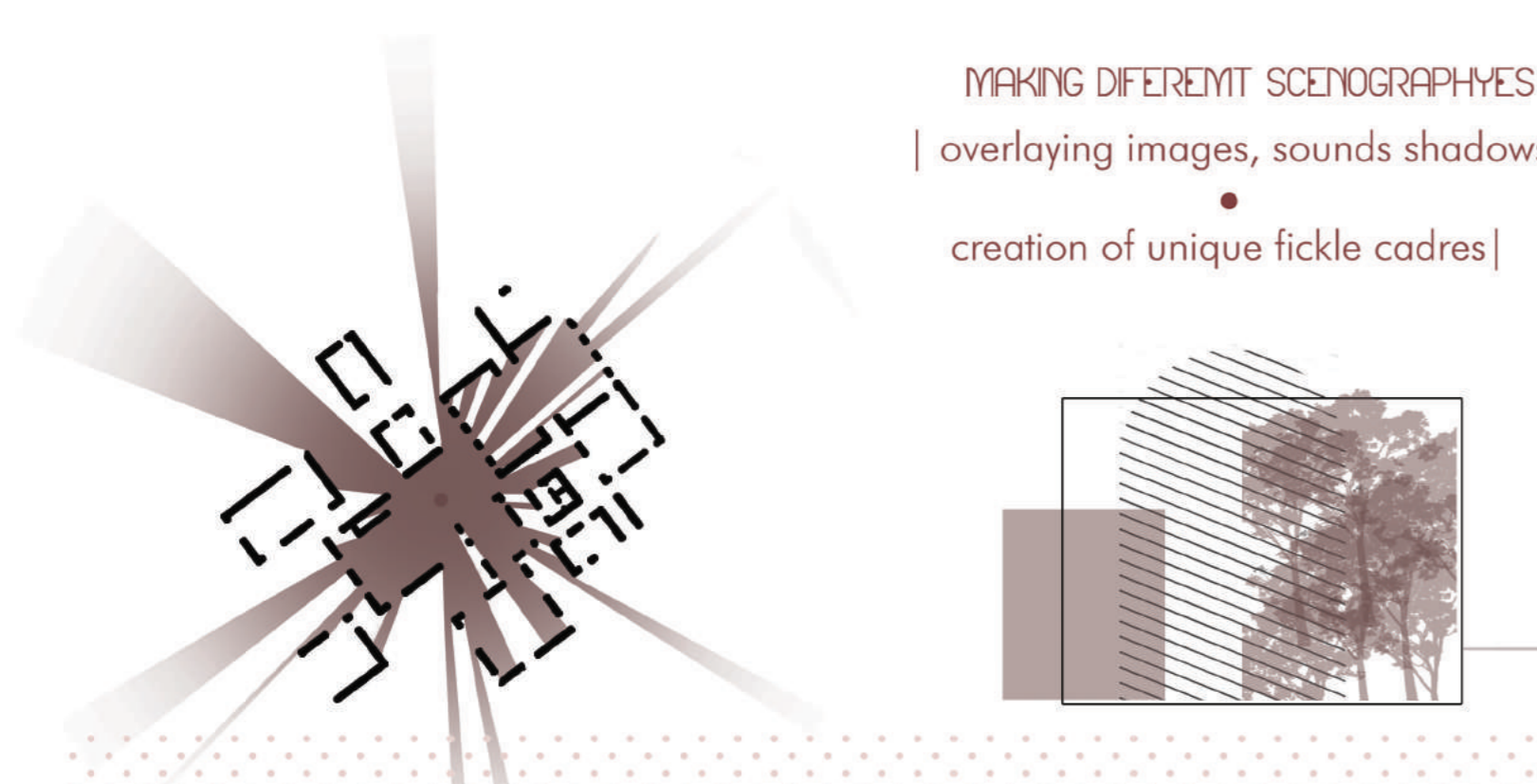
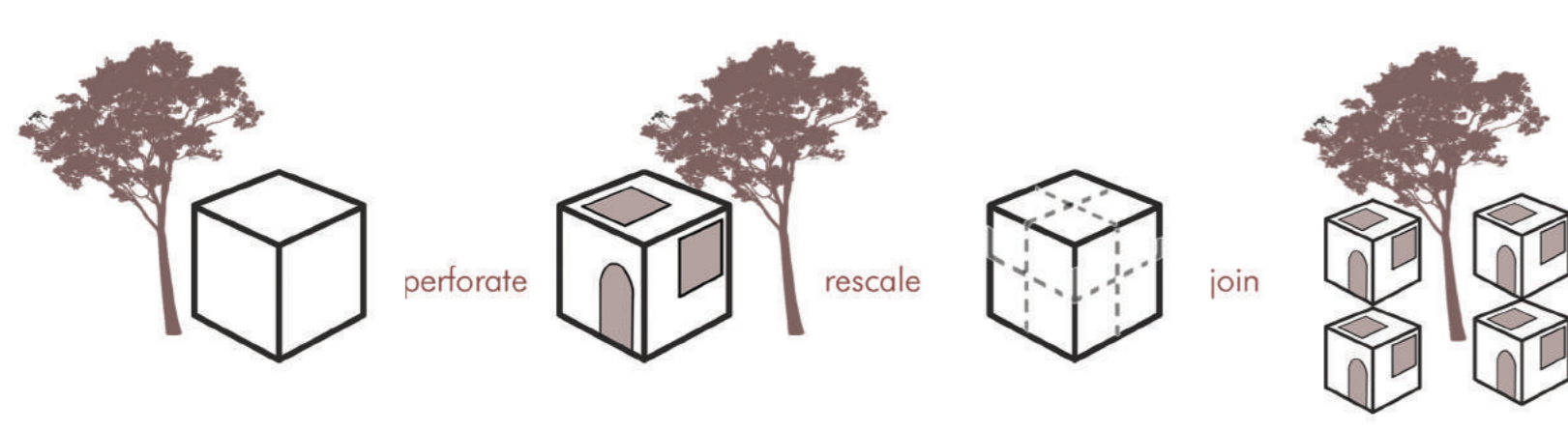
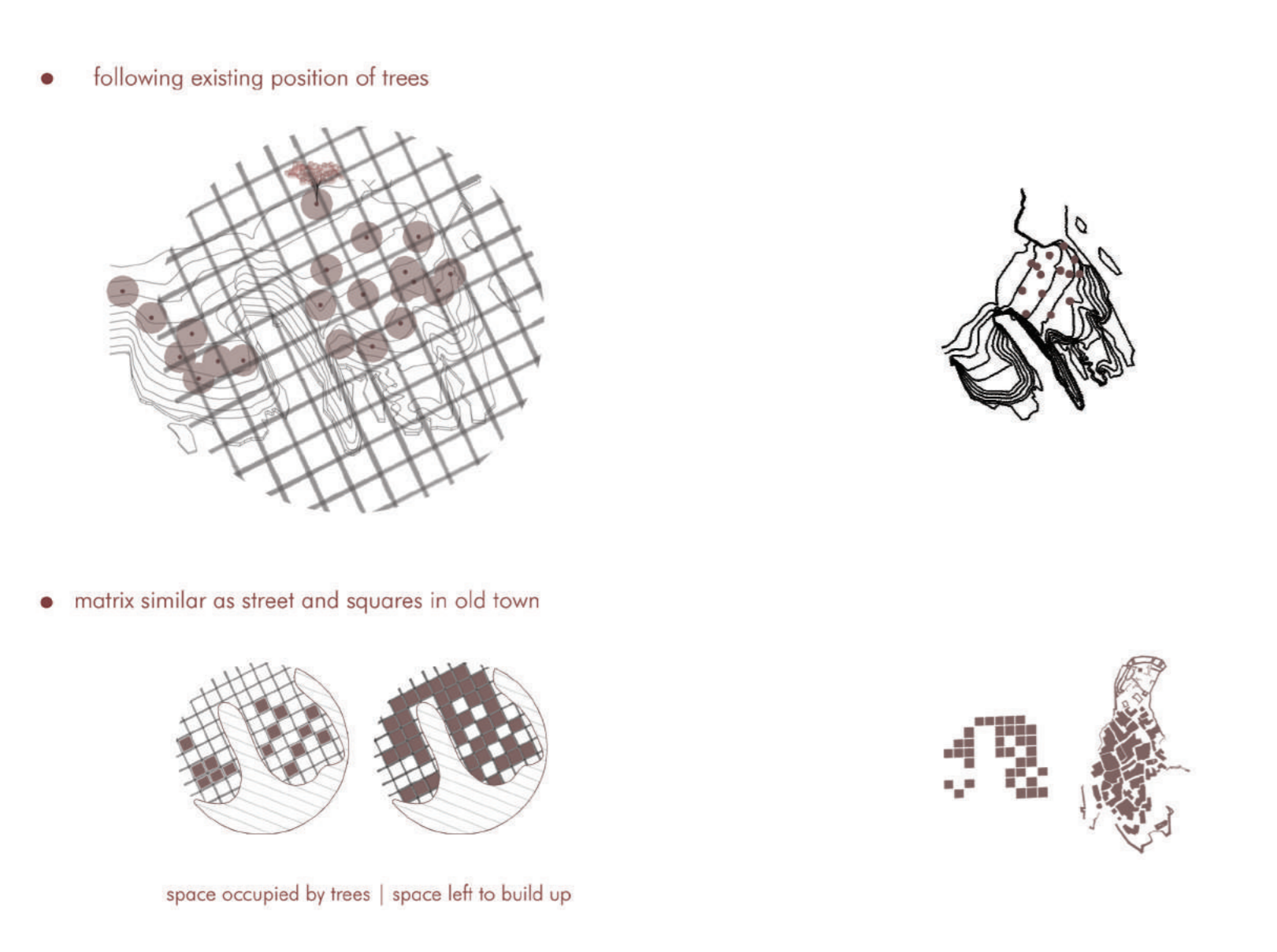
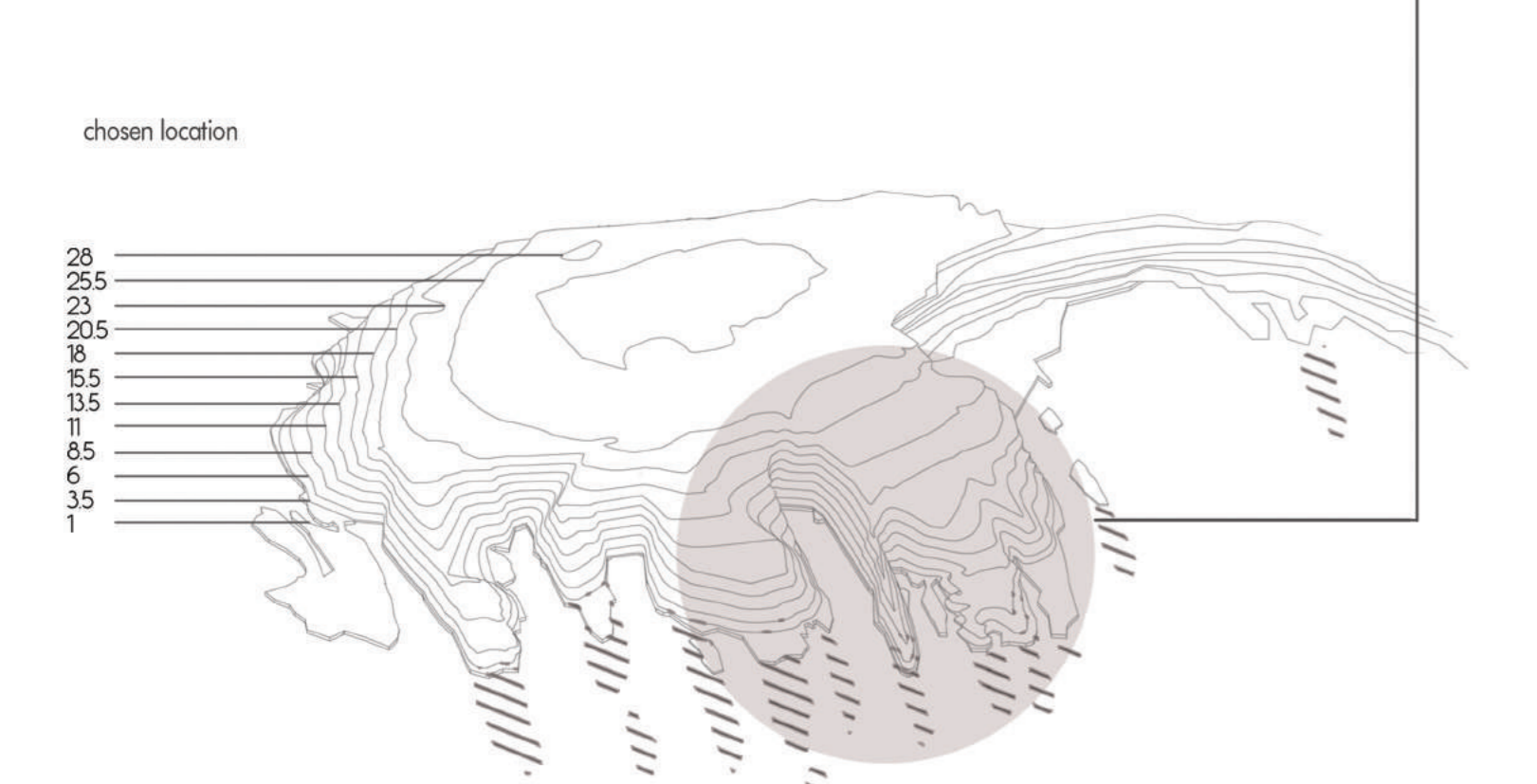
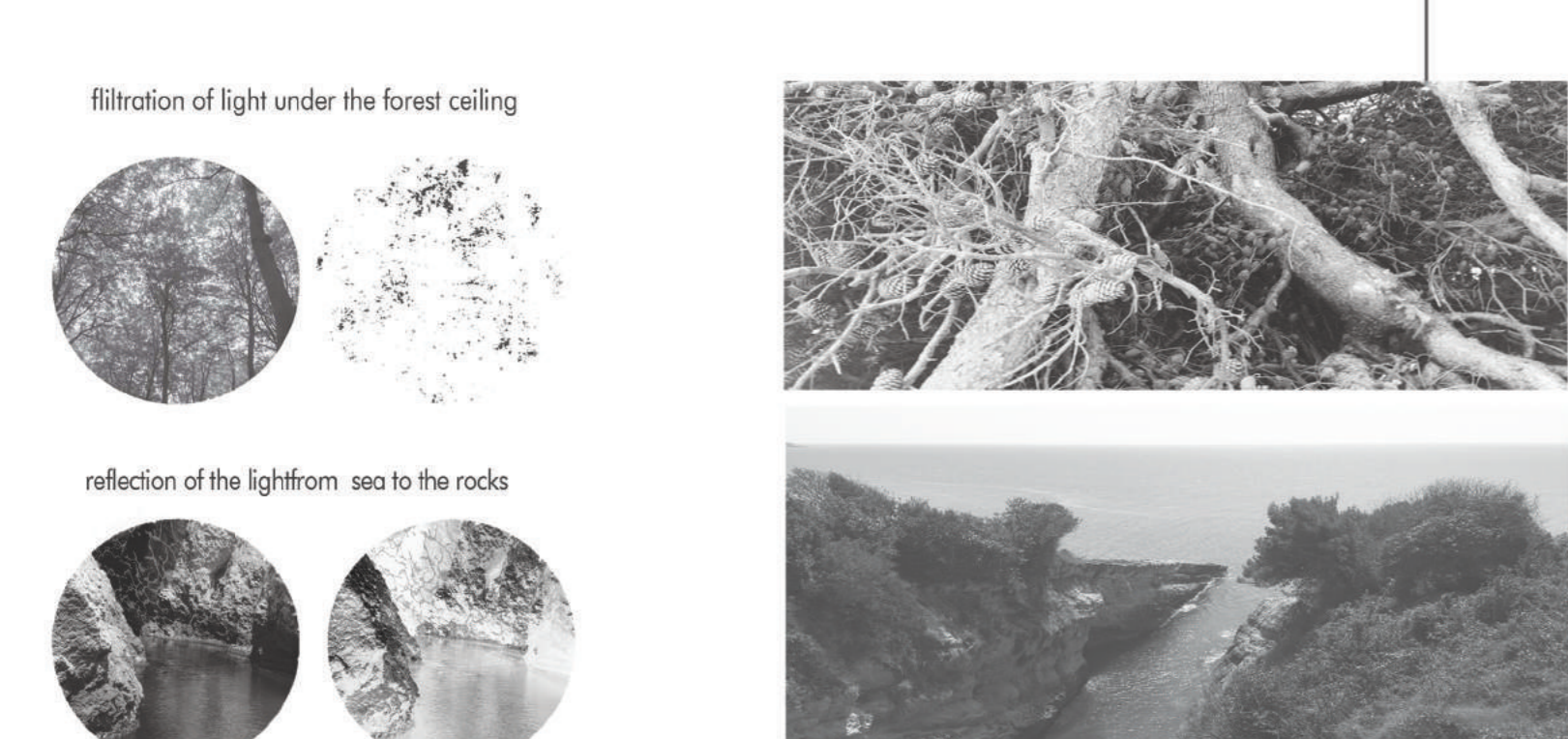
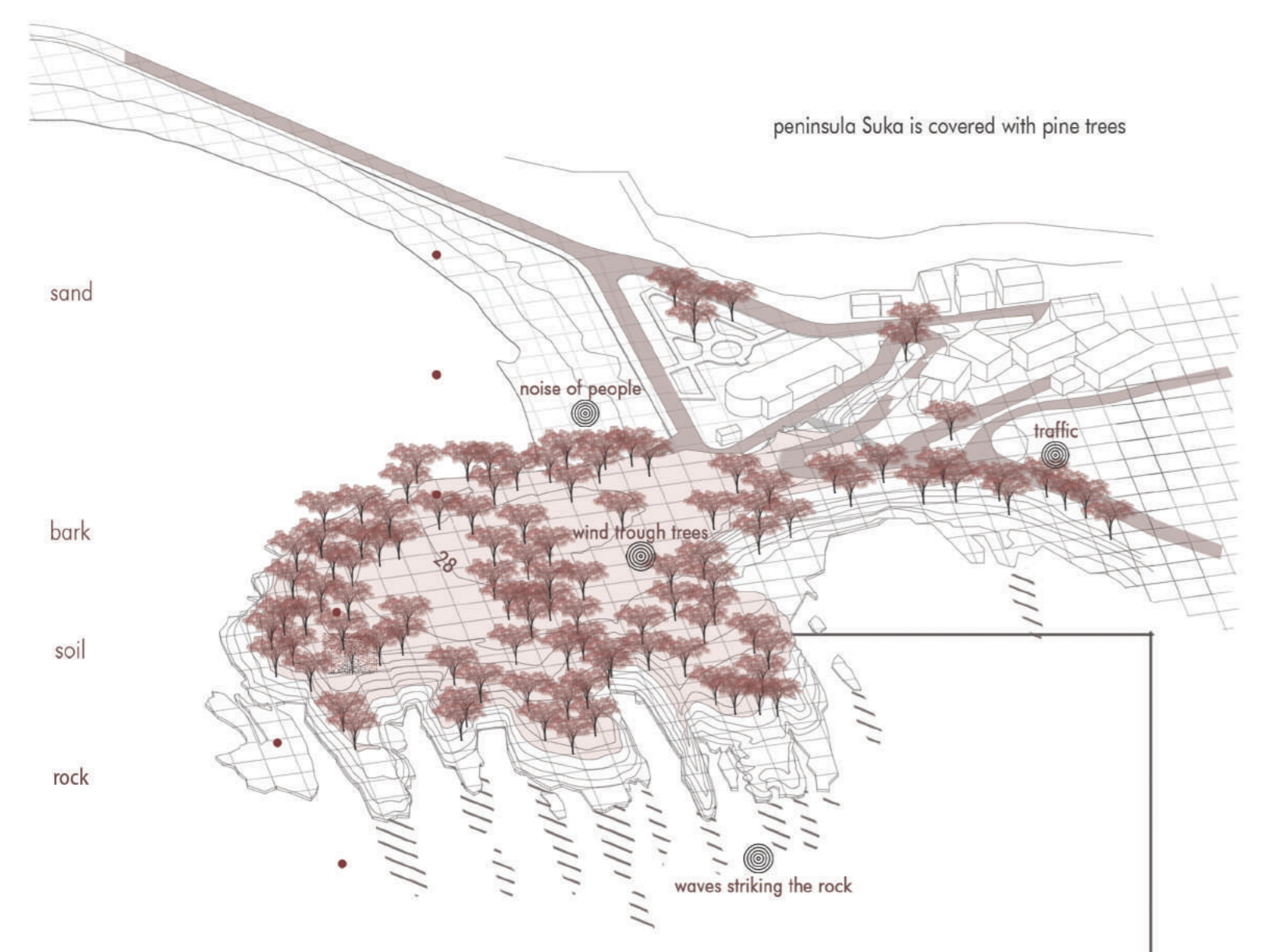
M. level

36
34
32
30
28
26
24
22
20
18
16
14
12
10
8
6
4
2
0





concept and analysis



Architecture here is not subordinate to nature nor is it a violation. She is in harmony with her. Both architecture and nature have the left emptiness (possibly) to develop further and take it without disturbing them and not interfering with one another, as the coast and the sea, there is a clear boundary between them.

