

current state/ Stvanice island

analysis/Stvanice island

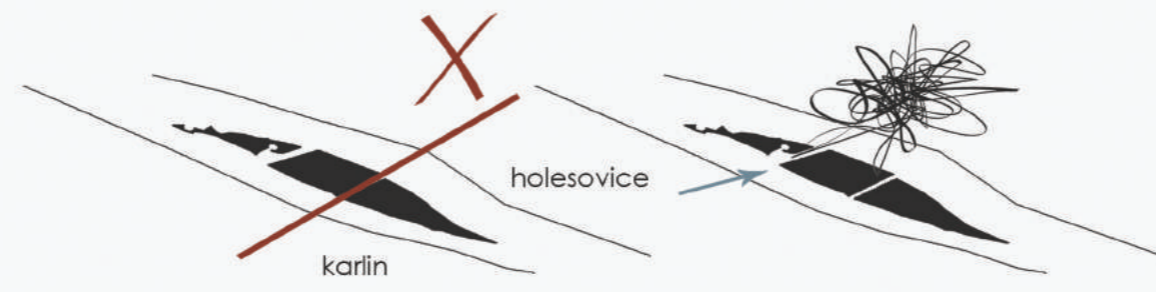
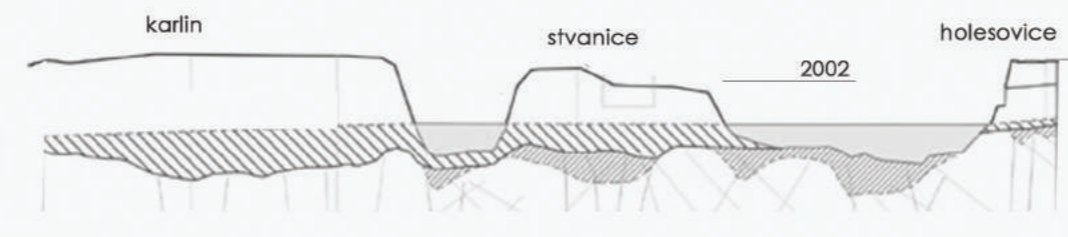
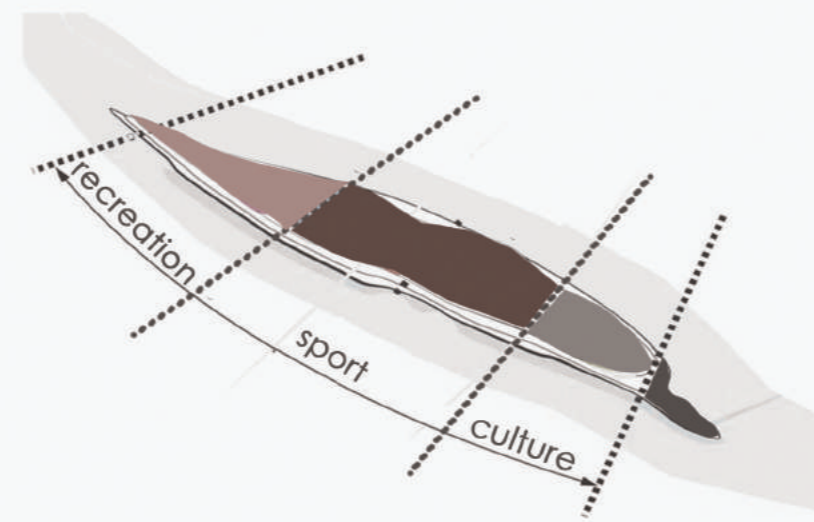
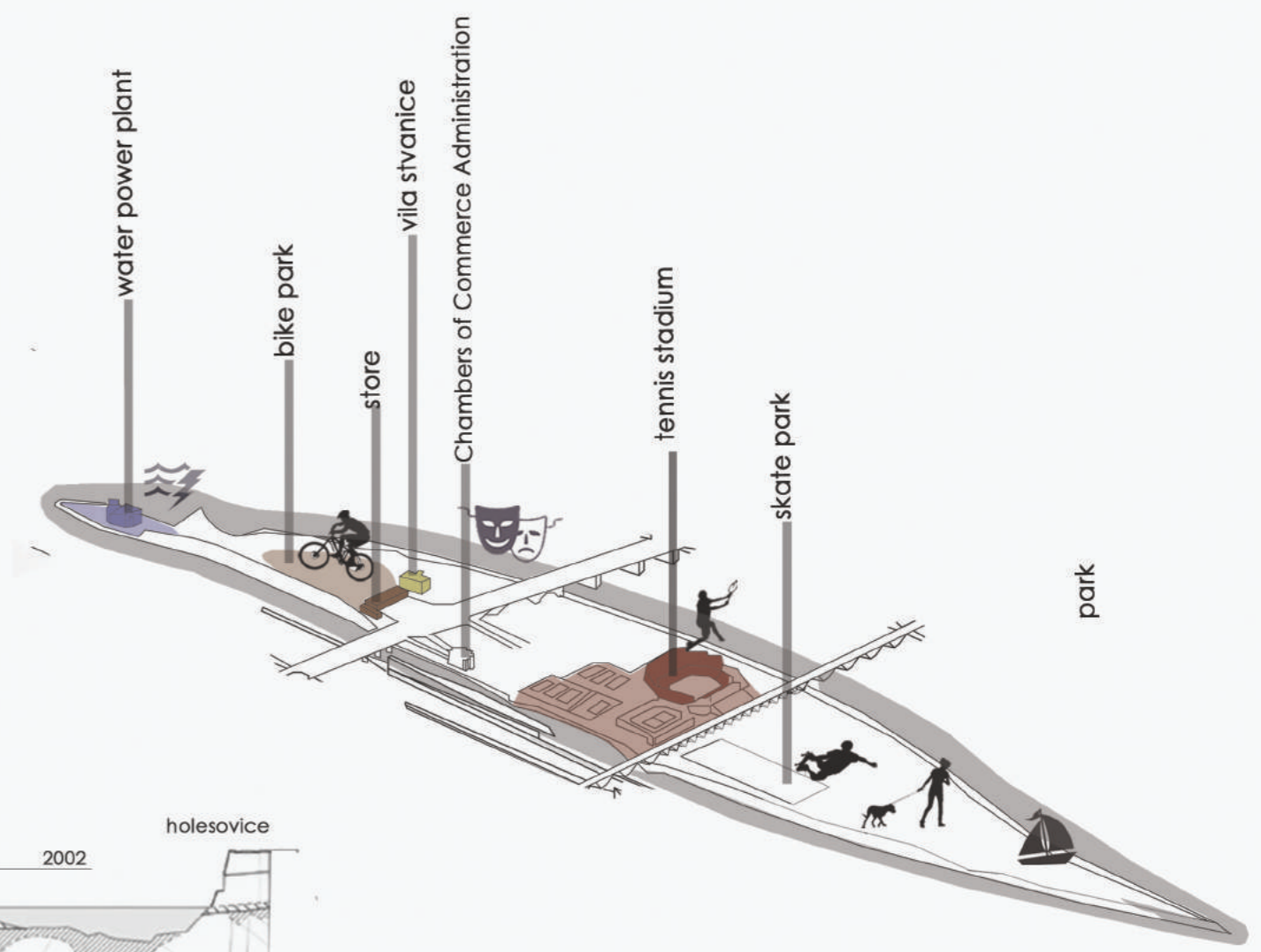


diagram of accessibility to the island



section of floods in 2002

use of land



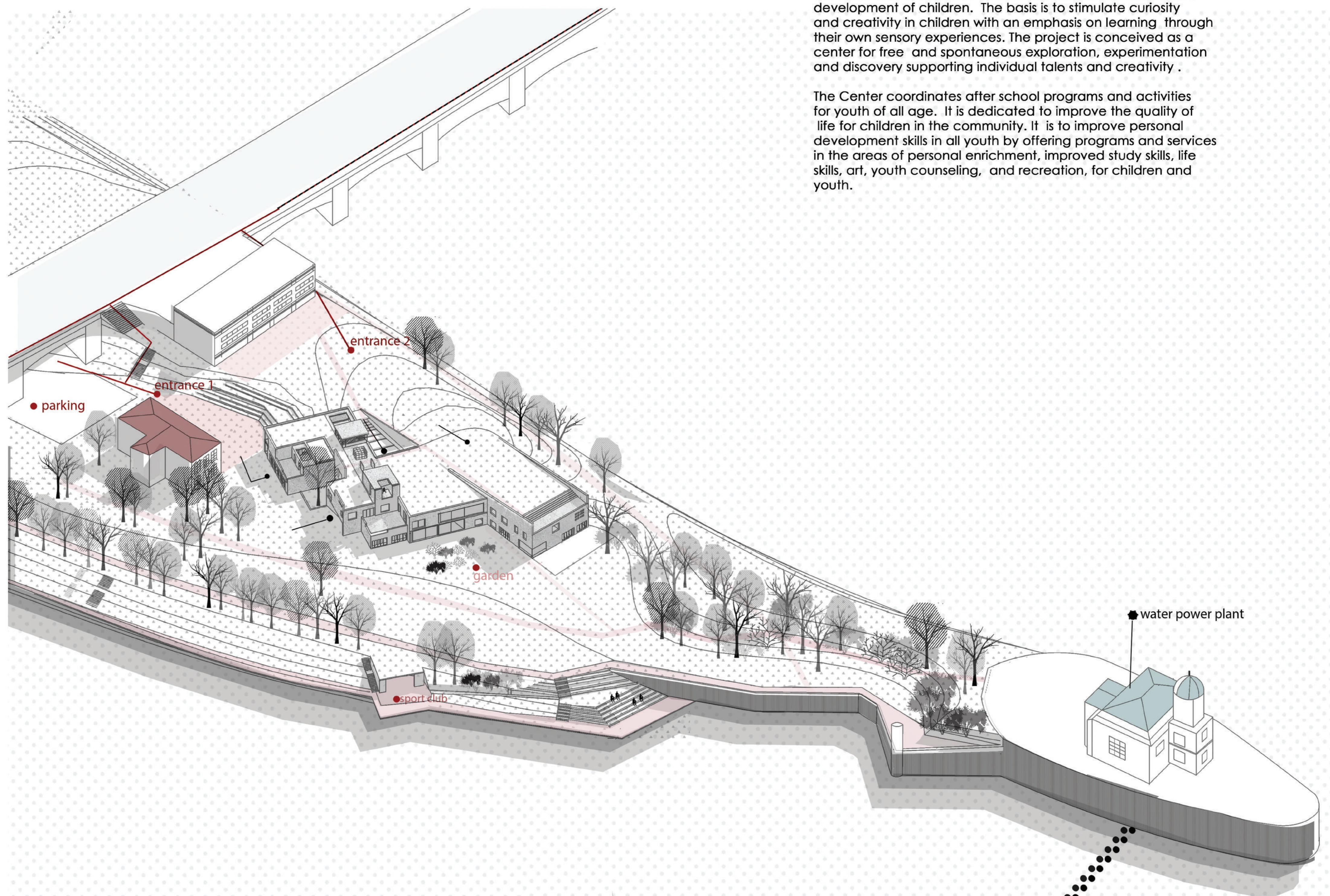
Immersive, experiential and sensory center

Architecture is the art of reconciliation between ourselves and the world, and this mediation takes place through senses.

The master thesis focuses on exploring spaces that strengthens the experiential experience, unique and distinctive aspects of the environment. It evaluate the role of architecture in emphasising and framing the segments of the environment that are identified as sensorial and experiential.

The main aim of the projects is to support natural and sensory development of children. The basis is to stimulate curiosity and creativity in children with an emphasis on learning through their own sensory experiences. The project is conceived as a center for free and spontaneous exploration, experimentation and discovery supporting individual talents and creativity .

The Center coordinates after school programs and activities for youth of all age. It is dedicated to improve the quality of life for children in the community. It is to improve personal development skills in all youth by offering programs and services in the areas of personal enrichment, improved study skills, life skills, art, youth counseling, and recreation, for children and youth.



site axonometric view

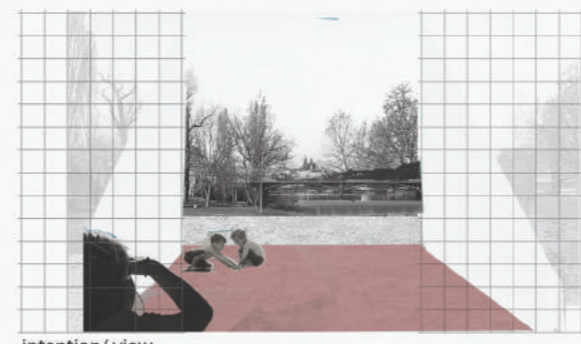
Idea development

The design proposal of the building is primarily focused on 3 established goals.

1/ The emphasis on the characteristic view on Prague castle and waterfall (water power plant) together with Letna park. Through the interior spaces and roof slope the view sequences are inviting people to discover place and intention of creating an oasis united with the island.

2/ Vila Štvanice is a protected cultural monument and place for various cultural activities. The idea is to orientate building in order to create public space that emphasizes the importance of cultural activities and create interaction between two buildings.

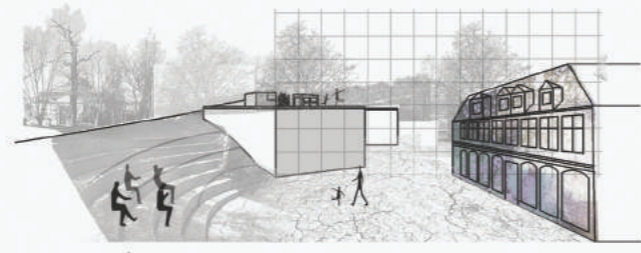
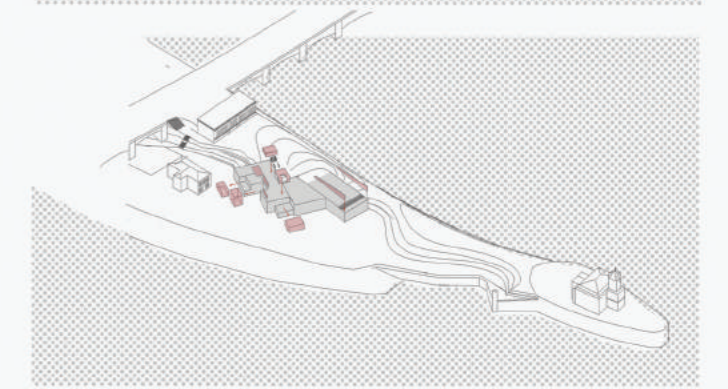
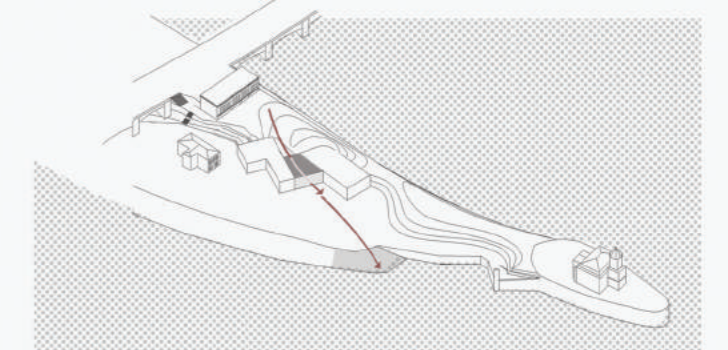
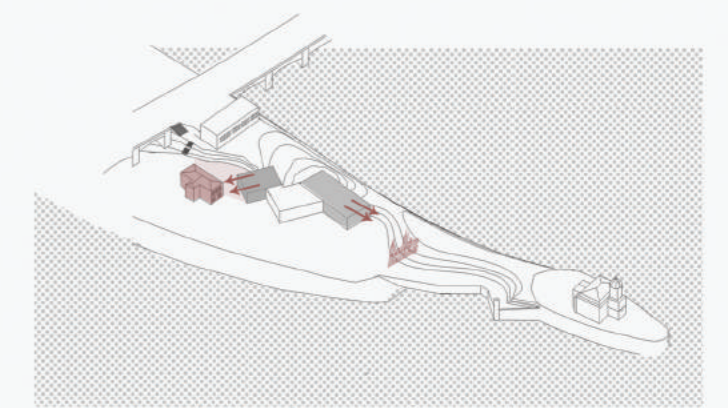
3/ The approach from Hlavkuv bridge to the island is leaving two choices. The intention is to bring people to the water trough building or to lead to the roof.



intention/ view



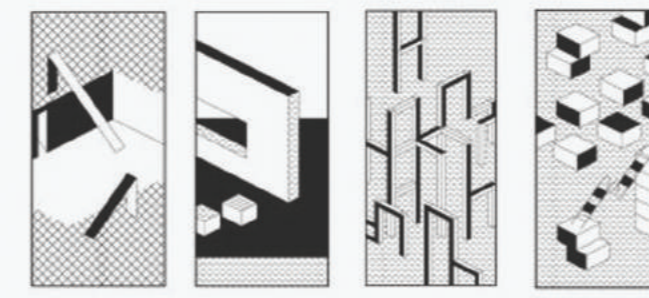
orientations



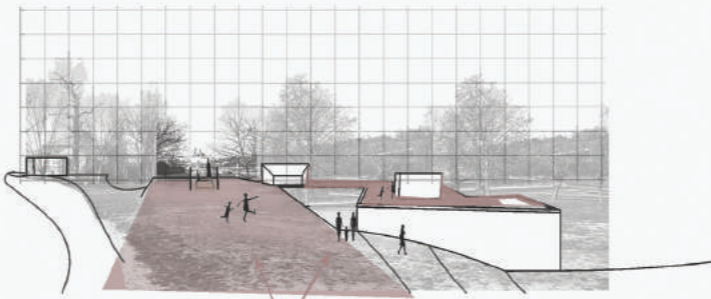
interaction/ vila Štvanice



approach



subtraction and addition



approach

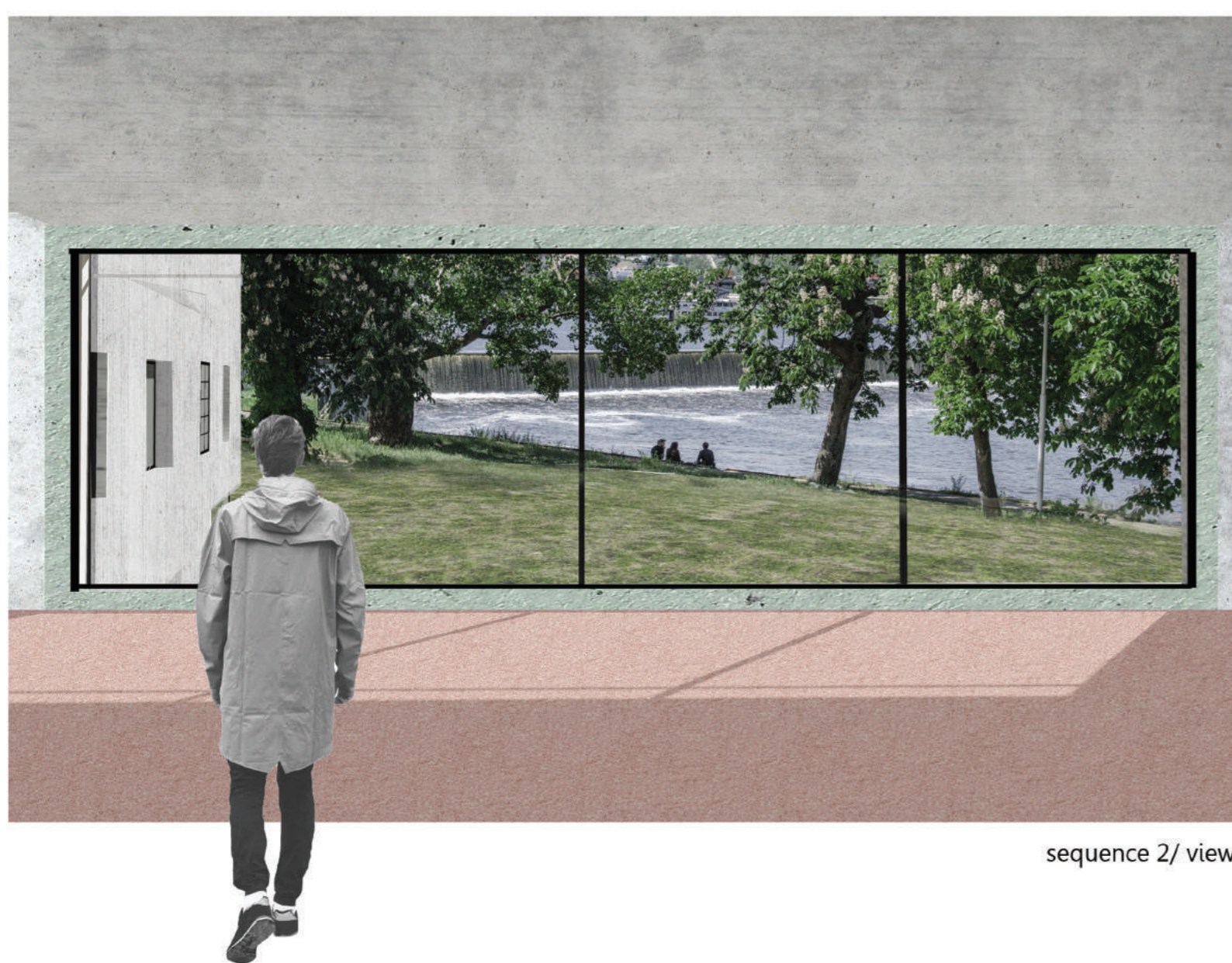


entrance/ sequence 1

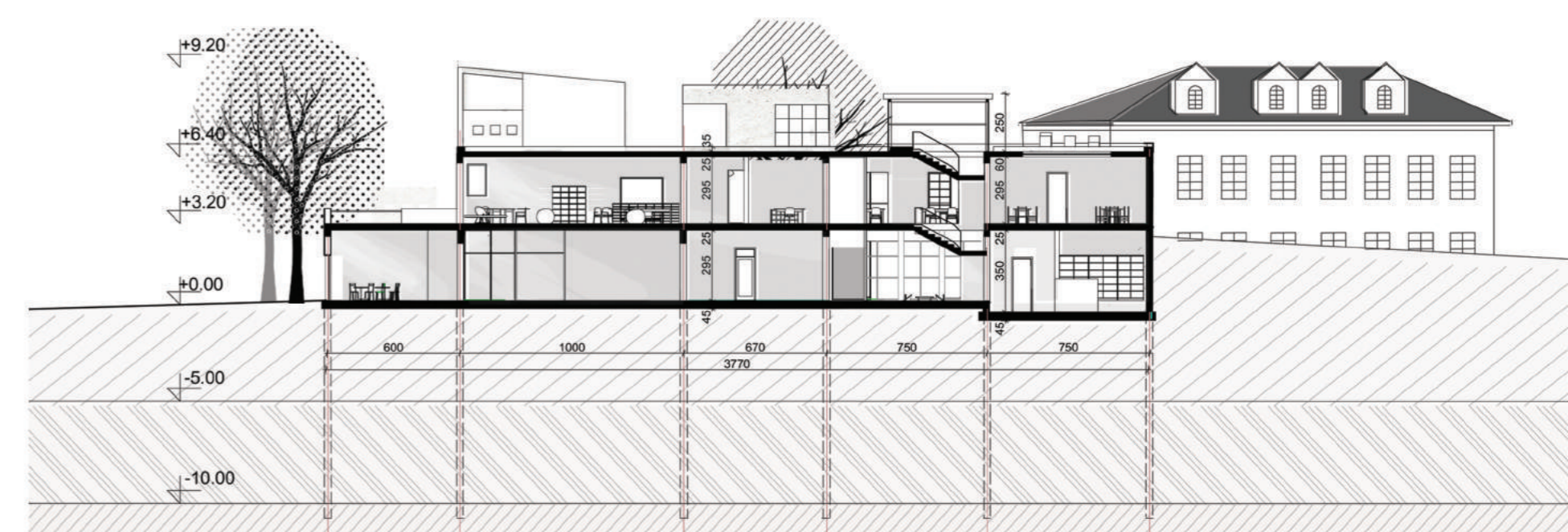


section/ view towards Prague castle

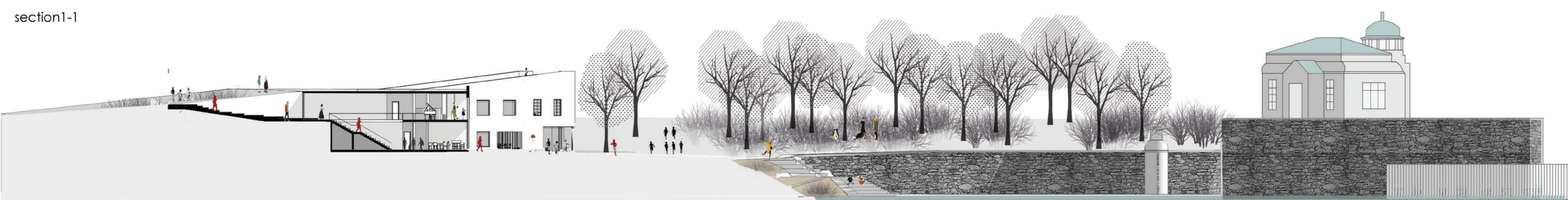
section 3-3



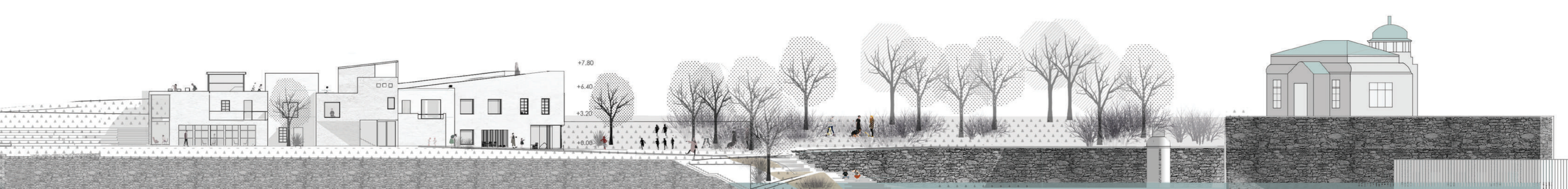
sequence 2/ view

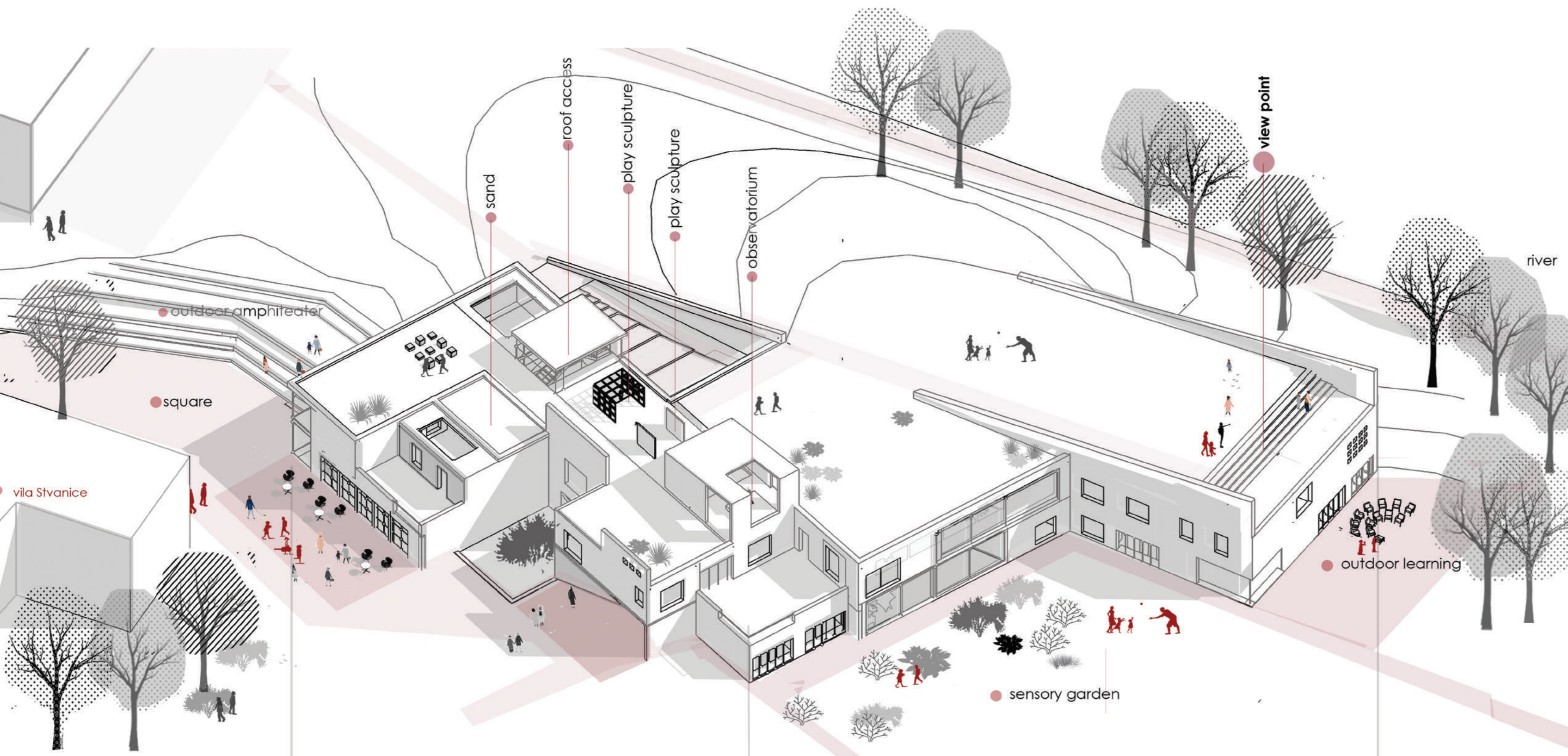


section1-1

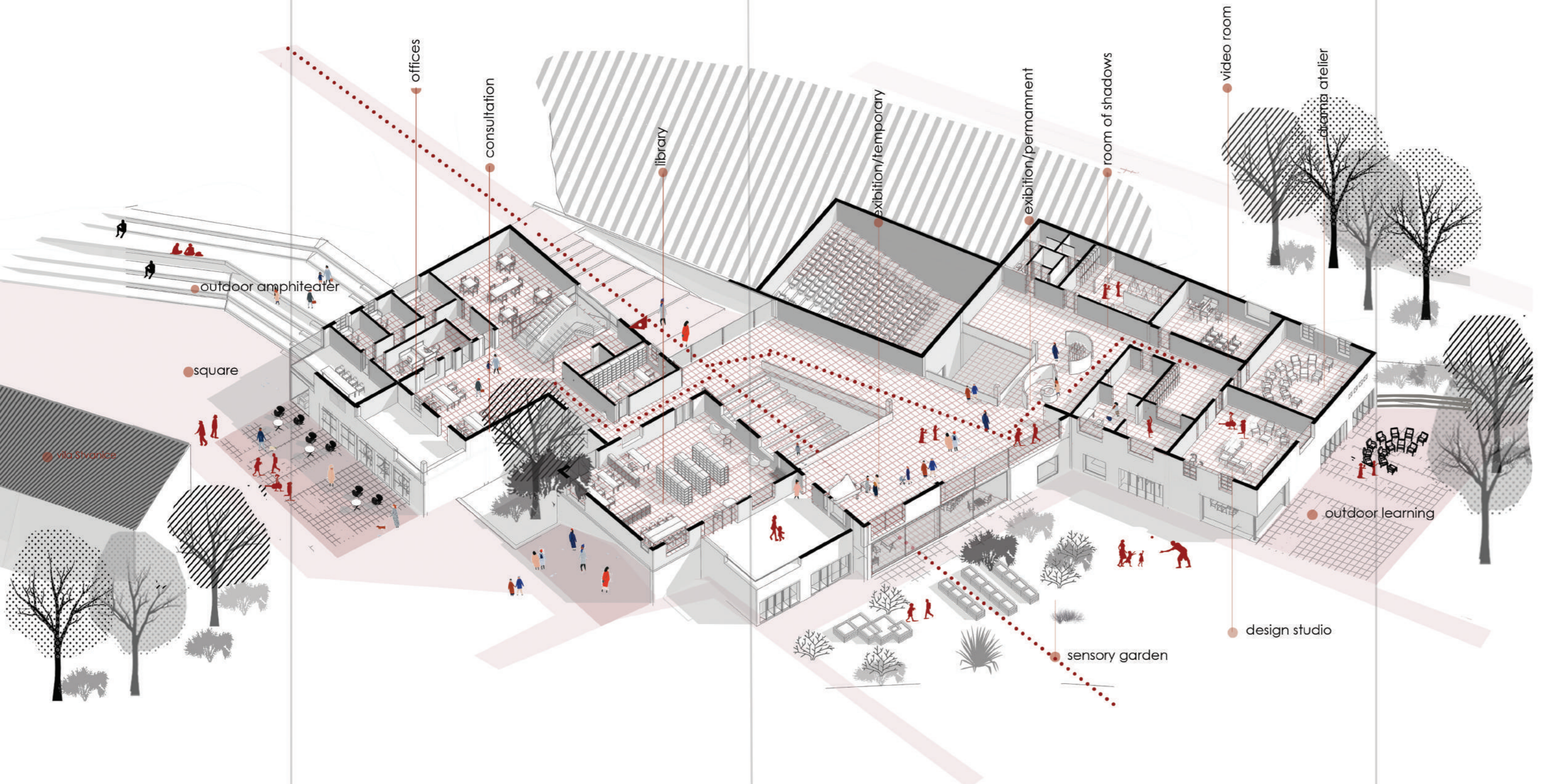


elevation

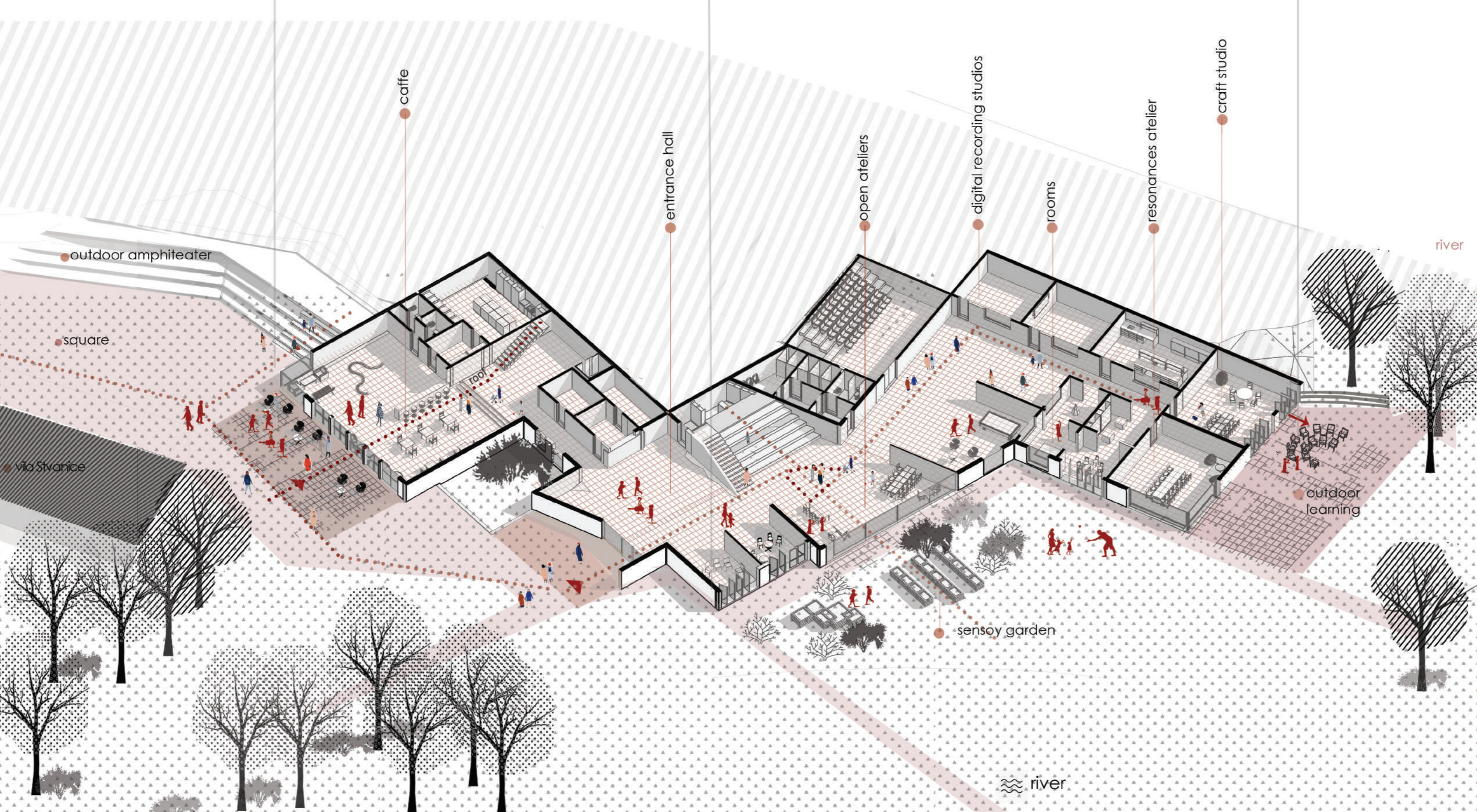




roof/
axonometric view



first floor/
axonometric view



ground floor/
axonometric view



section1-1

