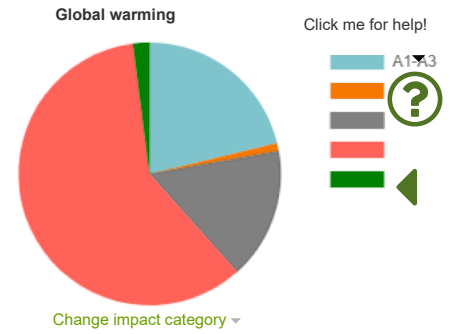




**Result report:** Visionary V2 - Energy mix CR

<b>Entity</b>	Visionary - Visionary V2 - Energy mix CR
<b>User</b>	Anna Silovska - 21.05.2018
<b>Indicator</b>	LCA for BREEAM Int'VES/NOR/SE
<b>Details</b>	This is officially approved LCA in compliance with BREEAM International NC 2013 and <a href="#">More...</a>



Default values are used in calculation: Transportation distances, European. Results were also calculated again.

**Life-cycle assessment results for BREEAM International versions as per EN 15978**

Sector	Global warming kg CO2e	Acidification kg SO2e	Eutrophication kg PO4e	Ozone depletion potential kg CFC11e	Formation of ozone of lower atmosphere kg Ethenee	Non hazardous waste disposed kg
A1-A3 Construction Materials	1,11E7	2,48E4	3,09E3	1,16E-2	2,54E3	2,16E6
A4 Transportation to site	2,28E5	5,29E2	1,12E2	4,02E-2	2,84E1	1,13E3
A5 Construction/installation process	4,89E5	2,61E3	4,37E2	3,88E-2	1,05E2	2,61E4
B4-B5 Material replacement and refurbishment	8,21E6	1,93E4	2,37E3	3,71E-3	2,1E3	1,58E6
B6 Energy use	3,12E7	2,05E5	2,81E4	2,01E0	9,66E3	1,02E6
B7 Water use	1,08E6	5,82E3	2,95E3	1,17E-1	2,62E2	1,5E5
C1-C4 Deconstruction	2,31E5	1,09E3	2,6E2	4,61E-5	1,49E2	8,94E5
D External impacts (not included in totals)	-2,39E5	-7,88E2	-6,12E1	-6,71E-5	-5,14E1	-3,47E4
<b>Total</b>	<b>5,26E7</b>	<b>2,59E5</b>	<b>3,73E4</b>	<b>2,22E0</b>	<b>1,48E4</b>	<b>5,83E6</b>
	<a href="#">Show graph</a>	<a href="#">Show graph</a>	<a href="#">Show graph</a>	<a href="#">Show graph</a>	<a href="#">Show graph</a>	<a href="#">Show graph</a>
<b>Results per denominator</b>						
Gross Internal Floor Area (IPMS/RICS) 24900.0 m2	2,11E3	1,04E1	1,5E0	8,92E-5	5,96E-1	2,34E2

**Methodologically consistent and regionally representative LCA data**

Answer

Local compensation target region

Czech Republic

Compensation to local conditions, if applied by the user, is made according to CEN/TR 15941 and One Click LCA's BRE-approved methodology.

**Results visualisation for Global warming (GWP)**

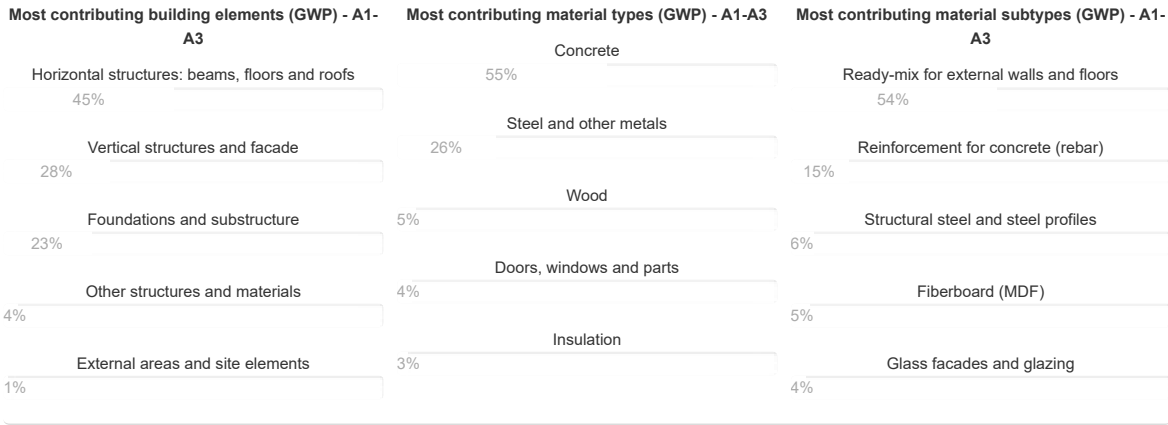
Change impact category ▾

52 592 tons CO<sub>2</sub>e

35 kg CO<sub>2</sub>e / m<sup>2</sup> / year

€ 2 629 596 Social cost of carbon



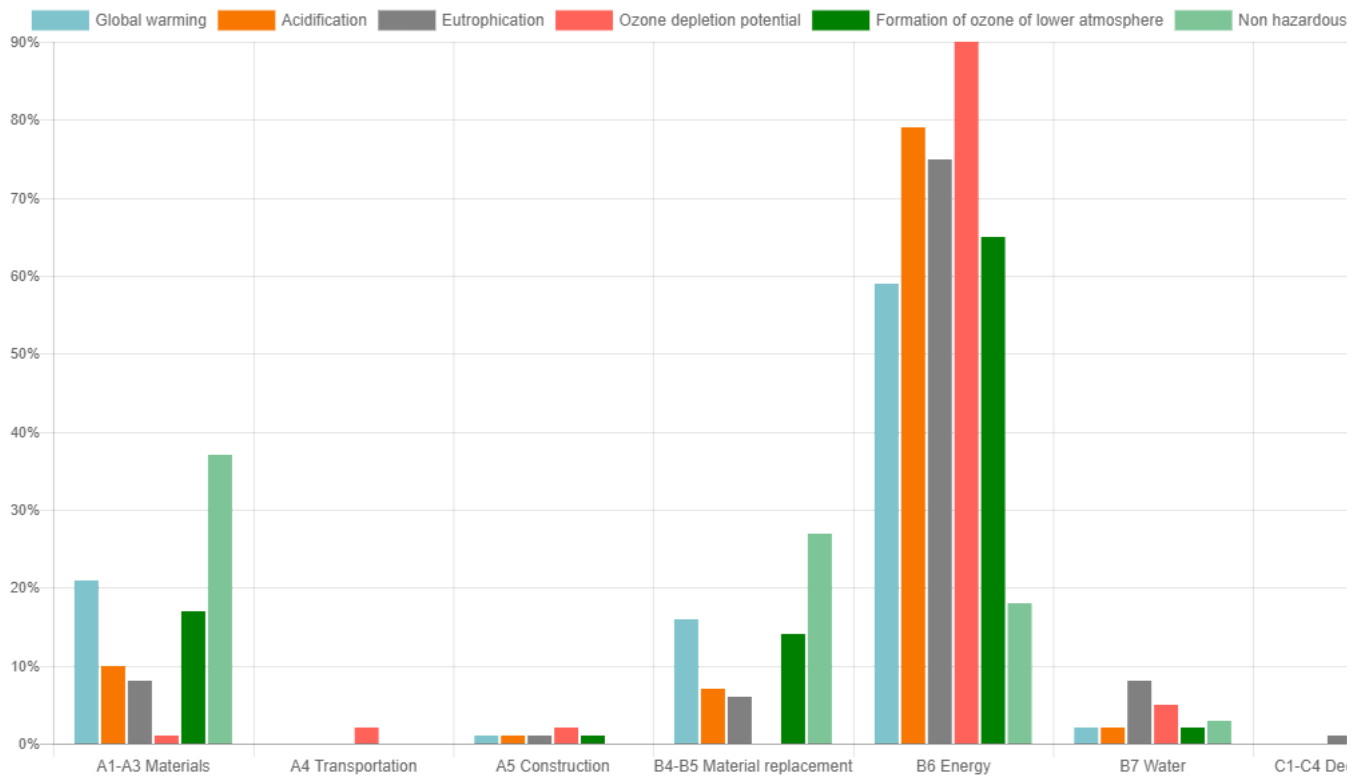


**Most contributing materials (GWP) - A1-A3**

1. Concrete, ready mixed C30/37 - **53.6 %** - show sustainable alternatives
2. Reinforcement steel - **15.3 %** - show sustainable alternatives
3. Steel profile - **6.0 %** - show sustainable alternatives
4. Insulating glass - 2 panes - **3.9 %** - show sustainable alternatives
5. Raised floor system, 148 - 159 mm, 25.95 kg/m2, Type LIGNA (Lindner) - **2.8 %** - show sustainable alternatives
6. Frame profile, aluminium, thermally separated, powder-coated - **2.0 %** - show sustainable alternatives
7. Medium density fibreboard (MDF), coated, 2 - 50 x 590 - 2850 x 1025 - 6250 mm, 734 kg/m3 (Sonae Indústria) - **1.8 %** - show sustainable alternatives
8. Tile cement - **1.4 %** - show sustainable alternatives
9. Elastomer joint sealer tape, silicon rubber - **1.3 %** - show sustainable alternatives
10. Hot-dip galvanised steel sheet - **1.3 %** - show sustainable alternatives

**Results distribution by life-cycle stage**

Click on a category legend to hide/unhide [Download](#)



**Global warming (GWP), grouped by Mat 01 element breakdown**

Click on a category legend to hide/unhide [Download as image](#)

Datasets contain unclassified data (5)



