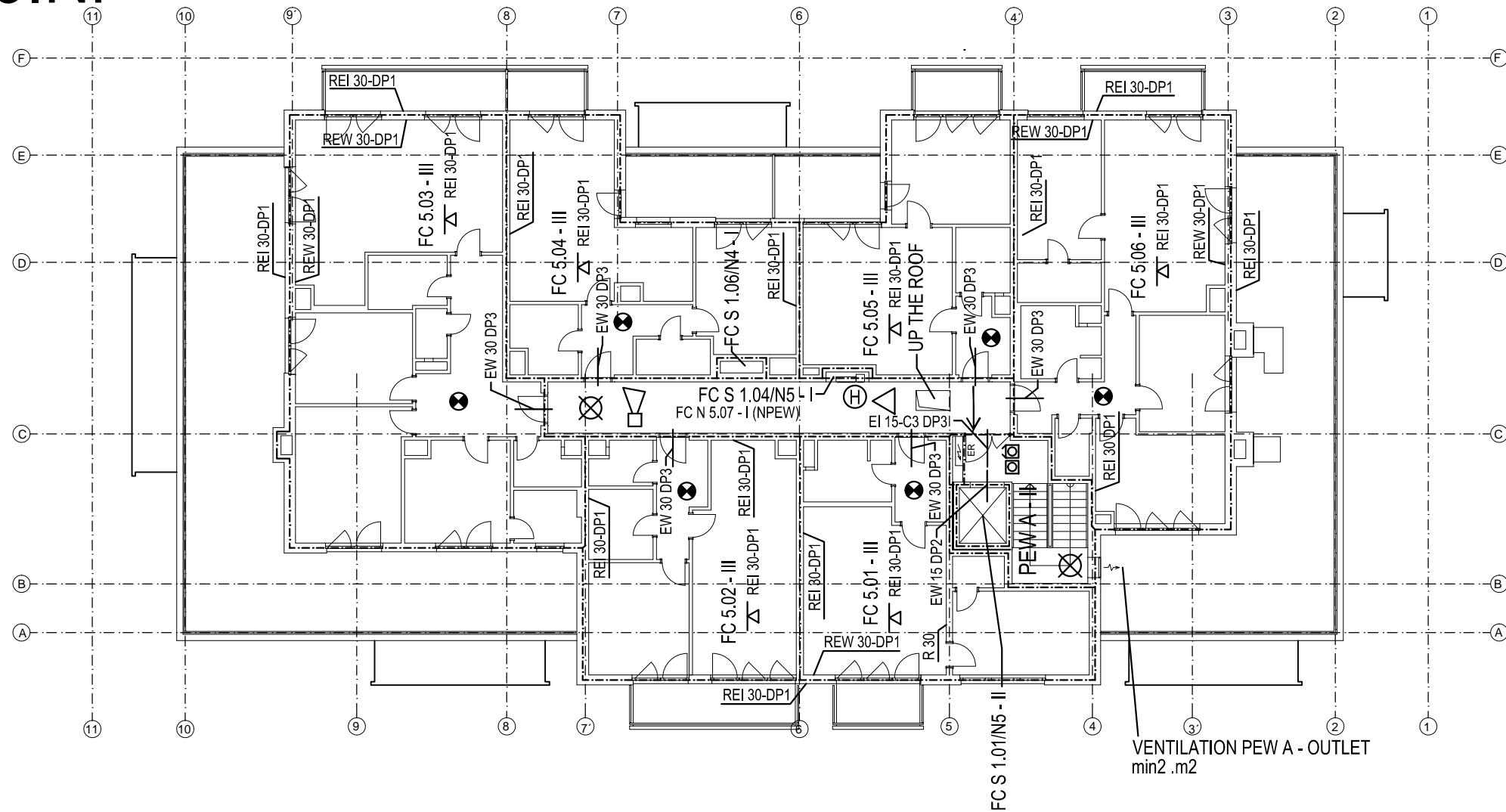


5.NP




FIRE HEIGHT OF BUILDING: 12,0 m

±0,000 = +262,450 BpV

LEGEND

-----	Fire compartments border	⊙	Smoke protector
PEW A	Protected escape routes	△	Fire extinguisher
→	Escape direction	Ⓜ	Hydrant system
➔	Main escape point	△ REI 15-180 DP1-3	Ceiling fire resistance
⊠	Fire alarm button	EFS	Electric fire signaling
⊠	Fire ventilation button	📣	Siren
⊗	Emergency lighting		

OBJECT		Czech Technical University 	
RESIDENTIAL BUILDING			
PURPOSE	BACHELOR THESIS - RESIDENTIAL BUILDING		
CONSULTED WITH	Ing. Petr Hejtmanek, Ph.D.	date	05 / 2018
CREATED BY	Malathe Alkhateeb	scale	1 : 200
PART	FIRE DESIGN	Nr A4	
DRAWING	Fire design 5NP		Drawing nr. 4.