

# IBEROAMERICAN CENTER Holešovice - Prague

Master's Thesis Project

SEMESTER Summer 2018  
AUTHOR Sujana Villafaña Bohac  
STUDIO Dok. Acad. Arch. Vladimír Soukenka



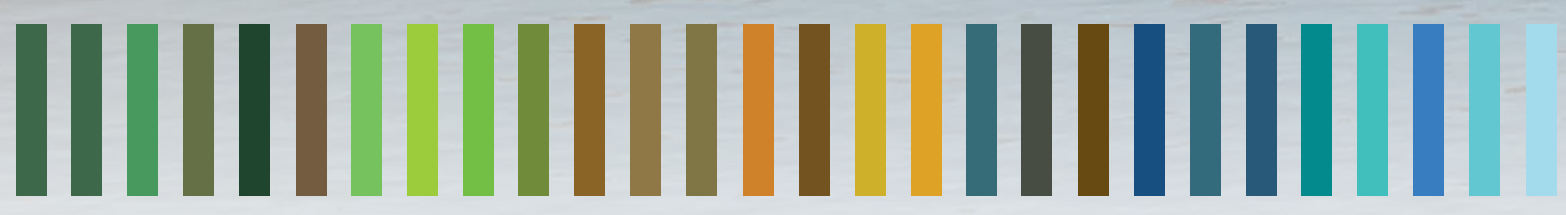
## a. Context

Prague - Central Europe  
OUTER LANGUAGE



Iberoamerica  
INNER LANGUAGE

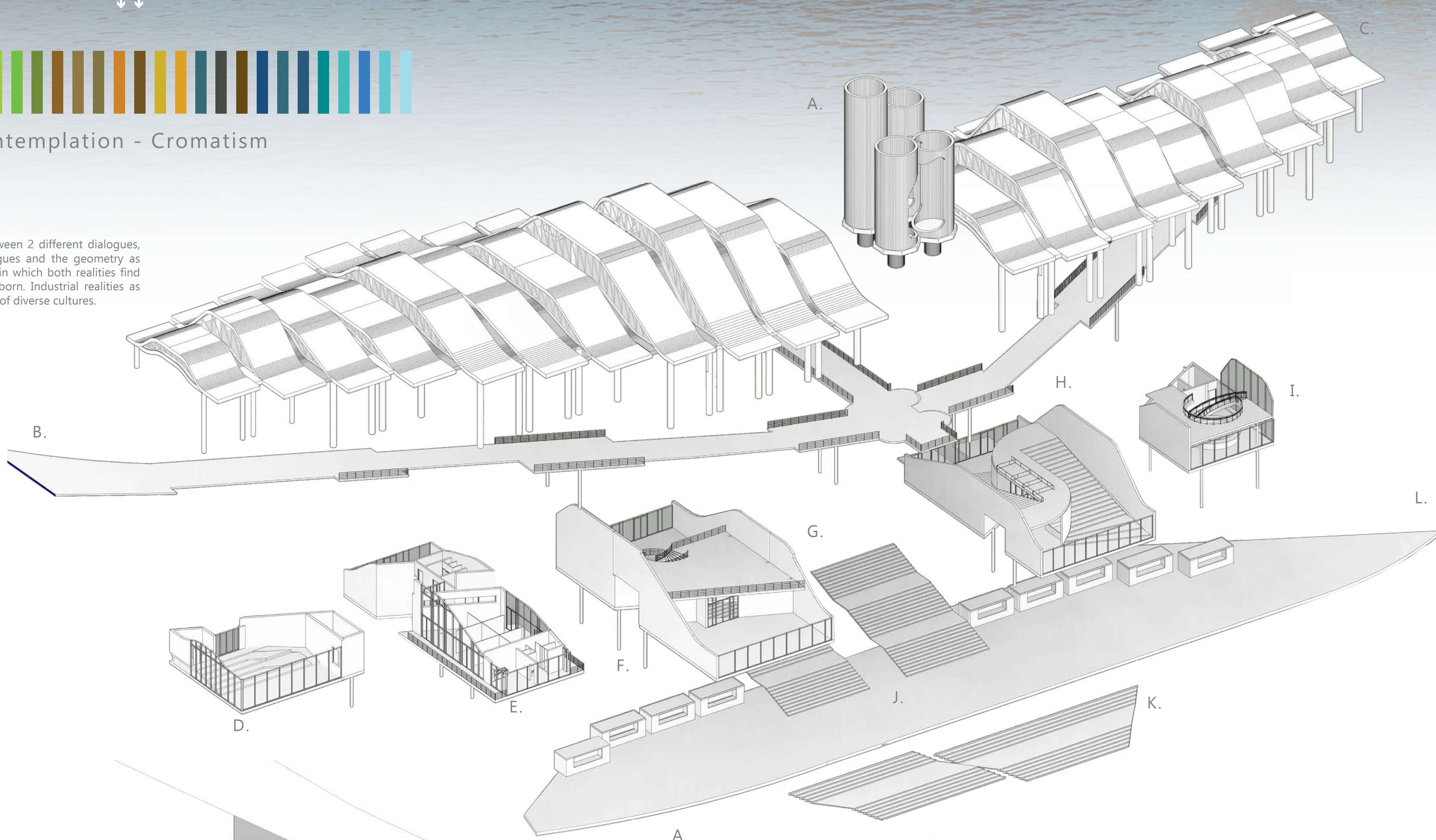
## b. Mood



Industrial Contemplation - Cromatism

## c. Medium

Water as the medium of interrelations between 2 different dialogues, understanding culture as continuous dialogues and the geometry as words to deconstruct it. Water is the element in which both realities find a common space for diffuse, merge and return. Industrial realities as possibilities for re-reading new perspectives of diverse cultures.



## Elements of the Iberoamerican Center

- A. Existing Silo
- B. Spine - The spine of the project
- C. Roof - Shell - Gradation of industrial patterns
- D. Flexible Space - Contemporary theatre
- E. Artist's Atelier - Reception
- F. Art Gallery
- G. Stairs - Connection to the river
- H. Flexible Space - Library - Coworking
- I. Tapas Bar
- J. La Plaza - Fiesta time - Naplavka
- K. Steps to the water
- L. Sculpture park

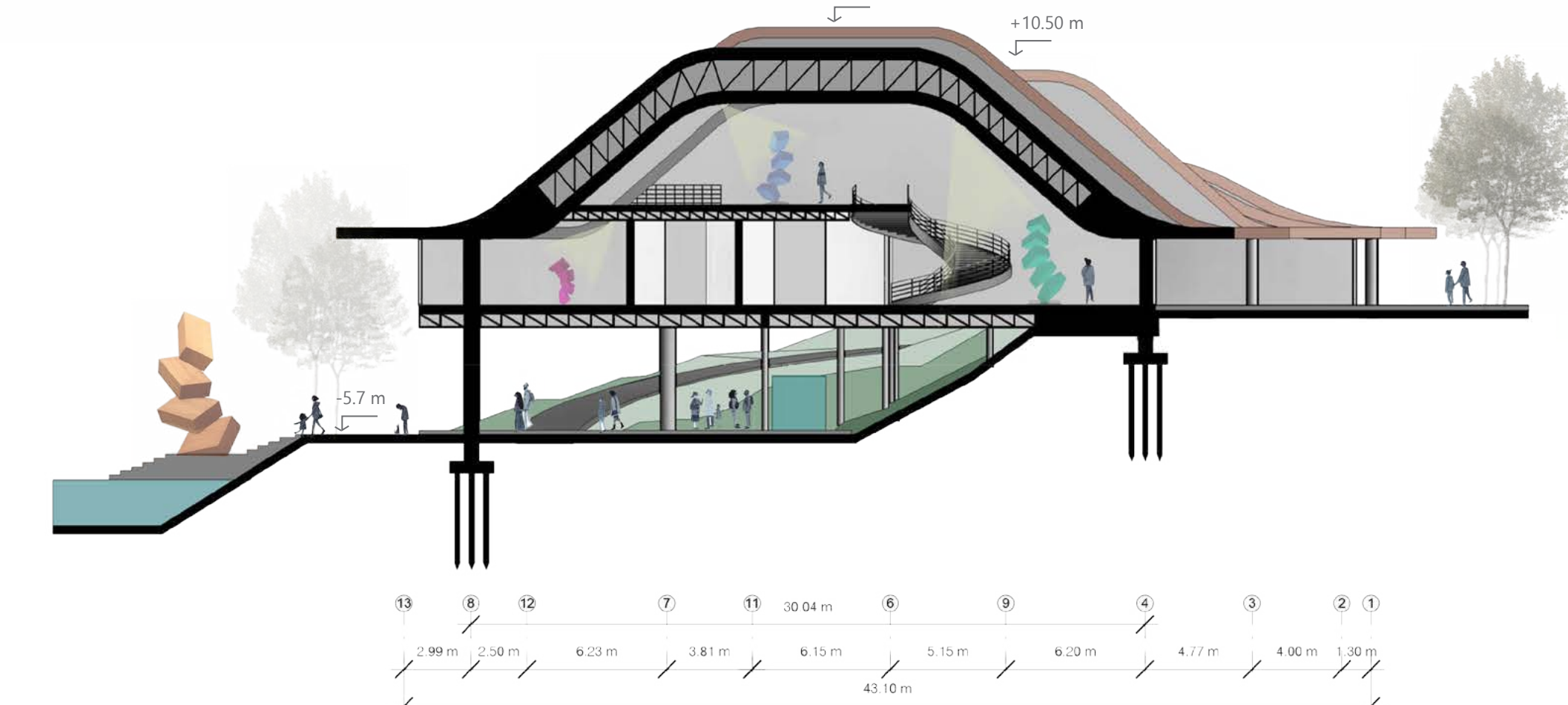
## Internal distribution

1/200

- 1. The Spine - Main access
- 2. Flexible Space - Contemporary theatre
- 3. Secondary access to the building
- 4. Access to artists building
- 5. WC women
- 6. Reception - Hall - Cash desk
- 7. Archive
- 8. WC man
- 9. Storage
- 10. Ateliers for artists
- 11. Kitchen - dining room
- 12. WC + Showers
- 13. Art Gallery - Hall B
- 14. Art Gallery - Hall A
- 15. Silo - Stairs to enjoy the view
- 16. Silo - Artificial Light performance
- 17. Silo - Art installation
- 18. Silo - Natural Light performance
- 19. Access through the boulevard
- 20. Access to the library - coworking area
- 21. Access through the cafeteria
- 22. Tapas Bar
- 23. Auxiliary Kitchen
- 24. Storage

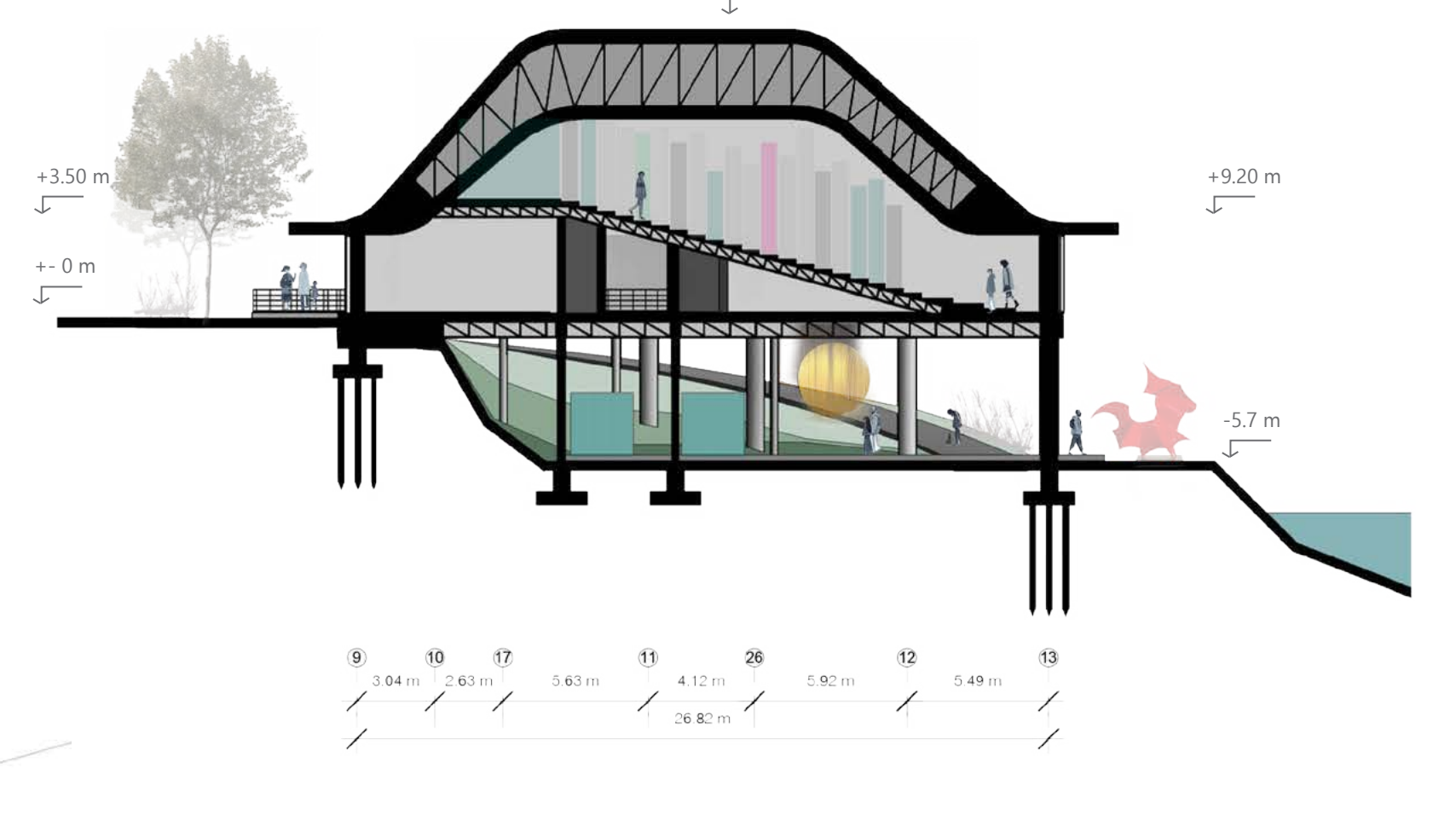
## Art Gallery

AA'  
1/250



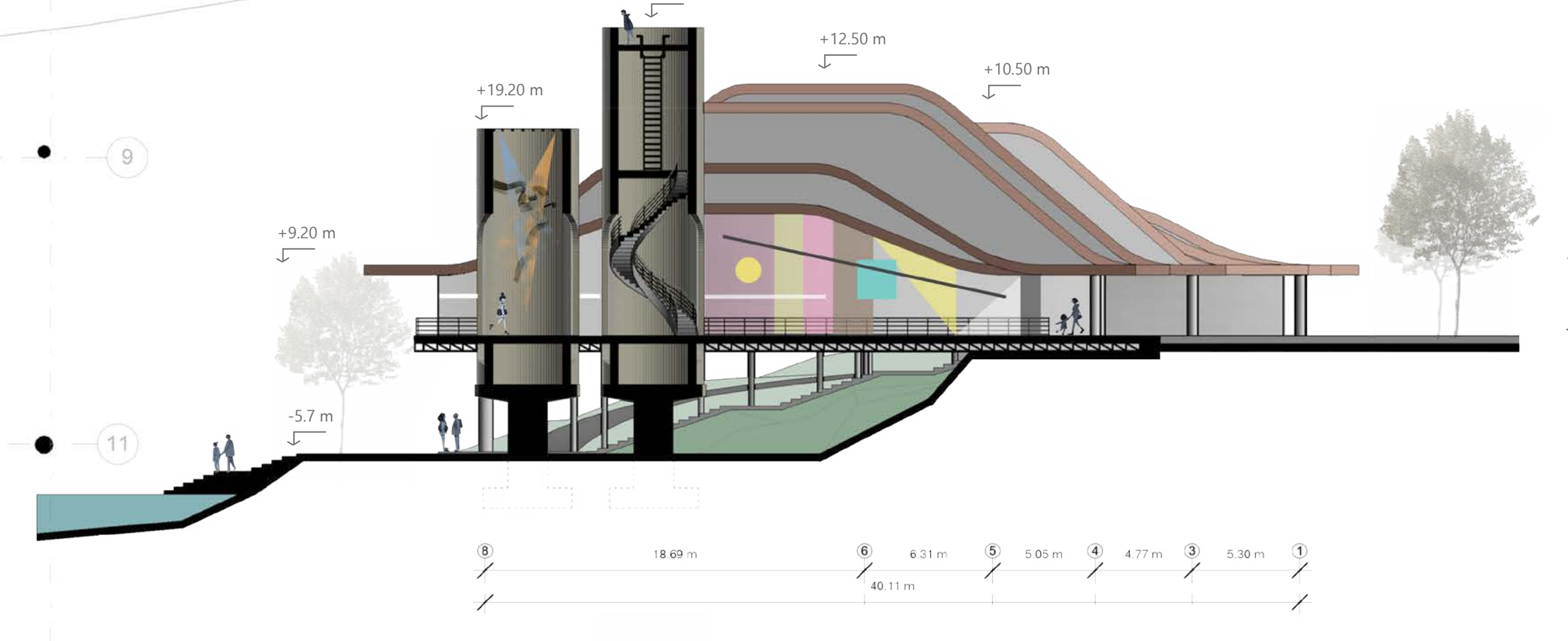
## Library - Coworking

BB'  
1/250



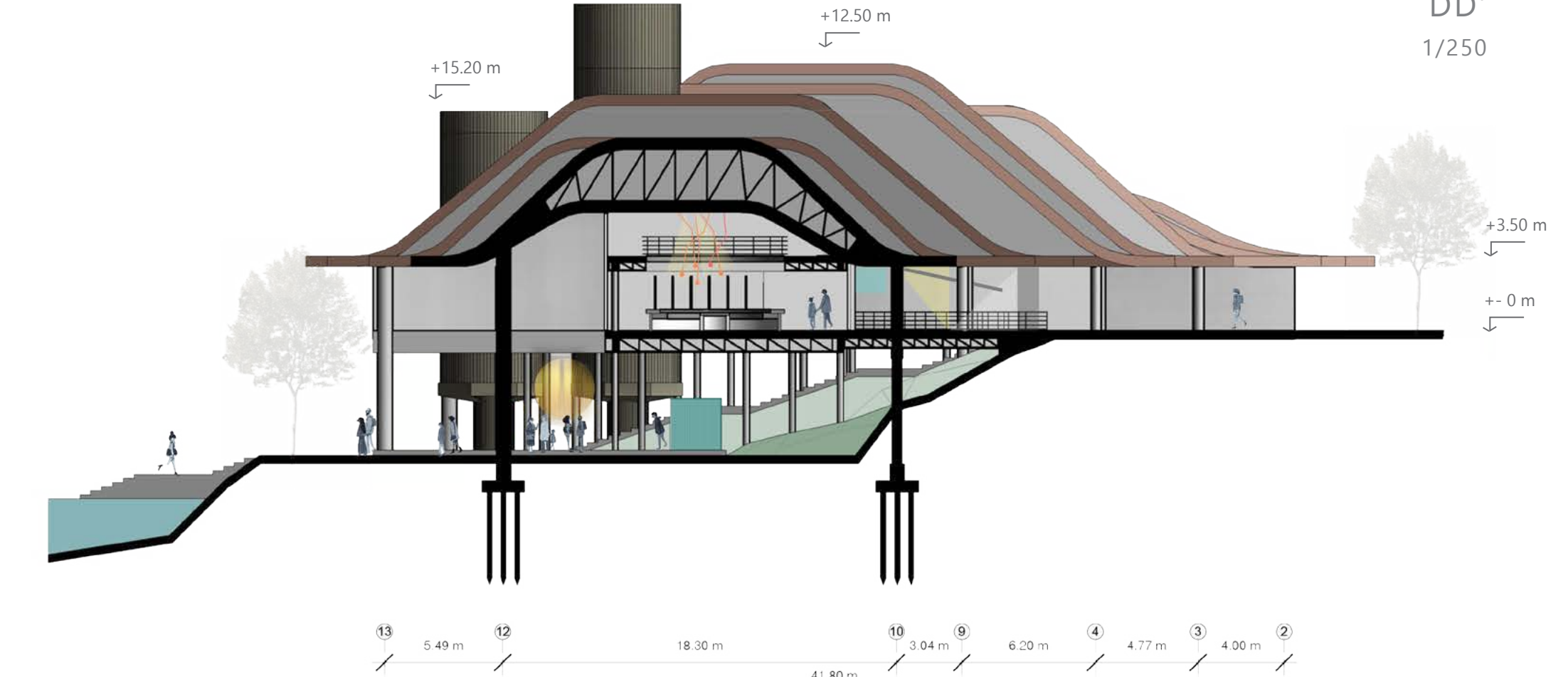
## Silo Performance

CC'  
1/250

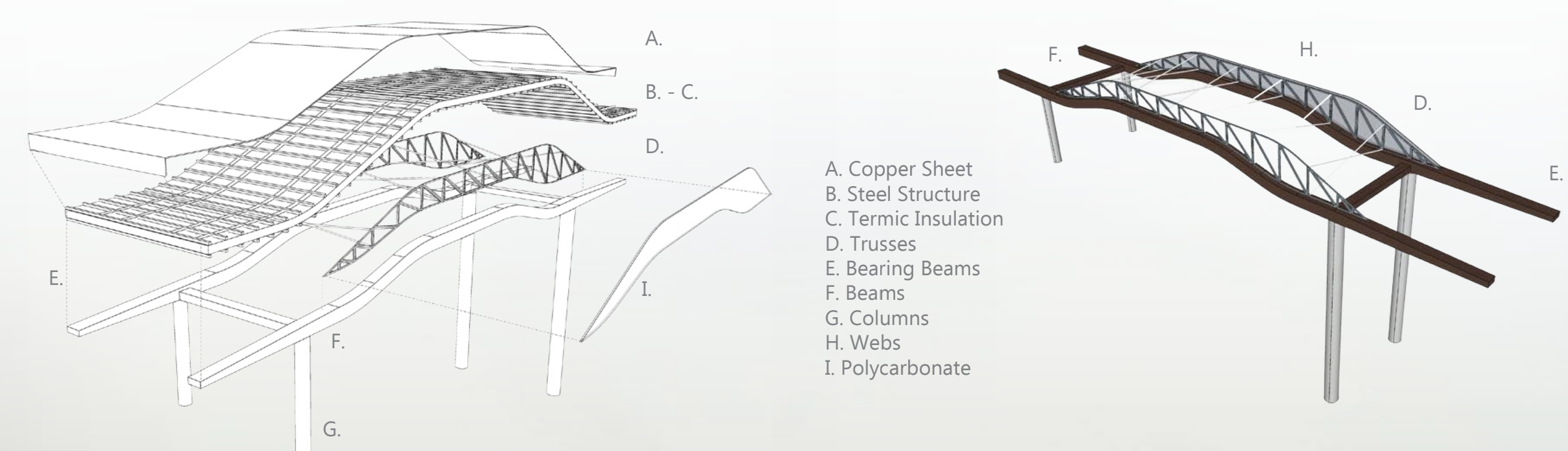


## Tapas Bar

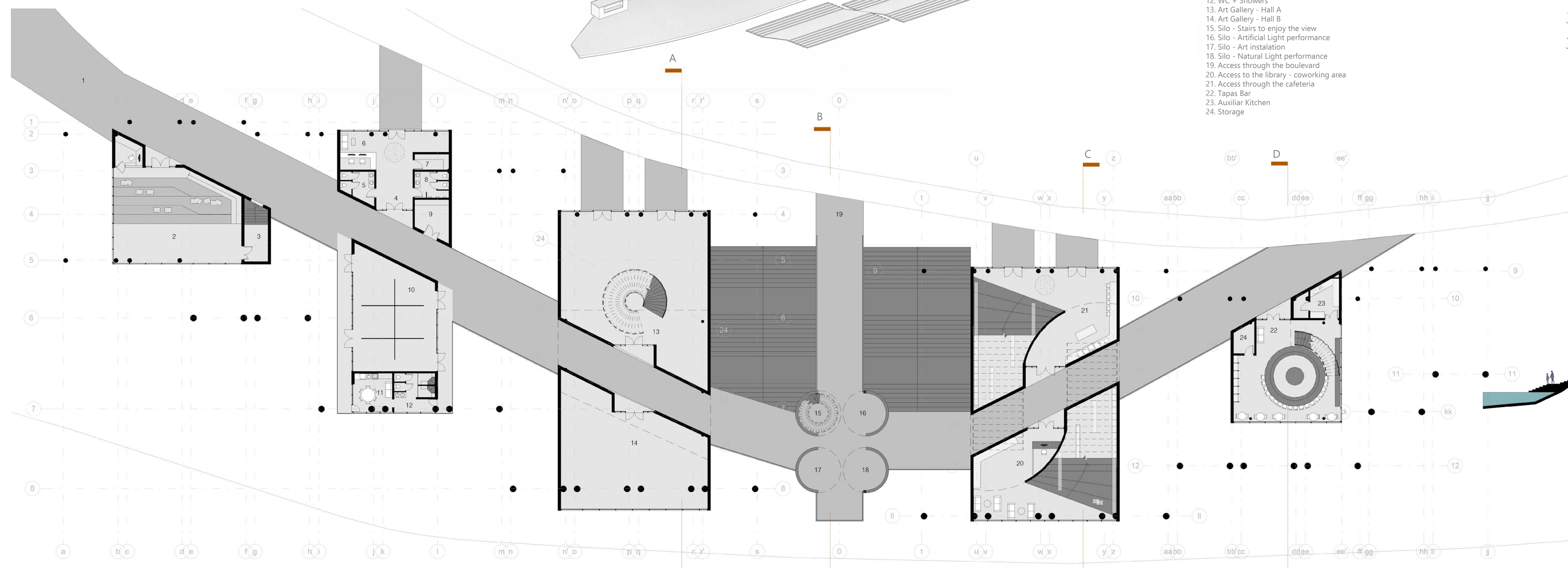
DD'  
1/250



## Axonometric Roof Detail



- A. Copper Sheet
- B. Steel Structure
- C. Thermal Insulation
- D. Trusses
- E. Bearing Beams
- F. Beams
- G. Columns
- H. Walls
- I. Polycarbonate



## North Facade

1/250



## South Facade

1/250

