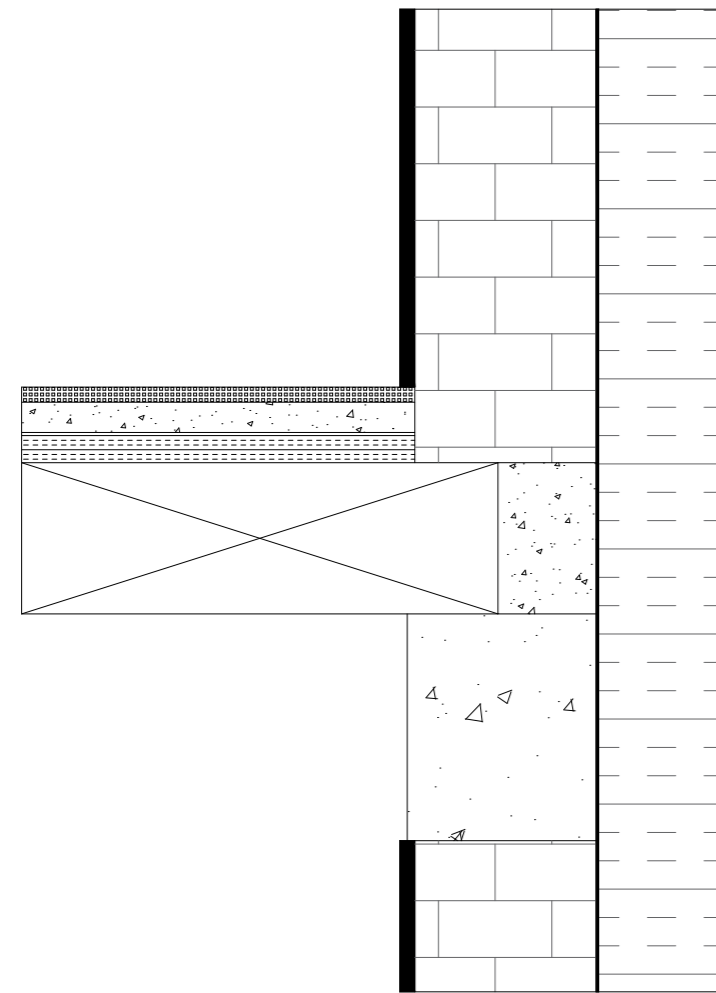

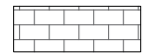






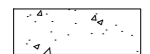
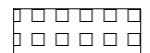


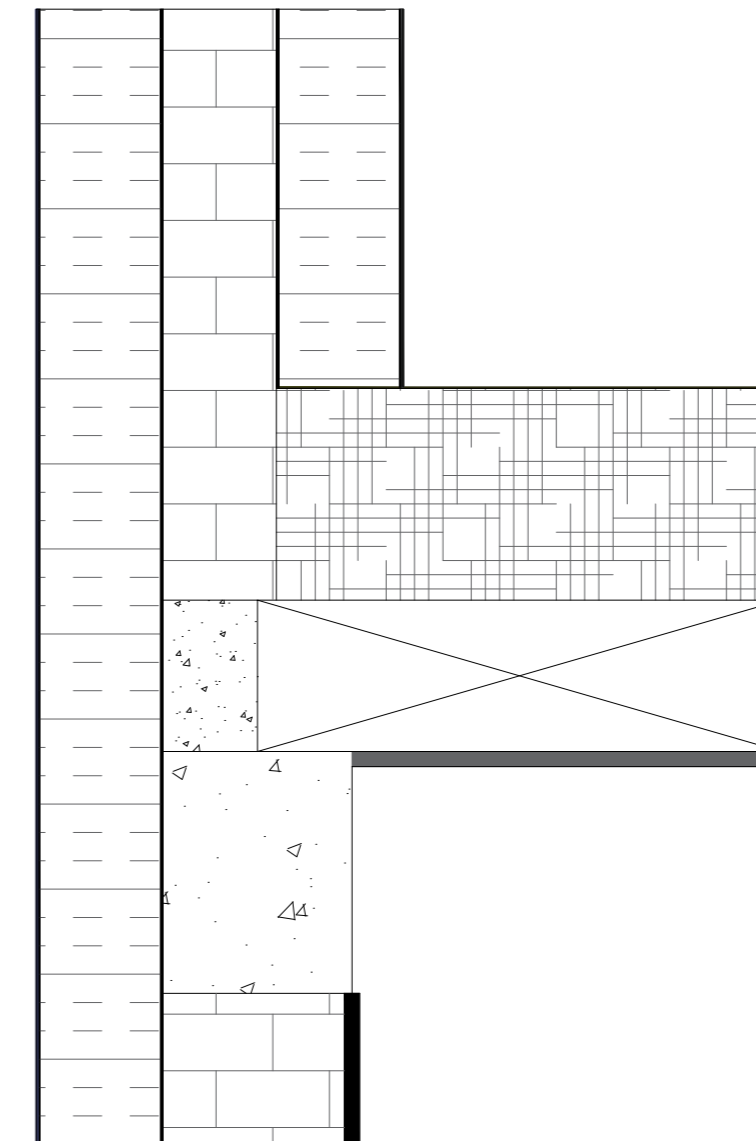
# Detail D-1








Wall Insulation		Thickness (mm)
	Baunit termo plaster (ThermoPutz)	20
	Lime-sand bricks 3 DF	240
	Baunit mortar-glue (Baunit klebeSpachtel)	3
	Rockwool speed rock	160
	Baunit mortar-glue (HaftMortel)	3
	Baunit u lechtilá omítka speciál / extra (EdelPutz)	2

Slab - 1		Thickness (mm)
	Pre-stressed Concrete panel	200
	Acoustic Insulation	40
	Concrete layer	40
	Tiles	20

# Detail D-2



Roof Insulation		Thickness (mm)
	Baunit termo plaster (ThermoPutz)	20
	Reinforced concrete panel	200
	Sarnavap 1000	0.2
	Rockwool Dachrock Max	280
	Sarnafil S15	1.5

NAME	UDHAM SINGH
UNIVERSITY	CZECH TECHNICAL UNIVERSITY
TITLE	Detail 1
SCALE	1:10