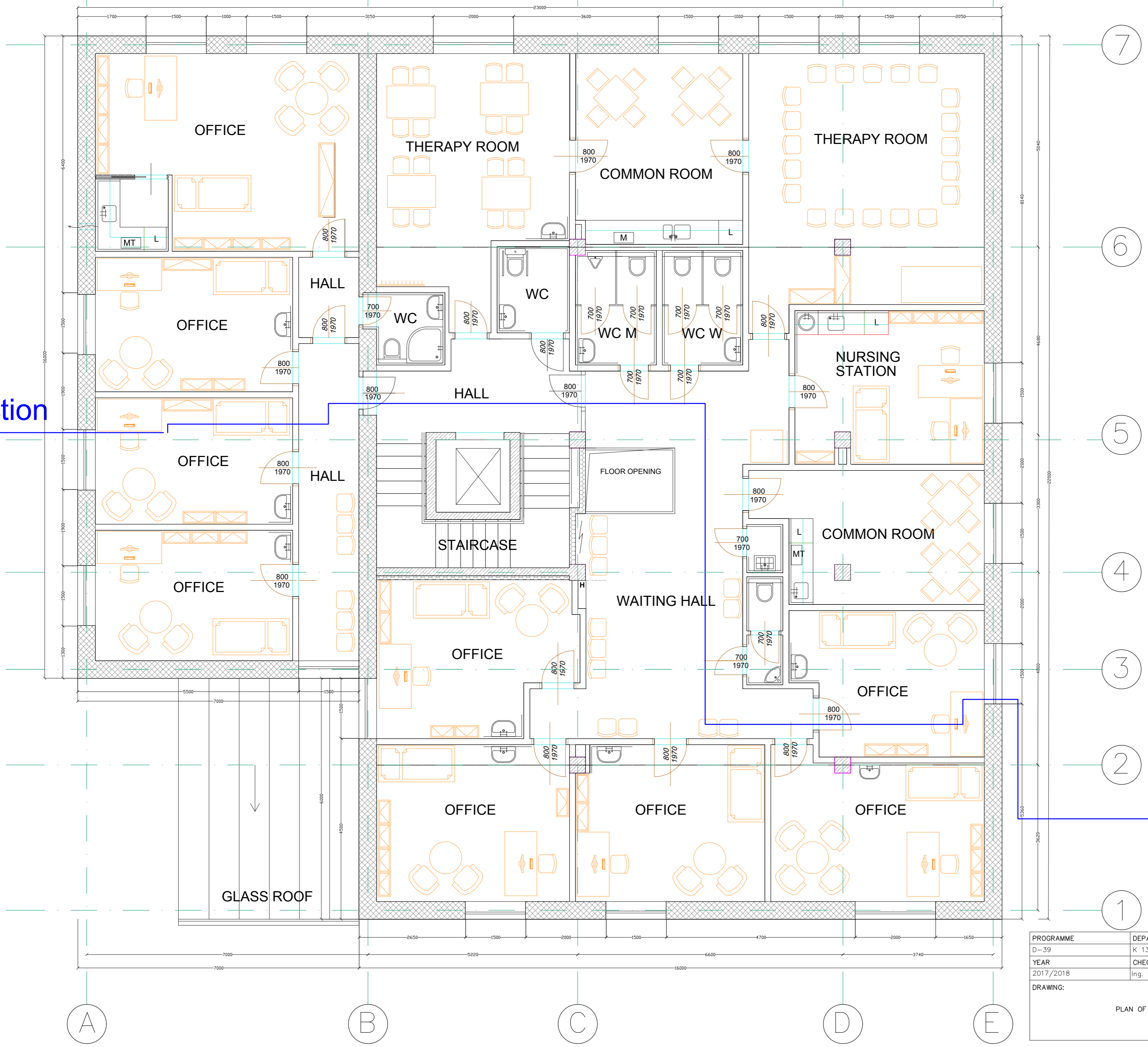


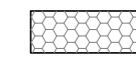
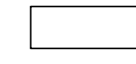


section

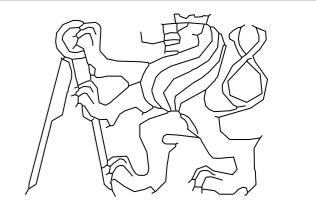
section



**MATERIALS:**

-  PERFORATED BURNT MASONRY HELUZ
-  REINFORCED CONCRETE
-  GYPSUM PARTITIONS
-  YTONG PARTITIONS

PROGRAMME	DEPARTMENT	NAME
D-39	K 133	Sabina Adámková
YEAR	CHECKED BY	
2017/2018	Ing. Iva Broukalová, Ph.D.	
DRAWING:		
PLAN OF A TYPICAL FLOOR		

			
		FORMATE	A2
		SCALE	1:60
DATE	10.1.2018		