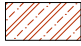
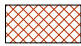


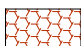


# Ground Floor

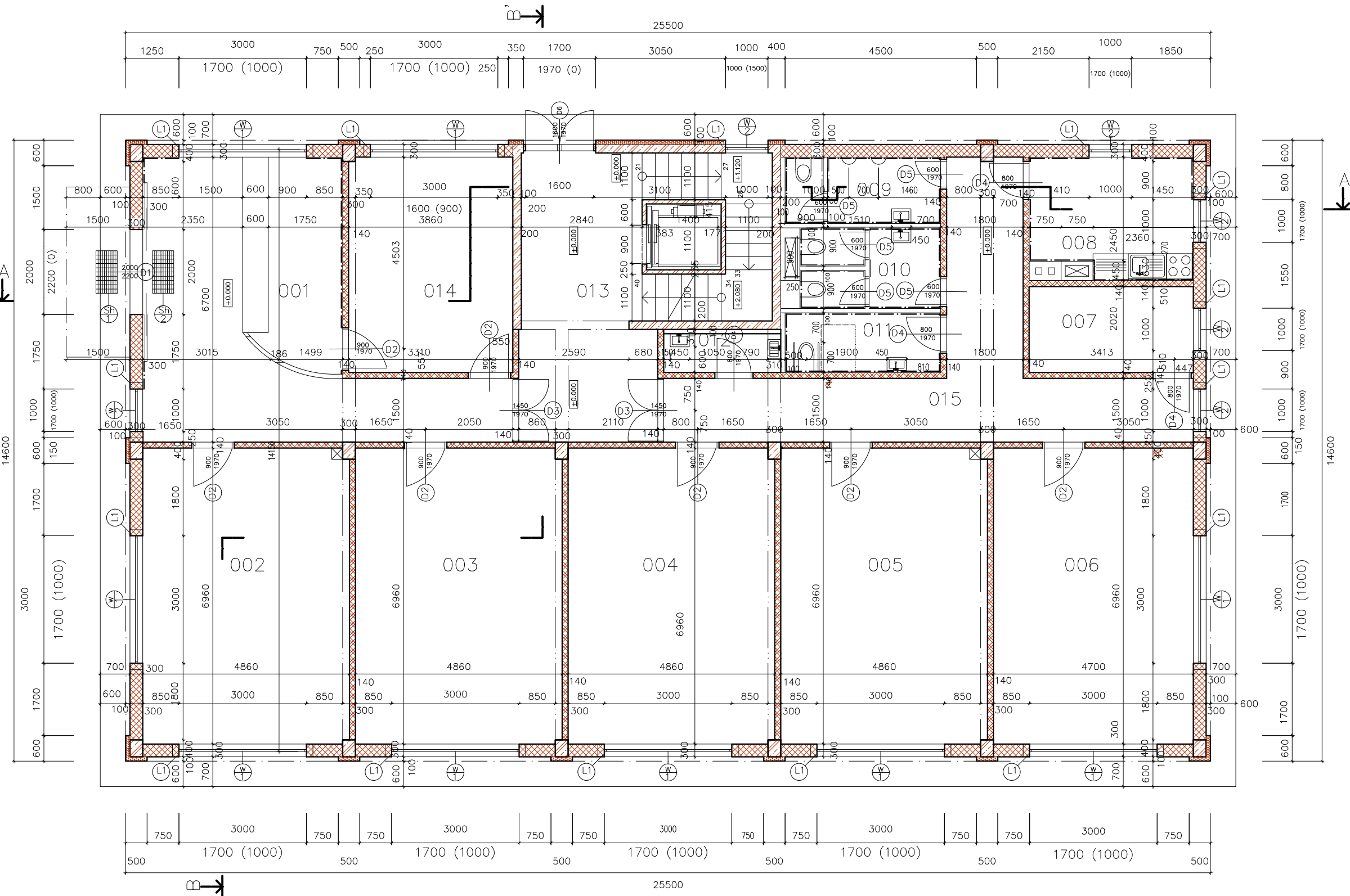
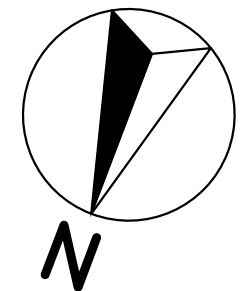
## Legend of the Floor:


Number	Description of the room	Area	Floor Surface	Wall Surface
001	Entrance and Reception	-	Ceramic	Ceramic
002	Office	33.8 m <sup>2</sup>	Carpet	Plaster
003	Office	33.8 m <sup>2</sup>	Carpet	Plaster
004	Office	33.8 m <sup>2</sup>	Carpet	Plaster
005	Office	33.8 m <sup>2</sup>	Carpet	Plaster
006	Office	32.7 m <sup>2</sup>	Carpet	Plaster
007	Storage/Archive	7.8 m <sup>2</sup>	Fine concrete	Plaster
008	Kitchen	11.2 m <sup>2</sup>	Ceramic	Ceramic
009	W.C. Man	7.1 m <sup>2</sup>	Ceramic	Ceramic
010	W.C. Women	7.1 m <sup>2</sup>	Ceramic	Ceramic
011	W.C. Invalid	4.9 m <sup>2</sup>	Ceramic	Ceramic
012	Cleaning Room	2.8 m <sup>2</sup>	Fine concrete	Plaster
013	Staircase	23.3 m <sup>2</sup>	Ceramic	Plaster
014	Office	19.5 m <sup>2</sup>	Carpet	Plaster
015	Corridor	-	Fine concrete	Plaster

## Legend of the materials:

-  Reinforced Concrete
-  Porotherm 30 T Profi Dryfix, 248/300/249 mm
-  Porotherm 14 Profi Dryfix, 497/140/249 mm
-  Porotherm 8 Profi Dryfix, 497/80/249 mm
-  Thermal Insulation, 100 mm

L1... Concrete Lintle



<b>Student:</b> Ahmed Alshawi	<b>Teacher:</b> Ing. M. Noori, Ph.D.	 <b>Czech Technical University in Prague</b>	
<b>Subject:</b> Bachelor Thesis	<b>Academic Year:</b> 2016/2017		
<b>Title:</b> Ground Floor	<b>Scale:</b> 1:100	<b>No. of Drawing:</b> 04	