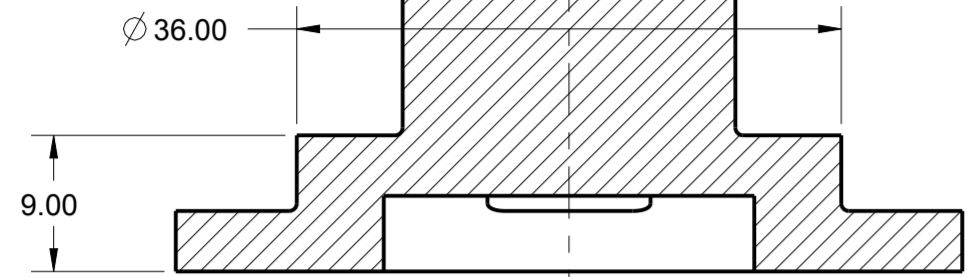
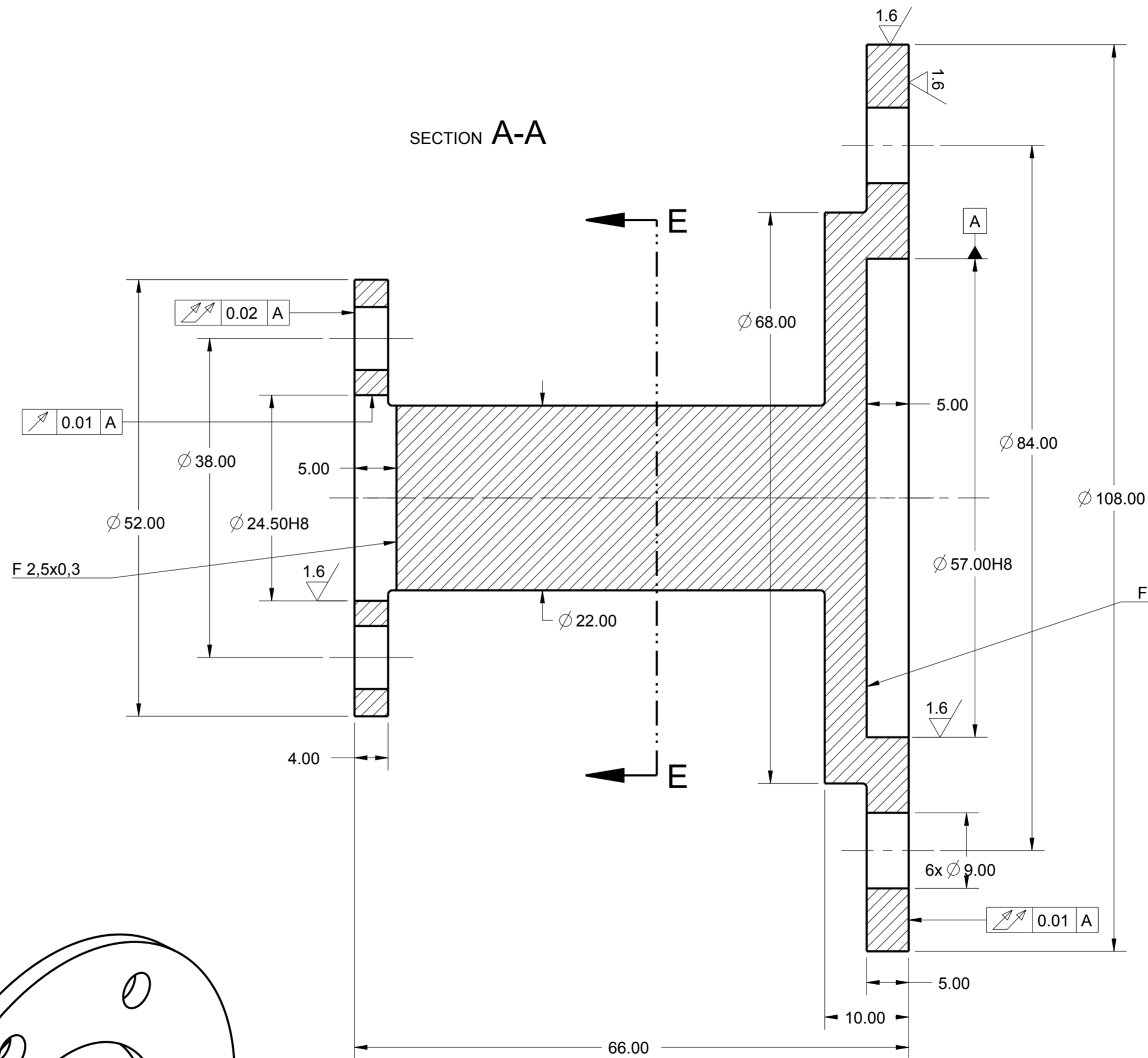


DRAWING REVISIONS							
REV	DESCRIPTION	ZONE	ECN	DATE	DRN BY	CHK BY	APP BY
A	PRELIMINARY RELEASE			2015AUG21	ZHU	LTO	
A1	MATERIAL AND HEAT TREATMENT ADDED INTO TABLE			2015SEP07	ZHU		

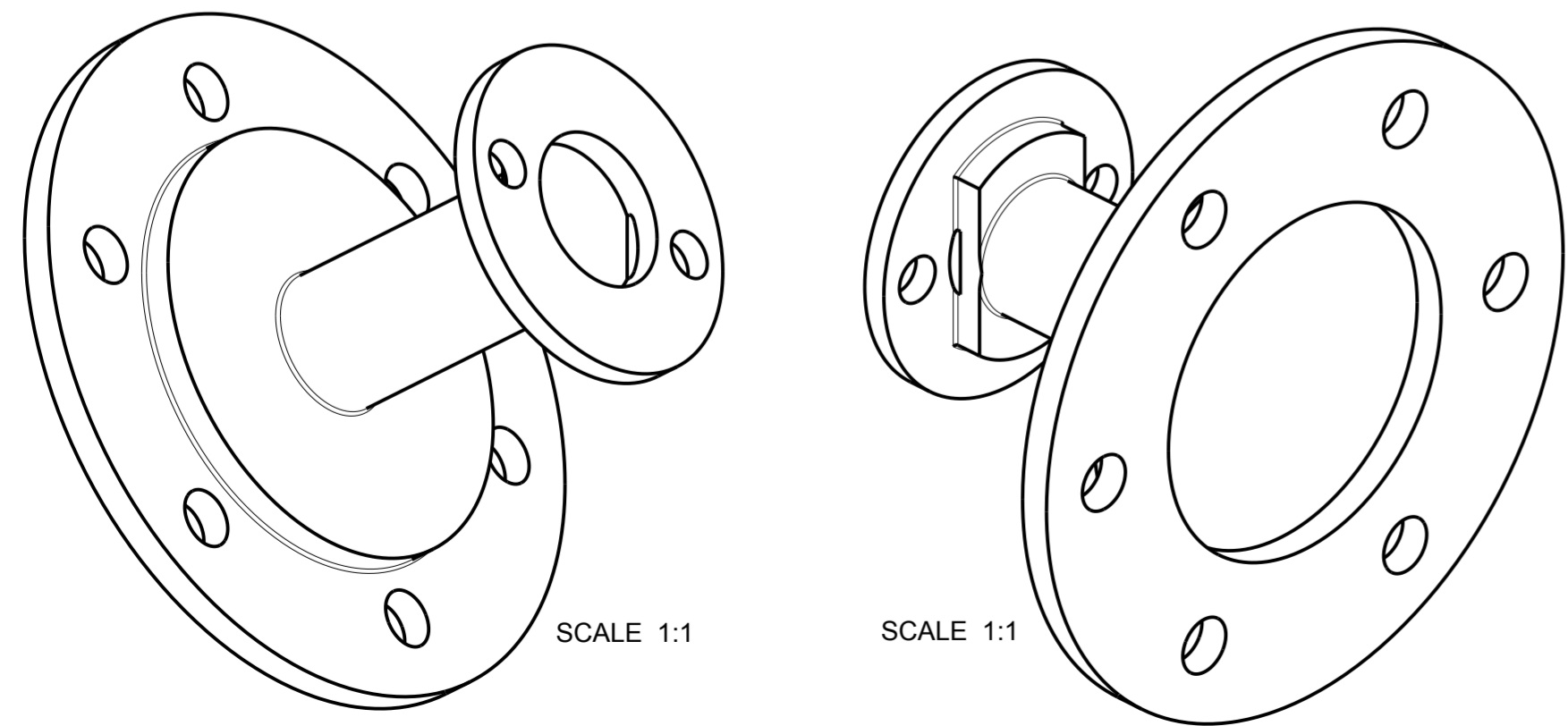
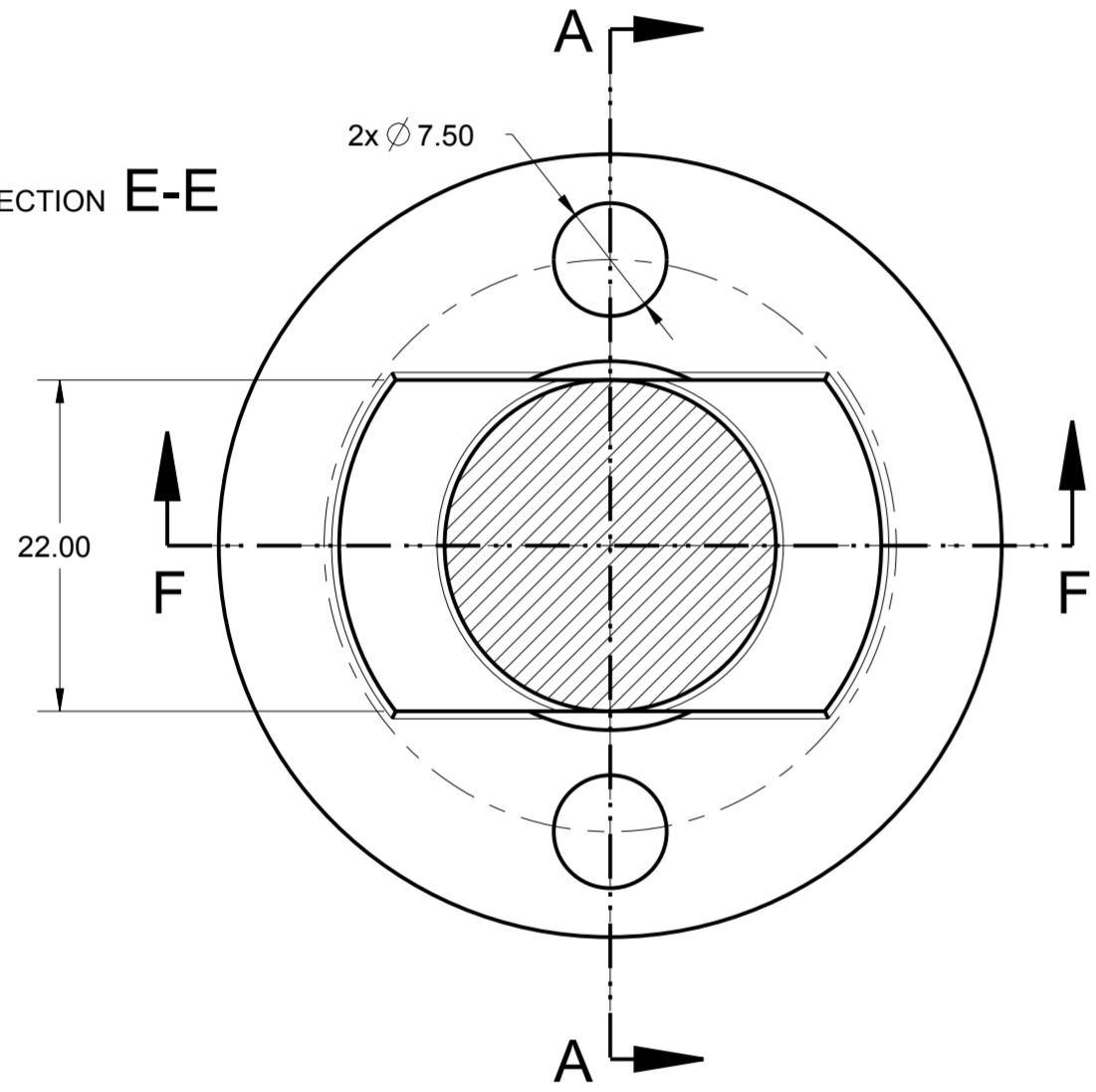
SECTION F-F



SECTION A-A



SECTION E-E



GENERAL TOLERANCES TO ISO 2768 FOR LINEAR AND ANGULAR DIMENSIONS						
TOLERANCE CLASS DESIGNATION	PERMISSIBLE DEVIATIONS IN MM FOR RANGES IN NOMINAL LENGTHS					
	0.5 to 3	over 3 up to 6	over 6 up to 30	over 30 up to 120	over 120 up to 400	over 400 up to 1000
f (fine)	±0.05	±0.05	±0.1	±0.15	±0.2	±0.3
m (medium)	±0.1	±0.1	±0.2	±0.3	±0.5	±0.8
c (coarse)	±0.2	±0.3	±0.5	±0.8	±1.2	±2
V (very coarse)	-	±0.5	±1	±1.5	±2.5	±4

NOTICE TO PERSONS RECEIVING THIS DRAWING AND/OR TECHNICAL INFORMATION

EATON CORPORATION CLAIMS PROPRIETARY RIGHTS IN THE MATERIAL DISCLOSED HEREON. THIS DRAWING AND/OR TECHNICAL INFORMATION IS ISSUED IN CONFIDENCE FOR ENGINEERING INFORMATION ONLY AND MAY NOT BE REPRODUCED OR USED TO MANUFACTURE ANYTHING SHOWN OR REFERRED TO HEREON WITHOUT DIRECT PERMISSION FROM EATON TO THE USER. THIS DRAWING AND/OR TECHNICAL INFORMATION IS LOANED FOR MUTUAL ASSISTANCE AND IS SUBJECT TO RECALL AT ANY TIME. THIS DRAWING AND/OR TECHNICAL INFORMATION IS THE PROPERTY OF EATON CORPORATION. EATON, AS SUPPLIER, WILL MEET AGREED TO DRAWING REQUIREMENTS AND SPECIFICATIONS THAT DEFINE THIS PRODUCT; HOWEVER, SUITABILITY FOR ANY INTENDED APPLICATION IS THE PURCHASER'S RESPONSIBILITY.

INTERPRET DIMENSIONS AND TOLERANCING PER ISO 129-1:2004

UNLESS OTHERWISE SPECIFIED
 GENERAL TOLERANCES PER SURFACE
 ISO 2768-1 class mK FINISH =

HEAT TREATMENT
 NONE

MATERIAL
 STEEL, CSN 12050

ESTIMATED MASS (grams)
 600

CUSTOMER
 CUSTOMER CHANGE LEVEL

CUSTOMER PART NUMBER

TITLE
 DOUBLE FLANGE

DRAWING TYPE
 VTI

RELEASE STATUS
 PROTOTYPE

SIZE
 A2

SCALE
 2:1

SHEET OF
 1

DRAWING NUMBER
 371277-VTI

A1



EEIC Prague