

Příloha I./1

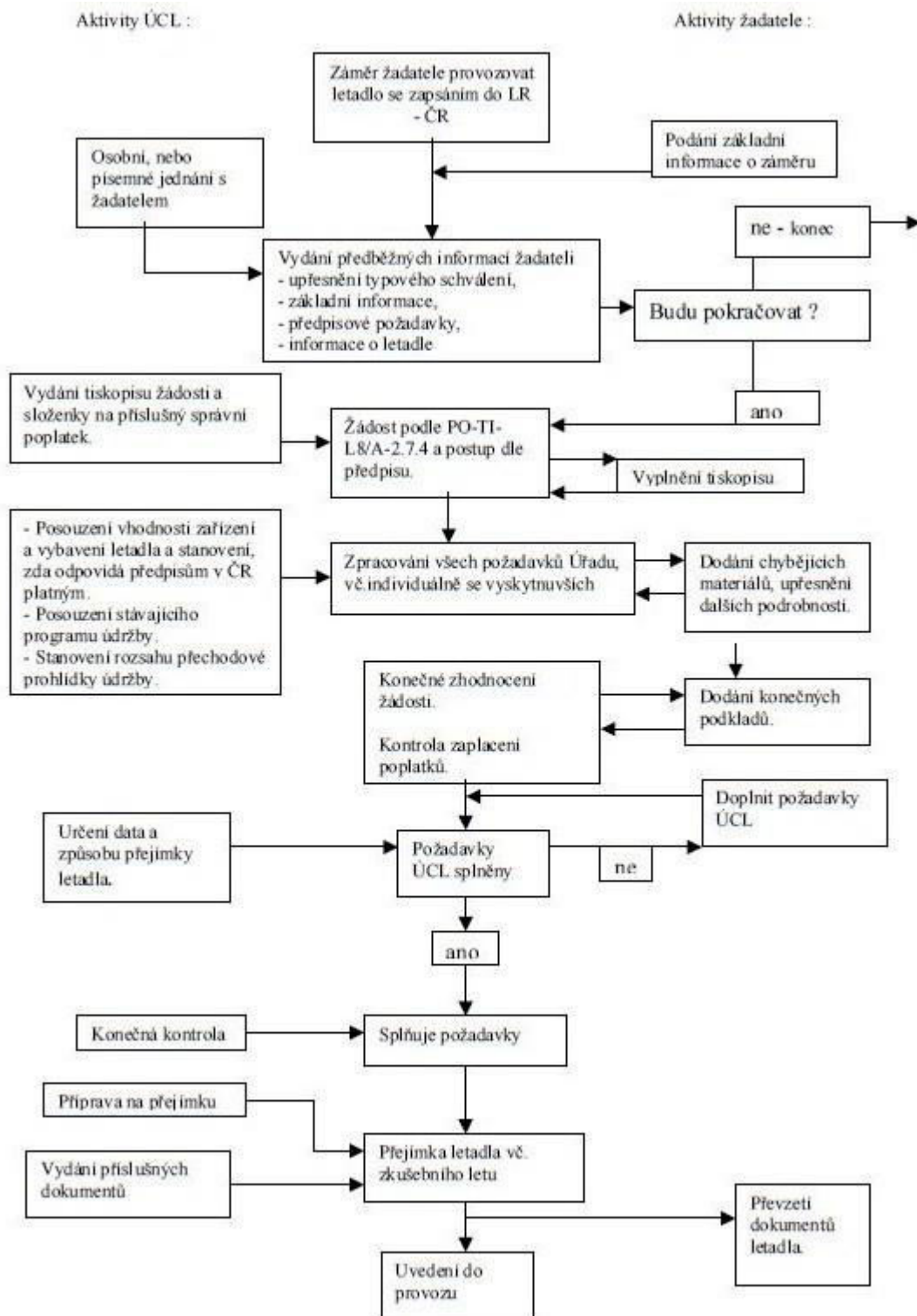
Fotografie letounu Embraer Legacy 600



Příloha I./2

Fotografie letounu Embraer Legacy 600 – 2x








---



---

**ESTIMATED VARIABLE COSTS - Per Hour**


---



---

**Legacy 600**

Fuel (1)	\$2,356.70
Fuel Additives	
Lubricants	
Maintenance Labor (2)	83.70
Parts Airframe/Eng/Avion (3)	108.95
Engine Restoration (4)	544.34
Thrust Reverser Allowance	
Propeller Allowance	
APU Allowance	76.53
Major Periodic Maintenance	
Misc Exp. - Landing/Parking	52.94
- Crew Expenses	279.39
- Supplies/Catering	147.42
- Carbon Offset (5)	
- Other	
Fractional Fuel Surcharge Cost/Hour	
Fractional Cost/Hour	
<b>Total Variable Cost/Hour</b>	<b>\$3,649.97</b>
<b>Cost per Nautical Mile</b>	<b>\$9.38</b>
Average Speed-Kts. (6) 600-nm trip	389.00

Cost data in this report is intended to be used as a benchmark

**FOOTNOTES - Size of Operation:** 1 - 2 Aircraft

**Date:** 19.8.2013

**Currency:**

<b>Type of Operation:</b>	<b>Corporate</b>
1. Fuel Cost	1.81
Liters/Hour Blk Fuel/Flt Time +15%	1,302
2. Maint. Labor Cost per Hour	93
Maint. Hours/Flight Hours	0.90
3. Incl. Engine Parts Cost	No
Engine Model	AE 3007A1E
Aircraft Model Year	New
4. Overhaul Cost Source	JSSI Plat12
5. CO2 Cost Per Tonne	
6. Block Speed Source	Estimated




---

**ANNUAL FIXED COSTS**


---



---

**Legacy 600**


---

Crew salaries - Captain (7)	\$135,000
- Co Pilot	90,000
- Flt Attendant	84,000
- Flt Eng/Other	
- Benefits	92,700
Hangar - Typical	78,800
Insurance - Hull (8)	33,794
Single Limit Liability	16,500
<hr/>	
Recurrent Training	50,000
Aircraft Modernization (9)	33,333
Navigation Chart Service	18,275
Refurbishing (10)	126,945
Computer Mx. Program (11)	11,250
Weather Service (12)	700
Other Fixed Costs	
Mgmt Fee/Yr	
<b>Total Fixed Cost/Year</b>	<b>\$771,297</b>

Cost data in this report is intended to be used as a benchmark

<b>FOOTNOTES -</b>	<b>Size of Operation: 1 - 2 Aircraft</b>	<b>Date: 19.8.2013</b>	<b>Currency:</b>
7. Crew Salary Source	11 NBAA		
Number of Crew	3		
8. Ins Hull Value/Frac Share Cost	25,995,000		
Hull Insurance Rate (%)	0.13		
9. Modernization	10 Yr Avg		
10. Refurbish Labor Hrs/Seat	105		
11. Comp. Mx Program Source	Typical		
12. Weather Service Source	Typical		




---

**ANNUAL BUDGET**


---



---

**Legacy 600**


---

Utilization - Nt. Miles	175,000
- Hours	450

Variable Cost	1,642,485
Fixed Cost	771,297
<b>Total Cost (No Depreciation)</b>	<b>\$2,413,781</b>
- Per Hour	5,364.00
- Per Nt. Mile	13.79
- Per Seat Nt. Mile	1.06

Total Cost (No Depreciation)	2,413,781
Book Depreciation (13)	2,599,500
<b>Total Cost (Book Dep)</b>	<b>\$5,013,281</b>
- Per Hour	11,141.00
- Per Nt. Mile	28.65
- Per Seat Nt. Mile	2.20

Total Cost (No Depreciation)	2,413,781
Market Depreciation (14)	1,039,800
<b>Total Cost (Market Dep.)</b>	<b>\$3,453,581</b>
- Per Hour	7,675.00
- Per Nt. Mile	19.73
- Per Seat Nt. Mile	1.52

Cost data in this report is intended to be used as a benchmark

**Footnotes - Size of Operation: 1 - 2 Aircraft****Date: 19.8.2013****Currency**

13. Book Depreciation Rate % per Year	10
14. Market Depreciation Rate % per Year	4




---

**GENERAL COMPARISON**


---



---

**Legacy 600**


---

Cabin-Height (Ft.)	6.00
- Width	6.90
- Length	49.80
Cabin volume (Cu. Ft.)	1,650.00
Cabin Door Height (Ft.)	5.60
- Width	2.50
Baggage -Int. (Cu.Ft.)	286.00
- External	
Typical Crew/Pass Seating	3/13
Weight-Max Take-off (Lbs.)	49,604
- Maximum Landing	40,785
- Basic Operating	30,081
- Usable Fuel	18,170
Payload-Full Fuel (Lbs.)	1,507
- Maximum	5,193
Certified	Yes
IFR Certified	Yes
Price - New (Corporate)/1000	25,995
- Pre Owned Rng/1000	10 200/25 000
- Years Produced	2002 - to present




---

**PERFORMANCE COMPARISON**


---



---

**Legacy 600**


---

Range-NBAA IFR Res (N.Mi.)	
Seats Full	3,090
Ferry Range - (Pilot(s) only, no pax)	3,490
Range-30 Min. Res (N.Mi.)	
Seats Full	
Ferry Range - (Pilot(s) only, no pax)	
Balanced Field Length (Ft.)	5,887
Landing Field Length - FAR 91	2,306
Landing Field Length - FAR 135	2,883
Landing Field Length - FAR 121	3,844
Rate Of Climb (Ft/Min)	
- One Engine Out	777
Cruise Speed-Max (KTAS)	
- Normal	455
- Long Range	424
Stall Speed (IAS)	
	94
Ceiling-Certified MTOW (Ft.)	
- Service	40,900
- Service OEI	23,128
- Hover IGE (Helicopter Only)	
- Hover OGE (Helicopter Only)	



**PRIVATEFLY** | Contact Us | +44 (0) 1747 642 777 | LOGIN

DOMOVSKÁ STRÁNKA | **LETY** | DESTINACE | LETOUNY | ŽIVOTNÍ STYL | O NÁS

SEARCH FOR A FLIGHT

From: [Find Nearest Airport](#)

To: [Find Nearest Airport](#)

Date & Time:  TBC

Passengers:

**Search**

1. Search for a Flight	2. Compare Quotes	3. Book your Flight
Enter your flight itinerary and special requirements into our easy-to-use flight search tool.	Live platform sources best available aircraft and aircraft operators quote quickly and competitively.	Compare aircraft details and prices, select and purchase your flight online or speak to our 24/7 expert team.



The screenshot shows the PrivateFly website interface. At the top left is the PrivateFly logo. To its right are contact options: 'Contact Us' with an envelope icon, a phone number '+44 (0) 1747 642 777', a 'LOGIN' button, a Czech flag, and a search bar. Below this is a navigation menu with tabs: 'DOMOVSKÁ STRÁNKA', 'LETY' (highlighted in red), 'DESTINACE', 'LETOUNY', 'ŽIVOTNÍ STYL', and 'O NÁS'. The main content area features a search form on the left and three steps on the right: '1. Search for a Flight', '2. Compare Quotes', and '3. Book your Flight'. The search form includes fields for 'From' (HRADEC KRALOVE), 'To' (NICE COTE D'AZUR), 'Date & Time' (22/08/2015), and 'Passengers' (2). The three steps are: 1. Search for a Flight (with an airplane icon and magnifying glass), 2. Compare Quotes (with a laptop icon showing currency symbols), and 3. Book your Flight (with an airplane icon and mouse cursor).

## SEARCH FOR A FLIGHT

The screenshot shows the search results page. On the left is a summary box for 'LEG 1' with 'Make Changes' link. It lists: 'Passengers: 2', 'Flying from: HRADEC KRALOVE (Czech Republic) LKHK', 'Flying to: NICE COTE D'AZUR (France) LFMN/NCE', and 'Departing at: TBC on 22/08/2015'. Below this is a red button '+ Add Round Trip'. The main content area is titled 'ESTIMATED PRIVATE JET FLIGHT PRICES' and includes a currency selector showing '\$', '£', and '€'. Below the title is a note: 'PrivateFly's intelligent software calculates estimates based on current market values and aircraft locations.' A green box states 'YOU HAVE SELECTED 1 AIRCRAFT GROUP.' with 'Check Availability' button and 'Share this itinerary' and 'Share by email' links. Below this is a 'WE RECOMMEND' section with a question mark icon and 'Why was this recommended?'. It features a 'SMALL JET' card with an image of a light jet, a price tag 'FROM €8 910', a description: 'Light jets are the ideal choice for short to mid-range city hops. With average cruising speeds of 400 knots and non-stop ranges of approximately 1700 miles, light jets can travel further and faster than turboprop driven aircraft, whilst maintaining high levels of efficiency.', a 'View Types' link, and a green checkmark 'Added to quote'. At the bottom, there is a red question mark icon and text: 'NEED PRIVATE JET CHARTER ADVICE? CALL +44 (0) 1747 642 777 (24 HOURS)'.

LEG 1 [Make Changes](#) ESTIMATED PRIVATE JET FLIGHT PRICES Show prices in \$ £ €

Passengers: 2  
Flying from: HR  
Flying to: NI  
Departing at: TE

[+ Add R](#)

**COMPARE FLIGHT AVAILABILITY & PRICES** [Login](#) [Join PrivateFly](#)

Enter your details below to:

- ✘ Submit your flight request to over 7000 accredited aircraft
- ✘ See live aircraft availability, prices & photos in minutes
- ✘ VIP service from our team of aviation experts 24/7

Your email address

First Name

Last Name

Phone Number

Your details will only be used for your flight requirements and contact with PrivateFly. [Enter](#)

availability

is recommended?

€3 910

With average  
ately 1700 miles.  
cost, whilst

Added to quote

777 (24 HOURS)

€5 180

Add to quote

**YOUR FLIGHT REQUEST IS NOW LIVE ON PRIVATEFLY**

**Dashboard**

- Booked Flights
- Flights in Bidding
- Contact Details
- Email Alert Options
- Change Password
- Search for Flights

Patrik Kudláček, thank you for submitting your flight request through PrivateFly. Your itinerary has been sent to all relevant private jet charter operators in our accredited network.

Our Operations team is available 24/7 please [contact us](#) if you need any assistance.

Your flight reference number is: PF-HO-2053

**FLIGHTS** In Bidding (1) Booked (0)

The flights listed below are active on the PrivateFly Network. All suitable aircraft operators have been informed and invited to quote for your flight. You can see details on all current bids by clicking on the flight below.

Flight Reference	Remaining	From
PF-HO-2053 <b>Leg 1:</b> HRADEC KRALOVE to NICE COTE D'AZUR	3 days	Awaiting Quotes

[▶ See all flights in bidding](#)

SEARCH FOR A FLIGHT

From:  [Find Nearest Airport](#)

To:  [Find Nearest Airport](#)