

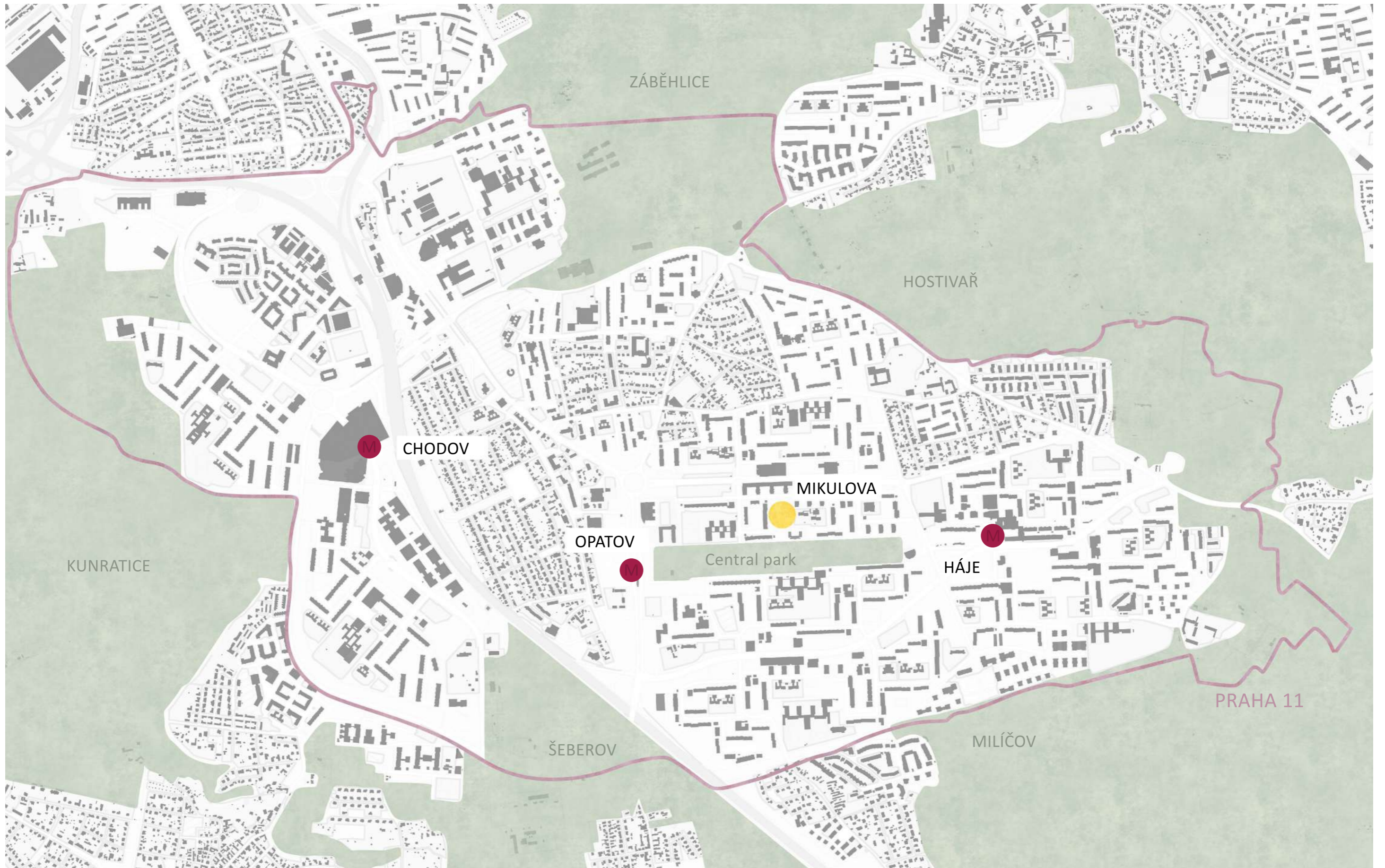
# THE SOUTH TOWN PLAYScape

ATELIER REHWALDT  
15120 ÚSTAV KRAJINÁŘSKÉ ARCHITEKTURY  
AGÁTA SYROVÁ  
AT3KA ZS 2021\_2022

# ANALYSES\_location 1:50 000



The designed area is located in the southeast part of Prague in Prague 11.



# ANALYSES\_Jižní město

## housing estates in general

a rejection of the traditional concept of the city

built mostly between mid-1950's to early 1990's

One third of czech population lives in housing estates

70 - 80 % of public space

nameless „greenery“ everywhere

unclear hierarchy of streets, paths and spaces

different functions are divided horizontally

different means of transport are strictly separated

vast and empty public spaces can feel dangerous at night

houses are more or less the same (prefab panels)



## Jižní město

The base of village Chodov was Chodův (possibly Hodův) dvorec. The very first mention about it's citizens is from 1185, as well as the eldest archeological finds from the Chodov stronghold or castle. Prehistoric routes didn't cross Prague's center, which changed in the Middle Ages. This fact helped today's Jižní Město to become relevant to Prague in the future.

First Chodov nobility that we know is the Order of the Guardians of God's Grave (řád Strážců božího hrobu). Prague 11's parts used to belong to many other church orders as well, but later, whole Chodov was owned by the Guardians. During the Thirty Year's War in 1618-1648 Jiří Vilém Michna z Vacínova owned Chodov's farmhouse. Both court and stronghold were severely damaged and just a minority of it's citizens survived. In 1676, benedictine monastery of Old Town's St. Nicolas claimed Chodov and rebuilt it's court and farmhouse. Later it was no longer their interest and they sold it to the owner of Kunratice in 1728. After cancellation of corvée in 1848 villages Chodov, Litochleby, Šeberov and Hrnčíře formed one village, eventhough Šeberov and Hrnčíře separated in 1908. During this event, the 2nd military mapping was happening, followed by the 3rd one.

In 1918, plans of the Great Prague were made, but Chodov wasn't included in it. Háje and Milíčov belonged to Hostivař back then, but eventhough Hostivař was accepted as a part of Great Prague, Háje and Milíčov were excluded. Later in the 1920s, owner of Kunratice, whose family owned Chodov for almost 200 years, sold it to Prague. In 1949, Chodov and Háje belonged to district Praha - východ, but in 1960 it changed to Praha - západ. During the 1950s it was still used as a farmland as in 1948 Chodov court was transformed to a farm of Státní statek Praha (National farmhouses), so in 1959 it became part of Chodov JZD.

There's a huge difference between 1950s and today's ortophoto map. In the 50s there's still just a lot of small fields, as it was shot before privatization. The biggest boom of Jižní Město started in the 70s with growth of housing estates.



There is an unused area of a green space connected to a Cetral Park in the Jižní Město Housing Estate located near Mikulova Street between the Opatov and Háje underground stations.

# ANALYSES\_history



1945



1953



1966



1975



1988-89



2007



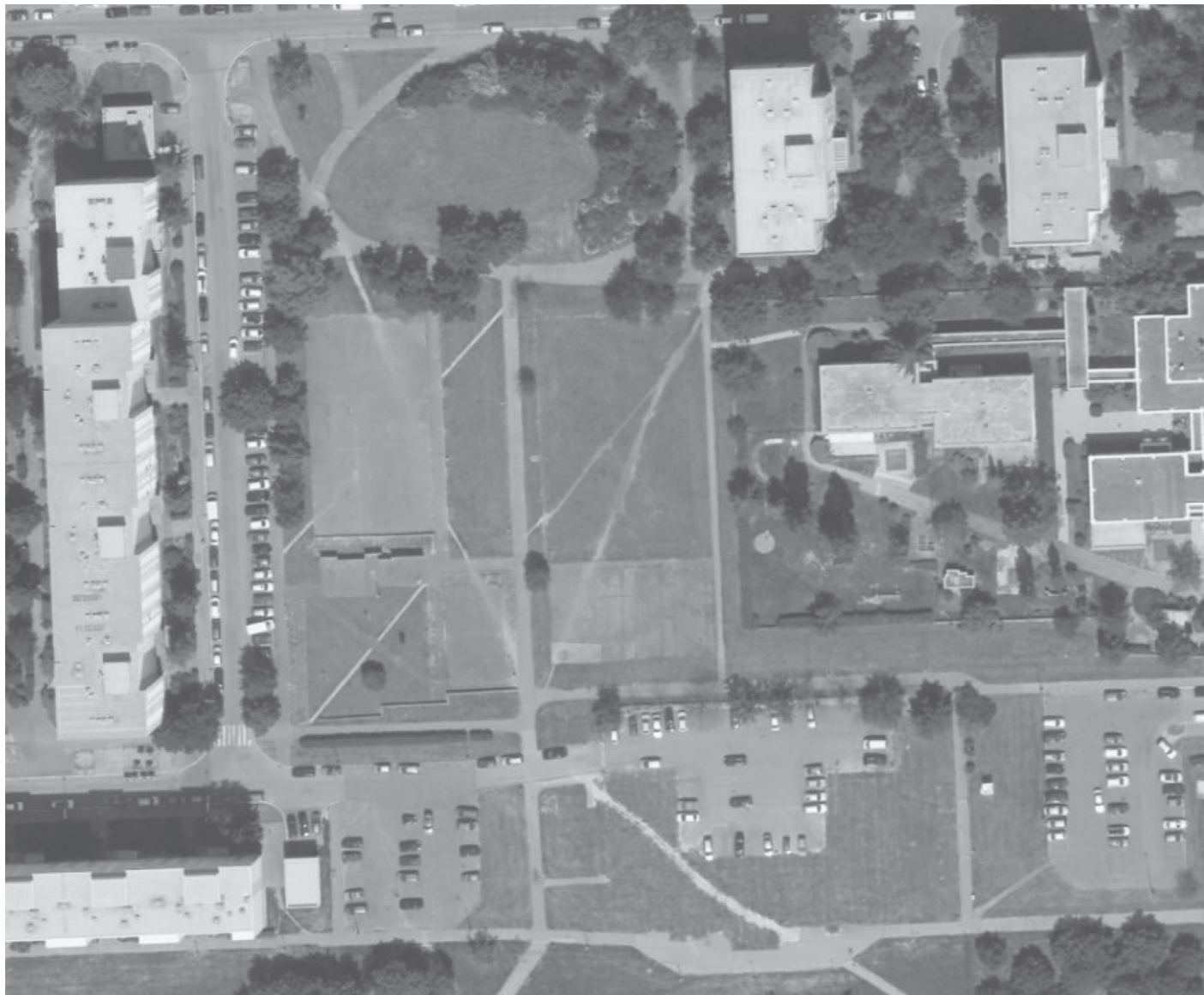
2012



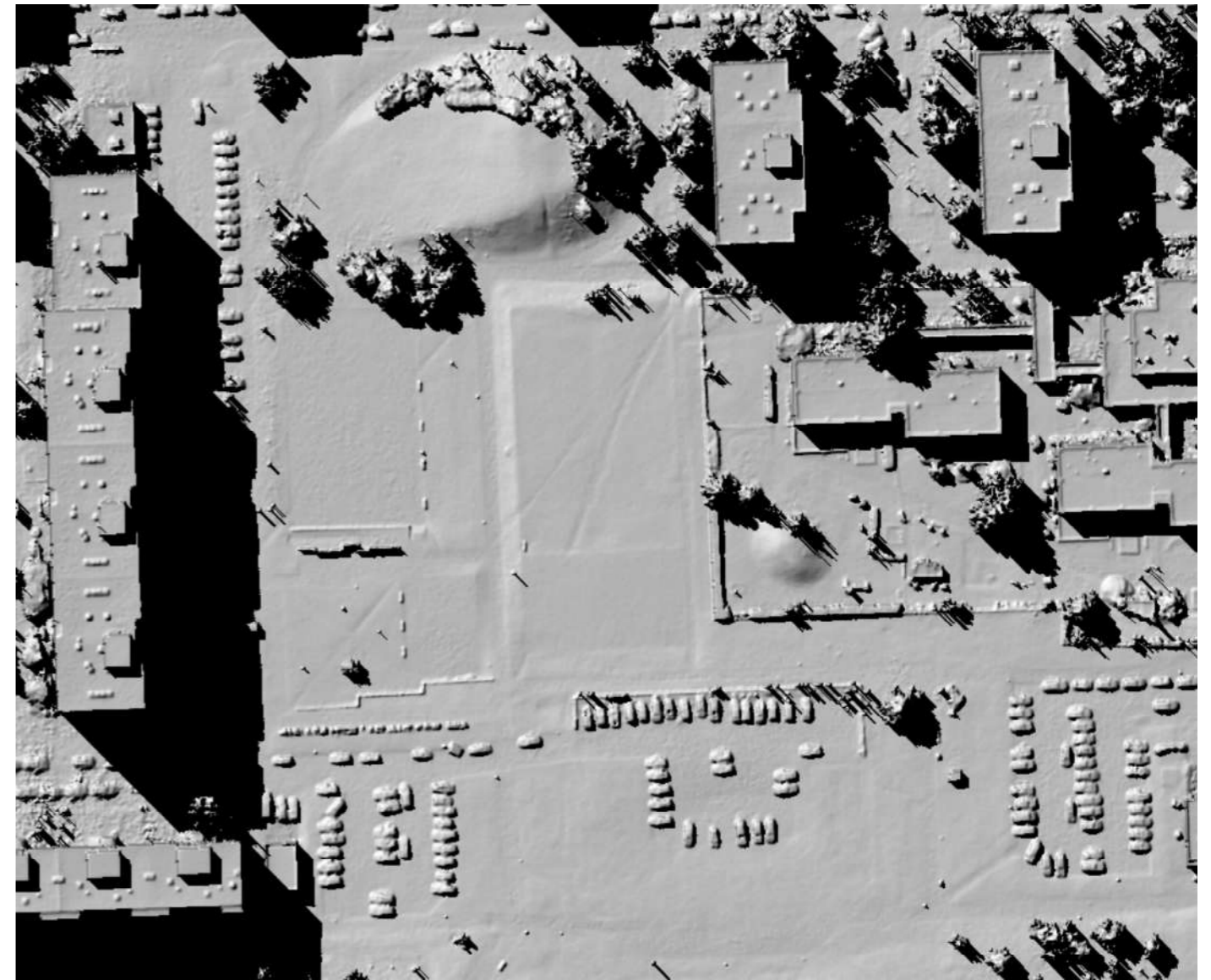
2020

Before there was Jižní město housing district, the whole area was not developed. An underlying change happened between 1975 and 1988-89 when the area was developed. Since then, the area has not changed apart from demolition of a building in the south part of the area that was originally meant to serve as a post office.

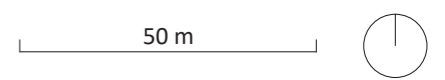
orthophoto map



geomorphology



An up-to-date orthophoto map allows us to see the current state of the area which consists mostly of non-functional path network, other human-created paths and empty unutilised paved surfaces. The terrain is mostly flat with a small hill in the north part.



# ANALYSES\_current state



## Strengths

- terrain difference
- connection to Central park
- traffic availability
- schools and kindergartens within walking distance
- vegetation

## Opportunities

- potential of a cultural centre
- increase the attractiveness of the place
- functional path system
- unification of surfaces

## Weaknesses

- unused area
- path system without function
- bad condition of trees
- lack of care
- improperly placed furniture

## Threats

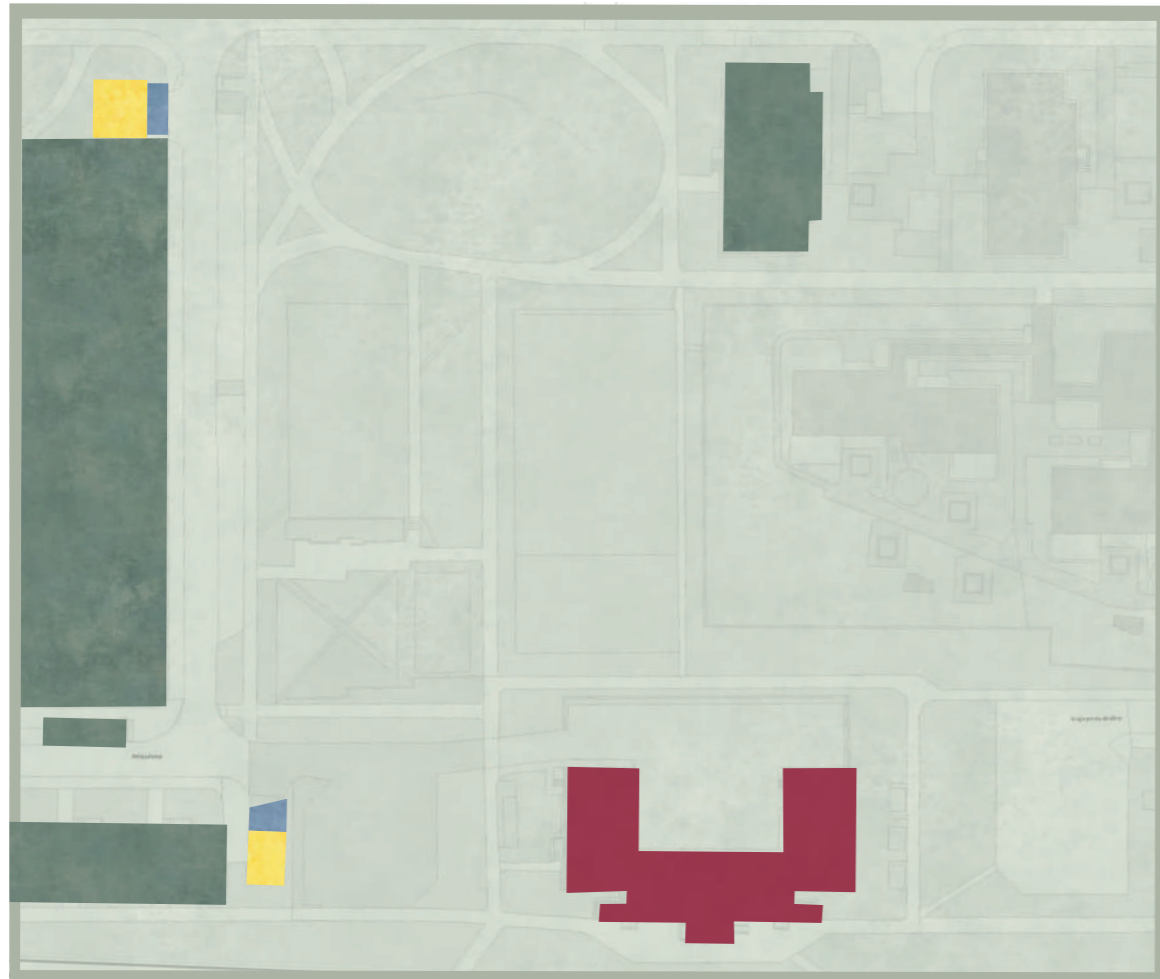
- hidden corners
- vandalism



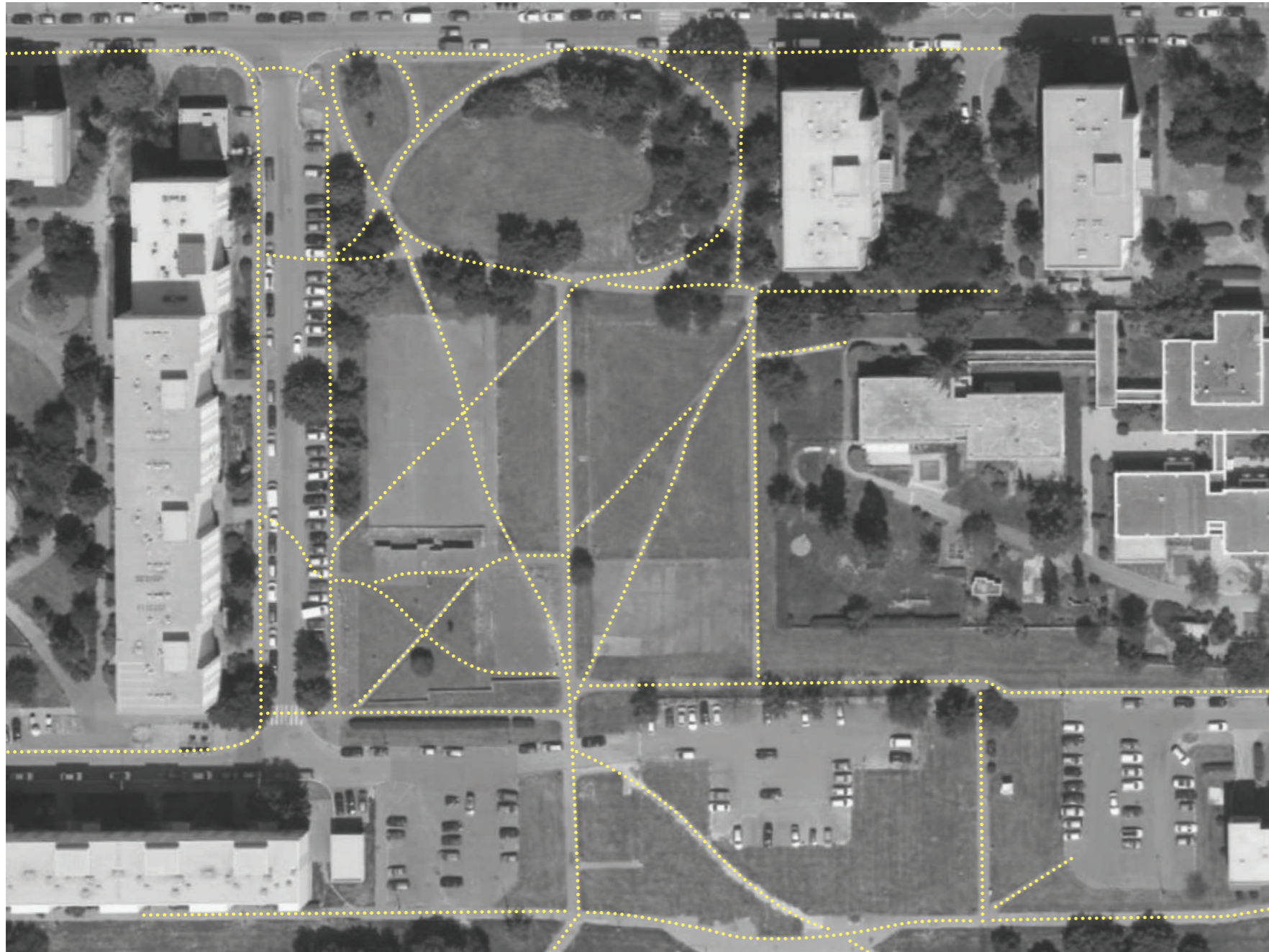
# ANALYSES\_photodocumentation



# ANALYSES\_ownership



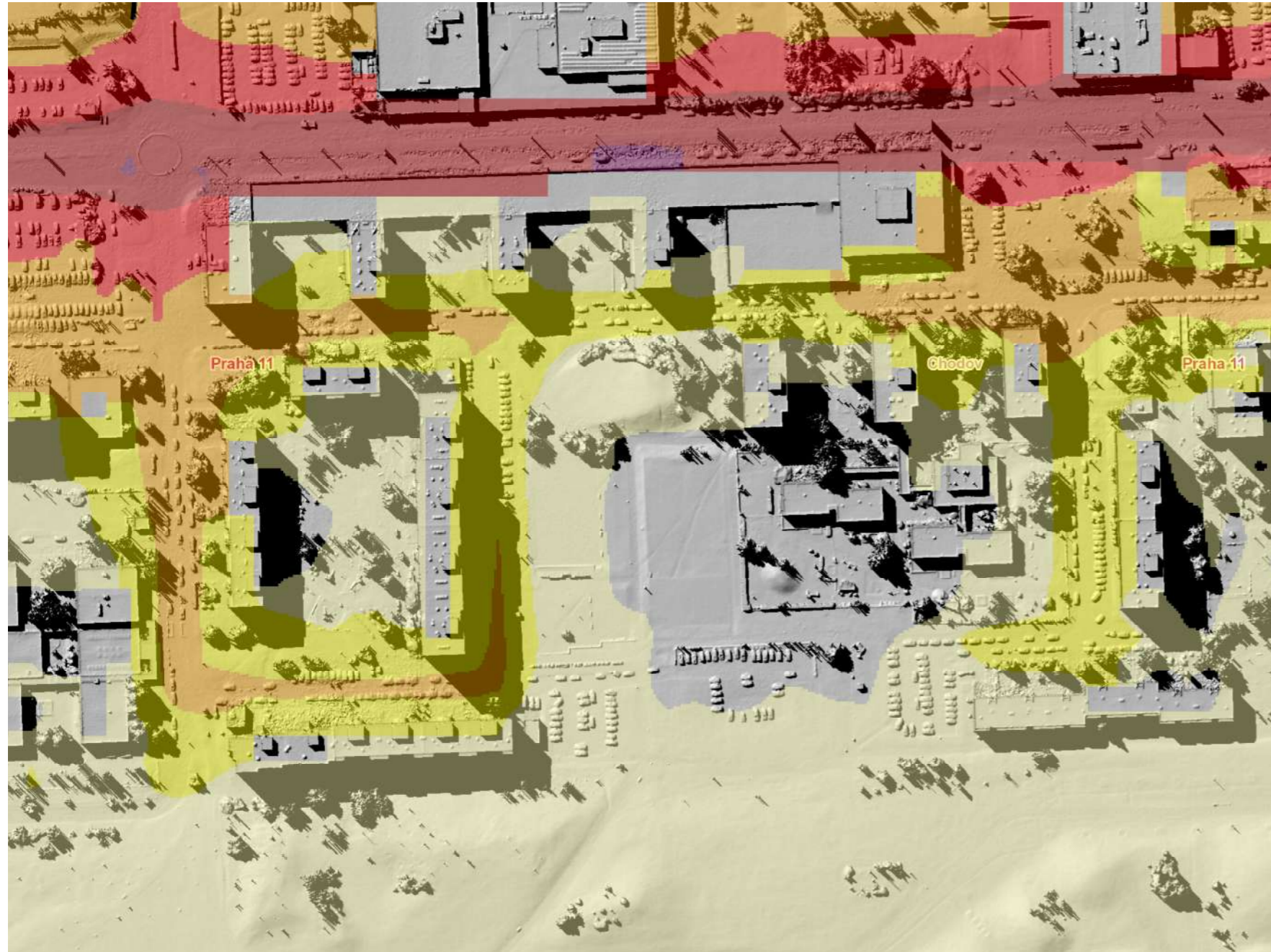
- Prague
- collective ownership
- Predistribuce a.s.
- Pražská energetika a.s.
- Czech Republic



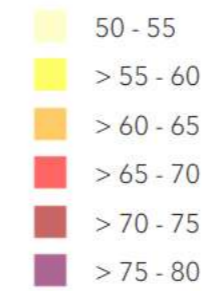
50 m



# ANALYSES\_noise map



Designed area is located in the most peaceful part of the Jižní město housing estate. Mikulova and Bachova Streets together with Hviezdoslavova Street are the only source of a slight noise. Hviezdoslavova Street is a busy four-lane road but the noise is muted by the fact that the designed area lies 70 meters away and there is a prefabricated house between Hviezdoslavova and Bachova Streets.



100 m



21.6.2021



8:00



12:00



16:00



19:00

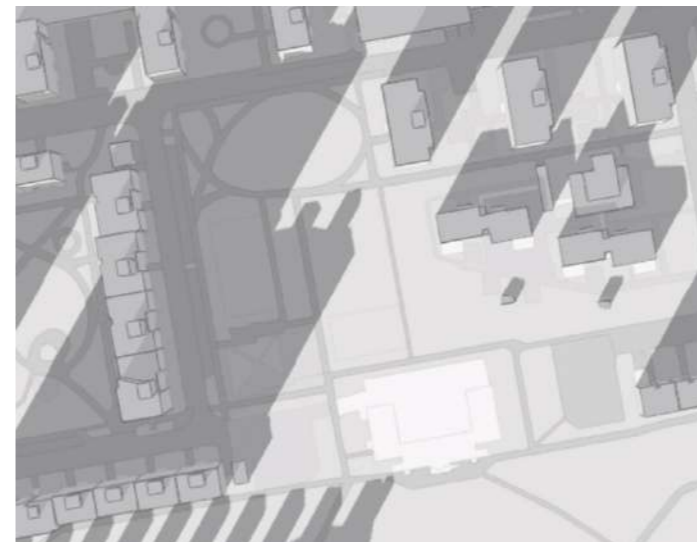
21.12.2021



8:00



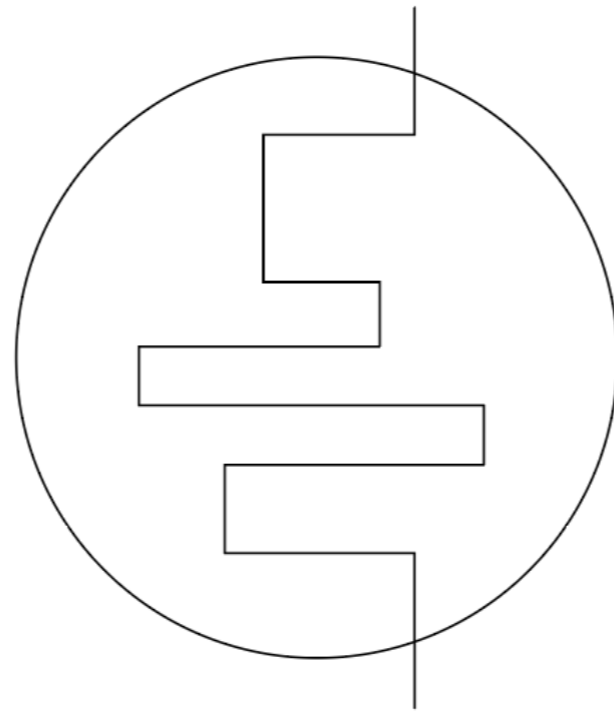
12:00



14:00



16:00



THE SOUTH TOWN PLAYScape

PERSPECTIVE



# CONCEPT



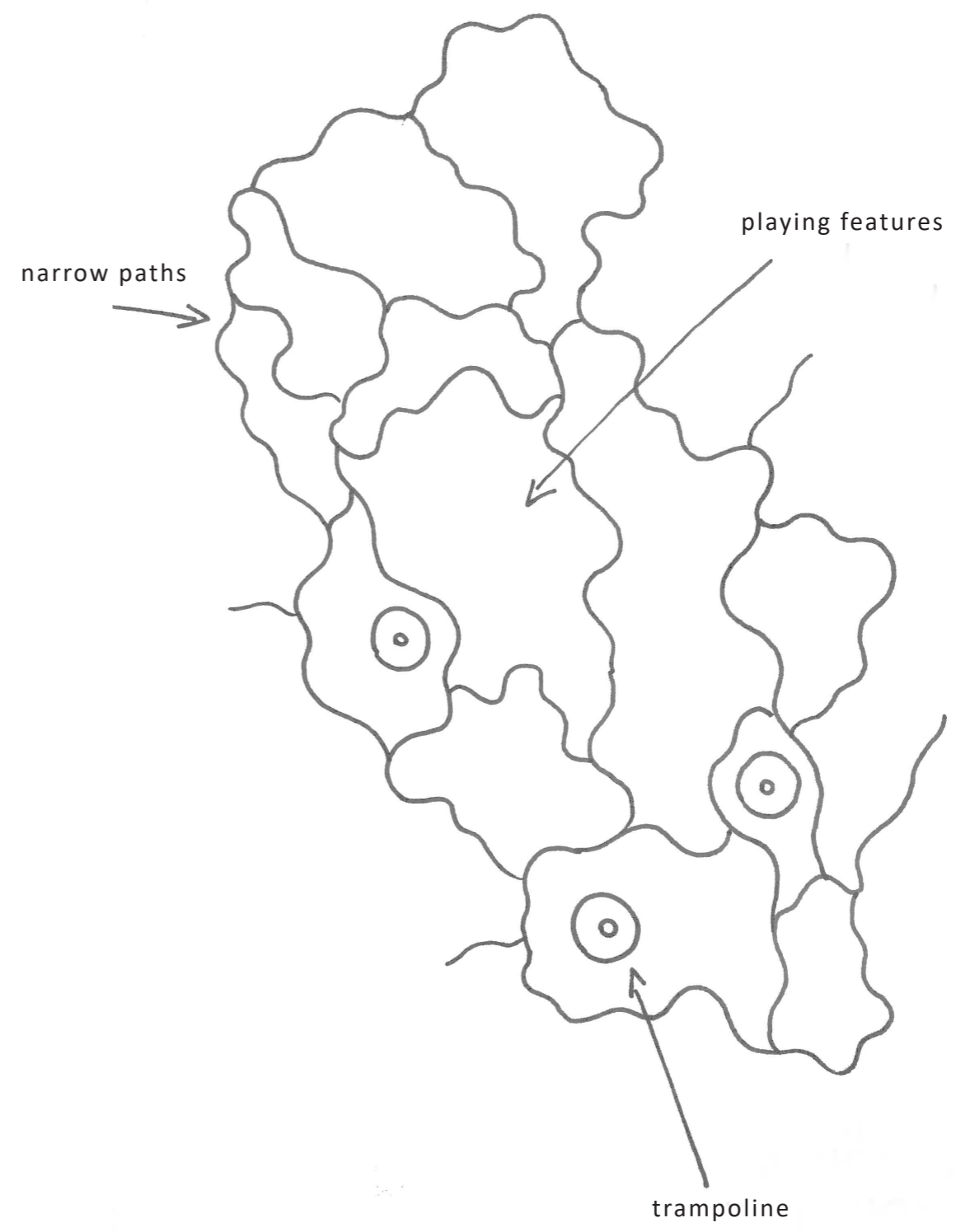
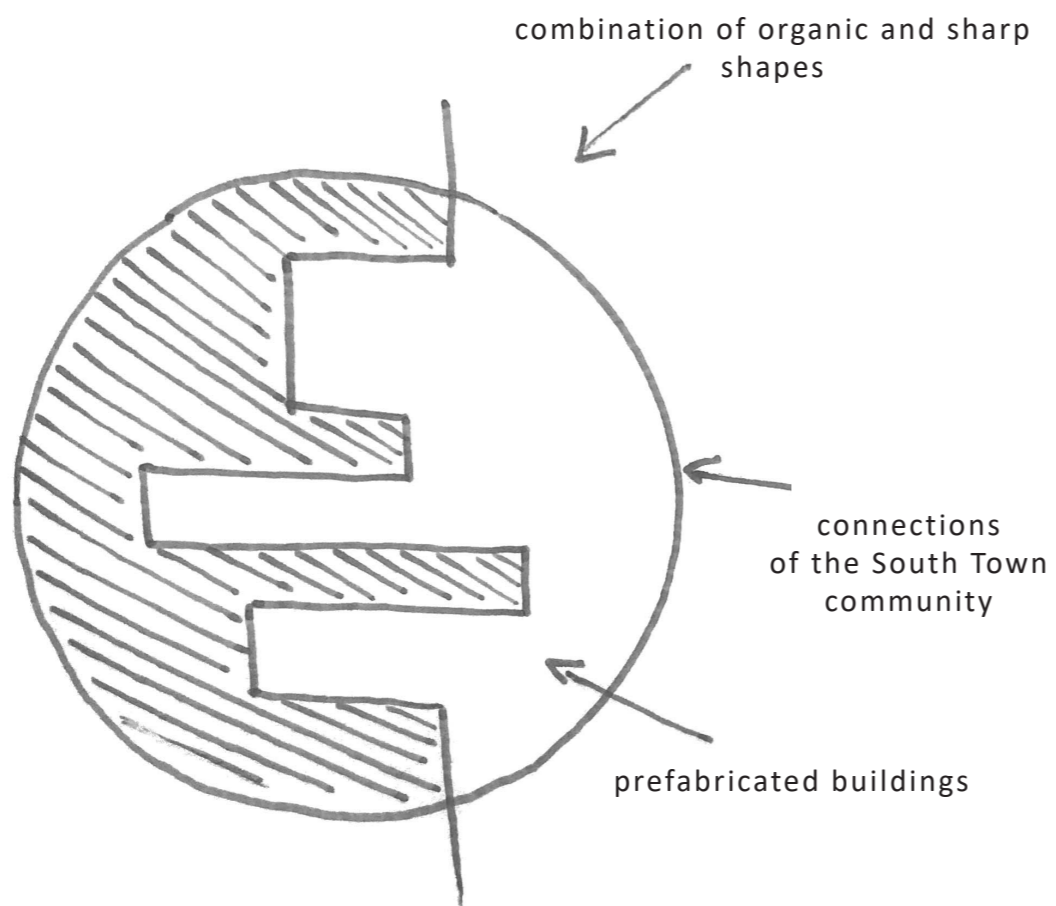
There is an unused area of a green space connected to a Central Park in the Jižní Město Housing Estate located near Mikulova Street between the Opatov and Háje underground stations.

This study aims to bring new ideas and activities for all age groups and also aims to let people pass through the area but also to stop and decompress for a while. A hill, organically-shaped paths and irregularly planted trees create a contrast to the nearby prefabricated houses.

Residents of the Jižní Město housing estate can therefore enjoy a view of different shapes other than only geometrical buildings they live in. As soon as a visitor passes the grove which divides the area from the Central Park, he finds himself in a place different in its character. He can enjoy an ice-cream cone or a nice cold drink (or a mug of mulled wine when not sleighing) in the kiosk, play a match in a public sports area or watch other people's matches from the sitting steps which are lining the sports area, sit back, relax and listen to the trees or visit the playscape for children AND adults.

The area is designed to offer an escape from the everyday life and, at the same time, promotes the Jižní město housing estate and supports its community.





# SITE PLAN



## materials



playground - tartan



path - poured concrete



kiosk - wooden shingles

20 m

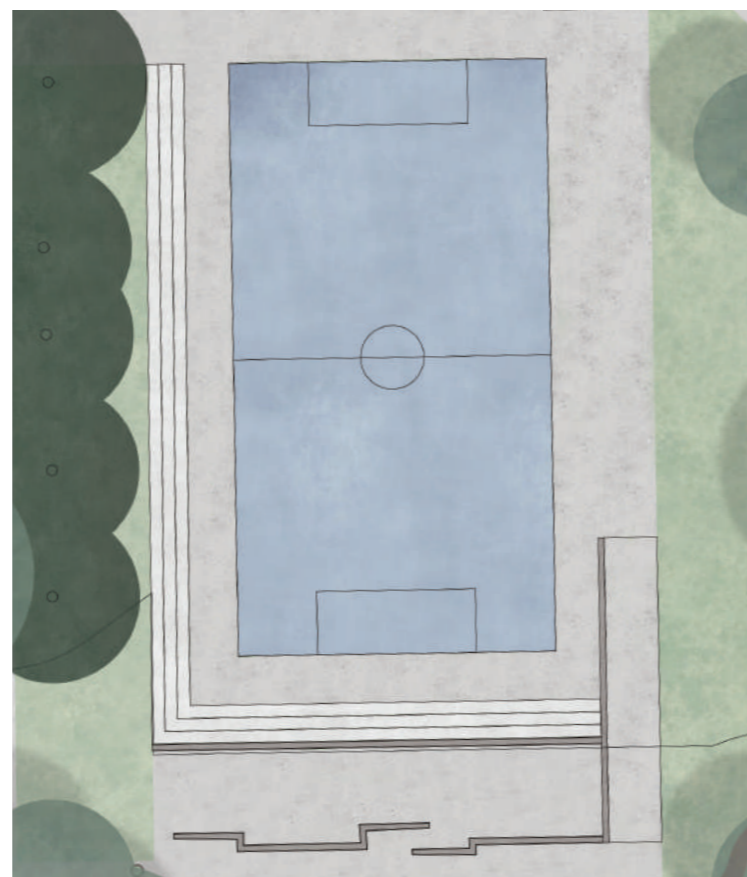


**playscape**



Urban playscape designed for kids and adults includes trampolines and other playing features.

**sports ground**



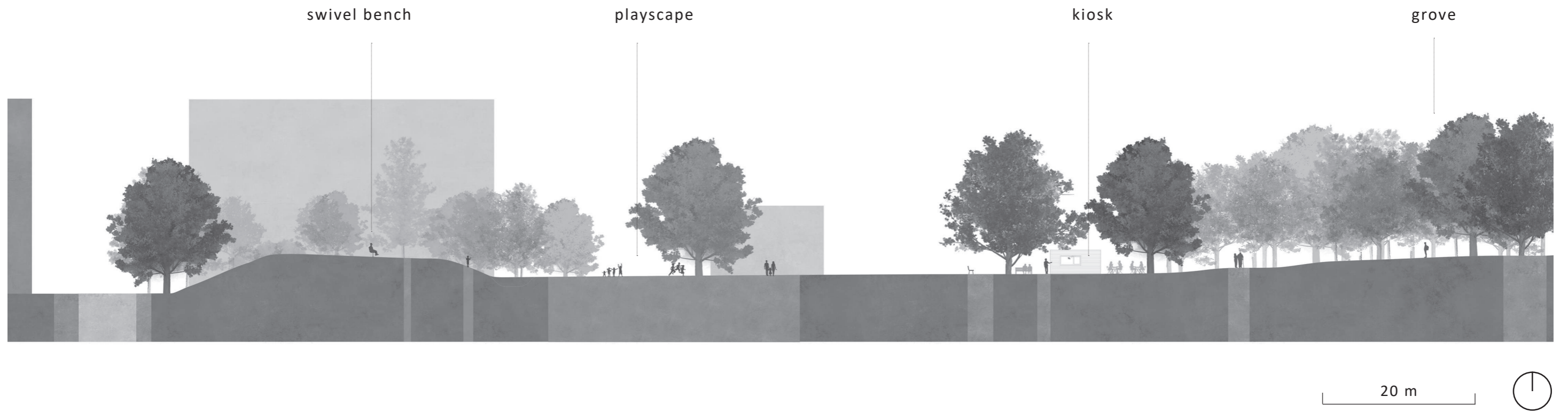
You can play a match in a public sports area or watch other people's matches from the sitting steps which are lining the sports area.

**parking lot**

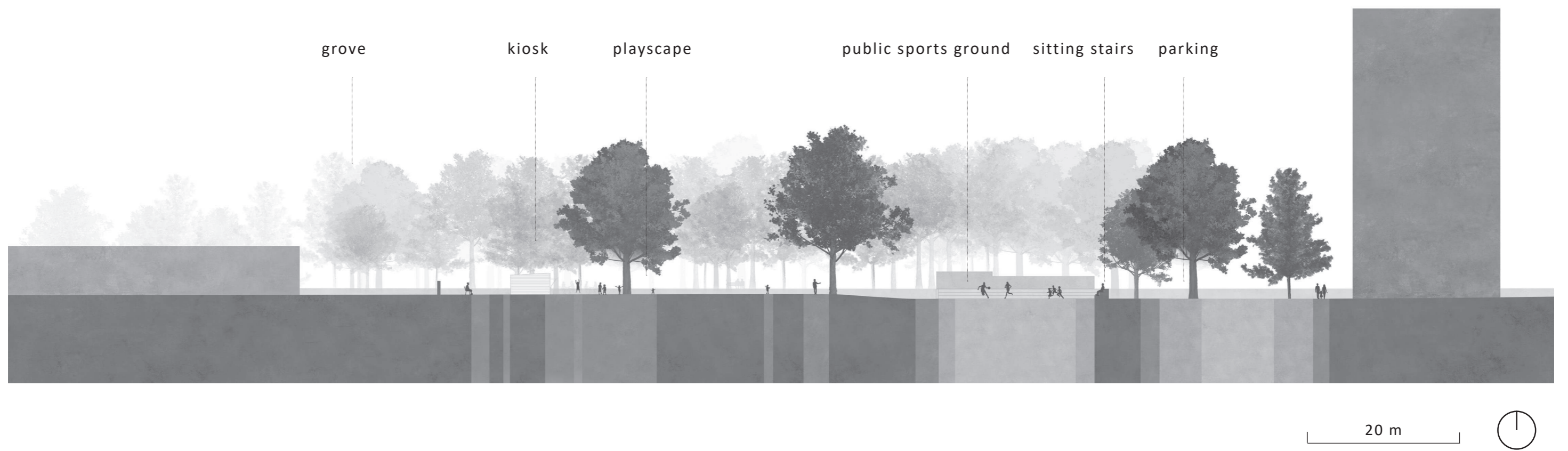


Designed parking lot replaces three smaller parking lots which are nowadays located in Mikulova street.

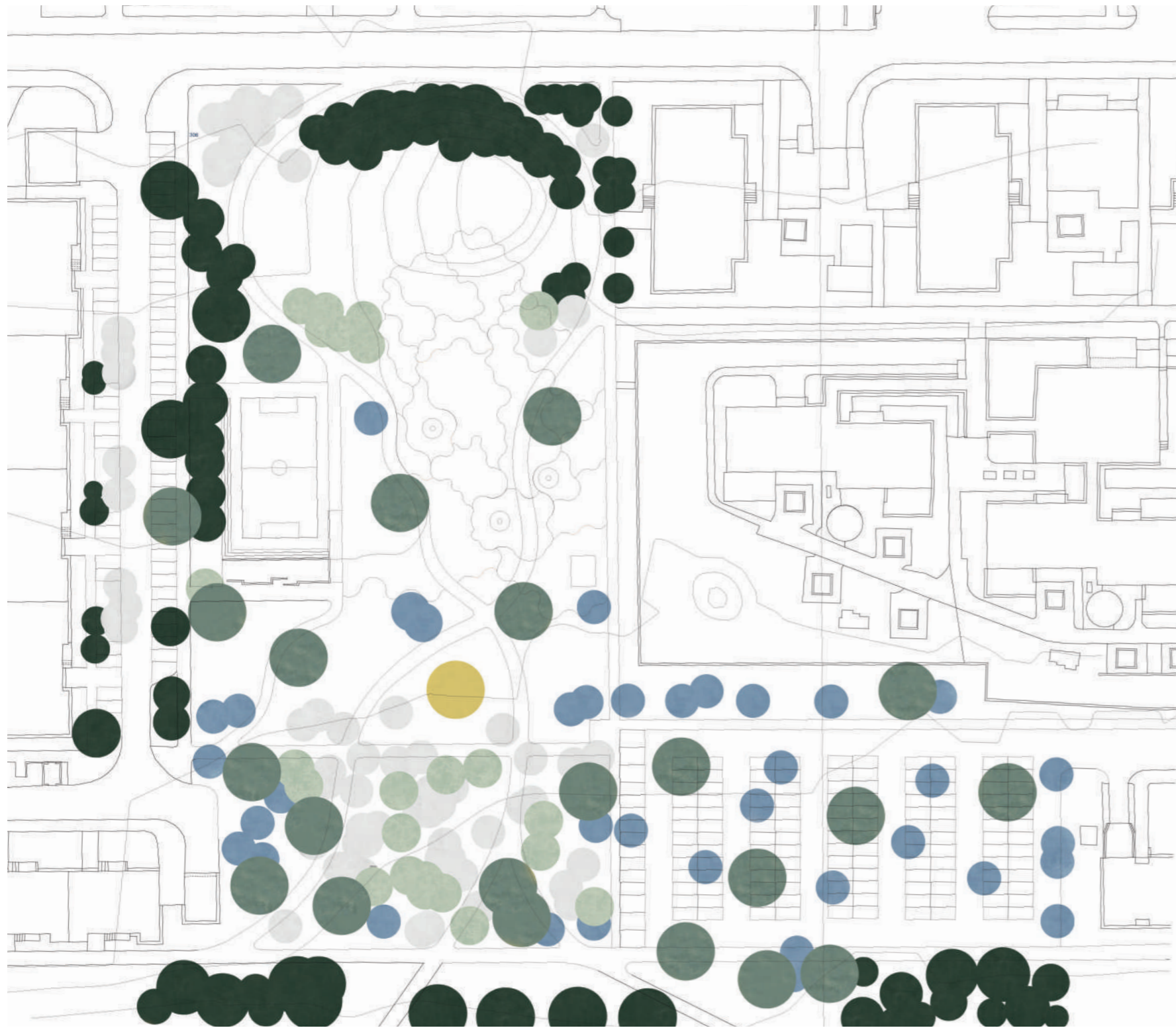
# SECTION A-A'



SECTION B-B'



# VEGETATION



- current vegetation
- *Quercus cerris*
- *Betula pendula*
- *Platanus acerifolia*
- *Prunus padus* (*Prunus padus* 'Schloss Tiefurt' on the parking lot)
- *Pinus nigra*

## current vegetation:

- Acer negundo*
- Acer platanoides*
- Acer pseudoplatanus*
- Ailanthus altissima*
- Betula pendula*
- Crataegus monogyna*
- Fraxinus excelsior*
- Picea abies*
- Pinus bigra*
- Prunus avium*
- Prunus cerasifera*
- Sorbus aria*
- Robinia pseudoacacia*
- Tilia cordata*
- Clematis vitalba*
- Cotoneaster dammeri*
- Forsythia x intermedia*
- Juniperus sabina*
- Ligustrum vilgare*
- Spirea trilodata*

# FRONT YARDS



*Anemone blanda*  
'Blue Shades',  
Balkanwindröschen



*Helleborus niger*  
'Christmas Carol  
White'



*Aster divaricatus*,  
Wildaster



*Anemone blanda*  
'White  
Splendour',  
Balkanwindrös-  
chen



*Smilacina racemosa*,  
Schattenblume



*Eranthis hyemalis*,  
Winterling



*Carex pendula*,  
Hängesegge



*Vinca minor*  
'Alba', Immergrün



*Scilla siberica*,  
Sibirischer  
Blaustern

# MOBILIAR



mmcité



bega



mmcité



mmcité

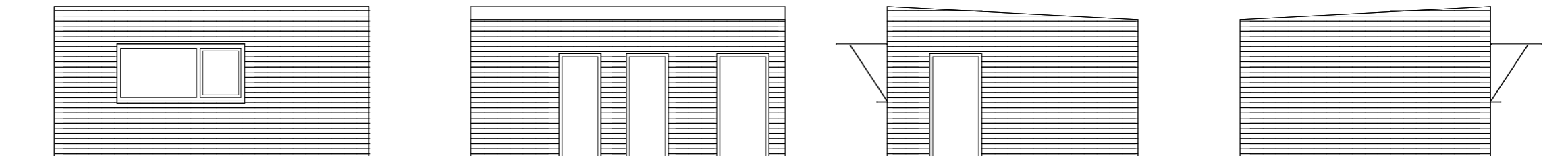
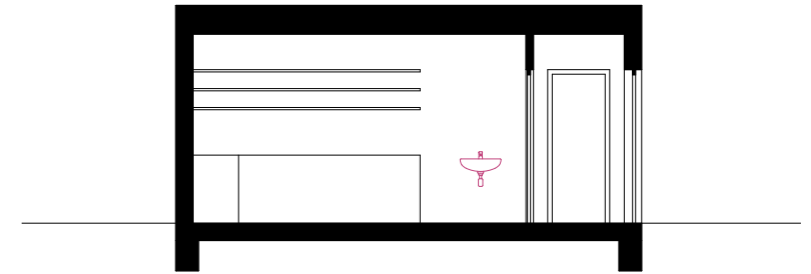
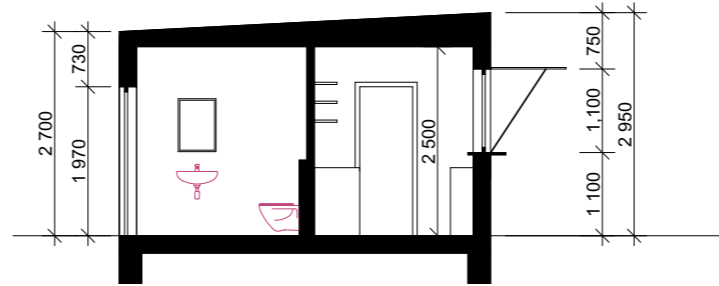
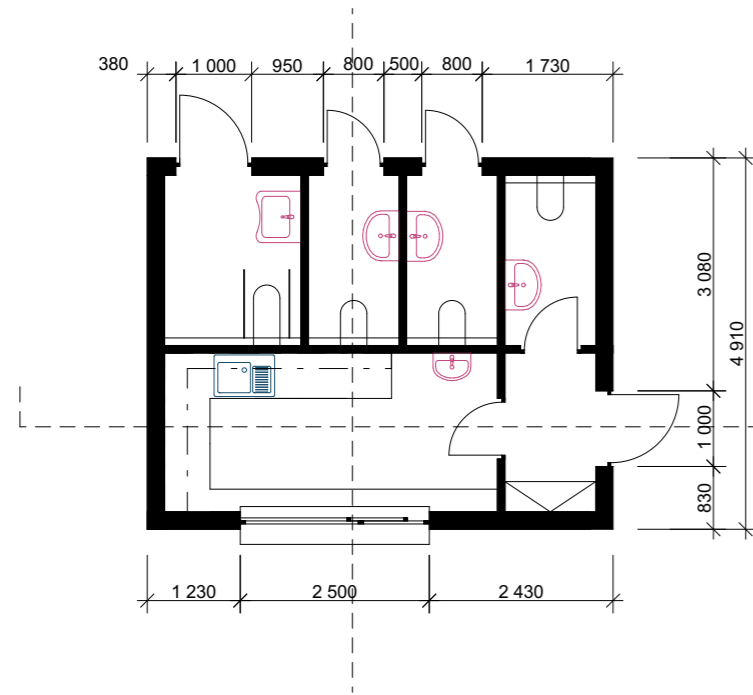


streetpark



streetpark





# WATER SYSTEM



LIGHTING

