

V I L L A S

MAY be considered under three different descriptions.—First, as the occasional and temporary retreats of the nobility and persons of fortune from what may be called their town residence — and must, of course, be in the vicinity of the metropolis.— Secondly, as the country houses of wealthy citizens and persons in official stations, which also cannot be far removed from the capital: and thirdly, the smaller kind of provincial edifices, considered either as hunting seats, or the habitations of country gentlemen of moderate fortune.—Elegance, compactness, and convenience, are the characteristics of such buildings, either separate or combined, in contradistinction to the magnificence and extensive range of the country seats of our nobility and opulent gentry.

They should be so planned as to present the general suite of apartments on the ground floor, and be so connected with each other as to allow access to each room without interfering with any branch of the offices: the apartments will, of course, be enriched according to the purposes for which they are intended.

The offices should be nearly on a level with the mansion house, whether attached to or detached from it, and be so disposed as to remove, by degrees, the several parts, which, being connected, may prove disagreeable as to smell or noise. The steward's office and room, the housekeeper's and store room, the butler's room and pantry, may be nearly connected with the house; the pantry, larder, kitchen, scullery, pastry, and servants' hall, &c., to follow: and it will be found that such distribution of parts will be a convenient attachment, rather than, as it too frequently happens, a connected nuisance.

P L A T E X I.

Contains the plans and front for a Villa.—On the ground plan are the vestibule, parlour, eating and drawing rooms, a small library or dressing room, light closet, &c. The height of this story is 13 feet 6 inches.

The vestibule is intended to be finished with a small Doric cornice; the sides and dado stuccoed, with plain base and surbase mouldings; the side next the staircase finished with Doric columns, over which an alcove is formed to the entrance of the stairs; the floor laid with Portland stone in squares. The staircase sides prepared for paper to toras skirting; the stairs yellow deal moulded, nosing with plain square ballustras, and common moulded handrail; small plain architrave cornice, and ogee round opening to the skylight.

The Parlour.— Architrave cornice, sides of the rooms prepared for paper, stucco dado, and moulded base and surbase, veined marble chimneypiece with wood dressing.

Eating Room.—An Ionic enriched cornice, sides of the room and dado stuccoed, plain base and furbace mouldings, veined marble chimneypiece and wood dressings, frieze enriched with fruit and leafage, plain architrave frieze and cornice to the doors.

Drawing Room.—Corinthian cornice, two members enriched, the sides of the room and dado stuccoed, plain base and furbace mouldings, statuary marble chimneypiece with wood dressings; enriched frieze and tablet, the subject a sacrifice; plain architrave frieze and cornice to doors.

The Library to be fitted up with yellow deal bookcases, with sliding shelves 10 inches deep, veined marble chimneypiece and wood dressings, common straight-joint yellow deal floors, six-panel doors, and ovolo wainscot fashes throughout this floor.

The Bed Rooms are intended to have small cornices, the sides of them prepared for paper to a toras skirting, veined marble mantle and jamb chimneypieces and wood dressings, ovolo wainscot fashes, six-panel doors and plain architrave to the same, the floors common straight-joint yellow deal. The height of this story is 9 feet 6 inches.

On the Basement Story are the kitchen, scullery, pantry, housekeeper's room, cellars, &c.

The kitchen, scullery, pantry, and maid's room, plastered to the skirting, and paved with flat tiles.

The housekeeper's and store room prepared for paper to a toras skirting, six-panel doors, and the floors common straight-joint yellow deal. These offices are 9 feet high.

The front is intended to be of brick stuccoed, and the roof covered with slate.

P L A T E X I I .

Contains the ground plan, bedchamber floor, and principal front.—The ground plan contains a vestibule, anti-room, drawing room, breakfast parlour, eating room, library and cabinet, kitchen, scullery, pantry, and larder:—The height of this story is 18 feet. The same kind of finishing may be, in a great measure, employed as proposed for the former design, as well on this floor as on the bedchamber plans, which contain four sleeping rooms of 11 feet, and the upper ones 9 feet, in height.

The front is designed to be of brick stuccoed, the portico at the entrance to be formed of wood and fanded, the ballustras to be treated in the same manner, and the roof to be covered with slate.

PLATE

P L A T E XIII.,

Offers a basement, ground plan, and elevation.—The basement contains kitchen, scullery, larder and pantry, butler's room and plate closet, housekeeper's, store, and maids' room, steward's room and office, servants' hall, and footman's room. The height of this floor is 10 feet.

The steward's room, office, housekeeper's room, still room, and butler's pantry, are intended to be finished with small architrave cornices, with their sides prepared for paper, stucco dado, plain base and surbase mouldings, veined marble chimneypieces and wood dressings, six-panel doors and plain architraves, and common straight-joint yellow deal floors.

The kitchen plastered to a dwarf wainscot, Portland chimneypiece; the larder, scullery, and pantry, plastered to the skirting, the floors laid with brick; the passages, servants' hall, and footman's room, to be plastered to the skirting, Portland chimneypiece, and the floor laid with brick: the sides of the cellars to be lime whited.

The principal plan contains a vestibule, anti-room, breakfast parlour, eating room, music and drawing room, billiard room, study, cabinet, and library. The height of this floor is 12 feet.

The Vestibule is intended to be finished with a Doric cornice and frieze, enriched with trygliphs, &c.; the sides to be stuccoed and formed in pannels, with fluted columns and pilasters of wood, deal base and surbase mouldings, and the floor paved with Portland stone in squares.

The Anti-Room.—A small composed cornice, with two members enriched, the sides and dado stuccoed, deal base and surbase mouldings, and the circular niches to contain antique urns, as stoves, bronzed.

The Breakfast Parlour.—An architrave cornice, the sides of the room prepared for paper, stucco dado, plain base and surbase mouldings, and veined marble chimneypiece, &c.

The Eating Room.—An Ionic cornice, with frieze of ox skulls and festoons of fruit, the sides stuccoed and formed in pannels, deal base and surbase mouldings, a stucco dado, and statuary marble chimneypiece, with enriched frieze and tablet.

The Music Room.—A composite cornice, enriched frieze composed of chaplets of flowers and leafage, encircling compositions of musical instruments—the sides stucco, deal base and surbase mouldings, enriched statuary marble chimneypiece with

with enriched frize and tablet, and the doors finished with architrave and trusses, frize and cornice, &c.

The Drawing Room.—Corinthian entablature, the frize painted in chiaro oscuro of dancing boys and flowers, the sides hung with silk encircled by a rich gilt frame, dado framed flush, carved base and surbase mouldings, the door cases enriched by an entablature with ornamented frize and trusses, the pannels of the doors painted with arabesque ornaments in chiaro oscuro, enriched stucco ceiling, composed of pannels and ornamental foliage, interspersed with allegorical subjects in painting.

The Billiard Room.—A plain composed cornice and enriched frize, the sides of stucco in pannels, stucco dado, and deal base and surbase mouldings, veined marble chimneypiece, architrave round, and the doors with enriched frize and cornice.

The Study.—A small enriched cornice and frize, the sides and dado of stucco, deal base and surbase mouldings, plain architrave and cornice to the doors, and veined marble chimneypiece and wood dressings.

The Cabinet.—A small enriched cornice, the sides and dado of stucco, with deal base and surbase mouldings; the four recesses to contain ornamental stands, one of which is intended to hold a stove, the rest to receive statues.

The Library to be fitted up with mahogany bookcases to the ceiling, plain statuary mantle and jamb chimneypieces, with wood dressings.

The Staircase.—An Ionic cornice and enriched frize, the sides stuccoed, the steps stone, 3 feet 9 inches out of the wall, with iron work of straight bars, intermixed with composition ornaments; the floor to be paved the same as in the vestibule.

The Front is designed to be of brick and stone, the walls brickwork, the columns entablature pediments, door-case strings and cells to be of stone, together with the cornice and entablature to the wings; the basement and steps, with pedestals on each side, to be of stone.

P L A T E X I V .

Contains the basement, ground plan, and principal elevations.—The basement plan contains steward's room, housekeeper's and butler's rooms, kitchen, scullery, larder and pantry, servants' hall, footman's rooms, laundry and washhouse, with cellars, &c. The height of this story is 11 feet, which is intended to be finished in the manner before described for apartments of this description.

The ground or principal plan contains a vestibule, anti-room, drawing-room, eating

eating parlour, breakfast room and library, dressing room and anti-room; with a principal and back staircase. The height of this floor is 14 feet.

The Vestibule.—A stucco Doric entablature and ornamented frieze; the sides and dado to be of stucco; deal base and furbace plain mouldings. The niches are intended to receive figures or vases, and the floor to be laid with Portland stone in squares.

The Anti-Room.—A plain composed plaster cornice, and frieze; the sides stucco, and formed in raised pannels; deal base and furbace moulding, and stucco dado; a veined marble chimney-piece, and enriched frieze.

The Drawing Room.—A rich Corinthian cornice; the sides of the room framed, and formed in pannels with pilasters of wood fluted and cabled; the pannels painted in arabesque ornaments, in the style of those painted by Raphael in the Vatican: deal base and furbace mouldings; the dado framed flush; the chimney-piece of statuary marble, with pilasters, and enriched frieze and tablet; stucco ornament ceiling, formed in pannels, to contain rich foliage ornaments and paintings; the doors to have rich architraves and entablatures; pannels over the doors to contain paintings, in chiaro oscuro, of boys, &c.; the doors eight pannels, moulded and sunk, with ornaments painted in the pannels. The moulding and enrichments to this room are intended to be partly gilt.

The Eating Room.—An enriched composed entablature, with ornamented frieze composed of ox skulls, fruit, and leafage; the ceiling formed in pannels, with foliage ornaments; the sides of the room stucco, in pannels, with stucco dado; deal base and furbace mouldings; the pannels over the doors to contain pictures; statuary marble chimney-piece, with columns supporting an Ionic rich entablature, with fruit and flowers in frieze, and tablet carved, representing a sacrifice; the dressing to the doors plain architrave and trusses, with enriched frieze, and doors of eight pannels sunk and moulded.

The Breakfast Room.—Small architrave cornice and enriched frieze; the sides of stucco; framed dado, and deal base and furbace mouldings; veined marble chimney-piece; doors, in eight pannels, moulded and sunk, with an architrave and cornice.

The Library.—An ornamented ceiling in stucco, with an allegorical painting in the center, to be surrounded by small circles of the heads of the Greek and Roman poets, enriched by festoons of leafage, &c.; the cornice to form a cap to the bookcases, with which the room is intended to be lined, and fitted up with mahogany; small base and furbace moulding; the dado framed in pannels, forming doors for print drawers, folio books, &c.; the two recessed niches, with Ionic column and entablature, enriched in the center, and ornamental stoves on pedestals.

The Dressing Room. — A small architrave cornice, and plain ceiling; the sides to be prepared for paper; a stucco dado; deal base and furbase mouldings.

The Anti-Room. — A plain ceiling, small architrave cornice, the sides of stucco, deal base and furbase mouldings, and stucco dado. All the floors, except the vestibule and staircase, to be common straight-joint yellow deal.

The Principal Staircase. — The upper part finished with spandrils and enriched pannels; a composed entablature, enriched; the sides stucco, and ornamented as displayed in the section; the steps of stone, 3 feet 9 inches out of the wall, with iron work enriched with composition ornaments; a moulded mahogany handrail; and the floor laid with Portland stone in squares.

The Back Stairs. — Small architrave cornice, and sides stucco to the skirting; the stairs of yellow deal, and moulded nosings, common wood ballusters and handrail; the floor common straight-joint yellow deal.

The Sleeping Rooms are proposed to have the same mode of finishing as has been described in former designs.

The Front is intended to be of brick; the colonade, cornices, strings, and ballusters, with window cells, to be of stone, together with the doorcase, &c. The center building and wings are to be slated.

P L A T E X V .

The section taken from A to B, on the ground plan, discovers the mode of decorating those apartments through which it is taken.

P L A T E X V I .

Contains the principal plan, bedchamber floor, and principal elevation. The basement floor occupies the offices.

The Principal Plan contains a drawing room, eating parlour, anti-room, breakfast, library, and dressing rooms. The height of this story is 13 feet. The wings are intended to serve as greenhouses.

Nearly the same mode of finishing may be employed as described in the ground plan of Plate XIX.

The Bedchamber Floor contains six sleeping rooms, with dressing rooms, closets, bath, &c. The height of this floor is 11 feet.

The

The room A is intended to have a small architrave cornice, the sides prepared for paper to a torus skirting, and veined marble mantle and jamb chimney-piece, with wood dressings.

The room B is a circular Bedchamber, enriched with three-quarter columns fluted, which are intended to support a rich cornice of the Ionic order and ornamented frieze; the sides hung with linen in panels, surrounded by a broad border; the dado framed flush, with a moulded base and furbase; the chimney-piece of statuary marble, with enriched frieze and tablet.

The room C has an enriched cornice and frieze; the sides framed in panels, with enriched base and furbase mouldings. The end, where the bed is intended to be placed, to be finished as an alcove, with festoon curtains, and to be raised above the floor 1 foot 6 inches. The chimney-piece statuary marble, mantle and jamb, with wood dressings.

The room D, in which the same mode of finishing may be employed as described in C.

The room E. An enriched cornice; the sides formed in panels, and hung with linen encircled by a carved frame; the dado framed flush; enriched base and furbase mouldings, and statuary marble chimney-piece, with ornamented sunk pilasters and foliage frieze.

The room F may be nearly finished as the foregoing one, with a variation only in the chimney-piece. The dressing rooms may have a small architrave cornice, their sides prepared for paper, a wood dado framed flush, moulded base and furbase round, with plain veined marble mantle and jamb chimney-pieces. The principal doors on this floor to be of eight panels raised; the frieze panel to be ornamented, and enriched by an entablature, with trusses, &c. Straight-joint yellow deal floors to this story.

Above this floor is contained, in a circular building, three sleeping rooms for servants, to be finished as described for rooms of this description.

The Basement is intended to contain the necessary offices required for such an edifice.

The Front is intended to be brick stuccoed, and covered with slate.

The Bow and Colnade of stone, with iron work over, enriched with composition ornaments.

P L A T E XVII.

Contains a basement, principal floor, and elevation. The ground plan consists of an hall, eating room, drawing room, anti-room, vestibule, library, and music room. The height of this story is 18 feet.

A trifling variation only may be necessary in respect to the general mode of finishing from this design; and enrichments, either in sculpture or painting, may be varied suitable to the purposes of the rooms, and decorated accordingly.

The Basement also may partake of the same mode of finishing proposed in the former designs.

P L A T E XVIII.

Contains the section of the foregoing design, taken from A to B on the ground plan.

The front and wing walls are intended to be of stone; the roof covered with slate

P L A T E XIX.

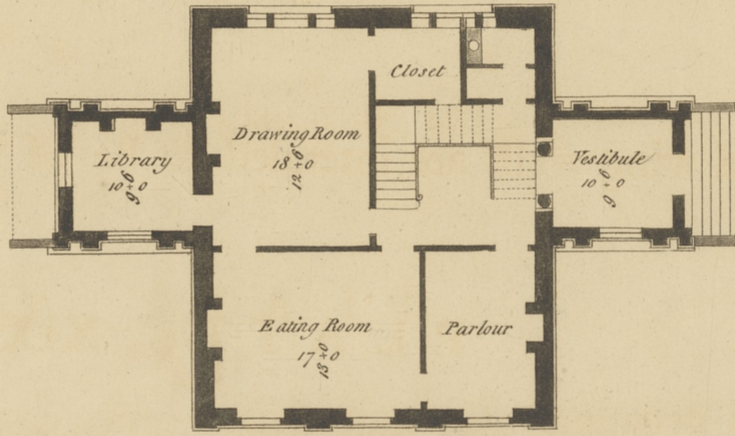
Contains a principal plan and front. The ground floor consists of a vestibule, eating and anti-room, drawing room, music room, and library; with housekeeper's, steward's, and butler's rooms, which occupy the center buildings, and are in height 14 feet.

One wing contains the kitchen, scullery, still room, pantry, larder, servants' hall, and footman's rooms; with the servants' sleeping rooms above. The other wing contains the stables, coach houses, harness room, and other necessary conveniences. Above are sleeping rooms for the stable servants, with loft and store rooms.

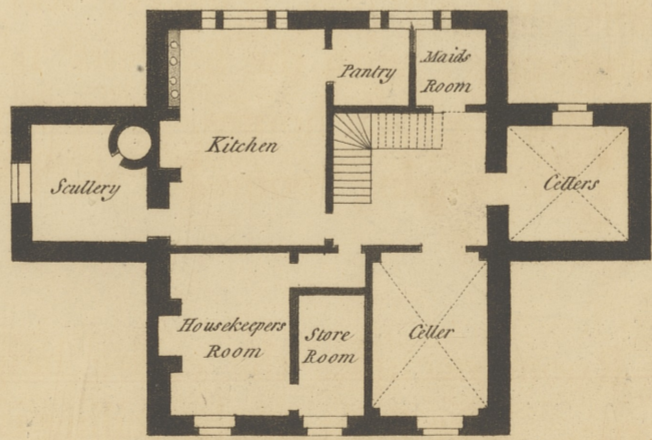
The Drawing Room occupies the entire height of the center building, and finishes with a dome. The soffit of the ceiling is intended to be enriched with ornaments in arabesque, and worked in stucco; an enriched Corinthian entablature, the frieze composed of fruit and leafage in stucco. Above the cornice, at the commencement of the dome, the whole area is intended to be divided, and distinguished with four separate compositions, in alto relievo, of figures, &c., representing the Seasons, accompanied with boys and festoons of flowers, &c.; and on the same plain, the signs of the Zodiac painted in oil. The door to be eight panels, and to contain arabesque ornaments. In the center of the dome is a skylight, encircled by a panel, with ornaments in stucco, representing rays, with laurel
leaves



FRONT



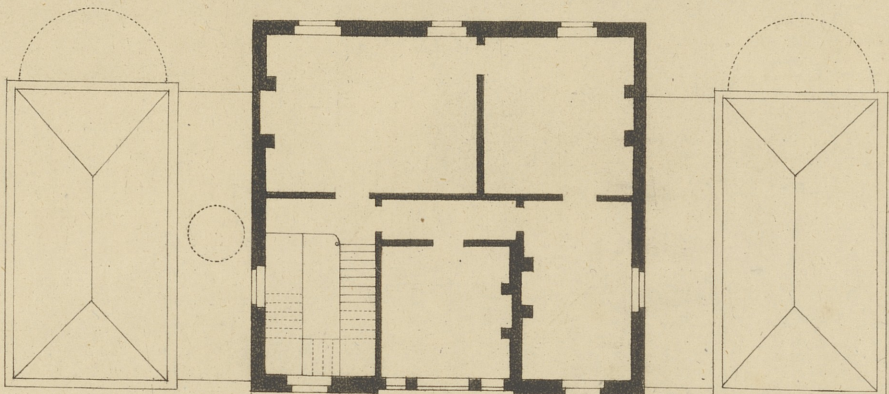
GROUND PLAN



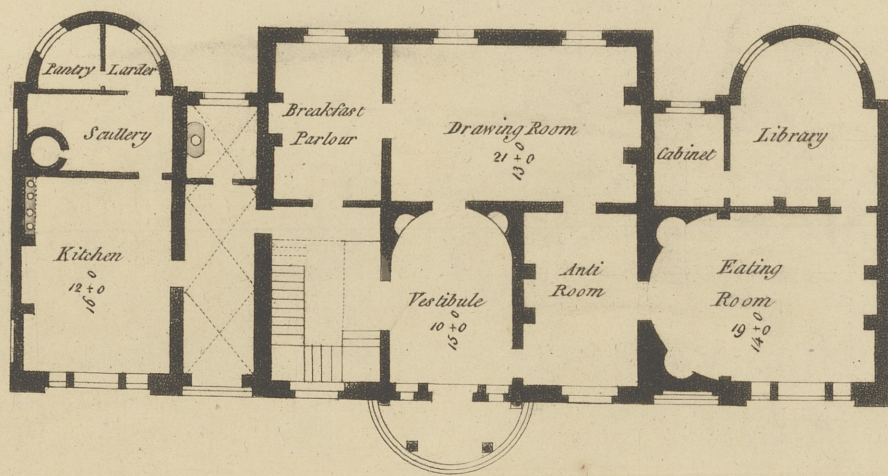
BASEMENT PLAN



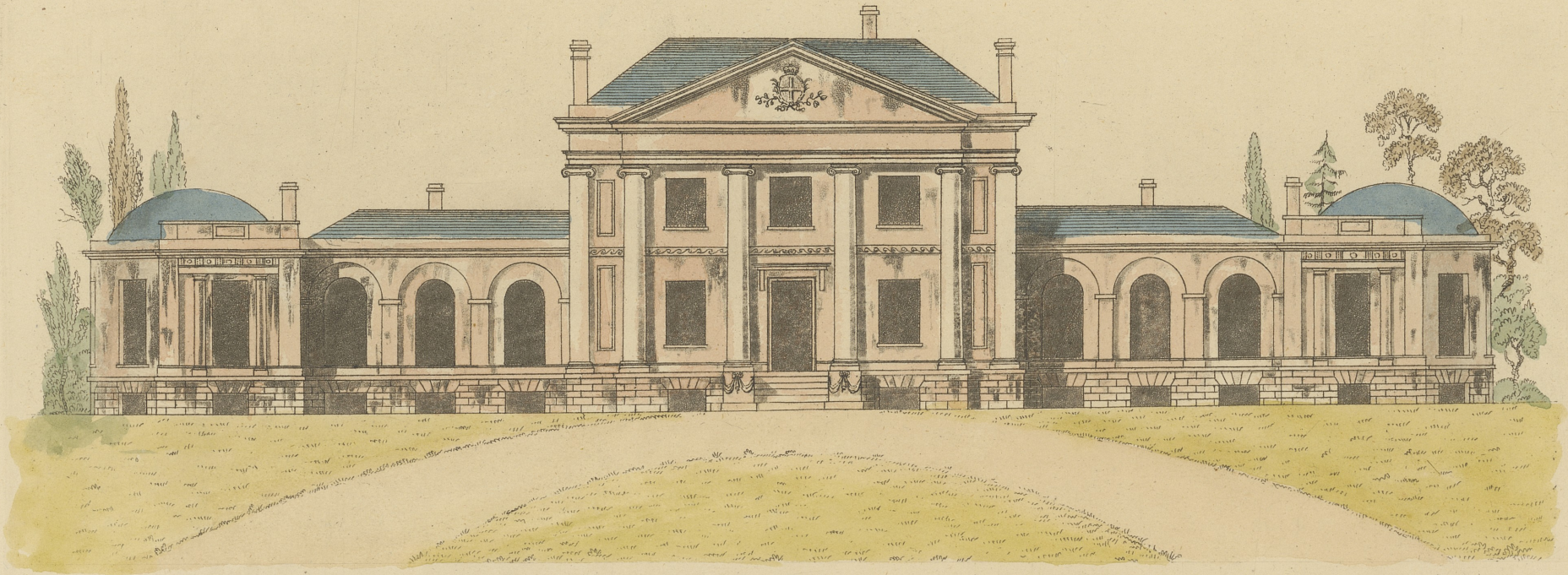
FRONT



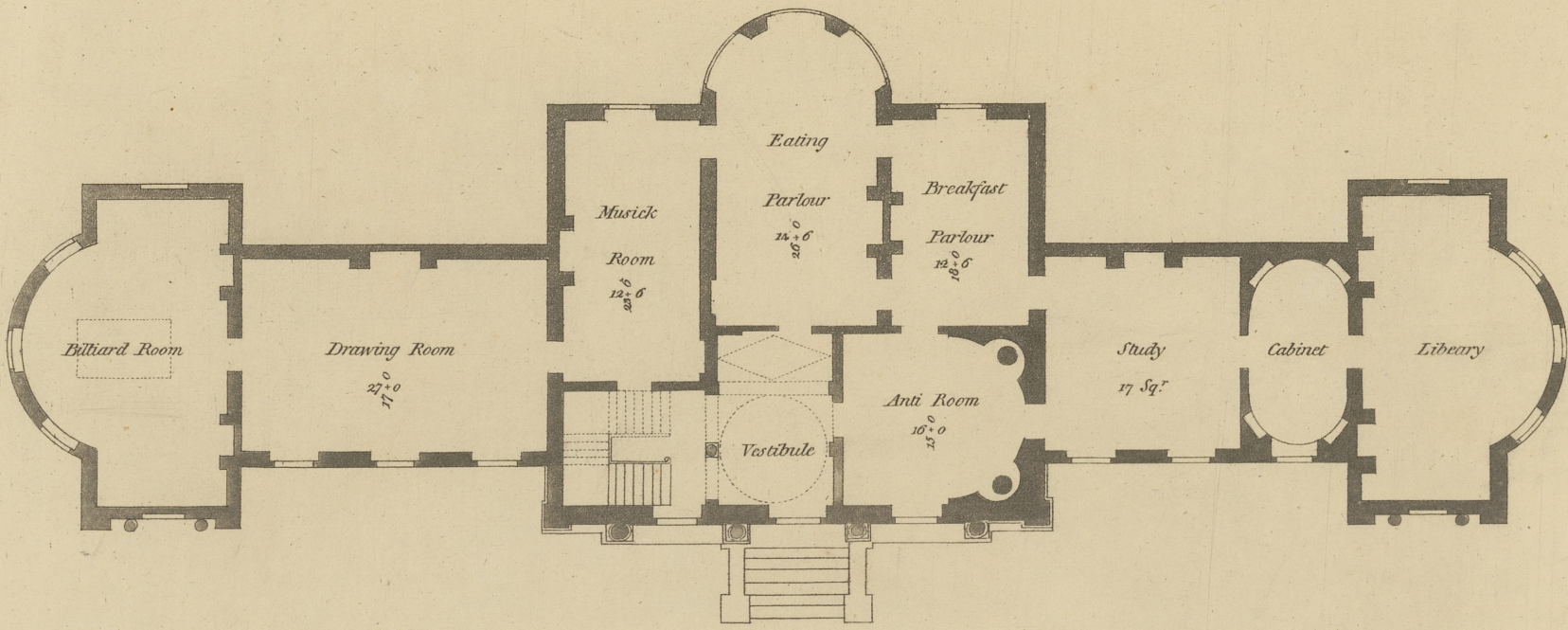
BED CHAMBER PLAN



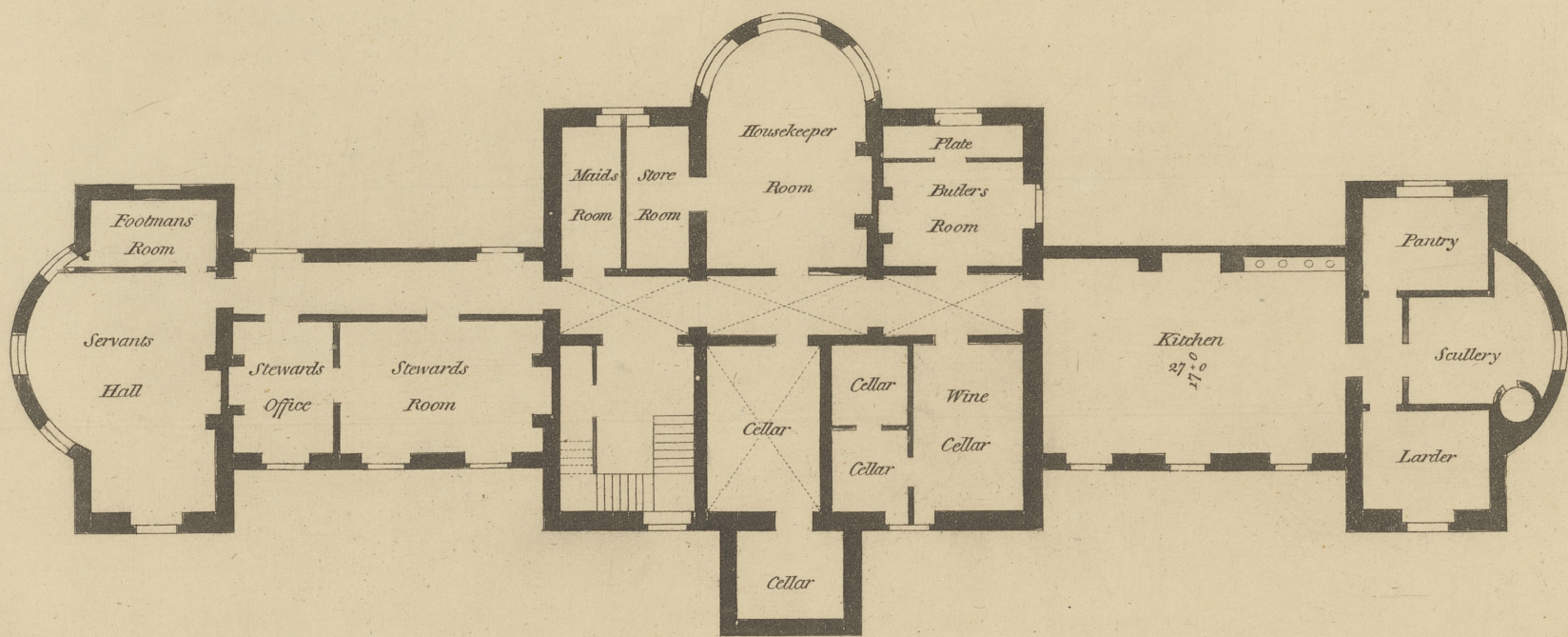
GROUND PLAN



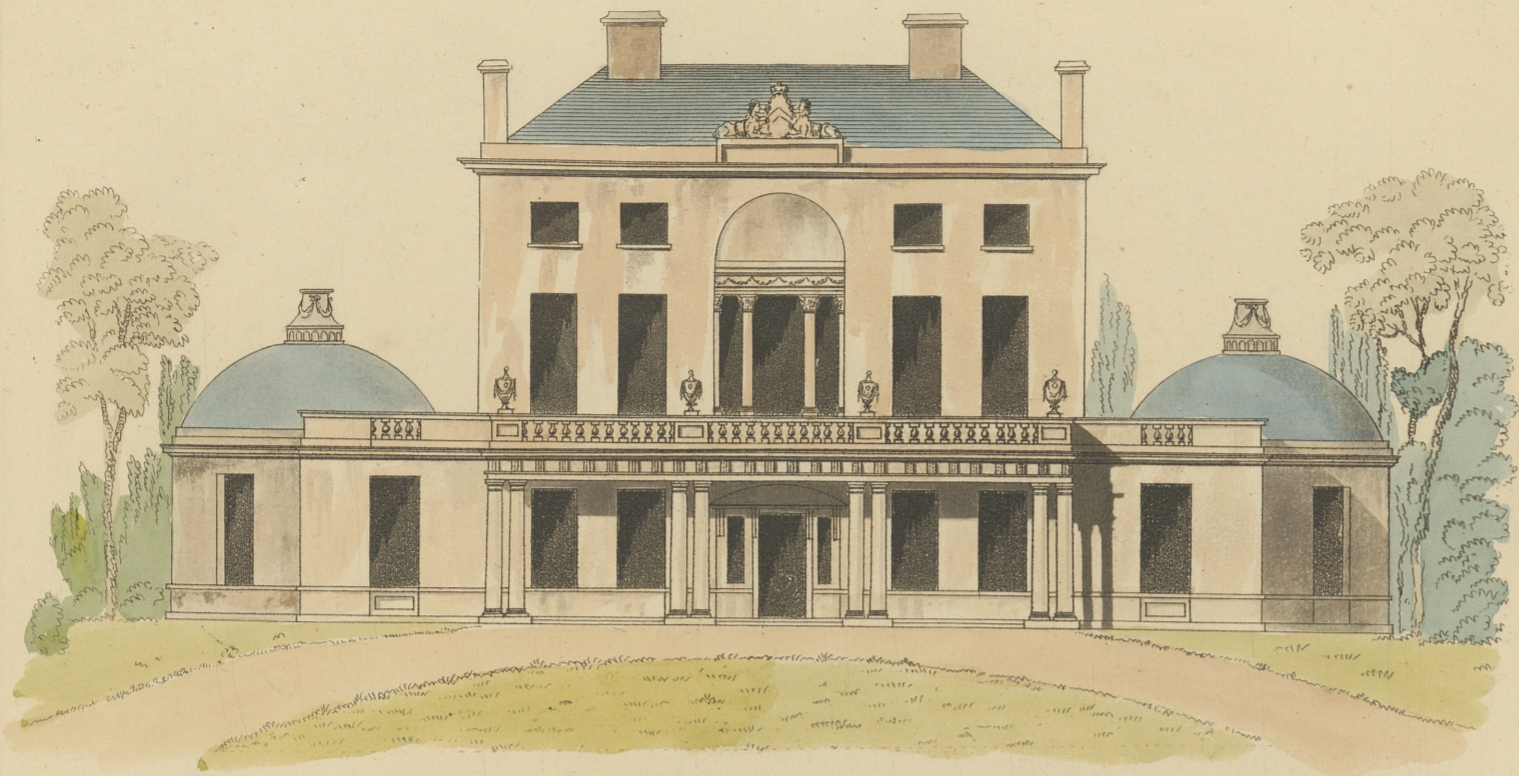
ELEVATION



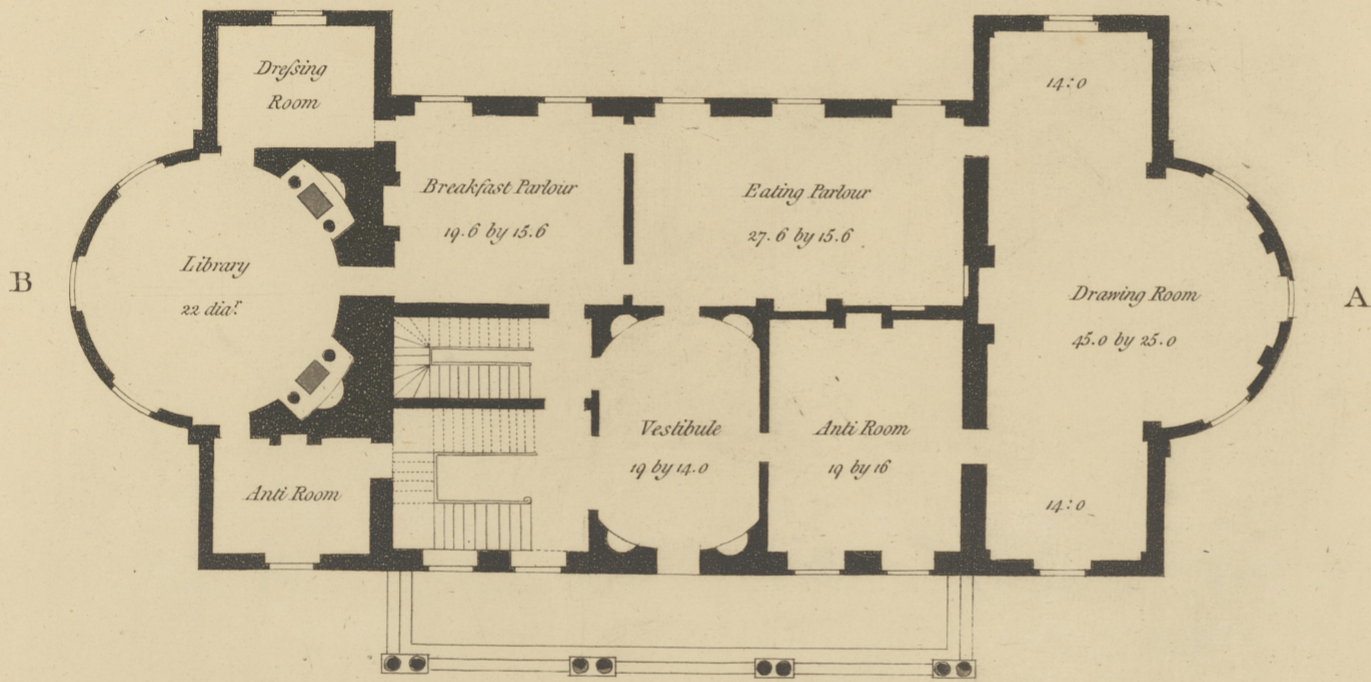
GROUND PLAN



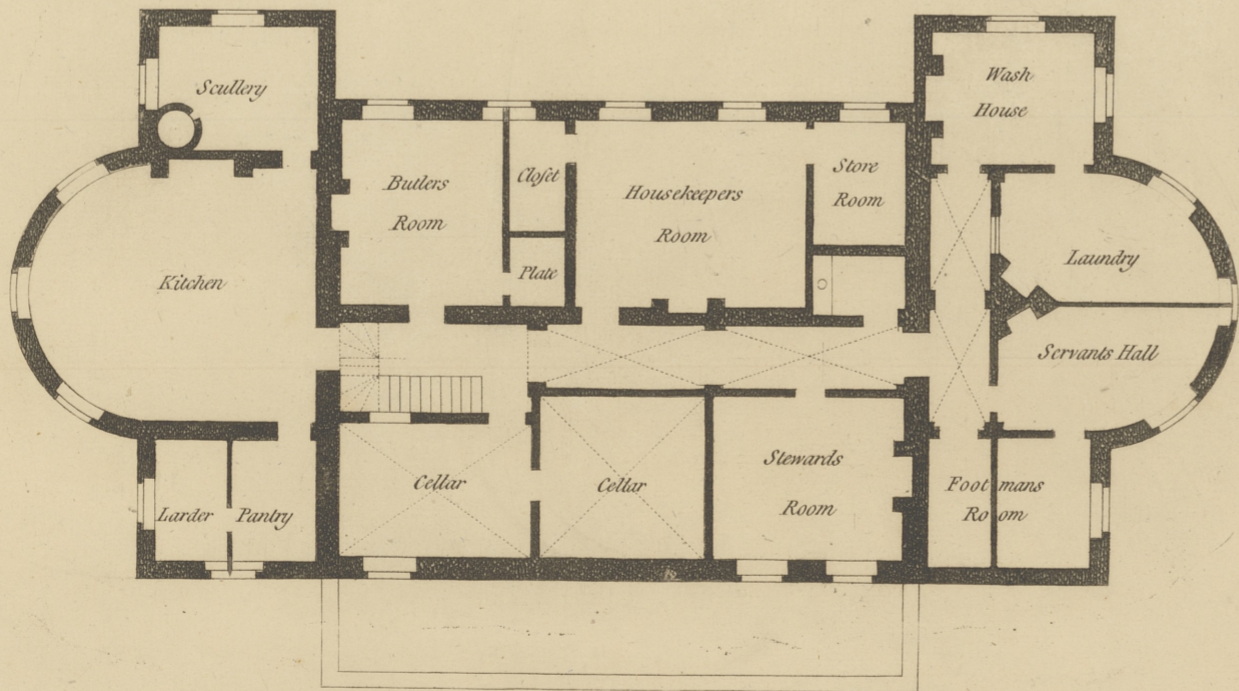
BASEMENT



ELEVATION

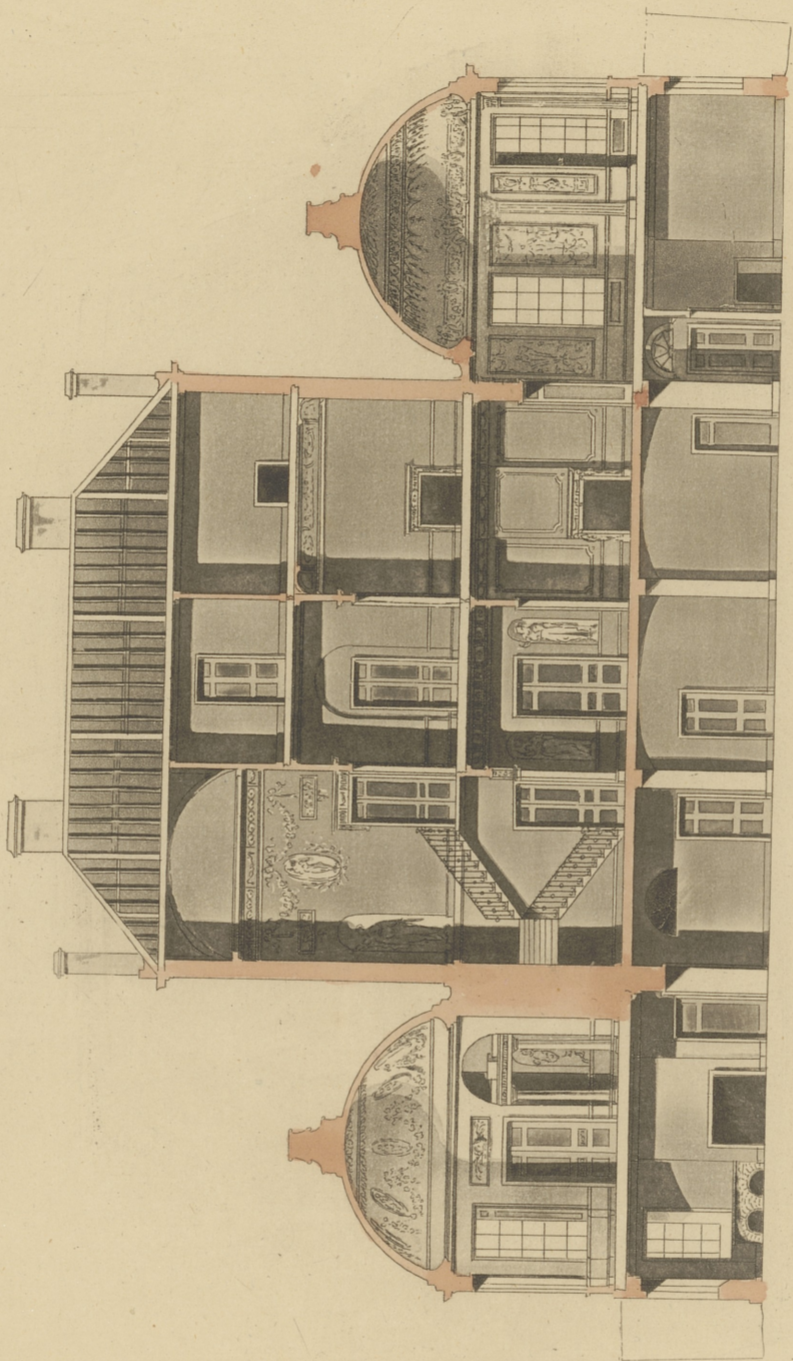


GROUND PLAN



BASEMENT

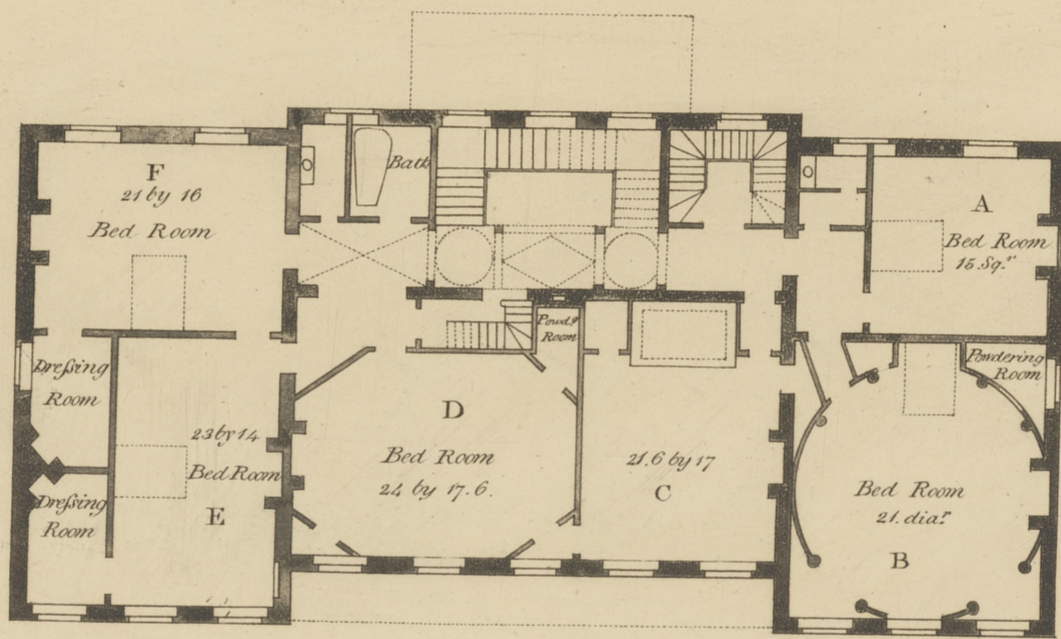
PL XV.



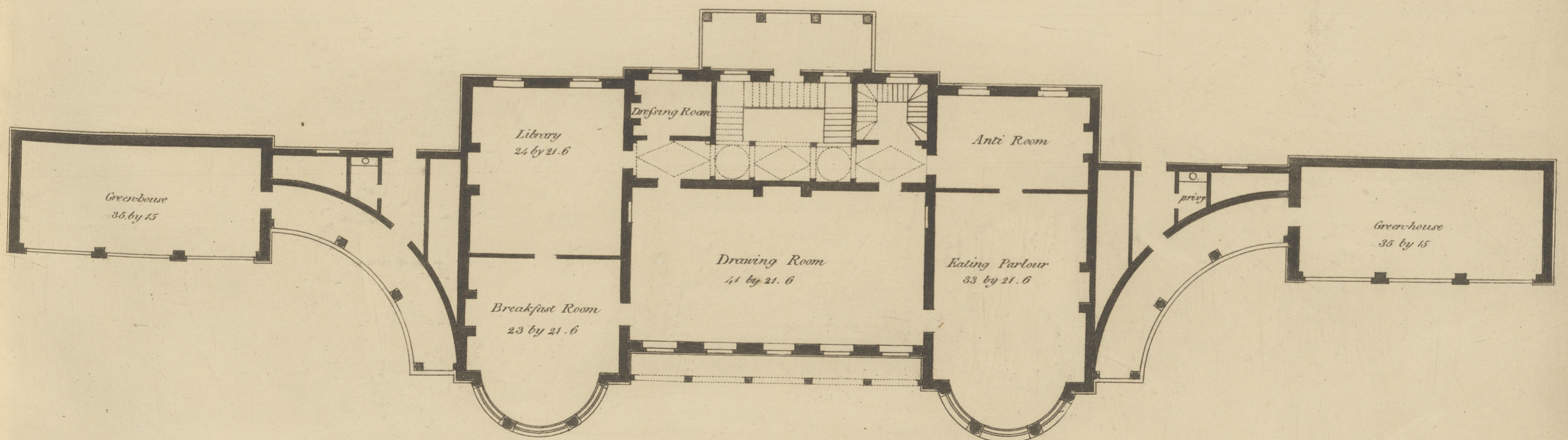
SECTION from A to B on PLAN.



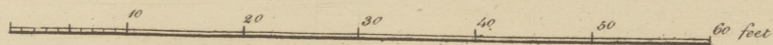
ELEVATION



BED CHAMBER PLAN

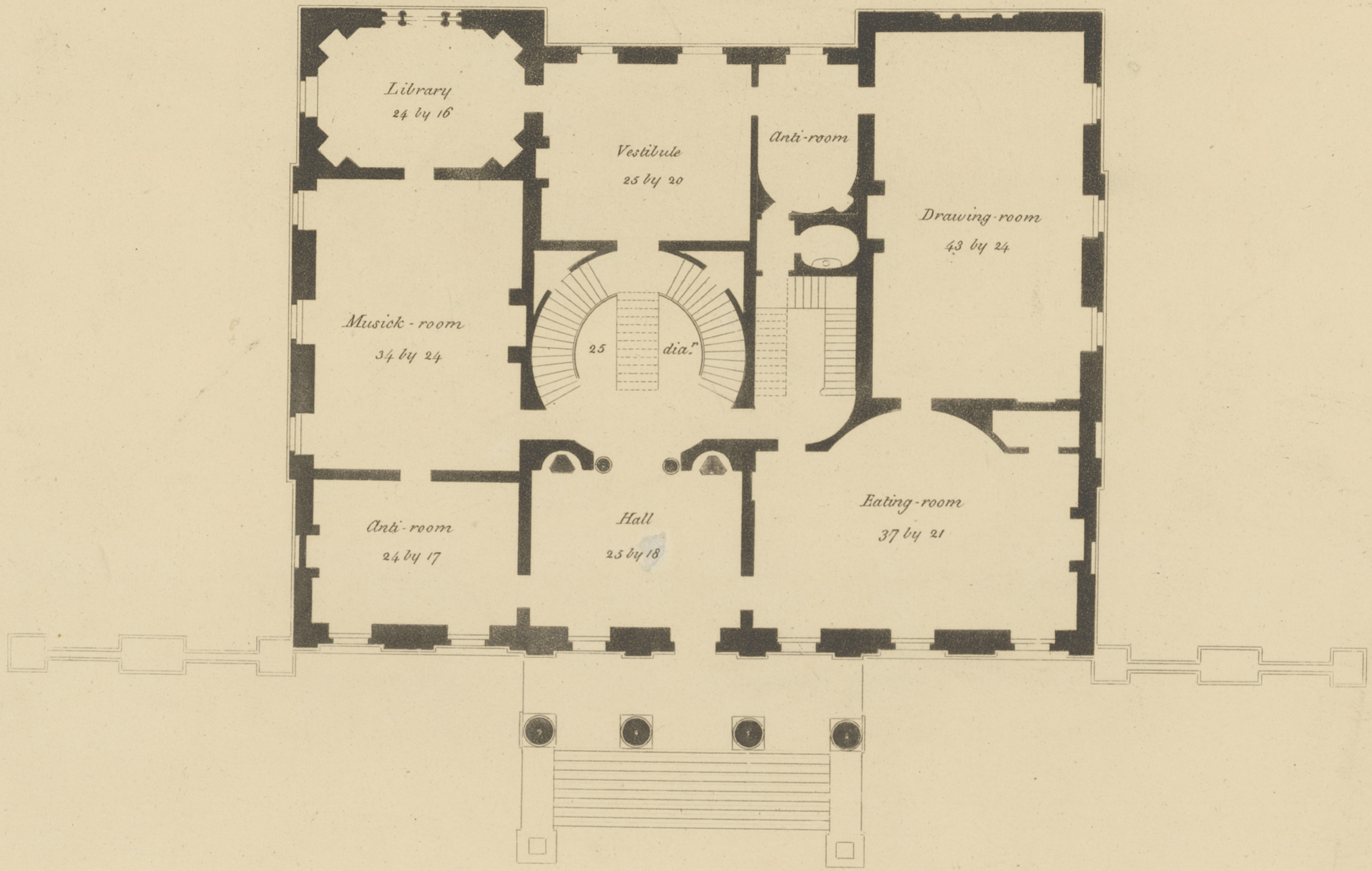


GROUND PLAN

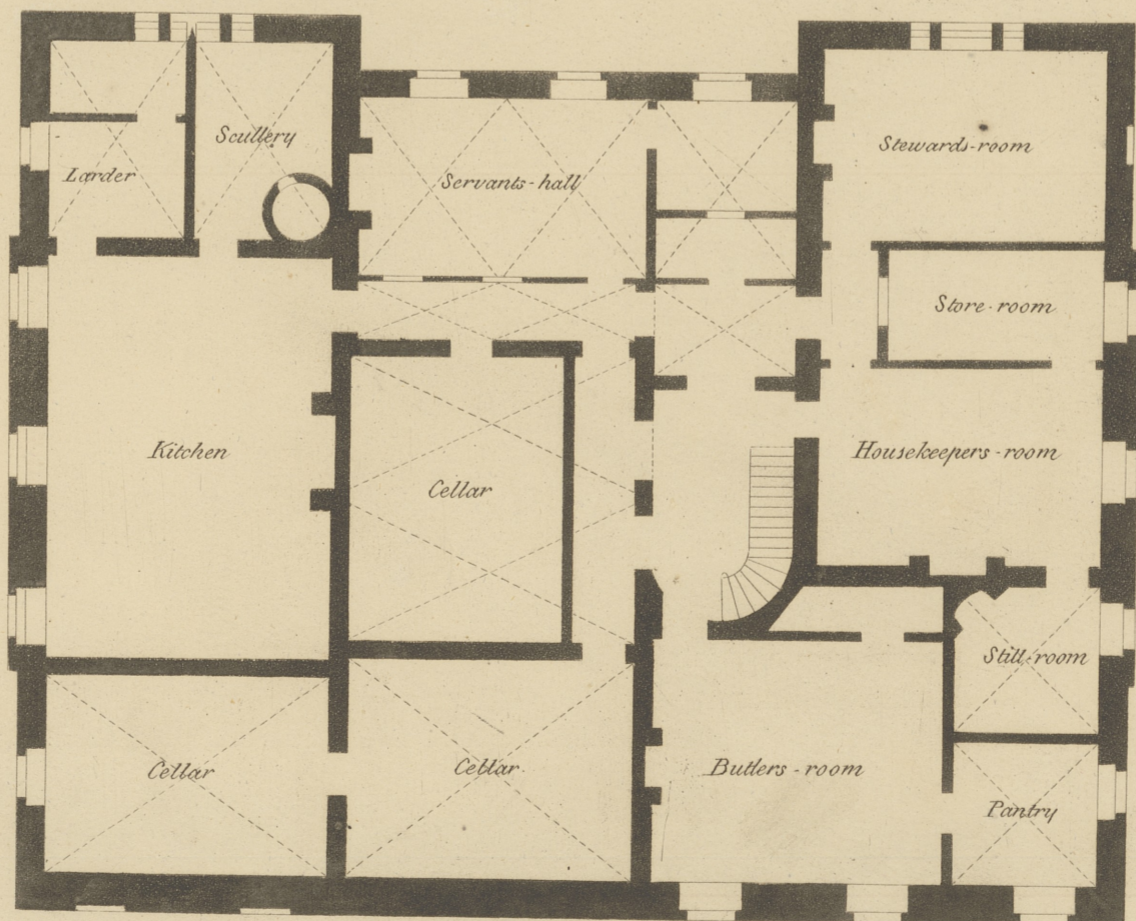




ELEVATION

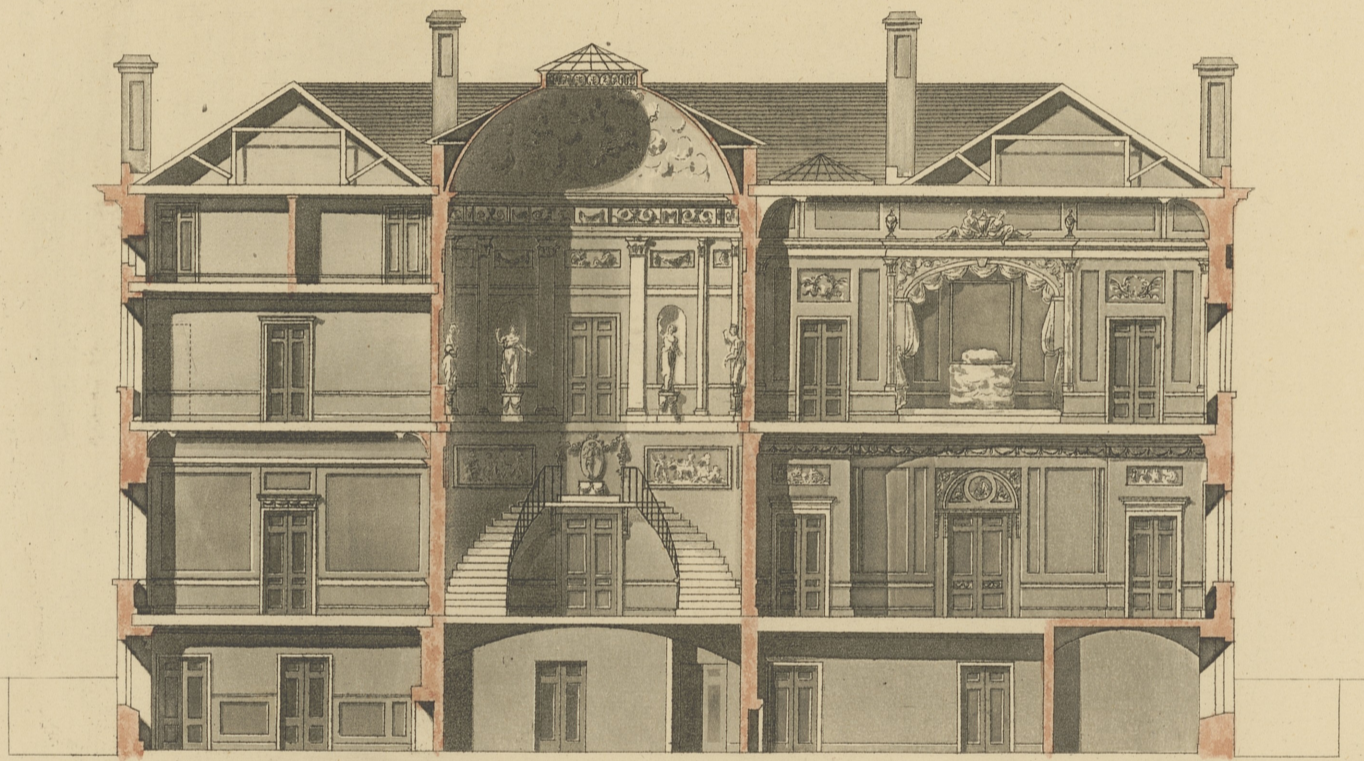


GROUND PLAN

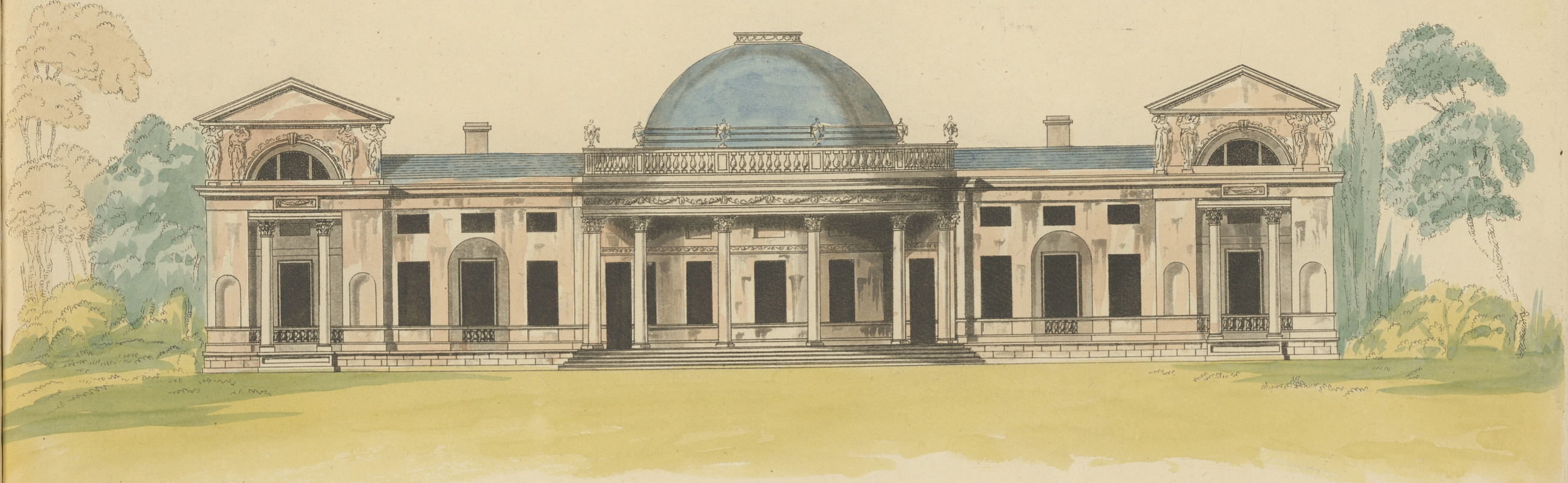


BASEMENT

P. XVIII



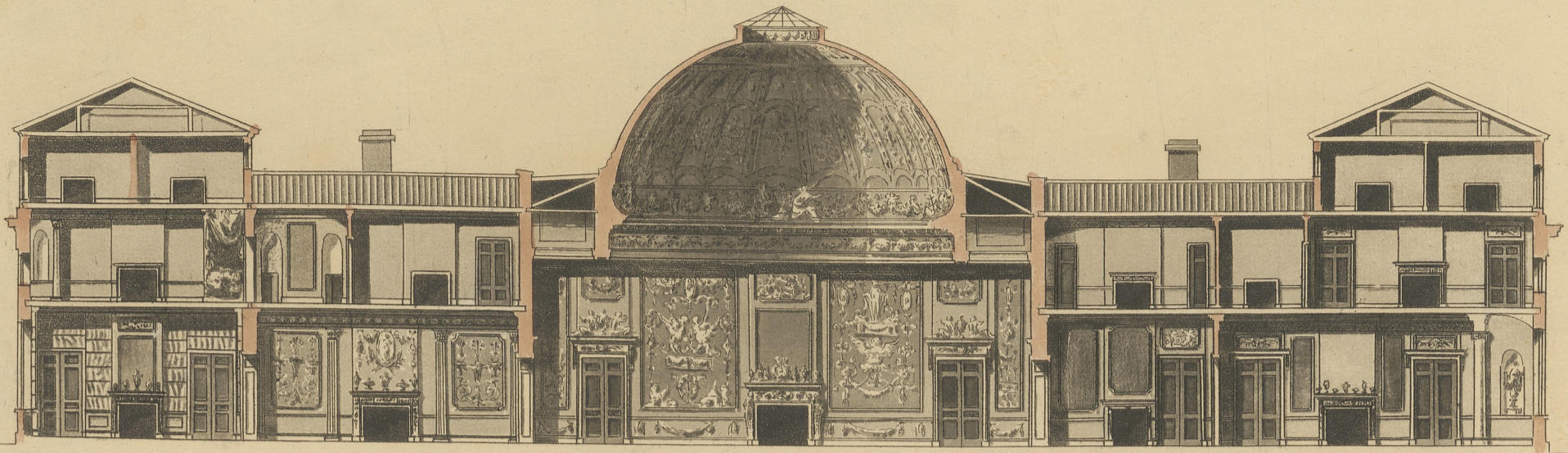
SECTION from A to B on PLAN .



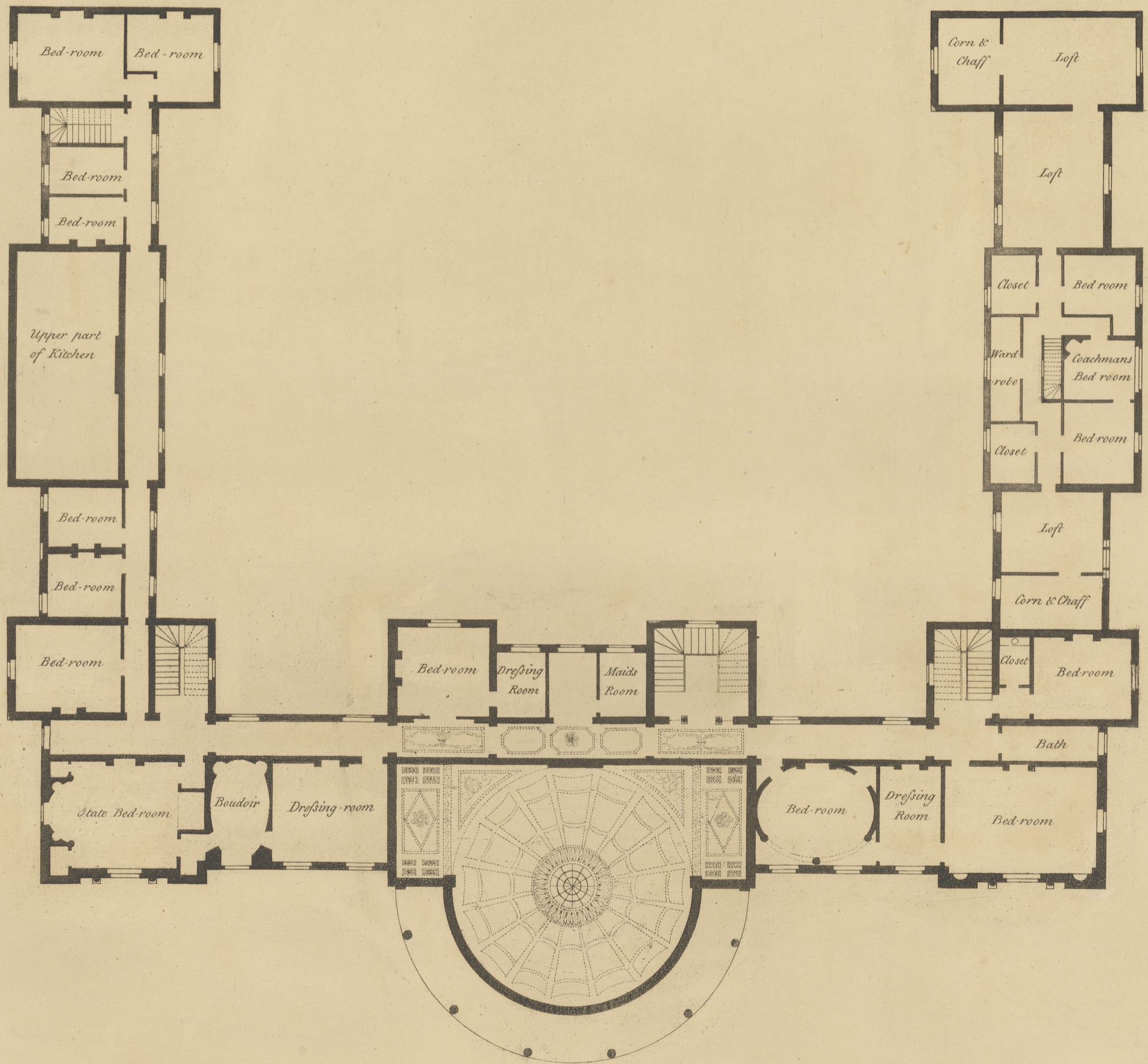
ELEVATION



GROUND PLAN



SECTION



BED CHAMBER PLAN