

F A R M - H O U S E S

MUST necessarily vary, in some degree, according to the nature of the farm to which they belong, whether grazing, arable, &c., &c.; but as the variation principally relates to out-houses, one general plan of a dwelling house may be, in a great measure, applicable to them all.—The rooms usually required in a farmhouse are, a best and common parlour, kitchen, pantry, scullery, and store room, with the necessary lodging rooms; all of which should be finished in a plain and simple manner. The dairy, scalding-room, brew-house, bake-house, and wash-house, are generally considered as offices.

P L A T E IV.

Contains the designs for the plans and elevations of a small farm-house, intended to be erected of brick and covered with slate. The ground plan contains a best and common parlour, kitchen, pantry, store-room, dairy, and scalding-room. The sides of the best parlour to be plastered to surbase, with small architrave cornice, and plain base and surbase moulding; veined marble chimney-piece; six-pannel doors; deal sashes, glazed with second-best crown glass and plain architrave to windows, with shutters to ditto; common straight-joint yellow deal floors. The sides of the common parlour to be plastered down to the skirting; Portland chimney-piece; the doors and windows finished as the best parlour, with common floor, &c. The kitchen to be plastered to the skirting; Portland chimney-piece; common four-pannel doors and windows in quarries; the floor, with the pantry, store room, dairy, scalding room, and the passages, to be paved with brick, and finished in the same manner as the kitchen: the height of this story is 12 feet; the stairs common yellow deal, with square balusters; the sides of the staircase to be plastered to a toras skirting. The upper floor contains four bed rooms and a closet: the rooms on this floor to be plastered down to a skirting; common floors; six-pannel doors; the sashes in front of the building common glass, and in the back front glazed with quarries: the height of these rooms is 10 feet.

P L A T E V.

Contains the plans and elevation of a farm-house and offices: the ground plan contains a best and common parlour, with store-room and closet; in the wings are the wash-house and laundry; store-room, dairy, and scalding-room, scullery, pantry,

pantry, bake-house, and brew-house. The rooms in the house are intended to be finished in the same manner as in the design, Plate IV. The sides of the several rooms in the wings are intended to be plastered down to a skirting, the floors paved with brick, and windows in quarries: on the bed-chamber and attic stories are twelve sleeping rooms, which are intended to be finished in the same manner as described in plate IV. This building is intended to be erected of brick and stone, and the roof covered with slate.

P L A T E VI.

Is the section taken from A to B on the ground plan, and displays the manner in which it is proposed to finish the several rooms.

P L A T E VII.

Offers a general plan of a farm-house and yard, drawn on a smaller scale than the former designs; the whole is so formed as to answer the several purposes required in a building of this description, being intended as a general farm, and the several parts so connected and disposed as to answer every necessary purpose. The house contains a best and common parlour, with store-room, two kitchens, pantry, and scullery, dairy and scalding-room; the house and offices are proposed to be finished in the manner intended for the design, Plate IV.—The farm-yard is divided into three distinct buildings: that to the left of the entrance, A, contains the stables, cart-house, and shed for farming implements. The building, forming a wing, and adjacent to the house, is intended for a brew-house; the one answering to this, at the other end of the stables, is a straw and harness room: over the cart-house, &c., is an extensive store-room for straw, chaff, &c.; and in the roof, over the stables, are the hay-lofts. The building on the opposite side of the yard, at B, is the principal barn, on each side of which are the cow-houses and weaning-sheds: at the end of the yard, and fronting the house, at C, is a second barn, on each side of which are the hogsties, which are intended to be connected with the other buildings by a close paleing, with common five-barred gates in the center: adjoining to them are two dung-pits, so situated as to be emptied without interfering with the business of the farm. In the center of the farm-yard is the poultry-house and yard, with scalding and store room; over which is the granary, that occupies the center building; and over the store and scalding room there may be separate granaries, to be connected by a gallery: they are designed to be partly enclosed with windows of lattice work, which will allow a free circulation of air, with inside shutters. In the center, and over the granary, is a dove-cot, an access to which may be obtained by a ladder from the former.

P L A T E VIII.

Contains the elevation of the farm-house and the several buildings in the farm-yard.

NUMBER I.

Is the front of the house and offices, with the brew-house and store-shed; between which are gates, forming an entrance to the farm-yard: the buildings are intended to be of brick, covered with slate and thatch: the rooms are intended to be finished as proposed in the former plans of this description.

NUMBER II.

Is the elevation of a barn and cow-houses, on each end of which are weaning-sheds for calves: in the roof of the cow-houses are hay-lofts, which are intended to be slated; the rest to be covered with thatch.

NUMBER III.

Is the front of a cart-house and stables; at the end is the brew-house, shed, and store-house; these are intended to be built of the same materials as before described.

NUMBER IV.

Is the elevation of the granary, scalding-shed, and store-room, the whole of which are intended to be built of quartering and brick noged; the roof to be covered with slate.

P L A T E IX.

A perspective elevation of the farm-house and yard, which offers a commanding view of the entire arrangement of the several buildings composing this design.

P L A T E X.

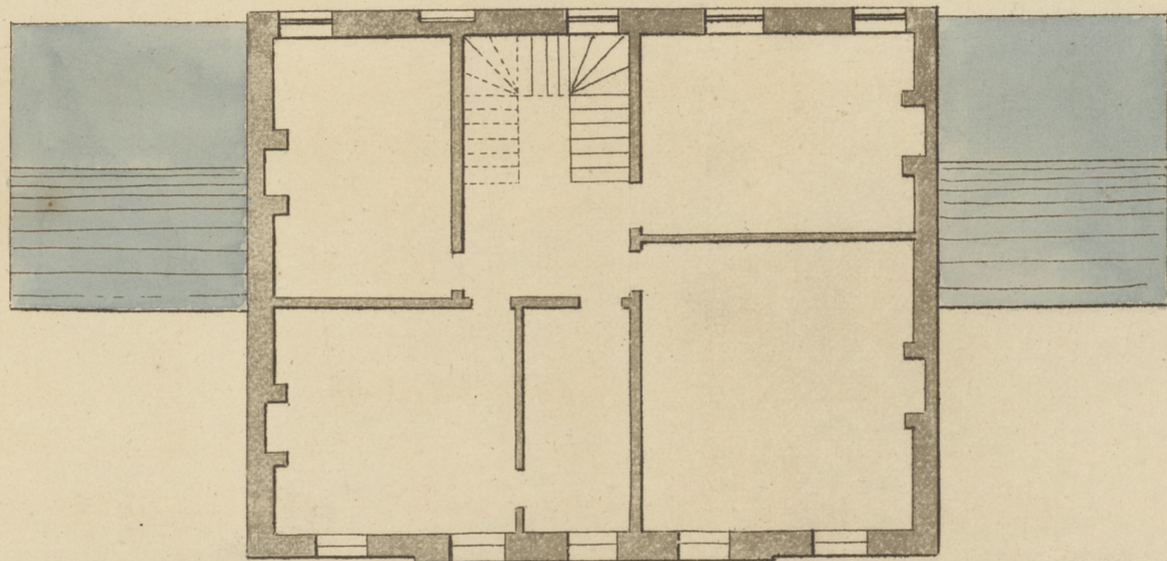
Contains two designs for the plans and fronts of small thatched dwellings, drawn on a scale, to accompany the general gradation to be observed in the country houses.

NUMBER

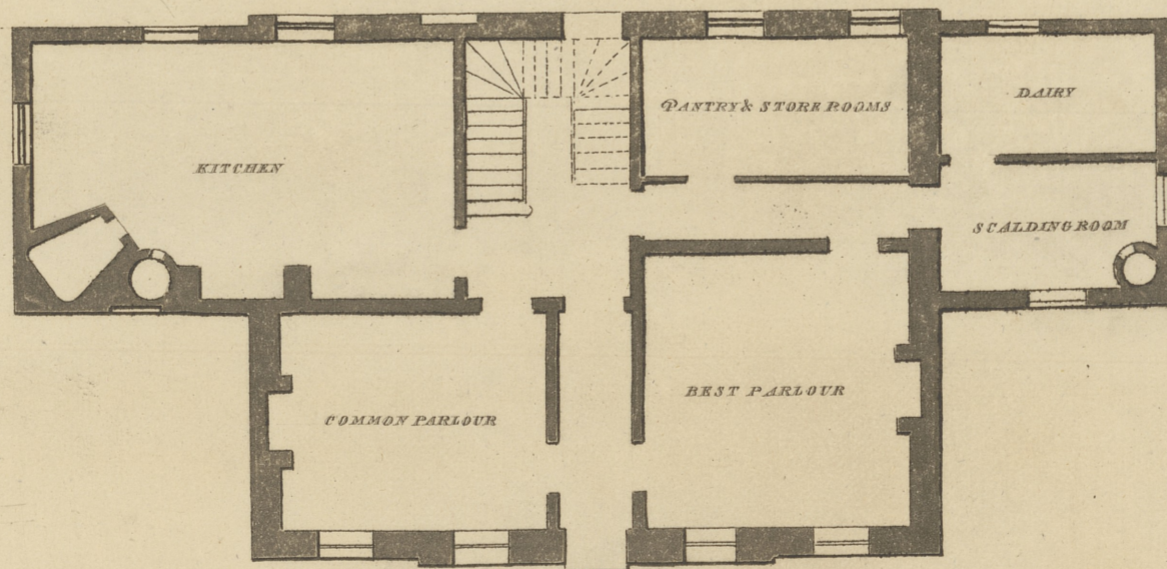
Pl. IV.



FRONT



BED CHAMBER PLAN



GROUND PLAN

NUMBER I.

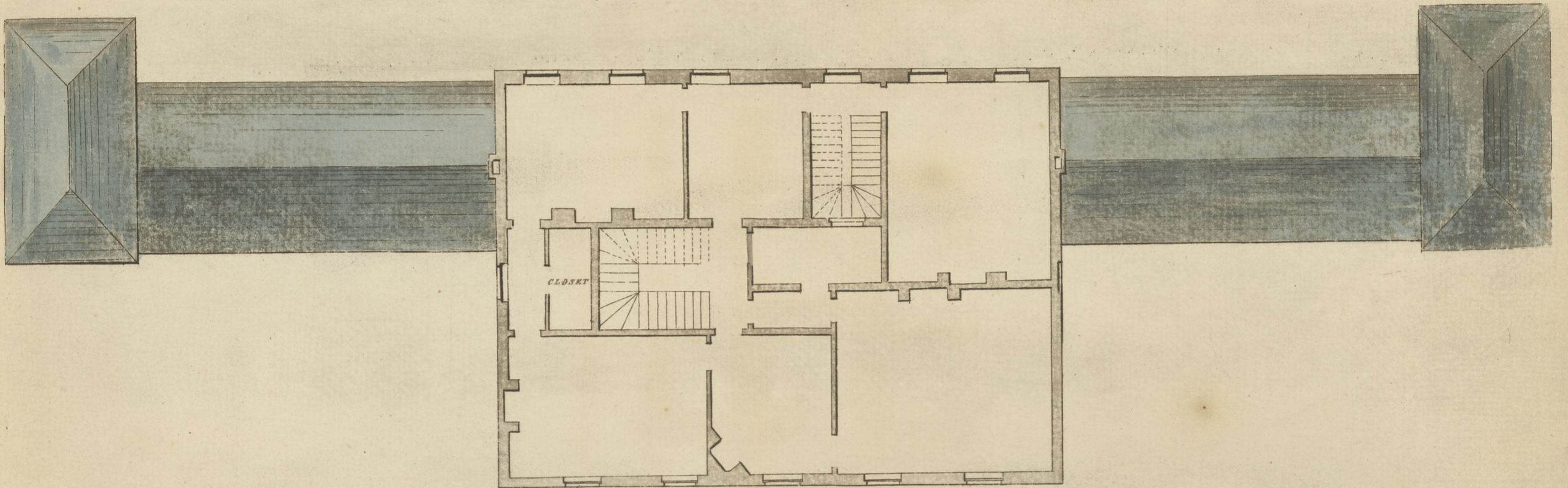
Is a house, containing, on the ground plan, a parlour and kitchen; the entrance to the house being from the side, admits the room in the front to occupy the whole extent.

NUMBER II.

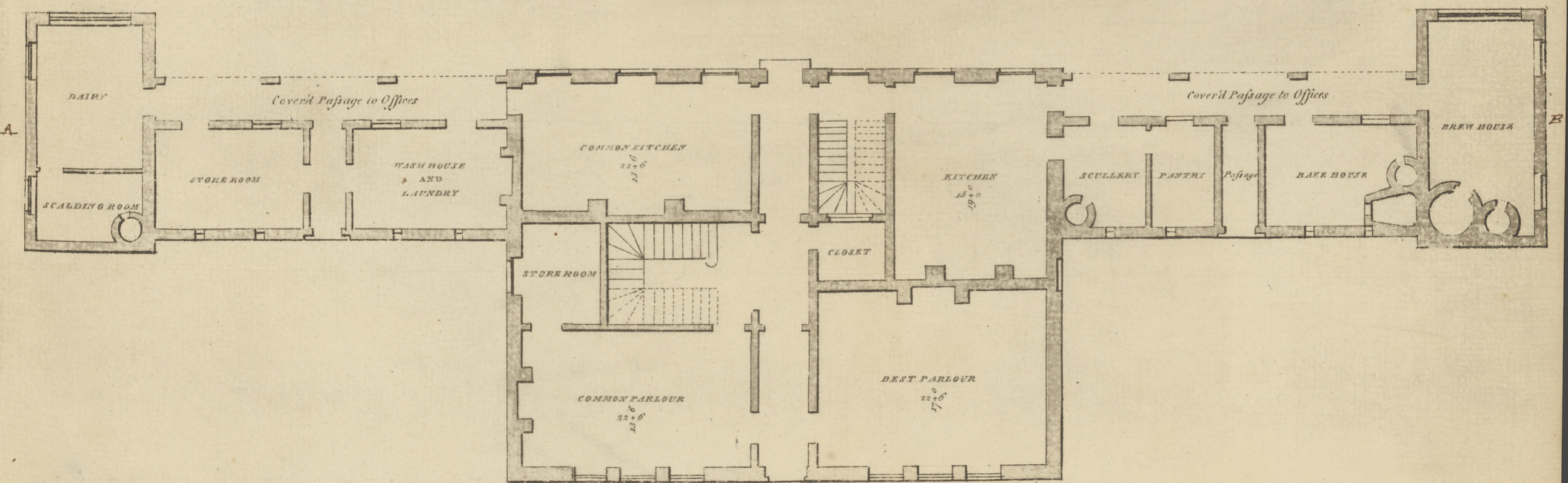
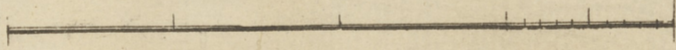
Is a plan on a larger scale; the ground floor consists of a parlour, store-room, and kitchen, with suitable chambers over them: the same mode of finishing may be employed as has been proposed for the farm-houses.



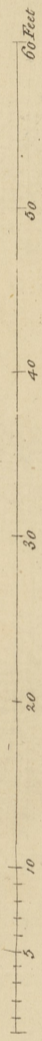
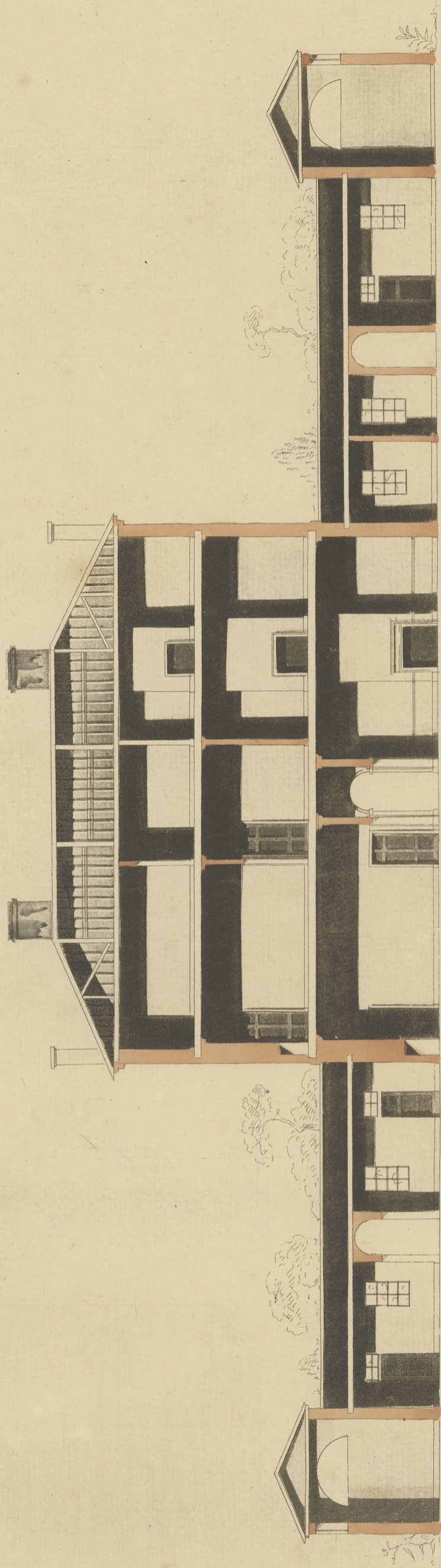
ELEVATION



BED CHAMBER PLAN



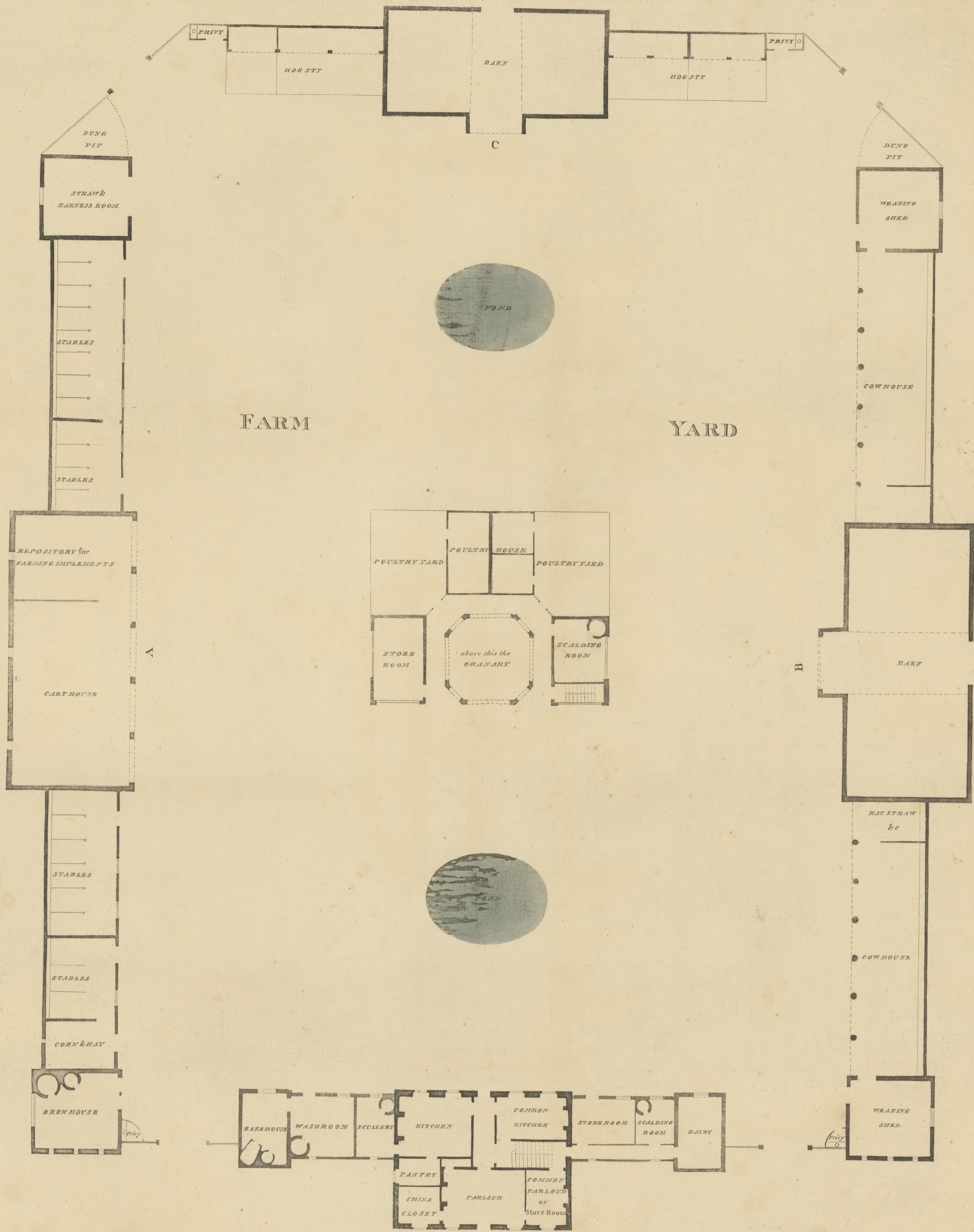
GROUND PLAN



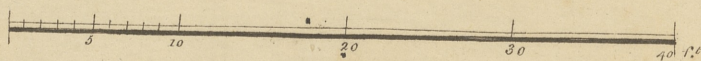
SECTION from A to B on GROUND PLAN.

Chas. Middleton Arch. et sculp.

Published according to Act of Parliament Aug. 20, 1790.



GENERAL PLAN OF A FARMHOUSE & YARD.





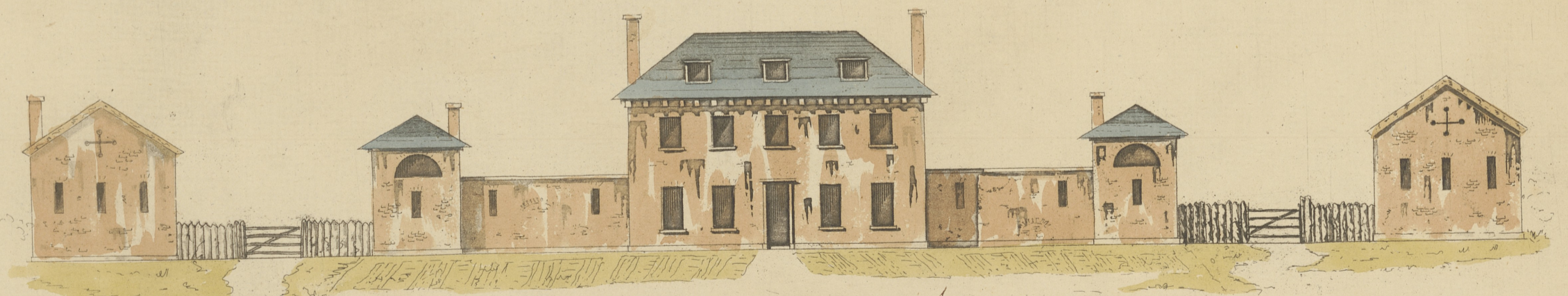
ELEVATION OF GRANARY &c. 4
E. ON PLAN.



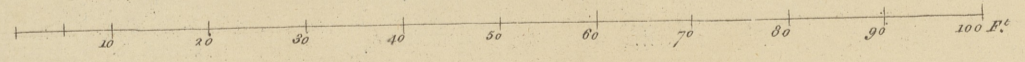
ELEVATION OF THE STABLES AND CARTHOUSE 3
D. ON PLAN.



ELEVATION OF COW HOUSE & BARN 2
C. ON PLAN.



ELEVATION OF THE FARM HOUSE & OFFICES 1
From A to B on PLAN.



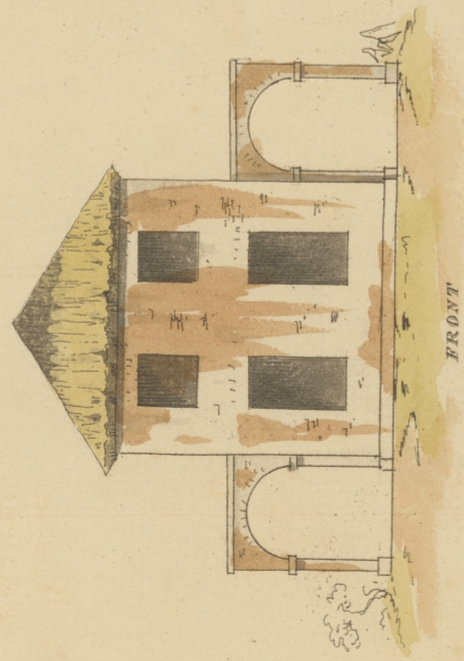
PERPECTIVE VIEW OF A FARM HOUSE & YARD.



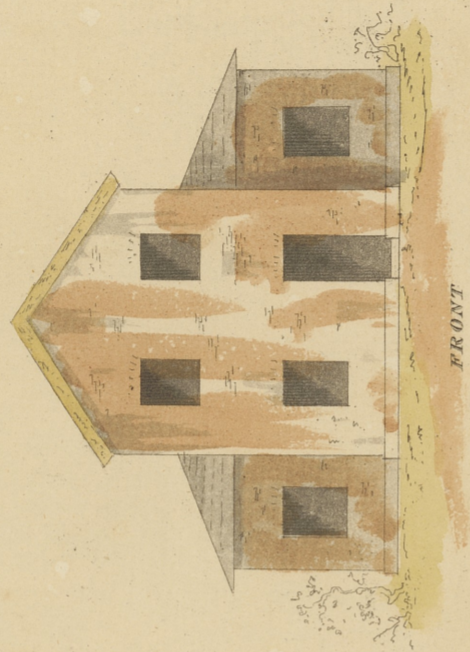
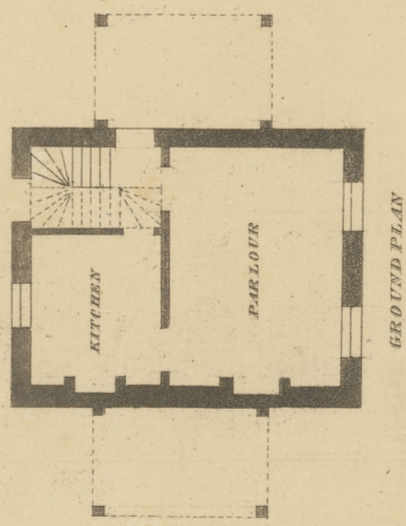
MS. P. 1790. According to Act of Parliament Aug. 20, 1790.

Chas. William Architects.

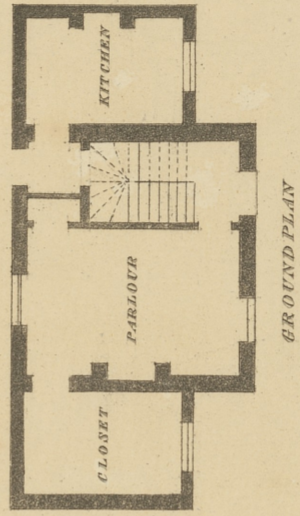
Plx.



No. 1.



No. 2.



Published according to Act of Parliament Aug. 20. 1790.

Cha. Middleton Arch. & Sculpt.