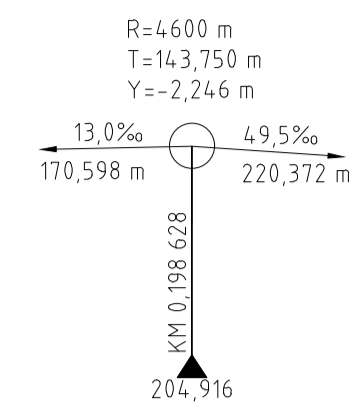
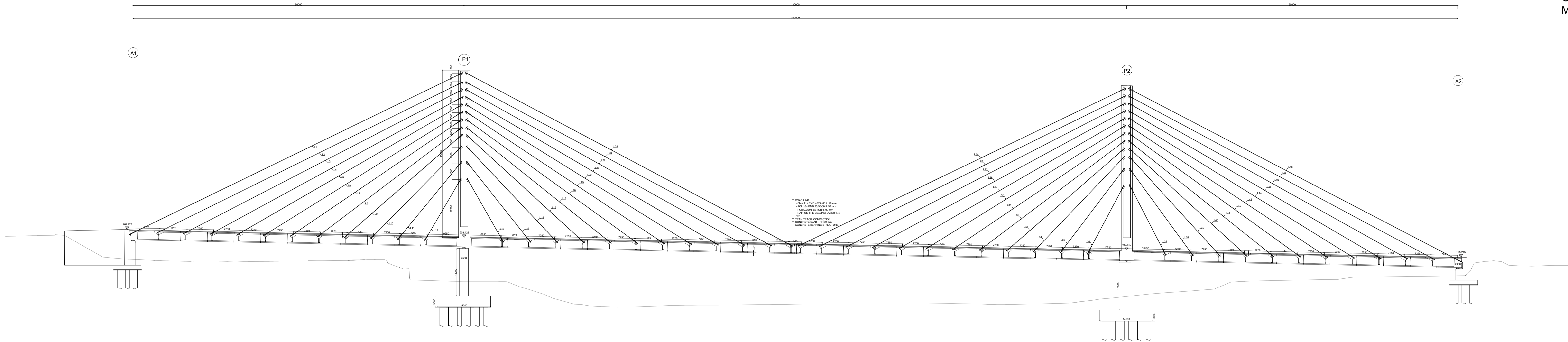


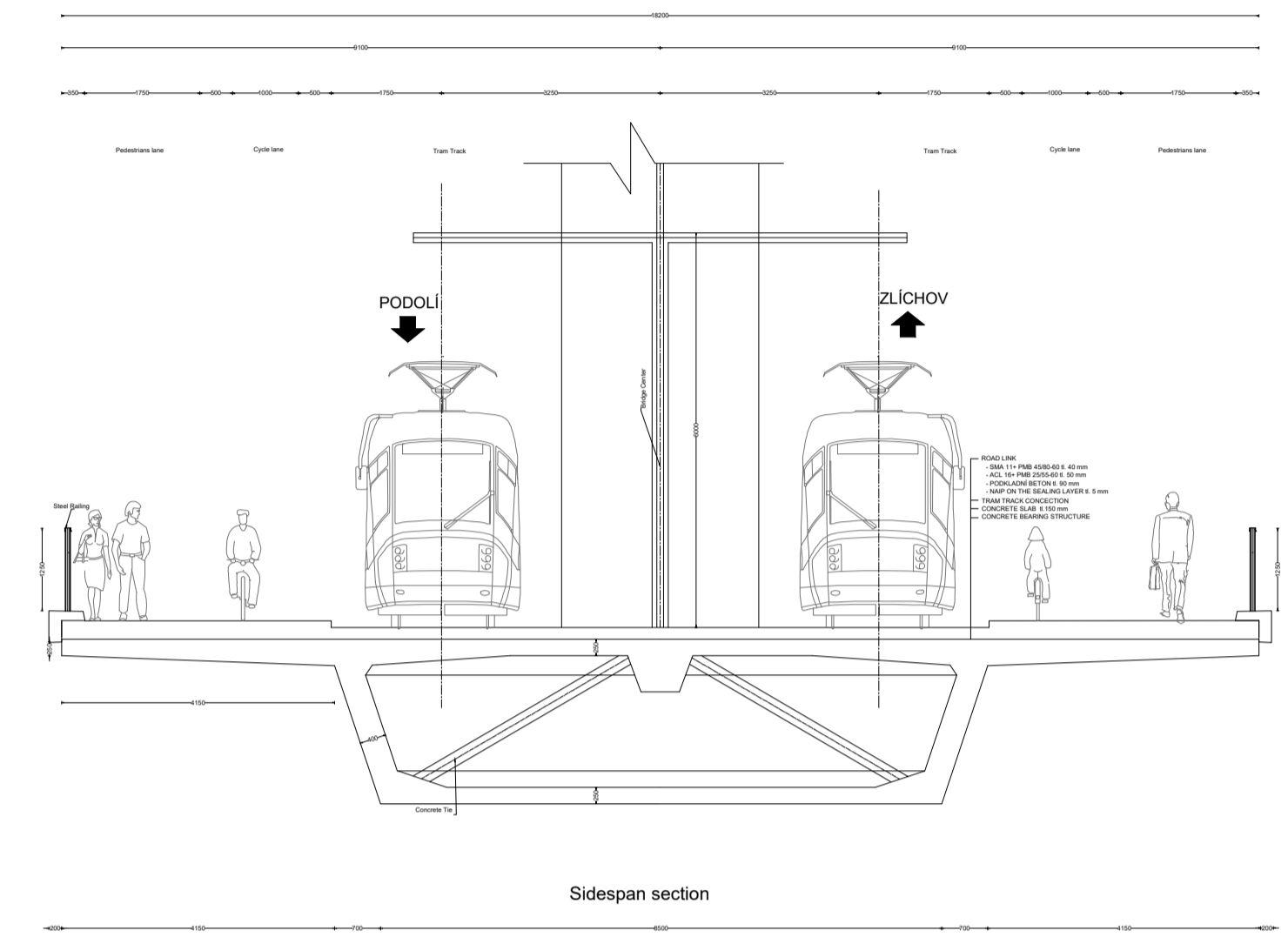
S12	S11	S10	S9	S8	S7	S6	S5	S4	S3	S2	S1	S0	S0	S1	S2_2	S3_2	S4_2	S5_2	S6_2	S7_2	S8_2	S9_2	S10_2	S11_2	S12_2	S12_2	S11_2	S10_2	S9_2	S8_2	S7_2	S6_2	S5_2	S4_2	S3_2	S2_2	S1_2	S0	S0	S1	S2	S3	S4	S5	S6	S7	S8	S9	S10	S11	S12
-----	-----	-----	----	----	----	----	----	----	----	----	----	----	----	----	------	------	------	------	------	------	------	------	-------	-------	-------	-------	-------	-------	------	------	------	------	------	------	------	------	------	----	----	----	----	----	----	----	----	----	----	----	-----	-----	-----



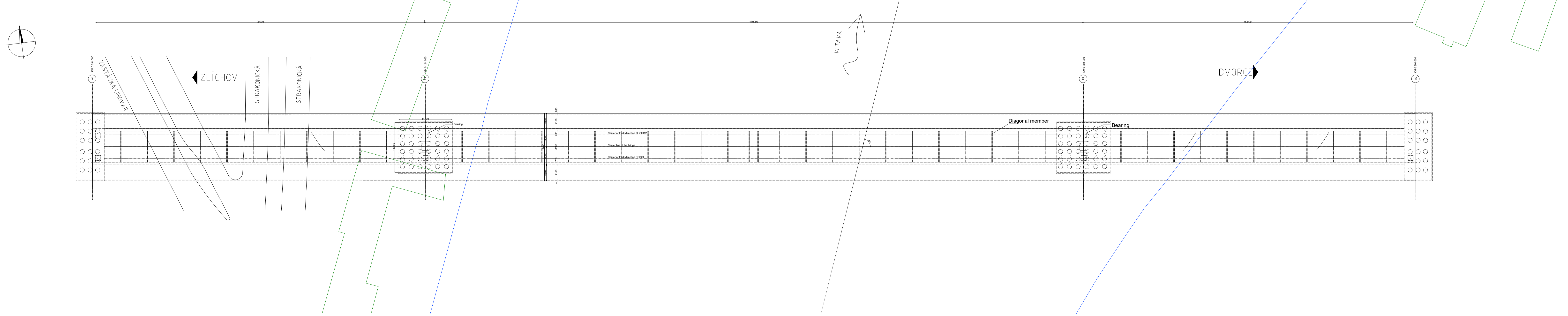
Longitudinal section  
M 1:500



Cross section  
M 1:100



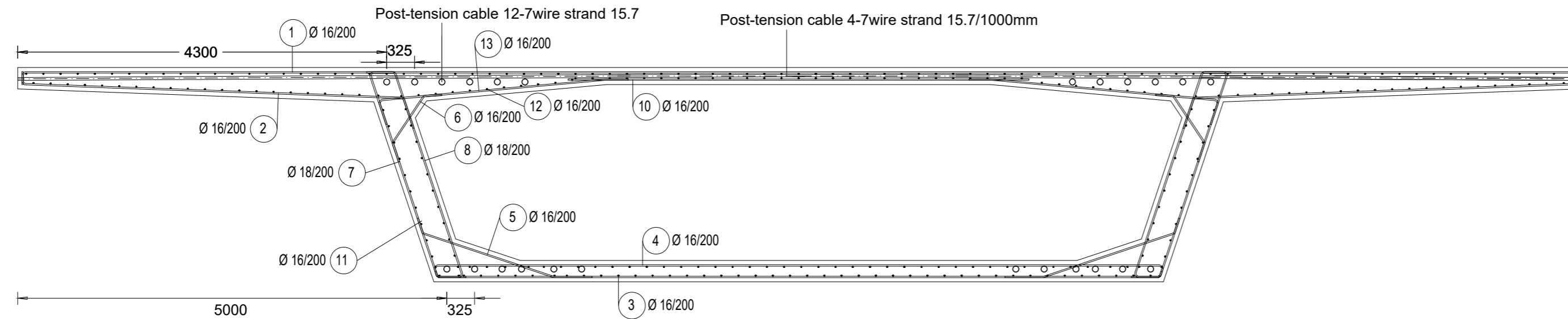
Plan section  
M 1:500




Reinforcement cover : 50mm  
Duct cover : 60mm  
Material  
Superstructure Concrete :C50/60 - XF2, XD1, XC4 (E=37 GPa)  
Rebars :B500B  
Prestresses cables :Y1860S7 (E = 195 GPa)

FIELD	DEPARTMENT	NAME	
BC-K	K133 SUPERVISOR Ing. Michal Drahoš, Ph. D.	Bc. YAZAN AMRI	
SUBJECT:	DIPLOMOVÁ PRÁCE		
TITLE:	Návrh zavěšeného mostu přes Vltavu v Praze z Hlediska postupu výstavby		
DRAWING:	Longitudinal section, plan and cross section		
FORMAT	12xA4	SCALE	1:500; 1:100
DATE:	1/2022	NUMBER OF DRAWING	1

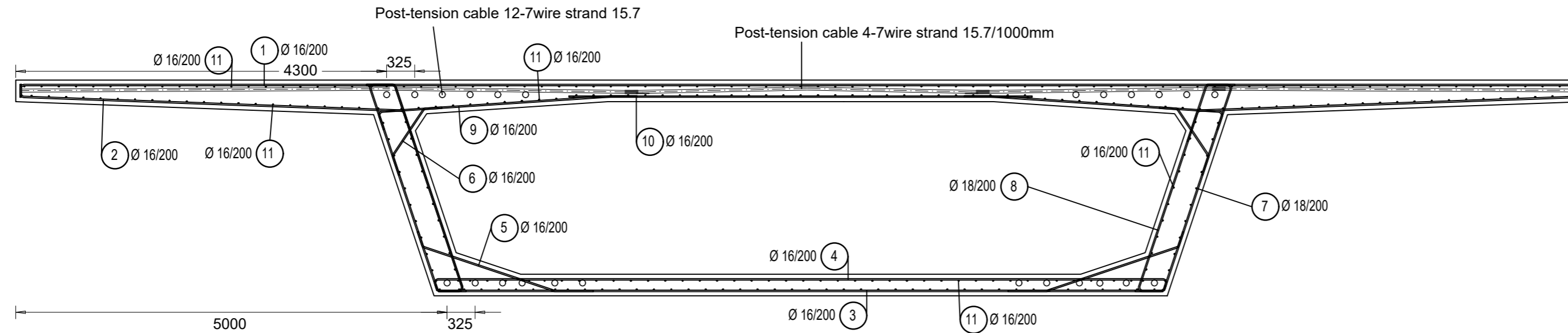
## Main span section reinforcement




Reinforcement cover : 50mm  
 Duct cover : 80mm  
 Material  
 Concrete :C50/60 - XF2, XD1, XC4 (E=37 GPa)  
 Rebars :B500B  
 Prestresses cables :Y1860S7 (E = 195 GPa)

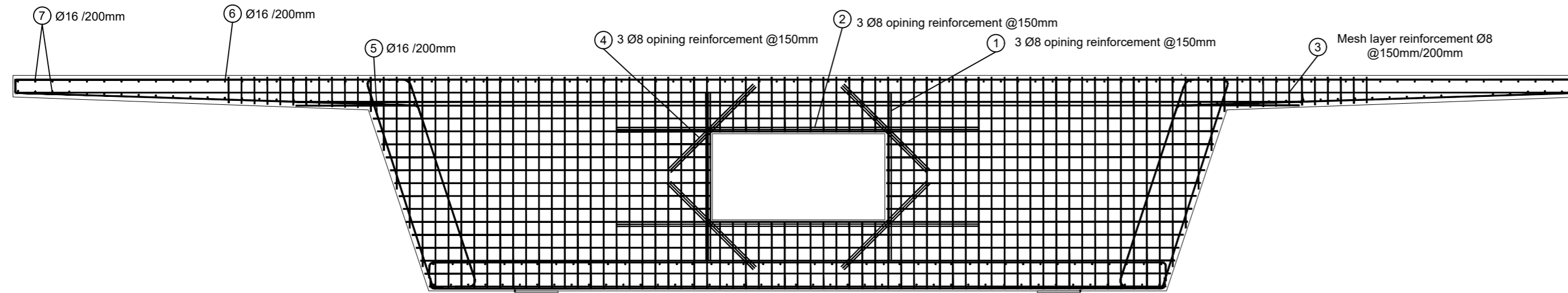
FIELD	DEPARTMENT	NAME		
BC-K	K133	Bc. YAZAN AMRI		
SUBJECT: DIPLOMOVÁ PRÁCE			FORMAT	3xA4
TITLE: Návrh zavěšeného mostu přes Vltavu v Praze z Hlediska postupu výstavby			SCALE	1:50
			DATE	1/2022
DRAWING: Main span section reinforcement			NUMBER OF DRAWING	2

### Side span section reinforcement

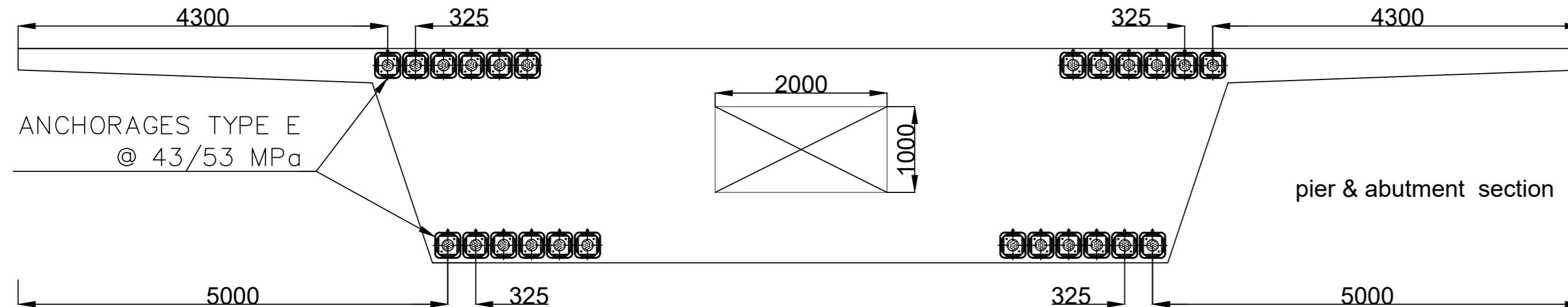


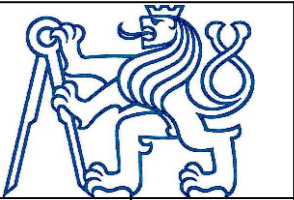
Reinforcement cover : 50mm  
 Duct cover : 80mm  
 Material  
 Concrete : C50/60 - XF2, XD1, XC4 (E=37 GPa)  
 Rebars : B500B  
 Prestresses cables : Y1860S7 (E = 195 GPa)

FIELD	DEPARTMENT	NAME		
BC-K	K133 SUPERVISOR Ing. Michal Drahorád, Ph. D.	Bc. YAZAN AMRI		
SUBJECT: DIPLOMOVÁ PRÁCE			FORMAT	2xA4
TITLE: Návrh zavěšeného mostu přes Vltavu v Praze z Hlediska postupu výstavby			SCALE	1:50
			DATE	1/2022
DRAWING: Side span section reinforcement			NUMBER OF DRAWING	3

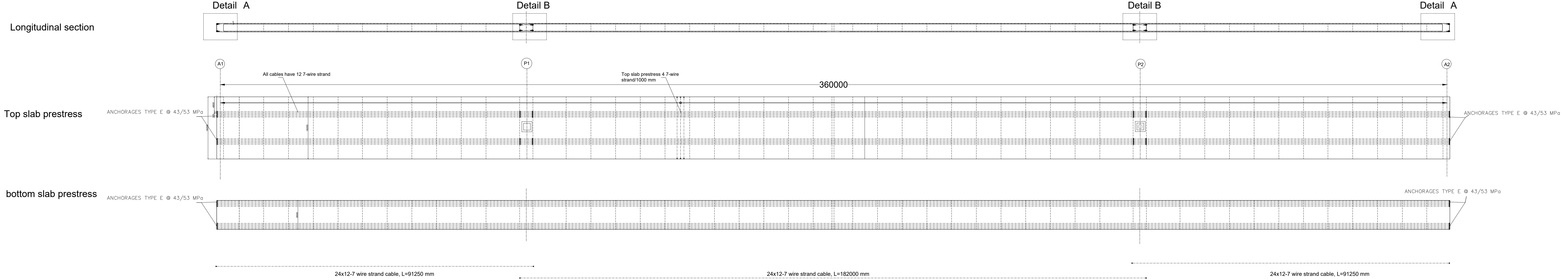
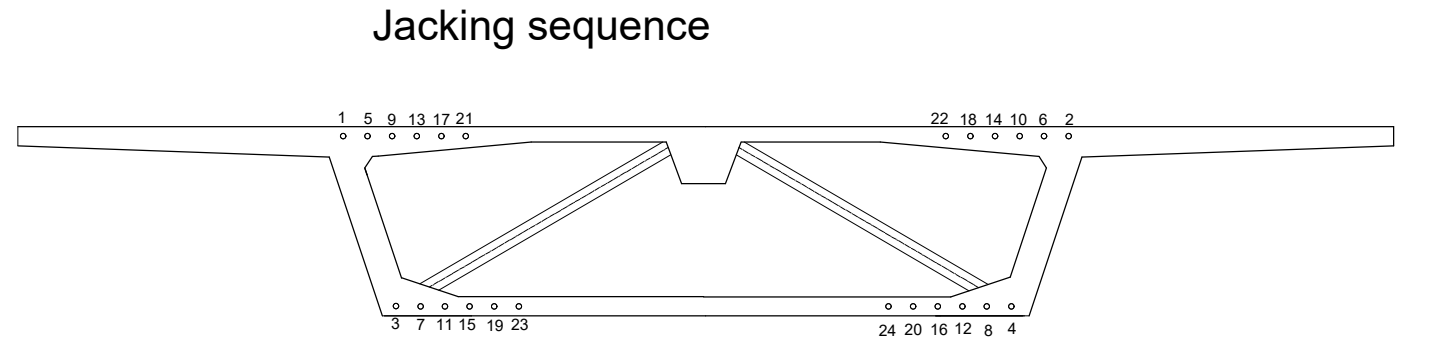


Reinforcement cover: 50mm  
 Duct cover : 80mm  
 Material  
 Prestress cable: Y1860S7 (E = 195 GPa)  
 Concrete: C50/60 - XF2, XD1, XC4 (E=37 GPa)  
 Rebars :B500B

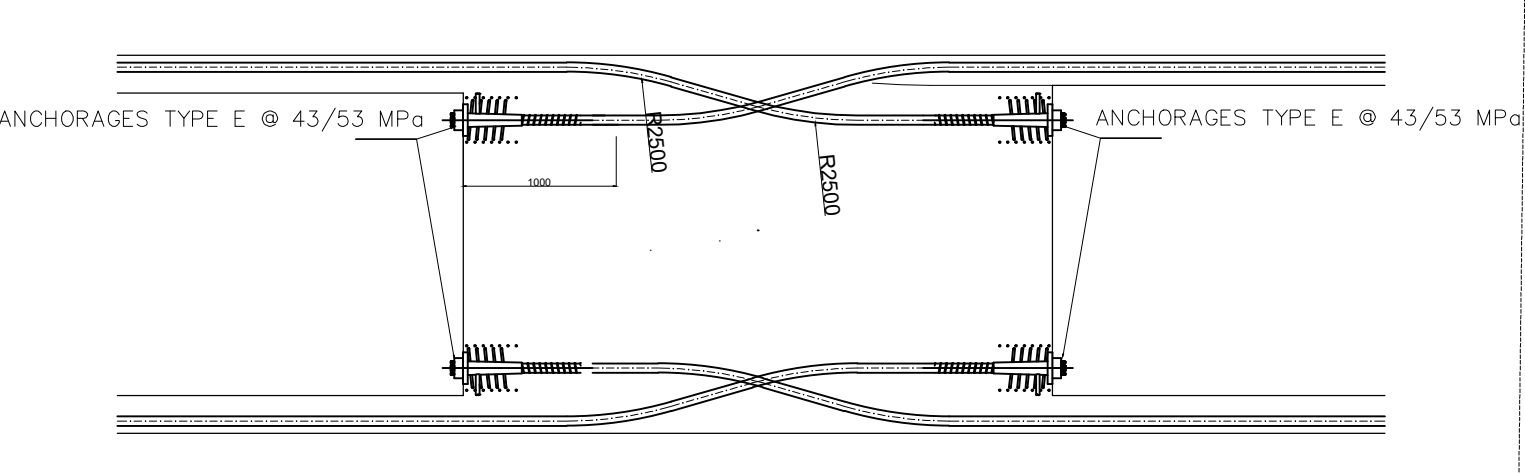


FIELD	DEPARTMENT	NAME				
BC-K	K133	Bc. YAZAN AMRI			FORMAT	2xA4
	SUPERVISOR				SCALE	1:50
	Ing. Michal Drahorád, Ph. D		DATE	1/2022		
SUBJECT: DIPLOMOVÁ PRÁCE			NUMBUR OF DRAWING	4		
TITLE : Návrh zavěšeného mostu přes Vltavu v Praze z Hlediska postupu výstavby						
DRAWING: Abutment section reinforcement and cable anchorage						

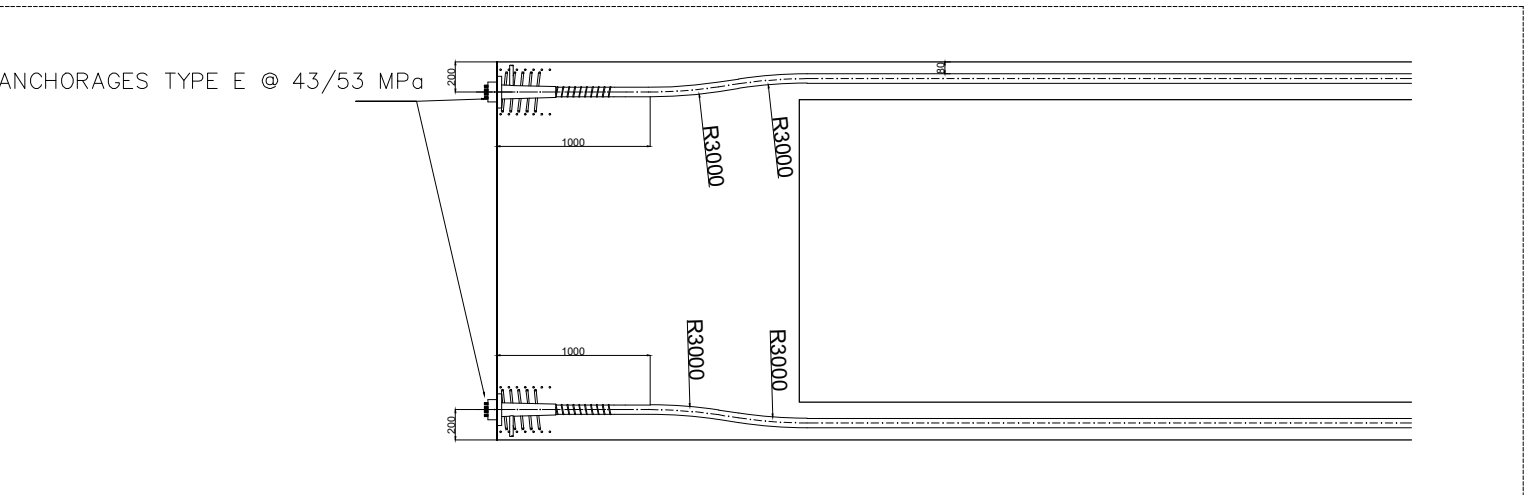
cable location	Cable	Number of strands	Prestressing							
			Area of one strands [mm <sup>2</sup> ]	Total Area [mm <sup>2</sup> ]	length of cables	Jacking stress[Mpa]	Elongation [mm]	Time of Jacking		
Side Span	1to24		12	150	1800	91250	1800	1473	689.29	see construction stage sequence Table 17
Mis Span	1to24		12	150	1800	182000	1800	1473	1374.80	see construction stage sequence Table 17
Side Span	1to24		12	150	1800	91250	1800	1473	689.29	see construction stage sequence Table 17



### Detail B 1:50



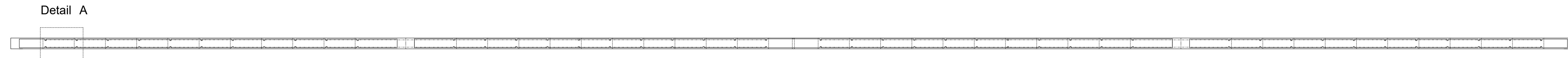
### Detail A 1:50



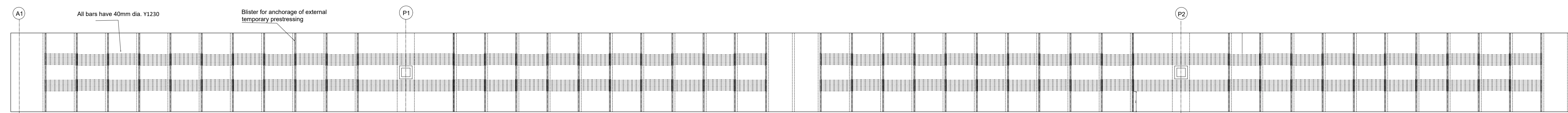
- ▷ Died end
- ▶ Jacking end
- Reinforcement cover : 50mm
- Duct cover : 80mm
- Material
- Concrete :C50/60 - XF2, XD1, XC4 (E=37 GPa)
- Rebars :B500B
- Prestresses cables :Y1860S7 (E = 195 GPa)
- Jacking stress : 1473 MPa

FIELD	DEPARTMENT	NAME	
BC-K	K133 SUPERVISOR Ing. Michal Drahorád, Ph. D	Bc. YAZAN AMRI	
SUBJECT: DIPLOMOVÁ PRÁCE			
TITLE : Návrh zavěšeného mostu přes Vltavu v Praze z Hlediska postupu výstavby			FORMAT : 6x4
DRAWING: Longitudinal prestresses			SCALE : 1:500
			DATE : 1/2022
			NUMBER OF DRAWING : 5

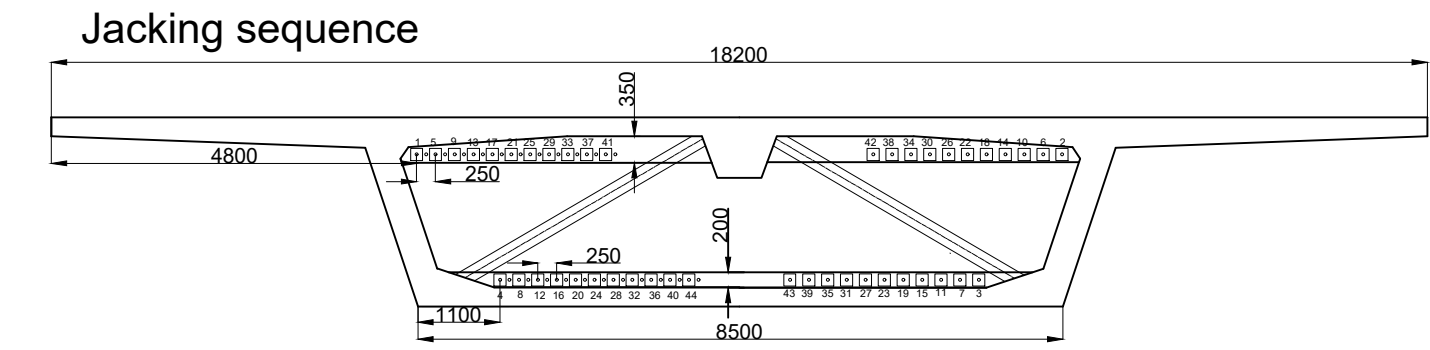
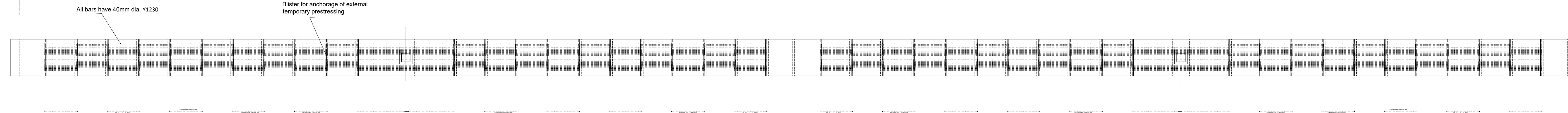
Longitudinal section



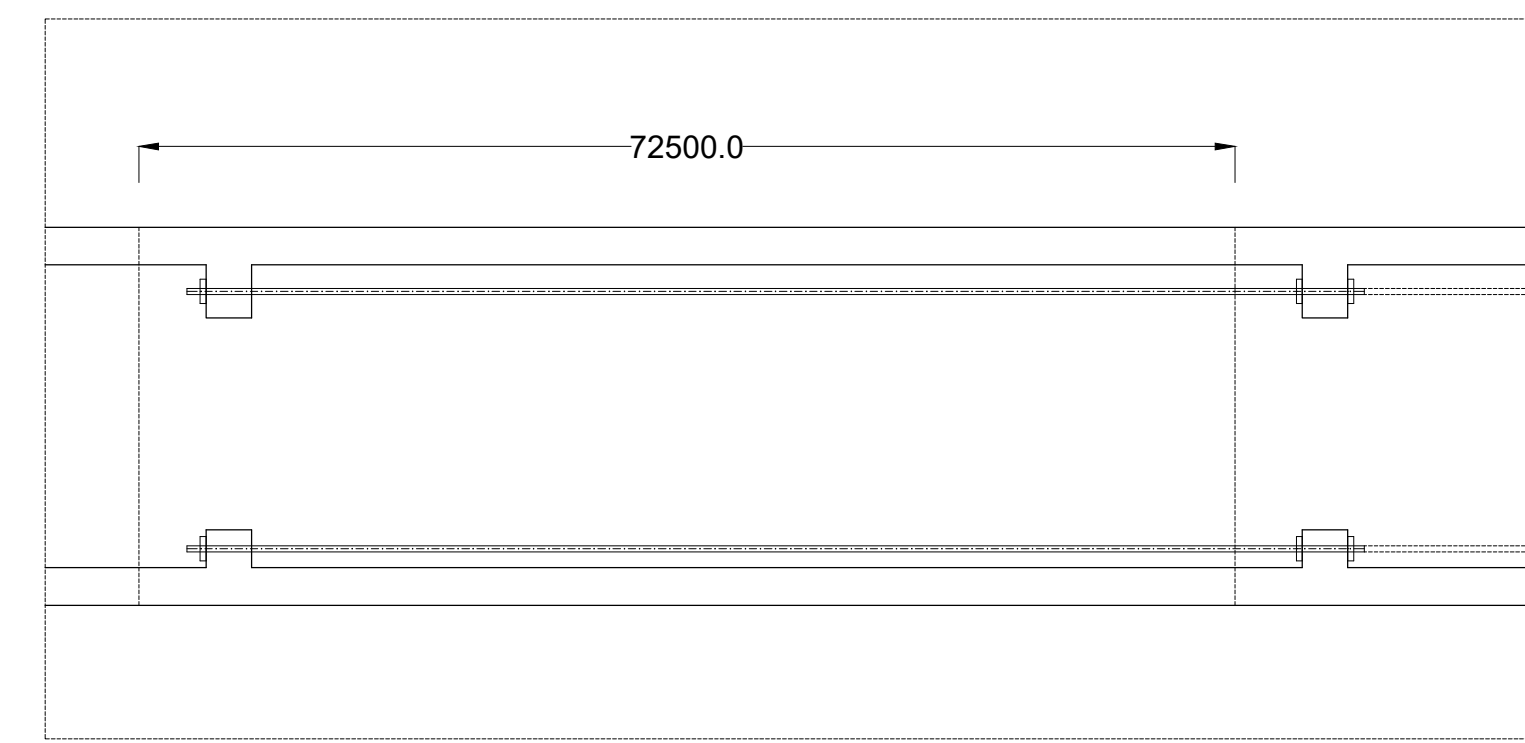
Top slab prestress



bottom slab prestress



Detail A 1:50



▬ Jacking end  
▬ died end

Material  
Concrete : C50/60 - XF2, XD1, XC4 (E=37 GPa)  
Prestresses bar : 40mm Dia. bar Y1230 (E = 205 GPa)  
Jacking stress : 972 MPa

FIELD	DEPARTMENT	NAME	
BC-K	K133	Bc. YAZAN AMRI	
	SUPERVISOR		
SUBJECT: DIPLOMOVÁ PRÁCE			FORMAT: 6xA4
TITLE: Návrh zavěšeného mostu přes Vltavu v Praze z Hlediska postupu výstavby			SCALE: 1:500
DRAWING: Longitudinal temporary prestresses			DATE: 1/2022
			NUMBER OF DRAWING: 6