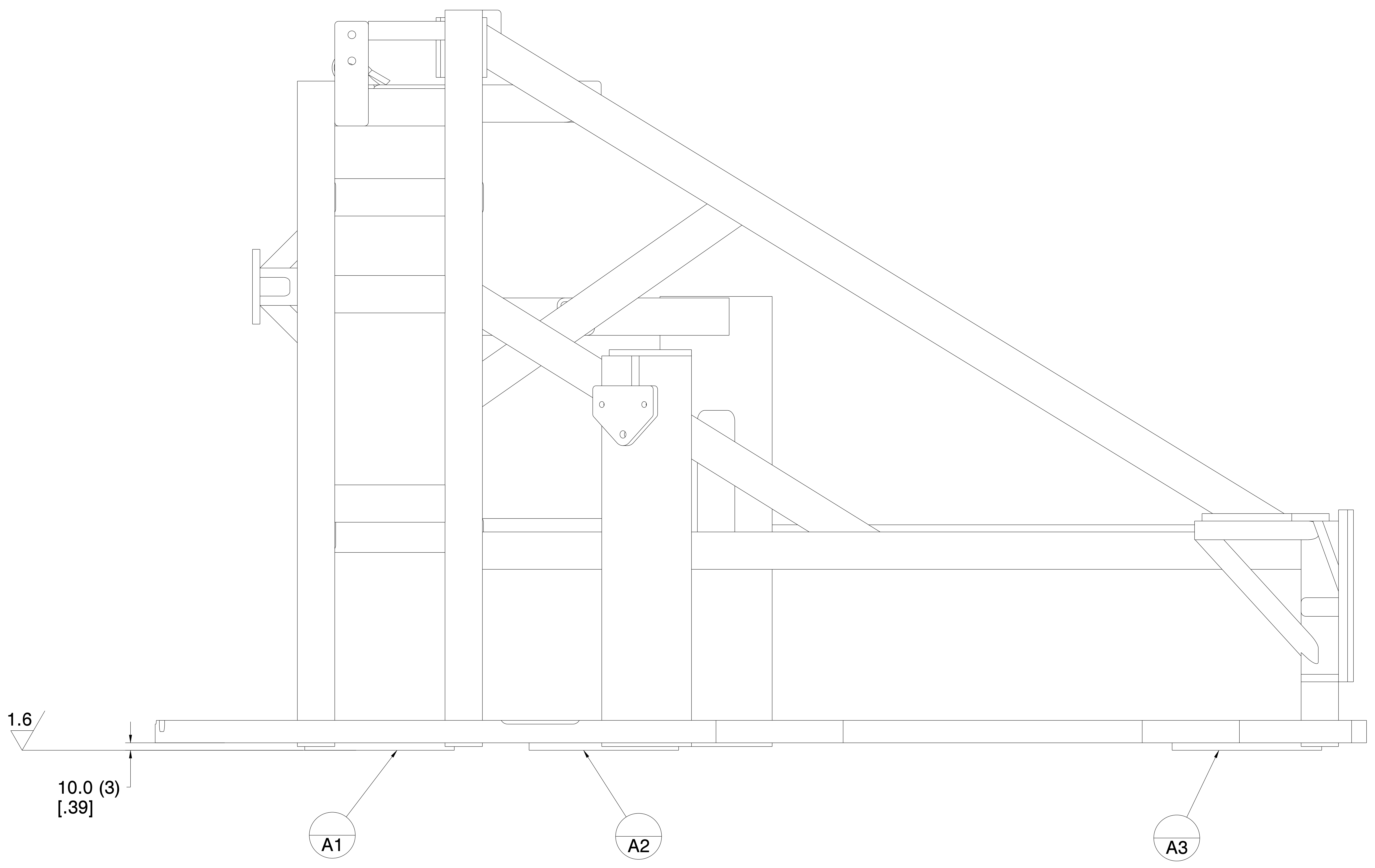


8 7 6 5 4 3 2 1

H
G
F
E
D
C
B
A

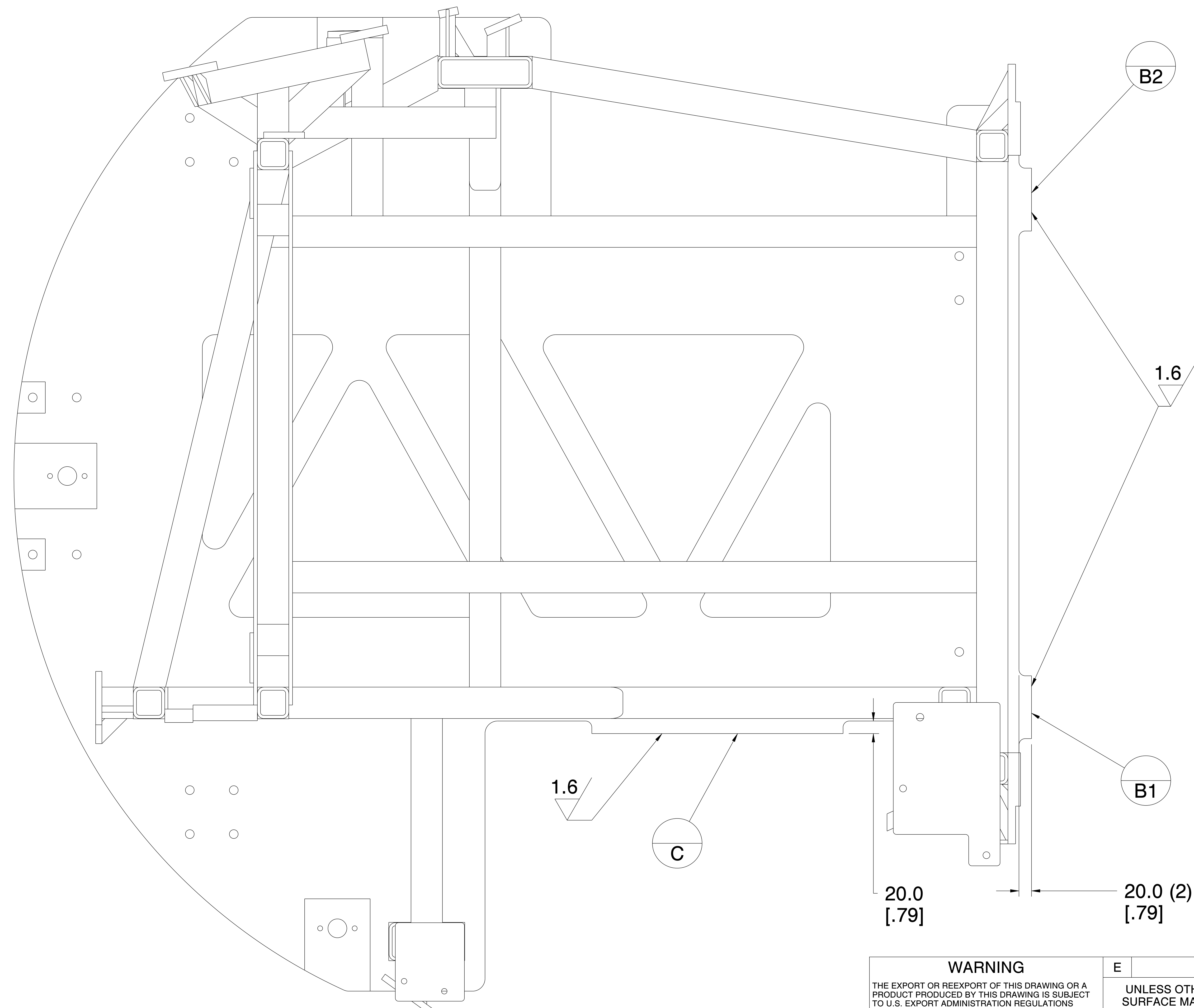


<p>WARNING</p> <p>THE EXPORT OR REEXPORT OF THIS DRAWING OR A PRODUCT PRODUCED BY THIS DRAWING IS SUBJECT TO U.S. EXPORT ADMINISTRATION REGULATIONS AND OTHER APPLICABLE GOVERNMENTAL RESTRICTIONS OR REGULATIONS.</p> <p>COPYRIGHT</p> <p>ORIGINALLY CREATED AND REVISED IN THE YEARS AS IDENTIFIED IN THE RELEASING ECN. BOBCAT COMPANY RESERVES ALL RIGHTS.</p> <p>PROPRIETARY NOTICE</p> <p>THIS DOCUMENT CONTAINS CONFIDENTIAL AND TRADE SECRET INFORMATION, IS THE PROPERTY OF BOBCAT COMPANY, AND IS GIVEN TO THE RECEIVER IN CONFIDENCE. THE RECEIVER, BY RECEPTION AND RETENTION OF THE DOCUMENT, ACCEPTS THE DOCUMENTS IN CONFIDENCE AND AGREES THAT, EXCEPT AS AUTHORIZED IN WRITING BY BOBCAT COMPANY, IT WILL (1) NOT USE THE DOCUMENT OR ANY COPY THEREOF OR THE CONFIDENTIAL OR TRADE SECRET INFORMATION THEREIN; (2) NOT COPY THE DOCUMENT, (3) NOT DISCLOSE TO OTHERS EITHER THE DOCUMENT OR THE CONFIDENTIAL OR TRADE SECRET INFORMATION THEREIN; AND (4) UPON COMPLETION OF THE NEED TO RETAIN THE DOCUMENT, OR UPON DEMAND, RETURN THE DOCUMENT, ALL COPIES THEREOF, AND ALL MATERIALS COPIED THEREFROM.</p>	<p>MM[INCH]</p> <p>UNLESS OTHERWISE SPECIFIED MACHINED SURFACE MAX. ROUGHNESS 125 μin / 3.2 μm</p>		<p>TOLERANCES</p> <p>UNLESS OTHERWISE SPECIFIED</p> <p>SEE BOBCAT STANDARD DE-L FOR SHEETMETAL BEND RAD. TOLERANCE</p> <p>X [X.X] ±2.5 [.1] X.X [X.XX] ±1.0 [.04] X.XX [X.XXX] ±.25 [.010]</p> <p>ANGULAR ±1° FILLETS & RADII ±1.5 [.06]</p>	
	<p>THIRD ANGLE PROJECTION</p>		<p>WELD SYMBOLS PER ANSI/AWS A2.4</p>	
	<p>CHARACTERS) OR <TEXT> PER BOBCAT STD PR-AH</p>		<p>Bobcat Company</p> <p>WEST FARGO, NORTH DAKOTA, USA</p>	
	<p>MATL NPDQ_1011_2</p> <p>ALT .</p> <p>TREAT .</p> <p>HARD .</p>		<p>INITIAL ECN: .</p> <p>WT 1035.84 lb / 469.852 kg</p> <p>S/A 16434.20 in² / 106027.08 cm²</p> <p>SHT 1/15</p> <p>DWG. NO. NPDQ_1011</p>	

0			DPR
REV	DESCRIPTION	CHG NOTICE	DWN SHEET

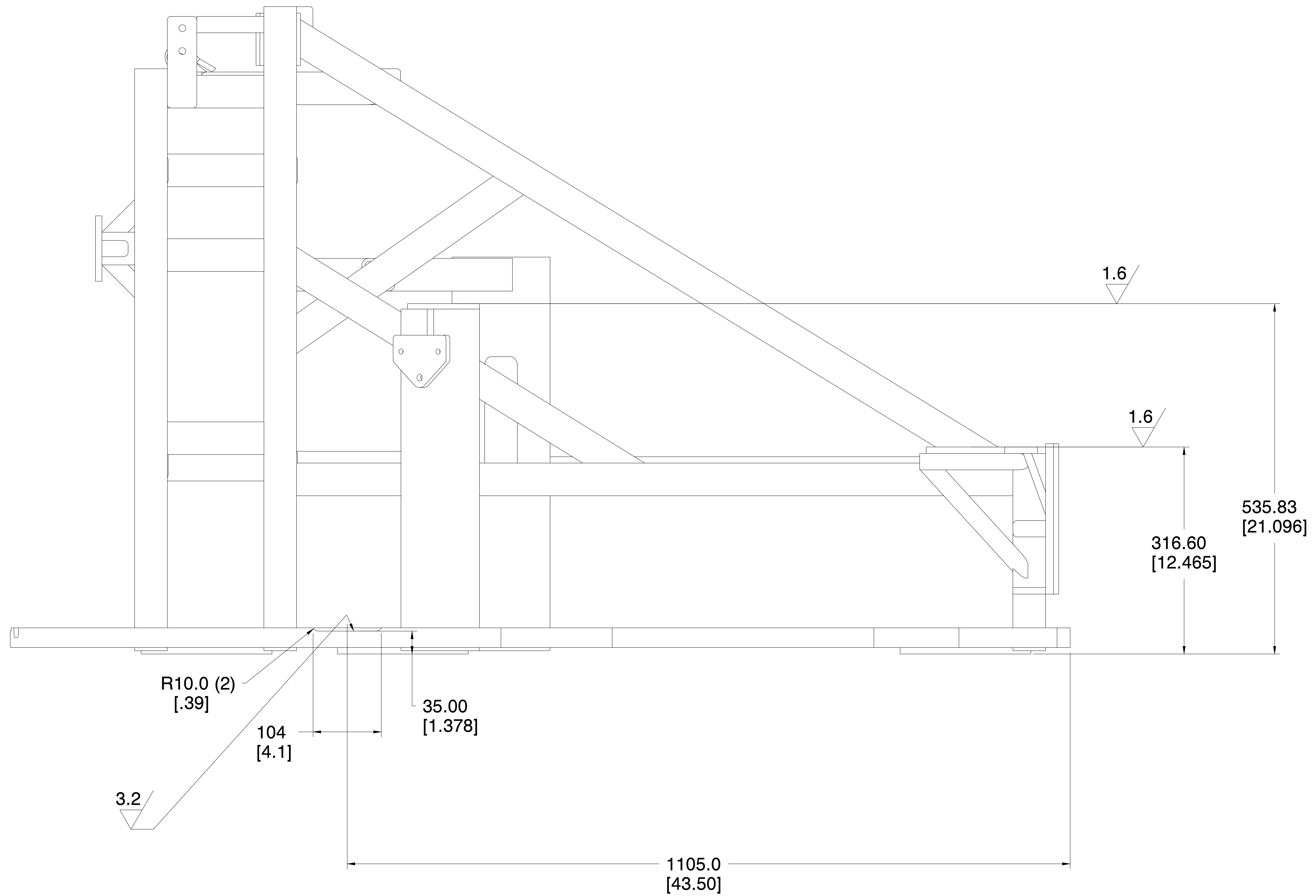
8 7 6 5 4 3 2 1

H
G
F
E
D
C
B
A



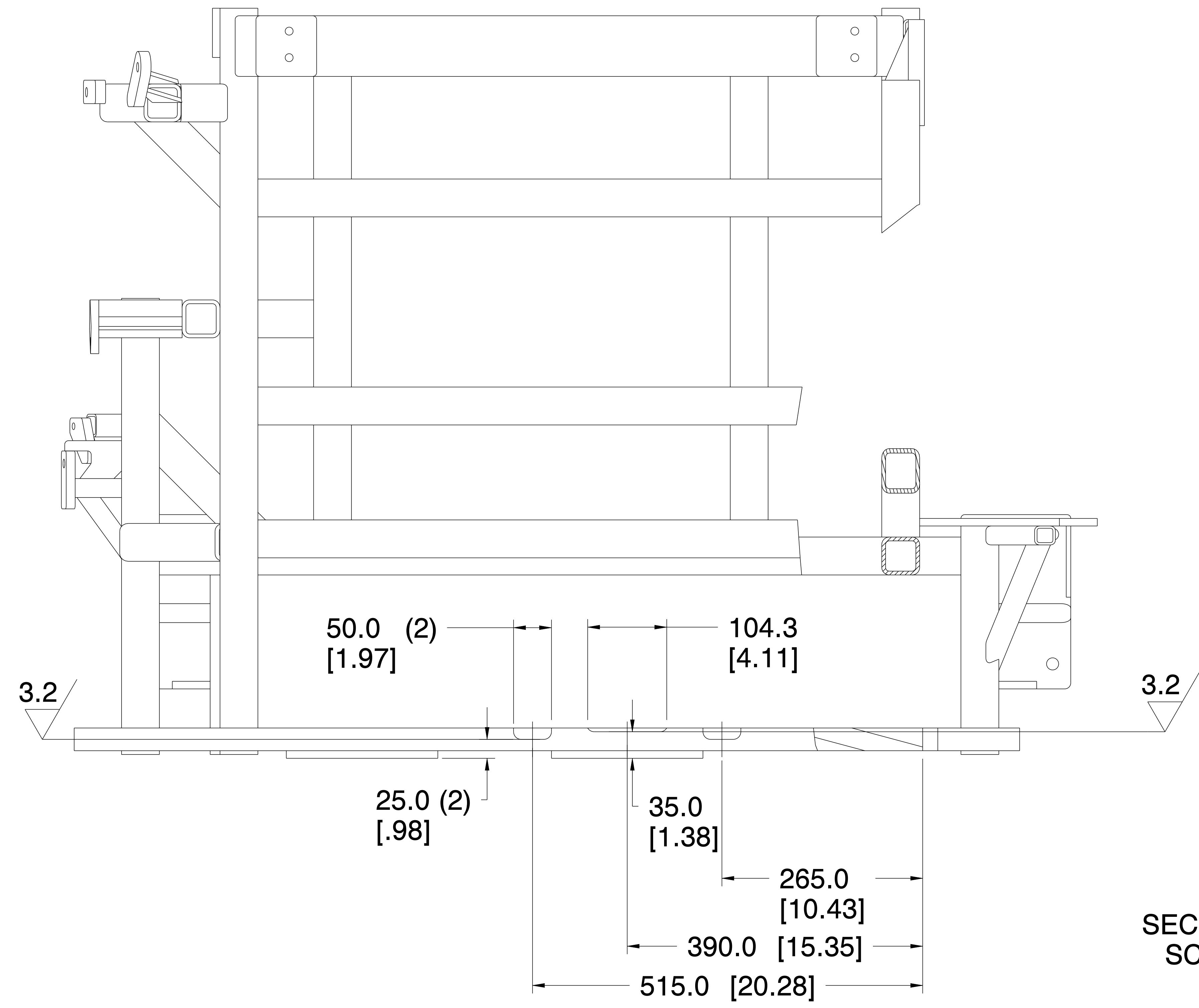
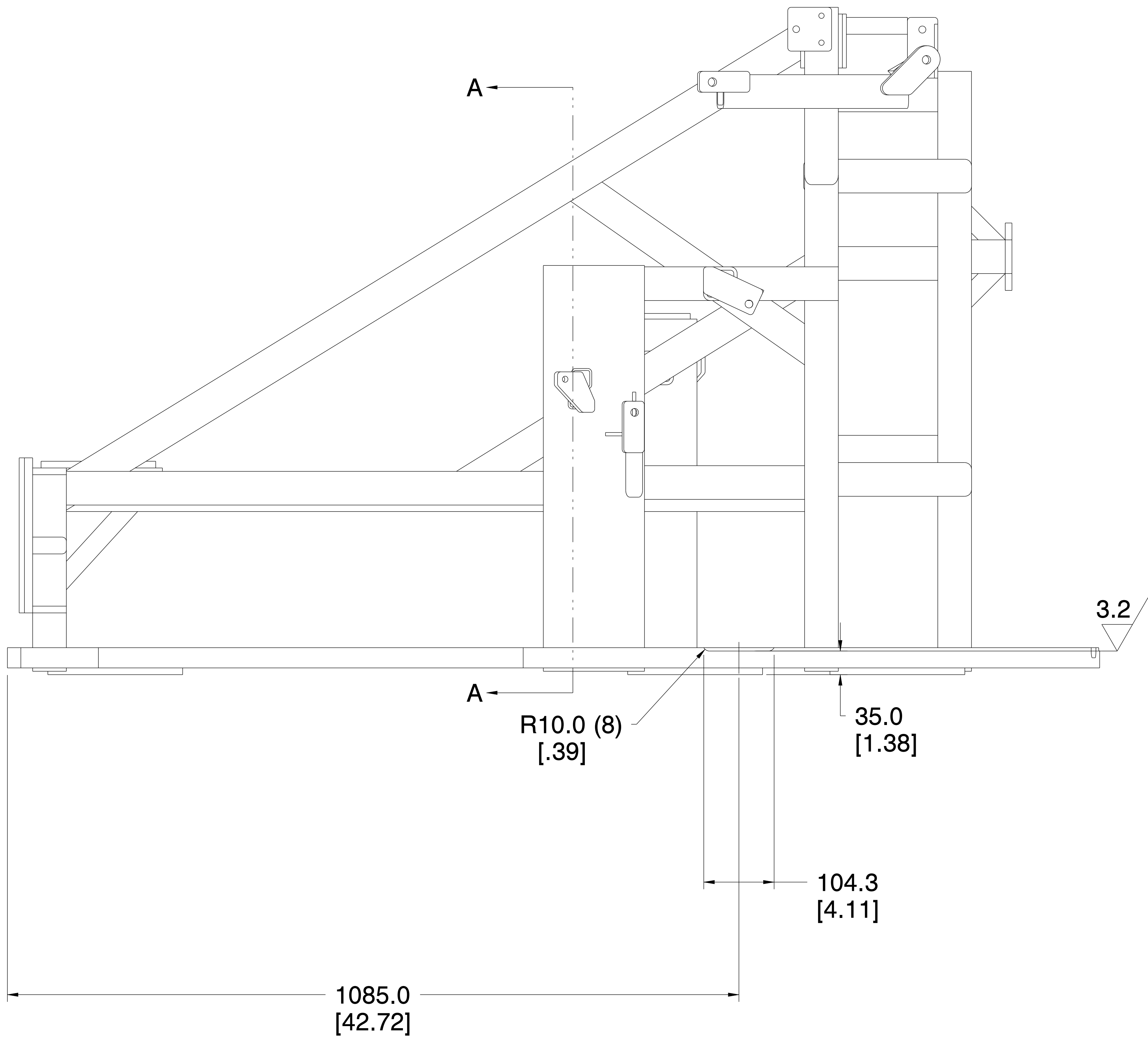
<p>WARNING</p> <p>THE EXPORT OR REEXPORT OF THIS DRAWING OR A PRODUCT PRODUCED BY THIS DRAWING IS SUBJECT TO U.S. EXPORT ADMINISTRATION REGULATIONS AND OTHER APPLICABLE GOVERNMENTAL RESTRICTIONS OR REGULATIONS.</p> <p>COPYRIGHT</p> <p>ORIGINALLY CREATED AND REVISED IN THE YEARS AS IDENTIFIED IN THE RELEASING ECN. BOBCAT COMPANY RESERVES ALL RIGHTS.</p> <p>PROPRIETARY NOTICE</p> <p>THIS DOCUMENT CONTAINS CONFIDENTIAL AND TRADE SECRET INFORMATION, IS THE PROPERTY OF BOBCAT COMPANY, AND IS GIVEN TO THE RECEIVER IN CONFIDENCE. THE RECEIVER, BY RECEIPT AND RETENTION OF THE DOCUMENT, ACCEPTS THE DOCUMENTS IN CONFIDENCE AND AGREES THAT, EXCEPT AS AUTHORIZED IN WRITING BY BOBCAT COMPANY, IT WILL (1) NOT USE THE DOCUMENT OR ANY COPY THEREOF OR THE CONFIDENTIAL OR TRADE SECRET INFORMATION THEREIN; (2) NOT COPY THE DOCUMENT, (3) NOT DISCLOSE TO OTHERS EITHER THE DOCUMENT OR THE CONFIDENTIAL OR TRADE SECRET INFORMATION THEREIN; AND (4) UPON COMPLETION OF THE NEED TO RETAIN THE DOCUMENT, OR UPON DEMAND, RETURN THE DOCUMENT, ALL COPIES THEREOF, AND ALL MATERIALS COPIED THEREFROM.</p>	<p>E MM[INCH]</p>		<p>TOLERANCES</p>	
	<p>UNLESS OTHERWISE SPECIFIED MACHINED SURFACE MAX. ROUGHNESS 125 μin / 3.2 μm</p>		<p>UNLESS OTHERWISE SPECIFIED</p>	
	<p>THIRD ANGLE PROJECTION</p>		<p>SEE BOBCAT STANDARD DE-L FOR SHEETMETAL BEND RAD. TOLERANCE</p>	
	<p>WELD SYMBOLS PER ANSI/AWS A2.4</p>		<p>X [X.X] ±2.5 [.1] X.X [X.XX] ±1.0 [.04] X.XX [X.XXX] ±.25 [.010]</p> <p>ANGULAR ±1° FILLETS & RADII ±1.5 [.06]</p>	
<p>CHARACTERS) OR <TEXT> PER BOBCAT STD PR-AH</p>		<p>Bobcat Company</p> <p>WEST FARGO, NORTH DAKOTA, USA</p>		<p>MEISTERBOCK MACH</p> <p>NPDQ 1011</p>
<p>MATL NPDQ_1011_2</p>		<p>INITIAL ECN: . TITLE:</p>		
<p>ALT .</p>		<p>WT 1035.84 lb S/A 16434.20 in²</p> <p>469.852 kg 106027.08 cm²</p>		
<p>TREAT .</p>		<p>SHT 2/15 DWG. NO.</p>		

0			DPR	
REV	DESCRIPTION	CHG NOTICE	DWN	SHEET



<p>WARNING</p> <p>THE EXPORT OR REEXPORT OF THIS DRAWING OR A PRODUCT PRODUCED BY THIS DRAWING IS SUBJECT TO U.S. EXPORT ADMINISTRATION REGULATIONS AND OTHER APPLICABLE GOVERNMENTAL RESTRICTIONS OR REGULATIONS.</p> <p>COPYRIGHT</p> <p>ORIGINALLY CREATED AND REVISED IN THE YEARS AS IDENTIFIED IN THE RELEASING ECN. BOBCAT COMPANY RESERVES ALL RIGHTS.</p> <p>PROPRIETARY NOTICE</p> <p>THIS DOCUMENT CONTAINS CONFIDENTIAL AND TRADE SECRET INFORMATION, IS THE PROPERTY OF BOBCAT COMPANY, AND IS GIVEN TO THE RECEIVER IN CONFIDENCE. THE RECEIVER, BY RECEPTION AND RETENTION OF THE DOCUMENT, ACCEPTS THE DOCUMENTS IN CONFIDENCE AND AGREES THAT, EXCEPT AS AUTHORIZED IN WRITING BY BOBCAT COMPANY, IT WILL (1) NOT USE THE DOCUMENT OR ANY COPY THEREOF OR THE CONFIDENTIAL OR TRADE SECRET INFORMATION THEREIN; (2) NOT COPY THE DOCUMENT, (3) NOT DISCLOSE TO OTHERS EITHER THE DOCUMENT OR THE CONFIDENTIAL OR TRADE SECRET INFORMATION THEREIN; AND (4) UPON COMPLETION OF THE NEED TO RETAIN THE DOCUMENT, OR UPON DEMAND, RETURN THE DOCUMENT, ALL COPIES THEREOF, AND ALL MATERIALS COPIED THEREFROM.</p>	<p>MM[INCH]</p> <p>UNLESS OTHERWISE SPECIFIED MACHINED SURFACE MAX. ROUGHNESS 125 μin / 3.2 μm</p>		<p>TOLERANCES</p> <p>UNLESS OTHERWISE SPECIFIED</p> <p>SEE BOBCAT STANDARD DE-L FOR SHEETMETAL BEND RAD. TOLERANCE</p> <p>X [X.X] ±2.5 [.1] X.X [X.XX] ±1.0 [.04] X.XX [X.XXX] ±.25 [.010]</p> <p>ANGULAR ±1° FILLETS & RADII ±1.5 [.06]</p>	
	<p>THIRD ANGLE PROJECTION</p>	<p>WELD SYMBOLS PER ANSI/AWS A2.4</p>	<p>Bobcat Company</p> <p>WEST FARGO, NORTH DAKOTA, USA</p>	
<p>CHARACTERS) OR <TEXT> PER BOBCAT STD PR-AH</p>		<p>INITIAL ECN: . TITLE: MEISTERBOCK MACH</p>		
<p>MATL NPDQ_1011_2</p> <p>ALT .</p> <p>MATL .</p> <p>TREAT .</p> <p>HARD .</p>	<p>WT 1035.84 lb 469.852 kg</p>	<p>S/A 16434.20 in² 106027.08 cm²</p>	<p>SHT 3/15</p> <p>DWG. NO. NPDQ_1011</p>	

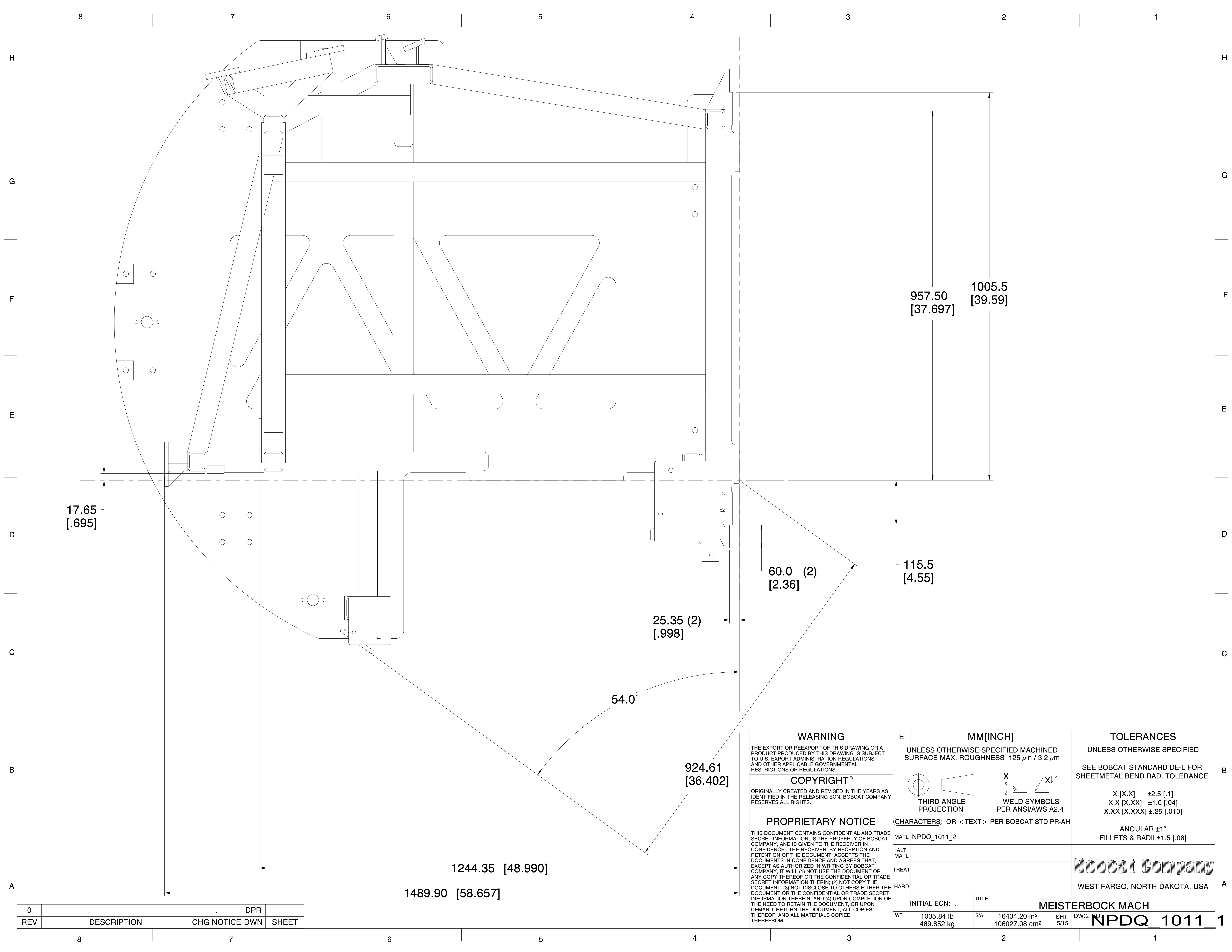
0			DPR	
REV	DESCRIPTION	CHG NOTICE	DWN	SHEET



SECTION A-A
SCALE .300

<p>WARNING</p> <p>THE EXPORT OR REEXPORT OF THIS DRAWING OR A PRODUCT PRODUCED BY THIS DRAWING IS SUBJECT TO U.S. EXPORT ADMINISTRATION REGULATIONS AND OTHER APPLICABLE GOVERNMENTAL RESTRICTIONS OR REGULATIONS.</p> <p>COPYRIGHT</p> <p>ORIGINALLY CREATED AND REVISED IN THE YEARS AS IDENTIFIED IN THE RELEASING ECN. BOBCAT COMPANY RESERVES ALL RIGHTS.</p> <p>PROPRIETARY NOTICE</p> <p>THIS DOCUMENT CONTAINS CONFIDENTIAL AND TRADE SECRET INFORMATION, IS THE PROPERTY OF BOBCAT COMPANY, AND IS GIVEN TO THE RECEIVER IN CONFIDENCE. THE RECEIVER, BY RECEIPT AND RETENTION OF THE DOCUMENT, ACCEPTS THE DOCUMENTS IN CONFIDENCE AND AGREES THAT, EXCEPT AS AUTHORIZED IN WRITING BY BOBCAT COMPANY, IT WILL (1) NOT USE THE DOCUMENT OR ANY COPY THEREOF OR THE CONFIDENTIAL OR TRADE SECRET INFORMATION THEREIN; (2) NOT COPY THE DOCUMENT, (3) NOT DISCLOSE TO OTHERS EITHER THE DOCUMENT OR THE CONFIDENTIAL OR TRADE SECRET INFORMATION THEREIN; AND (4) UPON COMPLETION OF THE NEED TO RETAIN THE DOCUMENT, OR UPON DEMAND, RETURN THE DOCUMENT, ALL COPIES THEREOF, AND ALL MATERIALS COPIED THEREFROM.</p>	<p>MM[INCH]</p> <p>UNLESS OTHERWISE SPECIFIED MACHINED SURFACE MAX. ROUGHNESS 125 μin / 3.2 μm</p>		<p>TOLERANCES</p> <p>UNLESS OTHERWISE SPECIFIED</p> <p>SEE BOBCAT STANDARD DE-L FOR SHEETMETAL BEND RAD. TOLERANCE</p> <p>X [X.X] ±2.5 [.1] X.X [X.XX] ±1.0 [.04] X.XX [X.XXX] ±.25 [.010]</p> <p>ANGULAR ±1° FILLETS & RADII ±1.5 [.06]</p>	
	<p>THIRD ANGLE PROJECTION</p>	<p>WELD SYMBOLS PER ANSI/AWS A2.4</p>	<p>Bobcat Company WEST FARGO, NORTH DAKOTA, USA</p>	
<p>CHARACTERS) OR <TEXT> PER BOBCAT STD PR-AH</p>		<p>INITIAL ECN: .</p>		
<p>MATL NPDQ_1011_2</p>		<p>TITLE: MEISTERBOCK MACH</p>		
<p>WT 1035.84 lb 469.852 kg</p>		<p>S/A 16434.20 in² 106027.08 cm²</p>		
<p>REV 0</p>		<p>SHT 4/15</p>		
<p>DESCRIPTION</p>		<p>DWG. NO. NPDQ_1011</p>		
<p>CHG NOTICE</p>		<p>SHEET 1</p>		
<p>DPR</p>		<p>8 7 6 5 4 3 2 1</p>		
<p>SHEET</p>		<p></p>		

0			DPR
REV	DESCRIPTION	CHG NOTICE	SHEET



17.65
[.695]

957.50
[37.697] 1005.5
[39.59]

115.5
[4.55]

60.0 (2)
[2.36]

25.35 (2)
[.998]

54.0°

924.61
[36.402]

1244.35 [48.990]

1489.90 [58.657]

WARNING
THE EXPORT OR REEXPORT OF THIS DRAWING OR A PRODUCT PRODUCED BY THIS DRAWING IS SUBJECT TO U.S. EXPORT ADMINISTRATION REGULATIONS AND OTHER APPLICABLE GOVERNMENTAL RESTRICTIONS OR REGULATIONS.

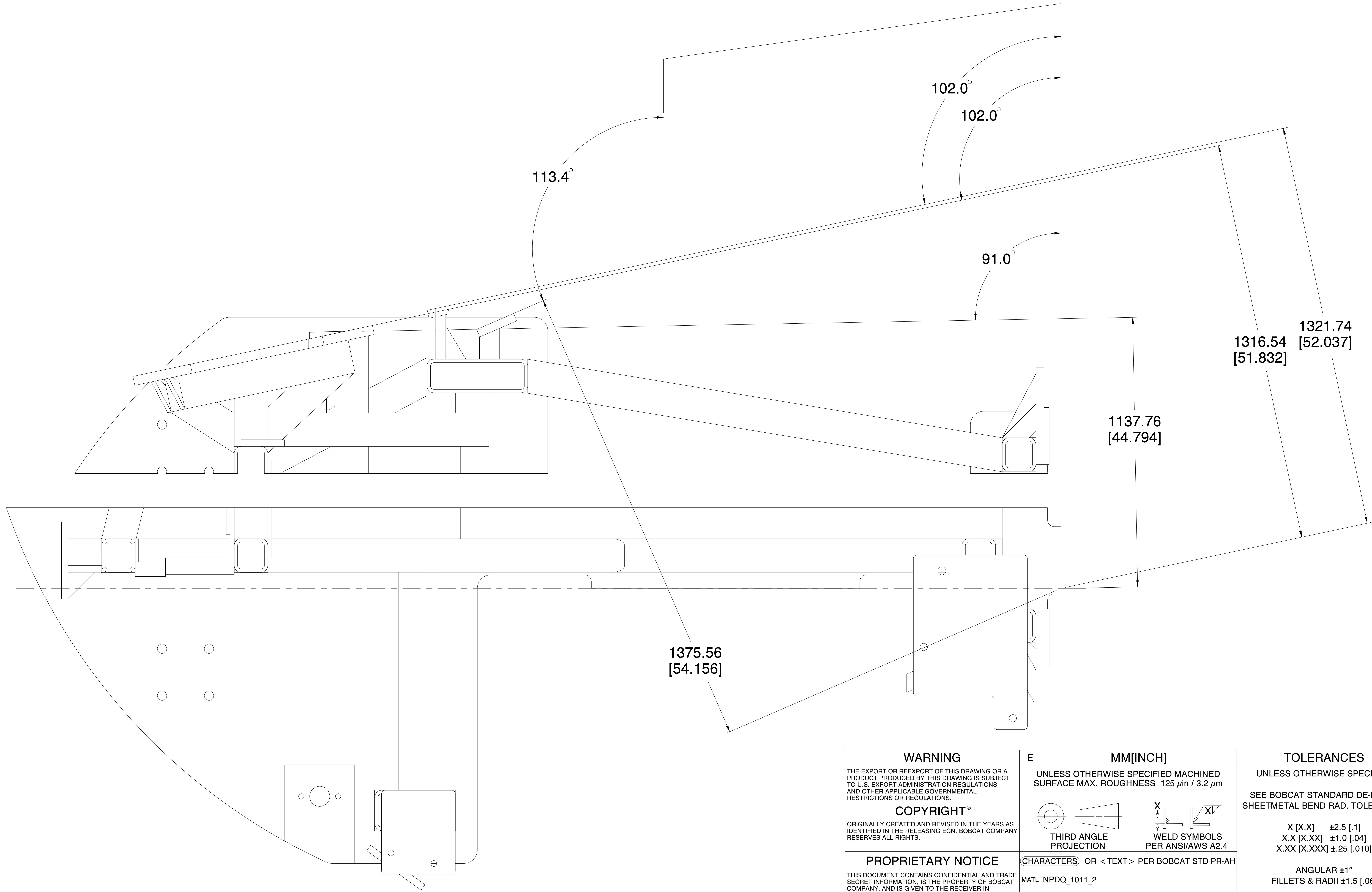
COPYRIGHT
ORIGINALLY CREATED AND REVISED IN THE YEARS AS IDENTIFIED IN THE RELEASING ECN. BOBCAT COMPANY RESERVES ALL RIGHTS.

PROPRIETARY NOTICE
THIS DOCUMENT CONTAINS CONFIDENTIAL AND TRADE SECRET INFORMATION, IS THE PROPERTY OF BOBCAT COMPANY, AND IS GIVEN TO THE RECEIVER IN CONFIDENCE. THE RECEIVER, BY RECEPTION AND RETENTION OF THE DOCUMENT, ACCEPTS THE DOCUMENTS IN CONFIDENCE AND AGREES THAT, EXCEPT AS AUTHORIZED IN WRITING BY BOBCAT COMPANY, IT WILL (1) NOT USE THE DOCUMENT OR ANY COPY THEREOF OR THE CONFIDENTIAL OR TRADE SECRET INFORMATION THEREIN; (2) NOT COPY THE DOCUMENT, (3) NOT DISCLOSE TO OTHERS EITHER THE DOCUMENT OR THE CONFIDENTIAL OR TRADE SECRET INFORMATION THEREIN; AND (4) UPON COMPLETION OF THE NEED TO RETAIN THE DOCUMENT, OR UPON DEMAND, RETURN THE DOCUMENT, ALL COPIES THEREOF, AND ALL MATERIALS COPIED THEREFROM.

E		MM[INCH]		TOLERANCES	
UNLESS OTHERWISE SPECIFIED MACHINED SURFACE MAX. ROUGHNESS 125 μin / 3.2 μm		THIRD ANGLE PROJECTION		UNLESS OTHERWISE SPECIFIED	
MATERIAL: NPDQ_1011_2		WELD SYMBOLS PER ANSI/AWS A2.4		SEE BOBCAT STANDARD DE-L FOR SHEETMETAL BEND RAD. TOLERANCE	
TREATMENT:		CHARACTERS) OR <TEXT> PER BOBCAT STD PR-AH		X [X.X] ±2.5 [.1] X.X [X.XX] ±1.0 [.04] X.XX [X.XXX] ±.25 [.010]	
HARDNESS:		INITIAL ECN: .		ANGULAR ±1° FILLETS & RADII ±1.5 [.06]	
TITLE: MEISTERBOCK MACH		WT 1035.84 lb / 469.852 kg		SHT 5/15	
DWG. NO. NPDQ_1011		S/A 16434.20 in² / 106027.08 cm²		1	

Bobcat Company
WEST FARGO, NORTH DAKOTA, USA

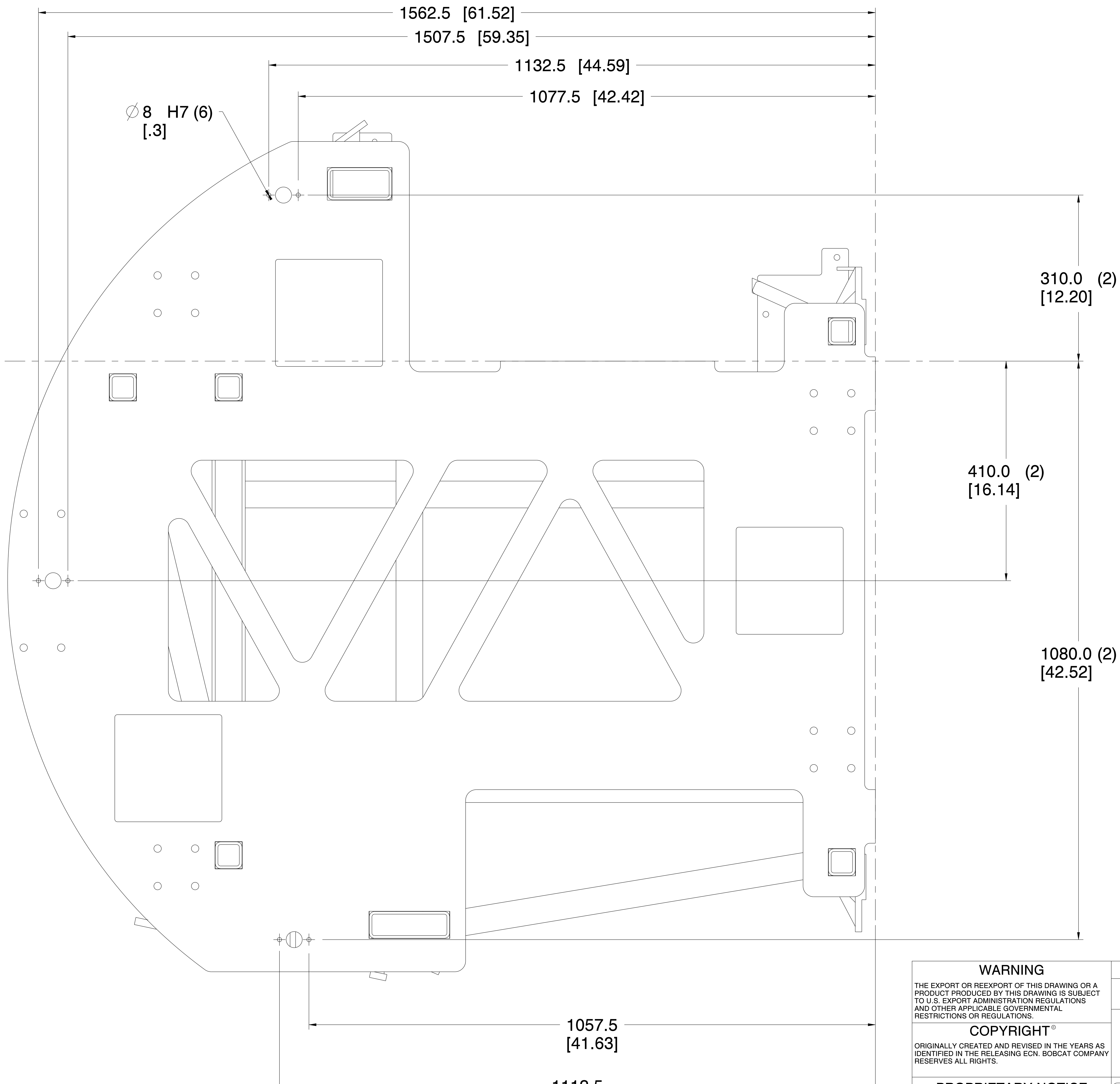
0			DPR	
REV	DESCRIPTION	CHG NOTICE	DWN	SHEET



<p>WARNING</p> <p>THE EXPORT OR REEXPORT OF THIS DRAWING OR A PRODUCT PRODUCED BY THIS DRAWING IS SUBJECT TO U.S. EXPORT ADMINISTRATION REGULATIONS AND OTHER APPLICABLE GOVERNMENTAL RESTRICTIONS OR REGULATIONS.</p> <p>COPYRIGHT</p> <p>ORIGINALLY CREATED AND REVISED IN THE YEARS AS IDENTIFIED IN THE RELEASING ECN. BOBCAT COMPANY RESERVES ALL RIGHTS.</p> <p>PROPRIETARY NOTICE</p> <p>THIS DOCUMENT CONTAINS CONFIDENTIAL AND TRADE SECRET INFORMATION, IS THE PROPERTY OF BOBCAT COMPANY, AND IS GIVEN TO THE RECEIVER IN CONFIDENCE. THE RECEIVER, BY RECEPTION AND RETENTION OF THE DOCUMENT, ACCEPTS THE DOCUMENTS IN CONFIDENCE AND AGREES THAT, EXCEPT AS AUTHORIZED IN WRITING BY BOBCAT COMPANY, IT WILL (1) NOT USE THE DOCUMENT OR ANY COPY THEREOF OR THE CONFIDENTIAL OR TRADE SECRET INFORMATION THEREIN; (2) NOT COPY THE DOCUMENT, (3) NOT DISCLOSE TO OTHERS EITHER THE DOCUMENT OR THE CONFIDENTIAL OR TRADE SECRET INFORMATION THEREIN; AND (4) UPON COMPLETION OF THE NEED TO RETAIN THE DOCUMENT, OR UPON DEMAND, RETURN THE DOCUMENT, ALL COPIES THEREOF, AND ALL MATERIALS COPIED THEREFROM.</p>	<p>MM[INCH]</p> <p>UNLESS OTHERWISE SPECIFIED MACHINED SURFACE MAX. ROUGHNESS 125 μin / 3.2 μm</p>		<p>TOLERANCES</p> <p>UNLESS OTHERWISE SPECIFIED</p> <p>SEE BOBCAT STANDARD DE-L FOR SHEETMETAL BEND RAD. TOLERANCE</p> <p>X [X.X] ±2.5 [.1] X.X [X.XX] ±1.0 [.04] X.XX [X.XXX] ±.25 [.010]</p> <p>ANGULAR ±1° FILLETS & RADII ±1.5 [.06]</p>	
	<p>THIRD ANGLE PROJECTION</p>	<p>WELD SYMBOLS PER ANSI/AWS A2.4</p>	<p>Bobcat Company</p> <p>WEST FARGO, NORTH DAKOTA, USA</p>	
	<p>CHARACTERS) OR <TEXT> PER BOBCAT STD PR-AH</p>		<p>INITIAL ECN: . TITLE: MEISTERBOCK MACH</p>	
	<p>MATL NPDQ_1011_2</p> <p>ALT .</p> <p>MATL .</p> <p>TREAT .</p> <p>HARD .</p>	<p>WT 1035.84 lb 469.852 kg</p>	<p>S/A 16434.20 in² 106027.08 cm²</p>	<p>SHT DWG. NO. 6/15 NPDQ_1011</p>

0			DPR	
REV	DESCRIPTION	CHG NOTICE	DWN	SHEET

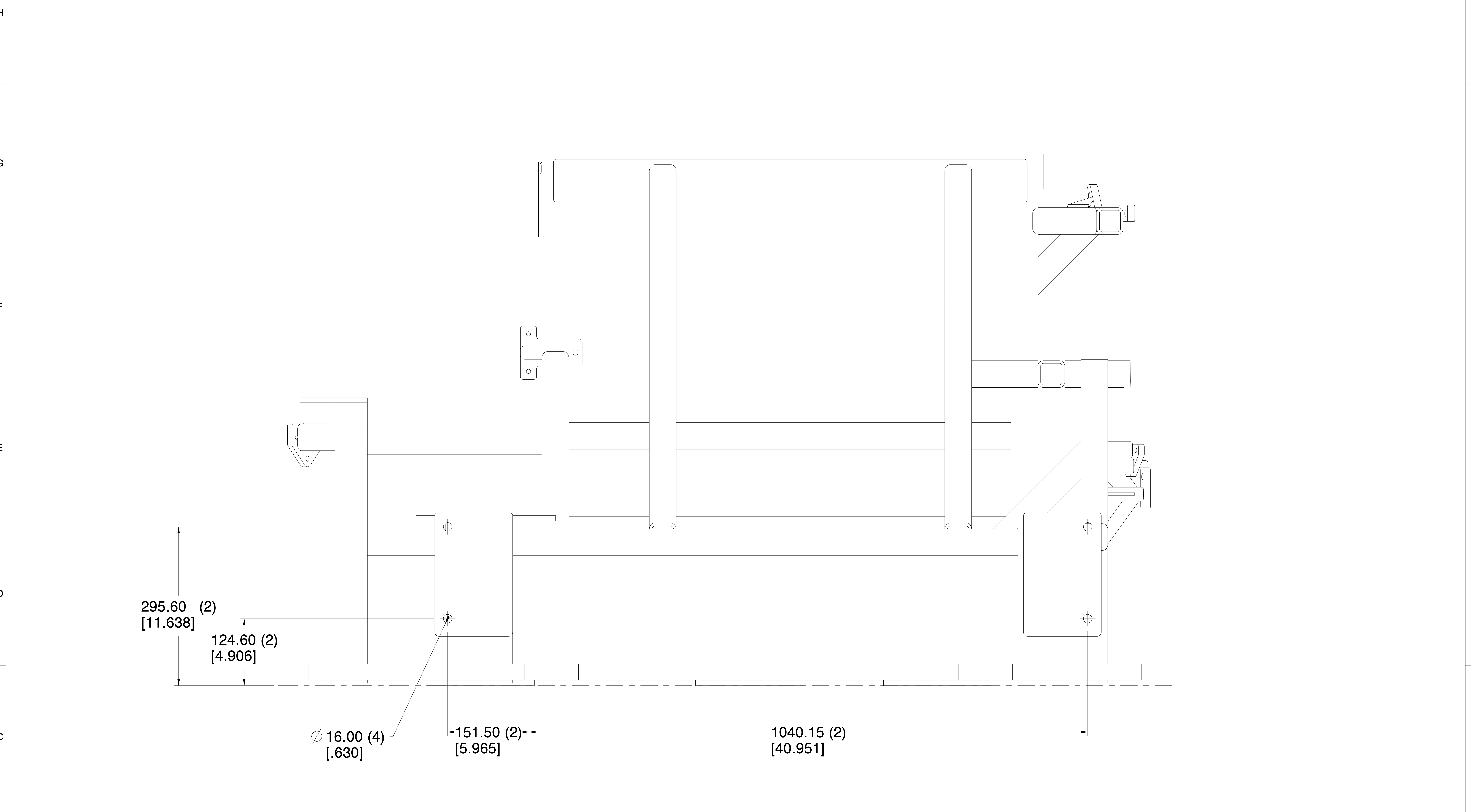
8 7 6 5 4 3 2 1



<p>WARNING</p> <p>THE EXPORT OR REEXPORT OF THIS DRAWING OR A PRODUCT PRODUCED BY THIS DRAWING IS SUBJECT TO U.S. EXPORT ADMINISTRATION REGULATIONS AND OTHER APPLICABLE GOVERNMENTAL RESTRICTIONS OR REGULATIONS.</p> <p>COPYRIGHT</p> <p>ORIGINALLY CREATED AND REVISED IN THE YEARS AS IDENTIFIED IN THE RELEASING ECN. BOBCAT COMPANY RESERVES ALL RIGHTS.</p> <p>PROPRIETARY NOTICE</p> <p>THIS DOCUMENT CONTAINS CONFIDENTIAL AND TRADE SECRET INFORMATION, IS THE PROPERTY OF BOBCAT COMPANY, AND IS GIVEN TO THE RECEIVER IN CONFIDENCE. THE RECEIVER, BY RECEPTION AND RETENTION OF THE DOCUMENT, ACCEPTS THE DOCUMENTS IN CONFIDENCE AND AGREES THAT, EXCEPT AS AUTHORIZED IN WRITING BY BOBCAT COMPANY, IT WILL (1) NOT USE THE DOCUMENT OR ANY COPY THEREOF OR THE CONFIDENTIAL OR TRADE SECRET INFORMATION THEREIN; (2) NOT COPY THE DOCUMENT, (3) NOT DISCLOSE TO OTHERS EITHER THE DOCUMENT OR THE CONFIDENTIAL OR TRADE SECRET INFORMATION THEREIN; AND (4) UPON COMPLETION OF THE NEED TO RETAIN THE DOCUMENT, OR UPON DEMAND, RETURN THE DOCUMENT, ALL COPIES THEREOF, AND ALL MATERIALS COPIED THEREFROM.</p>	<p>MM[INCH]</p> <p>UNLESS OTHERWISE SPECIFIED MACHINED SURFACE MAX. ROUGHNESS 125 μin / 3.2 μm</p>		<p>TOLERANCES</p> <p>UNLESS OTHERWISE SPECIFIED</p> <p>SEE BOBCAT STANDARD DE-L FOR SHEETMETAL BEND RAD. TOLERANCE</p> <p>X [X.X] ± 2.5 [.1] X.X [X.XX] ± 1.0 [.04] X.XX [X.XXX] $\pm .25$ [.010]</p> <p>ANGULAR $\pm 1^\circ$ FILLETS & RADII ± 1.5 [.06]</p>	
	<p>THIRD ANGLE PROJECTION</p>	<p>WELD SYMBOLS PER ANSI/AWS A2.4</p>	<p>Bobcat Company</p> <p>WEST FARGO, NORTH DAKOTA, USA</p>	
<p>CHARACTERS) OR <TEXT> PER BOBCAT STD PR-AH</p>		<p>INITIAL ECN: . TITLE: MEISTERBOCK MACH</p>		
<p>MATL NPDQ_1011_2</p>		<p>WT 1035.84 lb 469.852 kg S/A 16434.20 in² 106027.08 cm² SHT 7/15 DWG. NO. NPDQ_1011</p>		

0			DPR
REV	DESCRIPTION	CHG NOTICE	DWN SHEET

8 7 6 5 4 3 2 1



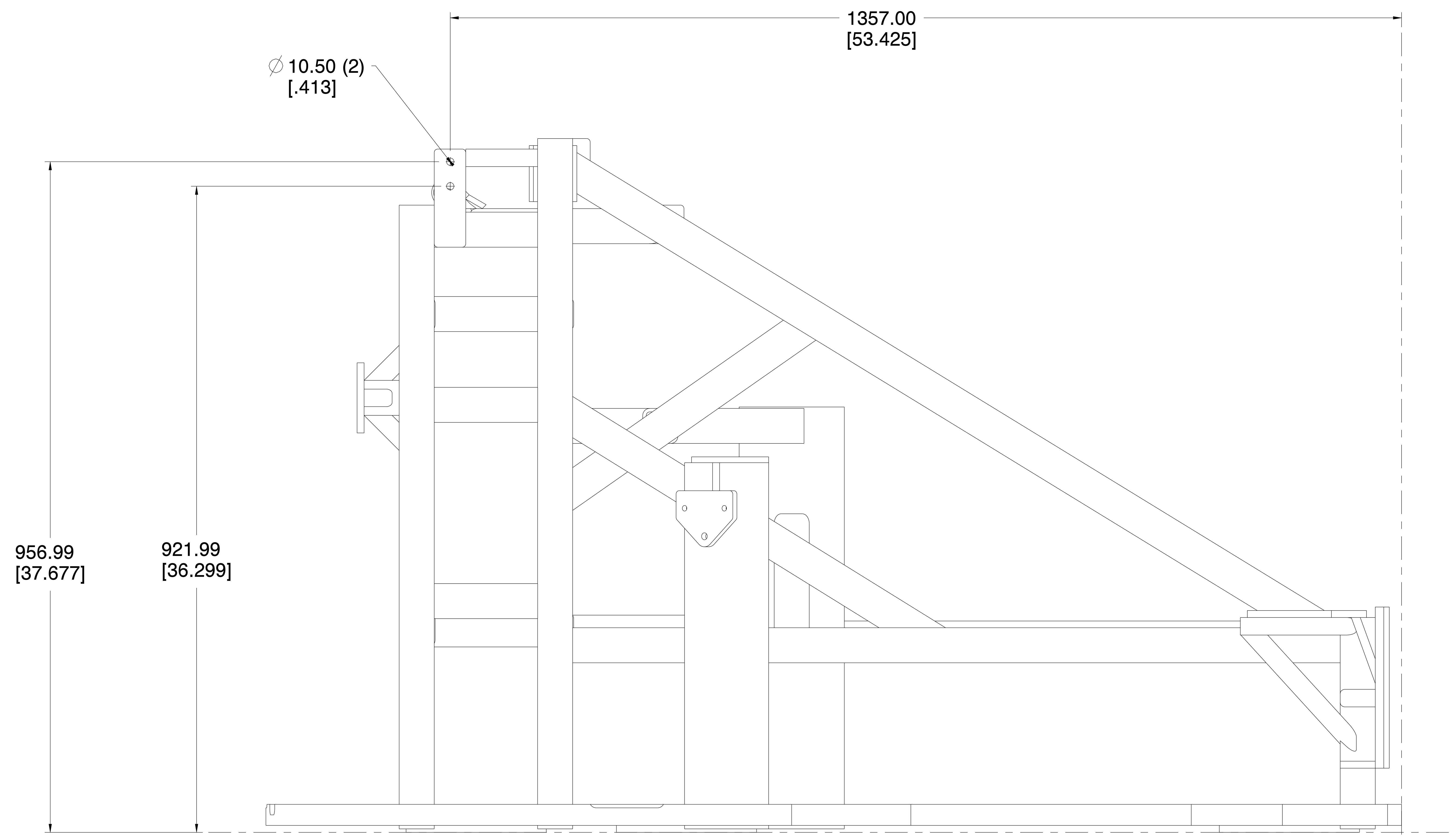
<p>WARNING</p> <p>THE EXPORT OR REEXPORT OF THIS DRAWING OR A PRODUCT PRODUCED BY THIS DRAWING IS SUBJECT TO U.S. EXPORT ADMINISTRATION REGULATIONS AND OTHER APPLICABLE GOVERNMENTAL RESTRICTIONS OR REGULATIONS.</p> <p>COPYRIGHT</p> <p>ORIGINALLY CREATED AND REVISED IN THE YEARS AS IDENTIFIED IN THE RELEASING ECN. BOBCAT COMPANY RESERVES ALL RIGHTS.</p> <p>PROPRIETARY NOTICE</p> <p>THIS DOCUMENT CONTAINS CONFIDENTIAL AND TRADE SECRET INFORMATION, IS THE PROPERTY OF BOBCAT COMPANY, AND IS GIVEN TO THE RECEIVER IN CONFIDENCE. THE RECEIVER, BY RECEPTION AND RETENTION OF THE DOCUMENT, ACCEPTS THE DOCUMENTS IN CONFIDENCE AND AGREES THAT, EXCEPT AS AUTHORIZED IN WRITING BY BOBCAT COMPANY, IT WILL (1) NOT USE THE DOCUMENT OR ANY COPY THEREOF OR THE CONFIDENTIAL OR TRADE SECRET INFORMATION THEREIN; (2) NOT COPY THE DOCUMENT, (3) NOT DISCLOSE TO OTHERS EITHER THE DOCUMENT OR THE CONFIDENTIAL OR TRADE SECRET INFORMATION THEREIN; AND (4) UPON COMPLETION OF THE NEED TO RETAIN THE DOCUMENT, OR UPON DEMAND, RETURN THE DOCUMENT, ALL COPIES THEREOF, AND ALL MATERIALS COPIED THEREFROM.</p>	<p>MM[INCH]</p> <p>UNLESS OTHERWISE SPECIFIED MACHINED SURFACE MAX. ROUGHNESS 125 μin / 3.2 μm</p>		<p>TOLERANCES</p> <p>UNLESS OTHERWISE SPECIFIED</p> <p>SEE BOBCAT STANDARD DE-L FOR SHEETMETAL BEND RAD. TOLERANCE</p> <p>X [X.X] ± 2.5 [.1] X.X [X.XX] ± 1.0 [.04] X.XX [X.XXX] $\pm .25$ [.010]</p> <p>ANGULAR $\pm 1^\circ$ FILLETS & RADII ± 1.5 [.06]</p>	
	<p>THIRD ANGLE PROJECTION</p>		<p>WELD SYMBOLS PER ANSI/AWS A2.4</p>	
	<p>CHARACTERS) OR <TEXT> PER BOBCAT STD PR-AH</p>		<p>Bobcat Company</p> <p>WEST FARGO, NORTH DAKOTA, USA</p>	
	<p>MATL NPDQ_1011_2</p> <p>ALT .</p> <p>TREAT .</p> <p>HARD .</p>		<p>INITIAL ECN: .</p> <p>WT 1035.84 lb / 469.852 kg</p> <p>S/A 16434.20 in² / 106027.08 cm²</p> <p>SHT 8/15</p> <p>DWG. NO. NPDQ_1011</p>	

0			DPR
REV	DESCRIPTION	CHG NOTICE	DWN SHEET

8 7 6 5 4 3 2 1

H
G
F
E
D
C
B
A

H
G
F
E
D
C
B
A

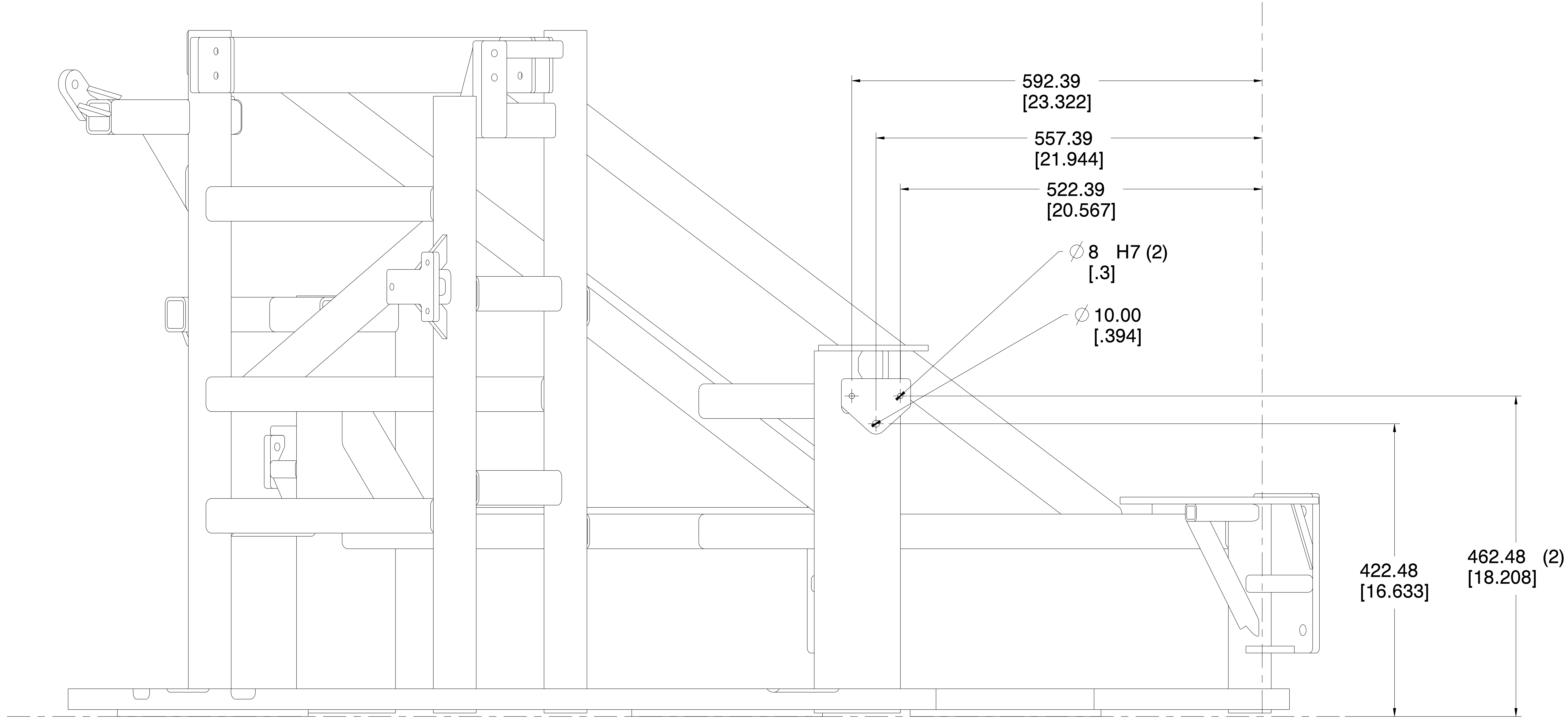


<p>WARNING</p> <p>THE EXPORT OR REEXPORT OF THIS DRAWING OR A PRODUCT PRODUCED BY THIS DRAWING IS SUBJECT TO U.S. EXPORT ADMINISTRATION REGULATIONS AND OTHER APPLICABLE GOVERNMENTAL RESTRICTIONS OR REGULATIONS.</p> <p>COPYRIGHT</p> <p>ORIGINALLY CREATED AND REVISED IN THE YEARS AS IDENTIFIED IN THE RELEASING ECN. BOBCAT COMPANY RESERVES ALL RIGHTS.</p> <p>PROPRIETARY NOTICE</p> <p>THIS DOCUMENT CONTAINS CONFIDENTIAL AND TRADE SECRET INFORMATION, IS THE PROPERTY OF BOBCAT COMPANY, AND IS GIVEN TO THE RECEIVER IN CONFIDENCE. THE RECEIVER, BY RECEPTION AND RETENTION OF THE DOCUMENT, ACCEPTS THE DOCUMENTS IN CONFIDENCE AND AGREES THAT, EXCEPT AS AUTHORIZED IN WRITING BY BOBCAT COMPANY, IT WILL (1) NOT USE THE DOCUMENT OR ANY COPY THEREOF OR THE CONFIDENTIAL OR TRADE SECRET INFORMATION THEREIN; (2) NOT COPY THE DOCUMENT, (3) NOT DISCLOSE TO OTHERS EITHER THE DOCUMENT OR THE CONFIDENTIAL OR TRADE SECRET INFORMATION THEREIN; AND (4) UPON COMPLETION OF THE NEED TO RETAIN THE DOCUMENT, OR UPON DEMAND, RETURN THE DOCUMENT, ALL COPIES THEREOF, AND ALL MATERIALS COPIED THEREFROM.</p>	<p>E MM[INCH]</p> <p>UNLESS OTHERWISE SPECIFIED MACHINED SURFACE MAX. ROUGHNESS 125 μin / 3.2 μm</p>		<p>TOLERANCES</p> <p>UNLESS OTHERWISE SPECIFIED</p> <p>SEE BOBCAT STANDARD DE-L FOR SHEETMETAL BEND RAD. TOLERANCE</p> <p>X [X.X] ±2.5 [.1] X.X [X.XX] ±1.0 [.04] X.XX [X.XXX] ±.25 [.010]</p> <p>ANGULAR ±1° FILLETS & RADII ±1.5 [.06]</p>	
	<p>THIRD ANGLE PROJECTION</p>	<p>WELD SYMBOLS PER ANSI/AWS A2.4</p>	<p>Bobcat Company</p> <p>WEST FARGO, NORTH DAKOTA, USA</p>	
<p>CHARACTERS) OR <TEXT > PER BOBCAT STD PR-AH</p>		<p>INITIAL ECN: . TITLE: MEISTERBOCK MACH</p>		
<p>MATL NPDQ_1011_2</p> <p>ALT .</p> <p>MATL .</p> <p>TREAT .</p> <p>HARD .</p>		<p>WT 1035.84 lb 469.852 kg</p>	<p>S/A 16434.20 in² 106027.08 cm²</p>	<p>SHT 9/15</p> <p>DWG. NO. NPDQ_1011</p>

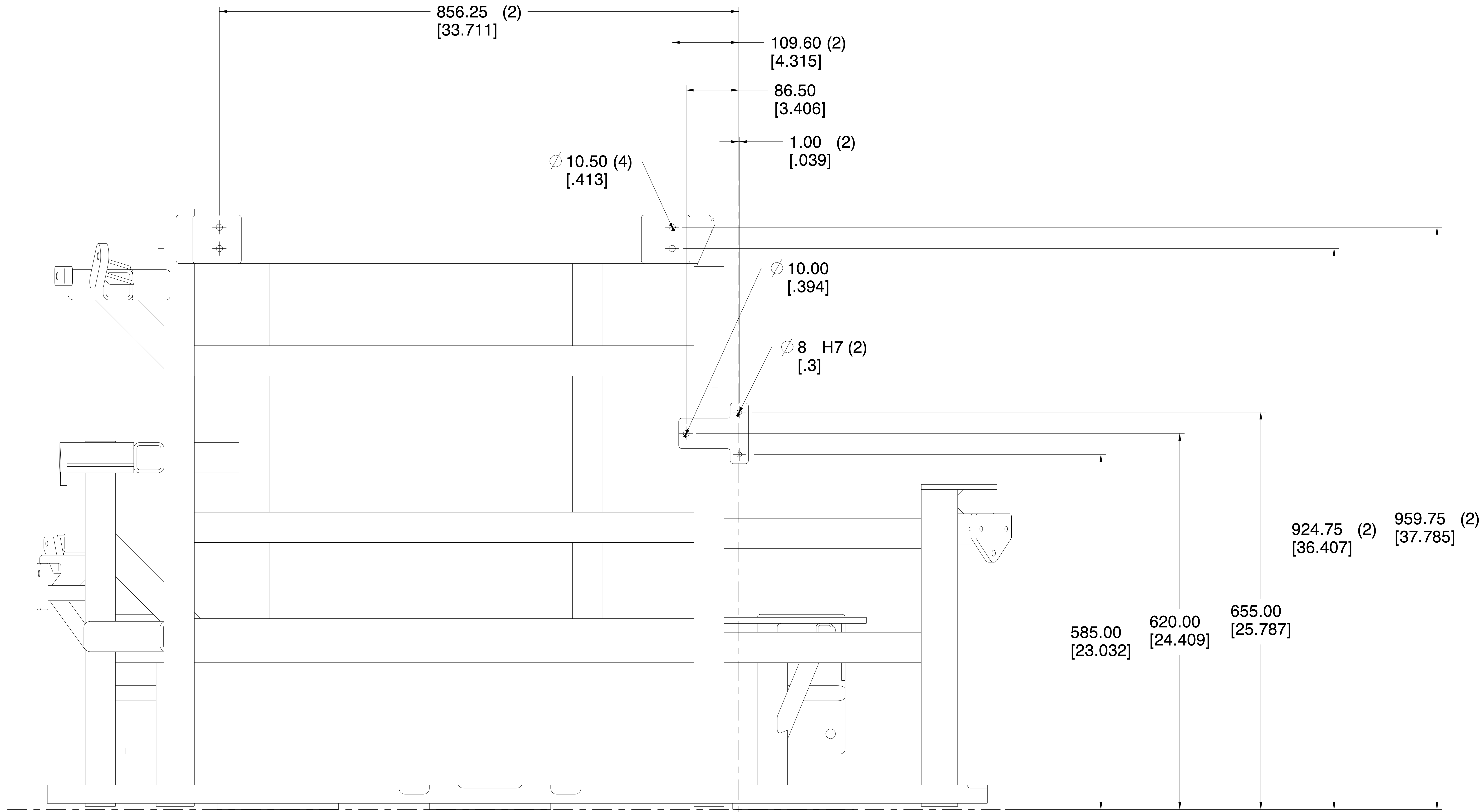
0			DPR	
REV	DESCRIPTION	CHG NOTICE	DWN	SHEET

8 7 6 5 4 3 2 1

0			DPR
REV	DESCRIPTION	CHG NOTICE	DWN SHEET



<p>WARNING</p> <p>THE EXPORT OR REEXPORT OF THIS DRAWING OR A PRODUCT PRODUCED BY THIS DRAWING IS SUBJECT TO U.S. EXPORT ADMINISTRATION REGULATIONS AND OTHER APPLICABLE GOVERNMENTAL RESTRICTIONS OR REGULATIONS.</p> <p>COPYRIGHT</p> <p>ORIGINALLY CREATED AND REVISED IN THE YEARS AS IDENTIFIED IN THE RELEASING ECN. BOBCAT COMPANY RESERVES ALL RIGHTS.</p> <p>PROPRIETARY NOTICE</p> <p>THIS DOCUMENT CONTAINS CONFIDENTIAL AND TRADE SECRET INFORMATION, IS THE PROPERTY OF BOBCAT COMPANY, AND IS GIVEN TO THE RECEIVER IN CONFIDENCE. THE RECEIVER, BY RECEPTION AND RETENTION OF THE DOCUMENT, ACCEPTS THE DOCUMENTS IN CONFIDENCE AND AGREES THAT, EXCEPT AS AUTHORIZED IN WRITING BY BOBCAT COMPANY, IT WILL (1) NOT USE THE DOCUMENT OR ANY COPY THEREOF OR THE CONFIDENTIAL OR TRADE SECRET INFORMATION THEREIN; (2) NOT COPY THE DOCUMENT, (3) NOT DISCLOSE TO OTHERS EITHER THE DOCUMENT OR THE CONFIDENTIAL OR TRADE SECRET INFORMATION THEREIN; AND (4) UPON COMPLETION OF THE NEED TO RETAIN THE DOCUMENT, OR UPON DEMAND, RETURN THE DOCUMENT, ALL COPIES THEREOF, AND ALL MATERIALS COPIED THEREFROM.</p>	<p>E MM[INCH]</p>		<p>TOLERANCES</p>	
	<p>UNLESS OTHERWISE SPECIFIED MACHINED SURFACE MAX. ROUGHNESS 125 µin / 3.2 µm</p>		<p>UNLESS OTHERWISE SPECIFIED</p>	
	<p>THIRD ANGLE PROJECTION</p>		<p>WELD SYMBOLS PER ANSI/AWS A2.4</p>	
	<p>CHARACTERS) OR <TEXT> PER BOBCAT STD PR-AH</p>		<p>SEE BOBCAT STANDARD DE-L FOR SHEETMETAL BEND RAD. TOLERANCE</p> <p>X [X.X] ±2.5 [.1] X.X [X.XX] ±1.0 [.04] X.XX [X.XXX] ±.25 [.010]</p> <p>ANGULAR ±1° FILLETS & RADII ±1.5 [.06]</p>	
<p>MATL NPDQ_1011_2</p> <p>ALT .</p> <p>TREAT .</p> <p>HARD .</p>		<p>Bobcat Company</p> <p>WEST FARGO, NORTH DAKOTA, USA</p>		
<p>INITIAL ECN: .</p>		<p>TITLE: MEISTERBOCK MACH</p>		
<p>WT 1035.84 lb 469.852 kg</p>		<p>S/A 16434.20 in² 106027.08 cm²</p>		
		<p>SHT DWG. NO. 10/15 NPDQ_1011 1</p>		



<p>WARNING</p> <p>THE EXPORT OR REEXPORT OF THIS DRAWING OR A PRODUCT PRODUCED BY THIS DRAWING IS SUBJECT TO U.S. EXPORT ADMINISTRATION REGULATIONS AND OTHER APPLICABLE GOVERNMENTAL RESTRICTIONS OR REGULATIONS.</p> <p>COPYRIGHT</p> <p>ORIGINALLY CREATED AND REVISED IN THE YEARS AS IDENTIFIED IN THE RELEASING ECN. BOBCAT COMPANY RESERVES ALL RIGHTS.</p> <p>PROPRIETARY NOTICE</p> <p>THIS DOCUMENT CONTAINS CONFIDENTIAL AND TRADE SECRET INFORMATION, IS THE PROPERTY OF BOBCAT COMPANY, AND IS GIVEN TO THE RECEIVER IN CONFIDENCE. THE RECEIVER, BY RECEPTION AND RETENTION OF THE DOCUMENT, ACCEPTS THE DOCUMENTS IN CONFIDENCE AND AGREES THAT, EXCEPT AS AUTHORIZED IN WRITING BY BOBCAT COMPANY, IT WILL (1) NOT USE THE DOCUMENT OR ANY COPY THEREOF OR THE CONFIDENTIAL OR TRADE SECRET INFORMATION THEREIN; (2) NOT COPY THE DOCUMENT, (3) NOT DISCLOSE TO OTHERS EITHER THE DOCUMENT OR THE CONFIDENTIAL OR TRADE SECRET INFORMATION THEREIN; AND (4) UPON COMPLETION OF THE NEED TO RETAIN THE DOCUMENT, OR UPON DEMAND, RETURN THE DOCUMENT, ALL COPIES THEREOF, AND ALL MATERIALS COPIED THEREFROM.</p>	<p>MM[INCH]</p> <p>UNLESS OTHERWISE SPECIFIED MACHINED SURFACE MAX. ROUGHNESS 125 μin / 3.2 μm</p>		<p>TOLERANCES</p> <p>UNLESS OTHERWISE SPECIFIED</p> <p>SEE BOBCAT STANDARD DE-L FOR SHEETMETAL BEND RAD. TOLERANCE</p> <p>X [X.X] \pm2.5 [.1] X.X [X.XX] \pm1.0 [.04] X.XX [X.XXX] \pm.25 [.010]</p> <p>ANGULAR \pm1° FILLETS & RADII \pm1.5 [.06]</p>	
	<p>THIRD ANGLE PROJECTION</p>		<p>WELD SYMBOLS PER ANSI/AWS A2.4</p>	
	<p>CHARACTERS) OR <TEXT> PER BOBCAT STD PR-AH</p>		<p>Bobcat Company</p> <p>WEST FARGO, NORTH DAKOTA, USA</p>	
	<p>MATL NPDQ_1011_2</p> <p>ALT .</p> <p>MATL .</p> <p>TREAT .</p> <p>HARD .</p>		<p>INITIAL ECN: .</p> <p>WT 1035.84 lb / 469.852 kg</p> <p>S/A 16434.20 in² / 106027.08 cm²</p> <p>SHT 11/15</p> <p>DWG. NO. NPDQ_1011</p>	

0			DPR
REV	DESCRIPTION	CHG NOTICE	DWN SHEET

H

G

F

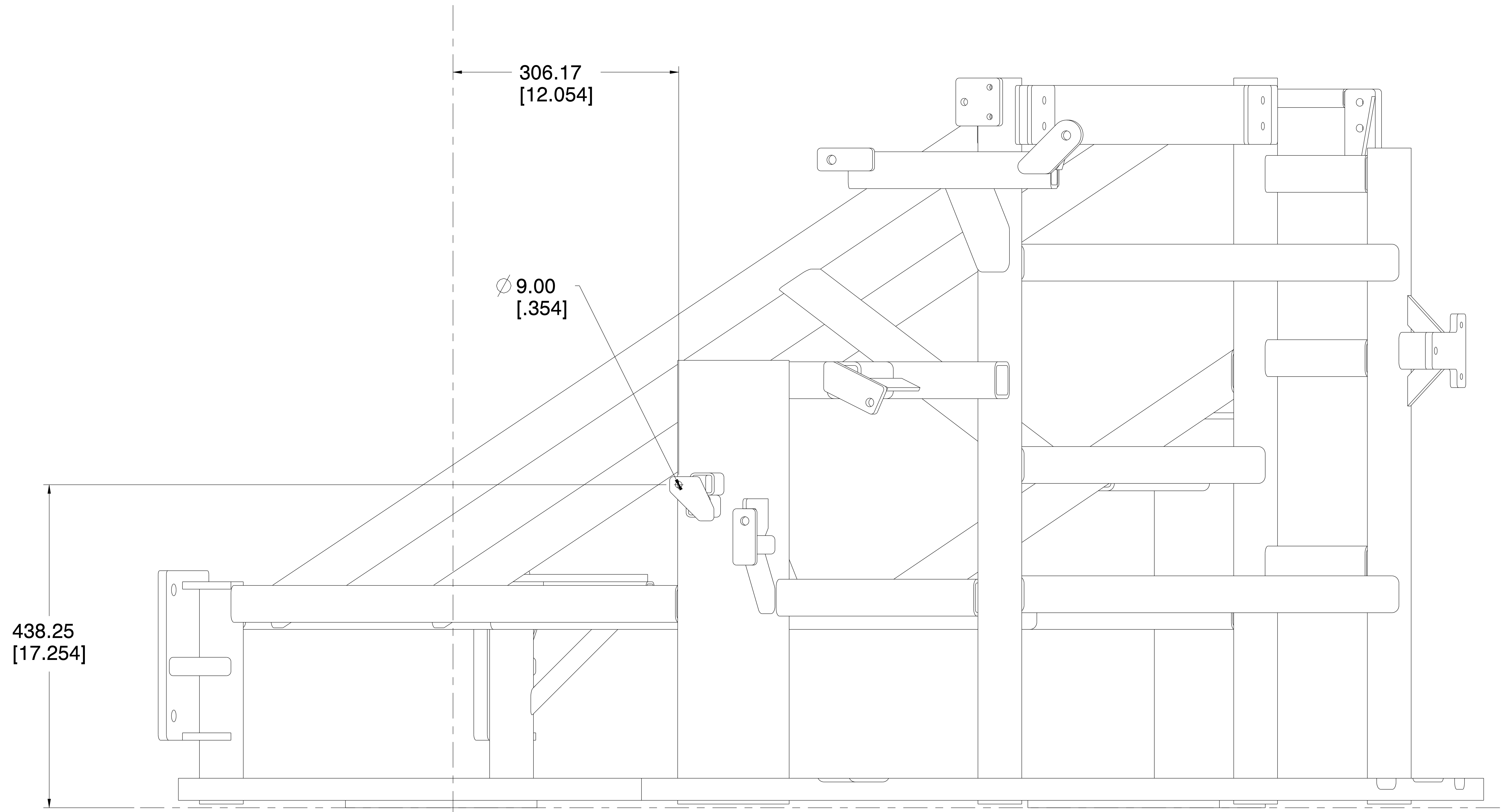
E

D

C

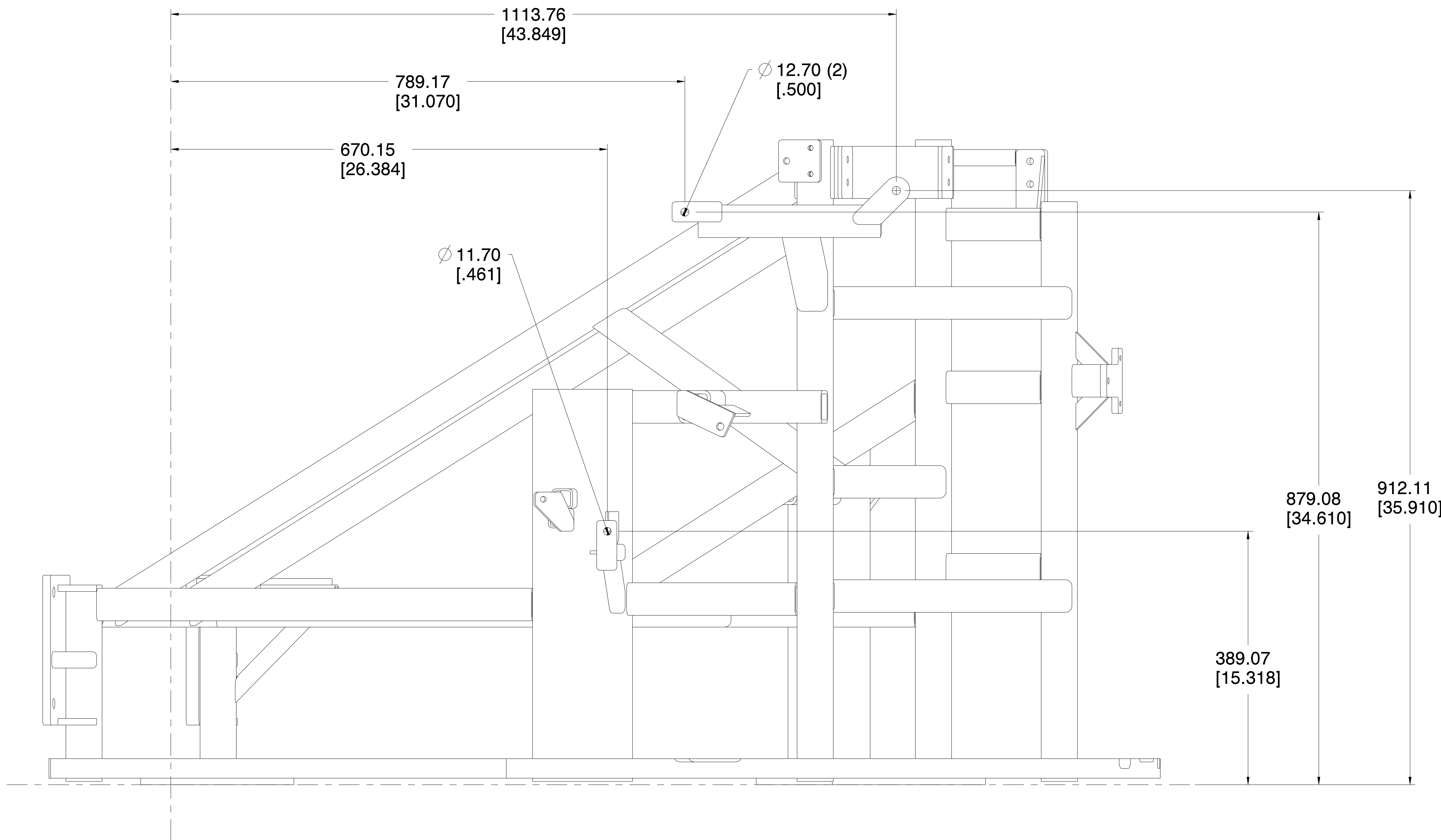
B

A



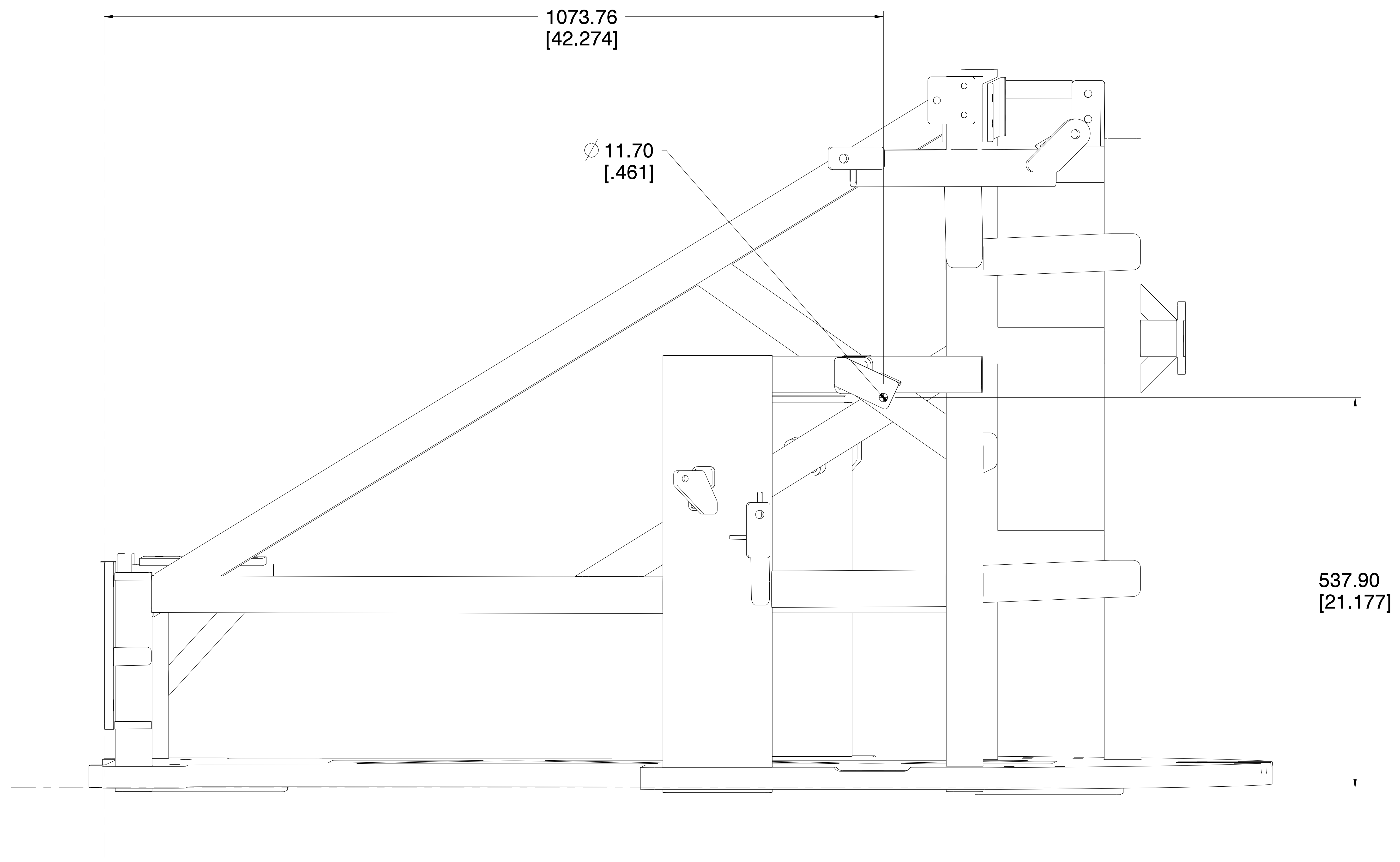
<p>WARNING</p> <p>THE EXPORT OR REEXPORT OF THIS DRAWING OR A PRODUCT PRODUCED BY THIS DRAWING IS SUBJECT TO U.S. EXPORT ADMINISTRATION REGULATIONS AND OTHER APPLICABLE GOVERNMENTAL RESTRICTIONS OR REGULATIONS.</p> <p>COPYRIGHT</p> <p>ORIGINALLY CREATED AND REVISED IN THE YEARS AS IDENTIFIED IN THE RELEASING ECN. BOBCAT COMPANY RESERVES ALL RIGHTS.</p> <p>PROPRIETARY NOTICE</p> <p>THIS DOCUMENT CONTAINS CONFIDENTIAL AND TRADE SECRET INFORMATION, IS THE PROPERTY OF BOBCAT COMPANY, AND IS GIVEN TO THE RECEIVER IN CONFIDENCE. THE RECEIVER, BY RECEPTION AND RETENTION OF THE DOCUMENT, ACCEPTS THE DOCUMENTS IN CONFIDENCE AND AGREES THAT, EXCEPT AS AUTHORIZED IN WRITING BY BOBCAT COMPANY, IT WILL (1) NOT USE THE DOCUMENT OR ANY COPY THEREOF OR THE CONFIDENTIAL OR TRADE SECRET INFORMATION THEREIN; (2) NOT COPY THE DOCUMENT, (3) NOT DISCLOSE TO OTHERS EITHER THE DOCUMENT OR THE CONFIDENTIAL OR TRADE SECRET INFORMATION THEREIN; AND (4) UPON COMPLETION OF THE NEED TO RETAIN THE DOCUMENT, OR UPON DEMAND, RETURN THE DOCUMENT, ALL COPIES THEREOF, AND ALL MATERIALS COPIED THEREFROM.</p>	<p>MM[INCH]</p> <p>UNLESS OTHERWISE SPECIFIED MACHINED SURFACE MAX. ROUGHNESS 125 μin / 3.2 μm</p>		<p>TOLERANCES</p> <p>UNLESS OTHERWISE SPECIFIED</p> <p>SEE BOBCAT STANDARD DE-L FOR SHEETMETAL BEND RAD. TOLERANCE</p> <p>X [X.X] ±2.5 [.1] X.X [X.XX] ±1.0 [.04] X.XX [X.XXX] ±.25 [.010]</p> <p>ANGULAR ±1° FILLETS & RADII ±1.5 [.06]</p>	
	<p>THIRD ANGLE PROJECTION</p>	<p>WELD SYMBOLS PER ANSI/AWS A2.4</p>	<p>Bobcat Company</p> <p>WEST FARGO, NORTH DAKOTA, USA</p>	
	<p>CHARACTERS) OR <TEXT > PER BOBCAT STD PR-AH</p>		<p>INITIAL ECN: . TITLE: MEISTERBOCK MACH</p>	
<p>MATL NPDQ_1011_2</p> <p>ALT .</p> <p>MATL .</p> <p>TREAT .</p> <p>HARD .</p>	<p>WT 1035.84 lb 469.852 kg</p>	<p>S/A 16434.20 in² 106027.08 cm²</p>	<p>SHT 12/15</p>	<p>DWG. NO. NPDQ_1011</p>

0			DPR	
REV	DESCRIPTION	CHG NOTICE	DWN	SHEET



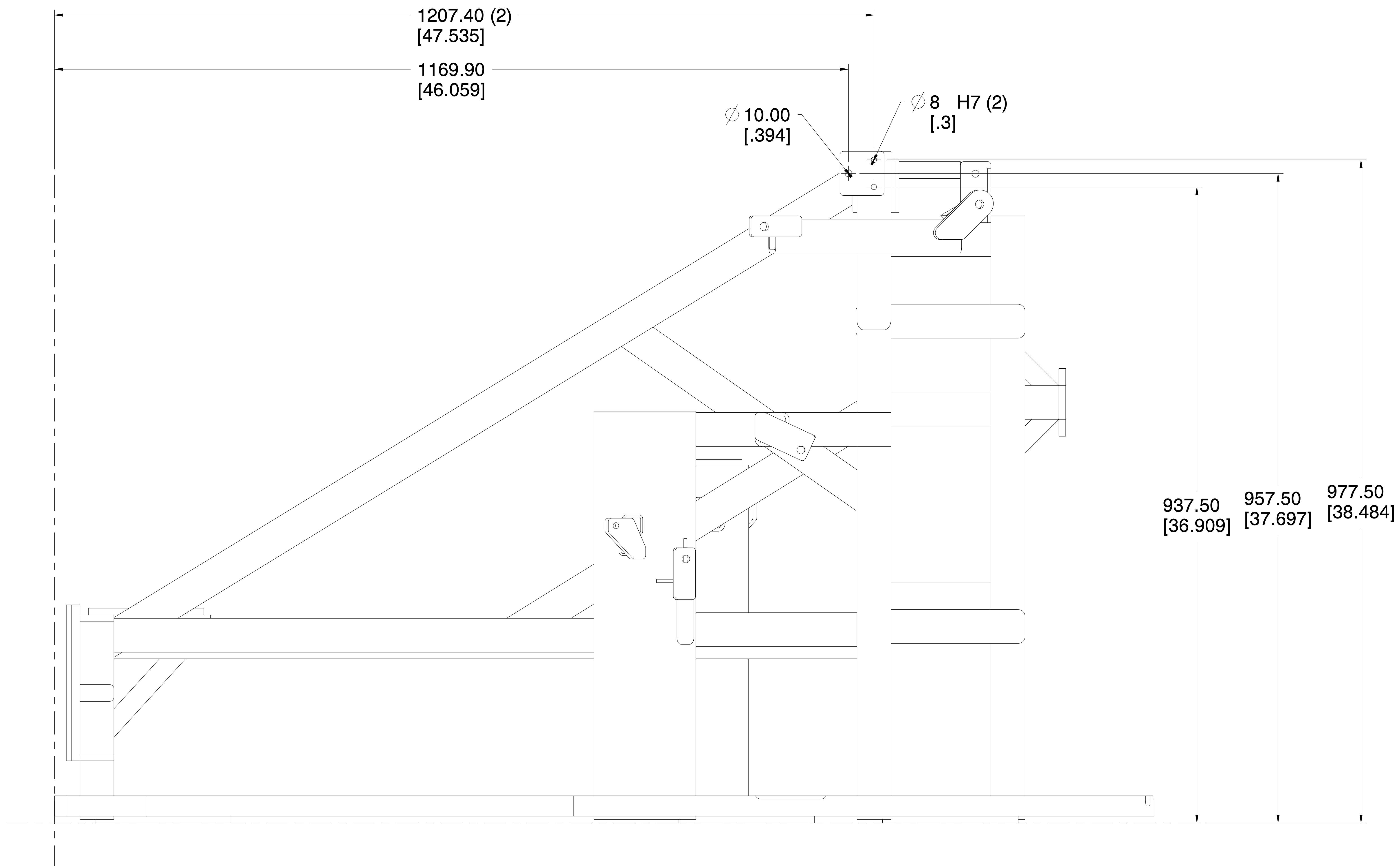
<p>WARNING</p> <p>THE EXPORT OR REEXPORT OF THIS DRAWING OR A PRODUCT PRODUCED BY THIS DRAWING IS SUBJECT TO U.S. EXPORT ADMINISTRATION REGULATIONS AND OTHER APPLICABLE GOVERNMENTAL RESTRICTIONS OR REGULATIONS.</p> <p>COPYRIGHT</p> <p>ORIGINALLY CREATED AND REVISED IN THE YEARS AS IDENTIFIED IN THE RELEASING ECN. BOBCAT COMPANY RESERVES ALL RIGHTS.</p> <p>PROPRIETARY NOTICE</p> <p>THIS DOCUMENT CONTAINS CONFIDENTIAL AND TRADE SECRET INFORMATION, IS THE PROPERTY OF BOBCAT COMPANY, AND IS GIVEN TO THE RECEIVER IN CONFIDENCE. THE RECEIVER, BY RECEPTION AND RETENTION OF THE DOCUMENT, ACCEPTS THE DOCUMENTS IN CONFIDENCE AND AGREES THAT, EXCEPT AS AUTHORIZED IN WRITING BY BOBCAT COMPANY, IT WILL (1) NOT USE THE DOCUMENT OR ANY COPY THEREOF OR THE CONFIDENTIAL OR TRADE SECRET INFORMATION THEREIN; (2) NOT COPY THE DOCUMENT, (3) NOT DISCLOSE TO OTHERS EITHER THE DOCUMENT OR THE CONFIDENTIAL OR TRADE SECRET INFORMATION THEREIN; AND (4) UPON COMPLETION OF THE NEED TO RETAIN THE DOCUMENT, OR UPON DEMAND, RETURN THE DOCUMENT, ALL COPIES THEREOF, AND ALL MATERIALS COPIED THEREFROM.</p>	<p>MM[INCH]</p> <p>UNLESS OTHERWISE SPECIFIED MACHINED SURFACE MAX. ROUGHNESS 125 μin / 3.2 μm</p>		<p>TOLERANCES</p> <p>UNLESS OTHERWISE SPECIFIED</p> <p>SEE BOBCAT STANDARD DE-L FOR SHEETMETAL BEND RAD. TOLERANCE</p> <p>X [X.X] ±2.5 [.1] X.X [X.XX] ±1.0 [.04] X.XX [X.XXX] ±.25 [.010]</p> <p>ANGULAR ±1° FILLETES & RADII ±1.5 [.06]</p>	
	<p>THIRD ANGLE PROJECTION</p>	<p>WELD SYMBOLS PER ANSI/AWS A2.4</p>	<p>Bobcat Company</p> <p>WEST FARGO, NORTH DAKOTA, USA</p>	
<p>CHARACTERS) OR <TEXT> PER BOBCAT STD PR-AH</p>		<p>INITIAL ECN: . TITLE: MEISTERBOCK MACH</p>		
<p>MATL NPDQ_1011_2</p> <p>ALT .</p> <p>MATL .</p> <p>TREAT .</p> <p>HARD .</p>		<p>WT 1035.84 lb 469.852 kg</p>	<p>S/A 16434.20 in² 106027.08 cm²</p>	<p>SHT 13/15</p> <p>DWG. NO. NPDQ_1011</p>

0			DPR	
REV	DESCRIPTION	CHG NOTICE	DWN	SHEET



<p>WARNING</p> <p>THE EXPORT OR REEXPORT OF THIS DRAWING OR A PRODUCT PRODUCED BY THIS DRAWING IS SUBJECT TO U.S. EXPORT ADMINISTRATION REGULATIONS AND OTHER APPLICABLE GOVERNMENTAL RESTRICTIONS OR REGULATIONS.</p> <p>COPYRIGHT</p> <p>ORIGINALLY CREATED AND REVISED IN THE YEARS AS IDENTIFIED IN THE RELEASING ECN. BOBCAT COMPANY RESERVES ALL RIGHTS.</p> <p>PROPRIETARY NOTICE</p> <p>THIS DOCUMENT CONTAINS CONFIDENTIAL AND TRADE SECRET INFORMATION, IS THE PROPERTY OF BOBCAT COMPANY, AND IS GIVEN TO THE RECEIVER IN CONFIDENCE. THE RECEIVER, BY RECEPTION AND RETENTION OF THE DOCUMENT, ACCEPTS THE DOCUMENTS IN CONFIDENCE AND AGREES THAT, EXCEPT AS AUTHORIZED IN WRITING BY BOBCAT COMPANY, IT WILL (1) NOT USE THE DOCUMENT OR ANY COPY THEREOF OR THE CONFIDENTIAL OR TRADE SECRET INFORMATION THEREIN; (2) NOT COPY THE DOCUMENT, (3) NOT DISCLOSE TO OTHERS EITHER THE DOCUMENT OR THE CONFIDENTIAL OR TRADE SECRET INFORMATION THEREIN; AND (4) UPON COMPLETION OF THE NEED TO RETAIN THE DOCUMENT, OR UPON DEMAND, RETURN THE DOCUMENT, ALL COPIES THEREOF, AND ALL MATERIALS COPIED THEREFROM.</p>	<p>MM[INCH]</p> <p>UNLESS OTHERWISE SPECIFIED MACHINED SURFACE MAX. ROUGHNESS 125 µin / 3.2 µm</p>		<p>TOLERANCES</p> <p>UNLESS OTHERWISE SPECIFIED</p> <p>SEE BOBCAT STANDARD DE-L FOR SHEETMETAL BEND RAD. TOLERANCE</p> <p>X [X.X] ±2.5 [.1] X.X [X.XX] ±1.0 [.04] X.XX [X.XXX] ±.25 [.010]</p> <p>ANGULAR ±1° FILLETS & RADII ±1.5 [.06]</p>						
	<p>THIRD ANGLE PROJECTION</p>	<p>WELD SYMBOLS PER ANSI/AWS A2.4</p>	<p>Bobcat Company</p> <p>WEST FARGO, NORTH DAKOTA, USA</p>						
<p>CHARACTERS) OR <TEXT> PER BOBCAT STD PR-AH</p>		<p>INITIAL ECN: .</p>		<p>TITLE: MEISTERBOCK MACH</p>					
MATL	NPDQ_1011_2	WT	1035.84 lb 469.852 kg	S/A	16434.20 in ² 106027.08 cm ²	SHT	14/15	DWG. NO.	NPDQ_1011

0			DPR	
REV	DESCRIPTION	CHG NOTICE	DWN	SHEET



<p>WARNING</p> <p>THE EXPORT OR REEXPORT OF THIS DRAWING OR A PRODUCT PRODUCED BY THIS DRAWING IS SUBJECT TO U.S. EXPORT ADMINISTRATION REGULATIONS AND OTHER APPLICABLE GOVERNMENTAL RESTRICTIONS OR REGULATIONS.</p> <p>COPYRIGHT</p> <p>ORIGINALLY CREATED AND REVISED IN THE YEARS AS IDENTIFIED IN THE RELEASING ECN. BOBCAT COMPANY RESERVES ALL RIGHTS.</p> <p>PROPRIETARY NOTICE</p> <p>THIS DOCUMENT CONTAINS CONFIDENTIAL AND TRADE SECRET INFORMATION, IS THE PROPERTY OF BOBCAT COMPANY, AND IS GIVEN TO THE RECEIVER IN CONFIDENCE. THE RECEIVER, BY RECEPTION AND RETENTION OF THE DOCUMENT, ACCEPTS THE DOCUMENTS IN CONFIDENCE AND AGREES THAT, EXCEPT AS AUTHORIZED IN WRITING BY BOBCAT COMPANY, IT WILL (1) NOT USE THE DOCUMENT OR ANY COPY THEREOF OR THE CONFIDENTIAL OR TRADE SECRET INFORMATION THEREIN; (2) NOT COPY THE DOCUMENT, (3) NOT DISCLOSE TO OTHERS EITHER THE DOCUMENT OR THE CONFIDENTIAL OR TRADE SECRET INFORMATION THEREIN; AND (4) UPON COMPLETION OF THE NEED TO RETAIN THE DOCUMENT, OR UPON DEMAND, RETURN THE DOCUMENT, ALL COPIES THEREOF, AND ALL MATERIALS COPIED THEREFROM.</p>	<p>E MM[INCH]</p> <p>UNLESS OTHERWISE SPECIFIED MACHINED SURFACE MAX. ROUGHNESS 125 μin / 3.2 μm</p>		<p>TOLERANCES</p> <p>UNLESS OTHERWISE SPECIFIED</p> <p>SEE BOBCAT STANDARD DE-L FOR SHEETMETAL BEND RAD. TOLERANCE</p> <p>X [X.X] ± 2.5 [.1] X.X [X.XX] ± 1.0 [.04] X.XX [X.XXX] $\pm .25$ [.010]</p> <p>ANGULAR $\pm 1^\circ$ FILLETS & RADII ± 1.5 [.06]</p>	
	<p>THIRD ANGLE PROJECTION</p>	<p>WELD SYMBOLS PER ANSI/AWS A2.4</p>	<p>Bobcat Company</p> <p>WEST FARGO, NORTH DAKOTA, USA</p>	
<p>CHARACTERS) OR <TEXT> PER BOBCAT STD PR-AH</p>		<p>INITIAL ECN: . TITLE: MEISTERBOCK MACH</p>		
<p>MATL NPDQ_1011_2</p> <p>ALT .</p> <p>MATL .</p> <p>TREAT .</p> <p>HARD .</p>		<p>WT 1035.84 lb 469.852 kg</p>	<p>S/A 16434.20 in² 106027.08 cm²</p>	<p>SHT 15/15</p> <p>DWG. NO. NPDQ_1011</p>

0			DPR	
REV	DESCRIPTION	CHG NOTICE	DWN	SHEET