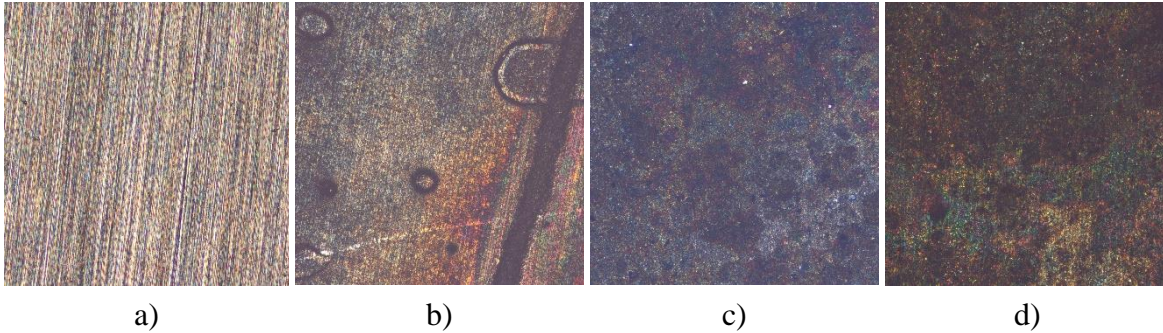


## Appendix E: Detailed Pictures of Specimens Taken with Microscope

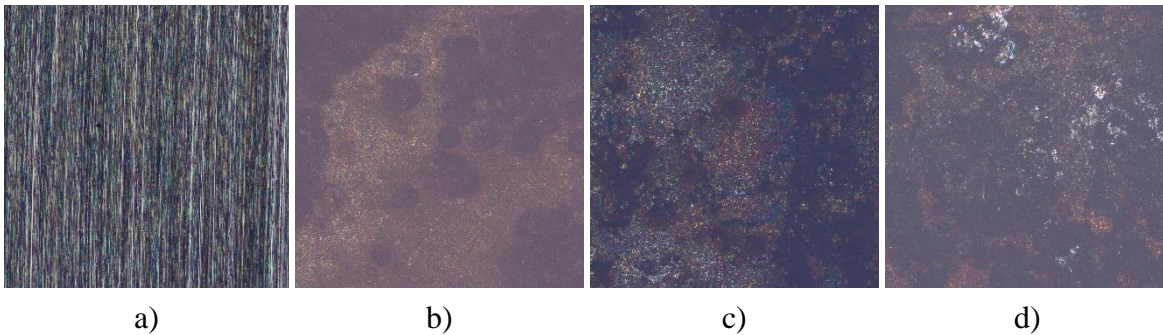
### Figure E1

*Pictures of stainless steel 316L specimens under the microscope with 4x zoom (1670  $\mu\text{m}$  x 1670  $\mu\text{m}$ ): a) before 720 h / 550 °C test, b) after 720 h / 550 °C test, c) after 720 h / 700 °C test, and d) after 2160 h / 550 °C test.*



### Figure E2

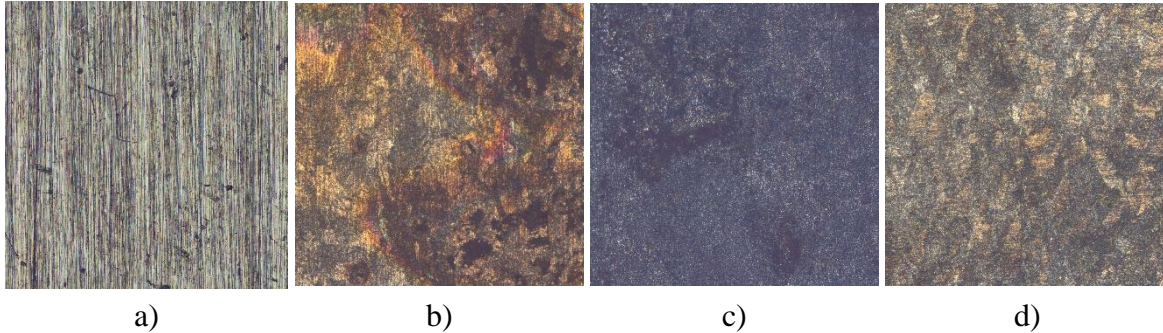
*Pictures of stainless steel EUROFER 97 specimens under the microscope with 4x zoom (1670  $\mu\text{m}$  x 1670  $\mu\text{m}$ ): a) before 720 h / 550 °C test, b) after 720 h / 550 °C test, c) after 720 h / 700 °C test, and d) after 2160 h / 550 °C test.*



## Appendix E: Detailed Pictures of Specimens Taken with Microscope

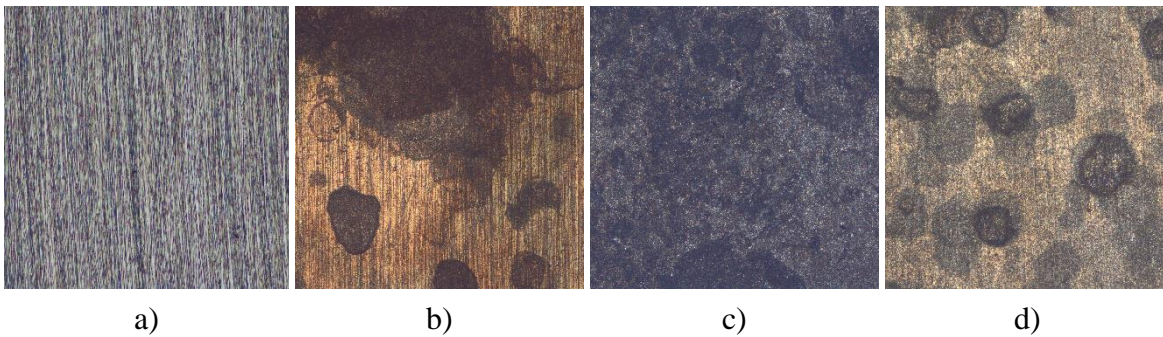
### Figure E3

*Pictures of Incoloy 800HT specimens under the microscope with 4x zoom (1670  $\mu\text{m}$  x 1670  $\mu\text{m}$ ): a) before 720 h / 550  $^{\circ}\text{C}$  test, b) after 720 h / 550  $^{\circ}\text{C}$  test, c) after 720 h / 700  $^{\circ}\text{C}$  test, and d) after 2160 h / 550  $^{\circ}\text{C}$  test.*



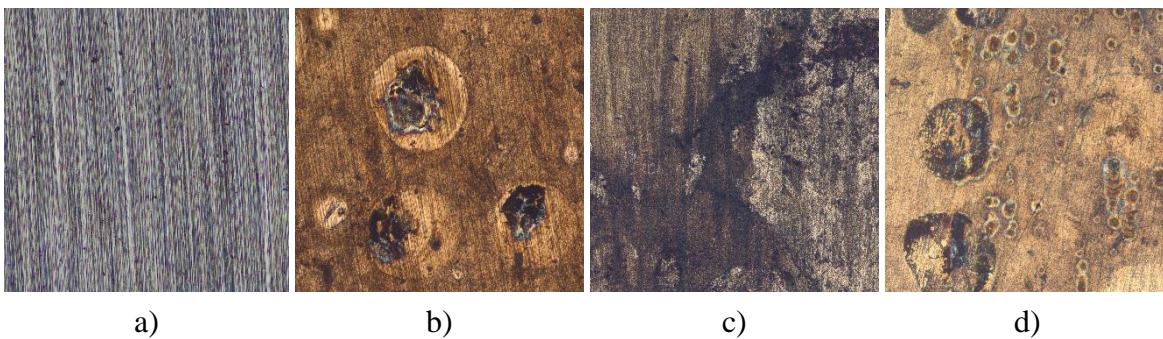
### Figure E4

*Pictures of Inconel 600 specimens under the microscope with 4x zoom (1670  $\mu\text{m}$  x 1670  $\mu\text{m}$ ): a) before 720 h / 550  $^{\circ}\text{C}$  test, b) after 720 h / 550  $^{\circ}\text{C}$  test, c) after 720 h / 700  $^{\circ}\text{C}$  test, and d) after 2160 h / 550  $^{\circ}\text{C}$  test.*



### Figure E5

*Pictures of Inconel 625 specimens under the microscope with 4x zoom (1670  $\mu\text{m}$  x 1670  $\mu\text{m}$ ): a) before 720 h / 550  $^{\circ}\text{C}$  test, b) after 720 h / 550  $^{\circ}\text{C}$  test, c) after 720 h / 700  $^{\circ}\text{C}$  test, and d) after 2160 h / 550  $^{\circ}\text{C}$  test.*

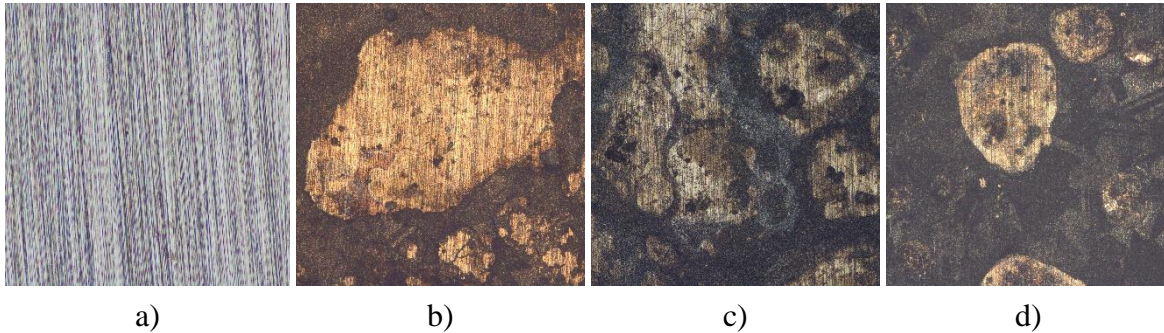




Appendix E: Detailed Pictures of Specimens Taken with Microscope

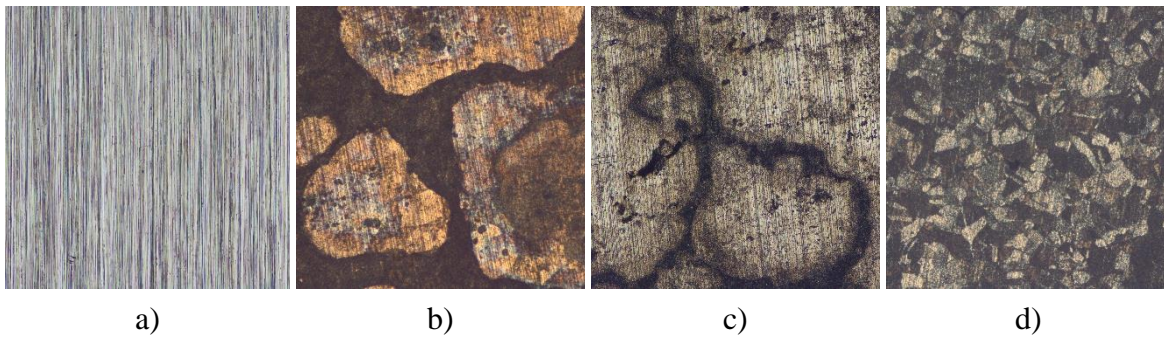
**Figure E6**

*Pictures of MoNiCr specimens under the microscope with 4x zoom (1670  $\mu\text{m}$  x 1670  $\mu\text{m}$ ): a) before 720 h / 550  $^{\circ}\text{C}$  test, b) after 720 h / 550  $^{\circ}\text{C}$  test, c) after 720 h / 700  $^{\circ}\text{C}$  test, and d) after 2160 h / 550  $^{\circ}\text{C}$  test.*



**Figure E7**

*Pictures of MoNiCr sheet specimens under the microscope with 4x zoom (1670  $\mu\text{m}$  x 1670  $\mu\text{m}$ ): a) before 720 h / 550  $^{\circ}\text{C}$  test, b) after 720 h / 550  $^{\circ}\text{C}$  test, c) after 720 h / 700  $^{\circ}\text{C}$  test, and d) after 2160 h / 550  $^{\circ}\text{C}$  test.*



**Figure E8**

*Pictures of HN80MTY specimens under the microscope with 4x zoom (1670  $\mu\text{m}$  x 1670  $\mu\text{m}$ ): a) before 720 h / 550  $^{\circ}\text{C}$  test, b) after 720 h / 550  $^{\circ}\text{C}$  test, c) after 720 h / 700  $^{\circ}\text{C}$  test, and d) after 2160 h / 550  $^{\circ}\text{C}$  test.*

