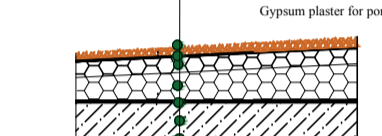


LEGEND OF THE MATERIALS:

- MONOLITHIC REINFORCED CONCRETE. DETERMINATIONS OF CONCRETE STRENGTH CLASS FOR WALLS, C_{30/37}, C = 35 mm, SLAB, C_{25/30}, C = 25 mm FOUNDATIONS, C_{30/37}, C = 50 mm C 23/37, STEEL GRADE B 500 B
- POROTHERM 14 P8 / P10 T = 150 mm PROFILE M 10 NON LOAD BEARING WALL WITH AN ADDITIONAL MORTAR, FIRE RESISTANCE REI 120 DP1, EI 180 DP1, THERMAL RESISTANCE OF MASONRY WITHOUT PLASTER R [m² K / W] 0.51, WEIGHTED LABORATORY SOUND INSULATION R_w [dB] 44.
- POROTHERM 30 P 15 T = 300 mm PROFILE M 10 LOAD BEARING WALL WITH AN ADDITIONAL MORTAR, FIRE RESISTANCE REI 180 DP1, THERMAL RESISTANCE OF MASONRY WITHOUT PLASTER R [m² K / W] 1.211, WEIGHTED LABORATORY SOUND INSULATION R_w [dB] 52.
- XPS AUSTROTHERM 50 XPS-G/030 THERMAL INSULATION BOARD WITH EMBOSSED HONEYCOMB PATTERN ON BOTH SIDES, t = 80mm FOR ALL ROUND THE BUILDING.
- LEVELING CONCRETE IN EACH FLOORING REQUIRED: 80 - 60 mm.
- 2 x 4 mm BITUMEN WATER PROOFING, t = 8mm
- XPS FOR THERMAL INSULATION, t = 200 mm, 170 mm.
- EPS FOR THERMAL INSULATION, t = 170mm, 150 mm 275mm, 100 mm.
- ORIGINAL SOIL WHERE THE STRUCTURE IS BUILT ON IT, WITH GEO-TECHNICAL FORMATION OF SOILS OF SAND WITH BOULDERS AND LOAMY ADMIXTURES.
- BACK FILL SOIL IN WHOLE PART OF THE EXCAVATED

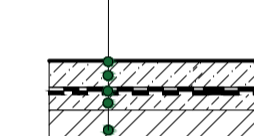
COMPOSITION AC:
 -POROTHERM 30 P15 PROFILE M 10 with an additional mortar.
 -First Layer Adhesive Dektherm Standard, the component is one adhesive cement with amount of 40% and the plate surface is 4kg/msq.
 -Facade polystyrene EPS 70F, high quality and less water absorption capacity which makes a positive functionality.
 -Base Layer with Reinforcing fabric mesh, the amount of glass fiber is 145g/msq and can be implemented by a vertex R117 then penetrated to layer of backfilling DECK THERM STANDARD.
 -Coating under Plaster UNI, the colored primer based on the acrylate dispersion for the uniform absorption and also color of substrate the total consumption is 0.18kg/msq.
 -weber.pas aqua Balance thin plaster . can be implemented very easily workable colored pasty plaster and compressed with organic binder silicone silicate self-cleaning.

COMPOSITION FR:
FLAT ROOF COMPOSITION
 -WASHED RIVER GRAVEL FRACTION 16 tL150 mm
 -FILTEK 300 tL3 mm
 -Elastek 40 (50) special Dekor tL4 (5) mm
 -XPS Styrodur 3000 S tL200mm
 -EPS 200 Incline sloping layer tL150-275mm
 -PARABIT AL + V S35 vapor barrier tL1.5mm
 -Dekprimer asphalt pentration coating tL1.5mm
 -DEKPRIMER is cold processable bituminous emulsion tL2.00mm
 -RC monolithic reinforced concrete slab, C40/50 tL10mm
 -INTERNAL PLASTER WEBER.MUR S
 Gypsum plaster for porous EDGING interior walls and ceilings

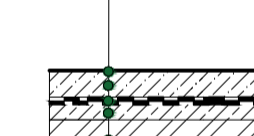


KEY SOLUTIONS OF ALL COMPOSITIONS:

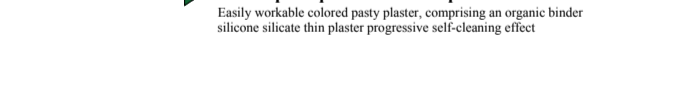
COMPOSITION F1:
SLAB ON GRADE BASEMENT PARKING COMPOSITIONS.
 -BAUTCH CAR PARKING FINISHED tL1.0mm
 -MONOLITHIC RC SLAB tL200mm
 -BITUMEN WATER PROOFING A 500H tL8 mm, 1.02Kgmsq
 -LEVELING CONCRETE tL60mm
 -ORIGINAL SOIL



COMPOSITION F2:
SLAB ON GRADE BASEMENT STAIRCASE COMPOSITIONS.
 - CERAMIC TILES tL1.0mm
 -GLUE tL5mm
 -MONOLITHIC RC SLAB tL200mm
 -BITUMEN WATER PROOFING A 500H tL8 mm, 1.02Kgmsq
 -LEVELING CONCRETE tL80mm
 -ORIGINAL SOIL

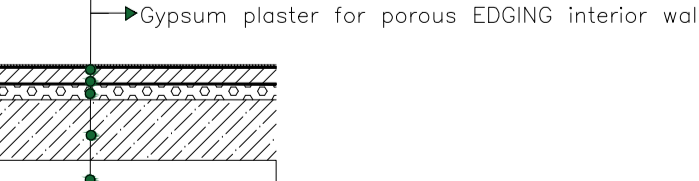


COMPOSITION BW:
BASEMENT WALL COMPOSITIONS.
 -Internal Plaster weber.mur 5 tL15mm
 -Reinforced Concrete wall C30/37 tL130mm
 -2X Bitumen hydroisolation tL110mm
 -First Layer Adhesive Dektherm Standard tL110mm
 -XPS Austrotherm 50 XPS-G/030 tL110mm
 -Thermal insulation board with embossed honeycomb pattern on both side tL110mm
 -Base Layer + Reinforcing fabric mesh tL110mm
 -weber.pas aqua Balance thin plaster tL110mm
 -Coating under Plaster UNI tL15mm

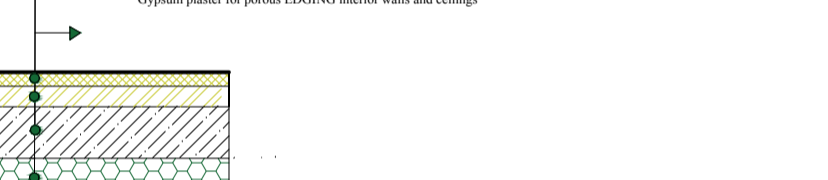


TERRAIN COMPOSITION TC:
 1. PAVEMENT 100 mm
 2. FRACTION BED LAYERS 50mm
 3. FRACTION CRUSHER 100mm
 4. FRACTION CRUSHER 150mm
 5. BACK FILL SOIL

COMPOSITION TF:
TYPICAL FLOOR COMPOSITIONS.
 -PVC plank wooden color tL4mm, 2.2kg/m²
 -weber.floor 4815 tL1.50mm
 -SPREADING CONCRETE SCREED tL1.0.2mm
 -DEKSEPAR blue polyethylene film tL1.50mm
 -Isover EPS RigiFloor 4000 tL1.50mm
 -RC Monolithic Concrete slab C30/37 tL200mm
 -INTERNAL PLASTER WEBER.MUR S tL10mm
 -Gypsum plaster for porous EDGING interior walls and ceilings



COMPOSITION GF:
TYPICAL GROUND FLOOR COMPOSITIONS.
 -PVC plank wooden color tL4mm, 2.2kg/m²
 -weber.floor 4815 tL1.50mm
 -SPREADING CONCRETE SCREED tL1.0.2mm
 -DEKSEPAR blue polyethylene film tL1.50mm
 -Isover EPS RigiFloor 4000 tL1.50mm
 -INTERNAL PLASTER WEBER.MUR S tL10mm
 -Gypsum plaster for porous EDGING interior walls and ceilings



COMPOSITION EW:
EXTERNAL WALLS COMPOSITIONS.
 -Internal Plaster weber.mur 5 tL15mm
 -Porotherm Masonry 30 Profi tL300mm
 -Facade polystyrene EPS 70F, high quality and less water absorption capacity which makes a positive functionality. tL180mm
 -Base Layer + Reinforcing fabric mesh tL16mm
 -Coating under Plaster UNI tL15mm
 -weber.pas aqua Balance thin plaster tL15mm
 -Facade polystyrene EPS 70F, high quality and less water absorption capacity which makes a positive functionality.



COMPOSITION TF:
TYPICAL FLOOR COMPOSITIONS.
 -PVC plank wooden color tL4mm, 2.2kg/m²
 -weber.floor 4815 tL1.50mm
 -SPREADING CONCRETE SCREED tL1.0.2mm
 -DEKSEPAR blue polyethylene film tL1.50mm
 -Isover EPS RigiFloor 4000 tL1.50mm
 -RC Monolithic Concrete slab C30/37 tL200mm
 -INTERNAL PLASTER WEBER.MUR S tL10mm
 -Gypsum plaster for porous EDGING interior walls and ceilings



±0,000 = 192,64 m ASL

DEVELOPED BY: Bc.M. Faryz Youst	CONSULTED: doc. Ing. František Kuthánek CSc.	CONTROLLED: doc. Ing. František Kuthánek CSc.
DRAWN BY: Bc.M. Faryz Youst	CUSTOMER: Faculty of Civil Engineering Czech Technical University In Prague	
General Purpose:		PARE:
Multifunctional building		
Attachment name: Cross-section A-A'		Scale: 1:50 Drawing No. 07

