

Příloha A - Kontrola průtoků a výpočet poměrů průtoků pro všechny modely a varianty

Varianta	Q _{inlet}	Q _{inlets}	Q _{outlet}	Q _{inlet}	Q _{inlets}	Q _{outlet}	dQ	dQ
	[kg/s/dm]	[kg/s/dm]	[kg/s/dm]	[m ³ /s/m]	[m ³ /s/m]	[m ³ /s/m]	[m ³ /s/m]	[%]
A.1.1	152,698	199,400	358,248	1,530	1,998	3,590	-0,062	1,72
A.1.2	-	199,400	205,683	0,000	1,998	2,061	-0,063	3,05
A.2.1	318,398	199,400	515,040	3,190	1,998	5,161	0,028	0,54
A.2.2	-	199,400	195,323	0,000	1,998	1,957	0,041	2,09
A.3.1	463,666	199,400	661,746	4,646	1,998	6,631	0,013	0,20
A.3.2	-	199,400	199,855	0,000	1,998	2,003	-0,005	0,23
A.4.1	586,845	199,400	784,328	5,880	1,998	7,859	0,019	0,24
A.4.2	-	199,400	199,819	0,000	1,998	2,002	-0,004	0,21
B.1.1	151,971	199,400	345,351	1,523	1,998	3,460	0,060	1,74
B.2.1	317,506	199,400	515,181	3,181	1,998	5,162	0,017	0,33
B.3.1	463,410	199,400	659,505	4,643	1,998	6,608	0,033	0,50
B.4.1	588,355	199,400	812,560	5,895	1,998	8,142	-0,249	3,05
C.1.1	152,328	199,400	352,569	1,526	1,998	3,533	-0,008	0,24
C.2.1	317,156	199,400	507,998	3,178	1,998	5,090	0,086	1,68
C.3.1	463,660	199,400	667,295	4,646	1,998	6,686	-0,042	0,63
C.4.1	587,911	199,400	800,098	5,891	1,998	8,017	-0,128	1,60

Tabulka 8 - Kontrola průtoků pro všechny varianty výpočtů

Varianta	Q _{inlet}	Q _{inlets}	Q _{jez} /Q _{savka}
	[m ³ /s/m]	[m ³ /s/m]	[-]
A.1	1,530	1,998	0,77
A.2	3,190		1,60
A.3	4,646		2,33
A.4	5,880		2,94
B.1	1,523		0,76
B.2	3,181		1,59
B.3	4,643		2,32
B.4	5,895		2,95
C.1	1,526		0,76
C.2	3,178		1,59
C.3	4,646		2,33
C.4	5,891		2,95

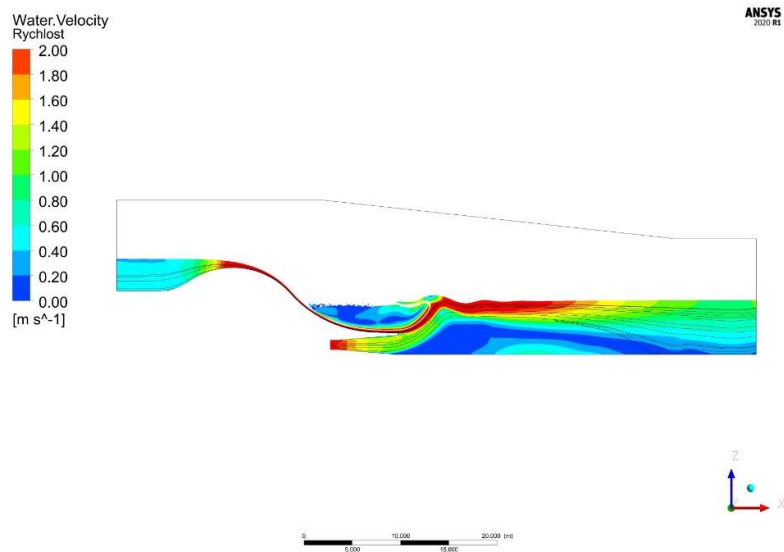
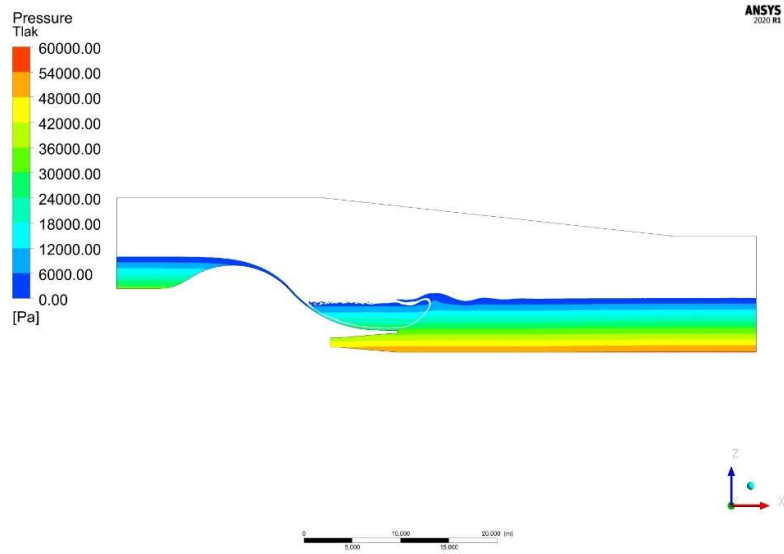
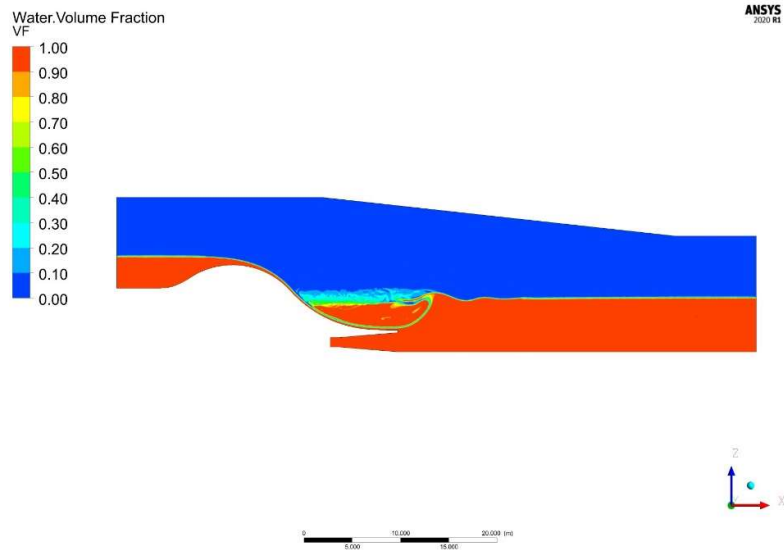
Tabulka 9 - Výpočet poměrů průtoků pro všechny počítané varianty

Příloha B - Získané hodnoty tlaků a vypočtené hloubky pro všechny varianty

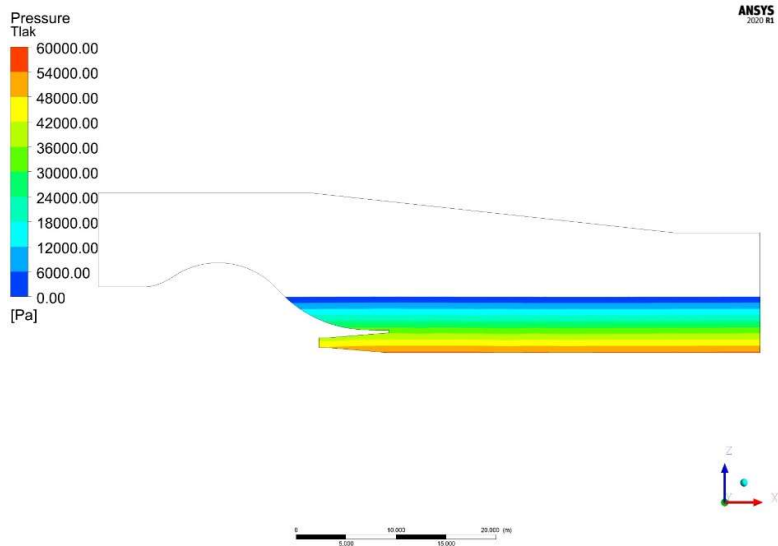
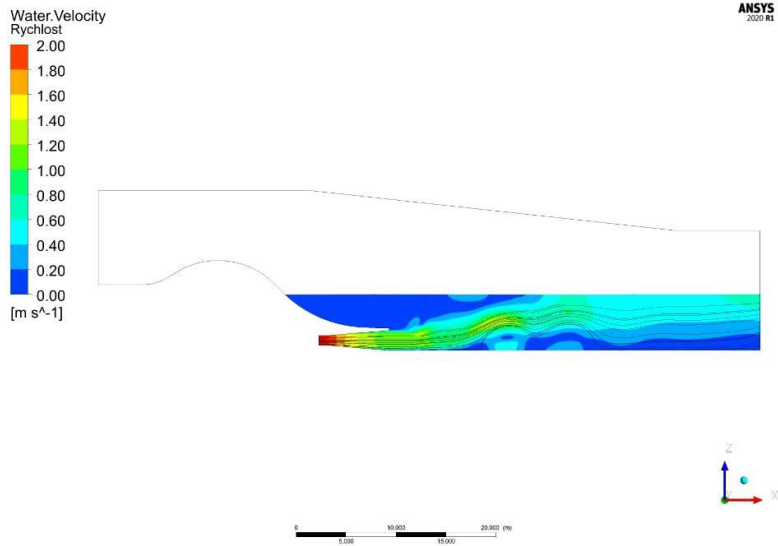
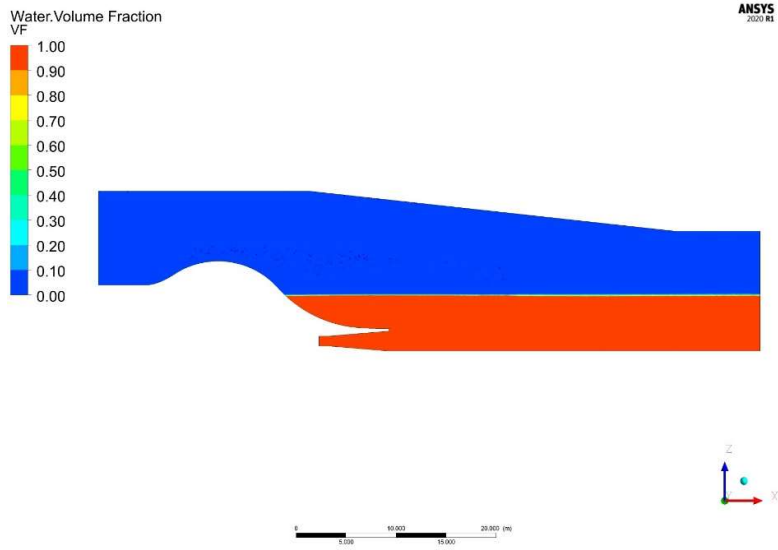
Varianta	P_{Savka}	H_{Savka}
	[Pa]	[m]
A.1.1	44087,6	4,503
A.1.2	45091,6	4,606
A.2.1	46701,3	4,770
A.2.2	48707,8	4,975
A.3.1	49128,8	5,018
A.3.2	51769,7	5,288
A.4.1	50368,5	5,145
A.4.2	54219,7	5,538
B.1.1	44123,2	4,507
B.2.1	47164,2	4,817
B.3.1	49296,8	5,035
B.4.1	51854,3	5,296
C.1.1	44211,4	4,516
C.2.1	47679,1	4,870
C.3.1	49389,6	5,045
C.4.1	50950	5,204

Tabulka 10 - Získané tlaky z programu ANSYS CFX převedené na hloubky pro všechny varianty

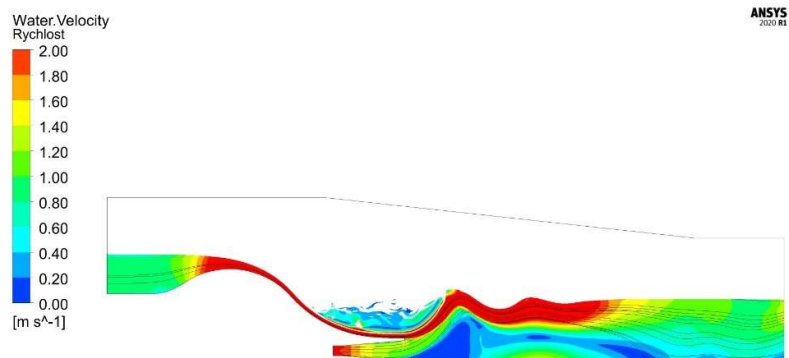
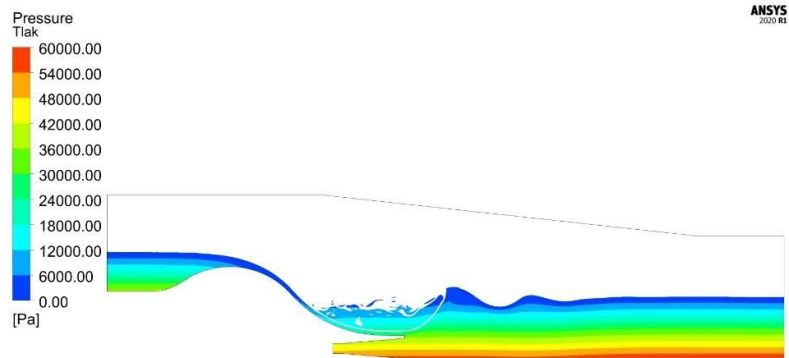
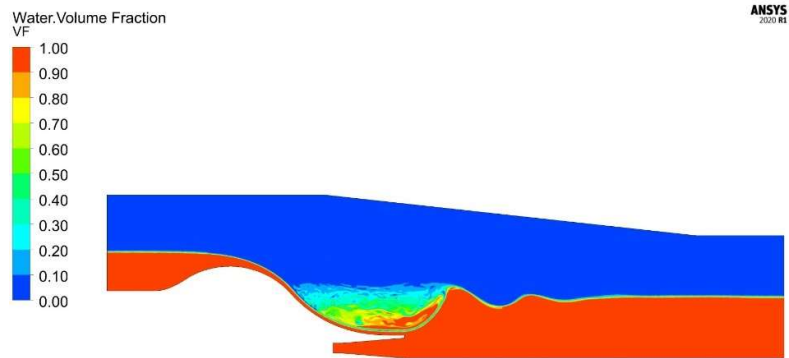
Příloha C - A.1.1



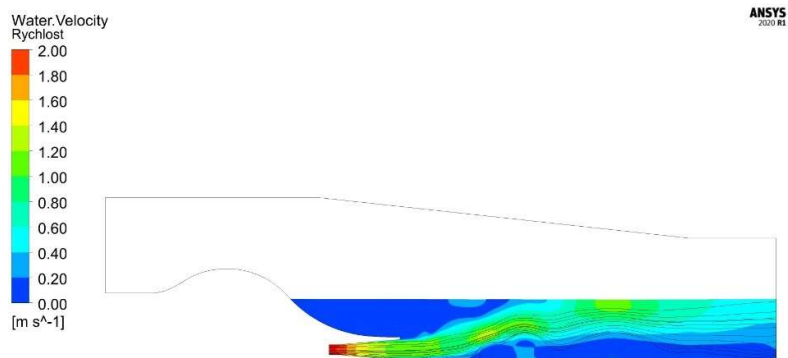
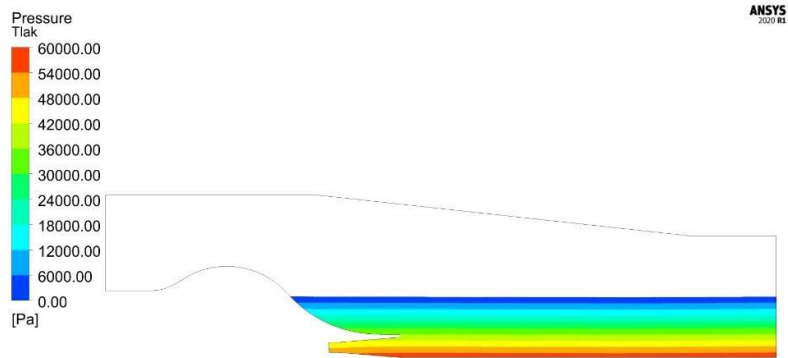
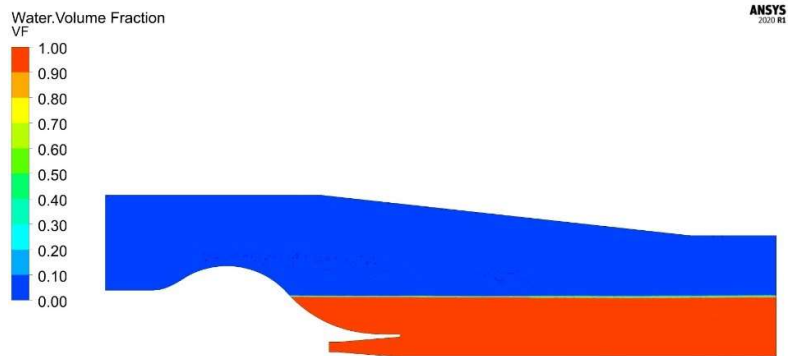
Příloha D - A.1.2



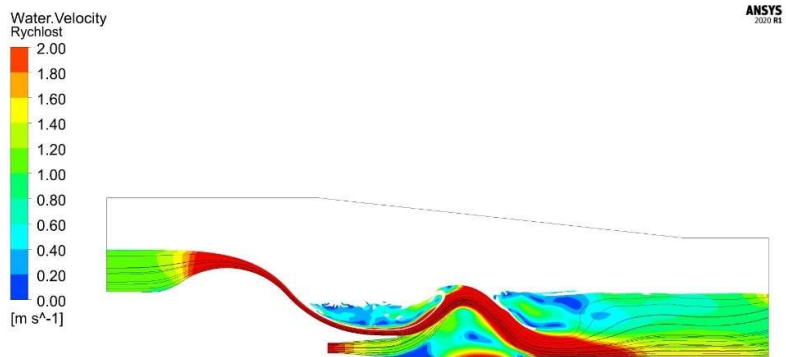
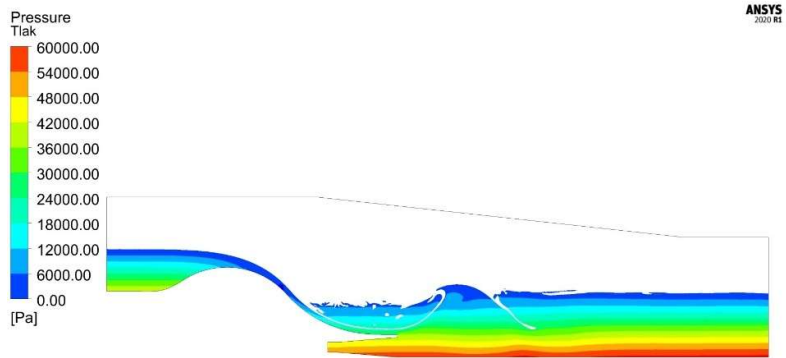
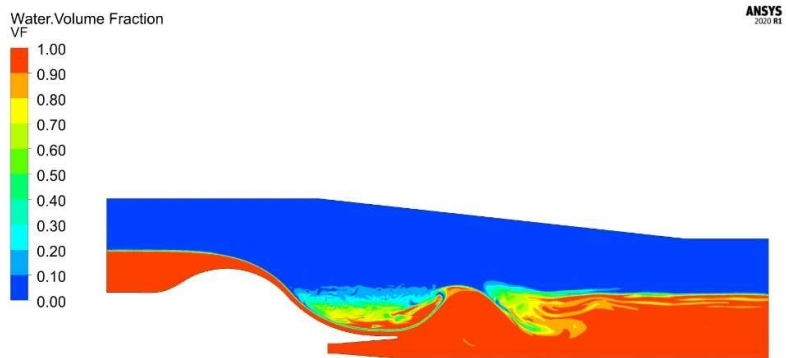
Příloha E - A.2.1



Příloha F - A.2.2



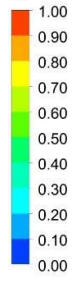
Příloha G - A.3.1



Příloha H - A.3.2

Water:Volume Fraction

VF

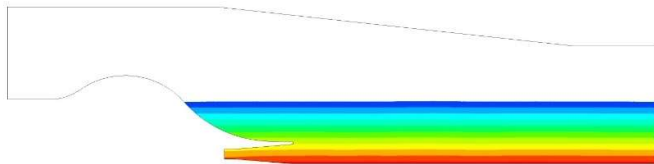
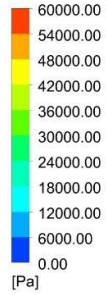


ANSYS
2020 R1



Pressure

Tlak

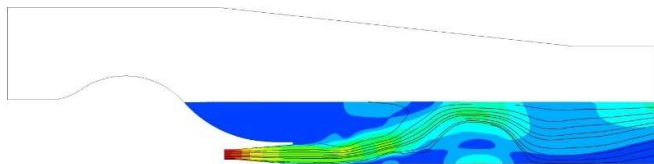


ANSYS
2020 R1



Water:Velocity

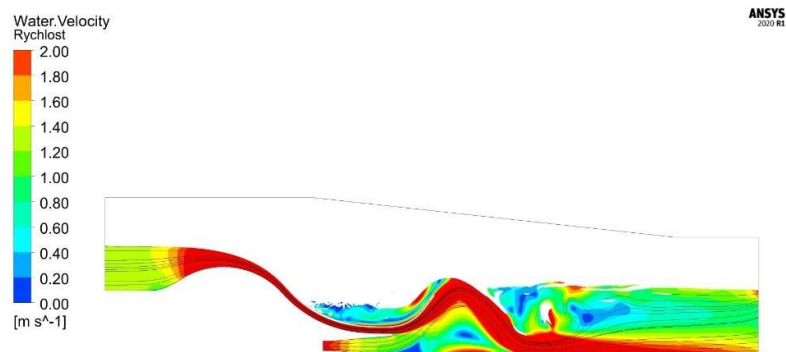
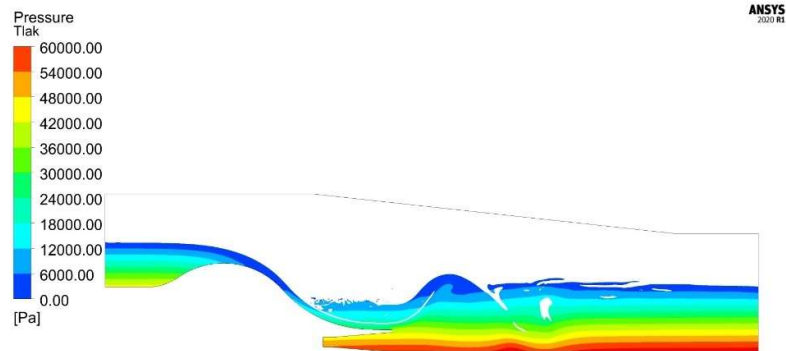
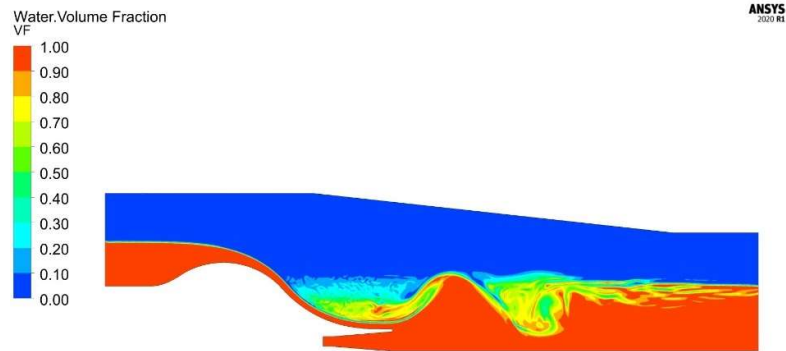
Rychlost



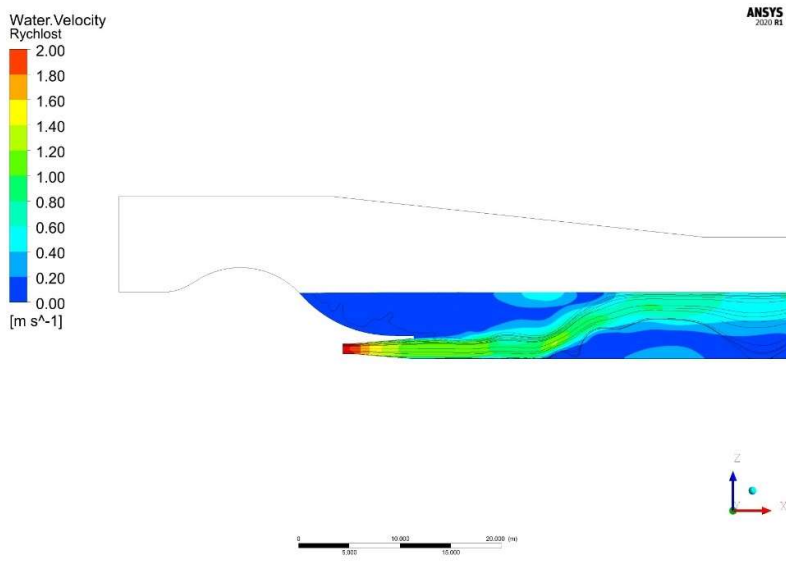
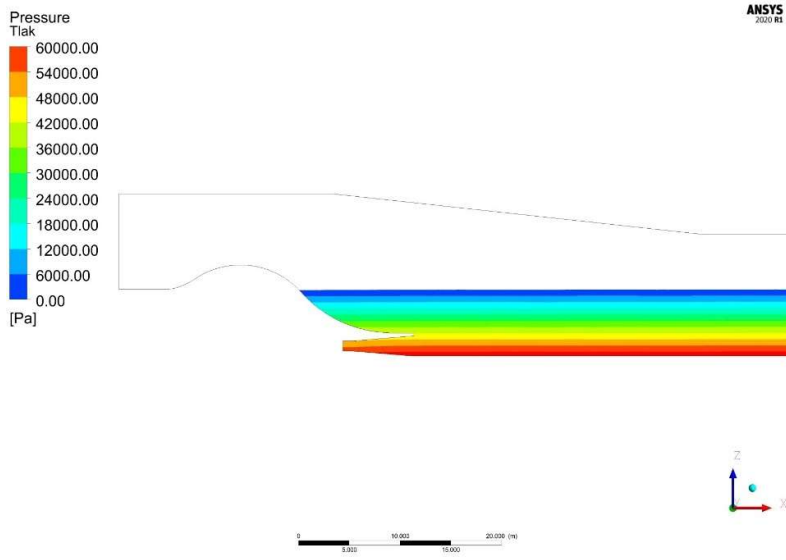
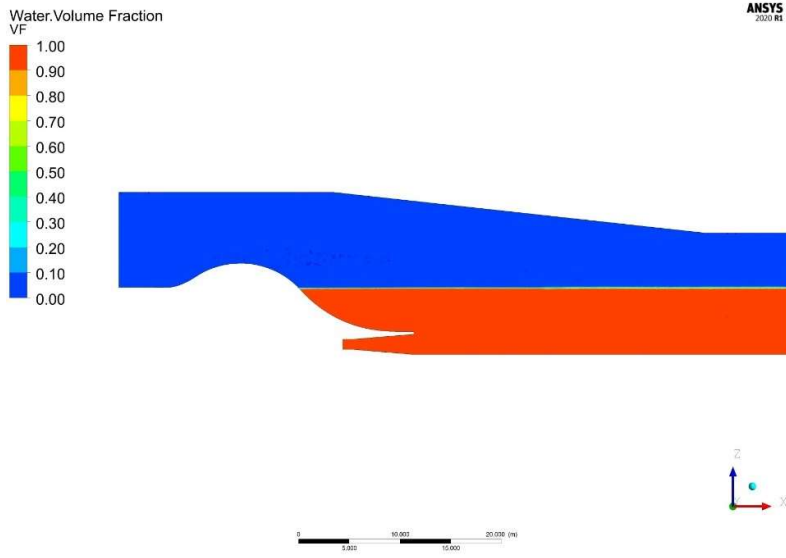
ANSYS
2020 R1



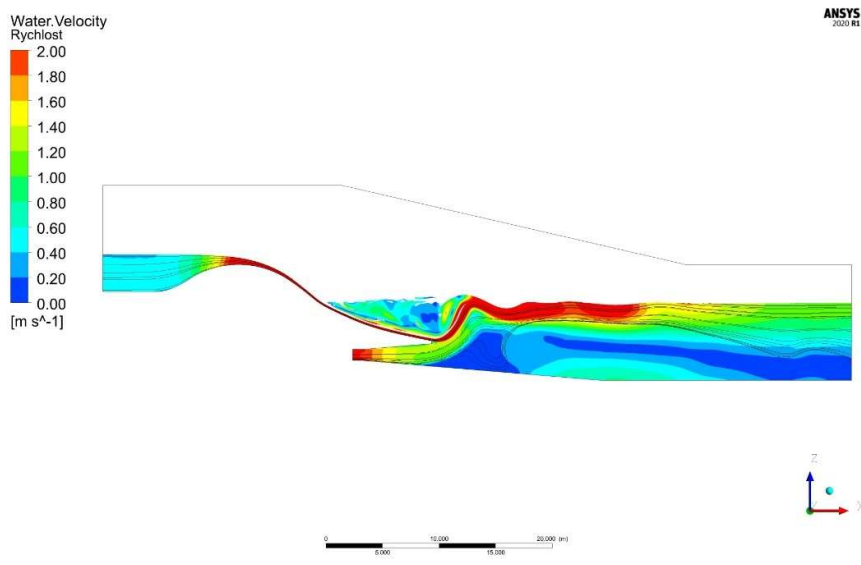
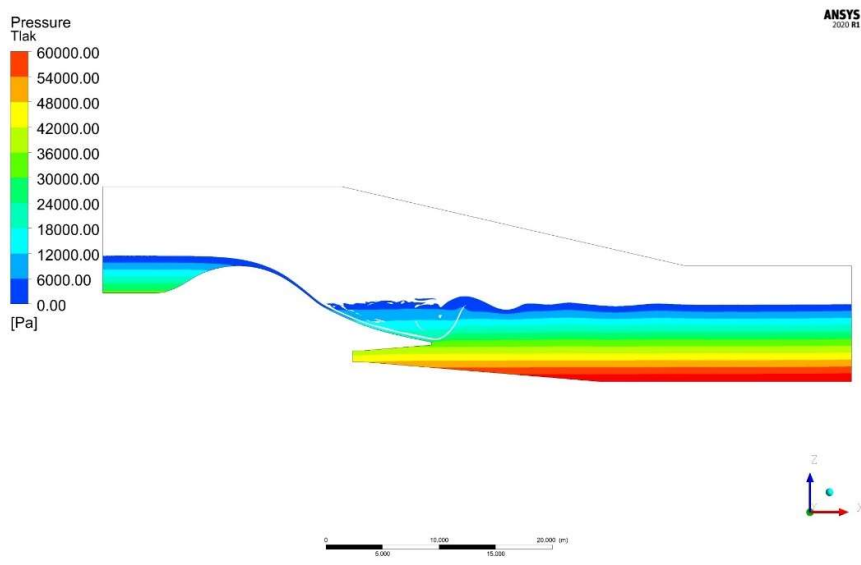
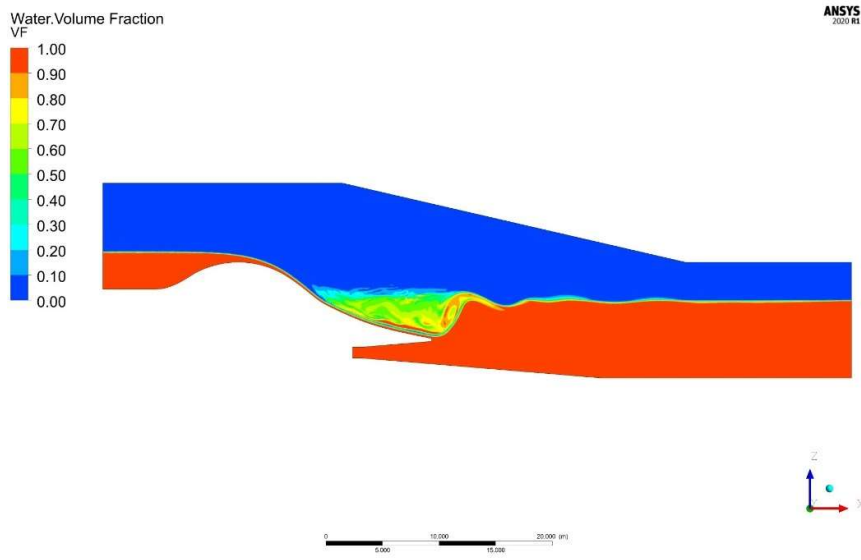
Příloha I - A.4.1



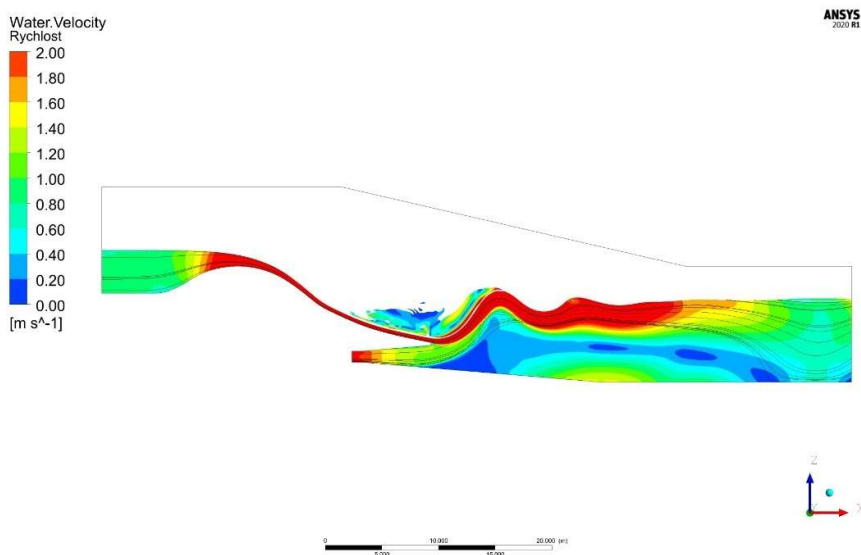
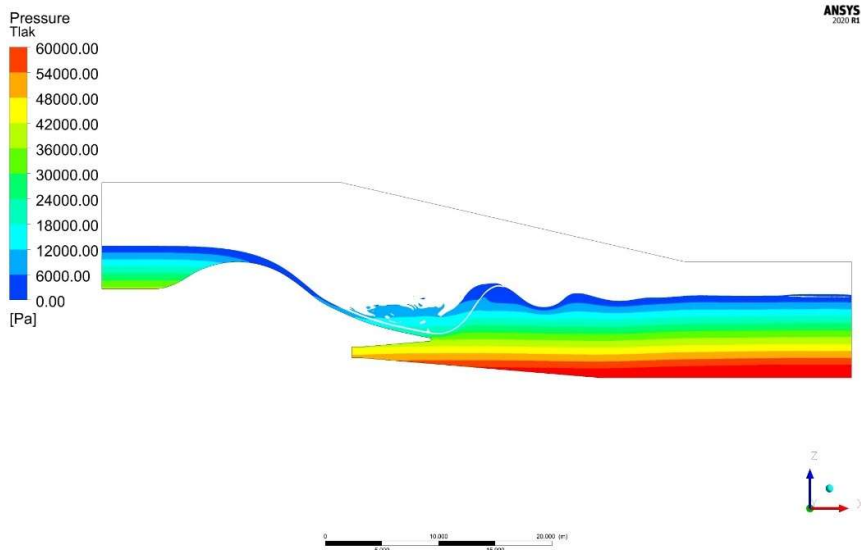
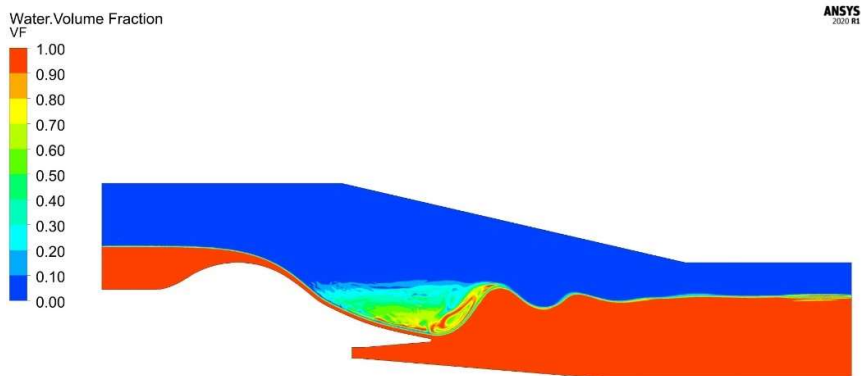
Příloha J - A.4.2



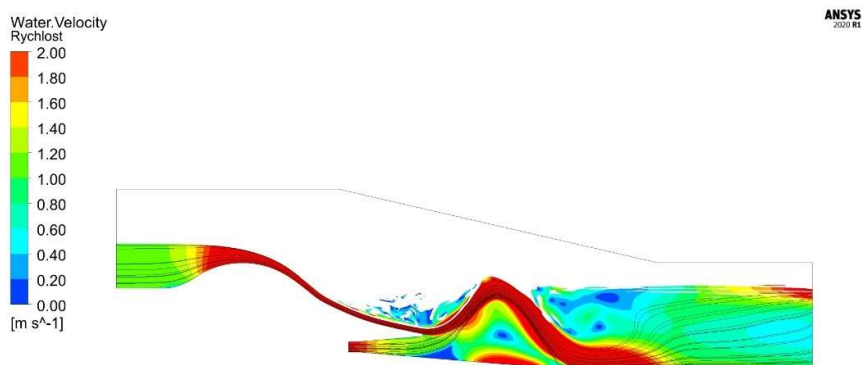
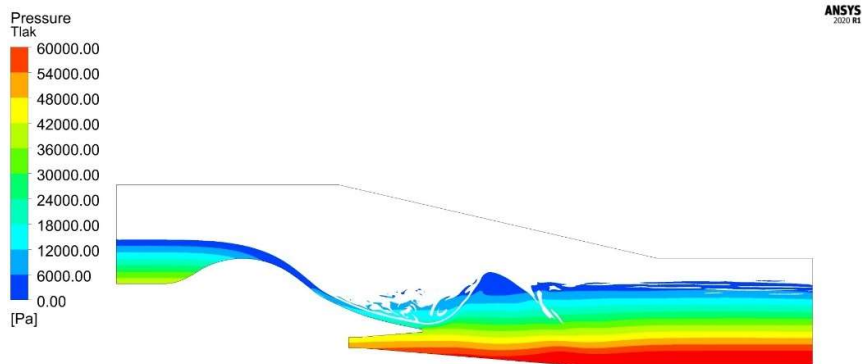
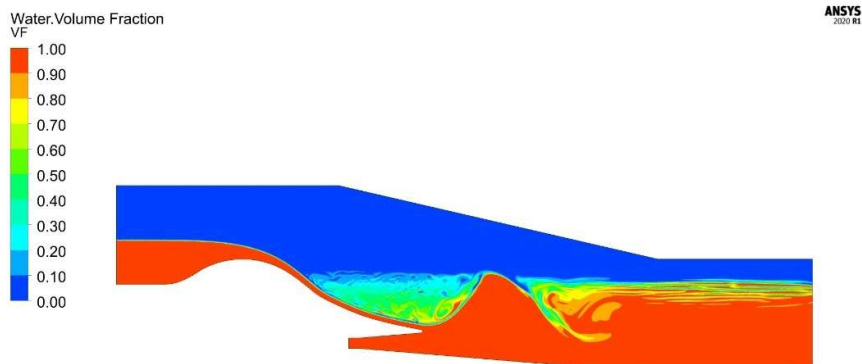
Příloha K - B.1.1



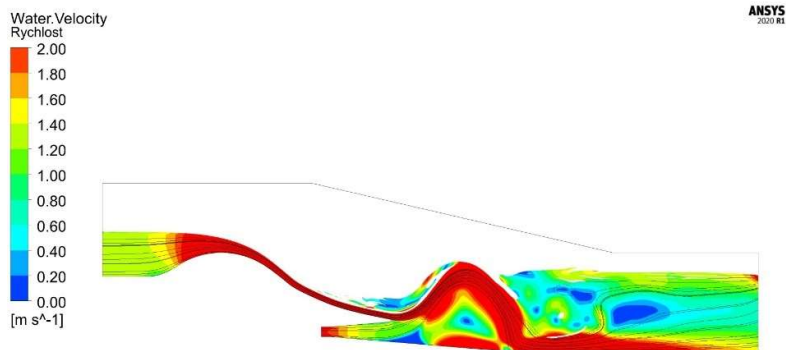
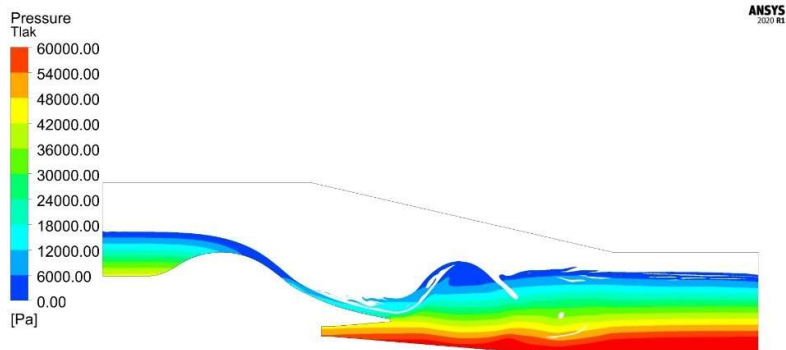
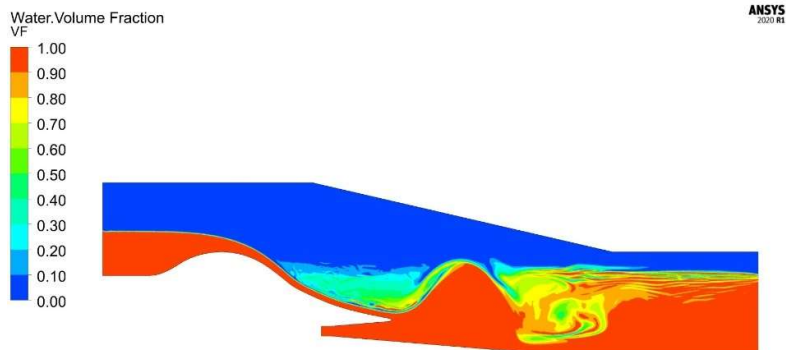
Příloha L - B.2.1



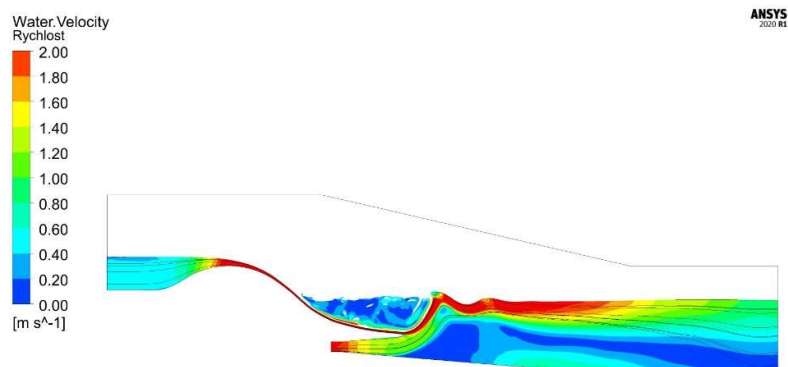
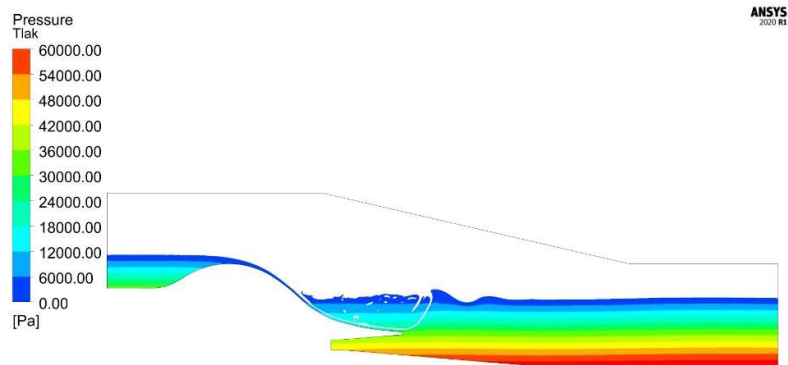
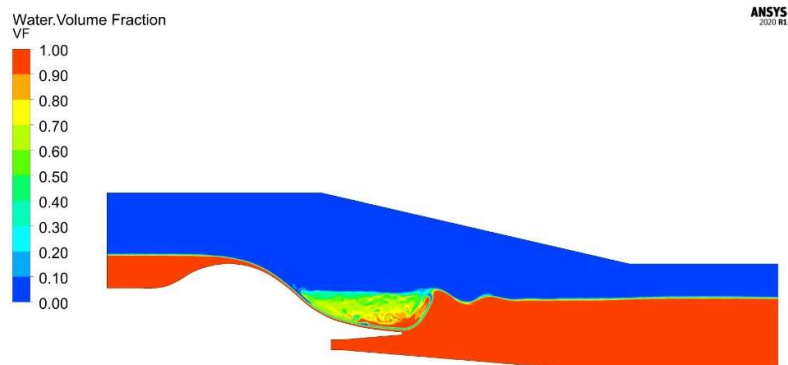
Příloha M - B.3.1



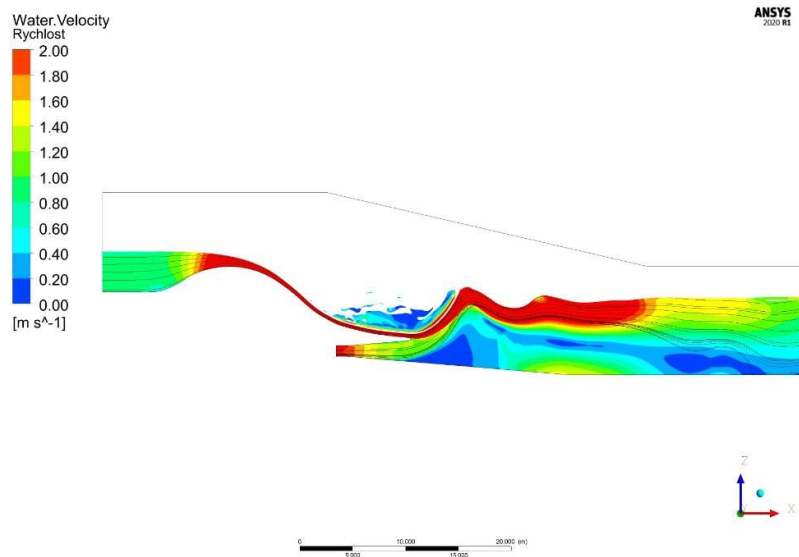
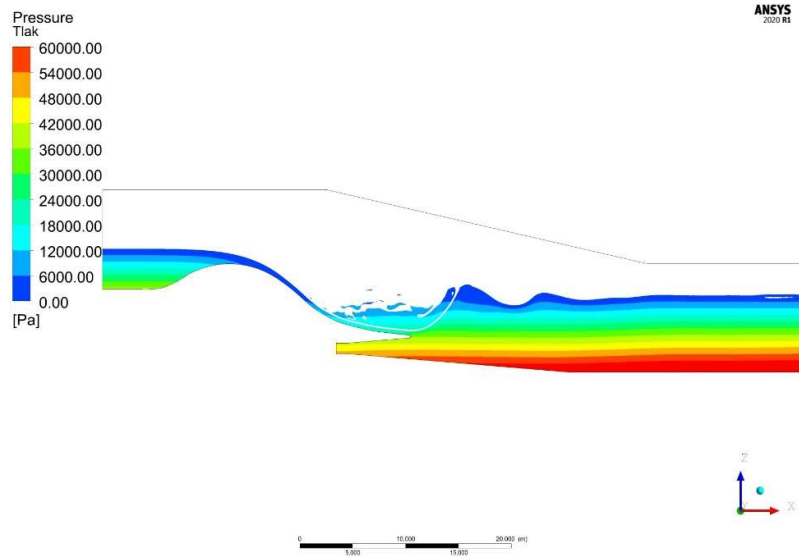
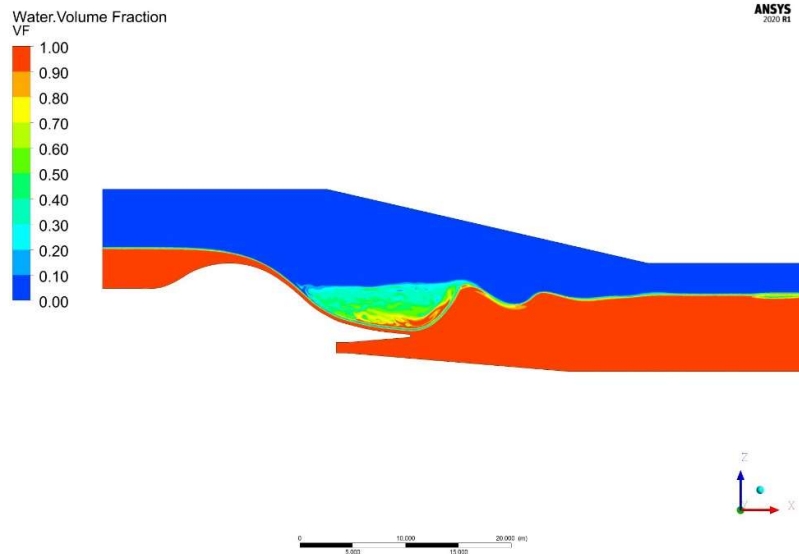
Příloha N - B.4.1



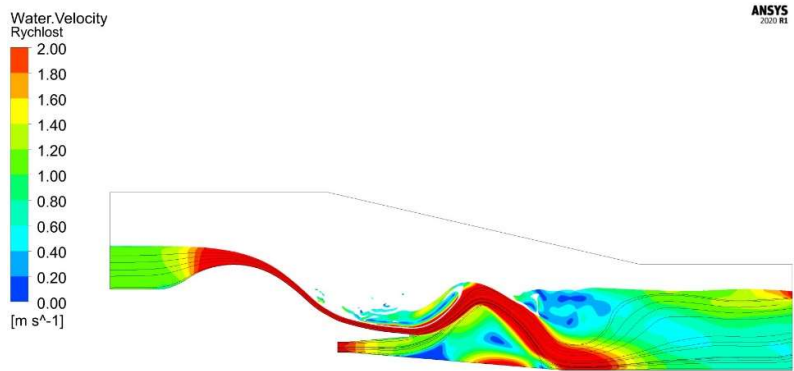
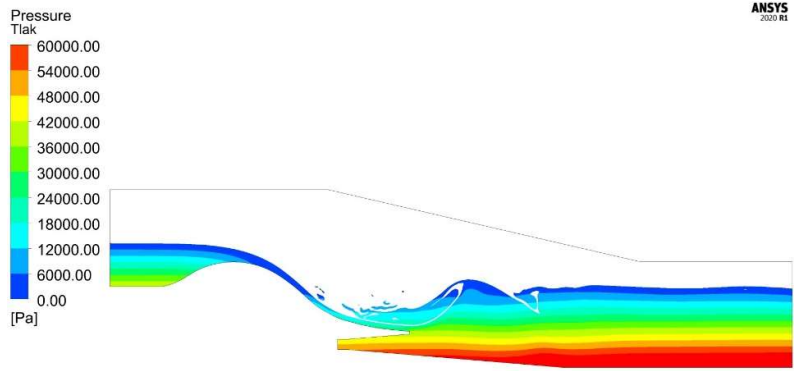
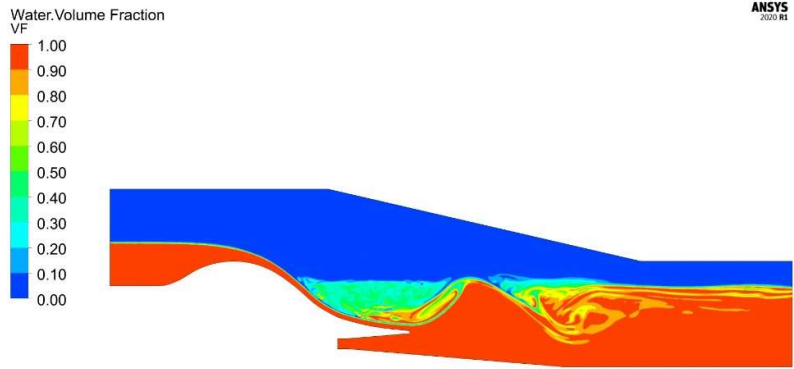
Příloha O - C.1.1



Příloha P - C.2.1



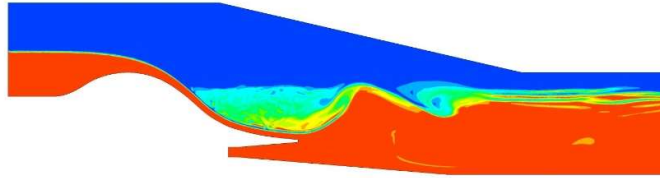
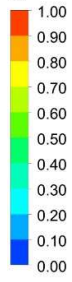
Příloha Q - C.3.1



Příloha R - C.4.1

Water.Volume Fraction

VF

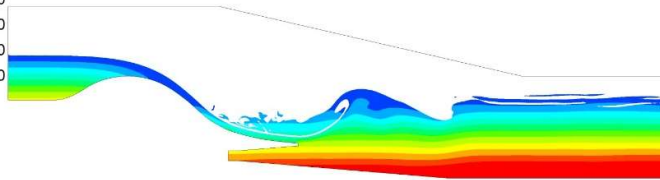
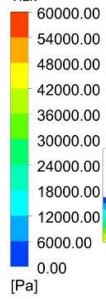


ANSYS
2020 R2



Pressure

Tlak

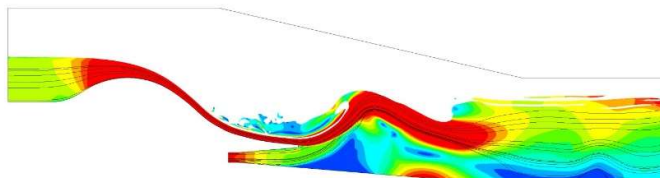
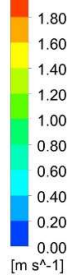


ANSYS
2020 R2



Water.Velocity

Rychlost



ANSYS
2020 R2

