

Chrám

malá chrámová stavba z hinduistické svatyně Pashupatinath v Kathmandu (Nepál)
21 May 2020



Survey Data

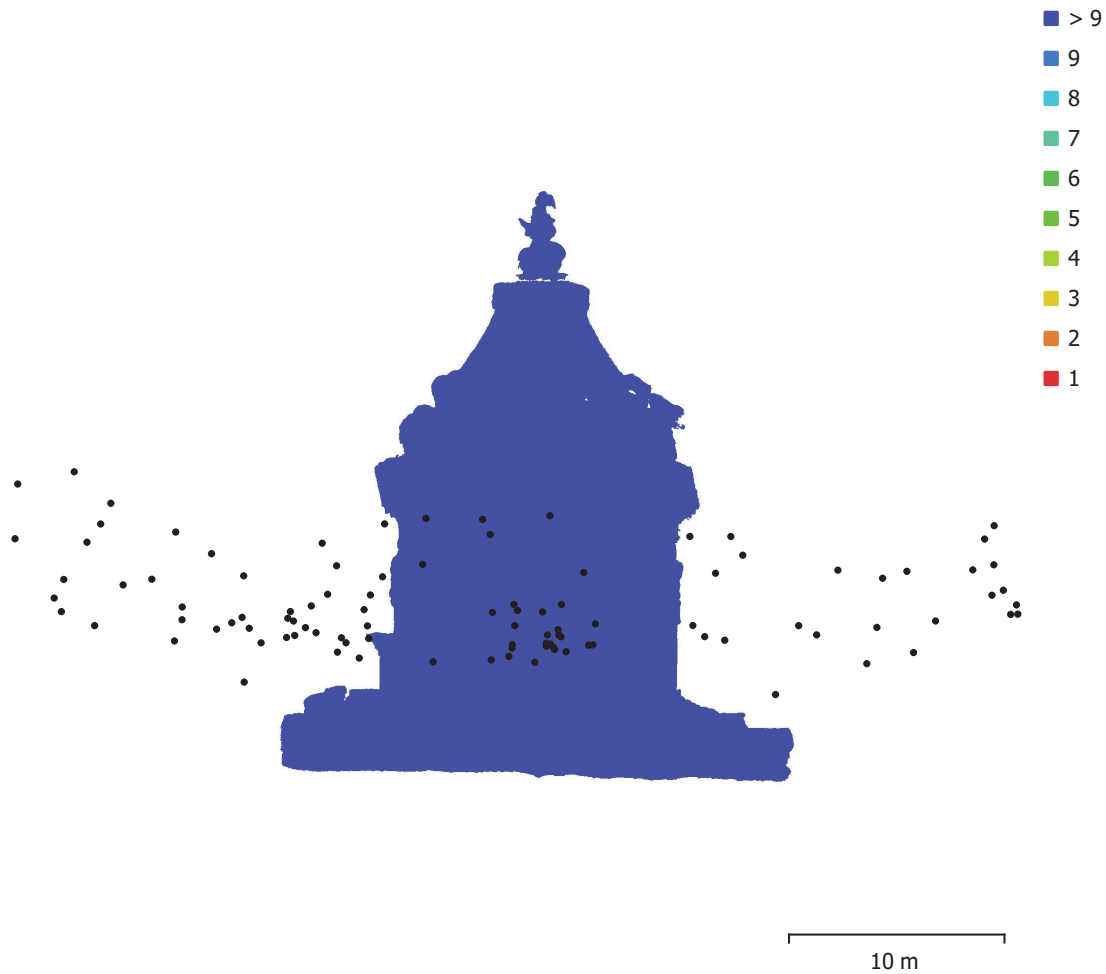


Fig. 1. Camera locations and image overlap.

Number of images:	102	Camera stations:	102
Flying altitude:	12.2 m	Tie points:	209,915
Ground resolution:	4.1 mm/pix	Projections:	565,197
Coverage area:	307 m ²	Reprojection error:	0.766 pix

Camera Model	Resolution	Focal Length	Pixel Size	Precalibrated
DSC-HX5V (4.25mm)	3648 x 2736	4.25 mm	unknown	No
DSC-HX5V (4.25mm)	3648 x 2736	4.25 mm	unknown	No

Table 1. Cameras.

Camera Calibration

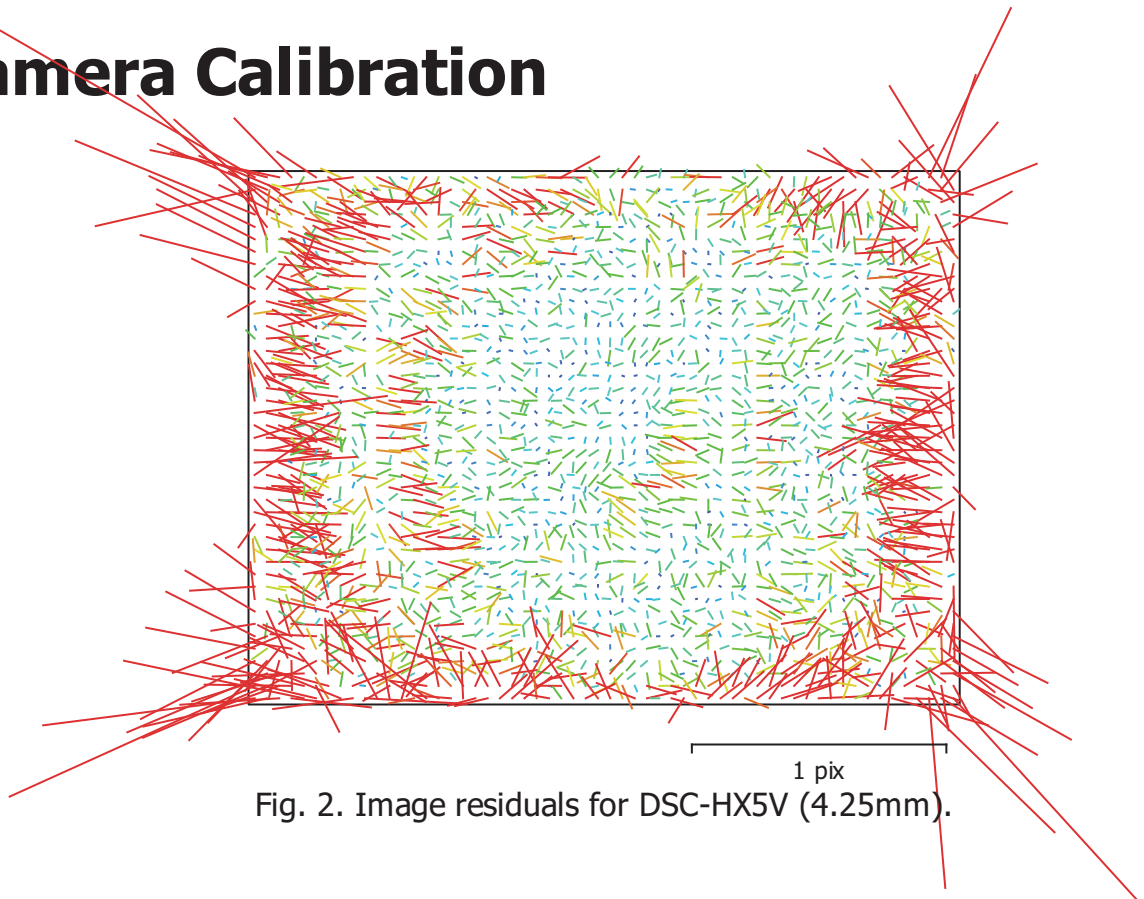


Fig. 2. Image residuals for DSC-HX5V (4.25mm).

DSC-HX5V (4.25mm)

96 images

Type	Resolution	Focal Length	Pixel Size
Frame	3648 x 2736	4.25 mm	unknown

	Value	Error	F	B1	K1	K2	P1	P2
F	2574.22	0.074	1.00	-0.31	0.10	0.14	0.10	-0.03
B1	1.68443	0.056		1.00	0.12	-0.03	-0.28	-0.07
K1	-0.00453464	4e-005			1.00	-0.88	-0.07	0.06
K2	0.00361237	5.9e-005				1.00	0.04	-0.04
P1	0.000157183	4.3e-006					1.00	-0.04
P2	-1.83052e-005	4.4e-006						1.00

Table 2. Calibration coefficients and correlation matrix.

Camera Calibration

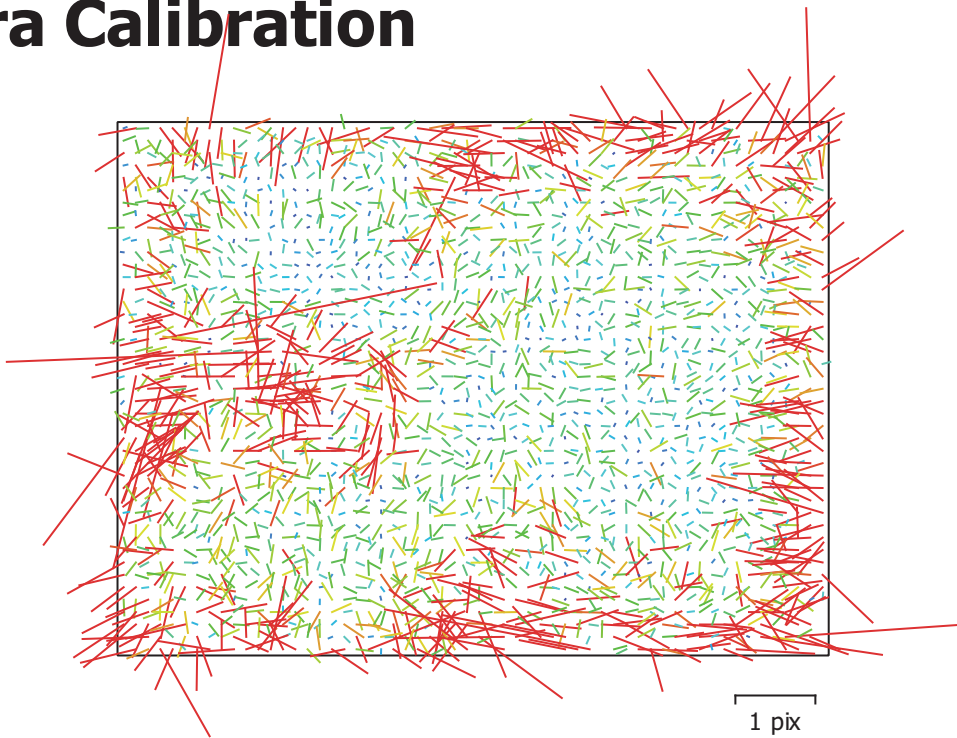


Fig. 3. Image residuals for DSC-HX5V (4.25mm).

DSC-HX5V (4.25mm)

6 images

Type
Frame

Resolution
3648 x 2736

Focal Length
4.25 mm

Pixel Size
unknown

	Value	Error	F	K1
F	2570.51	0.49	1.00	0.59
K1	0.0016767	0.00012		1.00

Table 3. Calibration coefficients and correlation matrix.

Processing Parameters

General

Cameras	102
Aligned cameras	102
Markers	12
Coordinate system	Local Coordinates (m)
Rotation angles	Yaw, Pitch, Roll

Point Cloud

Points	209,915 of 240,421
RMS reprojection error	0.143576 (0.766114 pix)
Max reprojection error	0.543523 (24.6611 pix)
Mean key point size	5.32179 pix
Point colors	3 bands, uint8
Key points	No
Average tie point multiplicity	2.72736

Dense Point Cloud

Points	26,625,693
Point colors	3 bands, uint8

Depth maps generation parameters

Quality	High
---------	------

Model

Faces	5,183,028
Vertices	2,597,417
Vertex colors	3 bands, uint8
Texture	4,096 x 4,096, 4 bands, uint8

Depth maps generation parameters

Quality	High
---------	------

Reconstruction parameters

Surface type	Arbitrary
Source data	Dense cloud
Interpolation	Enabled

Texturing parameters

Blending mode	Mosaic
Texture size	4,096
Enable hole filling	Yes
Enable ghosting filter	Yes
UV mapping time	1 minutes 18 seconds
Blending time	9 minutes 3 seconds

Software

Version	1.5.2 build 7838
Platform	Windows 64