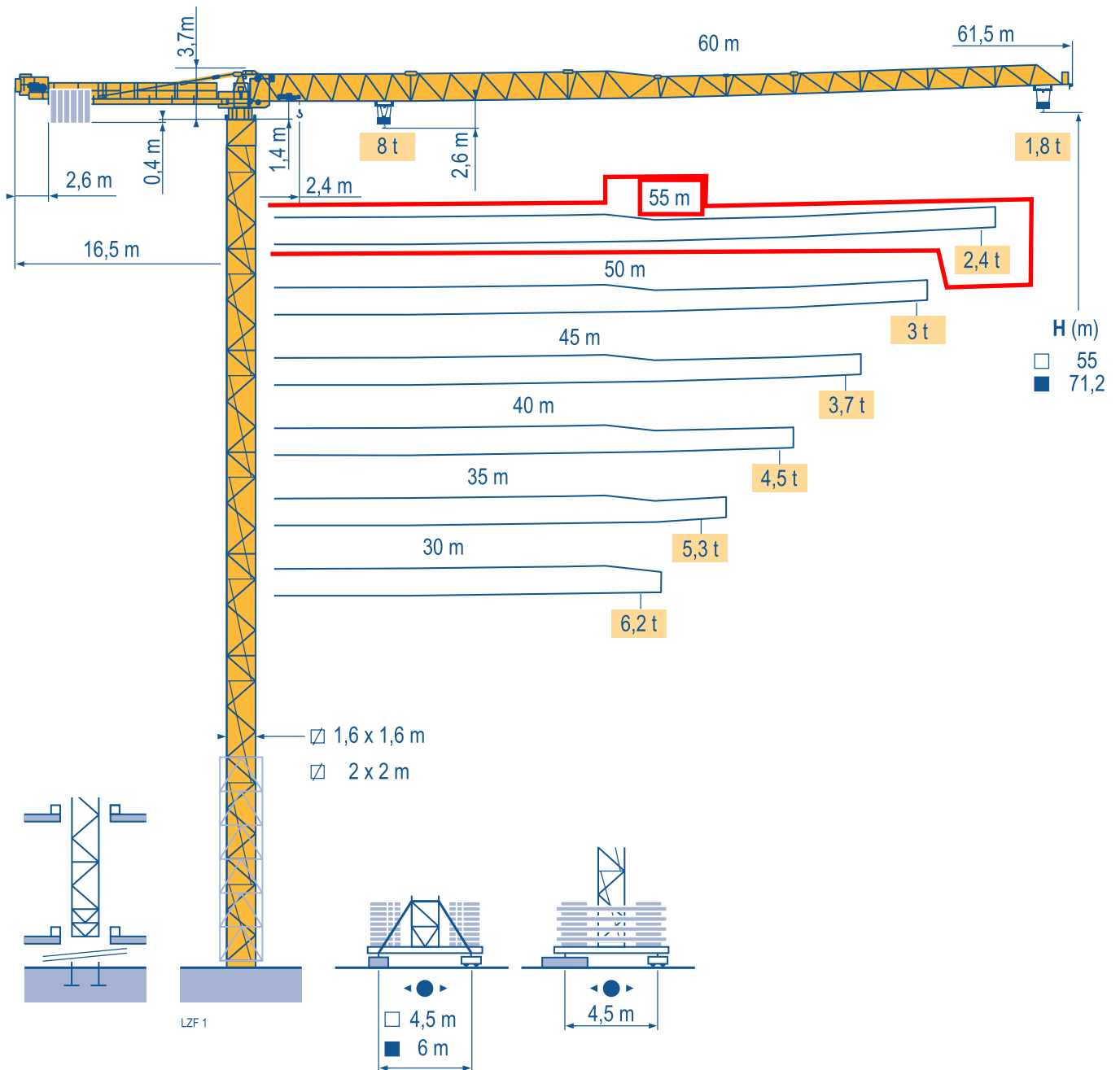
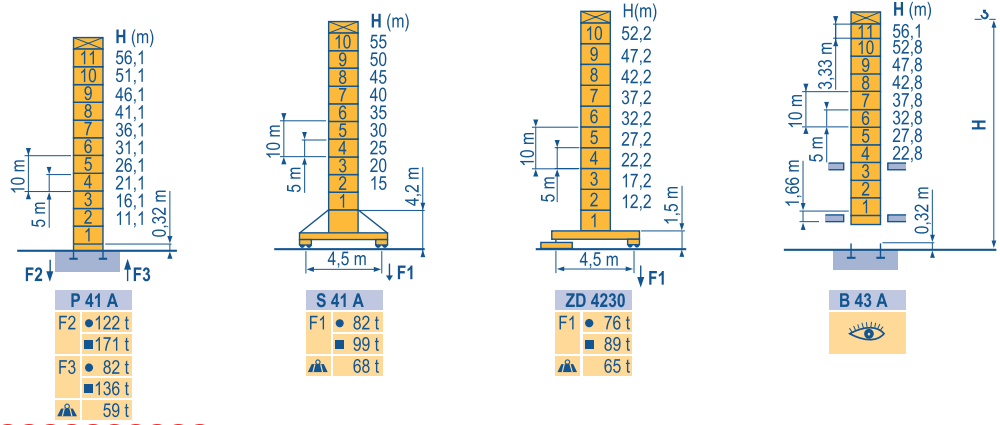


## MDT 162 H8

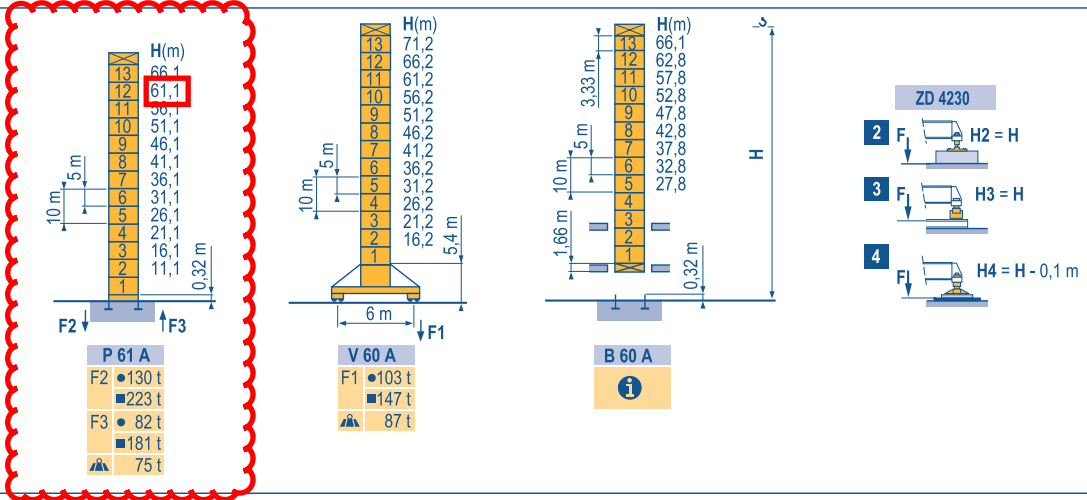


Mat / Réactions  $\square$  1,6 m  
 Maste /  
 Eckdrücke 30 m  $\Rightarrow$  60 m  
 Masts /  
 Reactions  
 Mástil /  
 Reacciones  
 Torre / Reazioni  
 Tramo /  
 Reações

LZF 1

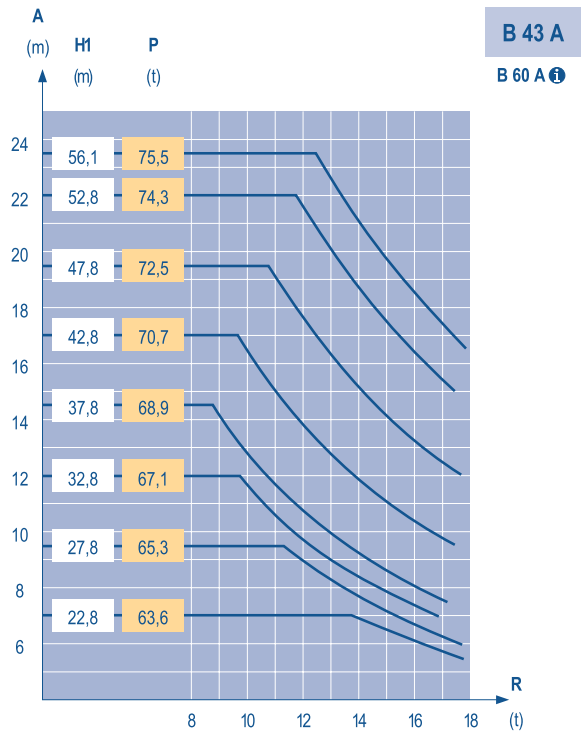
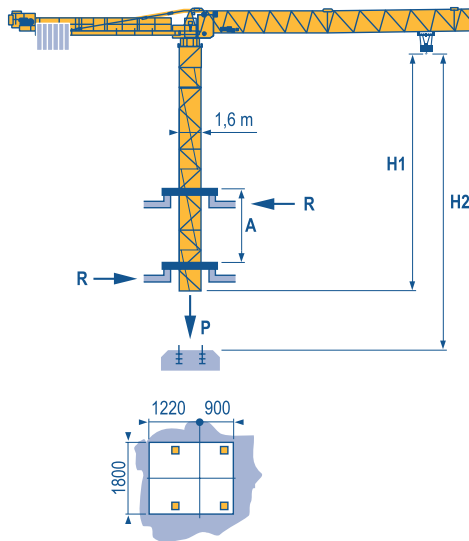


$\square$  2 m  
 30 m  $\Rightarrow$  60 m



Télescopage sur dalles  
 Kletterkrane im Gebäude  
 Climbing crane  
 Telescopage gruas trepadoras  
 Gru in cavedio  
 Telescopagem sobre lages

LZF 1



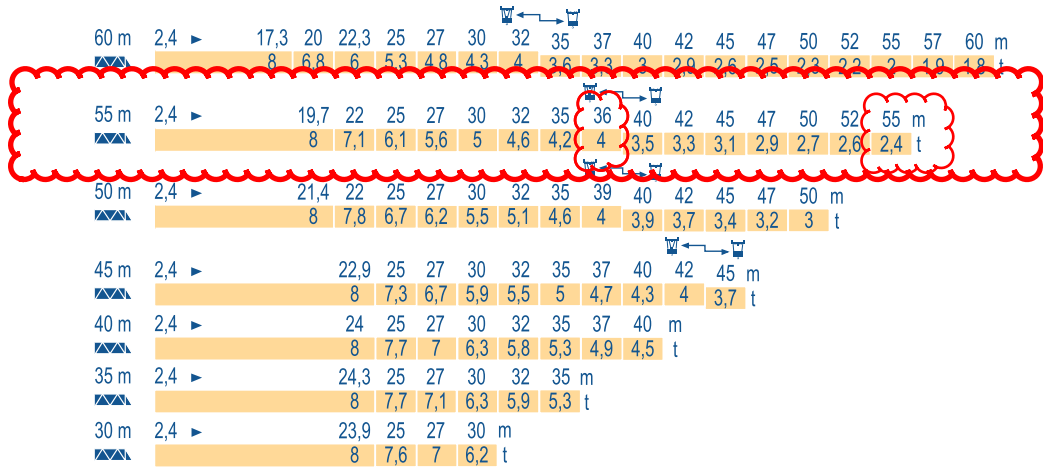
Topless  
 MDT 162 H8

POTAIN

F	D	GB	E	I	P
● Réactions en service ■ Réactions hors service	● Reaktionskräfte in Betrieb ■ Reaktionskräfte außer Betrieb	● Reactions in service ■ Reactions out of service	● Reacciones en servicio ■ Reacciones fuera de servicio	● Reazioni in servizio ■ Reazioni fuori servizio	● Reações em serviço ■ Reações fora de serviço
A vide sans lest (ni train de transport) avec flèche et hauteur maximum.	Ohne Last, Ballast (und Transportachse), mit Maximalausleger und Maximalhöhe.	Without load, ballast (or transport axles), with maximum jib and maximum height.	Sin carga, sin lastre, (ni tren de transporte), flecha y altura máxima.	A vuoto, senza zavorra (ne assali di trasporto) con braccio massimo e altezza massima.	Sem carga (nem trem de transporte)- sem lastro com lança e altura máximas.
Nous consulter	Auf Anfrage	Consult us	Consultarnos	Consultateci	Consultar-nos

Courbes de charges  
Lastkurven  
Load diagrams  
Curvas de cargas  
Curve di carico  
Curva de cargas

LZF 1



Lest de contre-flèche  
Gegenauslegerballast  
Counter-jib ballast  
Lastre de contra flecha  
Contrappeso  
Lastros da contra lança

LZF 1

Span (m)	3 150 kg - 2 100 kg	
	50 LVF 20	
	⚙️	⚖️ (kg)
60 m	16,5 m	15 750
55 m	16,5 m	15 750
50 m	16,5 m	15 750
45 m	16,5 m	14 700
40 m	16,5 m	13 650
35 m	16,5 m	12 600
30 m	16,5 m	11 550

Lest de base  
Grundballast  
Base ballast  
Lastre de base  
Zavorra di base  
Lastros da base

LZF 1

Span (m)	Model	H (m)	Weights (t)																		
			55	50	45	40	35	30	25	20	15										
1,6 m	S 41 A -●-	H (m)	55	50	45	40	35	30	25	20	15										
		⚖️ (t)	84	60	48	48	48	48	48	48	48	48									
1,6 m	ZD 4230 -●-	H (m)	52,2	47,2	42,2	37,2	32,2	27,2	22,2	17,2	12,2										
		⚖️ (t)	70	55	50	50	50	50	50	50	50										
2 m	V 60 A -●-	H (m)	71,2	66,2	61,2	56,2	51,2	46,2	41,2	36,2	31,2	26,2	21,2	16,2							
		⚖️ (t)	132	108	84	60	36	36	36	36	36	36	36	36							

Topless  
MDT 162 H8

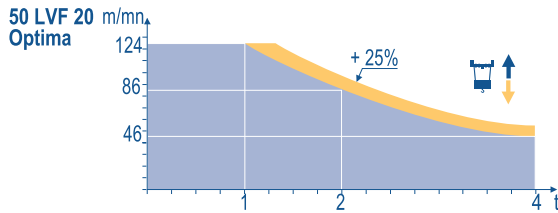


	F	D	GB	E	I	P
<b>A</b>	Distance entre cadres	Abstand zwischen den Rahmen	Distance between collars	Distancia entra marcos	Distanza fra i telai	Distância entre quadros
<b>H1</b>	Hauteur grue	Kranhöhe	Crane height	Altura grúa	Altezza gru	Altura da grua
<b>P</b>	Poids de la grue(en service)	Krangewicht (in Betrieb)	Crane weight (in service)	Peso de la grúa (en servicio)	Peso della gru (in servizio)	Peso da grua (em serviço)
<b>R</b>	Réaction horizontale	Horizontalkräfte	Horizontal reaction	Reaccion horizontal	Reazione orizzontale	Reacção horizontal
	Voir télescopage sur dalles	Siehe Kletterkrane im Gebäude	See climbing crane	Veja grua trepadora	Consultare gru in cavedio	Ver telescopagem sobre lages

Mécanismes  
Antriebe  
Mechanisms  
Mecanismos  
Meccanismi  
Mecanismos

LZF 3

														ch - PS hp	kW					
	50 LVF 20 Optima	m/min	4 → 16 → 46 → 60 → 86 → 124							2 → 8 → 23 → 30 → 43 → 62					50	37	602 m			
		t	4	4	4	3	2	1	8	8	8	6	4	2						
	7 DVF 4	m/min	0 → 79														6,5	4,8		
	RVF 162 Optima +	tr/min U/min rpm	0 → 0,7														2 x 7,5	2 x 5,5		
	S 41 A  R ≥ 10 m	RT 443 A1 2V	m/min	15 - 30														4 x 5	4 x 3,7	
			ZD 4230 A 	RT 324 A1 2V	m/min	12,5 - 25														2 x 7
	V 60 A  R ≥ 13 m	RT 544 A1 2V	m/min	13,5 - 27														4 x 7	4 x 5,2	
CEI 38			IEC 38			kVA														
400V (+6%-10%) 50 Hz			50 LVF 20 : 75 kVA																	



F	D	GB	E	I	P
Levage	Heben	Hoisting	Elevación	Sollevamento	Elevação
Distribution	Katzfahren	Trolleying	Distribución	Distribuzione	Distribuição
Orientation	Schwenken	Slewing	Orientación	Rotazione	Rotação
Translation	Kranfahren	Travelling	Traslación	Traslazione	Translação

Document commercial non contractuel. Pour toute information technique se référer à la notice correspondante. Unverbindliches Vertriebsdokument. Für technische Informationen, siehe die entsprechenden Anweisungen. This commercial document is not legally binding. For any technical information, please refer to the corresponding instructions. Documento comercial non contractuel. Para cualquier información técnica, ver la noticia correspondiente. Documento commerciale non vincolante, per tutte le informazioni tecniche fare riferimento al catalogo istruzioni. Documento comercial não contractual. Para qualquer informação técnica complementar consultar as respectivas instruções.



**Manitowoc**  
Crane CARE

**POTAIN**   
Manitowoc Crane Group



**Americas**  
Tel : +1 888 479 7278  
Tel : +1 717 593 2000

**Europe - Middle East - Africa**  
Tel : +33 (0) 4 72 81 50 00  
Tel : +44 (0) 191 522 2000

**Asia - Pacific**  
Tel : +65 6264 1188  
Fax : +65 6862 4142

www.manitowoccrane.com

18, rue de Charbonnières - B.P.173  
69132 ECULLY Cedex - France  
Tel. : +33 (0) 4 72 18 20 20  
Fax. : +33 (0) 4 72 18 20 00  
www.manitowoccrane.com

**Topless MDT 162 H8**  
Réf. 2003 48 LZF 3

Copyright.Reproduction interdite © POTAIN 2003

Réalisation Sedoc