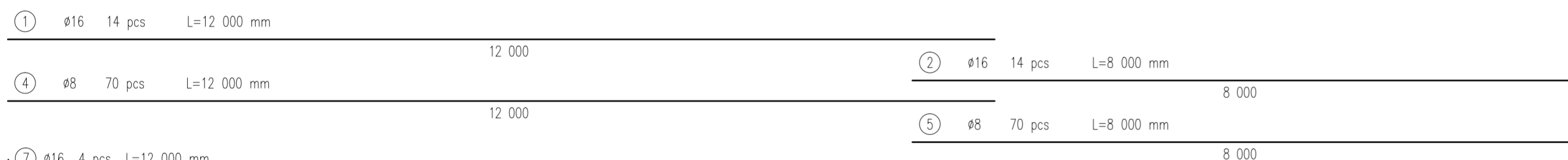
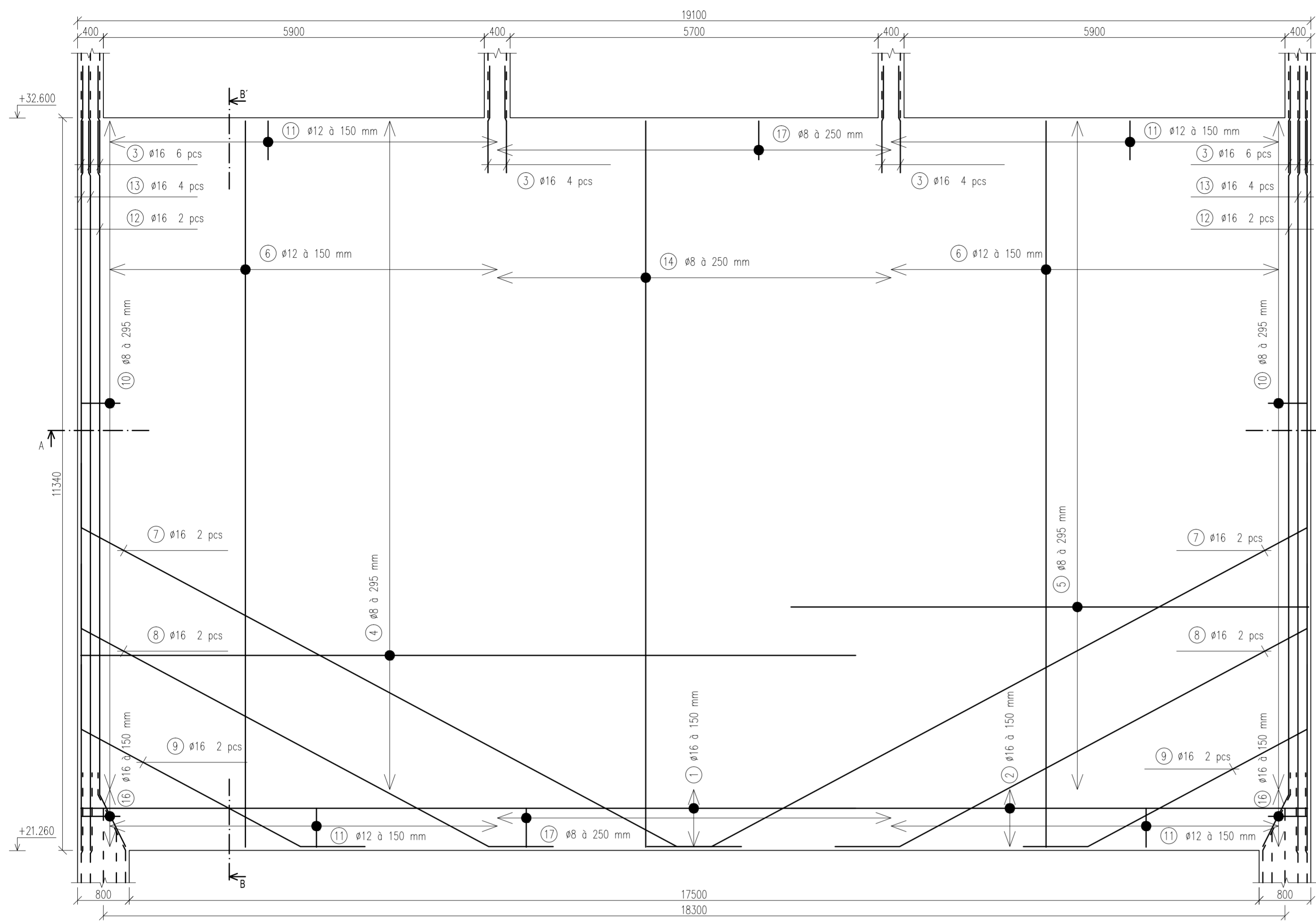
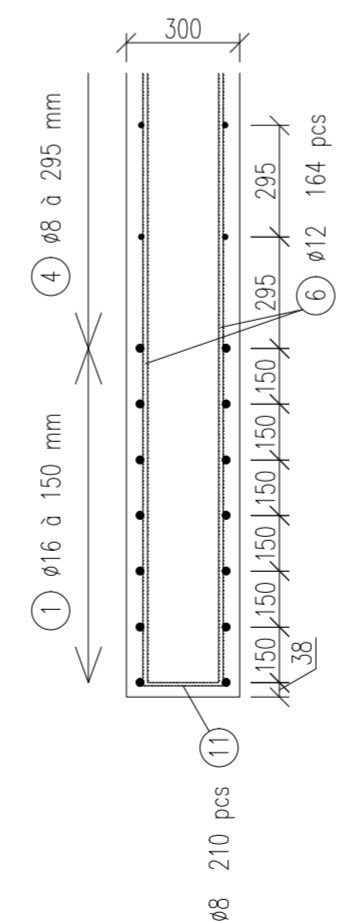


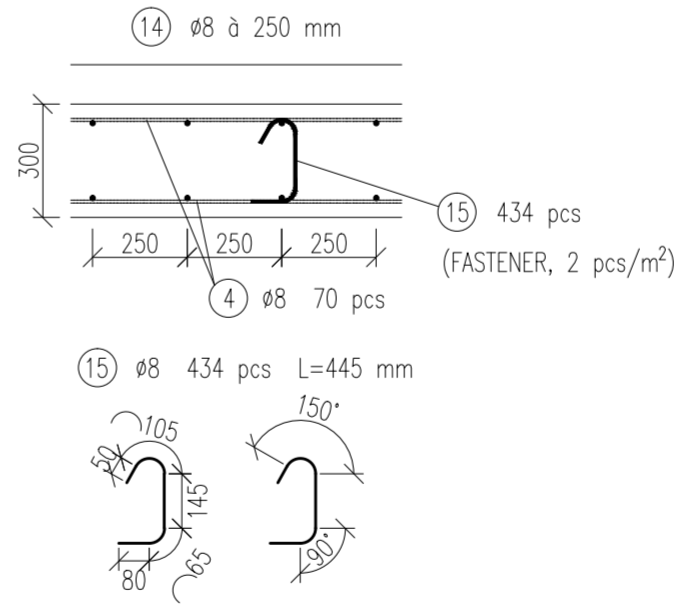
ELEVATION
SCALE 1:50



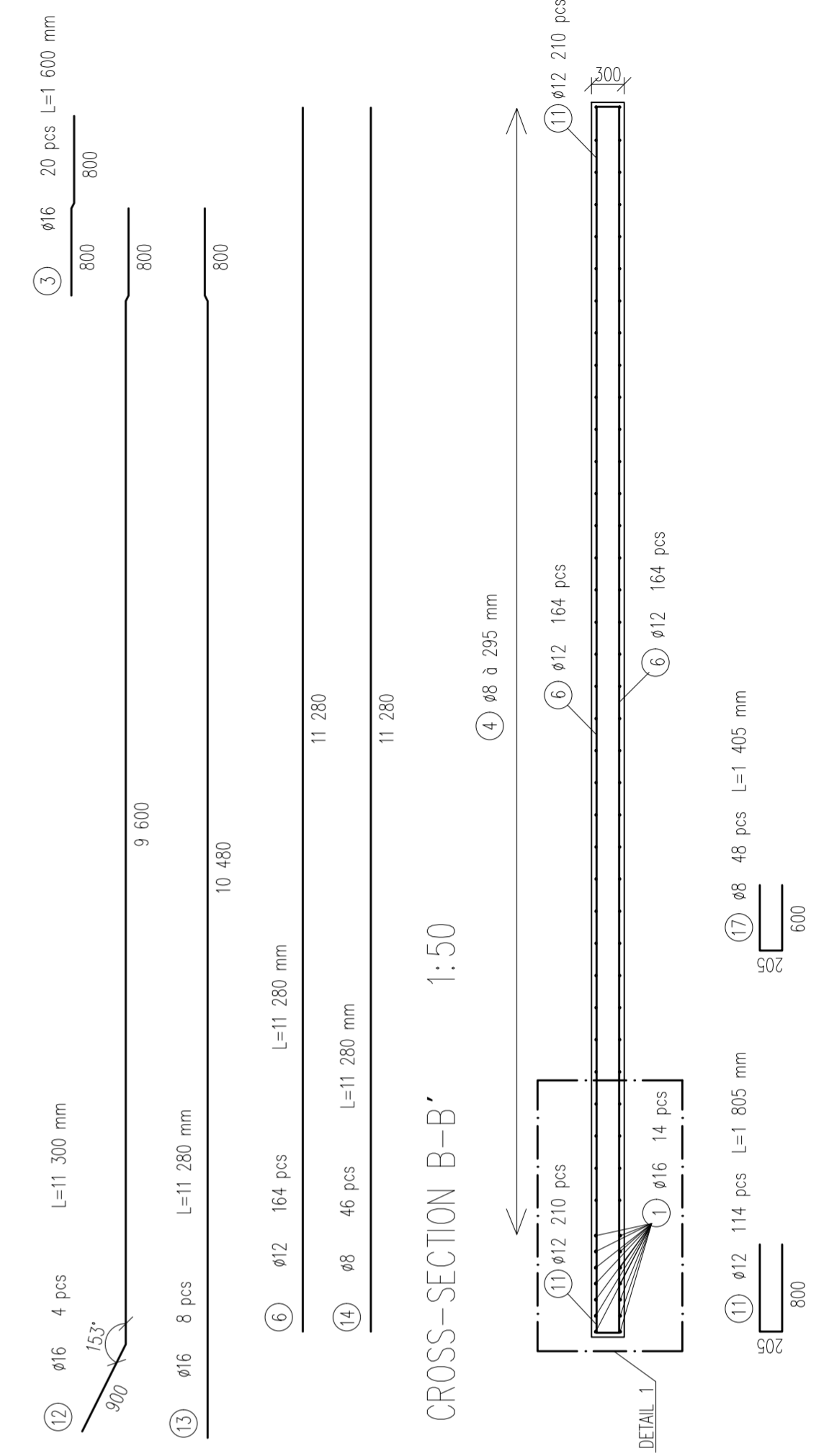
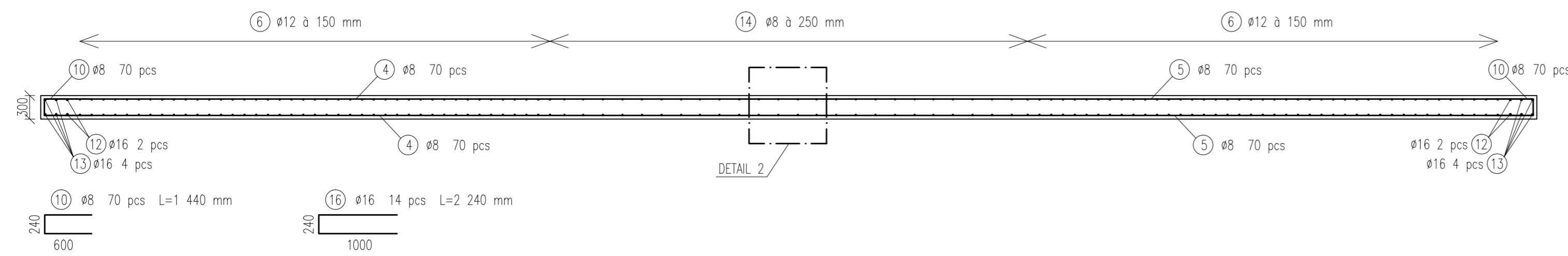
DETAIL 1 1:20



DETAIL 2 1:20



CROSS-SECTION A-A' 1:50



REINFORCEMENT TABLE

No.	DIAMETER [mm]	LENGTH [mm]	AMOUNT	WEIGHT/PIECE [kg]	TOTAL WEIGHT [kg]
1	16	12 000	14	18.96	265.44
2	16	8 000	14	12.64	176.96
3	16	1 600	20	2.53	50.60
4	8	12 000	70	4.80	336.00
5	8	8 000	70	3.20	224.00
6	12	11 280	164	10.04	1 646.56
7	16	12 000	4	18.96	75.84
8	16	8 760	4	13.84	55.36
9	16	5 450	4	8.61	34.44
10	8	1 440	70	0.58	40.60
11	12	1 805	114	1.61	183.54
12	16	11 300	4	17.85	71.40
13	16	11 280	8	17.82	142.56
14	8	11 280	46	4.51	207.46
15	8	445	434	0.18	78.12
16	16	2 240	14	3.54	49.56
17	8	1 405	48	0.56	26.88
TOTAL					3 665.32

- NOTES:
- ALTERNATE POSITION OF EVERY SECOND BAR NUMBER 1 AND 2
 - ALTERNATE POSITION OF EVERY SECOND BAR NUMBER 4 AND 5
 - QUOTED OUTER DIMENSIONS OF REINFORCEMENT
 - FASTENERS min. 2 pcs/m² (DETAIL 2)

CONCRETE C30/37-XC1-CI 0,2-D_{max}16-S4
REINFORCEMENT B500B
NOMINAL COVER min. 30 mm, MINIMAL COVER 20 mm

Author:	Bc. Martin Slavata	Supervisor:	Ing. Josef Novák, Ph.D.	Academic year:	2019/2020	Fakulta stavební ČVUT
Supervisor at Kansas State University:	Professor Hayder A. Rasheed, Ph.D., P.E., F.ASCE			Date:	12/16/2019	
Class:	1330PM Diploma project			Scale:	1:50, 1:20	Drawing no.:
Drawing:	Reinforcement of the deep beam (axis 1)			2		