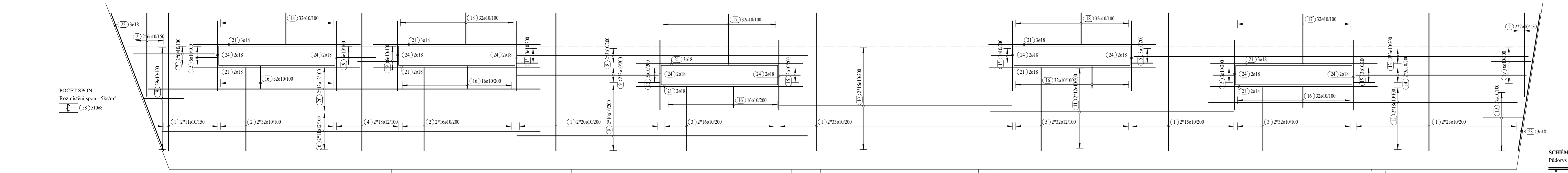


POČET SPON
Rozmístění spon - 5ks/m²
58 820e8



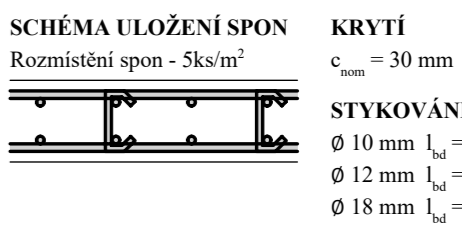
POČET SPON
Rozmístění spon - 5ks/m²
58 510e8

3800	10800	12050
1 204e10, L=3800mm	20 26e12, L=10800mm	39 24e12, L=12050mm
2300	4600	4500
2 112e10, L=2300mm	21 43e18, L=4600mm	40 8e10, L=4500mm
1750	11500	11500
3 96e10, L=1750mm	4070	41 6e10, L=11500mm
3800	3850	11050
4 36e12, L=3800mm	22 3e18, L=4070mm	42 32e10, L=11050mm
2300	3850	3050
5 64e12, L=2300mm	23 3e18, L=3850mm	43 12e10, L=3050mm
10400	1930	9700
6 22e12, L=10400mm	24 46e18, L=1930mm	44 36e10, L=9700mm
2250	2350	11950
7 12e10, L=2250mm	25 108e10, L=2350mm	45 8e10, L=11950mm
8000	1820	5900
8 26e10, L=8000mm	26 64e10, L=1820mm	46 6e10, L=5900mm
3900	4770	1400
9 6e10, L=3900mm	27 54e10, L=4770mm	47 12e12, L=2990mm
6400	4570	5100
10 30e10, L=6400mm	28 44e10, L=4570mm	48 8e18, L=5100mm
3700	4420	8400
11 24e10, L=3700mm	29 48e10, L=4420mm	49 38e10, L=8400mm
8500	4270	12000
12 36e10, L=8500mm	30 28e10, L=4270mm	50 10e10, L=12000mm
10850	4120	5200
13 6e10, L=10850mm	31 60e10, L=4120mm	51 9e18, L=5630mm
4700	2350	600
14 6e10, L=4700mm	32 64e12, L=2350mm	1740
190	3400	4200
15 56e10, L=1390mm	33 12e10, L=3400mm	4200
600	1740	4400
16 459e10, L=1366mm	34 35e10, L=3646mm	2100
1380	1440	130
17 64e10, L=2924mm	35 16e10, L=4366mm	54 3e10, L=1520mm
890	1850	4800
18 96e10, L=1946mm	36 19e10, L=3046mm	2000
1100	12000	8000
19 144e10, L=2390mm	37 16e10, L=3866mm	56 22e18, L=8000mm
	38 80e12, L=12000mm	9150
		57 5e18, L=9150mm
		58 1330e8, L=338mm

VÝKAZ VÝTUŽE

Pol.	Ks	Ø	Jednot. délka [mm]	Celková délka [m]	Hmotnost [kg]
1	204	10	3800	775.20	478.30
2	112	10	2300	257.60	158.94
3	96	10	1750	168.00	103.66
4	36	12	3800	136.80	121.48
5	64	12	2300	147.20	130.71
6	22	12	10400	228.80	203.17
7	12	10	2250	27.00	16.66
8	26	10	8000	208.00	128.34
9	6	10	3900	23.40	14.44
10	30	10	6400	192.00	118.46
11	24	10	6700	160.80	99.21
12	36	10	8500	306.00	188.80
13	6	10	10850	65.10	40.17
14	6	10	4700	28.20	17.40
15	56	10	1390	77.84	48.03
16	459	10	137	626.99	386.86
17	64	10	292	187.14	115.46
18	96	10	195	186.82	115.27
19	144	10	239	348.94	215.30
20	26	12	1080	280.80	249.35
21	43	18	460	197.80	395.20
22	3	12	2440	73.20	44.40
23	3	18	385	115.5	23.08
24	46	18	193	88.78	177.38
25	108	10	235	253.80	156.59
26	64	10	182	116.48	71.87
27	54	10	477	257.58	158.93
28	44	10	457	201.08	124.07
29	48	10	442	212.16	130.90
30	28	10	427	119.56	73.77
31	60	10	412	247.20	155.52
32	64	12	235	150.40	133.56
33	12	10	340	40.80	25.17
34	35	10	365	127.61	78.74
35	16	10	437	69.86	43.10
36	19	10	305	57.87	35.71
37	16	10	387	61.86	38.17
38	78	12	1200	936.00	831.17
39	24	12	1205	289.20	256.81
40	8	10	450	36.00	22.21
41	6	10	1150	69.00	42.57
42	32	10	1105	353.60	218.17
43	12	10	305	36.60	23.58
44	36	10	970	349.20	215.46
45	8	10	1195	95.60	58.99
46	8	10	590	47.20	29.12
47	12	12	299	35.88	31.86
48	8	18	510	40.80	81.52
49	38	10	840	319.20	196.95
50	10	10	1200	120.00	74.04
51	9	18	563	50.67	101.24
52	3	18	520	15.60	31.17
53	3	18	420	12.60	25.17
54	3	10	152	4.56	2.81
55	2	18	480	9.60	19.18
56	22	18	800	176.00	351.65
57	5	18	915	45.75	91.41
58	1330	8	0.34	449.54	177.57

Celková hmotnost [kg]: 7674.82



KRYTÍ
c_{min} = 30 mm

VÝTUŽ KÓTOVÁNA K VNĚJŠÍMU POVRCHU
BETON C30/37 - XC1 - CI 0,2 - Dmax 16 - S3
OCEL B500B

Výpracovala Bc. Kateřina Lamberská	Úloha Diplomová práce	ČVUT FSV
Varianta A	Datum 12/2019	Měřítka 1:50
VÝKRES VÝTUŽE	Formát 6x4	Príloha 4
STĚNA - ZÁPAD		