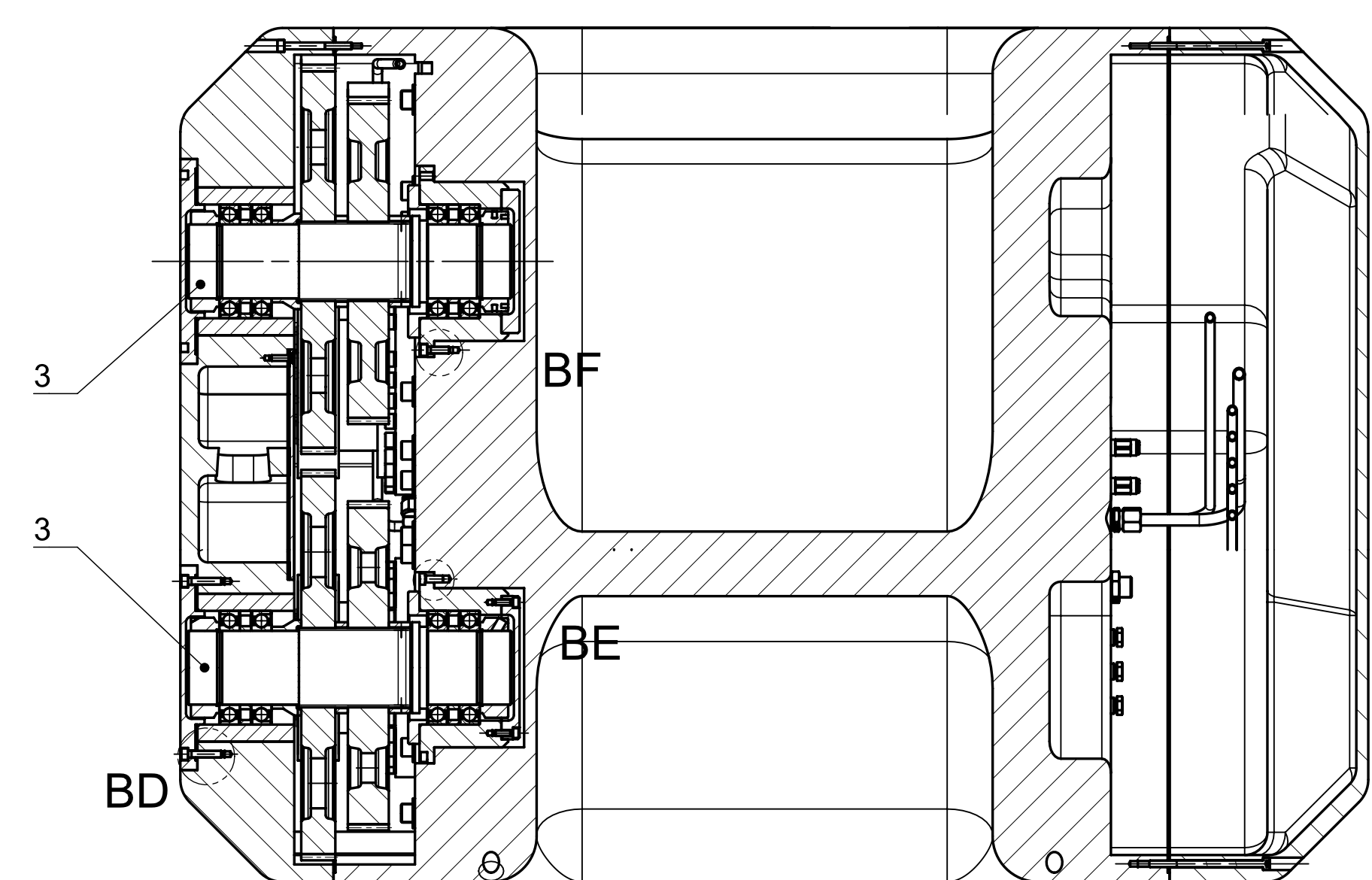
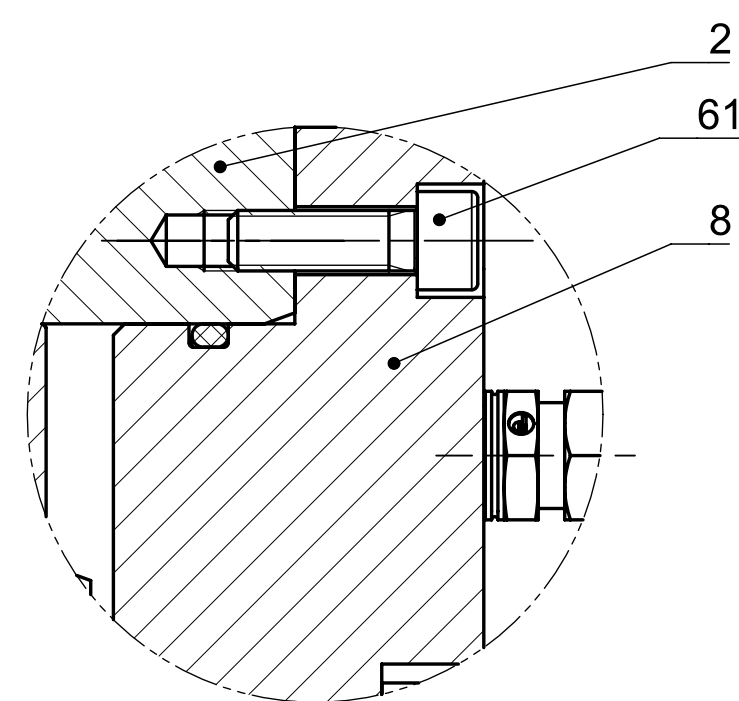


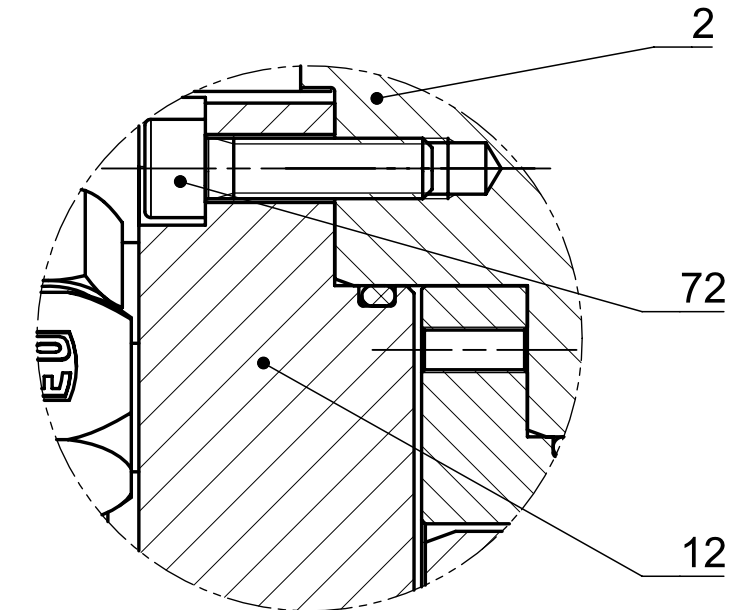
T-T



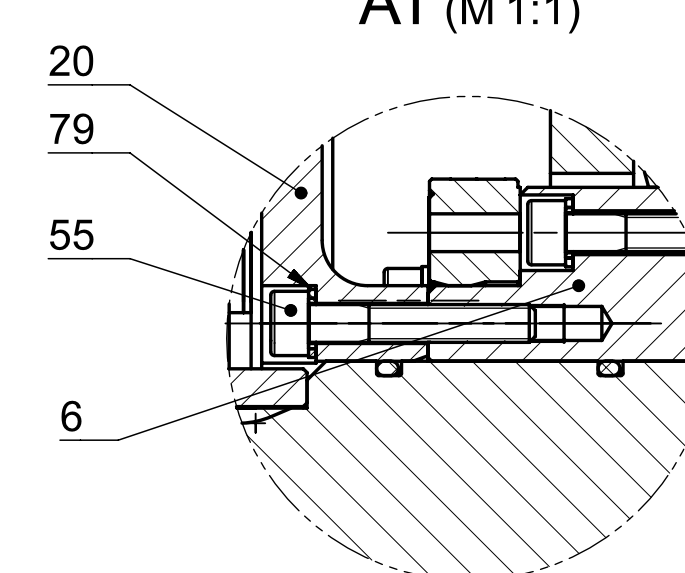
AV (M 1:1)



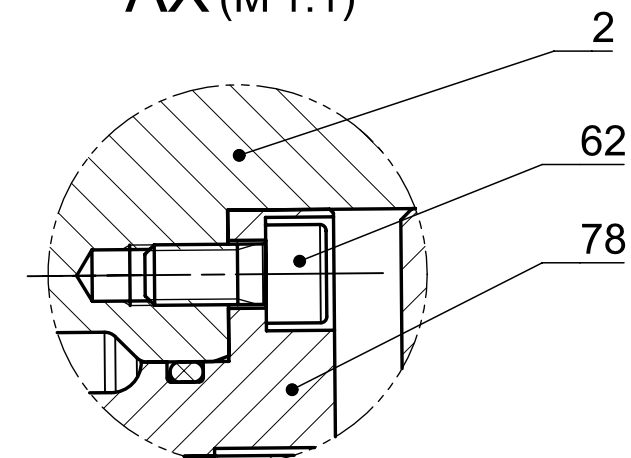
AU (M 1:1)



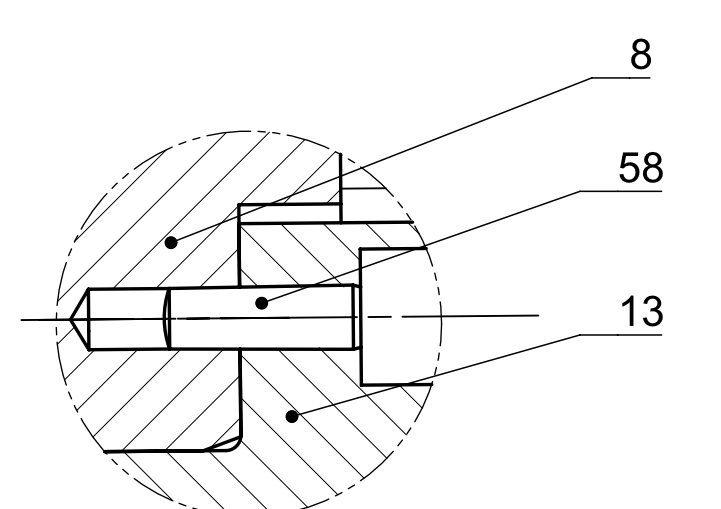
AT (M 1:1)



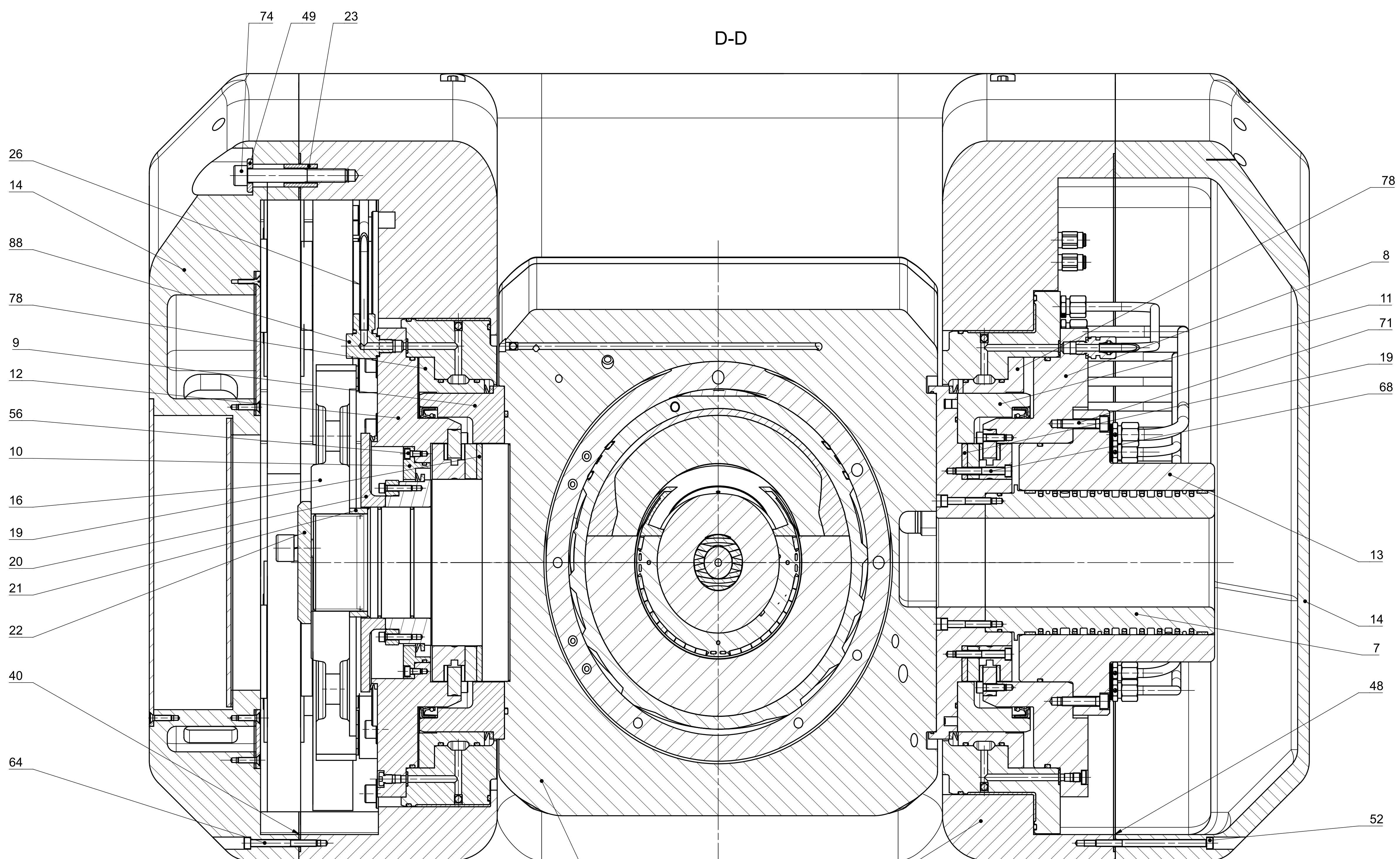
AX (M 1:1)



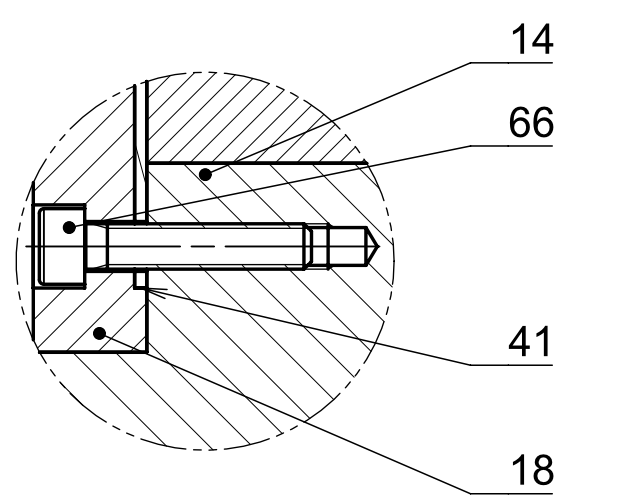
AW (M 1:1)



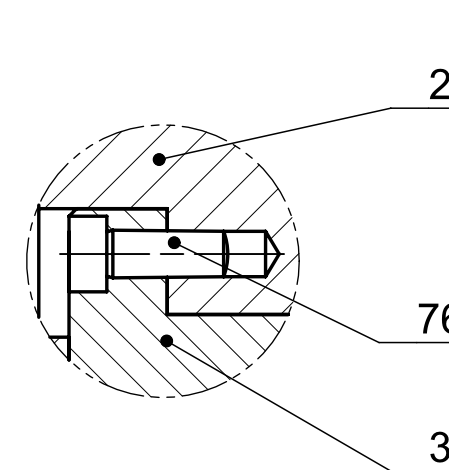
D-D



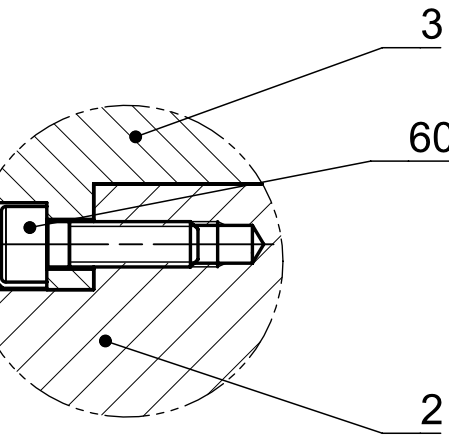
BD (M 1:1)



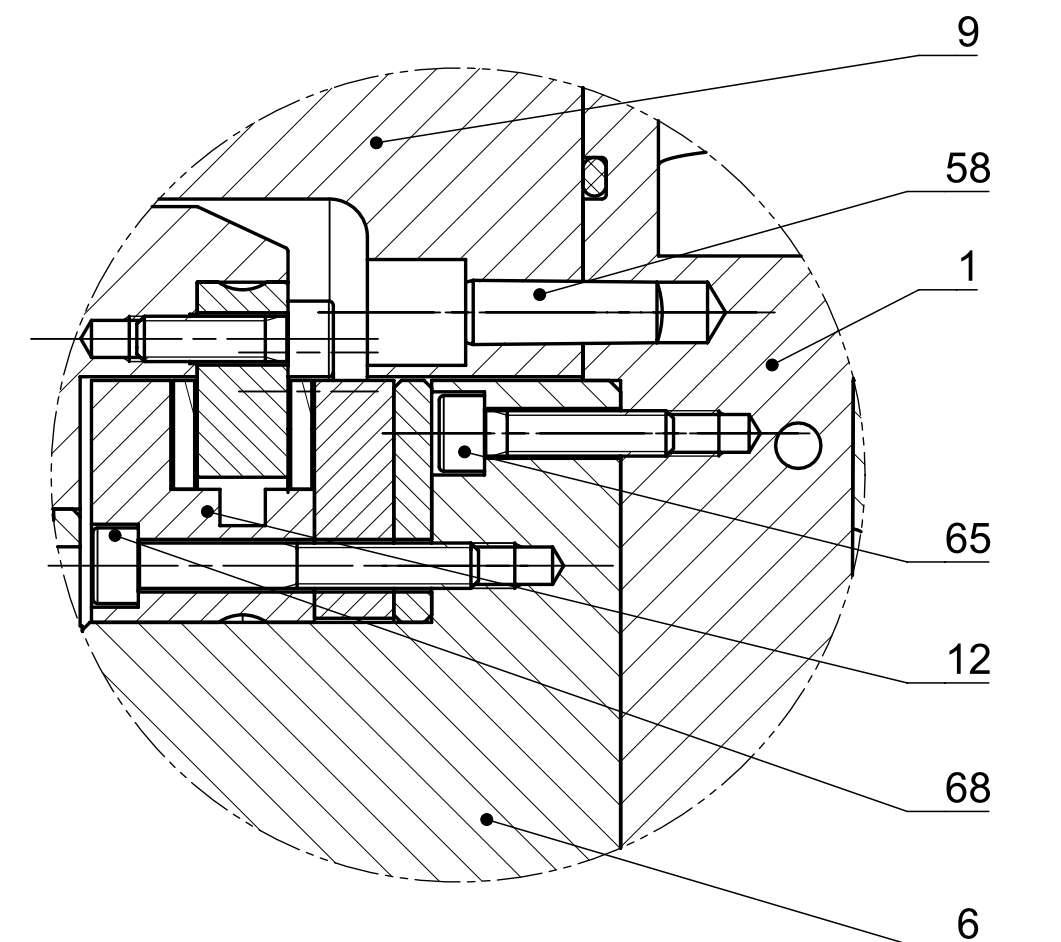
BE (M 1:1)



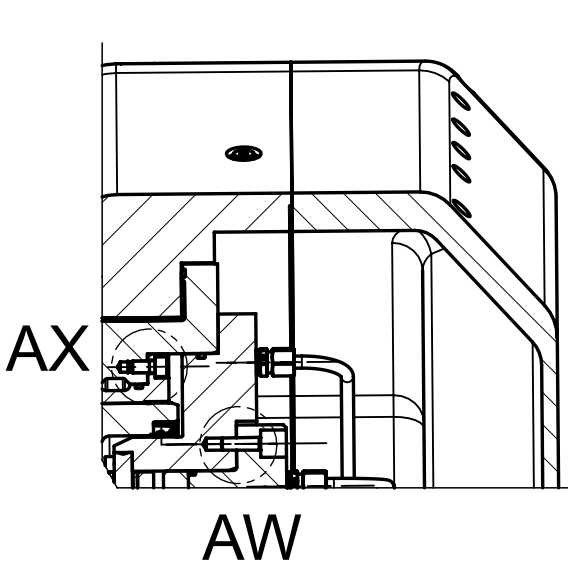
BF (M 1:1)



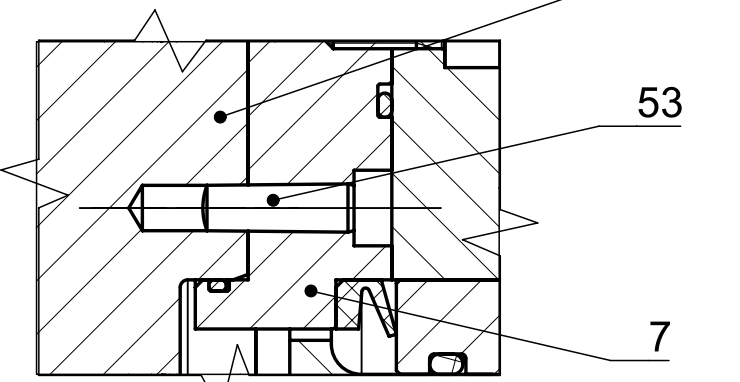
BA (M 1:1)



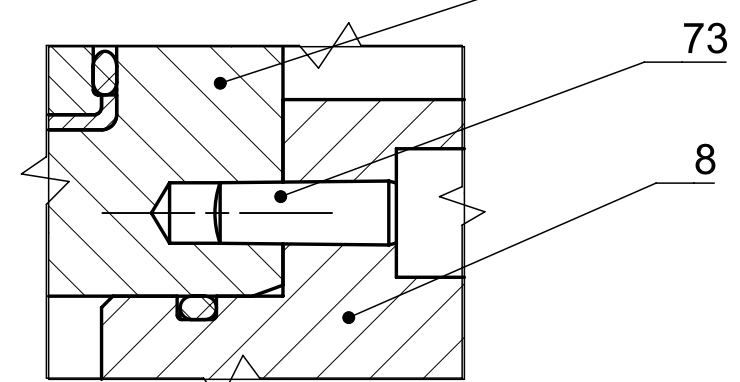
AB-AB



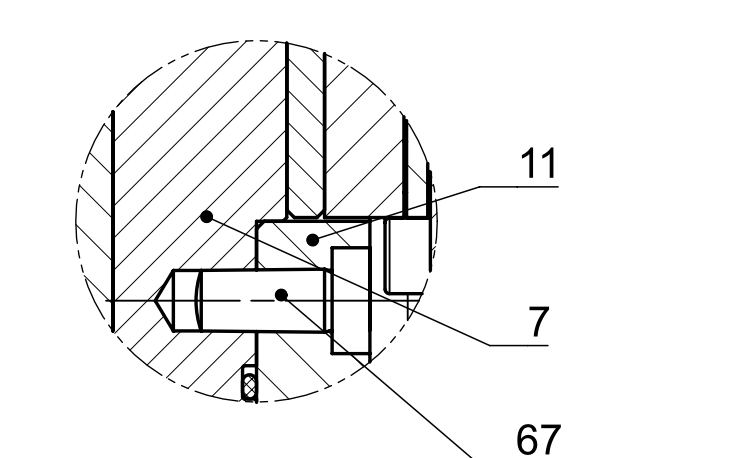
AC-AC (M 1:1)



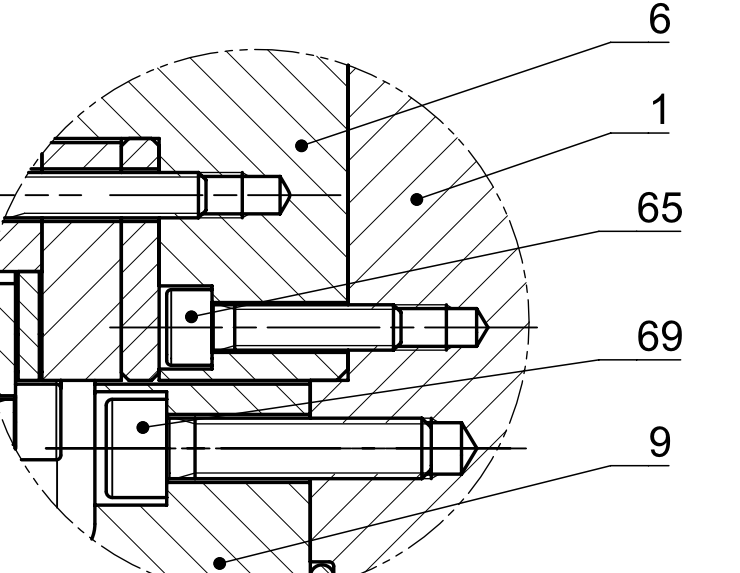
AA-AA (M 1:1)



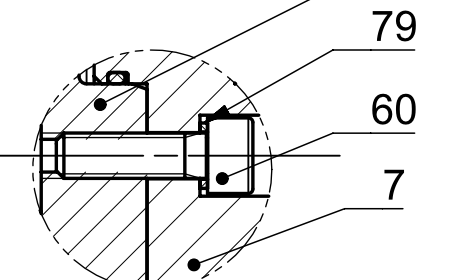
AZ (M 1:1)



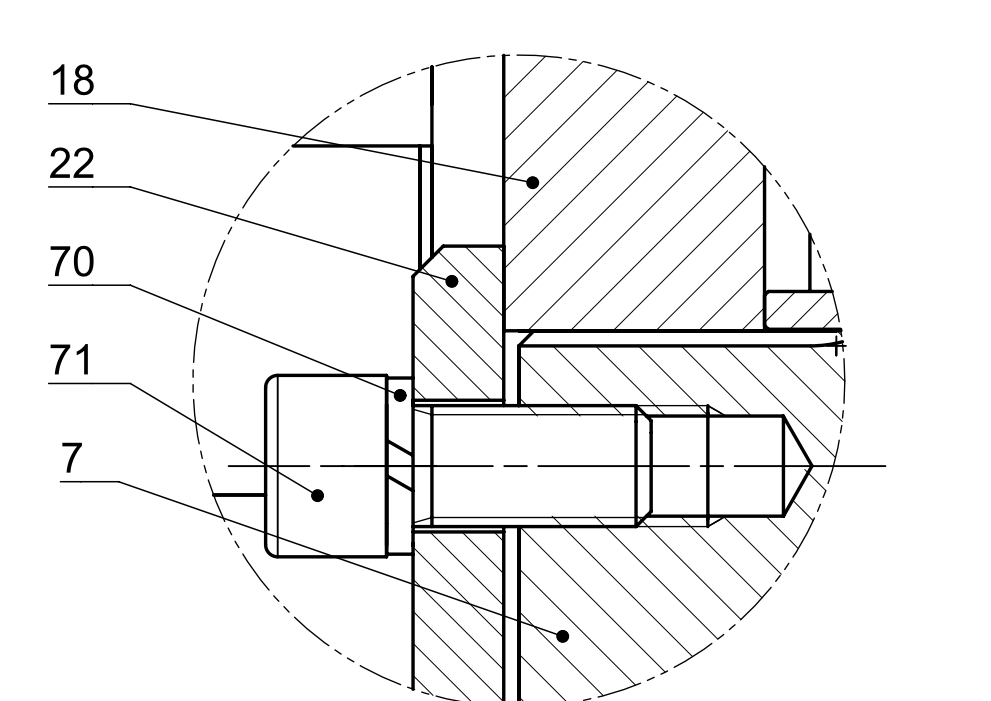
AY (M 1:1)



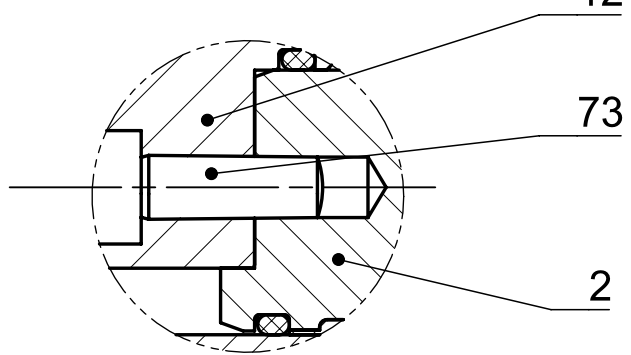
BB (M 1:1)



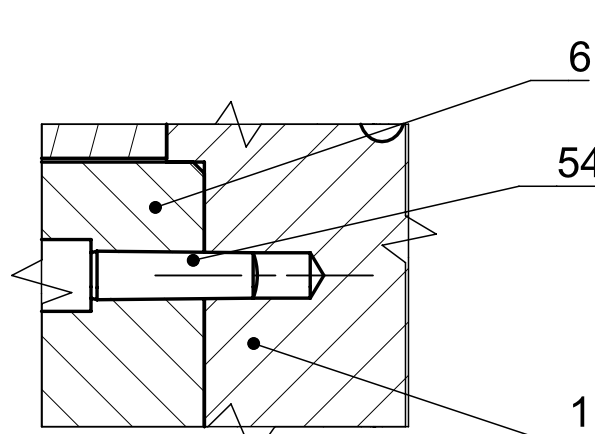
BC (M 1:1)



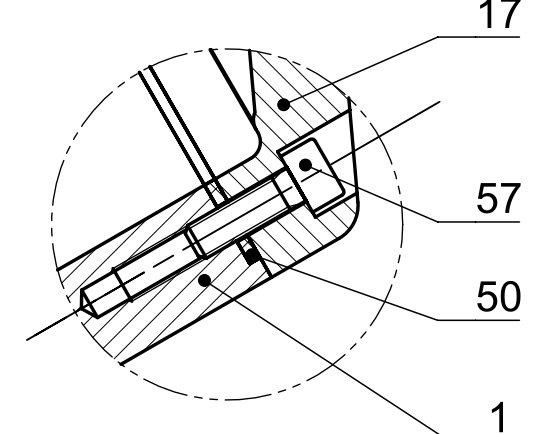
AR (M 1:1)



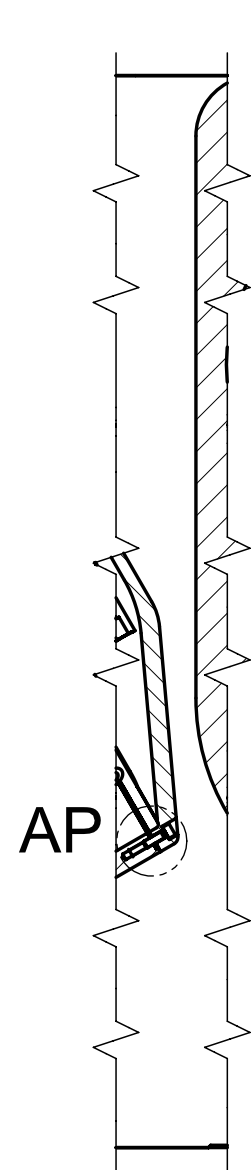
W-W (M 1:1)



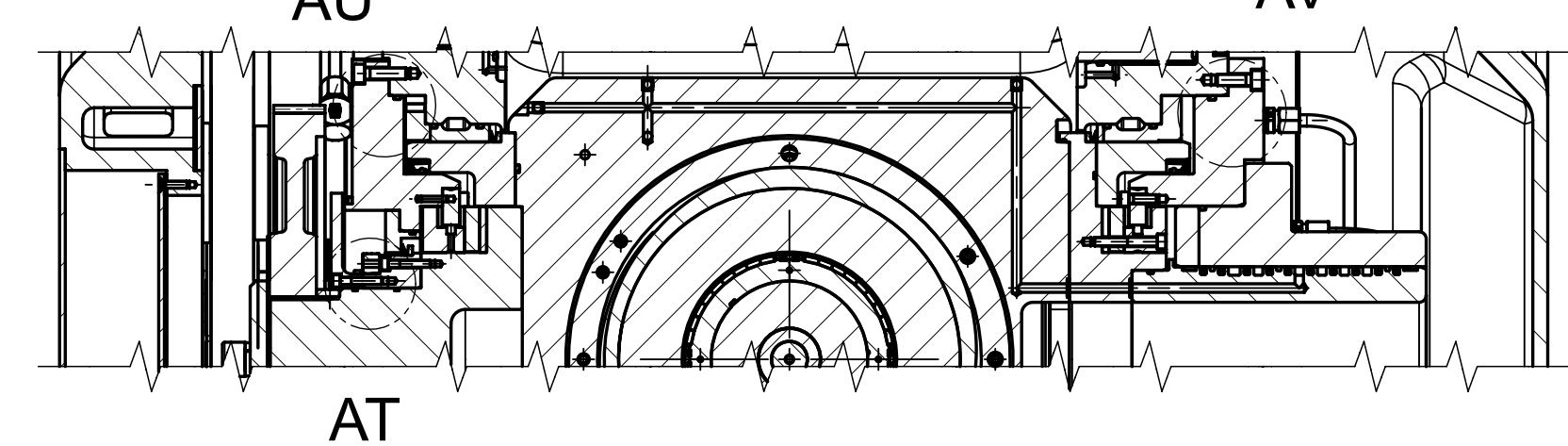
AP (M 1:1)



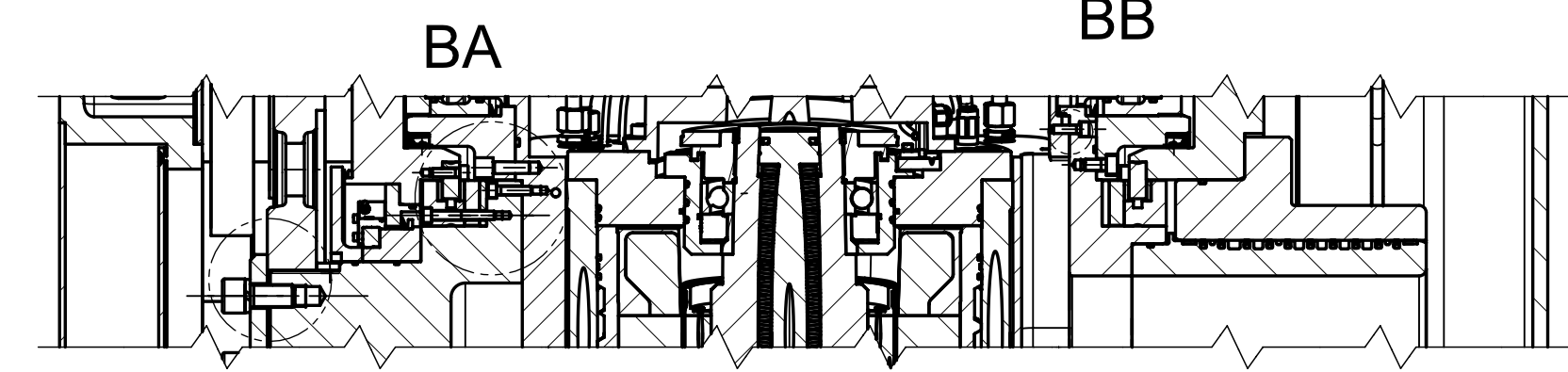
U-U



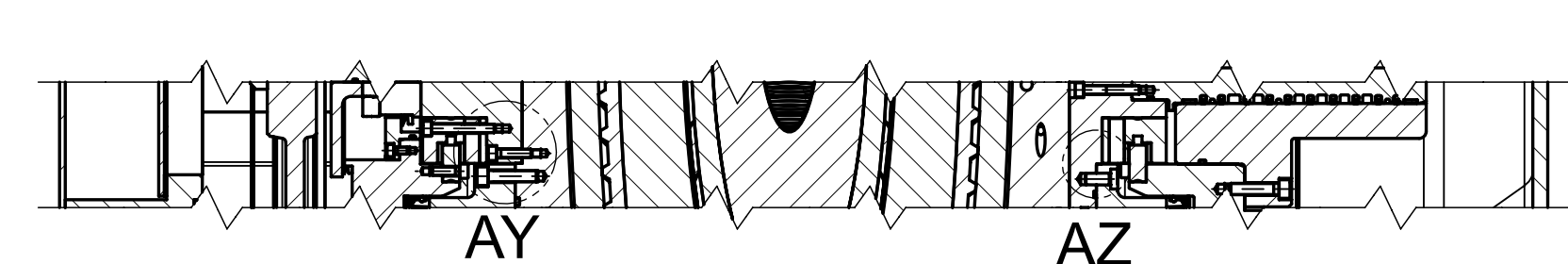
Y-Y



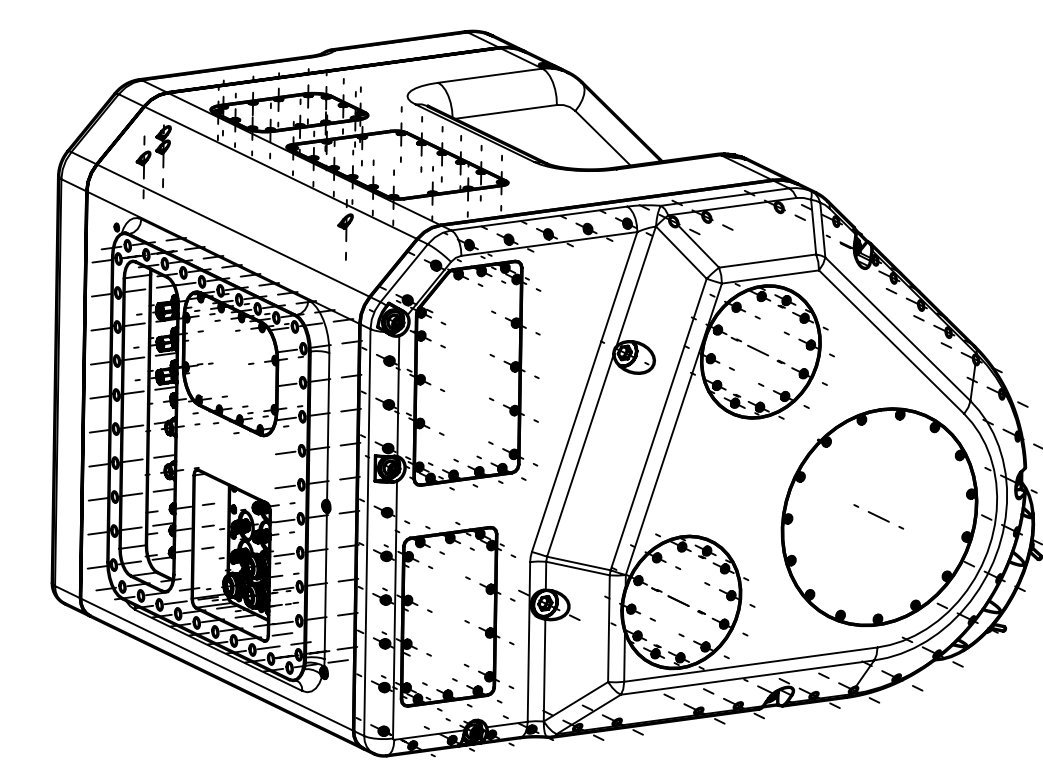
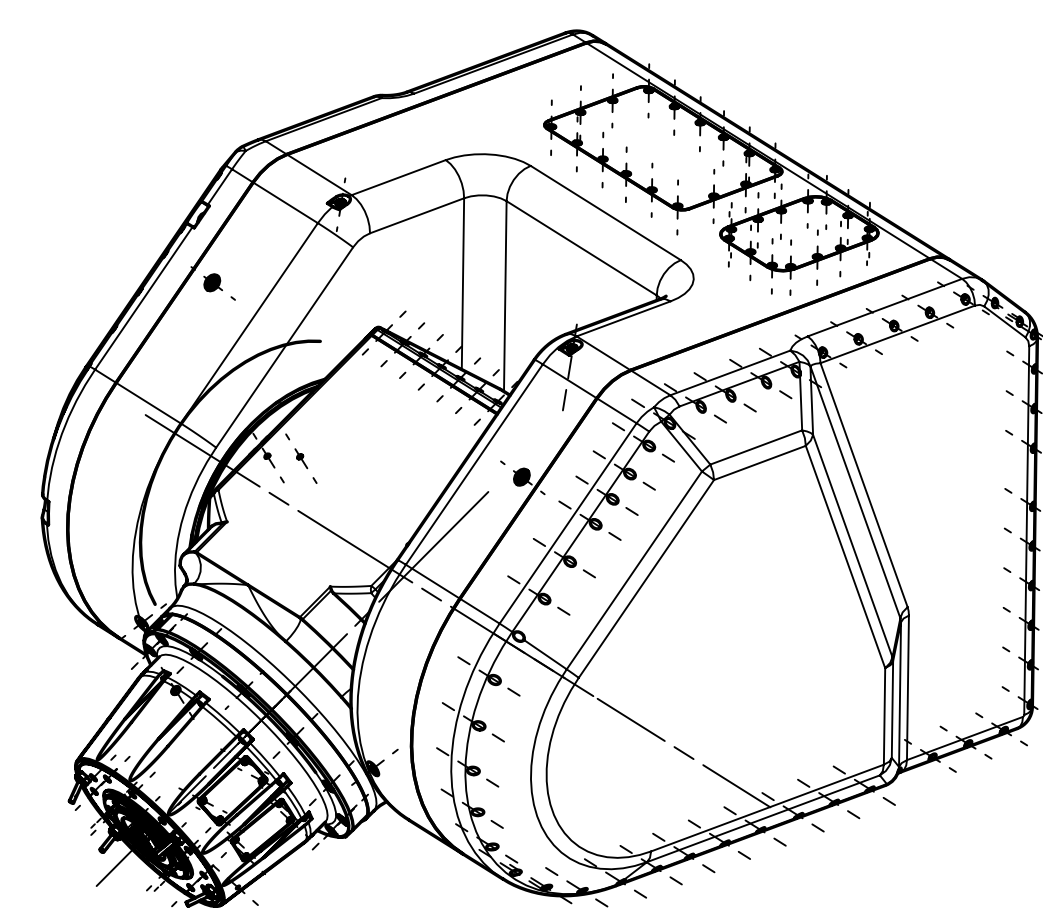
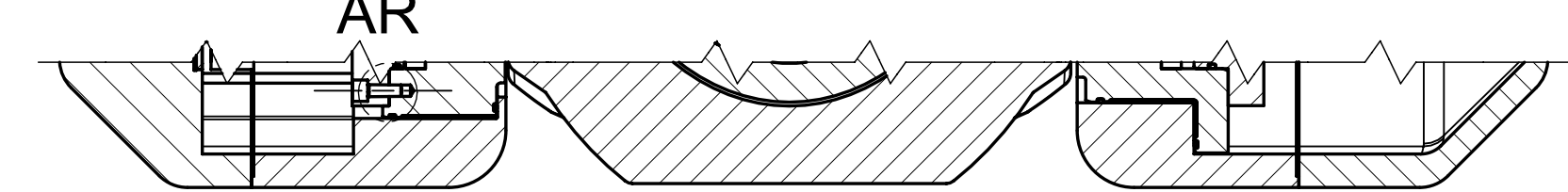
AD-AD



X-X



Z-Z



MATERIAL	KRESILA	KMOT	16.12.2019
POLOTOVAR	EMENIL	KMOT	04.01.2020
PREZNOST ISO 2768 mK	HMOTN (kg)		
PROJEKTANT			
TOLEROVANI PODLE ISO			
NEOZNACENE DRSNOSTI Ra			
PROJEKT			
STATUS			
MERITKO 1:5			
ALTERNATIVNI CILO			
Výzkumné centrum pro strojírenskou výrobní techniku a technologii		NAZEV VIDLICOVA HLAVA	
		CÍSLO VÝKRESU	
		LIST 2	
		ASM_000004317/00	
		LISTU 2	