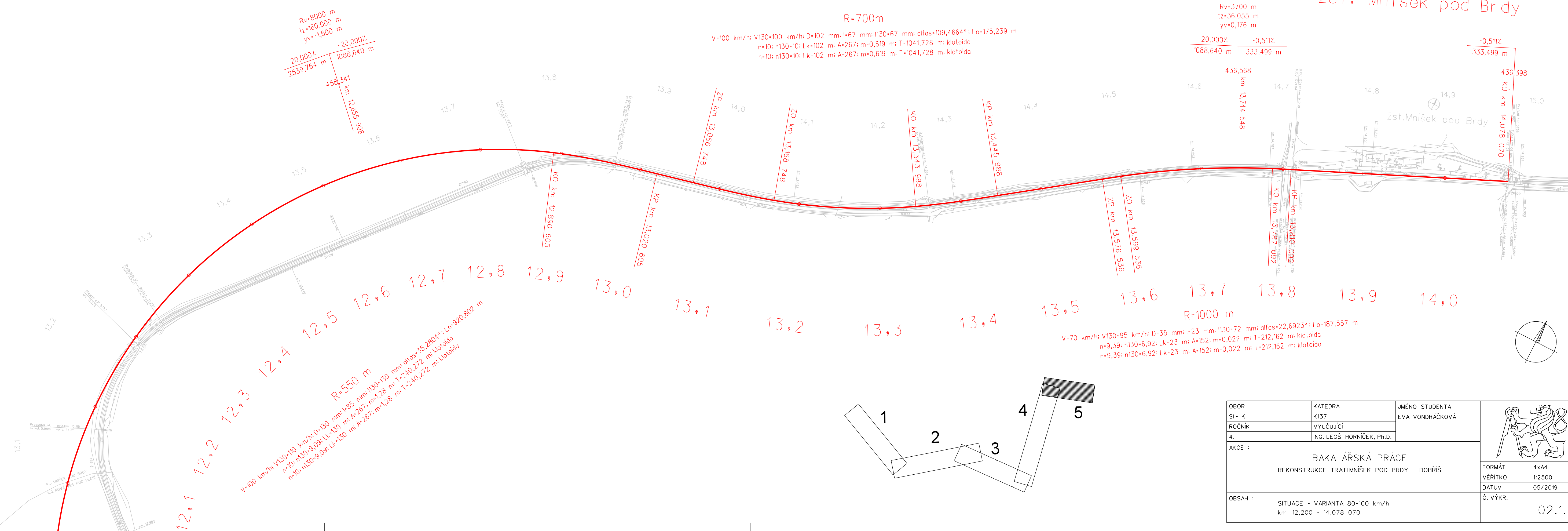


SITUACE - VARIANTA 80-100 km/h

km 12,200 - 14,078 070

M 1:2500

Žst. Mníšek pod Brdy



$R_v=8000$ m
 $t_z=160,000$ m
 $y_v=-1,600$ m

$R=700$ m
 $V=100$ km/h; $V_{130}=100$ km/h; $D=102$ mm; $l=67$ mm; $l_{130}=67$ mm; $\alpha_{fms}=109,4664^\circ$; $L_0=175,239$ m
 $n=10$; $n_{130}=10$; $L_k=102$ m; $A=267$; $m=0,619$ m; $T=1041,728$ m; klotoida
 $n=10$; $n_{130}=10$; $L_k=102$ m; $A=267$; $m=0,619$ m; $T=1041,728$ m; klotoida

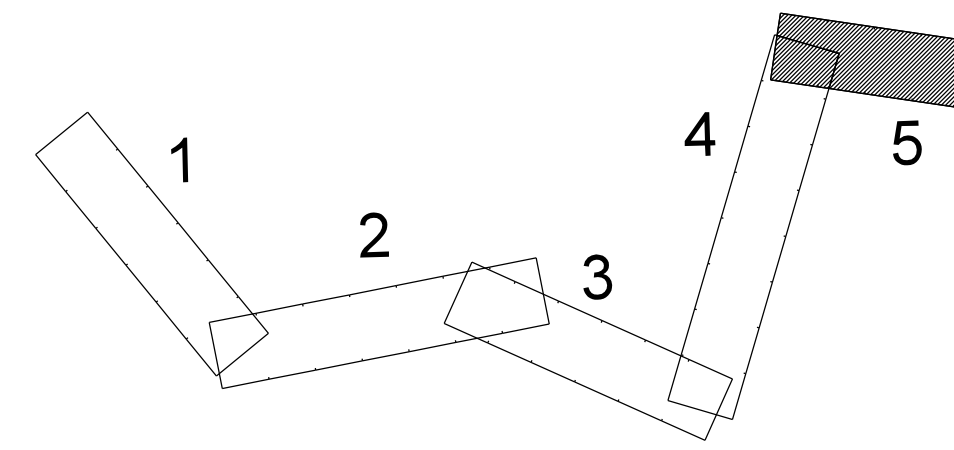
$R_v=3700$ m
 $t_z=36,055$ m
 $y_v=0,176$ m

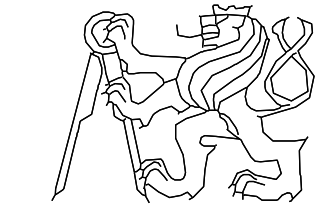
-20,000% | -0,511%
 1088,640 m | 333,499 m

-0,511%
 333,499 m

$R=550$ m
 $V=100$ km/h; $V_{130}=110$ km/h; $D=130$ mm; $l=85$ mm; $l_{130}=130$ mm; $\alpha_{fms}=35,2804^\circ$; $L_0=920,802$ m
 $n=10$; $n_{130}=9,09$; $L_k=130$ m; $A=267$; $m=1,28$ m; $T=240,272$ m; klotoida
 $n=10$; $n_{130}=9,09$; $L_k=130$ m; $A=267$; $m=1,28$ m; $T=240,272$ m; klotoida

$R=1000$ m
 $V=70$ km/h; $V_{130}=95$ km/h; $D=35$ mm; $l=23$ mm; $l_{130}=72$ mm; $\alpha_{fms}=22,6923^\circ$; $L_0=187,557$ m
 $n=9,39$; $n_{130}=6,92$; $L_k=23$ m; $A=152$; $m=0,022$ m; $T=212,162$ m; klotoida
 $n=9,39$; $n_{130}=6,92$; $L_k=23$ m; $A=152$; $m=0,022$ m; $T=212,162$ m; klotoida



OBOR	KATEDRA	JMÉNO STUDENTA		
SI - K	K137	EVA VONDRÁČKOVÁ		
ROČNÍK	VYUČUJÍCÍ			
4.	ING. LEOŠ HORNÍČEK, Ph.D.			
AKCE :	BAKALÁŘSKÁ PRÁCE REKONSTRUKCE TRATIMNÍŠEK POD BRDY - DOBRŠÍ		FORMÁT	4x4
			MĚŘÍTKO	1:2500
			DATUM	05/2019
OBSAH :	SITUACE - VARIANTA 80-100 km/h km 12,200 - 14,078 070		Č. VÝKR.	02.15