

# “M” execution with clamp hubs

This type of coupling permits quick, positive mounting, without any shaft-hub backlash. With the keyless coupling type, the torque applied for tightening

down the screws (Ms) must be as given in the table. **The M coupling type is available with or without keyway. Approved according to ATEX Directive.**

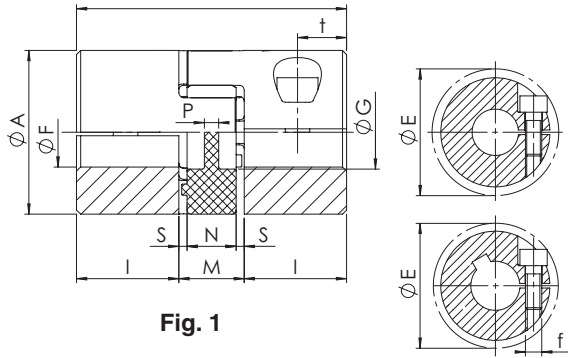


Fig. 1

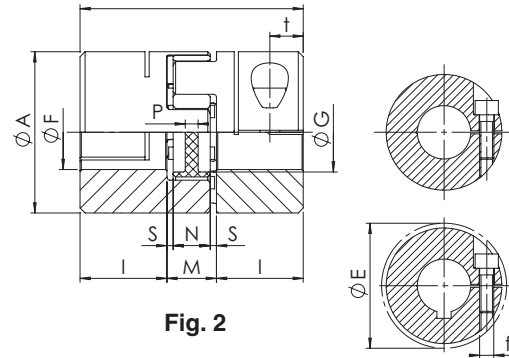


Fig. 2

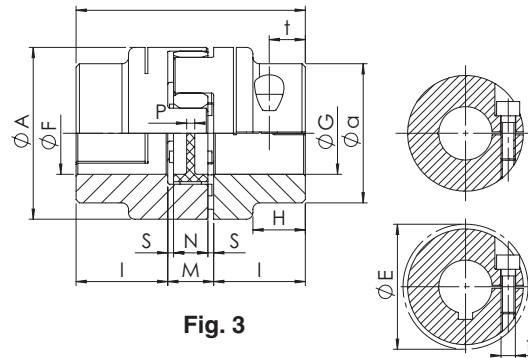


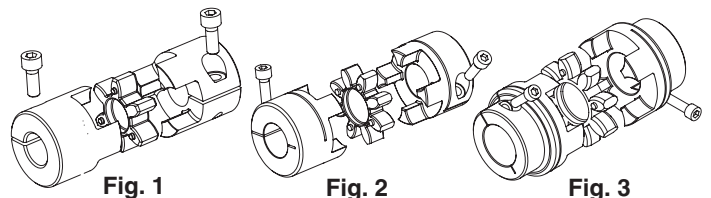
Fig. 3

Size	F min [mm]	F max [mm]	f	Ms [Nm]	Hub		n <sub>max</sub> [min <sup>-1</sup> ]
					W [kg]	J [kgm <sup>2</sup> ]	
<b>ALUMINUM HUBS</b>							
7	3	7	M2	0,35	0,003	0,085 x 10 <sup>-6</sup>	40.000
9	4	10	M2,5	0,75	0,007	0,42 x 10 <sup>-6</sup>	28.000
12	12	25	M3	1,4	0,015	1,4 x 10 <sup>-6</sup>	22.000
14	6	16	M3	1,4	0,018	2,6 x 10 <sup>-6</sup>	19.000
19/24	10	24 <sup>(1)</sup>	M6	11	0,071	18,1 x 10 <sup>-6</sup>	14.000
24/28	10	32	M6	11	0,156	74,9 x 10 <sup>-6</sup>	10.600
28/38	14	35	M8	25	0,240	163,9 x 10 <sup>-6</sup>	8.500
38/45	19	45	M8	25	0,440	465,5 x 10 <sup>-6</sup>	7.100
<b>STEEL HUBS</b>							
42	25	50	M10	70	2,100	3.095 x 10 <sup>-6</sup>	6.000
48	25	55	M12	120	2,900	5.160 x 10 <sup>-6</sup>	5.600
55	35	70	M12	120	4,000	9.737 x 10 <sup>-6</sup>	5.000
65	40	80	M14	190	5,800	17.974 x 10 <sup>-6</sup>	4.600
75	40	80	M16	295	8,100	29.304 x 10 <sup>-6</sup>	2.950

Keyway position	A [mm]	G [mm]	H-a [mm]	L [mm]	I [mm]	M [mm]	N [mm]	S [mm]	P [mm]	t [mm]	E [mm]	Fig.
-	14	-	-	22	7	8	6	1,0	6	4	15,0	1
-	20	7,2	-	30	10	10	8	1,0	2	5	23,4	1
180°	25	8,5	-	34	11	12	10	1,0	3	5	27	1
180°	30	10,5	-	35	11	13	10	1,5	2	5,5	32,2	1
120°	40	18	-	66	25	16	12	2,0	3,5	12	45,7 <sup>(1)</sup>	1
90°	55	27	-	78	30	18	14	2,0	4	12	57,5	2
90°	65	30	-	90	35	20	15	2,5	5,2	13,5	72,6	2
90°	80	38	-	114	45	24	18	3,0	5,6	16	83,3	2
<b>STEEL HUBS</b>												
-	95	46	-	126	50	26	20	3,0	5,6	20	78,8	2
-	105	51	-	140	56	28	21	3,5	6	21	108,0	2
-	120	60	-	160	65	30	22	4,0	9	26	122,0	2
-	135	68	-	185	75	35	26	4,5	8,3	27,5	139,0	2
-	160	80	53-135	210	85	40	30	5,0	8,3	30	147,5	3

<sup>(1)</sup> Size 19/24 up to bore Ø 20 screw M6, over M5 screw (Ø E= 46,7 mm)  
 From size 7 to 19/24: single slot execution  
 From size 24/28 to 65: double slot execution  
 Bore tolerance: F7 - JS9 (DIN 6885/1) keyway

M <sub>S</sub>	Screw tightening torque	Nm
W	Weight	kg
J	Coupling moment of inertia	kgm <sup>2</sup>
n <sub>max</sub>	Maximum rpm	min <sup>-1</sup>



**Hub** **GESM 48 F50**

GESM: TRASCO® ES hub

Size

F...: bore diameter  
F...C: bore diameter and keyway

**Spider** **AES 24/28 R**

TRASCO® ES spider

Size

B: 80 Sh A (blue)  
G: 92 Sh A (yellow)  
R: 98 Sh A (red)  
V: 64 Sh D (green)

Using hub execution **M** without keyway, the maximum transmissible torque is the minor between the clamp-hub transmissible torque and the value stated in the section “**Technical characteristics**”.

Size	Recommended <b>M</b> coupling Type Hub Bore Dia. [mm] and Transmissible Torque [Nm], valid for shaft tolerances k6																																					
	3	4	5	6	7	8	9	10	11	12	14	15	16	18	19	20	22	24	25	28	30	32	35	38	40	42	45	48	50	55	60	65	70	75	80			
7	0,9	1,0	1,0	1,1	1,2																																	
9		2,1	2,3	2,4	2,5	2,6	2,7																															
12		4,1	4,2	4,4	4,6	4,8	5,0	5,2	5,4	5,5																												
14			5,0	5,2	5,4	5,5	5,7	5,9	6,1	6,3	6,7	6,8	7,0																									
19/24								28	29	29	31	31	32	34	34	35	30	32																				
24/28								24	27	29	34	37	39	44	46	49	54	59	61	68	73	78																
28/38											58	62	66	75	79	83	91	100	104	116	124	133	145															
38/45												62	66	75	79	83	91	100	104	116	124	133	145	158	166	174	187											
42																139	153	167	174	195	209	223	243	264	278	292	313	334	348									
48																			254	285	305	326	356	387	407	428	458	489	509	560								
55																							326	356	387	407	428	458	489	509	560	611	662	713				
65																								488	530	558	586	628	670	697	767	837	907	976	1046	1116		
75																									769	808	865	923	961	1057	1154	1250	1346	1442	1538			

TRASCO® ES