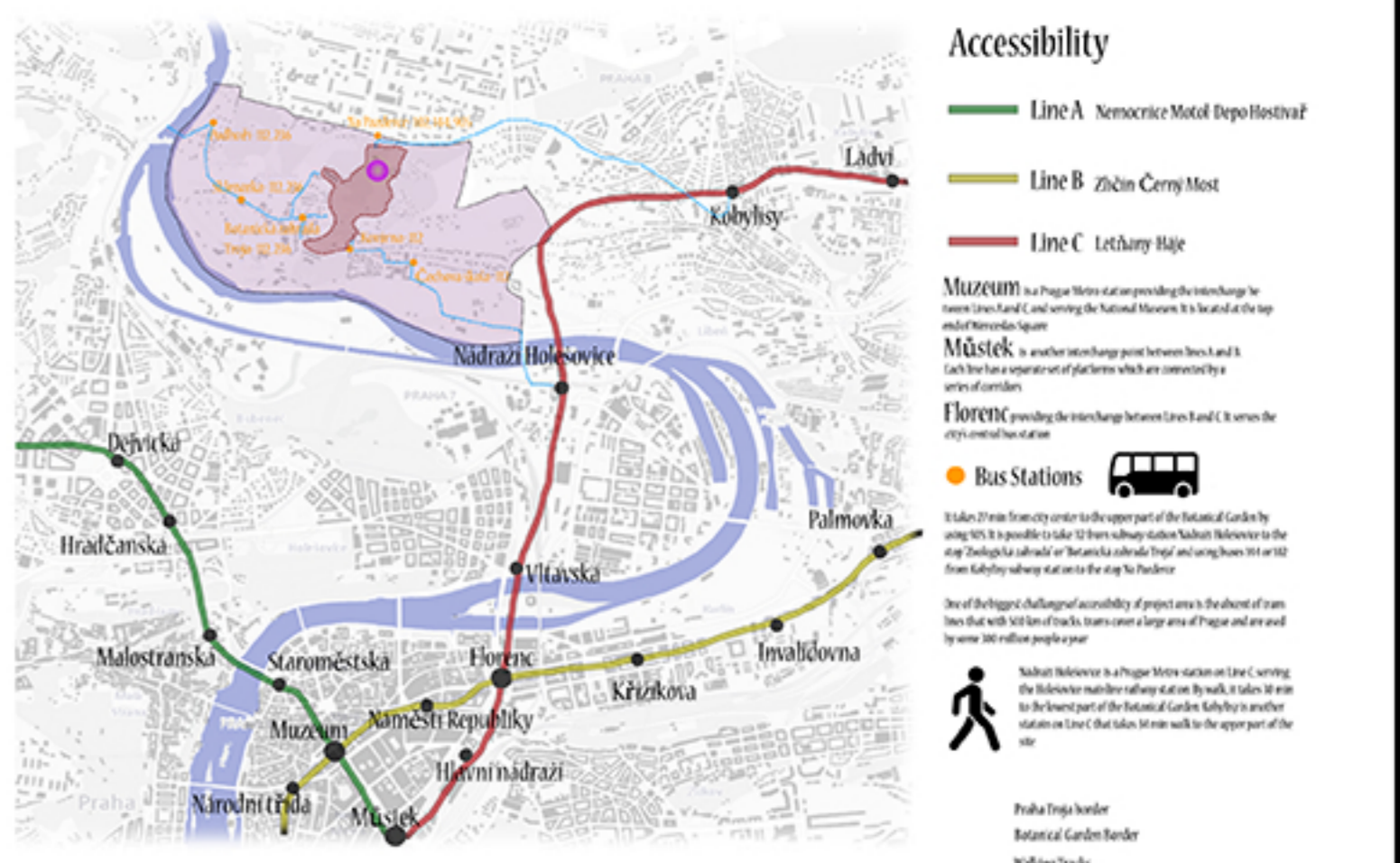




Prague
Prague, capital city of the Czech Republic, is divided by the Vltava River. Nicknamed the City of a Hundred Spires, it's known for its tall towers. Square, the heart of its historic core, with colorful Baroque buildings, Gothic churches and the medieval Astronomical Clock, which gives an animated hourly show. Completed in 1402, pedestrian Charles Bridge is lined with statues of Catholic saints. Prague is full of historic monuments, lively squares and winding lanes of cobble stone. In a city with such rich cultural heritage, Prague also features a variety of parks and gardens, some formal sculpted Baroque gardens, some smaller secret gardens and even some large wild parks.

Prague Troja
Area: 69,600 ha
Population: 239,435
Coordinates: 50°05'N 14°25'E

On the banks of the Vltava, leafy Troja is a peaceful residential suburb with several high-profile attractions. The baroque Troja Castle houses both century Czech paintings and hosts wine festivals and concerts in its manicured gardens, while Prague Zoo is home to elephants and Komodo dragons. The hillside Botanical Garden offers sweeping views, and a tropical greenhouse and a wine shop at St. Claire's Vineyard.

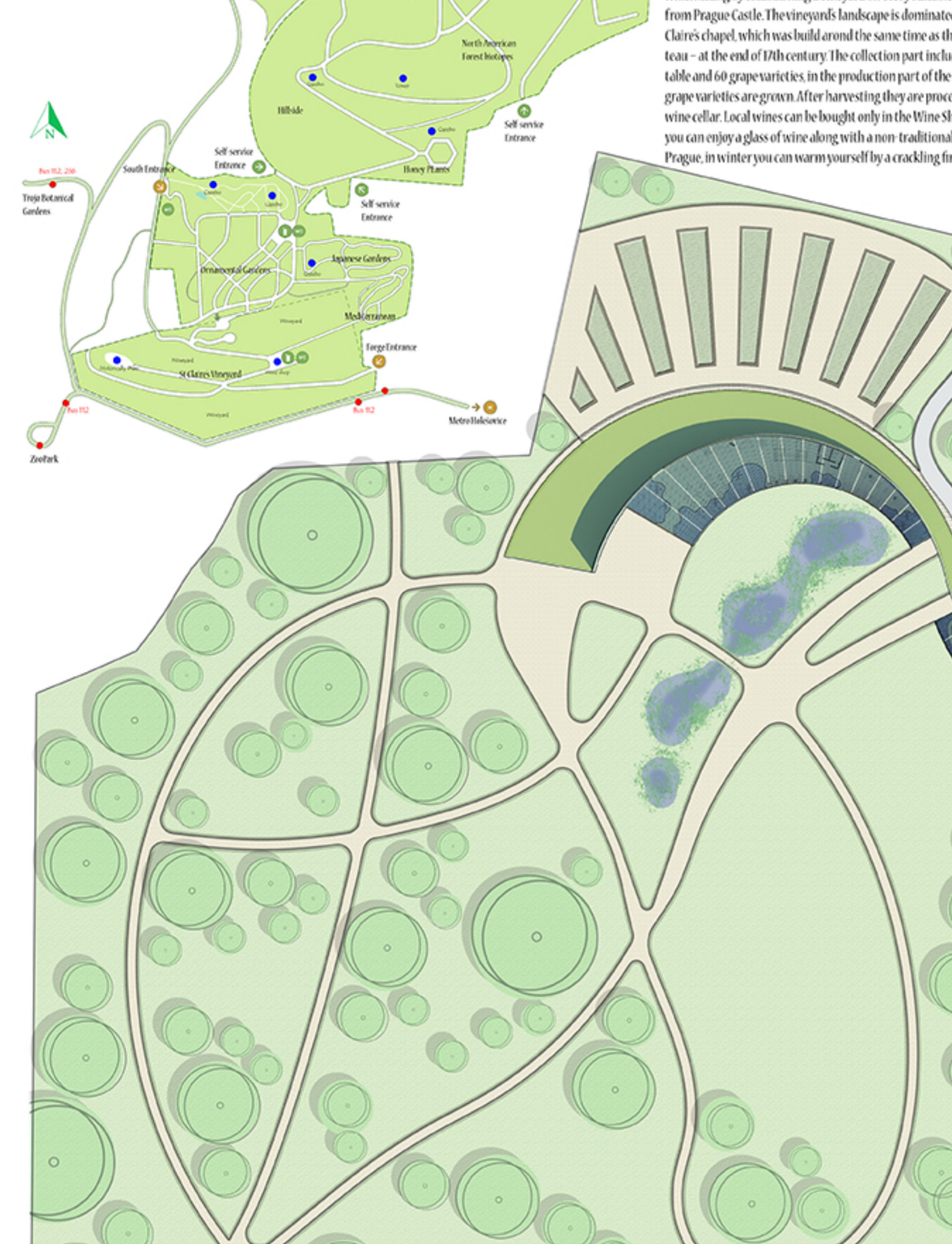


Prague Botanical Garden

The botanical garden spreads over the Troja basin, its surface area being approx. 30 ha in a very rugged terrain, elevated 179 to 276 meters above sea level. The plan for building a botanical garden in this area was approved in 1968. The garden was then realized according to the winning project of academic architects Josef Hřez and Jitka Svobodová and Ing. Jiří Jäger. Building the garden is a long-term project, due to its extension. Until 1992, the garden was not generally accessible, and the initial exposition was opened on a surface area of 1 ha. It is arranged as a park with reflections of small lush plants, perennial annual flowers and healing plants, moss plants, succulents, and hydrophilic plants, with greenhouses with alpine plants and an apartment of dendrology with domestic and foreign coniferous shrubs. Today's area, which is open for public in the seasons, spreads on an area of 1 ha and apart from the initial exposition, we can also see a Japanese garden 4 here with original kinds of Japanese plants, a geographical exposition of plants from Turkey and the Mediterranean with a collection of iris. Below, there is a unique floral sandal in the garden.

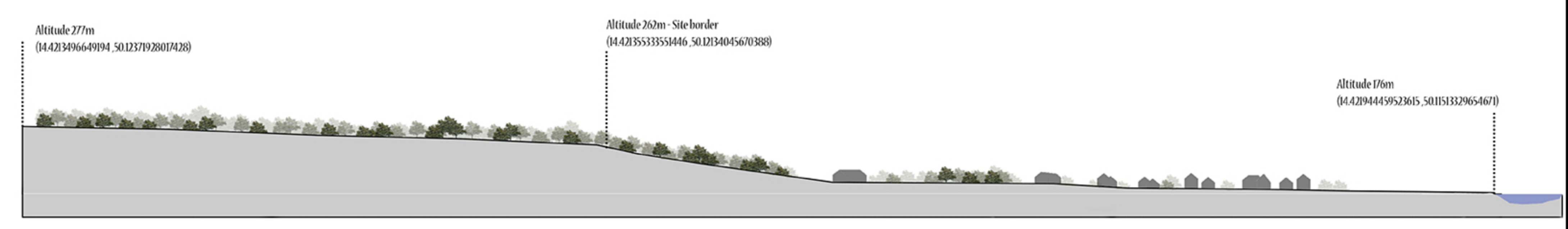
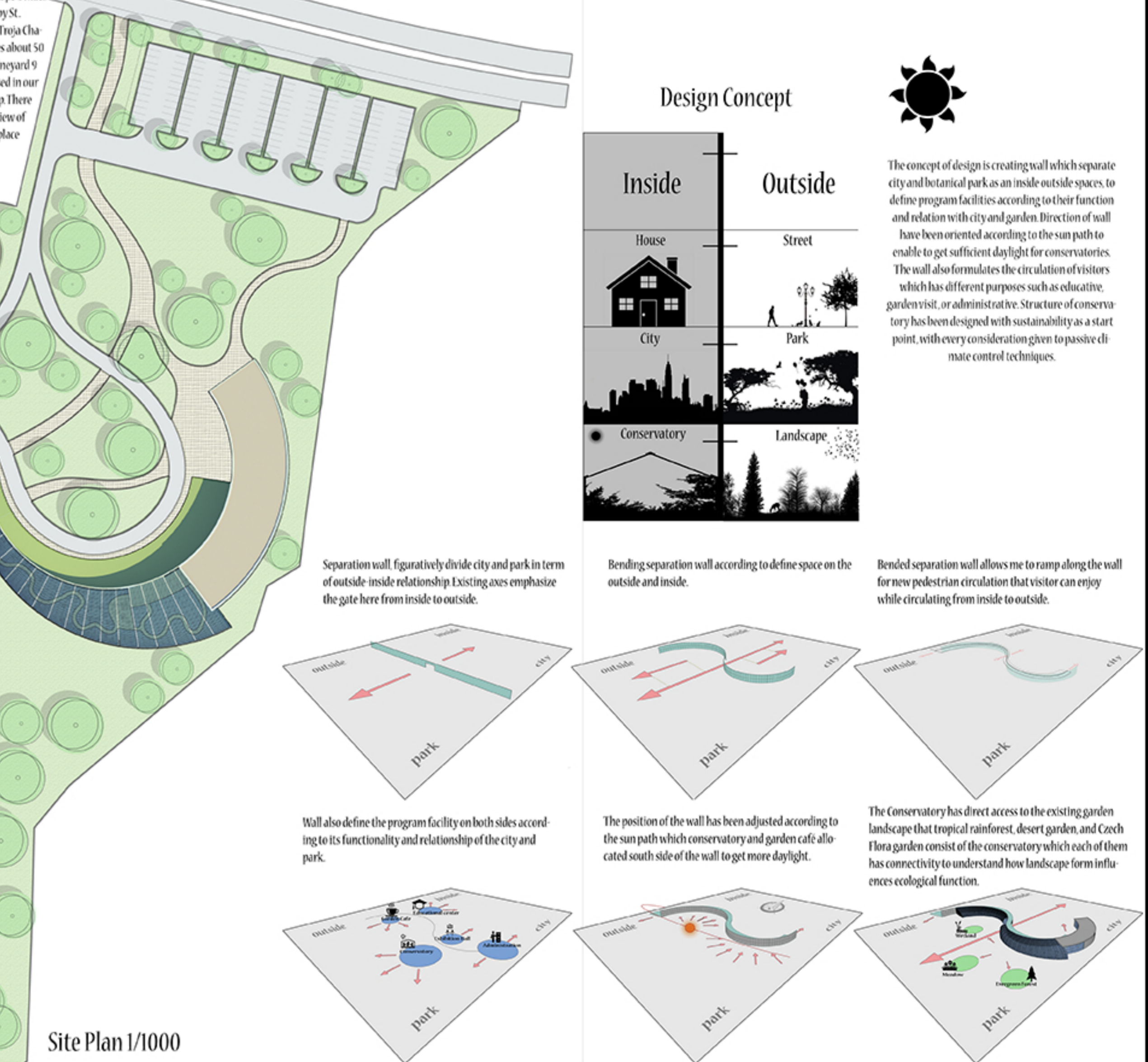
St. Claire's Vineyard

Spanning 35 hectares, our vineyard is the second largest in Prague and is considered a "national heritage". It was here established during the 18th century in the time of reign of Empress Maria Theresa. It was there in times of Charles IV who supported the winemaking by establishing a vineyard on every suitable slope 1 mile from Prague Castle. The vineyard's landscape is dominated by St. Claire's Chapel, which was built on the same time as the Troja Castle - at the end of 18th century. The collection part includes about 50 table and 10 grape varieties in the production part of the vineyard. 9 grape varieties are grown. After harvesting they are processed in our wine cellar. Local wines can be bought only in the Wine Shop. There you can enjoy a glass of wine along with a warm traditional view of Prague, in winter you can warm yourself by a crackling fireplace.

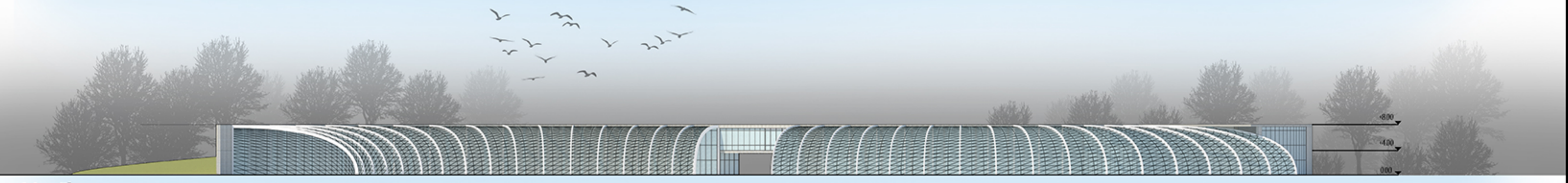


Integrated Daylight Design on Czech Flora Conservatory

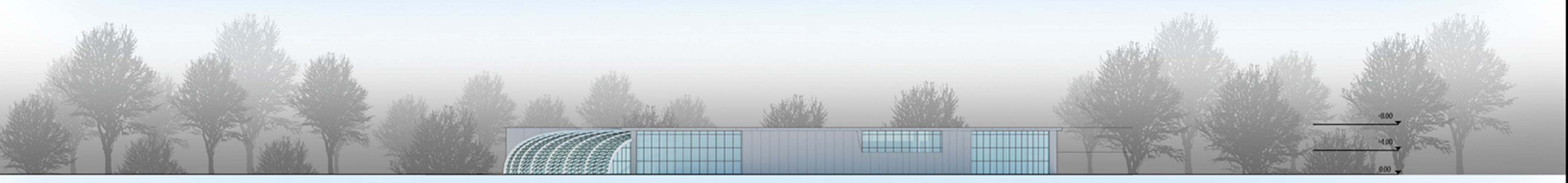
Thesis Abstract
Fundamental act of architecture is defined space by separating one space from another and basically require of this act is creating differentiation of inside and outside. In beginning of time, architecture had this tendency to enhance shelter and habitation by inside and give over movement and utilization of natural environment to outside, but inside and outside don't exist without each other. Design of inside and outside spaces and relation between them always has been one of necessities for definition and limitation of human living spaces.
This aim of master thesis is explore relation of inside and outside on city and botanical garden, and focus on integrated daylight design Czech Flora conservatory for achieving this purpose concept of inside - outside in Prague botanical garden. climate condition of Prague and integrated daylight design system has been investigated, and by exploring case studies conservatories from worldwide and Czech Republic. Although daylight is a primary focus of this design assignment, the project shall also be developed as a public facility available to the residents of Prague and the Czech Republic. The conservatory shall support casual visits by the public as well as educational role in teaching the public, particularly children, about the role of plants in our living environment.



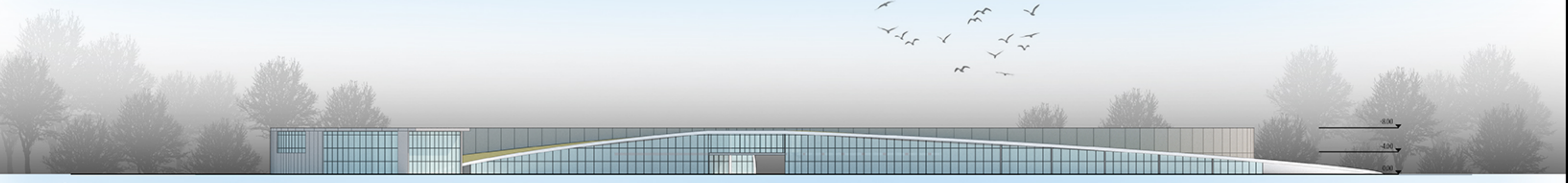
South Elevation



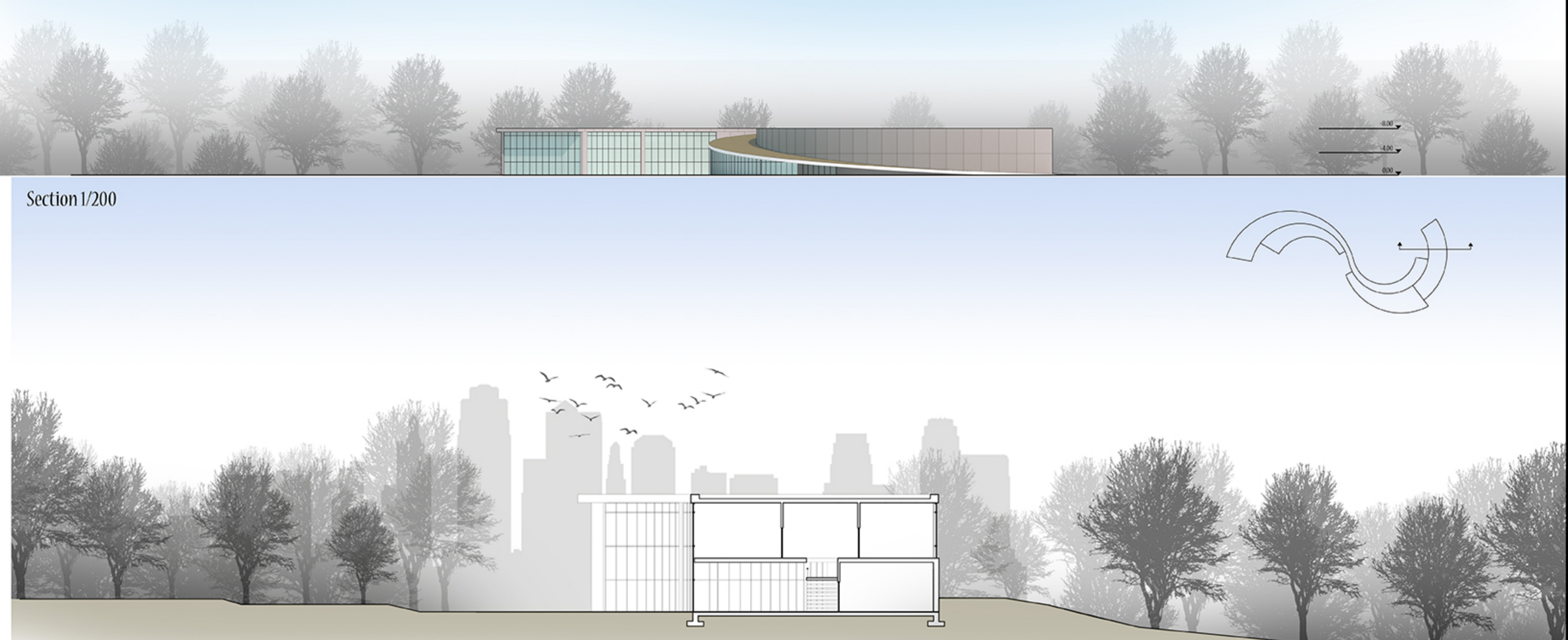
West Elevation



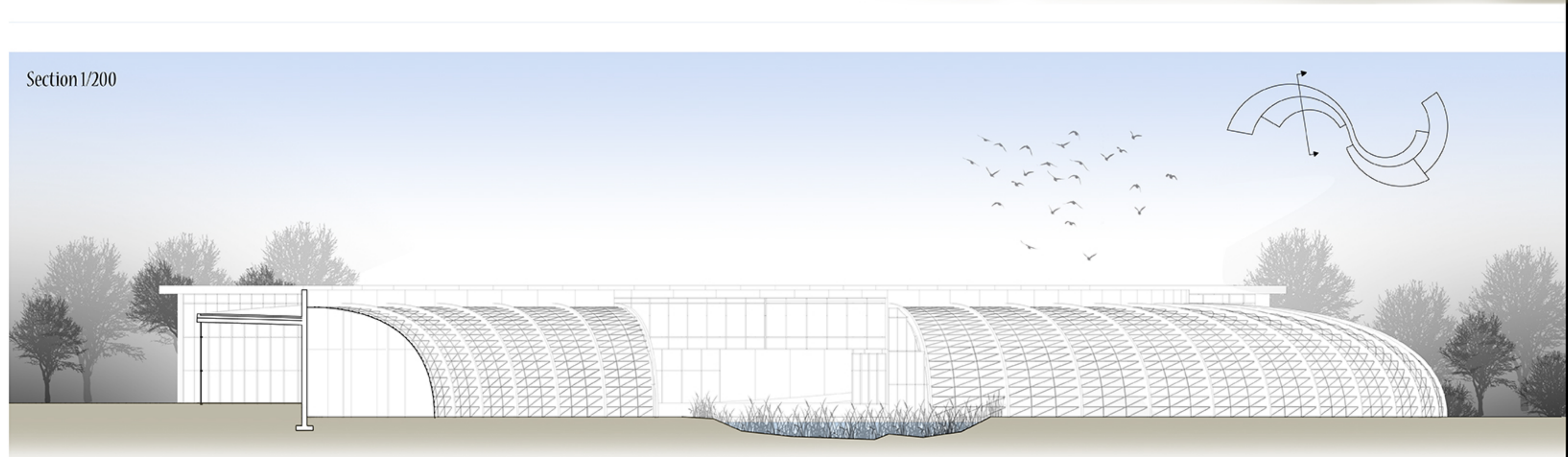
North Elevation



East Elevation



Section 1/200



Section 1/200