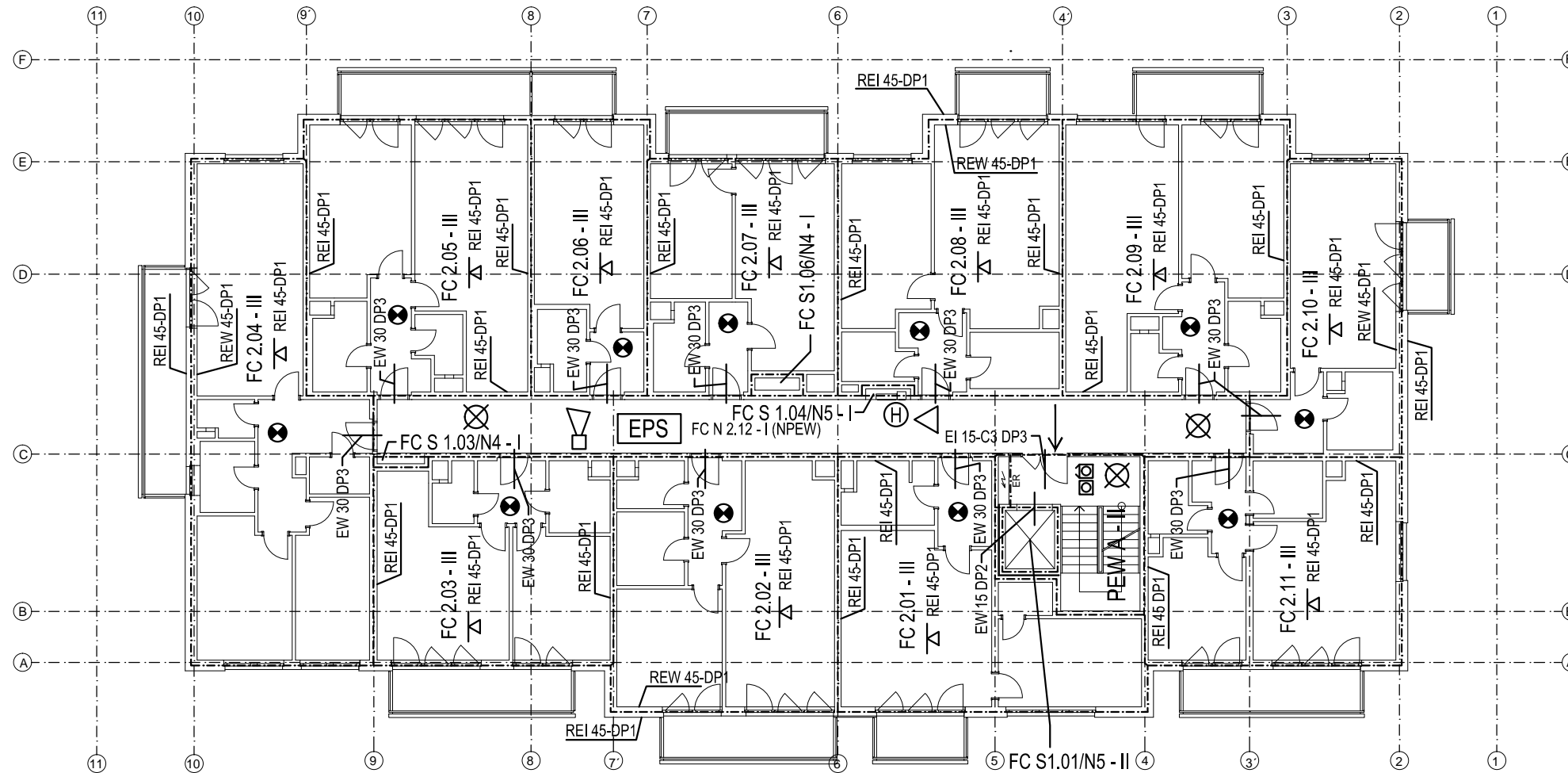


# 2.NP - 4.NP




FIRE HEIGHT OF BUILDING: 12,0 m

±0,000 = +262,450 BpV

## LEGEND

-----	Fire compartments border	⊙	Smoke protector
PEW A	Protected escape routes	△	Fire extinguisher
→	Escape direction	Ⓜ	Hydrant system
➔	Main escape point	△ REI 15-180 DP1-3	Ceiling fire resistance
⊠	Fire alarm button	EFS	Electric fire signaling
⊠	Fire ventilation button	📣	Siren
⊗	Emergency lighting		

OBJECT		<b>RESIDENTIAL BUILDING</b>		Czech Technical University 
PURPOSE	BACHELOR THESIS - RESIDENTIAL BUILDING			
CONSULTED WITH	Ing. Petr Hejtmanek, Ph.D.	date	05 / 2018	
CREATED BY	Malathe Alkhateeb	scale	1 : 200	
PART	FIRE DESIGN	Nr A4		
DRAWING	<b>Fire design 2NP-4NP</b>	Drawing nr.	<b>3.</b>	