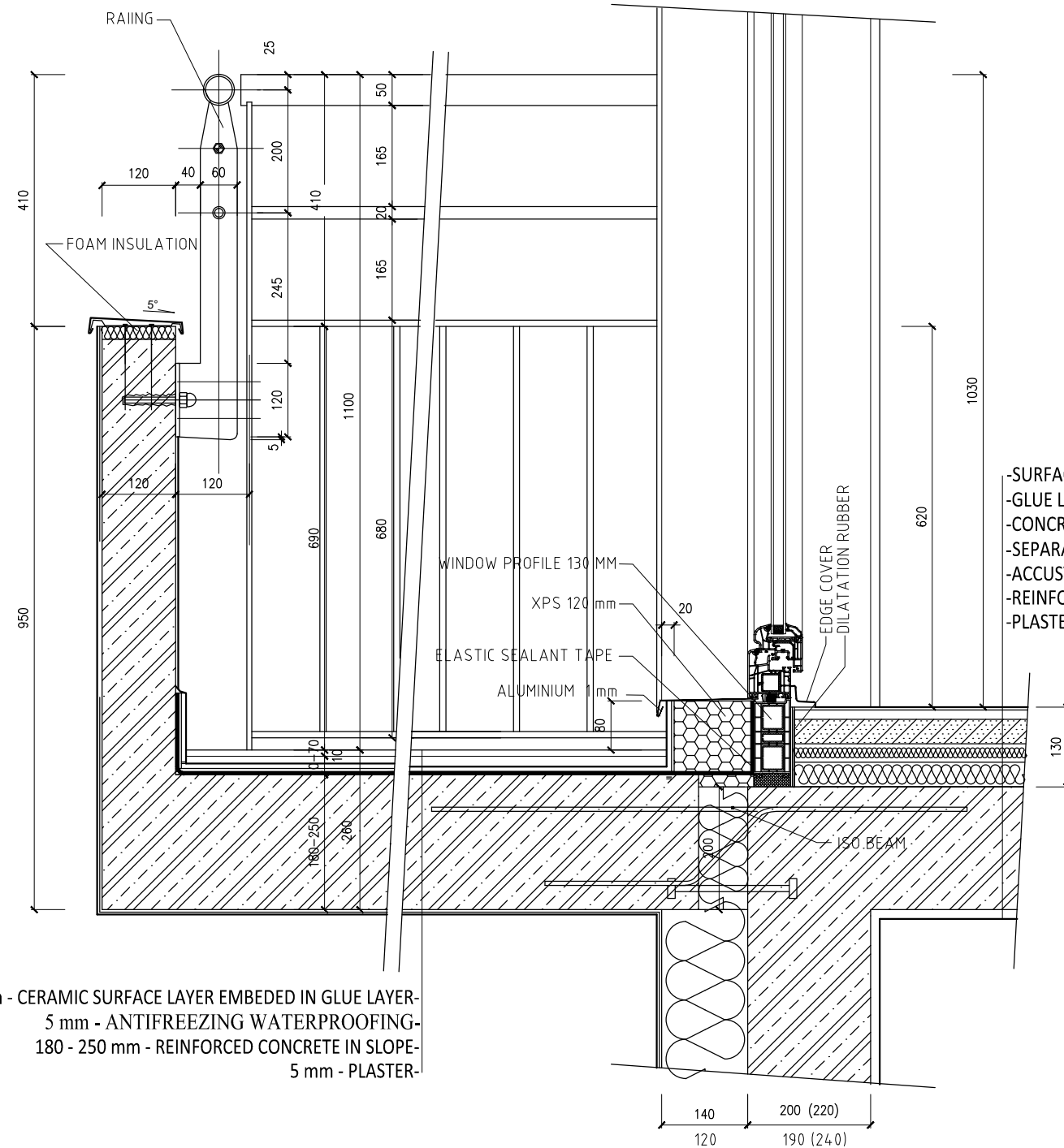
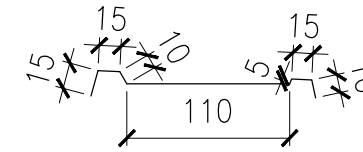


# DETAIL 3 - BALCONY - 2nd TILL 5th FLOOR




- SURFACE: CARPET/CERAMIC - 10 mm
- GLUE LAYER - 10 mm
- CONCRETE LEVELING LAYER - ANHYDRIT WITH FLOOR HEATING - 60 mm
- SEPARATION FOIL - 1 mm
- ACCUSTIC INSULATION - 70 mm
- REINFORCED CONCRETE SLAB - 170 mm
- PLASTER - 5 mm

30 mm - CERAMIC SURFACE LAYER EMBEDDED IN GLUE LAYER-  
 5 mm - ANTIFREEZING WATERPROOFING-  
 180 - 250 mm - REINFORCED CONCRETE IN SLOPE-  
 5 mm - PLASTER-



±0,000 = +262,450 BpV

OBJECT	FIRST FLOOR I	Czech Technical University 
	<b>RESIDENTIAL BUILDING</b>	
PURPOSE	BACHELOR THESIS - RESIDENTIAL BUILDING	
CONSULTED WITH	Ing. Malila Noori, Ph.D.	date 05 / 2018
CREATED BY	Malathe Alkhateeb	scale 1 : 50
PART	BUILDING STRUCTURE	Nr A4
DRAWING	<b>DETAIL 3</b>	Drawing nr. <b>12.</b>