

ČESKÉ VYSOKÉ UČENÍ TECHNICKÉ V PRAZE  
FAKULTA ARCHITEKTURY  
BAKALÁŘSKÁ PRÁCE  
2017/2018



STUDIE K BAKALÁŘSKÉ PRÁCI

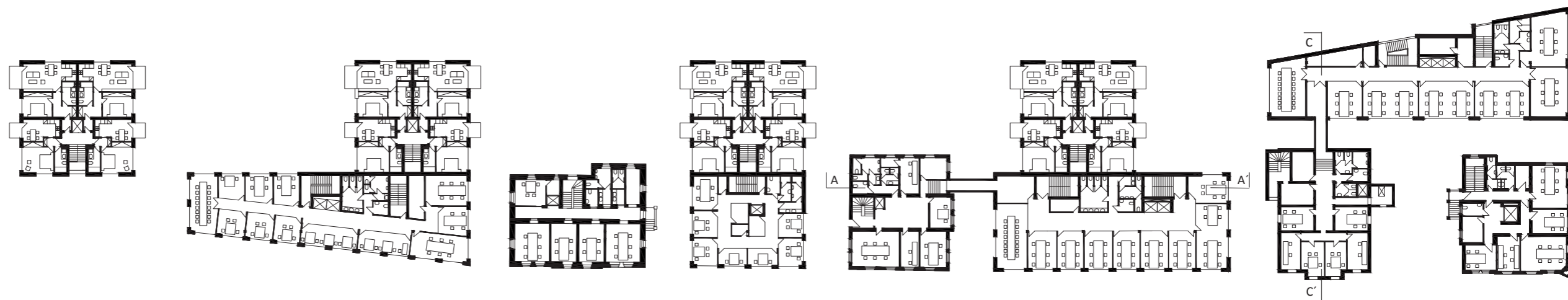




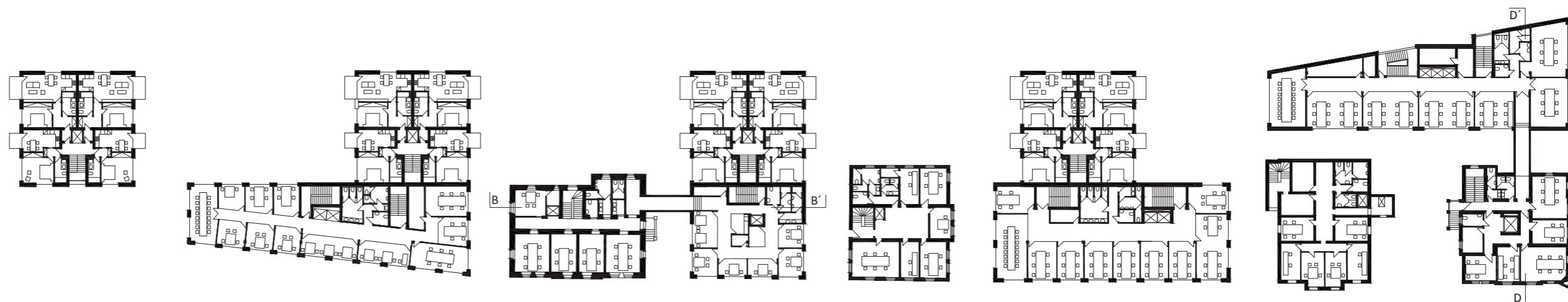
Pohled jižní z ulice Milady Horákové



3.NP



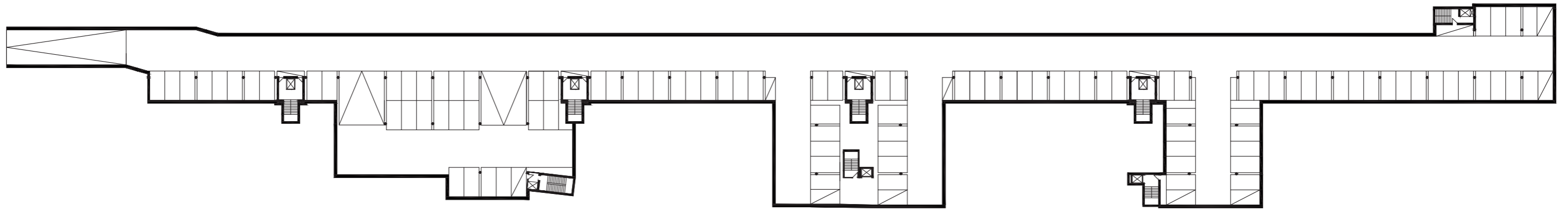
2.NP



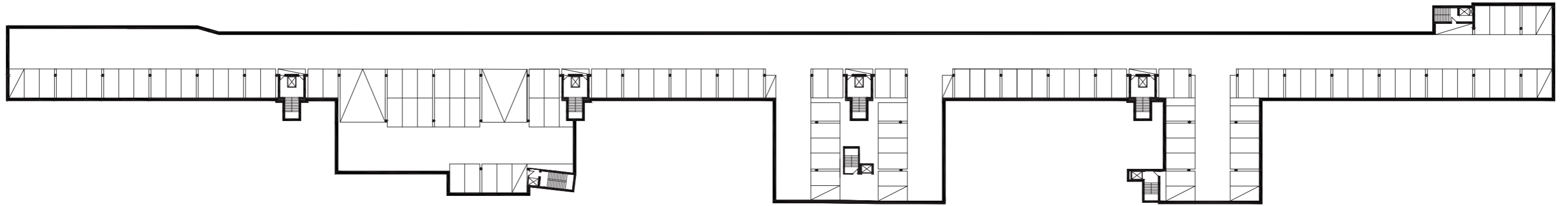
Parter (1.NP)



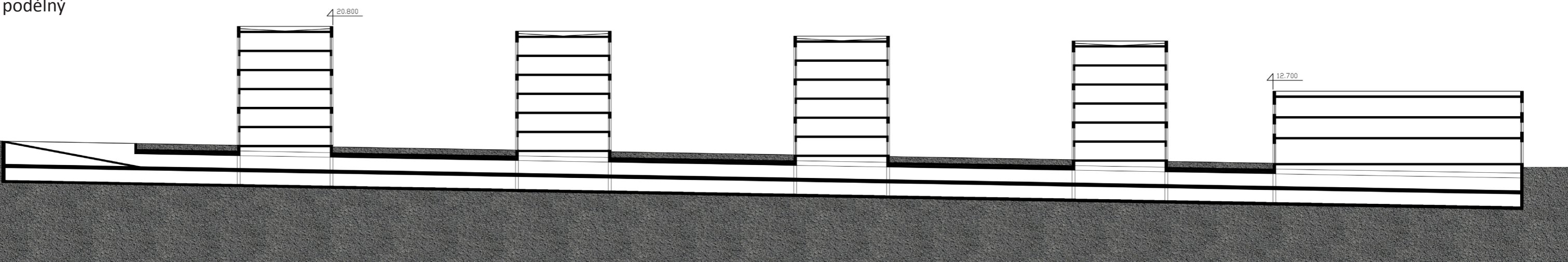
1.PP



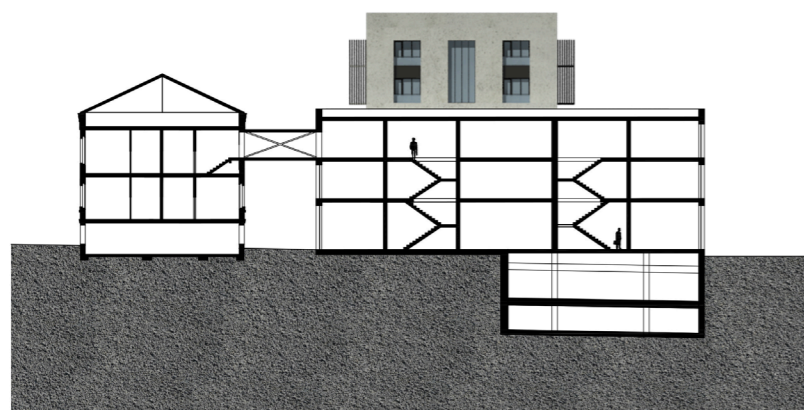
2.PP



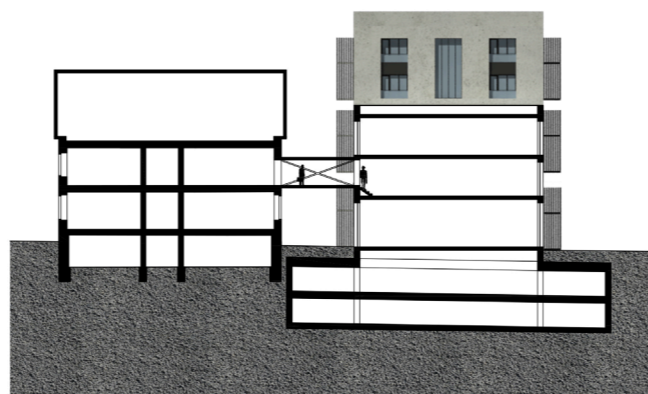
Řez podélný



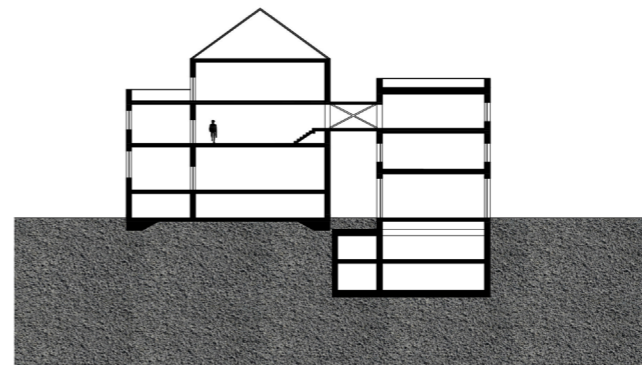
Řez C-C'



Řez B-B'



Řez C-C'



Řez D-D'

