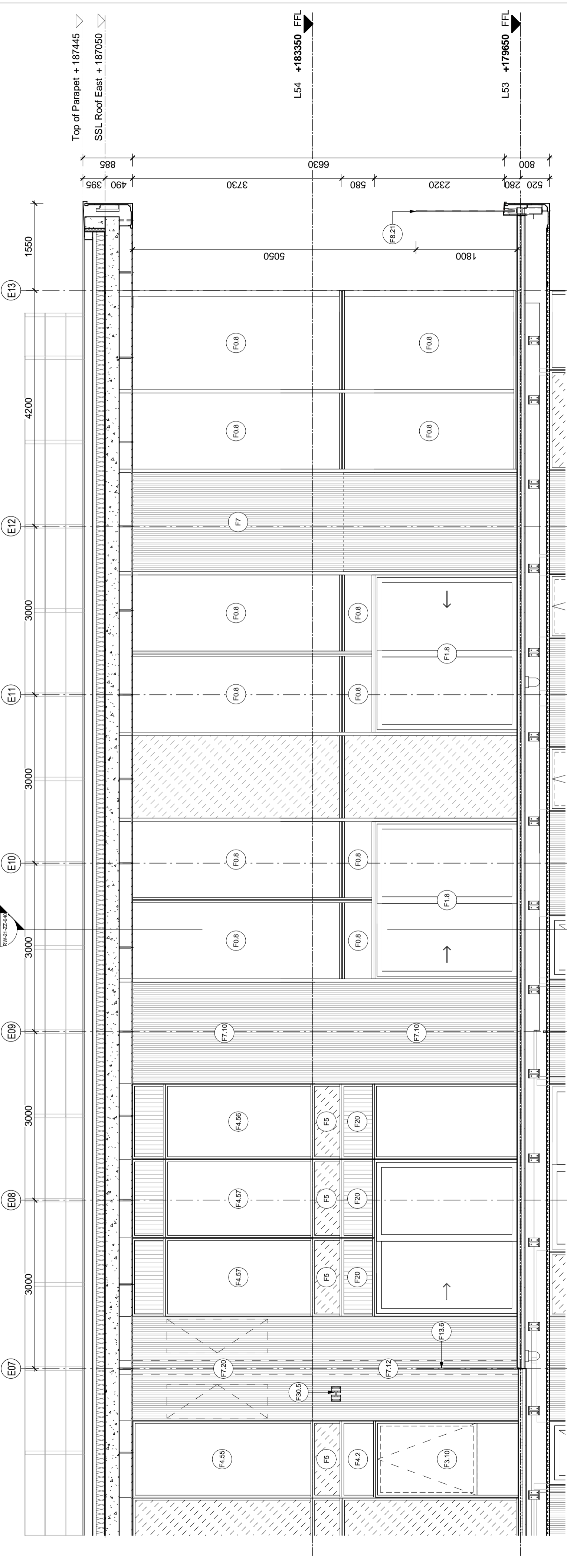
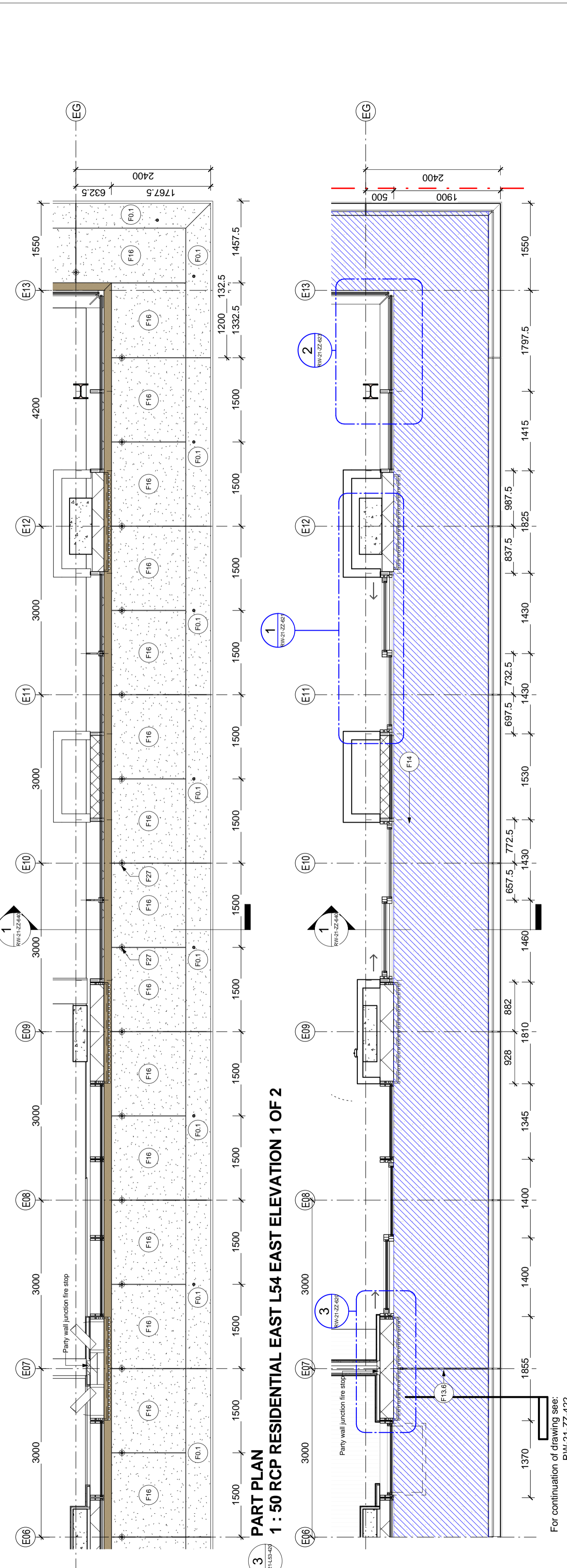


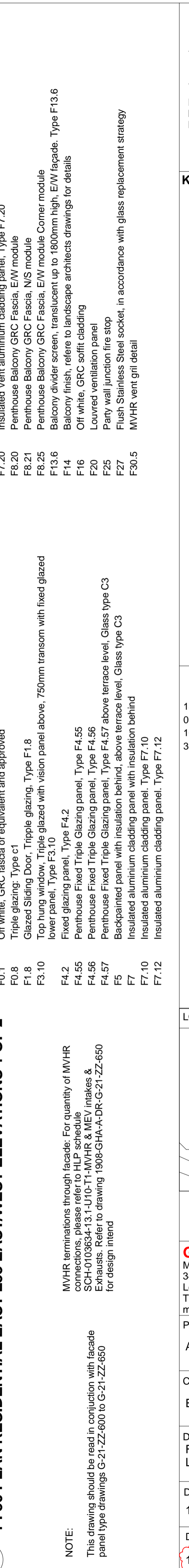
BALCONY ELEVATION
1 : 50 BALCONY RESIDENTIAL EAST L53-54 - EAST ELEVATION 1 OF 2



FACADE SECTION
1 : 50 FACADE GLAZING EAST TOWER - East Elevation L53-L54 1/2



PART PLAN
1 : 50 RCP RESIDENTIAL EAST L54 EAST ELEVATION 1 OF 2



PART PLAN
1 : 50 PLAN RESIDENTIAL EAST L53 EASTWEST ELEVATIONS 1 OF 2

- F7.20 Insulated Vent aluminium cladding panel, Type F7.20
- F8.20 Penthouse Balcony GRC Fascia, E/W module
- F8.21 Penthouse Balcony GRC Fascia, N/S module
- F8.25 Penthouse Balcony GRC Fascia, E/W module, Corner module
- F13.6 Balcony divider screen, translucent up to 1800mm high, E/W facade, Type F13.6
- F14 Balcony finish, refer to landscape architects drawings for details
- F16 Off white, GRC soffit cladding
- F20 Loured ventilation panel
- F25 Party wall junction fire stop
- F27 Flush Stainless Steel socket, in accordance with glass replacement strategy
- F30.5 MVHR vent grill detail

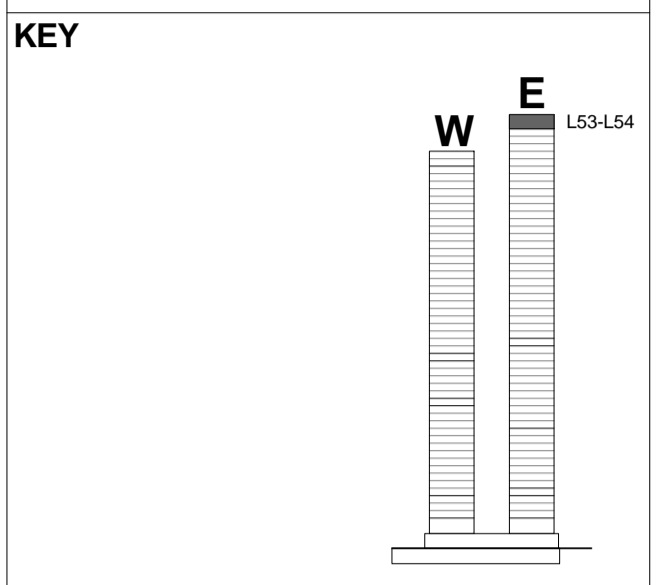
- F0.1 Off white, GRC fascia or equivalent and approved
- F0.8 Triple glazing, Type, ct
- F1.8 Glazed Sliding Door, Triple glazing, Type F1.8
- F3.10 Top hung window, Triple glazed with vision panel above, 750mm transom with fixed glazed lower panel, Type F3.10
- F4.2 Fixed glazing panel, Type F4.2
- F4.55 Penthouse Fixed Triple Glazing panel, Type F4.55
- F4.56 Penthouse Fixed Triple Glazing panel, Type F4.56
- F4.57 Penthouse Fixed Triple Glazing panel, Type F4.57 above terrace level, Glass type C3
- F5 Backpainted panel with insulation behind, above terrace level, Glass type C3
- F7 Insulated aluminium cladding panel, Type F7.10
- F7.12 Insulated aluminium cladding panel, Type F7.12

MVHR terminations through facade: For quantity of MVHR connections, please refer to HLP schedule SCH-0103634-13.1-U10-T1-MVHR & MEV intakes & Exhausts. Refer to drawing 1908-GHA-A-DR-G-21-ZZ-650 for design intent

This drawing should be read in conjunction with facade panel type drawings G-21-ZZ-600 to G-21-ZZ-650

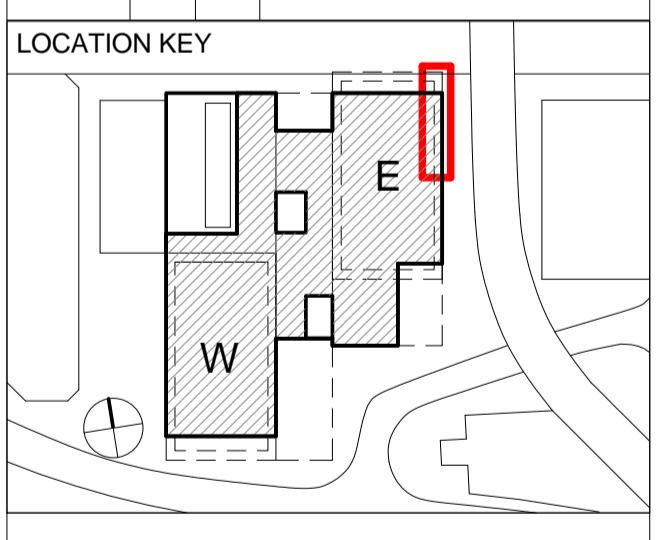
NOTES:
 DIMENSIONS NOT TO BE SCALED FROM THIS DRAWING. CONTRACTORS TO NOTIFY ARCHITECTS OF SITE VARIATIONS AFFECTING INFORMATION ON THIS DRAWING. THIS DRAWING IS COPYRIGHT OF GLENN HOWELLS ARCHITECTS

INFORMATION CONTAINED IN THIS DRAWING IS FOR STAGE E ONLY AND NOT FOR CONSTRUCTION.



Date	Rev	By	Details
18/12/15	1	JP	Issue for Stage E Preliminary
03/06/16	2	JP	Issued for Stage E
10/06/16	3	JP	Issued for Stage E
30/06/16	4	JP	Issued for Stage E

Drawing number amended:
 Superseded drawing number:
 1908-GHA-A-DR-RE-21-ZZ-421
 New drawing number:
 1908-GHA-A-DR-RE-21-L53-420



STAGE E

GLENN HOWELLS ARCHITECTS
 Middlesex House,
 34-42 Cleveland Street,
 London, W1T 4JE
 Tel: 020 7407 9915
 mail@glenhowells.co.uk

Project
 Arrowhead Quay (Wardian)

Client
 EBAQC

Drawing Title
 Façade bay study - Residential East - L53-L54 - East Elevation 1/2

Date	Scale @ A1	Drawn	Checked
18/12/15	1 : 50	RA	PM

Drawing No	Revision
1908-GHA-A-DR-RE-21-L53-420	4