

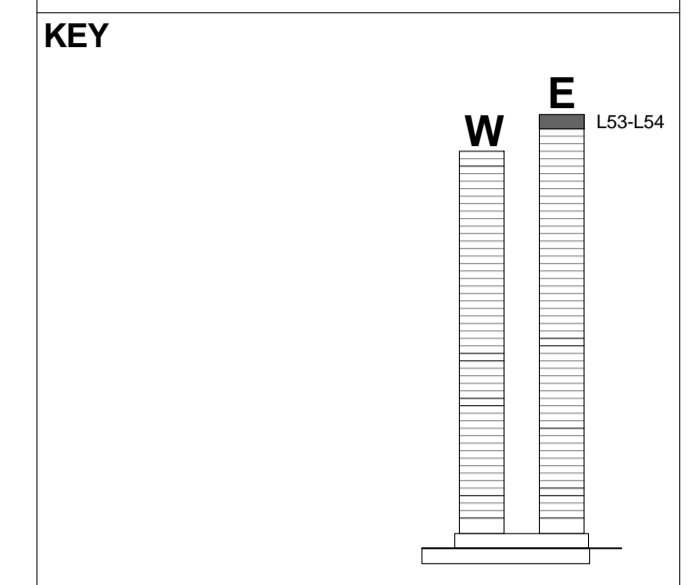
NOTE:  
This drawing should be read in conjunction with facade panel type drawings G-21-ZZ-600 to G-21-ZZ-903

MVHR terminations through facade: For quantity of MVHR through facade refer to drawing 1908-GHA-A-DR-G-21-ZZ-650 Exhausts. Refer to drawing 1908-GHA-A-DR-G-21-ZZ-650 for design intent

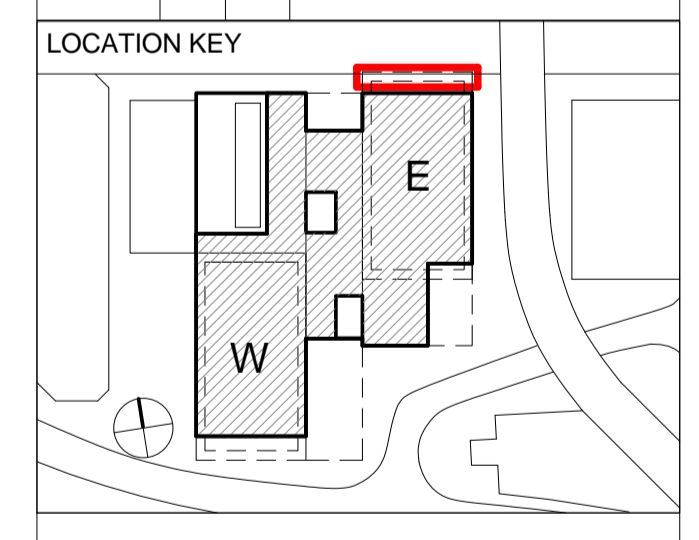
NOTE:  
F0.1 Off white, GRC fascia or equivalent and approved  
F0.8 Triple glazing: Type c1  
F1.8 Glazed Sliding Door, Triple glazing, Type F1.8  
F2.1 Penthouse Balcony GRC Fascia, N/S module  
F2.6 Penthouse Balcony GRC Fascia, N/S module Corner module  
F13.6 Balcony divider screen, translucent up to 1800mm high, EW/ facade, Type F13.6  
F16 Off white, GRC soffit cladding  
F27 Flush Stainless Steel socket, in accordance with glass replacement strategy

NOTES:  
DIMENSIONS NOT TO BE SCALED FROM THIS DRAWING. CONTRACTORS TO NOTIFY ARCHITECTS OF SITE VARIATIONS AFFECTING INFORMATION ON THIS DRAWING. THIS DRAWING IS COPYRIGHT OF GLENN HOWELLS ARCHITECTS

INFORMATION CONTAINED IN THIS DRAWING IS FOR STAGE E ONLY AND NOT FOR CONSTRUCTION.



Date	Rev	By	Details
18/12/15	1	JP	Issue for Stage E Preliminary
03/06/16	2	JP	Issued for Stage E
10/06/16	3	JP	Issued for Stage E
30/06/16	4	JP	Issued for Stage E Drawing number amended. Superseded drawing number: 1908-GHA-A-DR-RE-21-ZZ-423 New drawing number: 1908-GHA-A-DR-RE-21-L53-400



STAGE E

**GLENN HOWELLS ARCHITECTS**  
Middlesex House,  
34-42 Cleveland Street,  
London, W1T 4JE  
Tel: 020 7407 9915  
mail@glenhowells.co.uk

Project  
Arrowhead Quay (Wardian)

Client  
EBAQC

Drawing Title  
Façade bay study - Residential East - L53-L54 - North Elevation

Date	Scale @ A1	Drawn	Checked
18/12/15	1 : 50	RA	PM

Drawing No	Revision
1908-GHA-A-DR-RE-21-L53-400	4