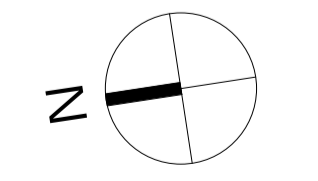


**2 L53 EAST TOWER**  
1:50



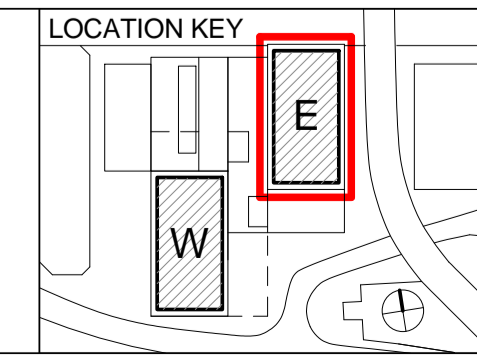
**STAGE E**

**NOTES:**  
DIMENSIONS NOT TO BE SCALED FROM THIS DRAWING. CONTRACTORS TO NOTIFY ARCHITECTS OF SITE VARIATIONS AFFECTING INFORMATION ON THIS DRAWING. THIS DRAWING IS COPYRIGHT OF GLENN HOWELLS ARCHITECTS.  
INFORMATION CONTAINED IN THIS DRAWING IS FOR STAGE E ONLY AND NOT FOR CONSTRUCTION.

Symbol	Description
	Emergency Voice Communication (EVC) Location
	Dimensions are to wall final finish. FFL include final finish on floor as per ID, for FFL on all other levels refer to GA section.
	1908-GHA-A-DR-G-23-ZZ-303 Refer to ID drawings and Room Data Sheets and schedule for dimensions of North and West balconies. Setting out dimensions to be finalized as part of the ID Stage E scope.
	Refer to 1908-GHA-A-DR-RE-21-L03-400 and 1908-GHA-A-DR-RE-21-L03-401 for dimensions of North and West balconies. RWP in facade panels shown indicatively. Refer to BDA facade panel detail design for final setting out of the pipes.
	East Tower
	Fridge Freezer
	Fire Lighting
	Home Office
	Level
	Rainwater pipe
	West Tower
	Washing Machine
	Utility Cupboard

Date	Rev	By	Description
18/12/15	1	MG	Issue for Stage E Preliminary
08/04/16	2	MG	Issued for Stage E
29/04/16	3	BS	Issued for Stage E
30/06/16	4	BS	Drawing number amended Previous number to be superseded: 1908-GHA-A-DR-RE-20-53-100 New drawing number: 1908-GHA-A-DR-RE-20-L53-100 Issued for Stage E

**REVISION NOTES:**  
 Drawing number amended  
 Home Office Zone shown



**GLENN HOWELLS ARCHITECTS**  
 Middlesex House,  
 34-42 Cleveland Street,  
 London, W1T 4JE  
 Tel: 020 7407 9915  
 mail@glennhowells.co.uk  
 Drawing Title  
 L53 Floor Plan East - Penthouse Level  
 Lower

Date	Scale	Drawn	Checked
18/12/15	@A1 1:50	BS	AM
Drawing No. 1908-GHA-A-DR-RE-20-L53-100		Revision 4	
Project Arrowhead Quay (Wardian)	Client EBAQC		