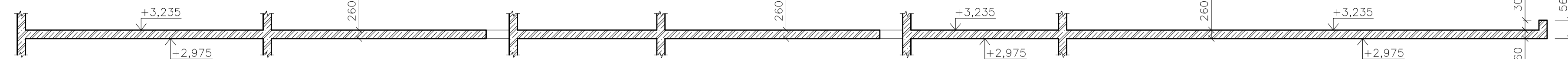
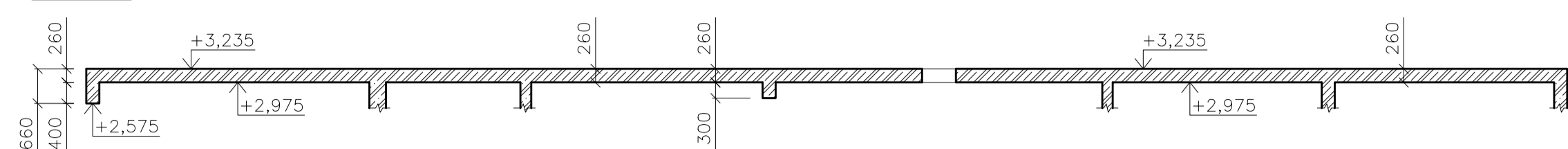


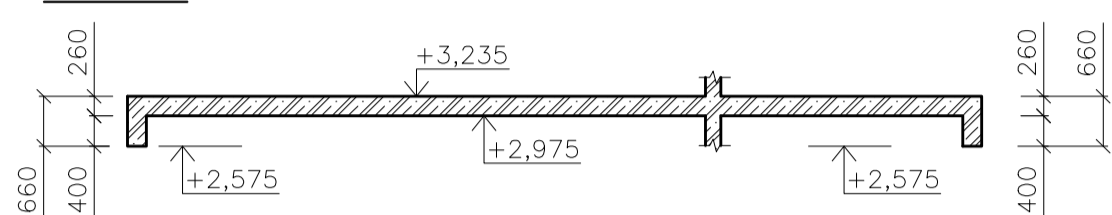
ŘEZ 1-1



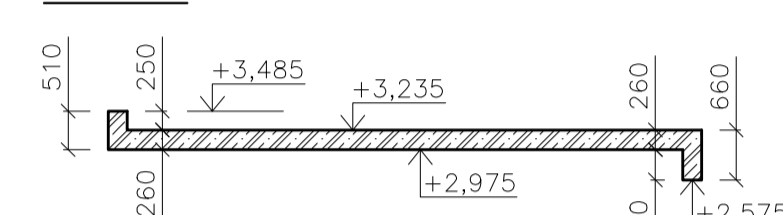
ŘEZ 6-6



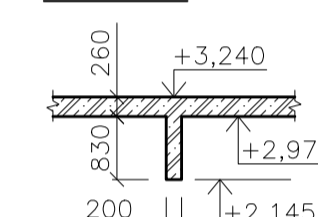
ŘEZ 2-2



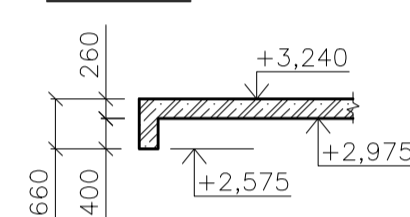
ŘEZ 3-3



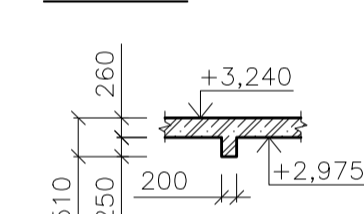
ŘEZ 4-4



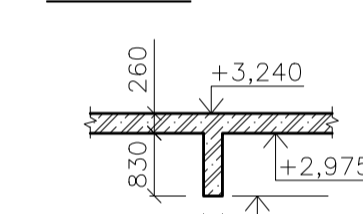
ŘEZ 5-5



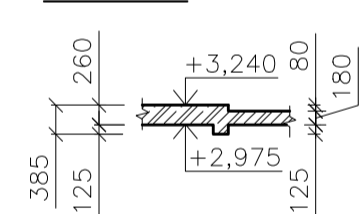
ŘEZ 7-7



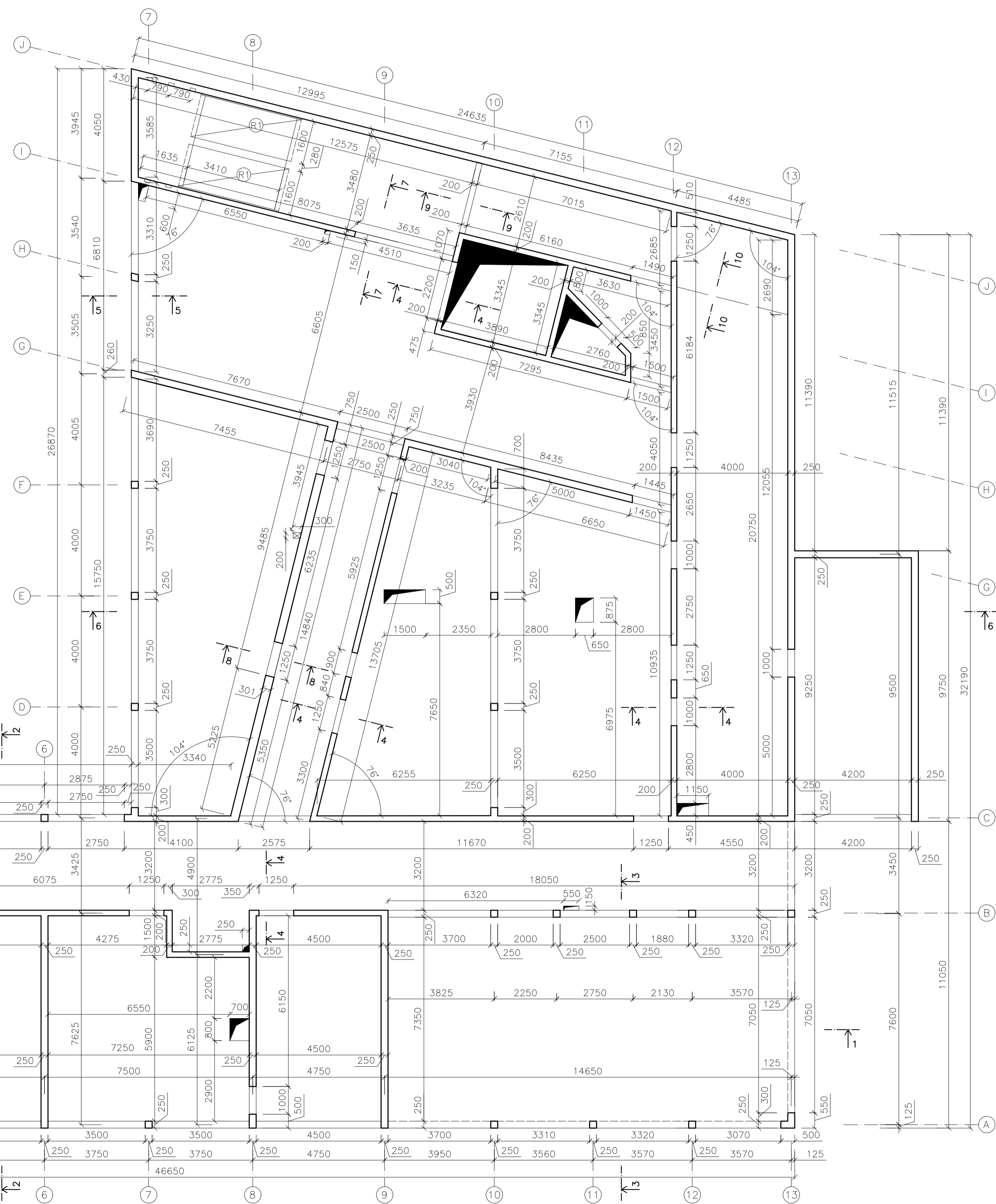
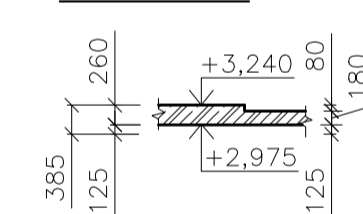
ŘEZ 8-8



ŘEZ 9-9

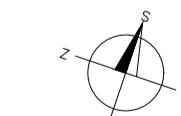


ŘEZ 10-10



- POZNÁMKY:
- HB - AKUSTICKÝ PRVEK HALFEN HBB-O
 - R1 - PREFABRIKOVANÉ RAMENO
 - VÝSEK SCHODIŠTĚVÉHO PROSTORU viz. VÝKRES č.4 (M1:25)
 - SCHODIŠTĚVÁ RAMENA BUDOU UKLÁDÁNA NA AKUSTICKÝ PRVEK HALFEN HTF-DS

BETON C30/37
 OCEL B500B
 KRYTÍ VÝZTUŽE c=25mm



DIPLOMOVÁ PRÁCE 124DPM		
VYPRACOVAL: Bc. MARTIN KABEŠ		
VEDOUCÍ PRÁCE Ing. LENKA HANZALOVÁ, Ph.D.		DATUM 15.11.2017 MĚŘÍTKO 1:100
KONZULTANT STATICKÉ ČÁSTI Ing. HANA HANZLOVÁ, CSc.		
TÉMA: DOMOV PRO SENIORY V PRAZE		VÝKRES č.1
SCHÉMA VÝKRESU TVARU NAD 1.PP		