

SEE DETAIL E
SEE SHEET 3

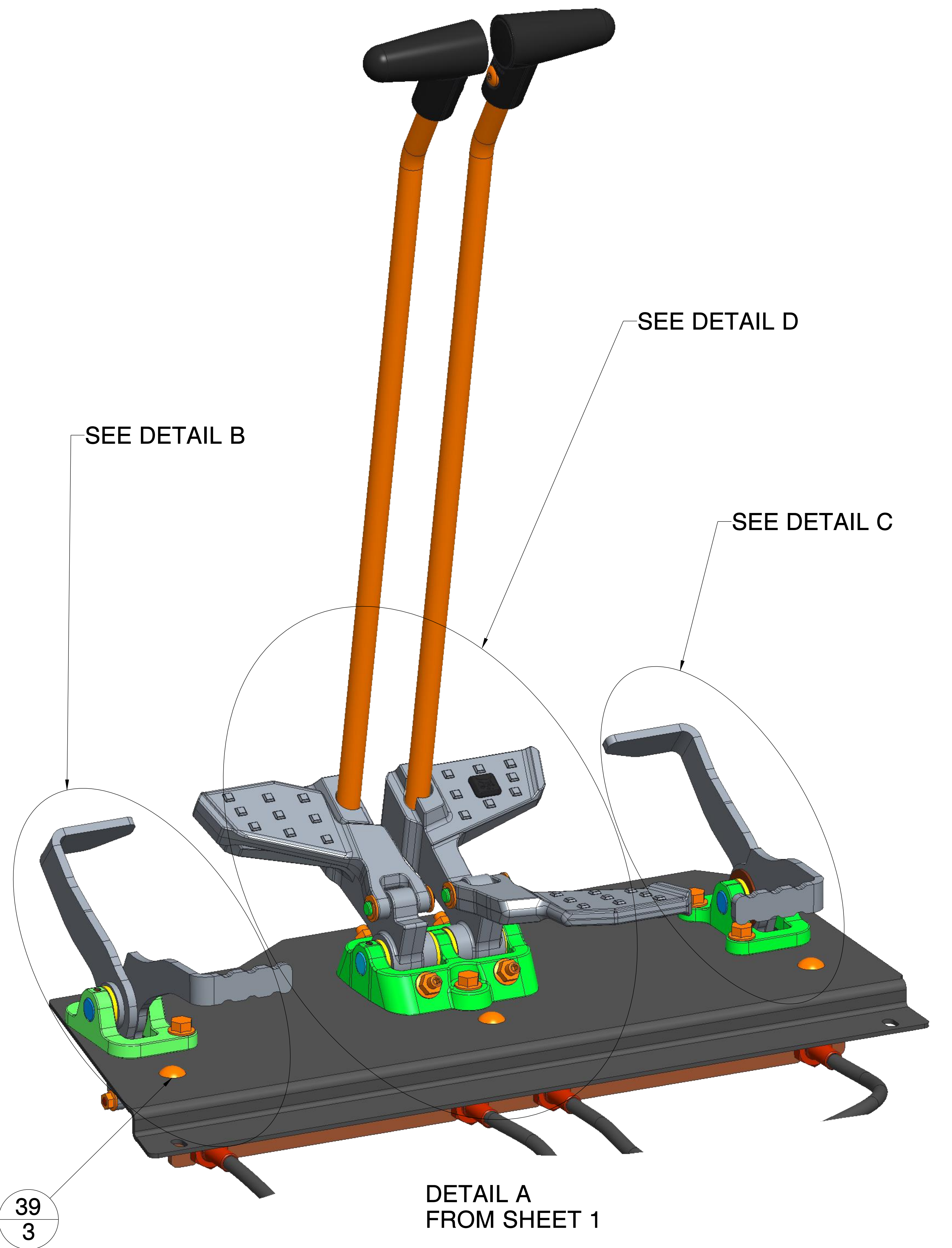
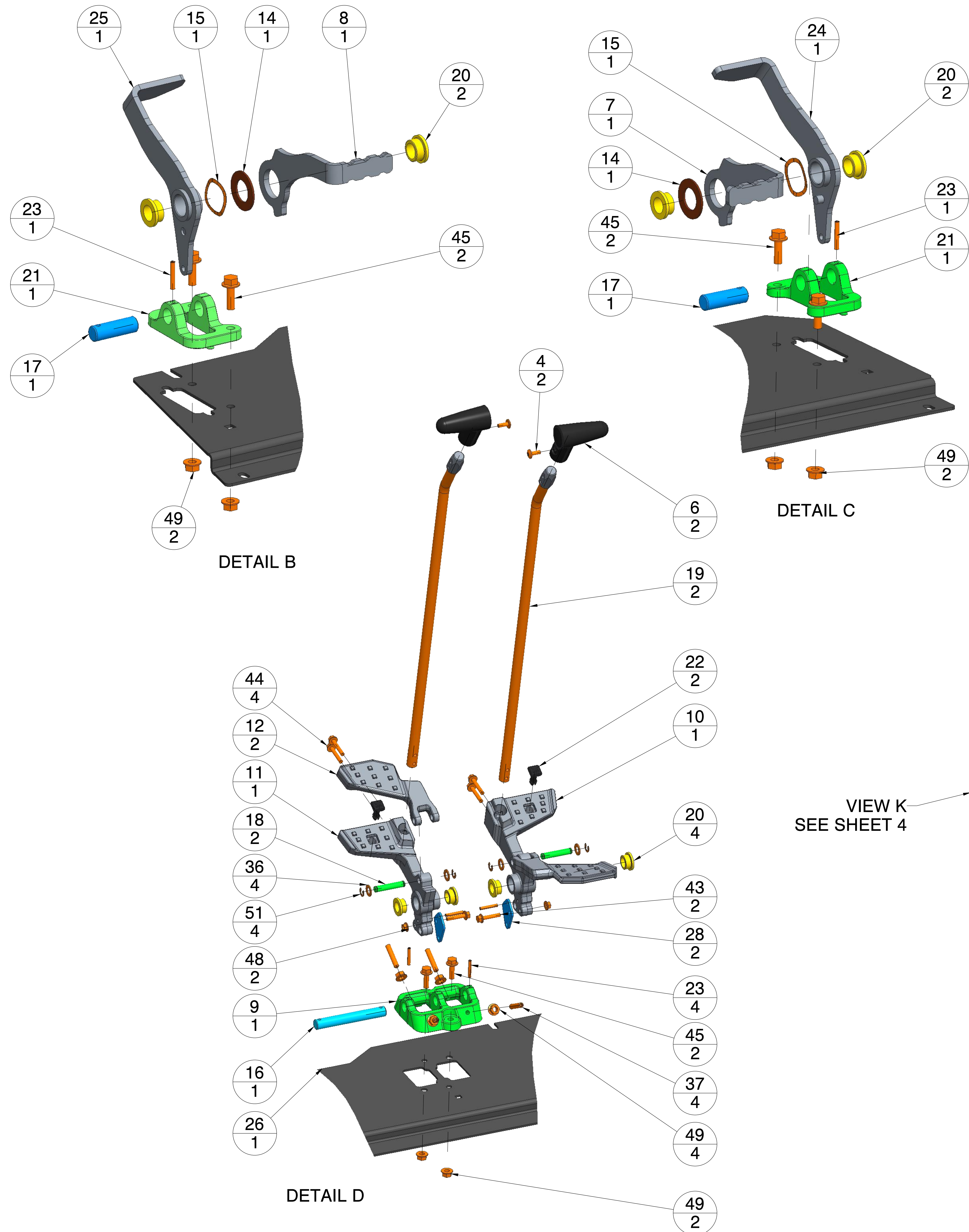
51	9JM70	SHAFT RETAINER	4
50	5JM22	RING EXTERNAL SNAP	8
49	43DM8	NUT HEX FLNG 10.0	21

48	43DM6	NUT HEX FLNG 10.0	14
47	38CM1020	BOLT SHOULDER	4
46	38CM1016	BOLT SHOULDER	2
45	29CM825	SCREW HEX HD W/F 8.8	8
44	29CM635	SCREW HEX HD W/F 8.8	4
43	29CM630	SCREW HEX HD W/F 8.8	2
42	29CM616	SCREW HEX HD W/F 8.8	4
41	29CM610	SCREW HEX HD W/F 8.8	1
40	28CM820	BOLT CARRIAGE 8.8	2
39	28CM816	BOLT CARRIAGE 8.8	3
38	1F212	PIN COTTER	4
37	15GM840	HEXAGON SOCKET SCREWS	4
36	15EM100	WASHER FLAT PLAIN SM	4
35	7286778	PLATE LOCK	1
34	7285488	CABLE AUX/OFFSET	2
33	7285486	CABLE TRAVEL	2
32	7285392	BELLCRANK MACH W/A	4
31	7284685	SHAFT CABLE W/A	1
30	7284682	HOLDER CABLE W/A	1
29	7284680	BRACKET TRAVEL CABLE	1
28	7284679	BRACKET	2
27	7282384	BUSHING	8
26	7282376	PLATE FLOOR FRONT	1
25	7278907	PEDAL AUX W/A	1
24	7278665	PEDAL OFFSET W/A	1
23	7274126	PIN STRAIGHT COILED	6
22	7243677	GROMMET PEDAL	2
21	7243673	MOUNT MACH SINGLE	2
20	7241974	BUSHING	8
19	7240978	LEVER W/A	2
18	7240977	PIN HINGE	2
17	7240976	PEDAL PIVOT	2
16	7240975	PIVOT TRAVEL	1
15	7234360	WASHER WAVY SPRING	2
14	7234359	WASHER	2
13	7234338	SPOOL LINK	4
12	7233978	PEDAL BACK MACH	2
11	7233976	PEDAL LH MACH	1
10	7233974	PEDAL RH MACH	1
9	7228829	MOUNT MACH DOUBLE	1
8	7217942	PEDAL AUX HEEL	1
7	7217941	PEDAL OFFSET HEEL	1
6	7163788	HANDLE ASSY	2
5	7136559	SOLENOID ASSY	1
4	6803202	SCREW TORX HEAD	2
3	6801068	PIN	4
2	6676169	NUT U M8-1.25	2
1	6675859	RETAINER BOLT	2

NOTES	ITEM	PART NO.	DESCRIPTION	QTY	
<p>WARNING</p> <p>THE EXPORT OR REEXPORT OF THIS DRAWING OR A PRODUCT PRODUCED BY THIS DRAWING IS SUBJECT TO U.S. EXPORT ADMINISTRATION REGULATIONS AND OTHER APPLICABLE GOVERNMENTAL RESTRICTIONS OR REGULATIONS.</p> <p>COPYRIGHT ©</p> <p>ORIGINALLY CREATED AND REVISED IN THE YEARS AS IDENTIFIED IN THE RELEASING ECN. BOBCAT COMPANY RESERVES ALL RIGHTS.</p> <p>PROPRIETARY NOTICE</p> <p>THIS DOCUMENT CONTAINS CONFIDENTIAL AND TRADE SECRET INFORMATION, IS THE PROPERTY OF BOBCAT COMPANY, AND IS GIVEN TO THE RECEIVER IN CONFIDENCE. THE RECEIVER, BY RECEPTION AND RETENTION OF THE DOCUMENT, ACCEPTS THE DOCUMENTS IN CONFIDENCE AND AGREES THAT, EXCEPT AS AUTHORIZED IN WRITING BY BOBCAT COMPANY, IT WILL (1) NOT USE THE DOCUMENT OR ANY COPY THEREOF OR THE CONFIDENTIAL OR TRADE SECRET INFORMATION THEREIN; (2) NOT COPY THE DOCUMENT; (3) NOT DISCLOSE TO OTHERS EITHER THE DOCUMENT OR THE CONFIDENTIAL OR TRADE SECRET INFORMATION THEREIN; AND (4) UPON COMPLETION OF THE NEED TO RETAIN THE DOCUMENT, OR UPON DEMAND, RETURN THE DOCUMENT, ALL COPIES THEREOF, AND ALL MATERIALS COPIED THEREFROM.</p>					
D		MM[INCH]		TOLERANCES:	
UNLESS OTHERWISE SPECIFIED MACHINED SURFACE MAX. ROUGHNESS 125 μin / 3.2 μm				UNLESS OTHERWISE SPECIFIED	
		<p>SEE BOBCAT STANDARD DE-L FOR SHEETMETAL BEND RADIUS TOLERANCE</p> <p>X [X.X] ± 3 [.1]</p> <p>X.X [X.XX] ± 1.0 [.04]</p> <p>X.XX [X.XXX] ± .25 [.010]</p> <p>ANGULAR ± 1°</p> <p>FILLETS & RADII ± 1.5 [.06]</p>		<p>Bobcat Company</p> <p>WEST FARGO, NORTH DAKOTA, USA</p>	
ECN	96556	TITLE			
MATL	SEE BOM	INSTL CONTROLS			
TREAT	.	DWG. NO.	7278662		
HARD	.	SHT 1/5			
S/A	2845.13 in ²	18355.66 cm ²	DWG. NO. 7278662		
WT	49.90 lb	22.636 kg	SHT 1/5		

1. TORQUE HARDWARE PER BCT STD DE-B, UNLESS OTHERWISE SPECIFIED.

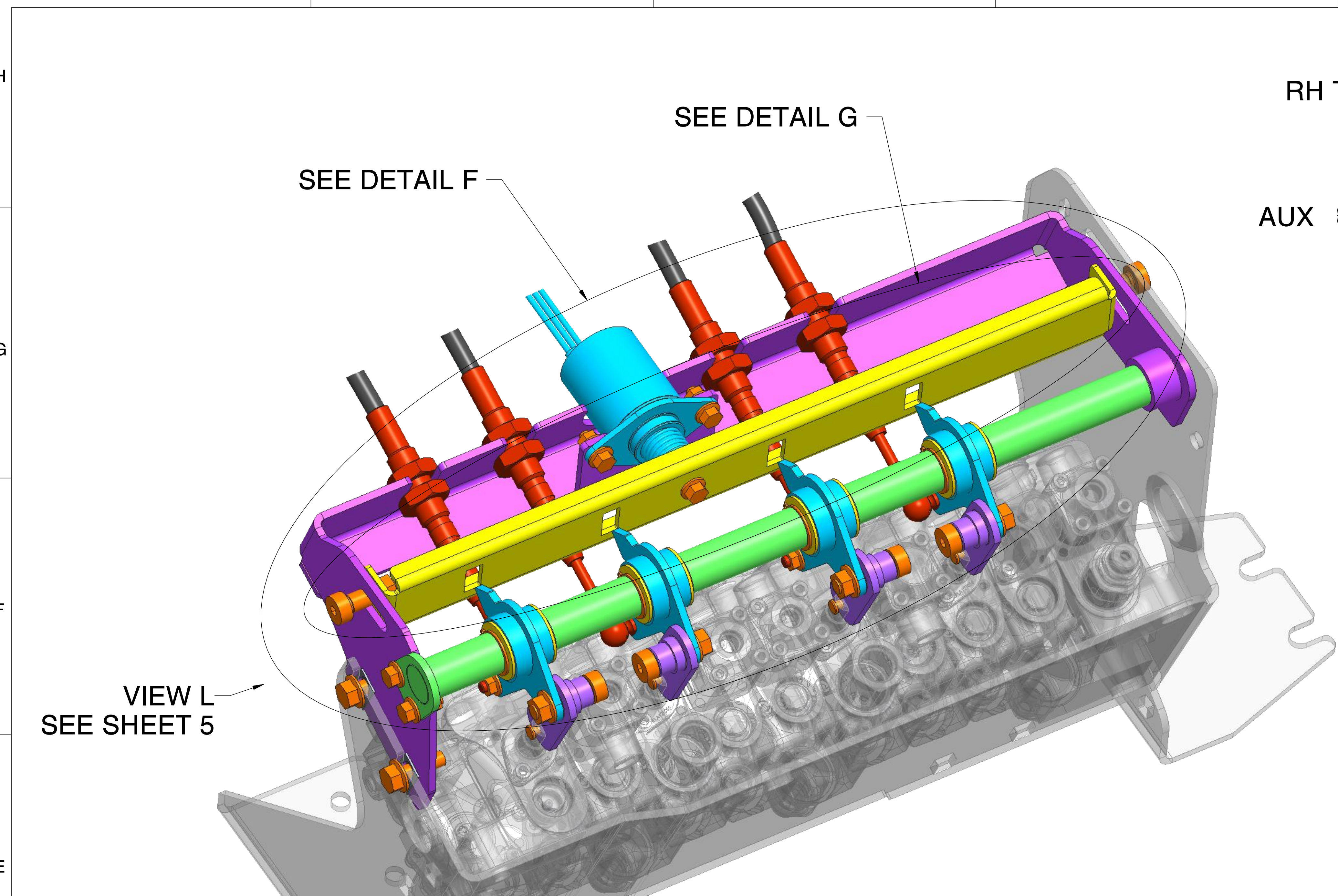
0		96556	LK	
REV	DESCRIPTION	CHG NOTICE	DWN	SHEET



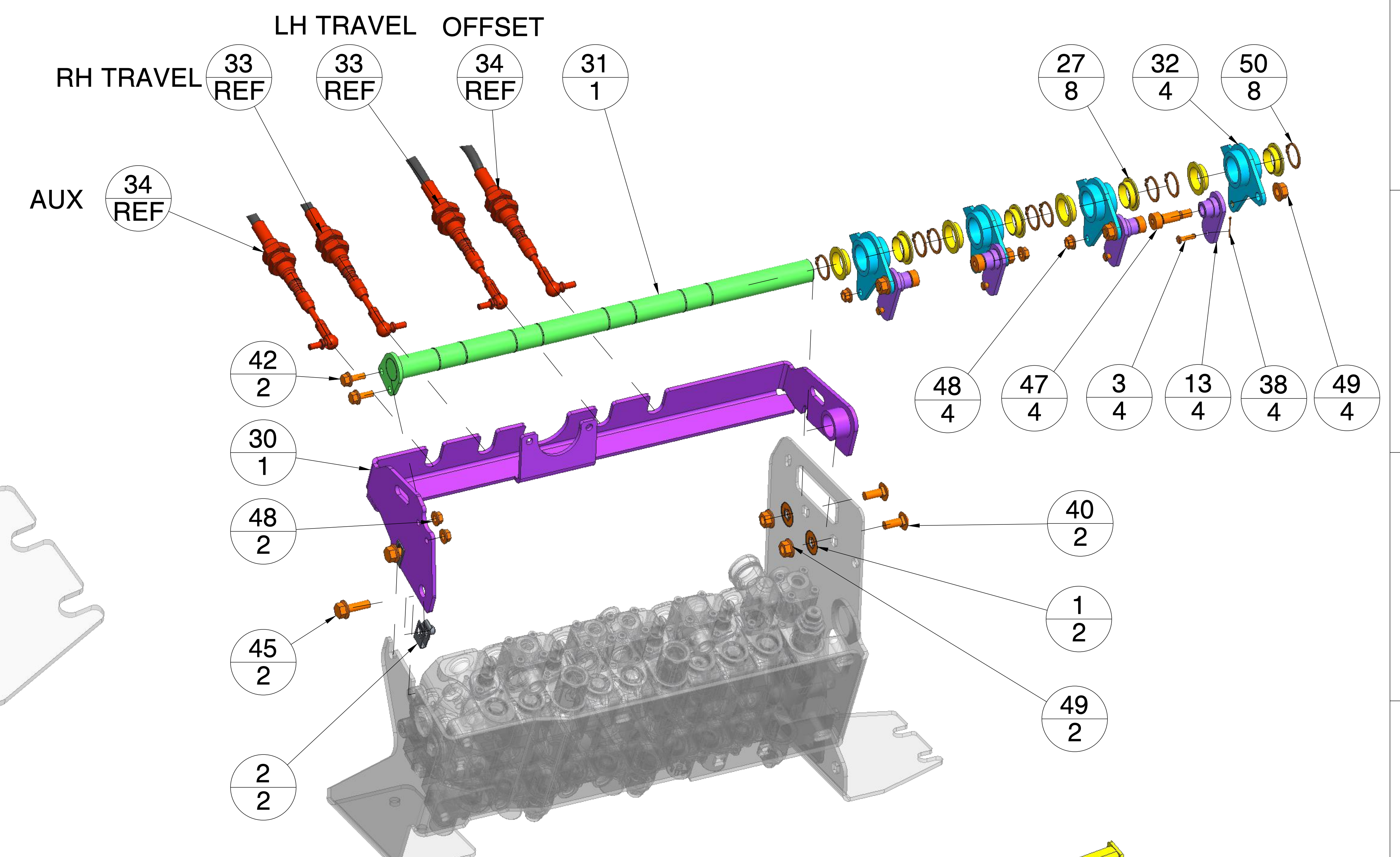
VIEW K
SEE SHEET 4

<p>WARNING</p> <p>THE EXPORT OR REEXPORT OF THIS DRAWING OR A PRODUCT PRODUCED BY THIS DRAWING IS SUBJECT TO U.S. EXPORT ADMINISTRATION REGULATIONS AND OTHER APPLICABLE GOVERNMENTAL RESTRICTIONS OR REGULATIONS.</p> <p>COPYRIGHT ©</p> <p>ORIGINALLY CREATED AND REVISED IN THE YEARS AS IDENTIFIED IN THE RELEASING ECN. BOBCAT COMPANY RESERVES ALL RIGHTS.</p> <p>PROPRIETARY NOTICE</p> <p>THIS DOCUMENT CONTAINS CONFIDENTIAL AND TRADE SECRET INFORMATION, IS THE PROPERTY OF BOBCAT COMPANY, AND IS GIVEN TO THE RECEIVER IN CONFIDENCE. THE RECEIVER, BY RECEPTION AND RETENTION OF THE DOCUMENT, ACCEPTS THE DOCUMENTS IN CONFIDENCE AND AGREES THAT, EXCEPT AS AUTHORIZED IN WRITING BY BOBCAT COMPANY, IT WILL (1) NOT USE THE DOCUMENT OR ANY COPY THEREOF OR THE CONFIDENTIAL OR TRADE SECRET INFORMATION THEREIN; (2) NOT COPY THE DOCUMENT; (3) NOT DISCLOSE TO OTHERS EITHER THE DOCUMENT OR THE CONFIDENTIAL OR TRADE SECRET INFORMATION THEREIN; AND (4) UPON COMPLETION OF THE NEED TO RETAIN THE DOCUMENT, OR UPON DEMAND, RETURN THE DOCUMENT, ALL COPIES THEREOF, AND ALL MATERIALS COPIED THEREFROM.</p>	D	MM[INCH]	<p>TOLERANCES:</p> <p>UNLESS OTHERWISE SPECIFIED</p> <p>SEE BOBCAT STANDARD DE-L FOR SHEETMETAL BEND RADIUS TOLERANCE</p> <p>X [X.X] ± 3 [.1]</p> <p>X.X [X.XX] ± 1.0 [.04]</p> <p>X.XX [X.XXX] ± .25 [.010]</p> <p>ANGULAR ± 1°</p> <p>FILLETS & RADII ± 1.5 [.06]</p> <p>Bobcat Company</p> <p>WEST FARGO, NORTH DAKOTA, USA</p> <p>TITLE</p> <p>INSTL CONTROLS</p>
	<p>UNLESS OTHERWISE SPECIFIED MACHINED SURFACE MAX. ROUGHNESS 125 μin / 3.2 μm</p> <p>THIRD ANGLE PROJECTION</p> <p>WELD SYMBOLS PER ANSI/AWS A2.4</p> <p>CHARACTERS OR <TEXT> PER BCT STD PR-AH</p>	<p>ECN 96556</p> <p>MATL SEE BOM</p> <p>TREAT .</p> <p>HARD .</p> <p>S/A 2845.13 in² 18355.66 cm²</p> <p>WT 49.90 lb 22.636 kg</p>	

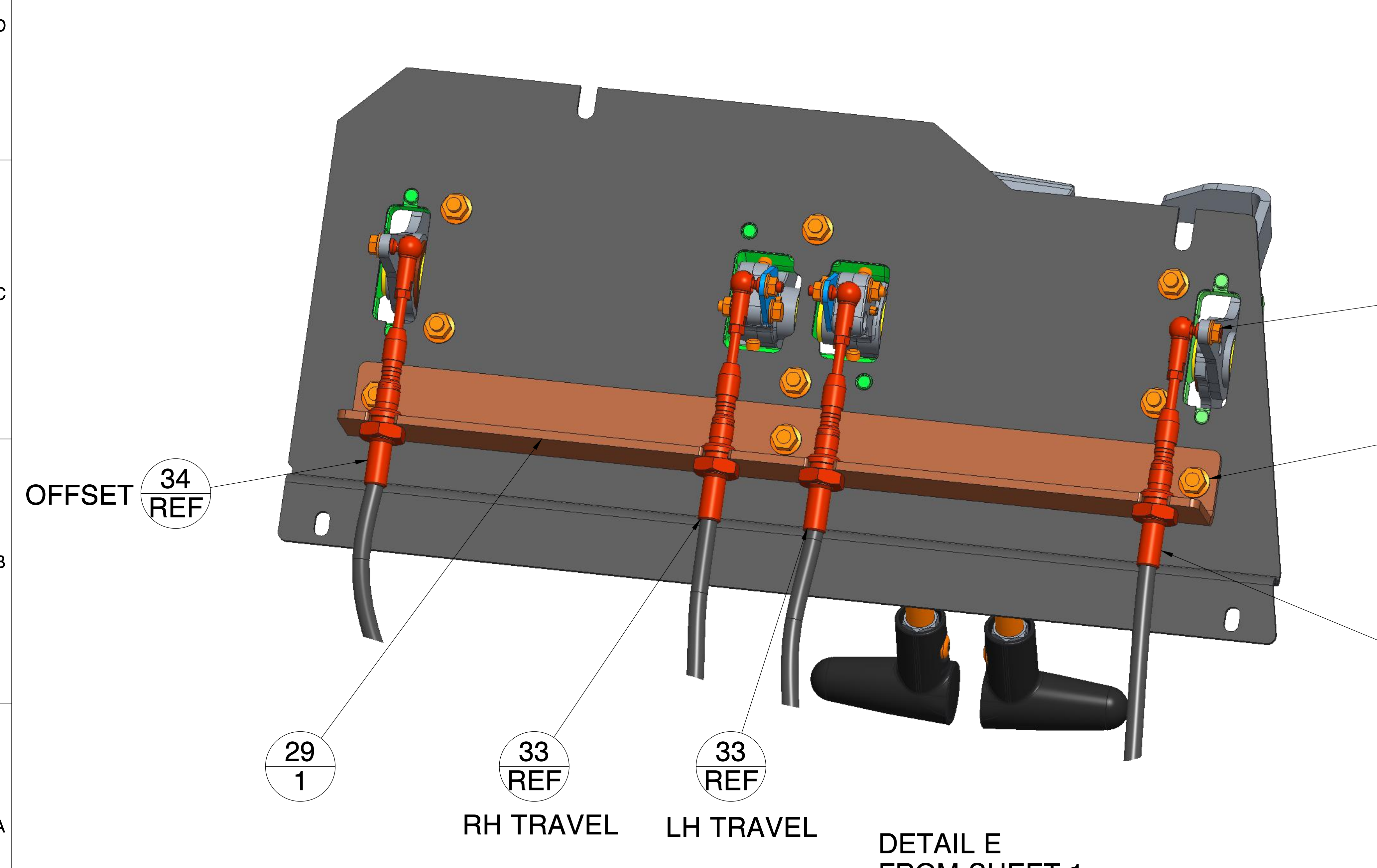
0	SEE SHEET 1	96556	LK	
REV	DESCRIPTION	CHG NOTICE	DWN	SHEET



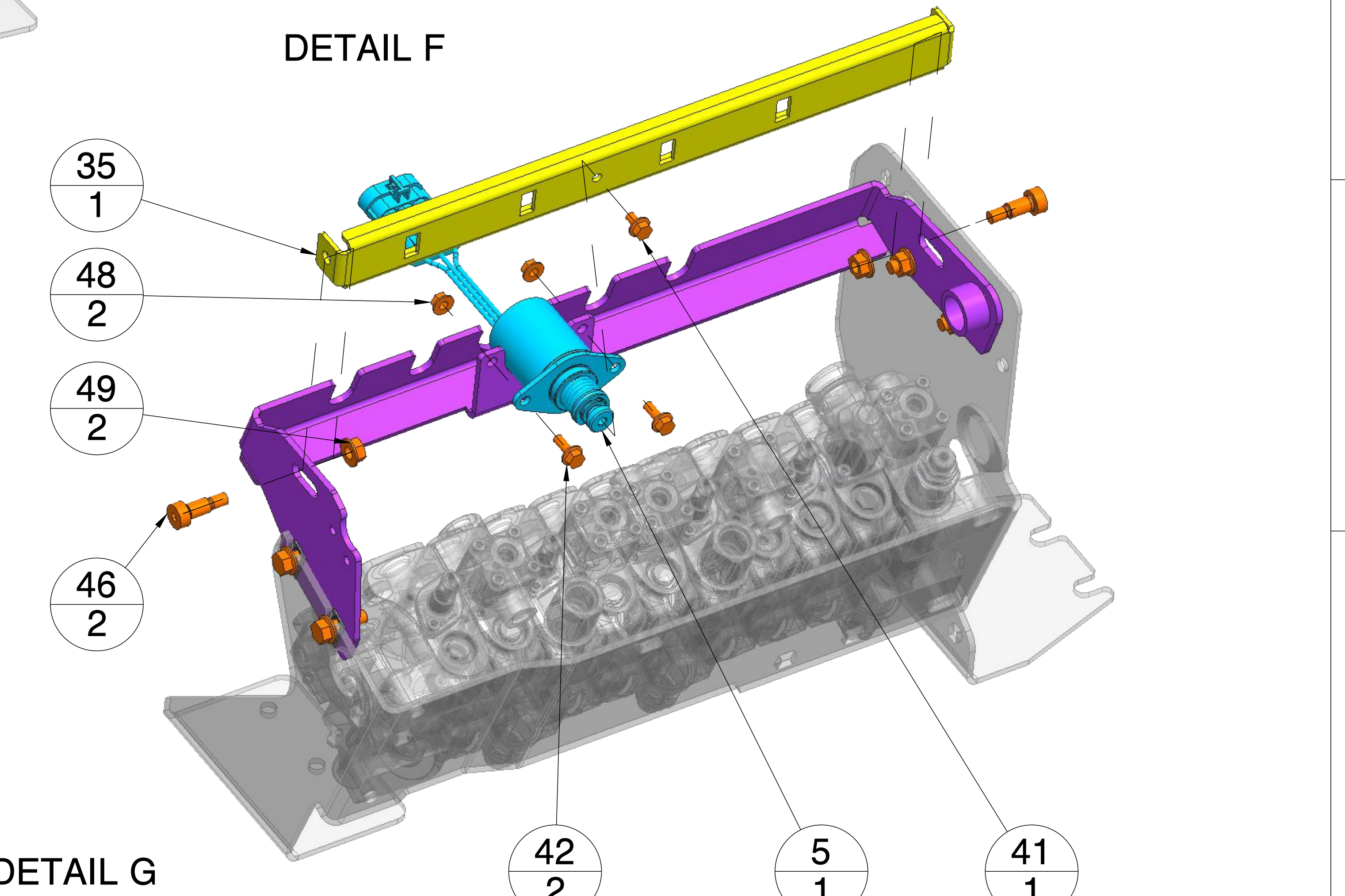
DETAIL H FROM SHEET 1



DETAIL F



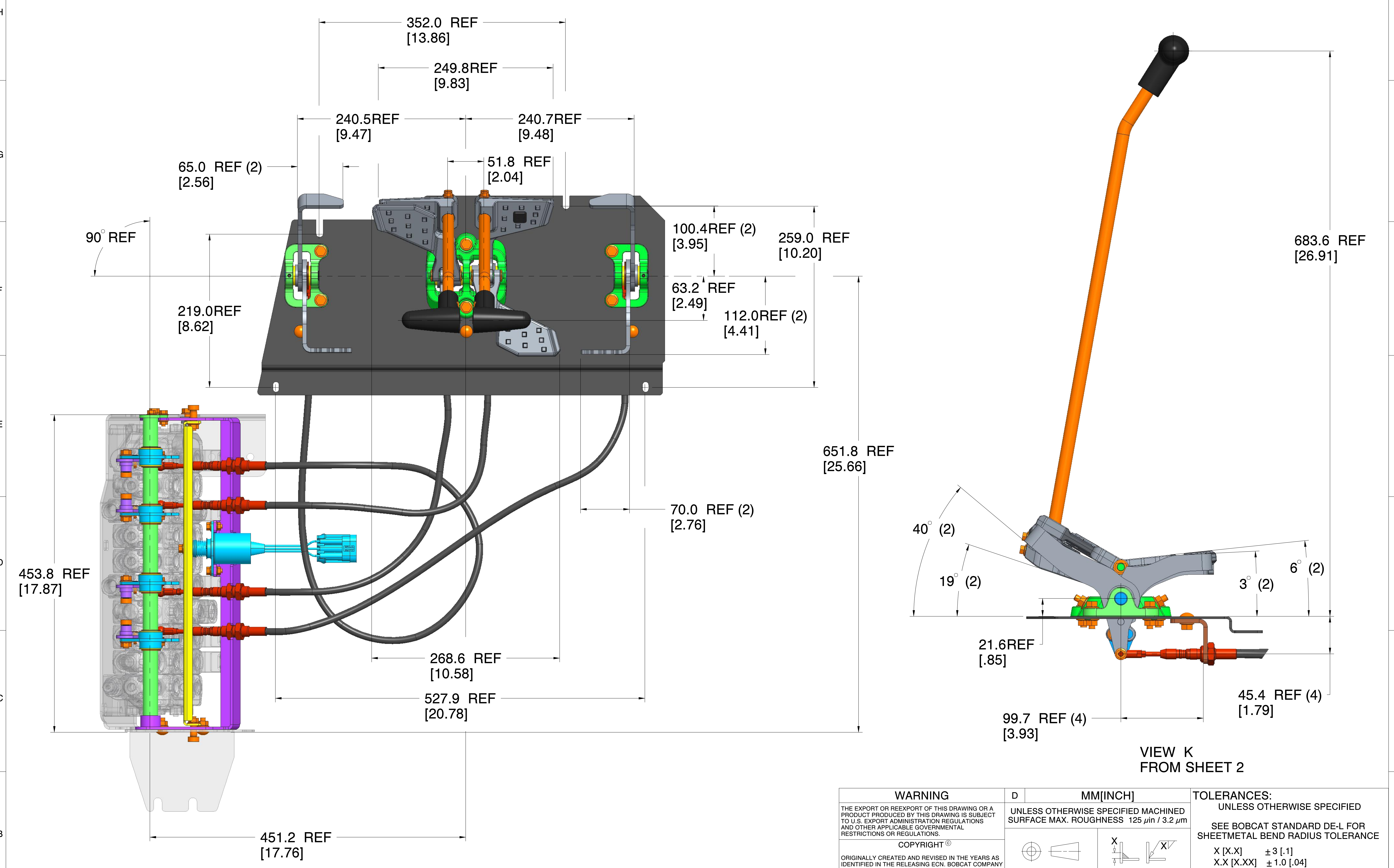
DETAIL E FROM SHEET 1



DETAIL G

<p>WARNING</p> <p>THE EXPORT OR REEXPORT OF THIS DRAWING OR A PRODUCT PRODUCED BY THIS DRAWING IS SUBJECT TO U.S. EXPORT ADMINISTRATION REGULATIONS AND OTHER APPLICABLE GOVERNMENTAL RESTRICTIONS OR REGULATIONS.</p> <p>COPYRIGHT ©</p> <p>ORIGINALLY CREATED AND REVISED IN THE YEARS AS IDENTIFIED IN THE RELEASING ECN. BOBCAT COMPANY RESERVES ALL RIGHTS.</p> <p>PROPRIETARY NOTICE</p> <p>THIS DOCUMENT CONTAINS CONFIDENTIAL AND TRADE SECRET INFORMATION, IS THE PROPERTY OF BOBCAT COMPANY, AND IS GIVEN TO THE RECEIVER IN CONFIDENCE. THE RECEIVER, BY RECEPTION AND RETENTION OF THE DOCUMENT, ACCEPTS THE DOCUMENTS IN CONFIDENCE AND AGREES THAT, EXCEPT AS AUTHORIZED IN WRITING BY BOBCAT COMPANY, IT WILL (1) NOT USE THE DOCUMENT OR ANY COPY THEREOF OR THE CONFIDENTIAL OR TRADE SECRET INFORMATION THEREIN; (2) NOT COPY THE DOCUMENT; (3) NOT DISCLOSE TO OTHERS EITHER THE DOCUMENT OR THE CONFIDENTIAL OR TRADE SECRET INFORMATION THEREIN; AND (4) UPON COMPLETION OF THE NEED TO RETAIN THE DOCUMENT, OR UPON DEMAND, RETURN THE DOCUMENT, ALL COPIES THEREOF, AND ALL MATERIALS COPIED THEREFROM.</p>	<p>D</p> <p>UNLESS OTHERWISE SPECIFIED MACHINED SURFACE MAX. ROUGHNESS 125 μin / 3.2 μm</p>	<p>TOLERANCES:</p> <p>UNLESS OTHERWISE SPECIFIED</p> <p>SEE BOBCAT STANDARD DE-L FOR SHEETMETAL BEND RADIUS TOLERANCE</p> <p>X [X.X] ± 3 [.1]</p> <p>X.X [X.XX] ± 1.0 [.04]</p> <p>X.XX [X.XXX] ± .25 [.010]</p> <p>ANGULAR ± 1°</p> <p>FILLETS & RADII ± 1.5 [.06]</p>
	<p>THIRD ANGLE PROJECTION</p> <p>WELD SYMBOLS PER ANSI/AWS A2.4</p>	<p>CHARACTERS) OR <TEXT> PER BCT STD PR-AH</p>
<p>ECN 96556</p> <p>MATL SEE BOM</p> <p>TREAT .</p> <p>HARD .</p> <p>S/A 2845.13 in² 18355.66 cm²</p> <p>WT 49.90 lb 22.636 kg</p>	<p>ECN 96556</p> <p>MATL SEE BOM</p> <p>TREAT .</p> <p>HARD .</p> <p>S/A 2845.13 in² 18355.66 cm²</p> <p>WT 49.90 lb 22.636 kg</p>	<p>Bobcat Company</p> <p>WEST FARGO, NORTH DAKOTA, USA</p> <p>TITLE</p> <p>INSTL CONTROLS</p> <p>DWG. NO. 7278662</p> <p>SHT 3/5</p>

0	SEE SHEET 1	96556	LK
REV	DESCRIPTION	CHG NOTICE	DWN SHEET

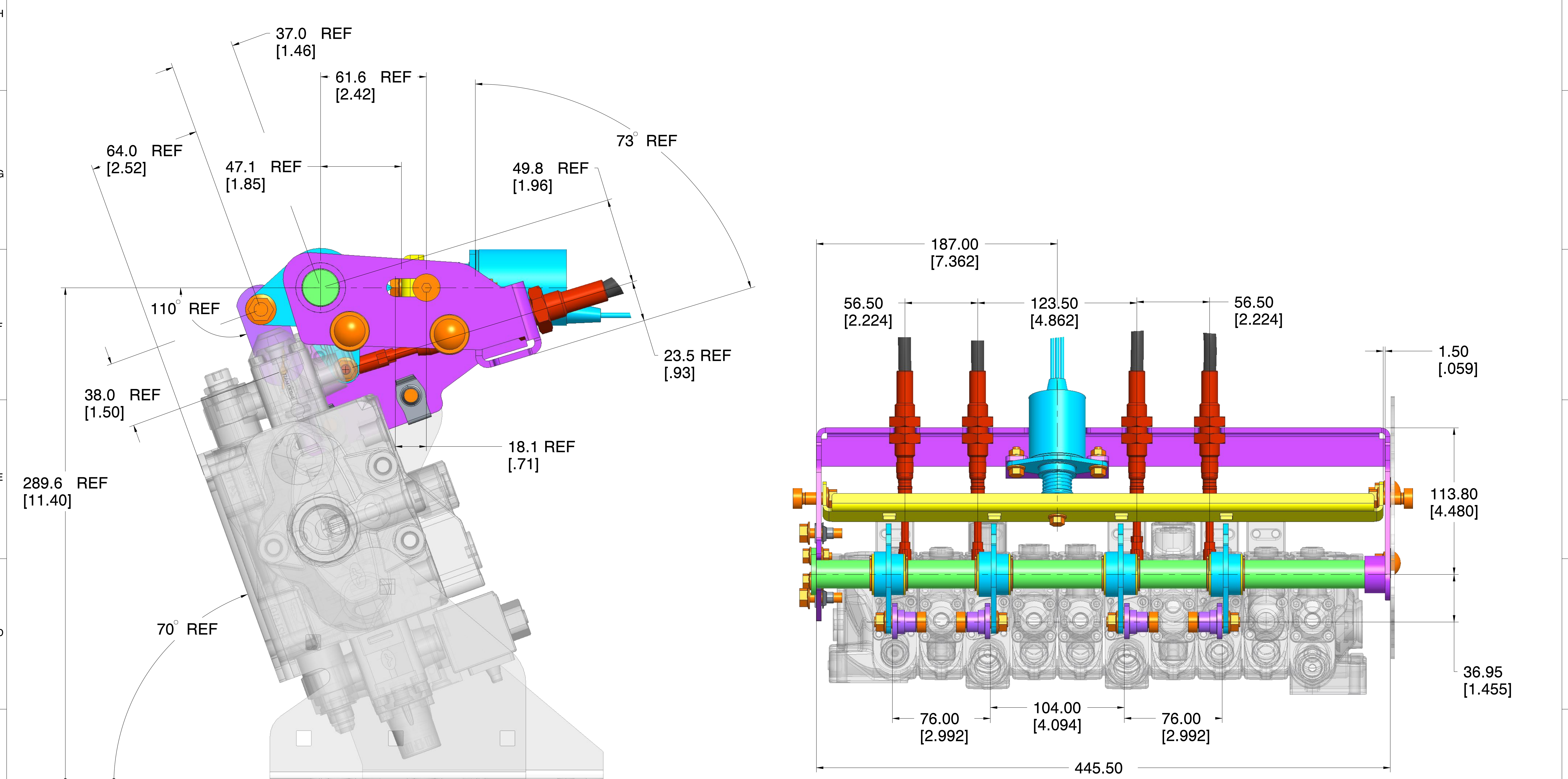


VIEW H FROM SHEET 1

VIEW K FROM SHEET 2

<p>WARNING</p> <p>THE EXPORT OR REEXPORT OF THIS DRAWING OR A PRODUCT PRODUCED BY THIS DRAWING IS SUBJECT TO U.S. EXPORT ADMINISTRATION REGULATIONS AND OTHER APPLICABLE GOVERNMENTAL RESTRICTIONS OR REGULATIONS.</p> <p>COPYRIGHT ©</p> <p>ORIGINALLY CREATED AND REVISED IN THE YEARS AS IDENTIFIED IN THE RELEASING ECN. BOBCAT COMPANY RESERVES ALL RIGHTS.</p> <p>PROPRIETARY NOTICE</p> <p>THIS DOCUMENT CONTAINS CONFIDENTIAL AND TRADE SECRET INFORMATION, IS THE PROPERTY OF BOBCAT COMPANY, AND IS GIVEN TO THE RECEIVER IN CONFIDENCE. THE RECEIVER, BY RECEPTION AND RETENTION OF THE DOCUMENT, ACCEPTS THE DOCUMENTS IN CONFIDENCE AND AGREES THAT, EXCEPT AS AUTHORIZED IN WRITING BY BOBCAT COMPANY, IT WILL (1) NOT USE THE DOCUMENT OR ANY COPY THEREOF OR THE CONFIDENTIAL OR TRADE SECRET INFORMATION THEREIN; (2) NOT COPY THE DOCUMENT; (3) NOT DISCLOSE TO OTHERS EITHER THE DOCUMENT OR THE CONFIDENTIAL OR TRADE SECRET INFORMATION THEREIN; AND (4) UPON COMPLETION OF THE NEED TO RETAIN THE DOCUMENT, OR UPON DEMAND, RETURN THE DOCUMENT, ALL COPIES THEREOF, AND ALL MATERIALS COPIED THEREFROM.</p>	D	MM[INCH]	<p>TOLERANCES:</p> <p>UNLESS OTHERWISE SPECIFIED</p> <p>SEE BOBCAT STANDARD DE-L FOR SHEETMETAL BEND RADIUS TOLERANCE</p> <p>X [X.X] ± 3 [.1]</p> <p>X.X [X.XX] ± 1.0 [.04]</p> <p>X.XX [X.XXX] ± .25 [.010]</p> <p>ANGULAR ± 1°</p> <p>FILLETS & RADII ± 1.5 [.06]</p>
	<p>UNLESS OTHERWISE SPECIFIED MACHINED SURFACE MAX. ROUGHNESS 125 μin / 3.2 μm</p>		
	<p>THIRD ANGLE PROJECTION</p>	<p>WELD SYMBOLS PER ANSI/AWS A2.4</p>	
	<p>CHARACTERS OR <TEXT> PER BCT STD PR-AH</p>		
	ECN	96556	
	MATL	SEE BOM	
	TREAT	.	
	HARD	.	
	S/A	2845.13 in ² 18355.66 cm ²	DWG. NO. 7278662
	WT	49.90 lb 22.636 kg	SHT 4/5

0	SEE SHEET 1	96556	LK
REV	DESCRIPTION	CHG NOTICE	DWN SHEET



VIEW L
FROM SHEET 3

VIEW M
FROM SHEET 1

0	SEE SHEET 1	96556	LK
REV	DESCRIPTION	CHG NOTICE	DWN SHEET

<p>WARNING</p> <p>THE EXPORT OR REEXPORT OF THIS DRAWING OR A PRODUCT PRODUCED BY THIS DRAWING IS SUBJECT TO U.S. EXPORT ADMINISTRATION REGULATIONS AND OTHER APPLICABLE GOVERNMENTAL RESTRICTIONS OR REGULATIONS.</p> <p>COPYRIGHT ©</p> <p>ORIGINALLY CREATED AND REVISED IN THE YEARS AS IDENTIFIED IN THE RELEASING ECN. BOBCAT COMPANY RESERVES ALL RIGHTS.</p> <p>PROPRIETARY NOTICE</p> <p>THIS DOCUMENT CONTAINS CONFIDENTIAL AND TRADE SECRET INFORMATION, IS THE PROPERTY OF BOBCAT COMPANY, AND IS GIVEN TO THE RECEIVER IN CONFIDENCE. THE RECEIVER, BY RECEPTION AND RETENTION OF THE DOCUMENT, ACCEPTS THE DOCUMENTS IN CONFIDENCE AND AGREES THAT, EXCEPT AS AUTHORIZED IN WRITING BY BOBCAT COMPANY, IT WILL (1) NOT USE THE DOCUMENT OR ANY COPY THEREOF OR THE CONFIDENTIAL OR TRADE SECRET INFORMATION THEREIN; (2) NOT COPY THE DOCUMENT; (3) NOT DISCLOSE TO OTHERS EITHER THE DOCUMENT OR THE CONFIDENTIAL OR TRADE SECRET INFORMATION THEREIN; AND (4) UPON COMPLETION OF THE NEED TO RETAIN THE DOCUMENT, OR UPON DEMAND, RETURN THE DOCUMENT, ALL COPIES THEREOF, AND ALL MATERIALS COPIED THEREFROM.</p>	D	MM[INCH]	<p>TOLERANCES:</p> <p>UNLESS OTHERWISE SPECIFIED</p> <p>SEE BOBCAT STANDARD DE-L FOR SHEETMETAL BEND RADIUS TOLERANCE</p> <p>X [X.X] ± 3 [.1]</p> <p>X.X [X.XX] ± 1.0 [.04]</p> <p>X.XX [X.XXX] ± .25 [.010]</p> <p>ANGULAR ± 1°</p> <p>FILLETS & RADII ± 1.5 [.06]</p> <p>Bobcat Company</p> <p>WEST FARGO, NORTH DAKOTA, USA</p> <p>TITLE</p> <p>INSTL CONTROLS</p>	
				UNLESS OTHERWISE SPECIFIED MACHINED SURFACE MAX. ROUGHNESS 125 μin / 3.2 μm
				THIRD ANGLE PROJECTION
				WELD SYMBOLS PER ANSI/AWS A2.4
		CHARACTERS OR <TEXT> PER BCT STD PR-AH		
	ECN	96556		
	MATL	SEE BOM		
	TREAT			
	HARD			
	S/A	2845.13 in ²	18355.66 cm ²	
	WT	49.90 lb	22.636 kg	
		DWG. NO.	7278662	
		SHT 5/5		