

Detail 01

External finishing

- Metal parapet ←
- Mechanically fastened anchor ←
- 2x Bitumen waterproofing (2x 2mm) ←
- Piece of wood (50mm) ←
- EPS insulation (150mm) ←
- Vapor barrier (2 mm) ←
- Ring Beam 200 ←

2%

External finishing

- Gravel (50mm) ←
- 2x Bitumen Waterproofing (2x 2mm) ←
- Glue Layer ←
- EPS insulation (150mm) ←
- Foil PVC Vapor barrier (2mm) ←
- JUB Jubizol EPS Slope (30mm) ←
- Reinforced concrete (200mm) ←
- Gypsum Bord (20mm) ←

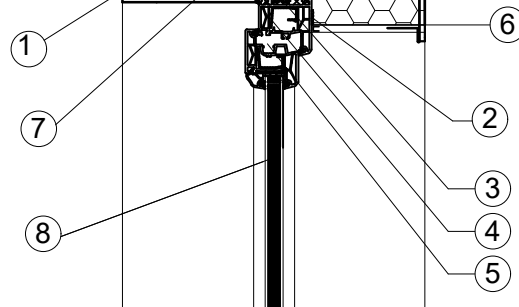
Piece of EPS


- Gypsum Plaster (5mm)
- 2x Bitumen Waterproofing (2x 2mm)
- EPS insulation (150mm)
- Porotherm 30 T Profi Dryfix, 248x300x249 mm
- EPS insulation (150mm)
- Steel Mesh
- Porotherm Universal (20mm)

External + Internal Finishing

Upper connections detailing

- 1 indoor plaster
- 2 sealant tape
- 3 polyurethane foam
- 4 elastic sealant
- 5 window system
- 6 window head
- 7 mechanically fastened anchors
- 8 Double glazing



Student: Ahmed Alshawi	Teacher: Ing. M. Noori, Ph.D.	 Czech Technical University in Prague	
Subject: Bachelor Thesis	Academic Year: 2016/2017		
Title: Detail 01		Scale: 1:10	No. of Drawing: 10