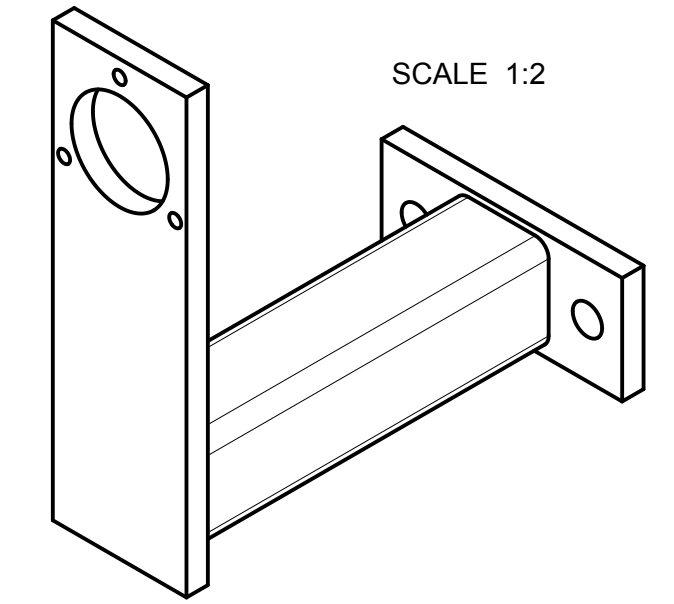
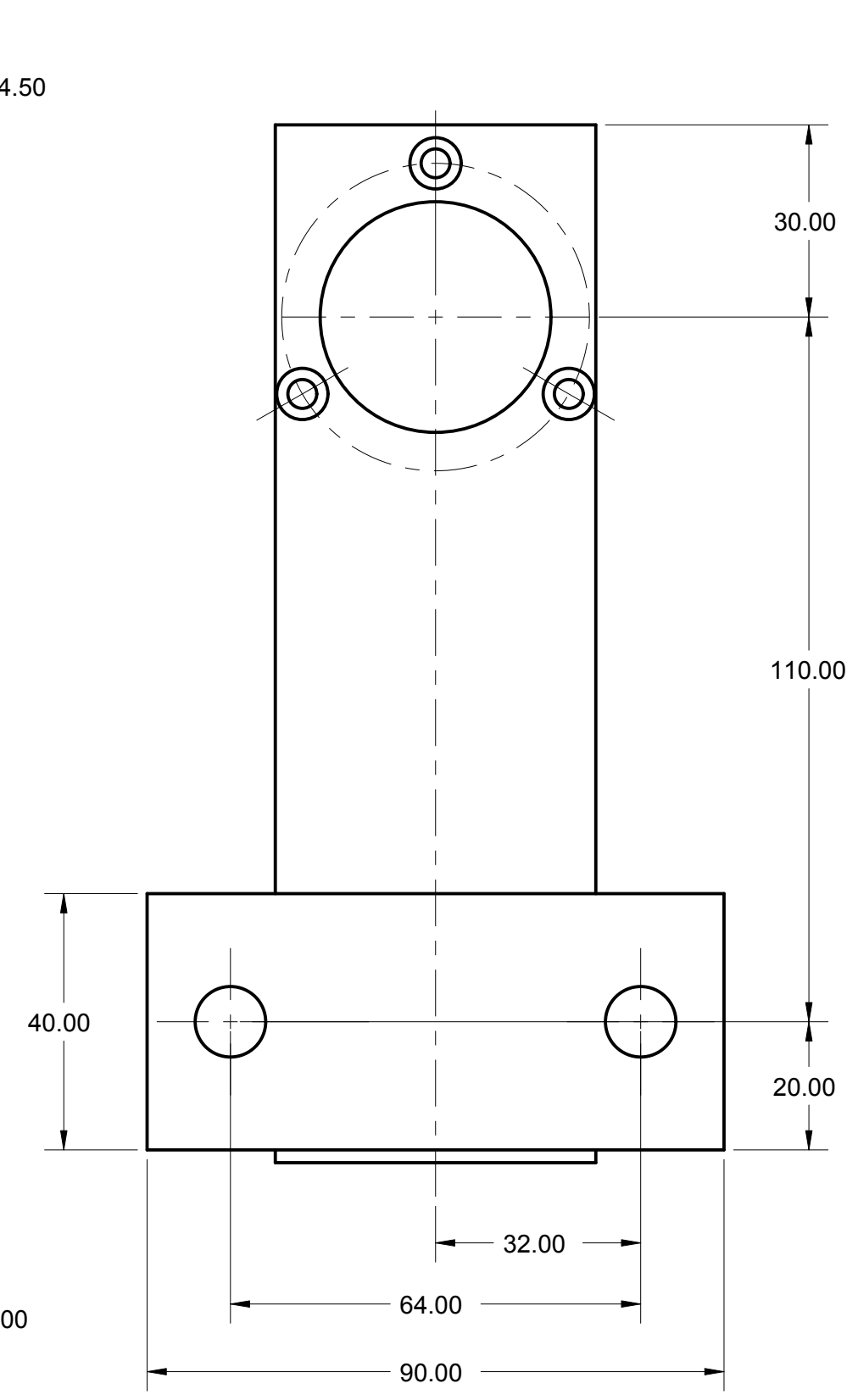
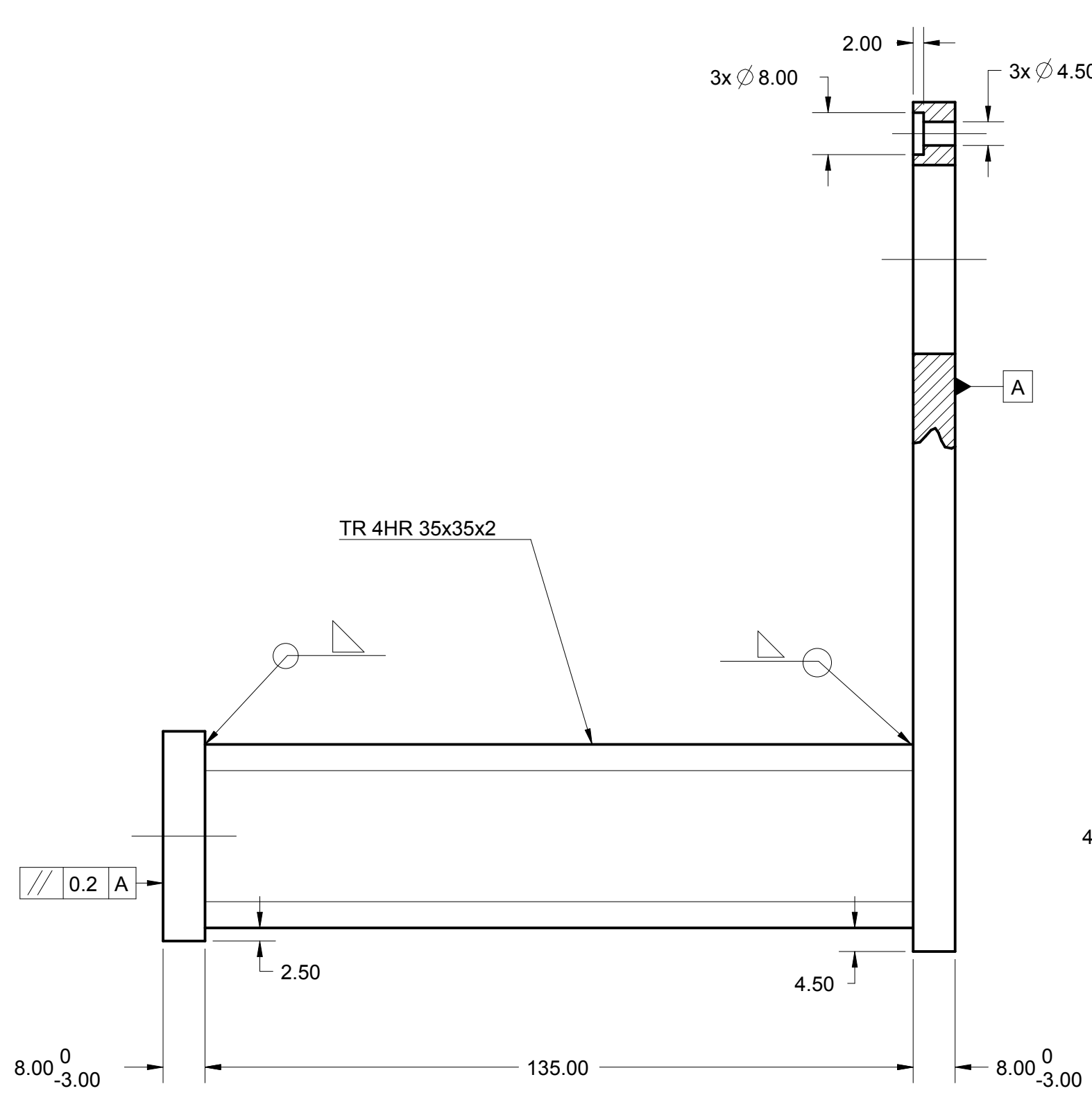
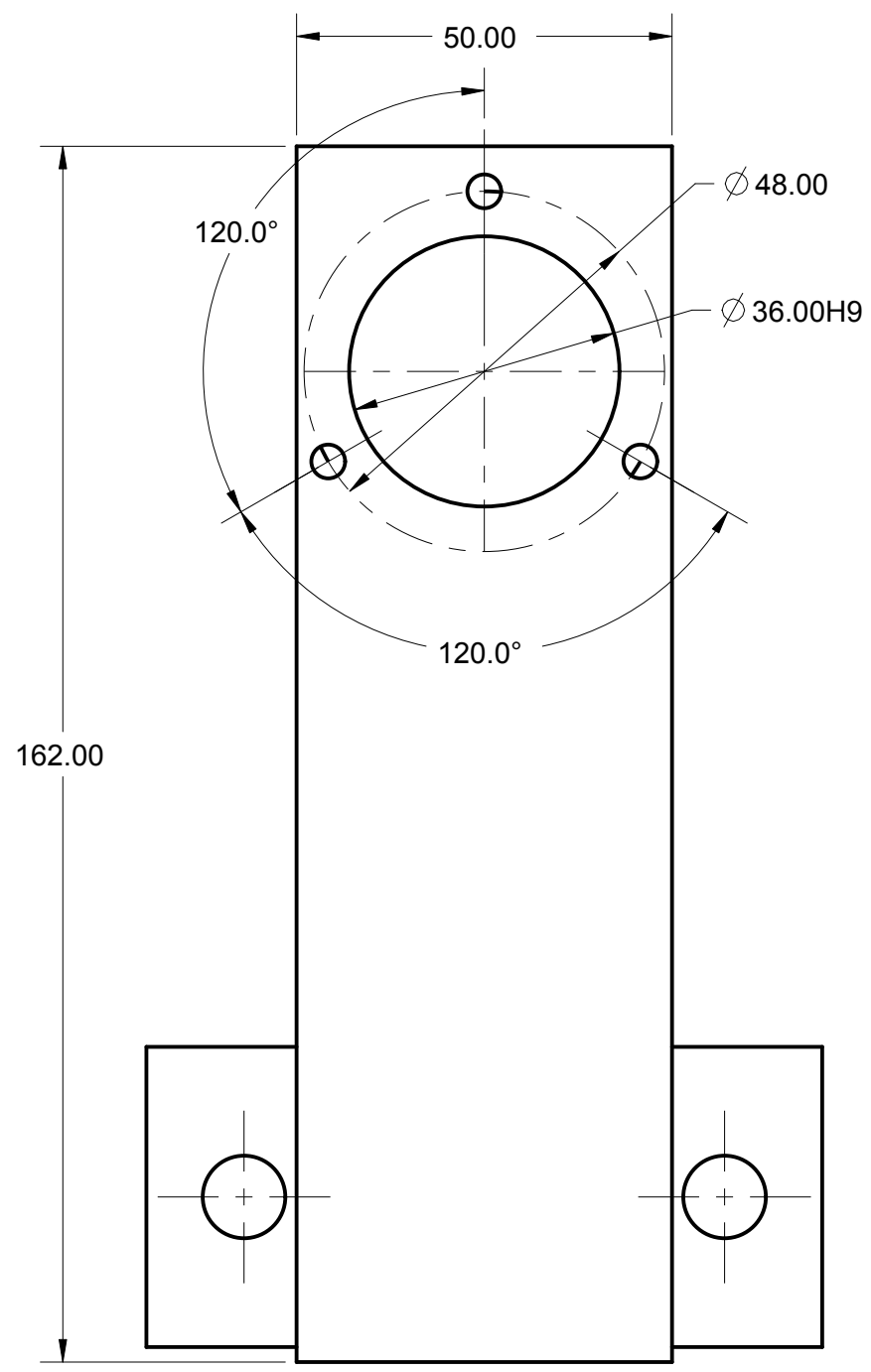


DRAWING REVISIONS							
REV	DESCRIPTION	ZONE	ECN	DATE	DRN BY	CHK BY	APP BY
A	PRELIMINARY RELEASE			2015AUG21	ZHU	LTO	
B	DESIGN CHANGED			2015SEP15	ZHU		



GENERAL TOLERANCES TO ISO 2768 FOR LINEAR AND ANGULAR DIMENSIONS						
TOLERANCE CLASS DESIGNATION	PERMISSIBLE DEVIATIONS IN MM FOR RANGES IN NOMINAL LENGTHS					
	0.5 to 3	over 3 up to 6	over 6 up to 30	over 30 up to 120	over 120 up to 400	over 400 up to 1000
f (fine)	±0.05	±0.05	±0.1	±0.15	±0.2	±0.3
m (medium)	±0.1	±0.1	±0.2	±0.3	±0.5	±0.8
c (coarse)	±0.2	±0.3	±0.5	±0.8	±1.2	±2
v (very coarse)	-	±0.5	±1	±1.5	±2.5	±4

NOTICE TO PERSONS RECEIVING THIS DRAWING AND/OR TECHNICAL INFORMATION

EATON CORPORATION CLAIMS PROPRIETARY RIGHTS IN THE MATERIAL DISCLOSED HEREON. THIS DRAWING AND/OR TECHNICAL INFORMATION IS ISSUED IN CONFIDENCE FOR ENGINEERING INFORMATION ONLY AND MAY NOT BE REPRODUCED OR USED TO MANUFACTURE ANYTHING SHOWN OR REFERRED TO HEREON WITHOUT DIRECT PERMISSION FROM EATON TO THE USER. THIS DRAWING AND/OR TECHNICAL INFORMATION IS LOANED FOR MUTUAL ASSISTANCE AND IS SUBJECT TO RECALL AT ANY TIME. THIS DRAWING AND/OR TECHNICAL INFORMATION IS THE PROPERTY OF EATON CORPORATION. EATON, AS SUPPLIER, WILL MEET AGREED TO DRAWING REQUIREMENTS AND SPECIFICATIONS THAT DEFINE THIS PRODUCT; HOWEVER, SUITABILITY FOR ANY INTENDED APPLICATION IS THE PURCHASER'S RESPONSIBILITY.

INTERPRET DIMENSIONS AND TOLERANCING PER ISO 129-1:2004

UNLESS OTHERWISE SPECIFIED

GENERAL TOLERANCES PER SURFACE  
ISO 2768-1 class mK FINISH =

HEAT TREATMENT  
NONE

MATERIAL  
STEEL ESTIMATED MASS (grams)  
1159

ENGINE

CUSTOMER CUSTOMER CHANGE LEVEL

CUSTOMER PART NUMBER

TITLE  
SUPPORT, ENCODER

DRAWING TYPE  
VTI

RELEASE STATUS  
PROTOTYPE

SIZE SCALE SHEET OF 1  
A2 1:1 B

DRAWING NUMBER  
371280-VTI

