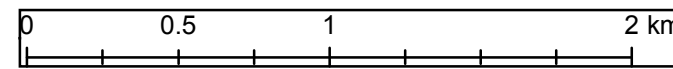
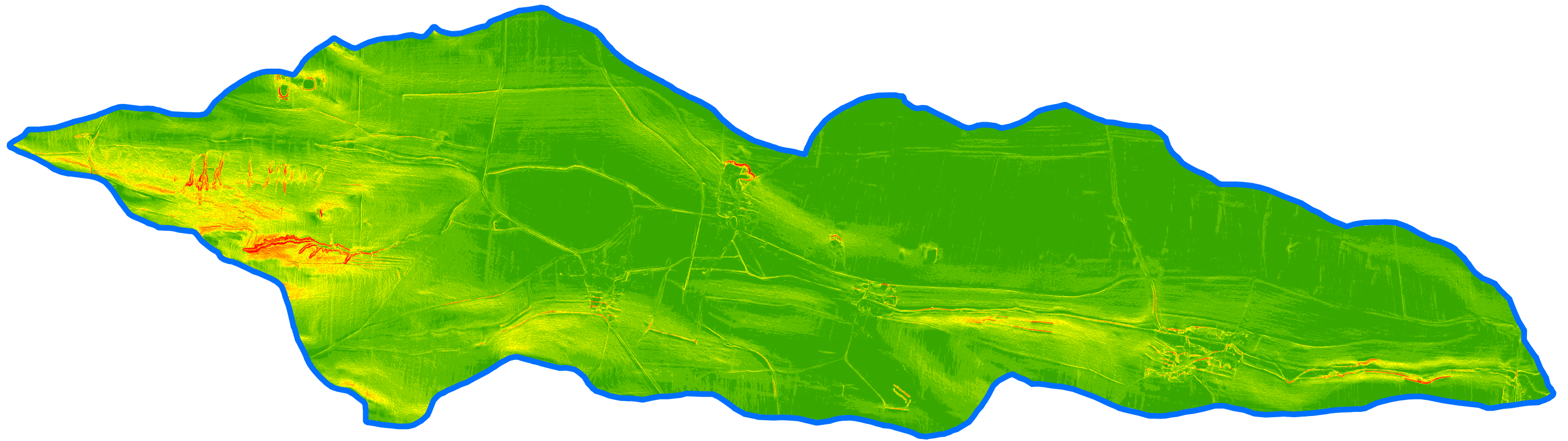


# Sklonové poměry na povodí Třebčického potoka

1:25 000



## Legenda

Sklon (%)	7.16 - 12.11	25.33 - 34.69	64.42 - 140.41
0 - 3.30	12.11 - 18.17	34.69 - 47.35	rozvodnice
3.30 - 7.16	18.17 - 25.33	47.35 - 64.42	