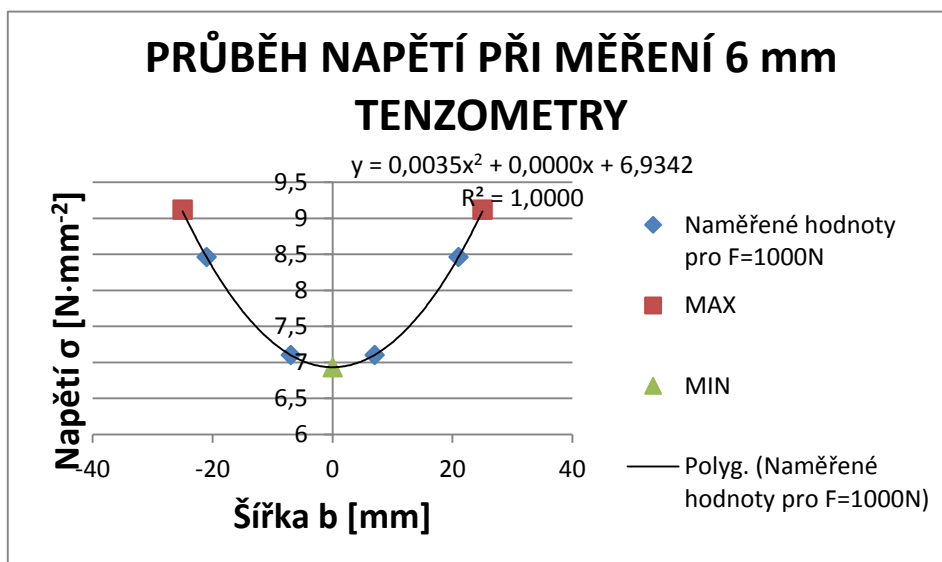


PŘÍLOHA I.

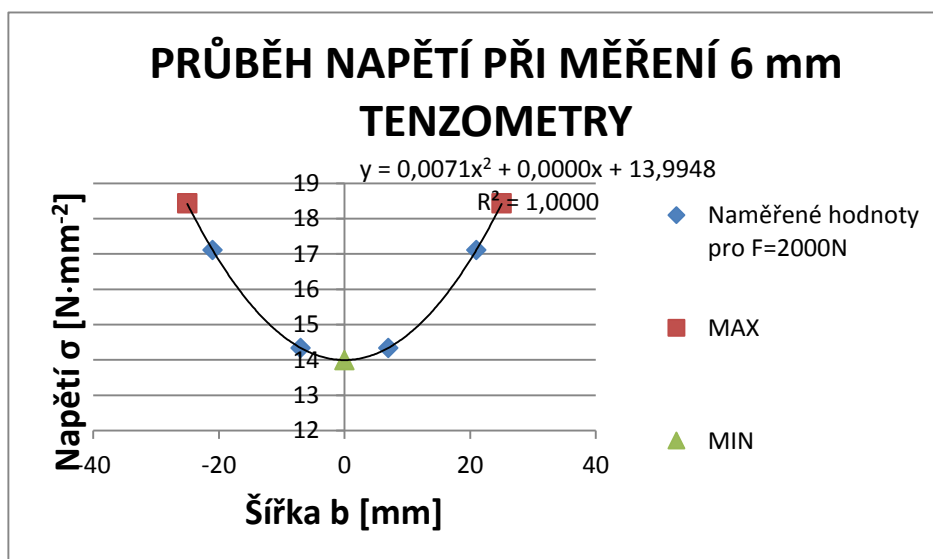
Měření tenzometry 6 mm pro síly $F = 1 - 4$ kN

- Naměřené hodnoty pro sílu $F = 1000$ N



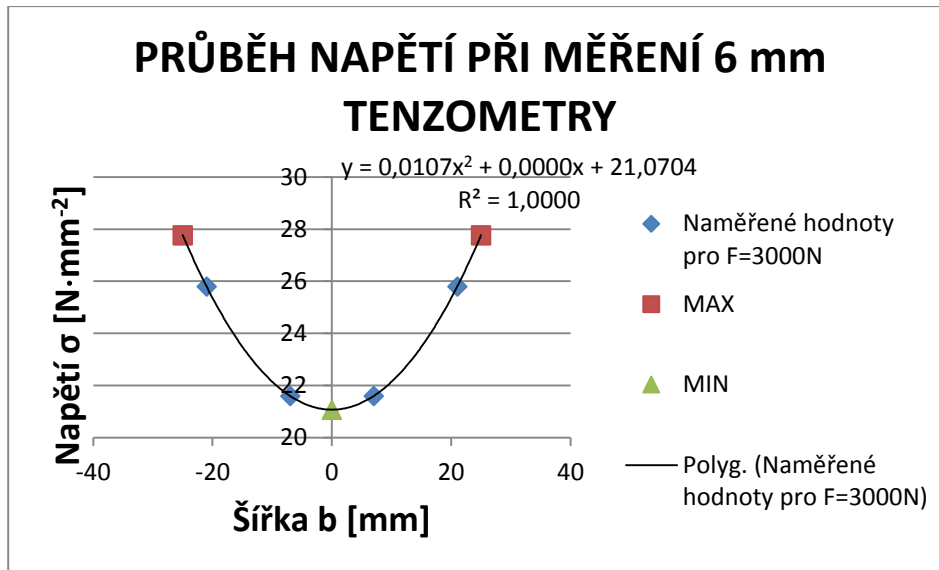
MAX	MIN	Součinitel α
9,12	6,93	1,14

- Naměřené hodnoty pro sílu $F = 2000$ N



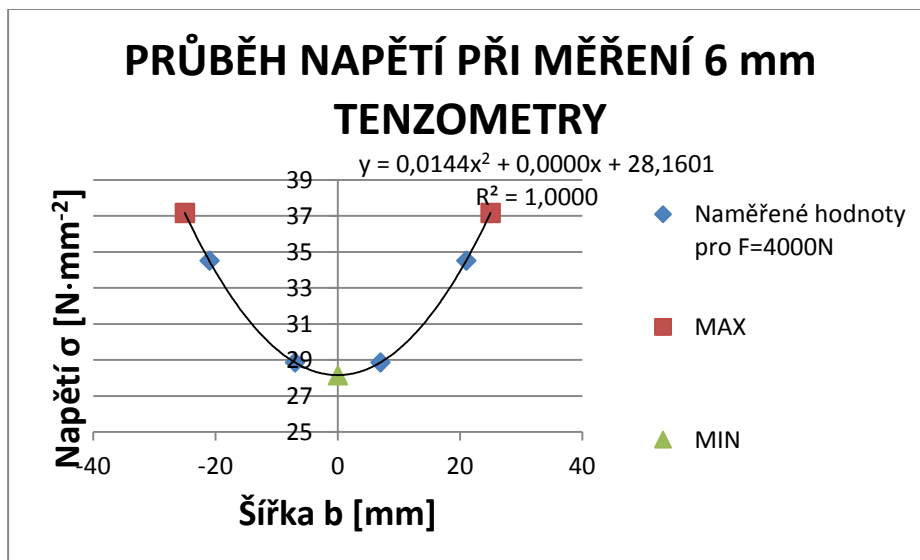
MAX	MIN	Součinitel α
18,43	13,99	1,15

- Naměřené hodnoty pro sílu $F = 3000\text{ N}$



MAX	MIN	Součinitel α
27,76	21,07	1,16

- Naměřené hodnoty pro sílu $F = 4000\text{ N}$

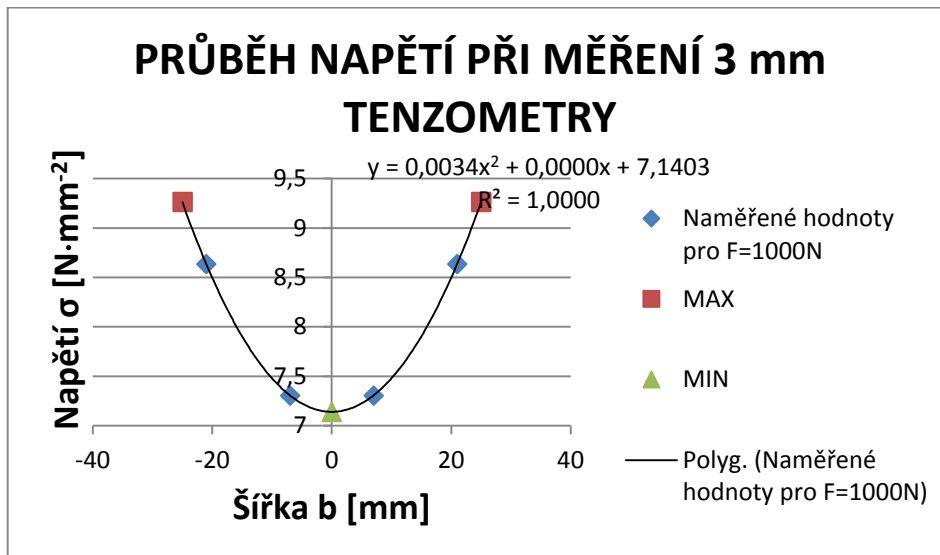


MAX	MIN	Součinitel α
37,16	28,16	1,16

PŘÍLOHA II.

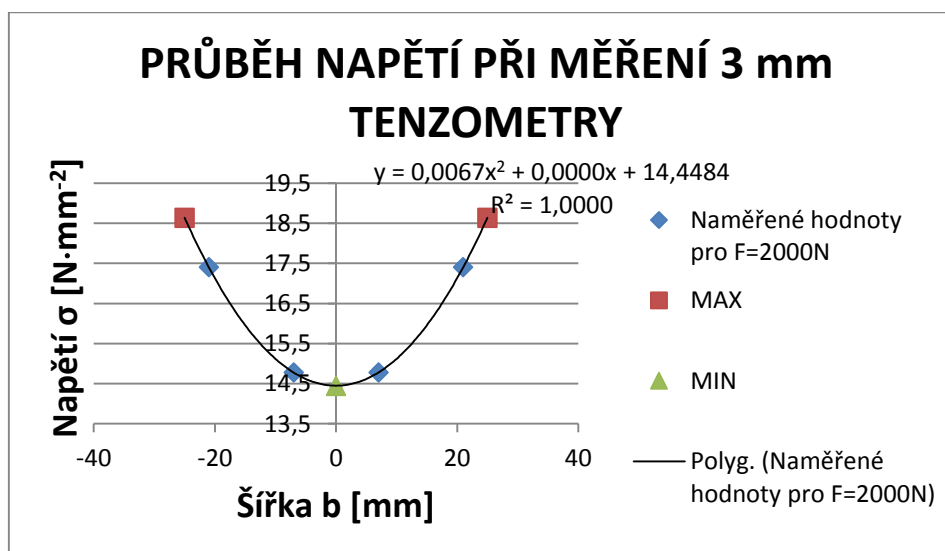
Měření tenzometry 3 mm pro síly $F = 1 - 4 \text{ kN}$

- Naměřené hodnoty pro sílu $F = 1000 \text{ N}$



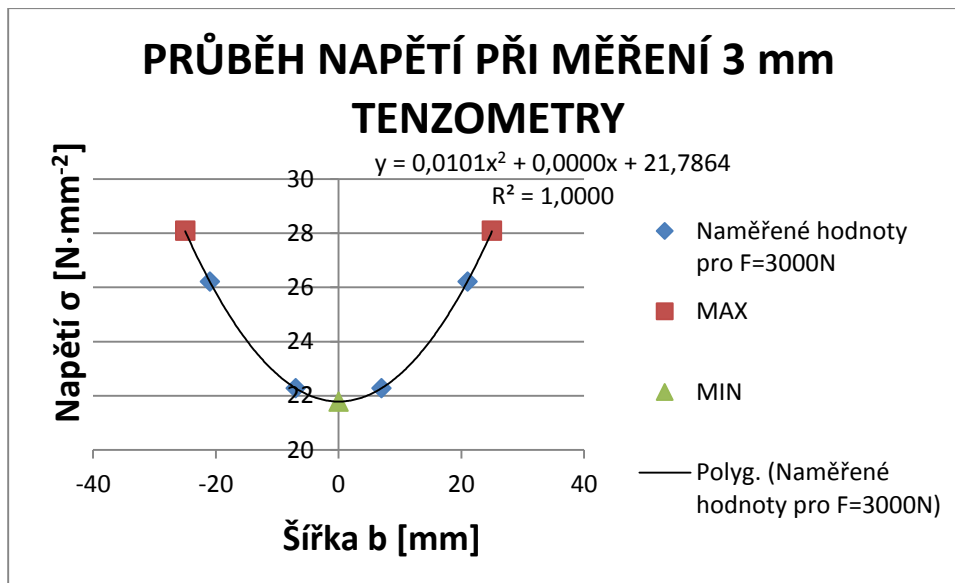
MAX	MIN	Součinitel α
9,27	7,14	1,16

- Naměřené hodnoty pro sílu $F = 2000 \text{ N}$



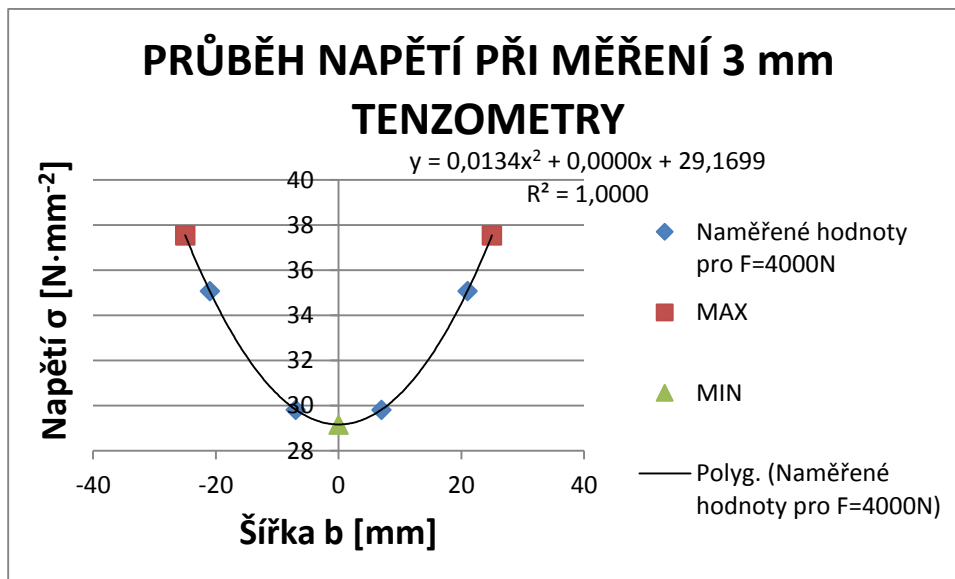
MAX	MIN	Součinitel α
18,64	14,45	1,16

- Naměřené hodnoty pro sílu $F = 3000 \text{ N}$



MAX	MIN	Součinitel α
28,1	21,79	1,17

- Naměřené hodnoty pro sílu $F = 4000 \text{ N}$

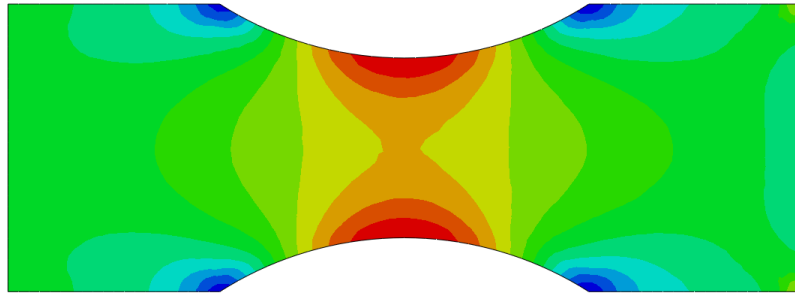
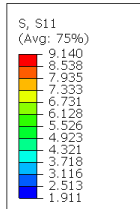


MAX	MIN	Součinitel α
37,54	29,17	1,17

PŘÍLOHA III.

Výsledné diagramy z programu Abaqus

- Naměřené hodnoty pro sílu $F = 1000 \text{ N}$

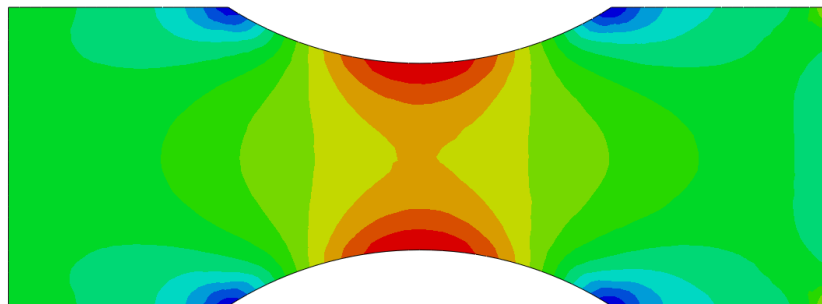
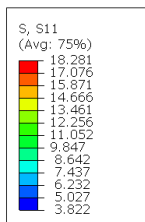


ODB: vzorekhen.odb Abaqus/Standard 6.13-2 Mon Jun 29 22:26:40 GMT+02:00 2015

Step: Step-1
Increment: 18; Step Time = 1.000
Primary Var: S, S11
Deformed Var: U; Deformation Scale Factor: +1.000e+00

MAX	Součinitel α
9,14	1,1425

- Naměřené hodnoty pro sílu $F = 2000 \text{ N}$

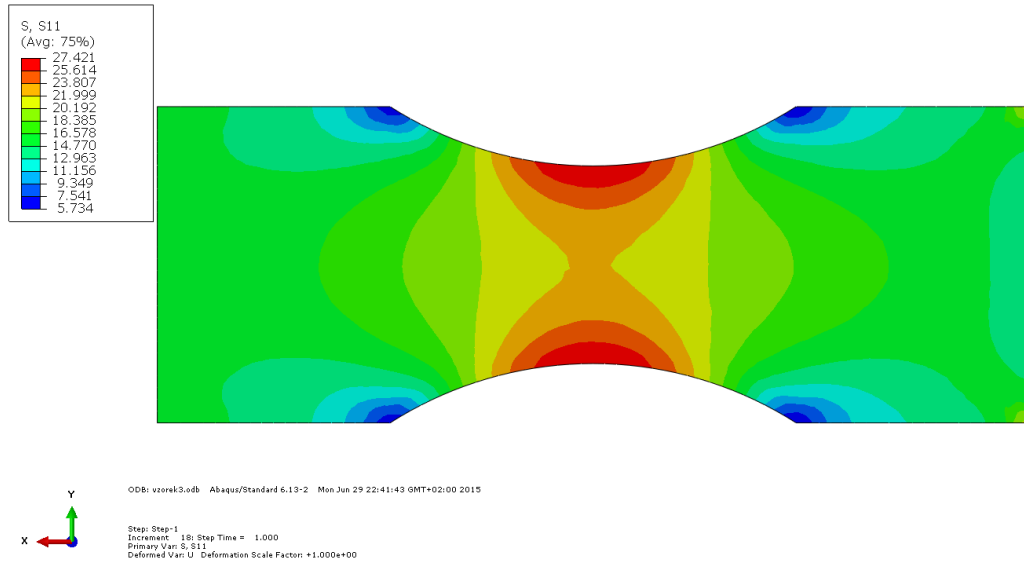


ODB: vzorek2.odb Abaqus/Standard 6.13-2 Mon Jun 29 22:39:17 GMT+02:00 2015

Step: Step-1
Increment: 18; Step Time = 1.000
Primary Var: S, S11
Deformed Var: U; Deformation Scale Factor: +1.000e+00

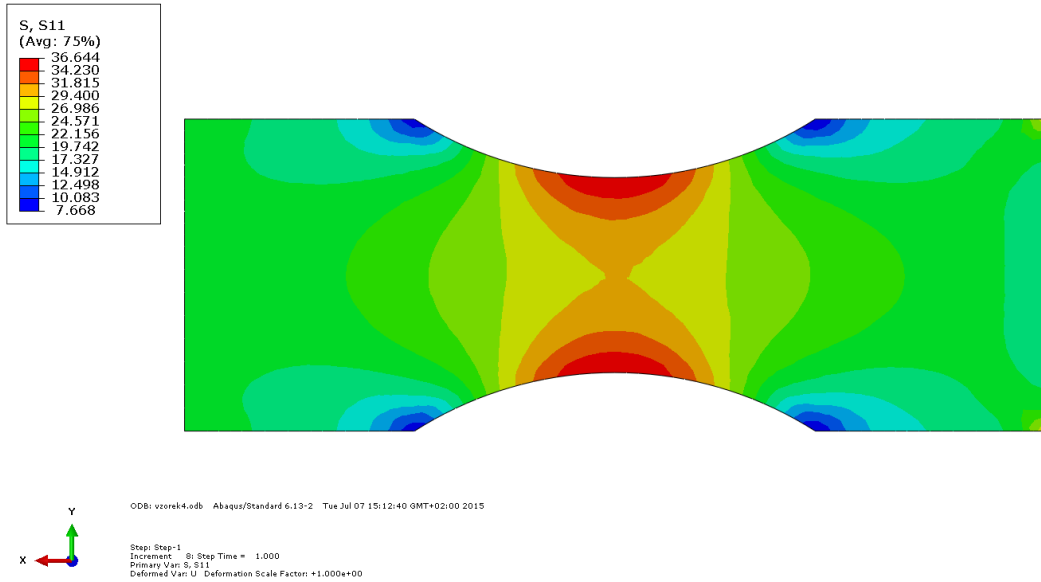
MAX	Součinitel α
18,281	1,14256

- Naměřené hodnoty pro sílu $F = 3000\text{ N}$



MAX	Součinitel α
27,421	1,14254

- Naměřené hodnoty pro sílu $F = 4000\text{ N}$



MAX	Součinitel α
36,644	1,14255