

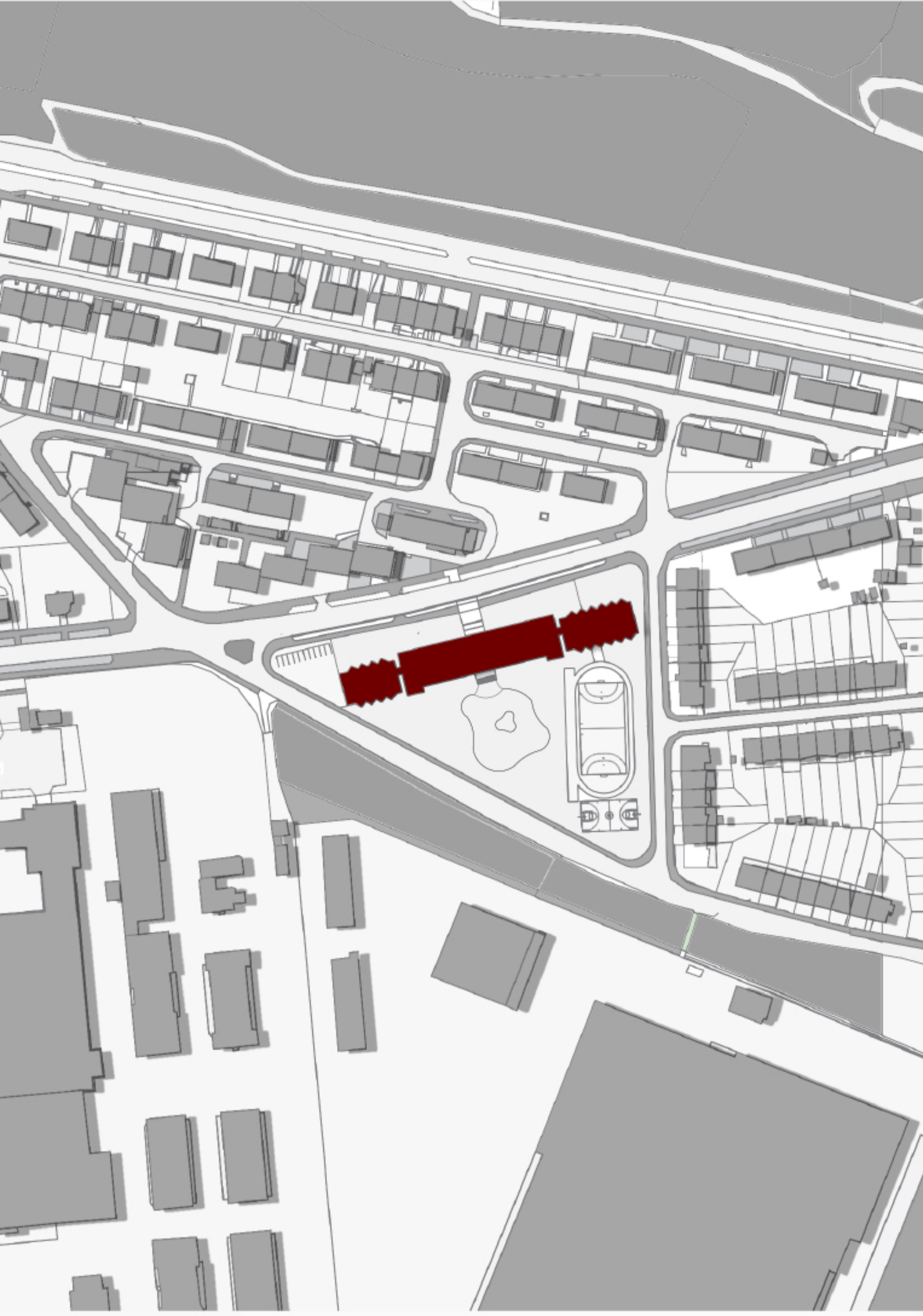
PROJECT BRIEF

The Primary School in Vlastina, nestled in the heart of one of Europe's most culturally vibrant cities, stands poised for transformation. The primary objective of this reconstruction is to address the issue of insufficient space for the increasing number of students. The existing structure, though valuable, is currently too small to accommodate the growing student population adequately.

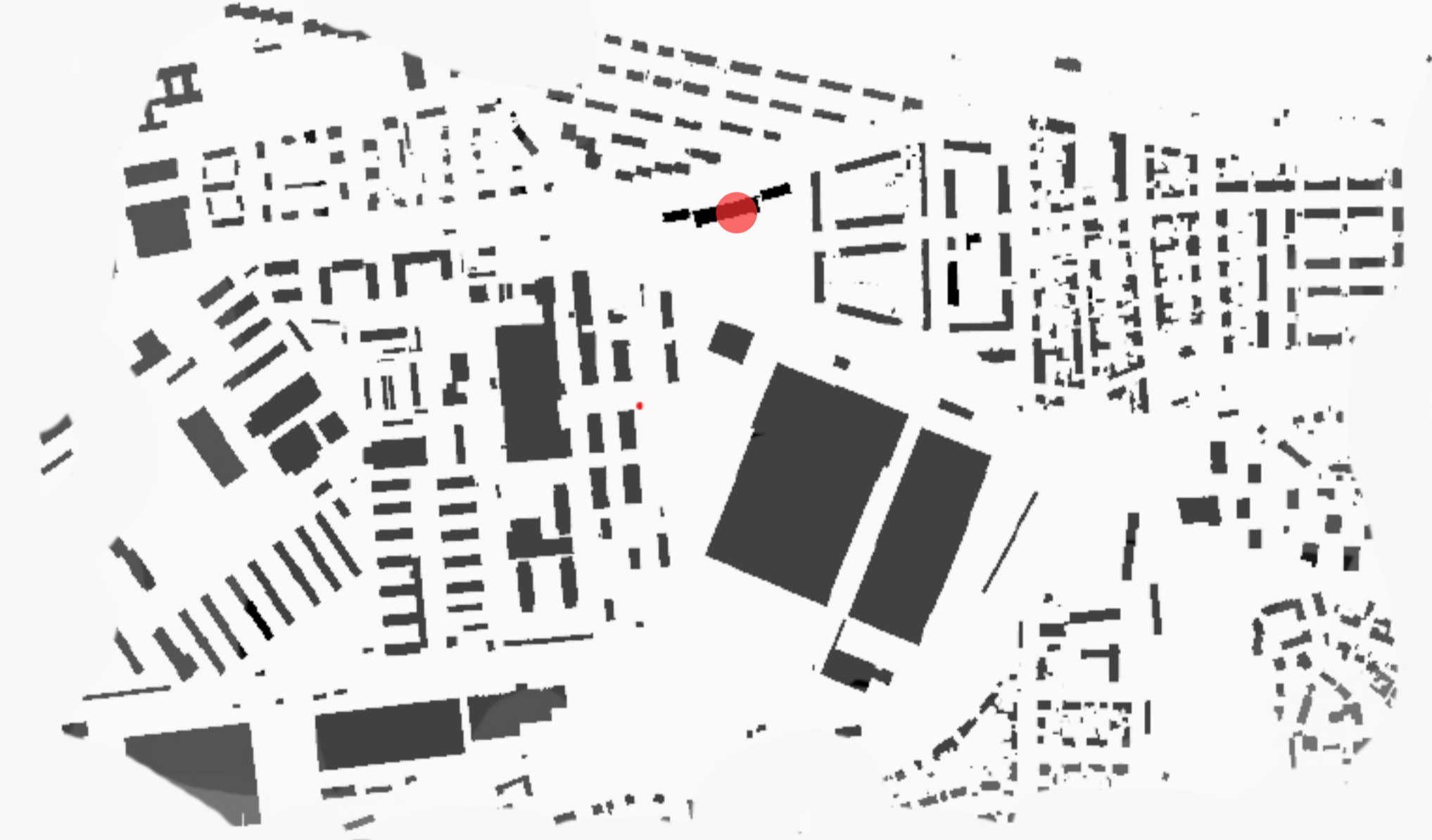
In order to meet the needs of the students without completely demolishing the existing building, our approach is on preserving as much of the original structure as possible. The goal is to maintain the historical and architectural integrity of the school while expanding its capacity through thoughtful additions.

These new constructions will be integrated seamlessly with the old building, ensuring a cohesive design that respects the school's heritage. The additions will include more classrooms and other necessary facilities, thereby creating a more accommodating and functional learning environment for the children.

The expanded structure will provide the space needed to support modern educational activities and enhance the overall learning experience. By carefully balancing preservation and expansion, this project aims to create a primary school that honors its past while meeting the demands of the present and future.



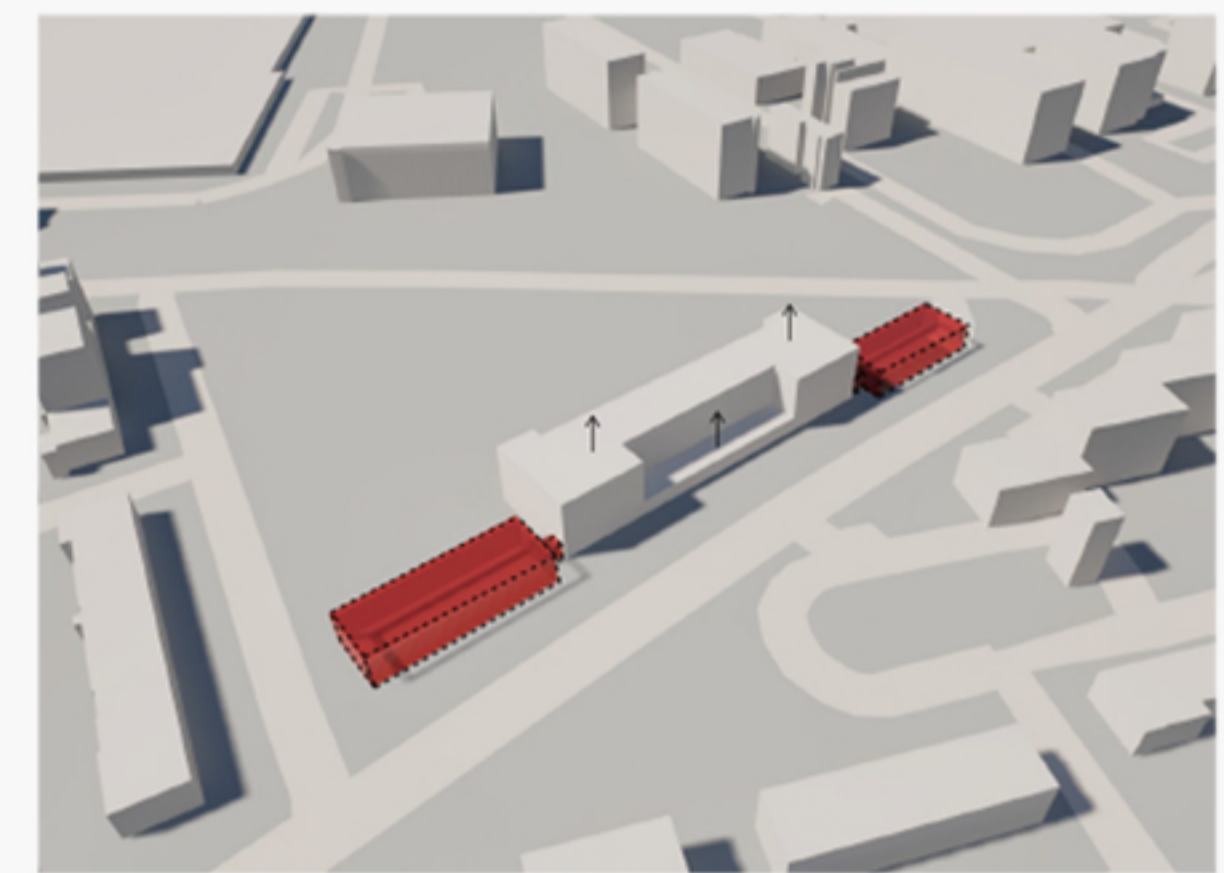
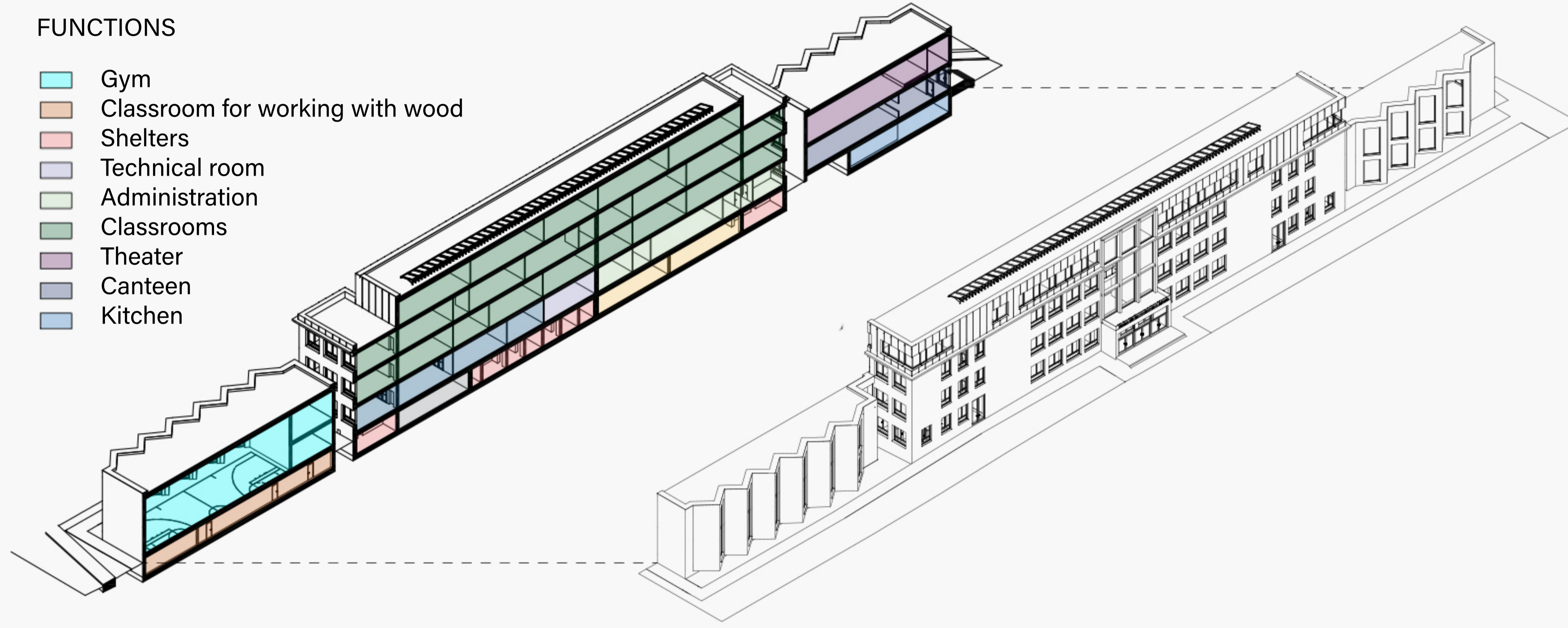
SCALE 1:2000



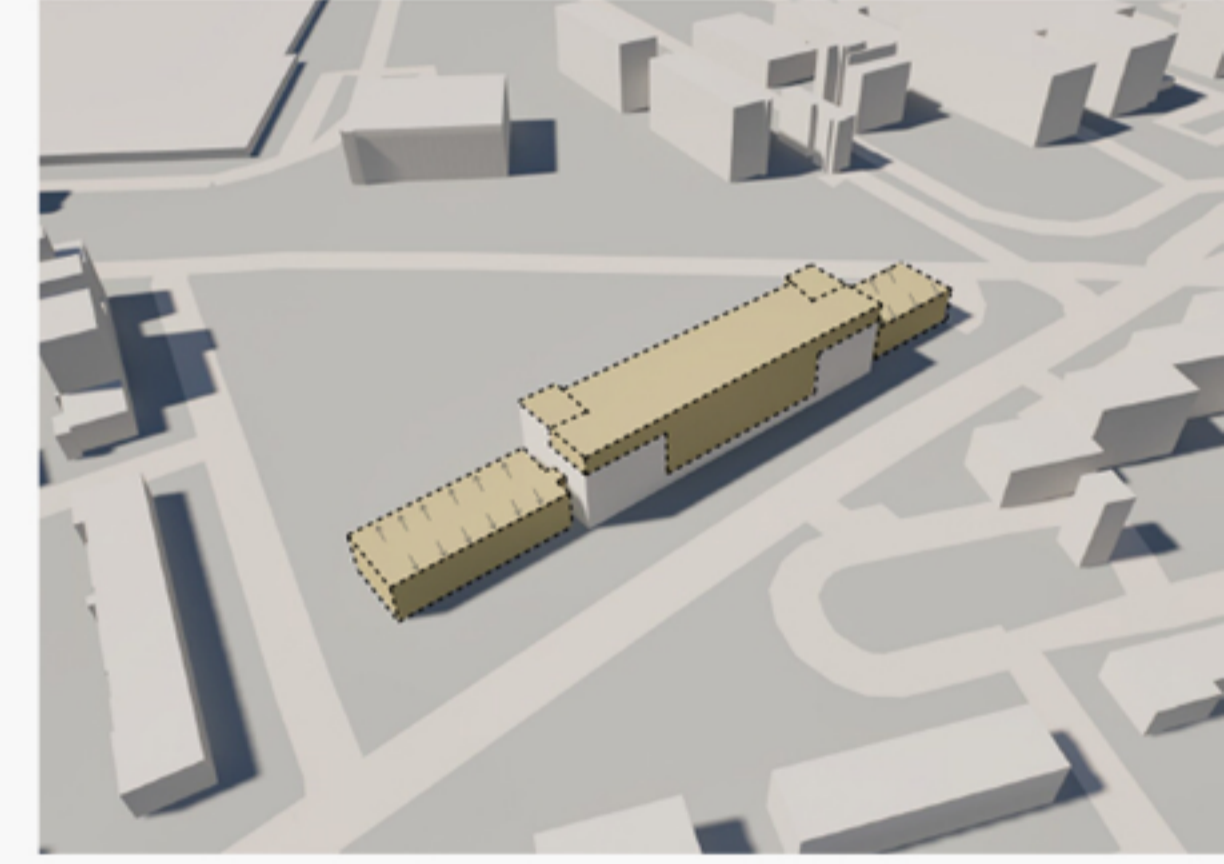
SCALE 1:10000

FUNCTIONS

- Gym
- Classroom for working with wood
- Shelters
- Technical room
- Administration
- Classrooms
- Theater
- Canteen
- Kitchen



In the main site, there was a structure which was not really compatible with the final goals. With saving the structure, the roofs has been removed and it prepared for the final form



Part of the structure has been saved and part has been changed and expanded due to the project's needs. Also an elevator was added to the planning for another vertical circulation

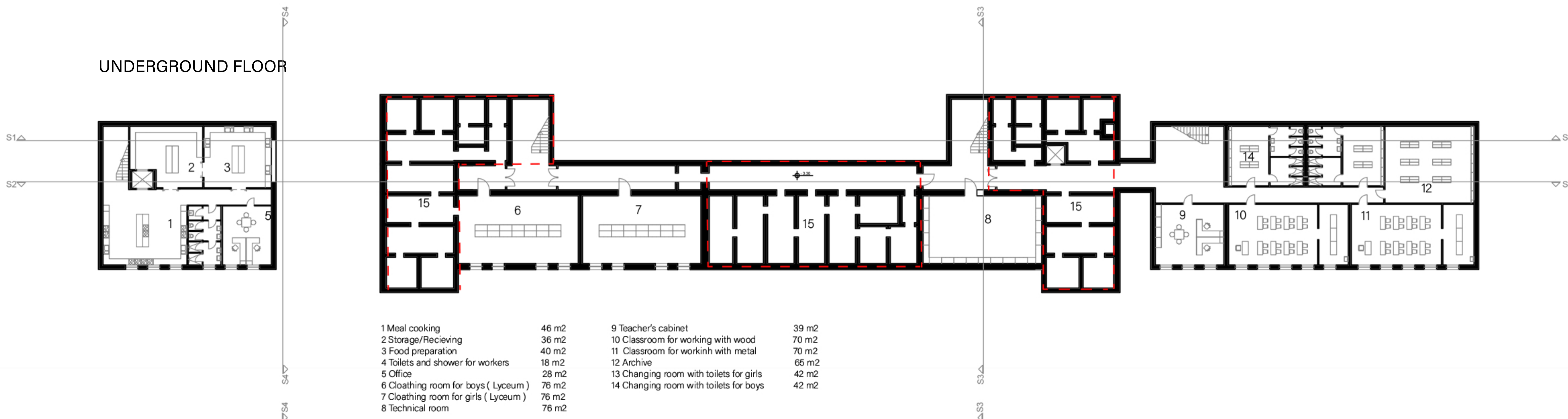


The main goal was to make visible difference between the part that has been it and preserved and the new part that will be added to define it with new modernist forms

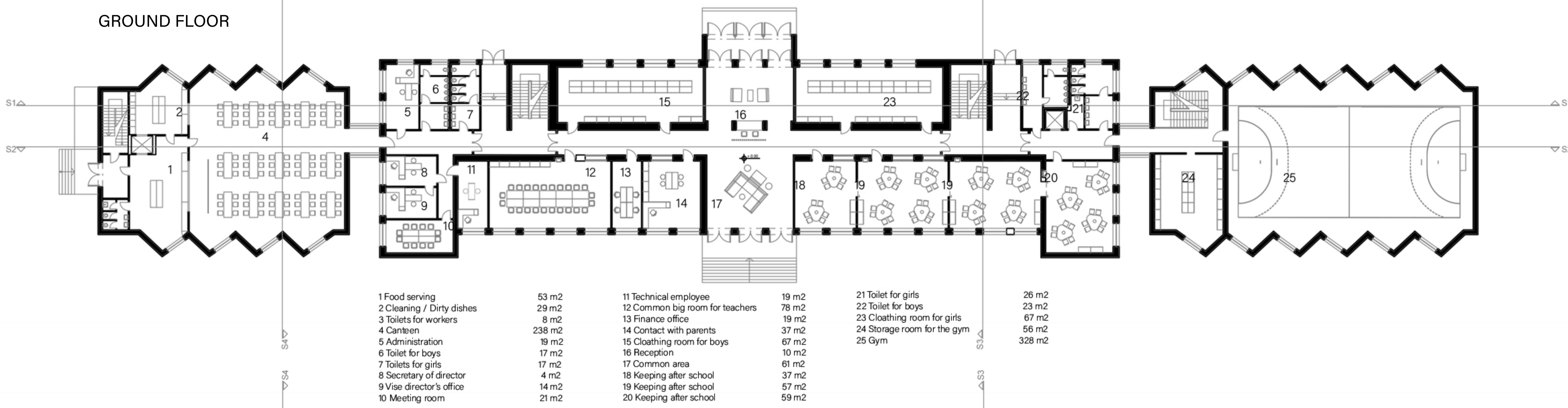


The final form is a combination of a 4 level volume, the new added floor and volumes is being made of aluminium panels to visually separate of the rest of the building

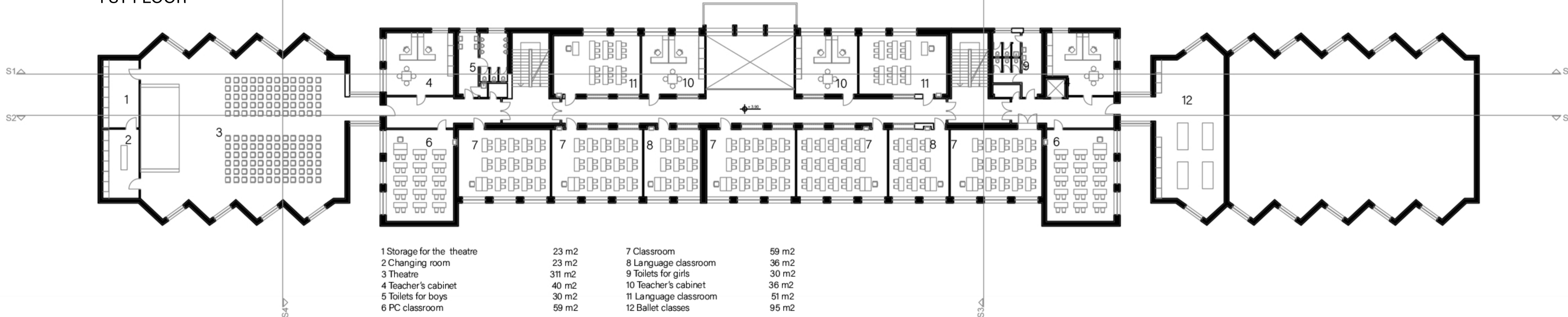
UNDERGROUND FLOOR



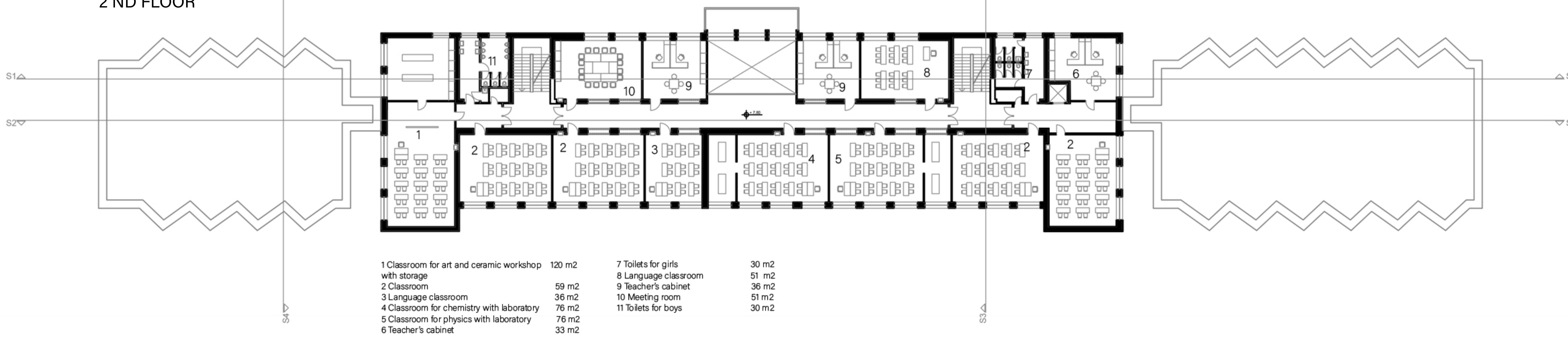
GROUND FLOOR



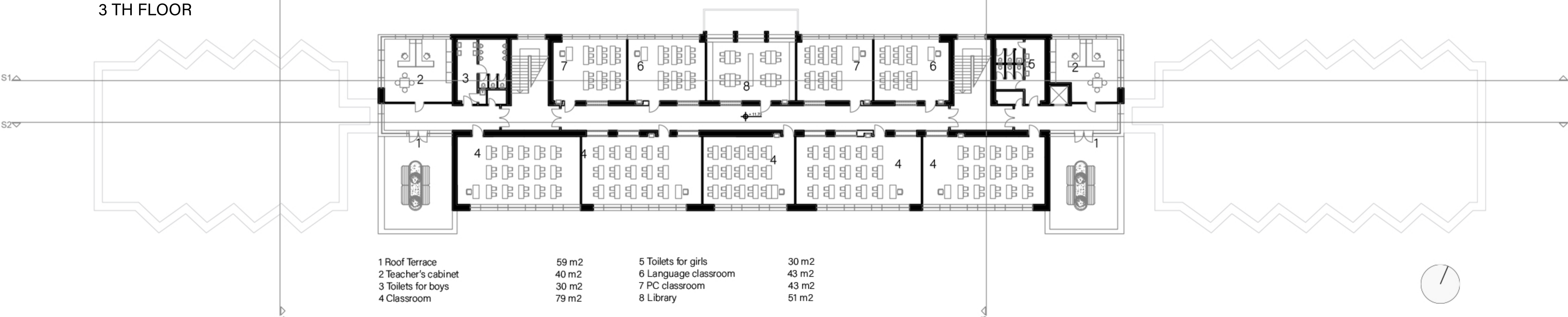
1 ST FLOOR



2 ND FLOOR



3 TH FLOOR

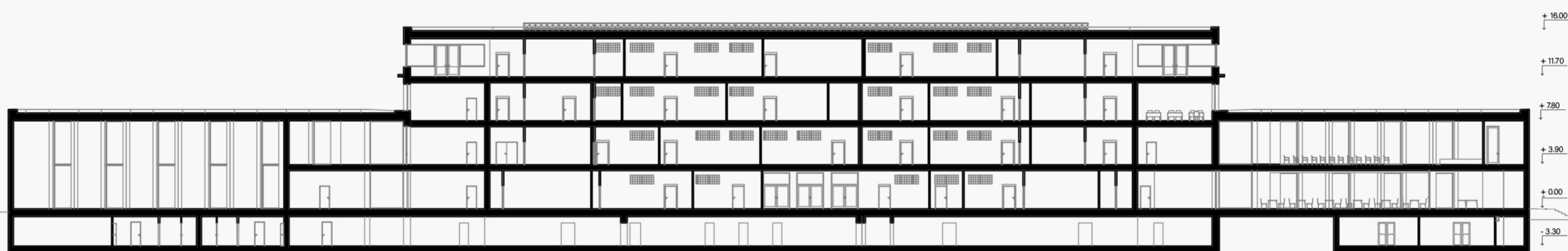


SCALE 1:400

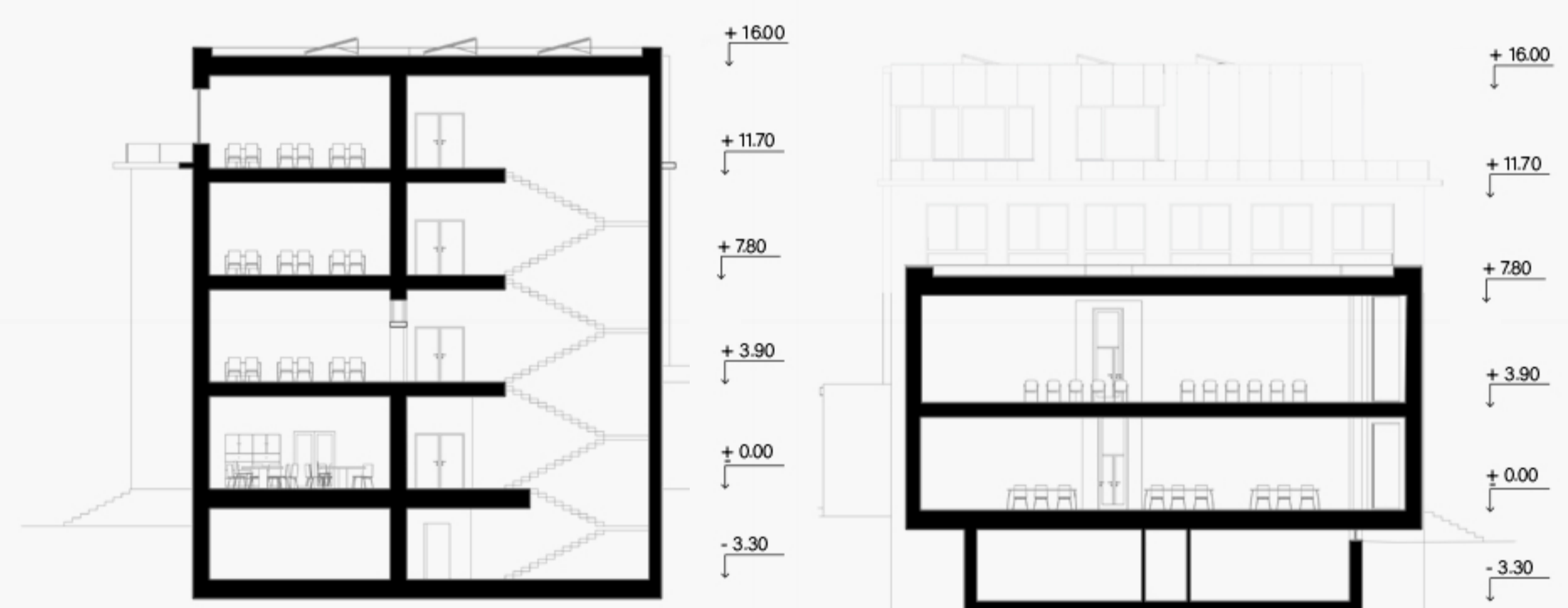
SCALE 1:400



SECTION 1-1



SECTION 2-2



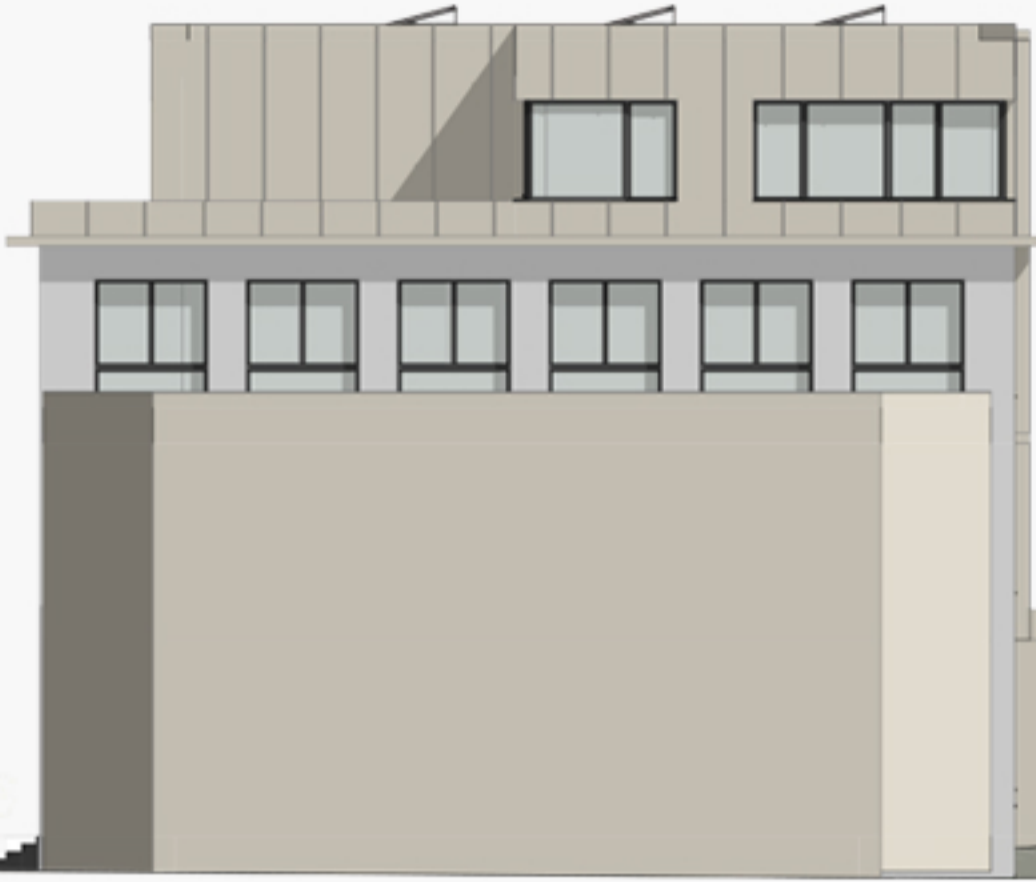
SECTION 3-3

SECTION 4-4





NORTH ELEVATION



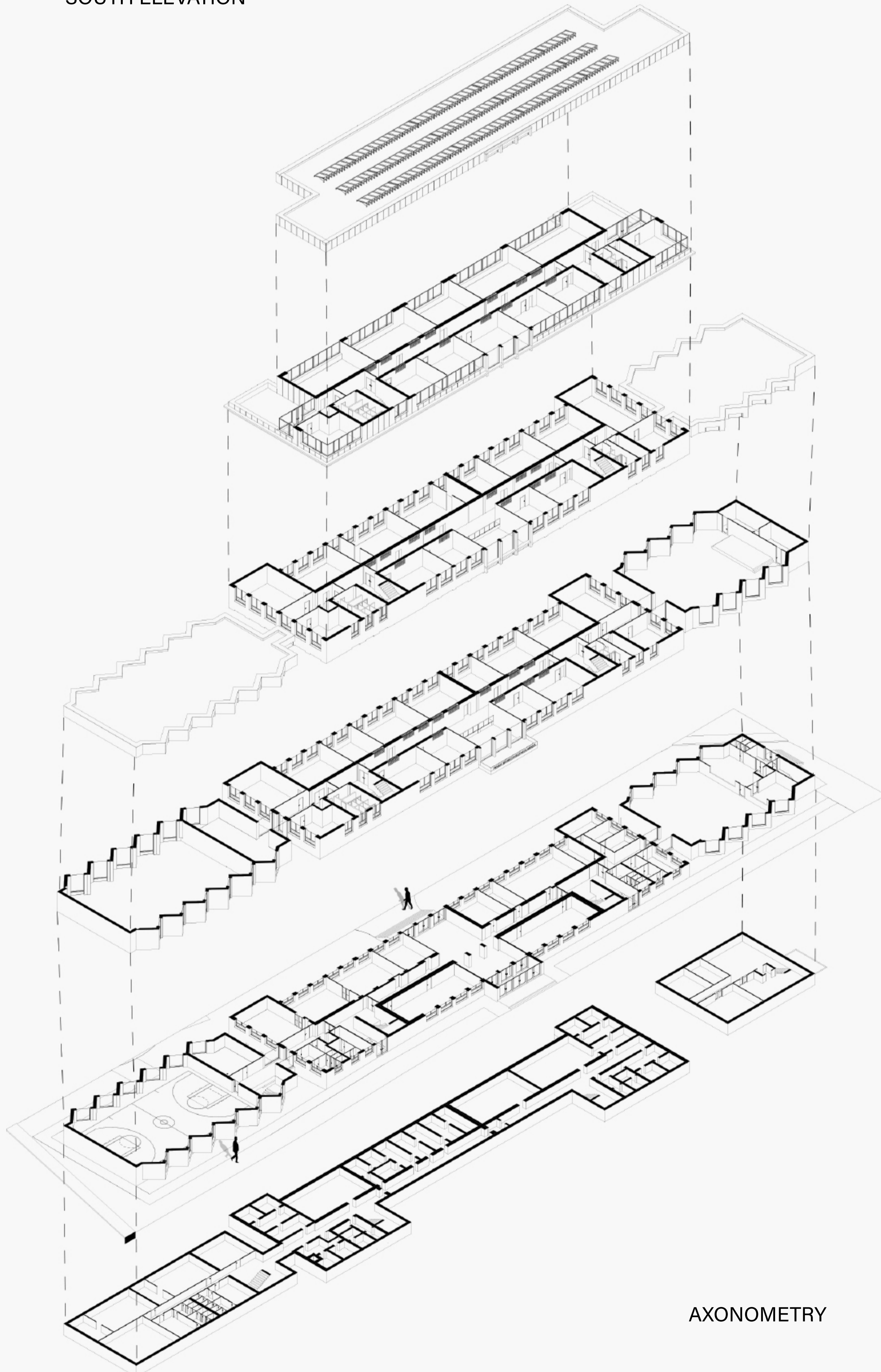
WEST ELEVATION



EAST ELEVATION



SOUTH ELEVATION



AXONOMETRY

