

Table 1 Summary of heritage value typologies devised by various scholars and organizations (Reigl 1982; Lipe 1984; for the Burra Charter, Australia ICOMOS 1999; Frey 1997; English Heritage 1997).

Reigl (1902)	Lipe (1984)	Burra Charter (1998)	Frey (1997)	English Heritage (1997)
Age	Economic	Aesthetic	Monetary	Cultural
Historical	Aesthetic	Historic	Option	Educational and academic
Commemorative	Associative-symbolic	Scientific	Existence	Economic
Use	Informational	Social (including spiritual, political, national, other cultural)	Bequest	Resource
Newness			Prestige	Recreational
			Educational	Aesthetic

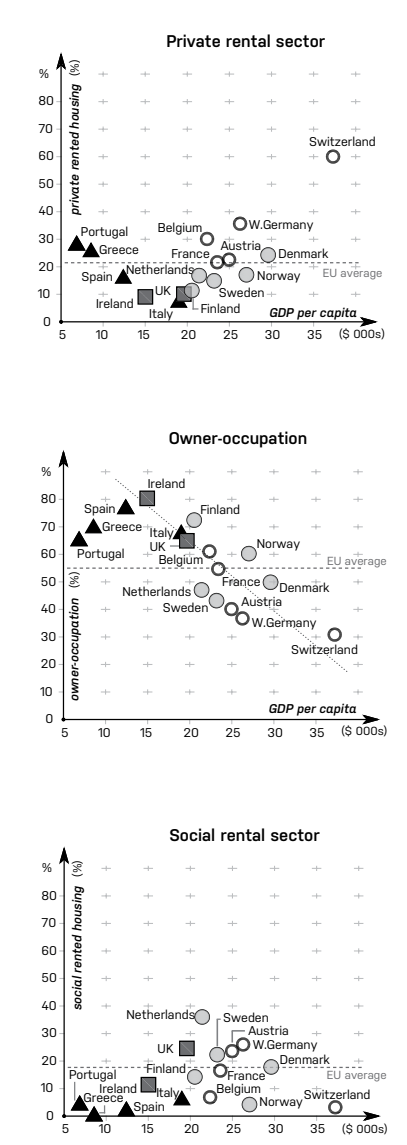
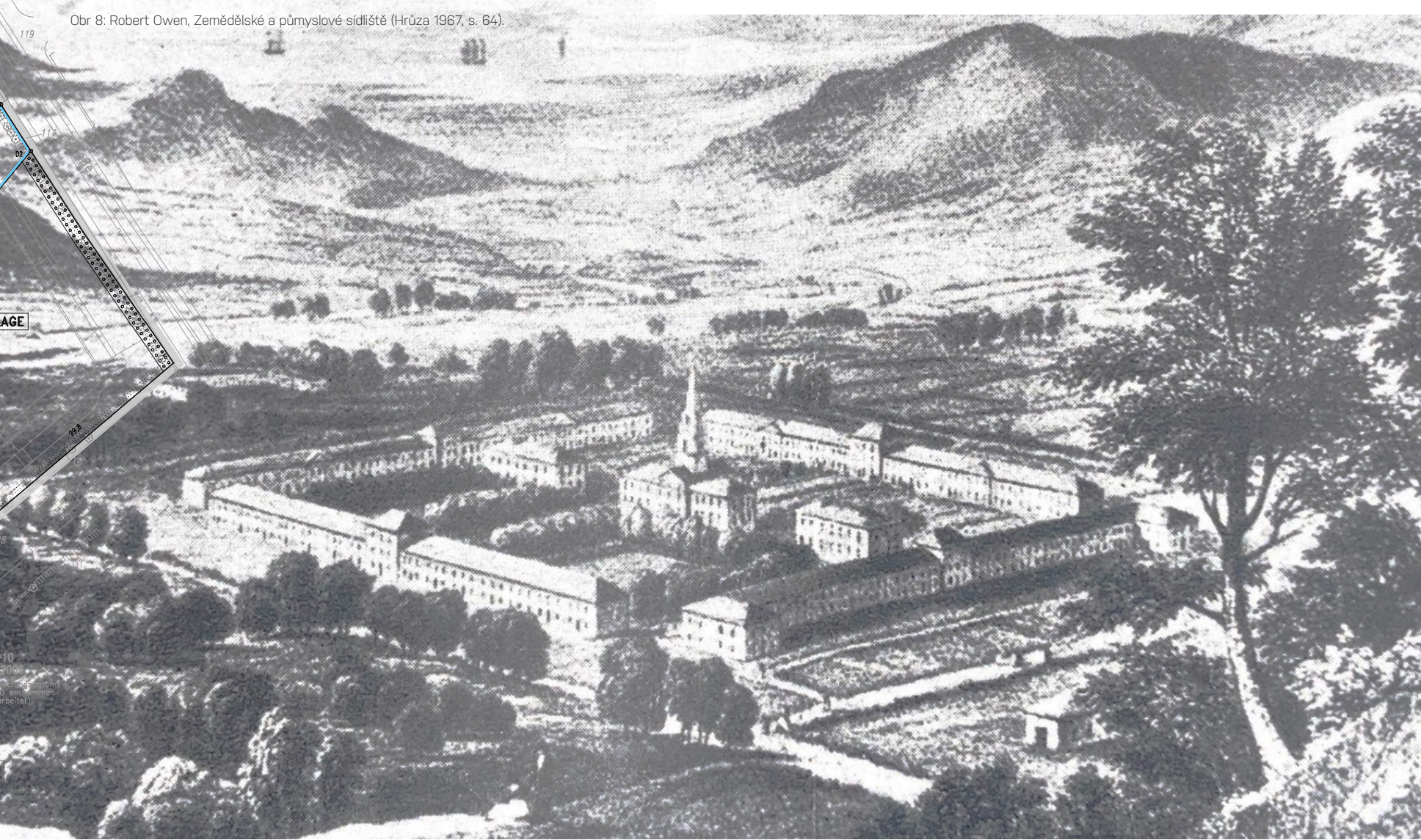


Table 8. Comparison of results of public-value capturing in England, Spain and the Netherlands

	On-site land development costs	Land for on-site public infrastructure	Land for on-site public buildings	On-site public buildings	Affordable housing	Contributions to off-site public infrastructure and facilities	Capturing betterment
England	Almost all the costs	Indirect through land/cheap financing	Most of the land	Part of the land	Part of the land	Not often	Almost always
Spain (Valencia)	All or almost all these costs	No (only if receiving building plots)	Almost all the land	Land that already was public infrastructure	Land that already was public infrastructure	Sometimes	Almost always
The Netherlands	Part of the costs	Heavy subsidies	Important part of the land	Important part of the land	Commercial developer provides most of the land	Commercial developer does not build housing association contributes	Almost always

Note: Dark grey: Country in which the developer/landowner contributes the most of the three countries. Light grey: Country in which the developer/landowner contributes the second most of the three countries. White: Country in which the developer/landowner contributes the least of the three countries.

