

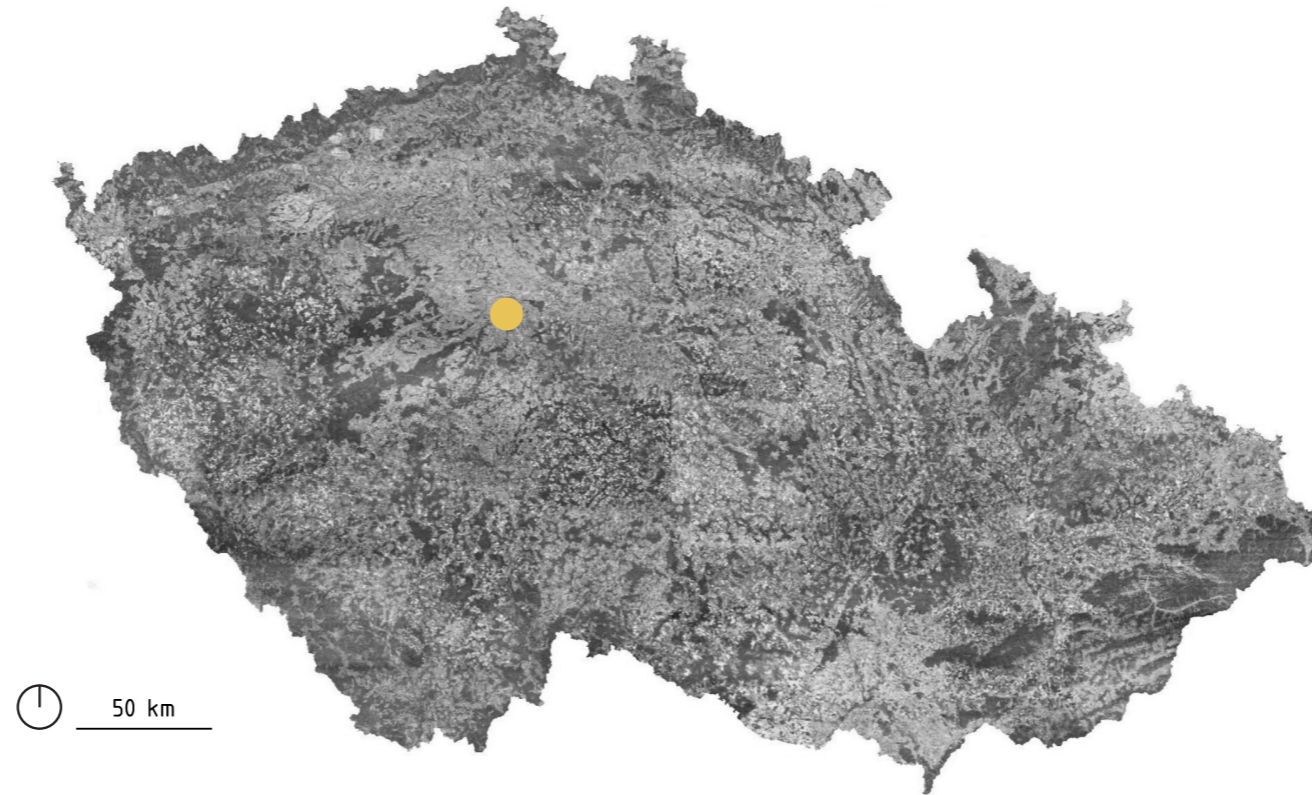
CITY OF THE CHEQUERED PAST

PORTFOLIO

ATELIER REHWALDT
PRAGUE - HÁJE

ADAM KURKA
AT3K ZS 2021_2022

LOCATION IN CZECH REPUBLIC



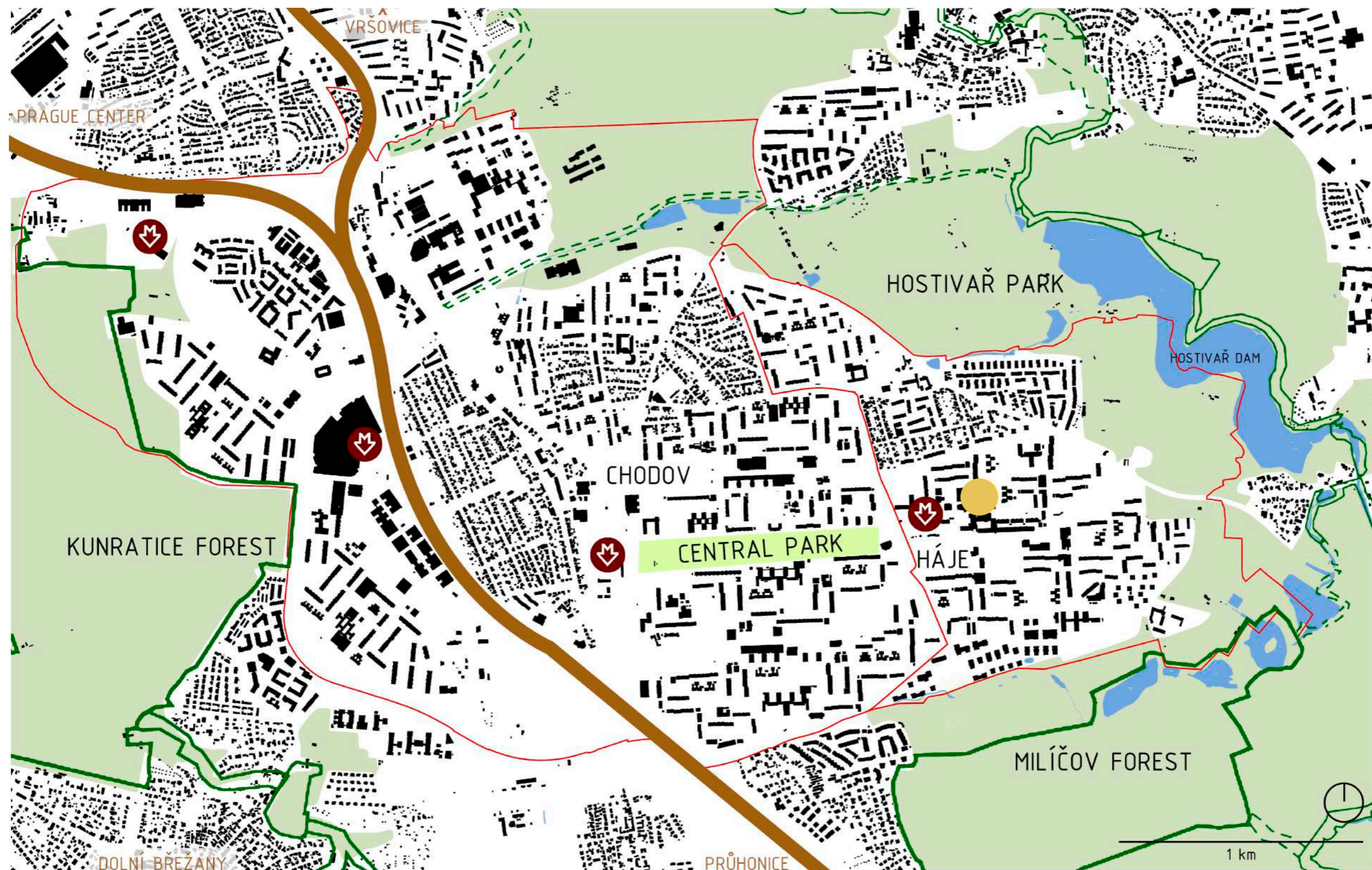
50 km

LOCATION IN PRAGUE




0 2400 4800 m

WIDER REALTIONS



LOCATION OF A DESIGNED SITE

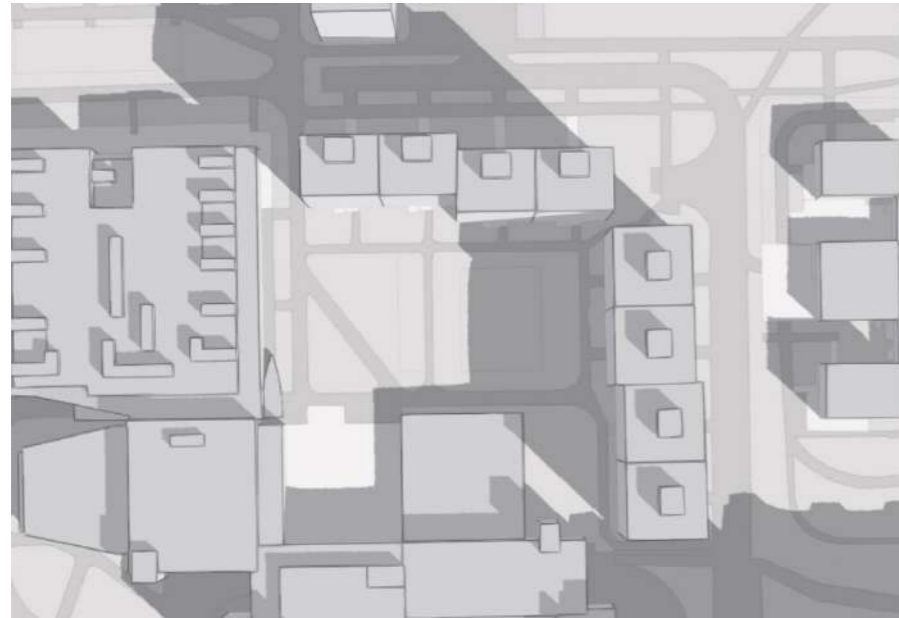
TIMELINE – SOUTH CITY

- 
- 1185 first mention
 - 1618–1648 Thirty Year's War – Jiří Vilém Michna z Vacínova
 - 1676 Benedictine monastery of St. Nicolas
 - 1728 sold to owner of Kunratice
 - 1848 Chodov, Litochleby, Šeberov and Hrnčíře formed one village
 - 1908 Šeberov and Hrnčíře were separated
 - 1918 Chodov excluded from the Great Prague plans
 - 1920s Chodov sold to Prague, became separated village as well as Háje which separated from Hostivař
 - 1949 part of "Praha – východ"
 - 1959 JZD Chodov
 - 1960 part of "Praha – západ"
 - 1960s D1 and water piping from Želivka river are being built using the area of Prague 11
 - 1968 Praha 4
 - 1990 Praha 11
 - 1994 name "Praha – Jižní Město"

PHOTODOCUMENTATION FROM THE SITE - HÁJE



ANALYSIS: SUNLIGHT



20. 3. & 22. 9. 8:55 beginning of 50% litted space



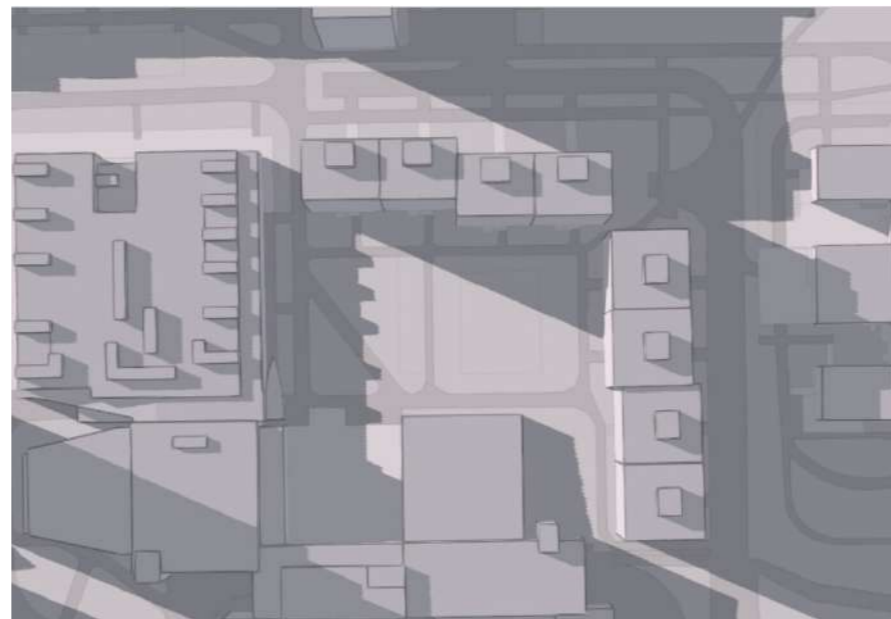
21. 6. 8:25 beginning of 50% litted space



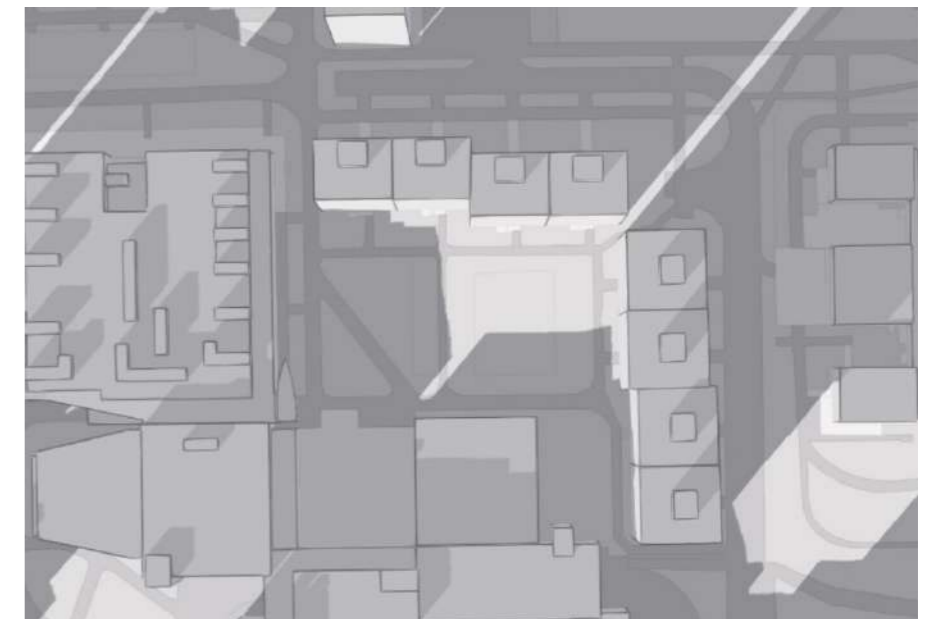
21. 12. 10:26 beginning of 50% litted space



20. 3. & 22. 9. 16:58 end of 50% litted space

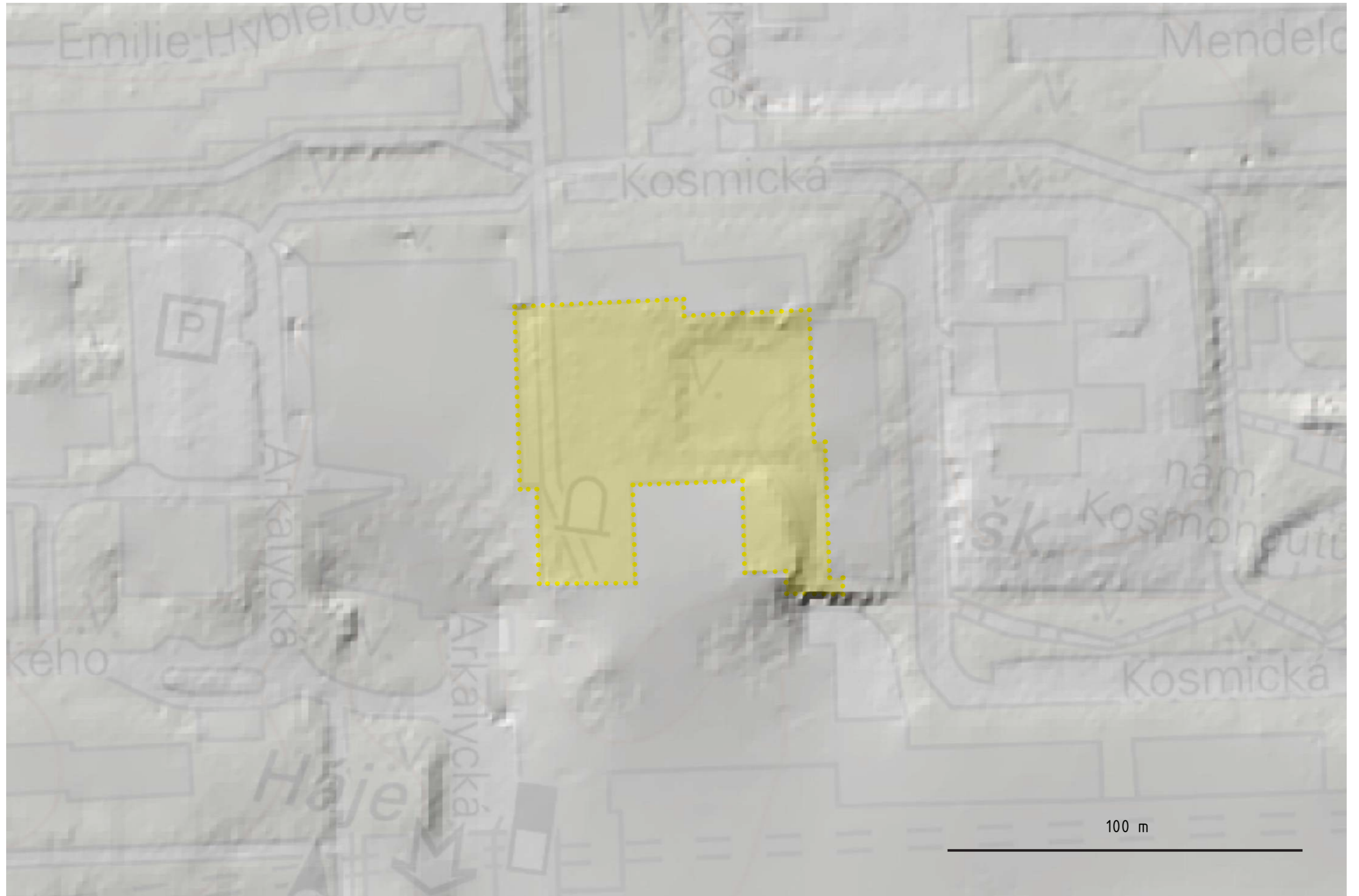


21. 6. 18:58 end of 50% litted space

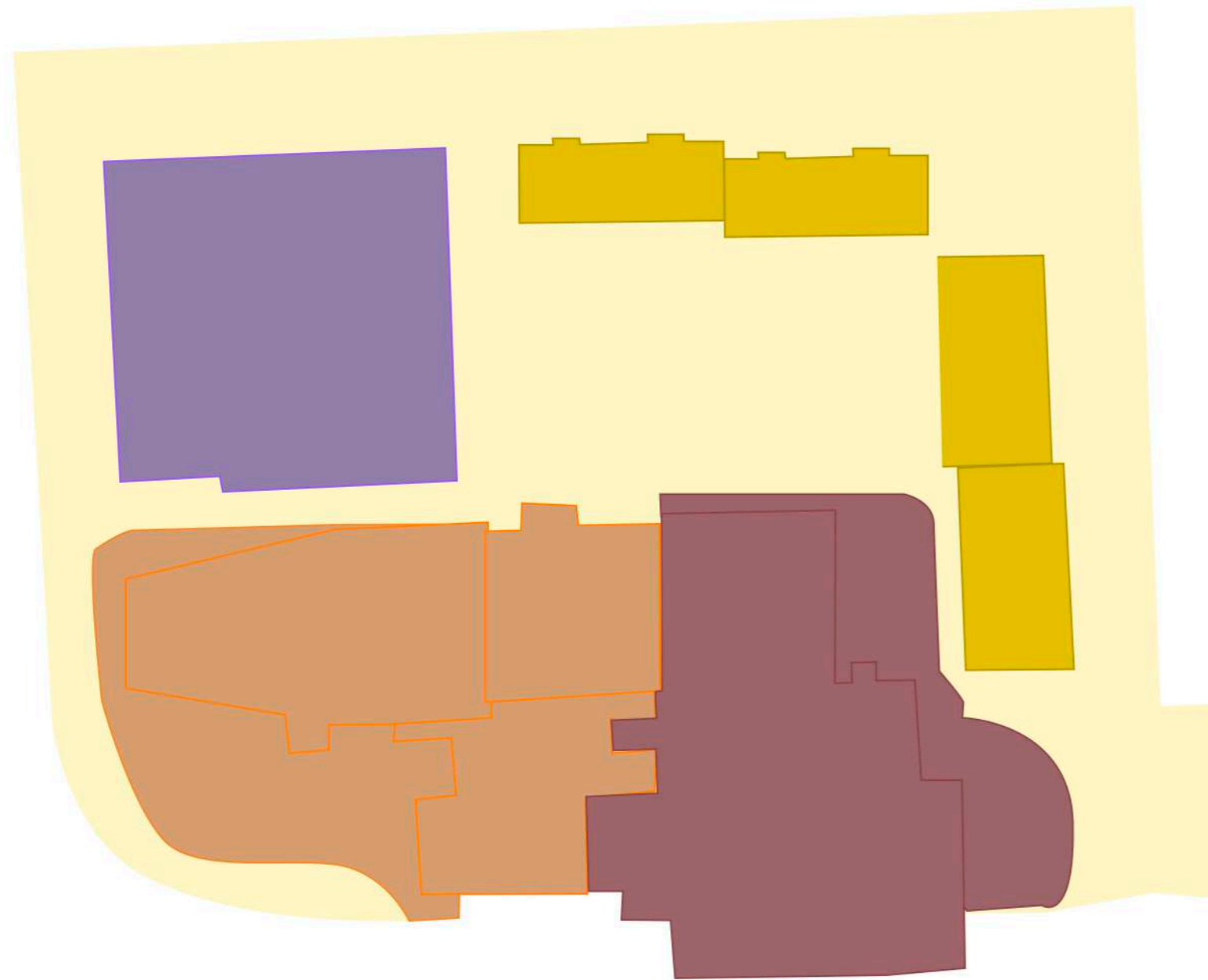


21. 12. 14:12 end of 50% litted space

ANALYSIS: TOPOGRAPHY

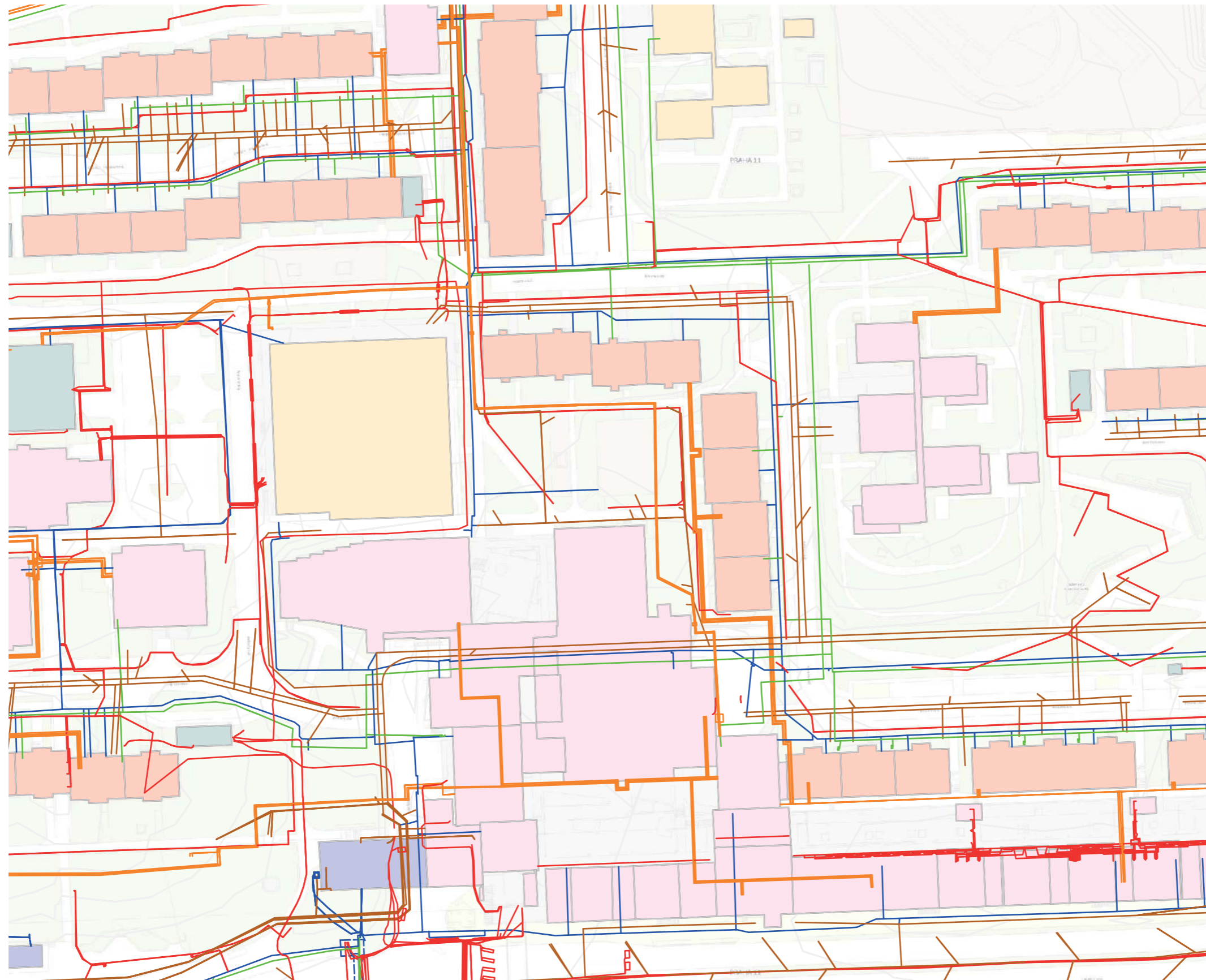


ANALYSIS: OWNERSHIP



- Prague, including its controlled entities without urban districts
- Co-owned by two or more other entities from different ownership groups
- the remaining domestic legal entities
- Multifunctional civic amenities
- Owners not included in other ownership groups

ANALYSIS: ENGINEERING NETWORKS



- VODOVOD
- KANALIZACE
- TEPLOVOD
- ROZVOD PLYNU
- ELEKTRINA

SWOT ANALYSIS

S – STRENGTHS

living space

quantity of shops and services

mature vegetation

close to the metro station

pleasant microclimate under the trees

good transport accessibility

O – OPPORTUNITIES

increasing attractiveness for locals

operating functional road network

rainwater treatment, permeable surfaces

unity of materials

utilization of non-functional space

W – WEAKNESSES

unused spaces

diversity of materials

visual smog (advertising stickers and sheets)

bad permeability through the territories (connection of paths)

bad connection and zone breakdown

bad health of vegetation

impermeable surfaces

insufficient maintenance

T – THREATS

harassment by drunk people, homeless people

injuries at the interface of various surfaces

threats of falling trees

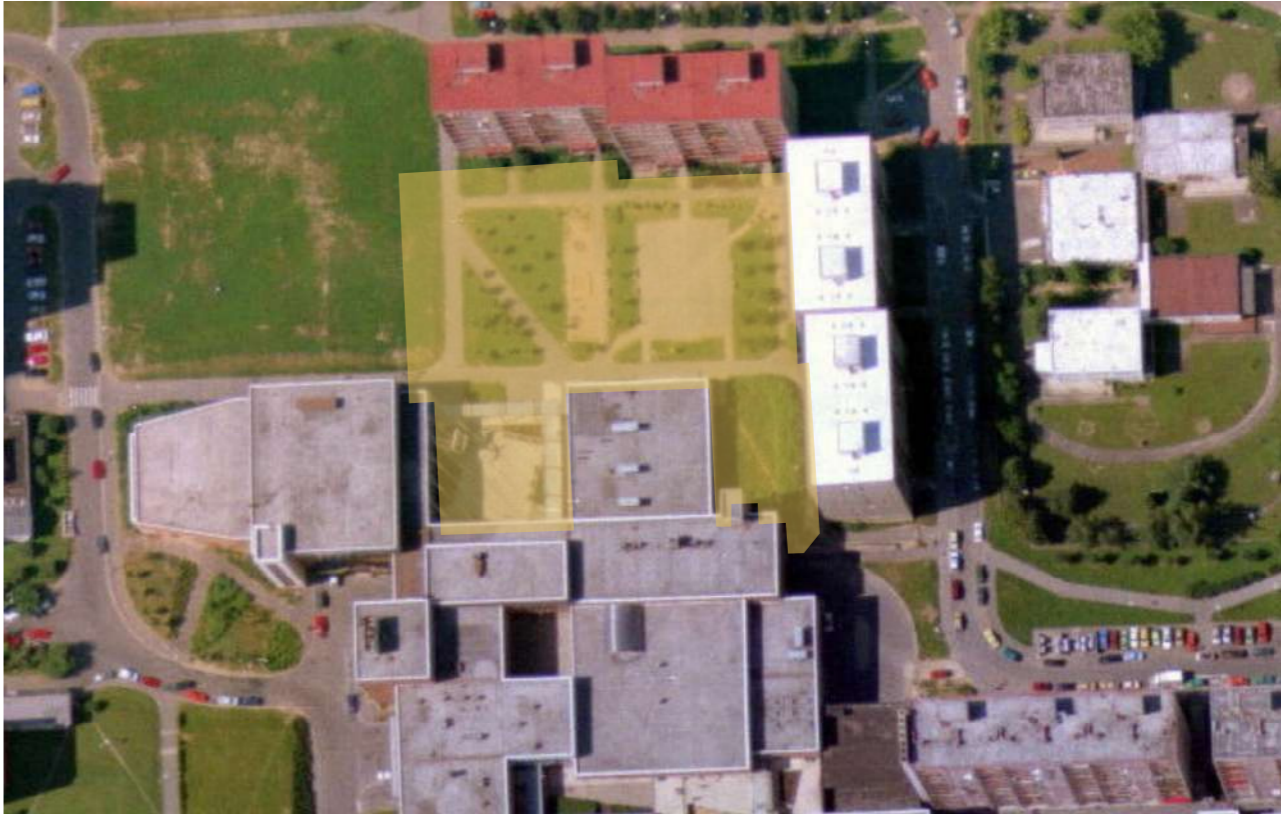
vandalism

the threat of clutter

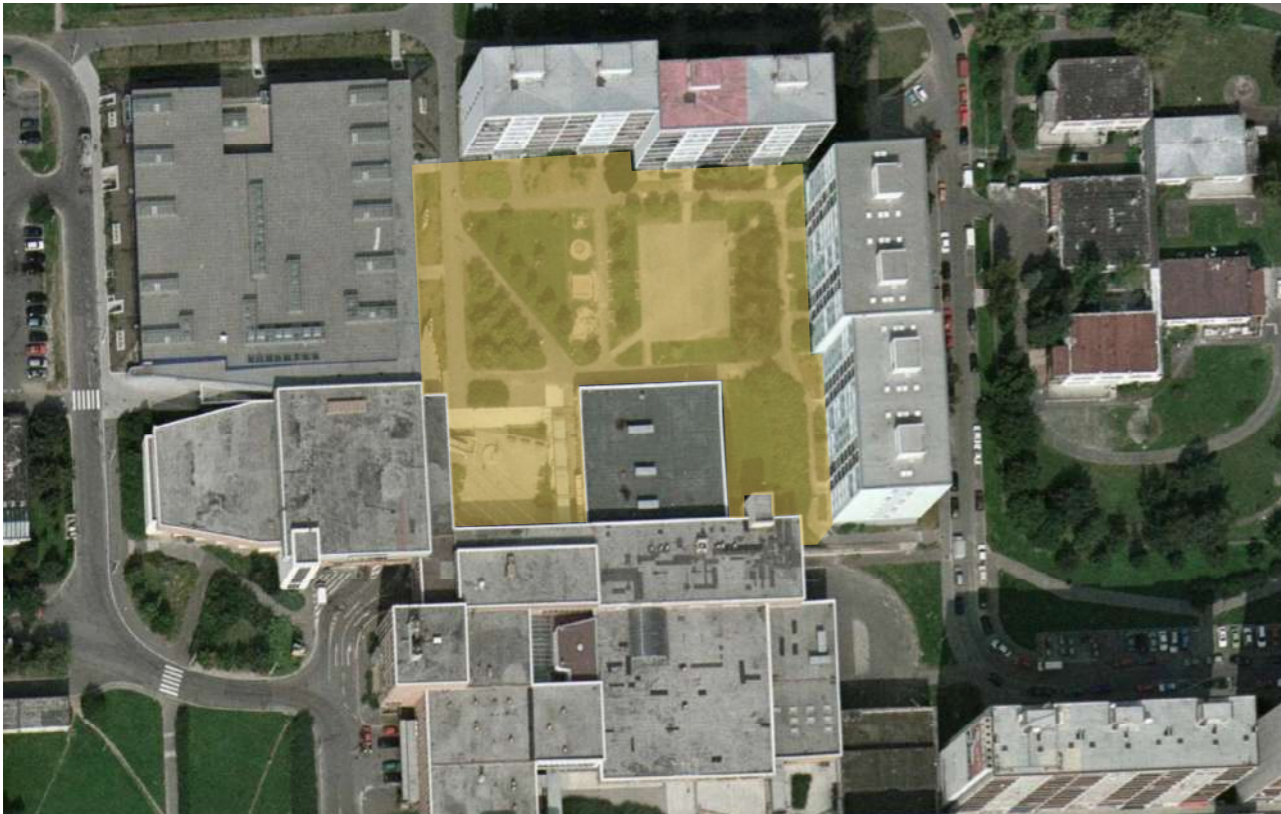
HISTORICAL ORTOPHOTO



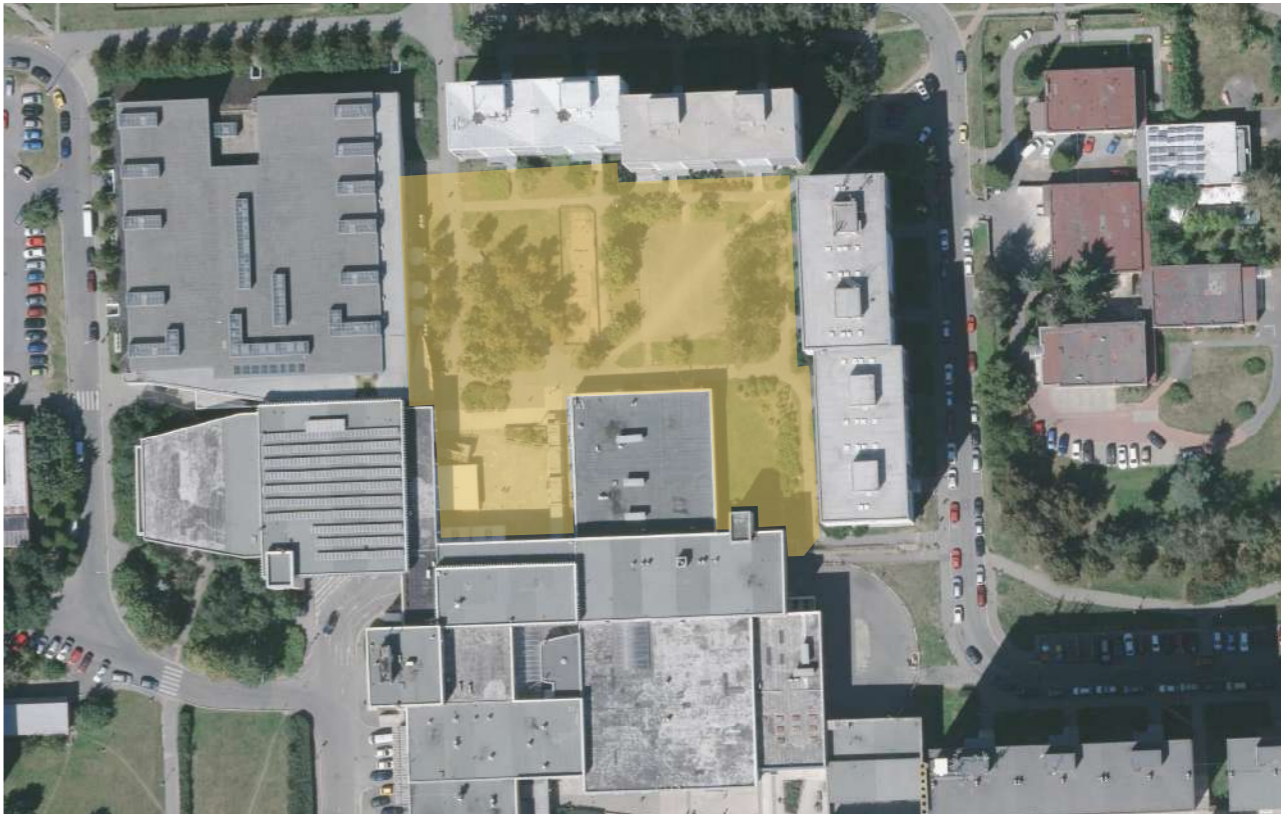
1975



1996



2002



2016

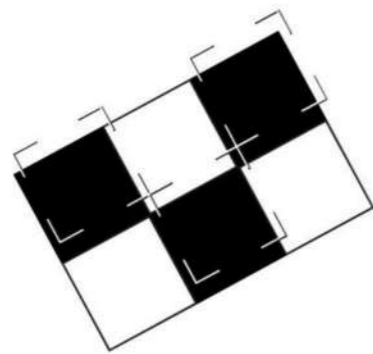
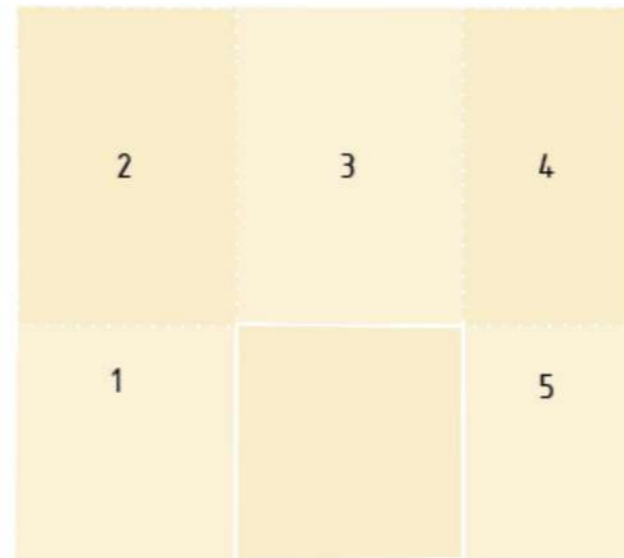
CONCEPT KEYWORDS

CHEQUERED HISTORY
CHEQUERED AREA
CHEQUERED ZONING



ZONING

- 1_PUBLIC PLAZA
- 2_PUBLIC BOSKET
- 3_WAVY LANDSCAPE
- 4_NEIGHBOUR BOSKET
- 5_REFRESHMENT ZONE

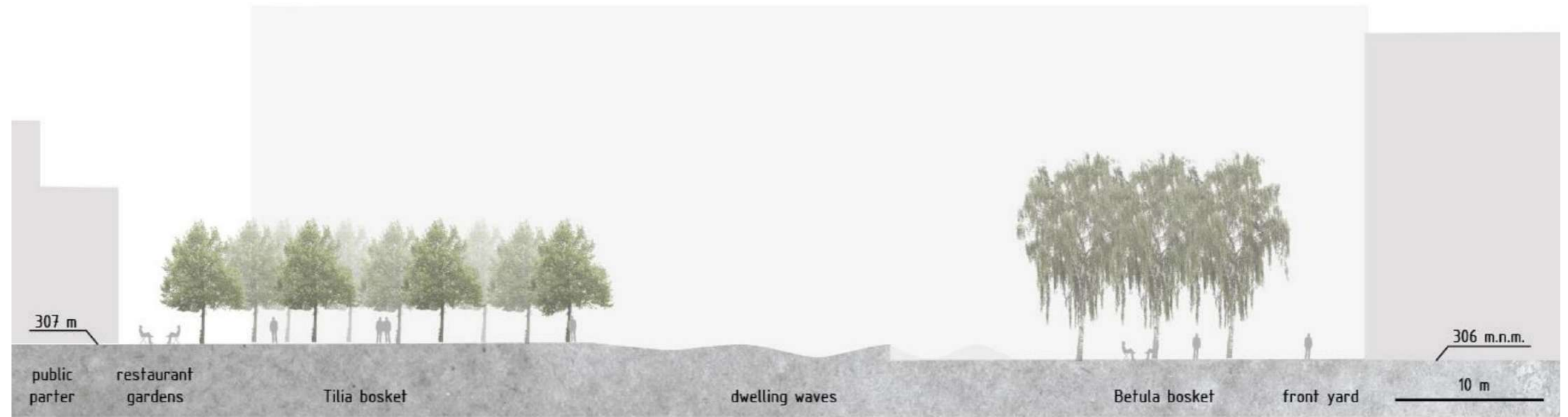




SITE PLAN scale 1:500



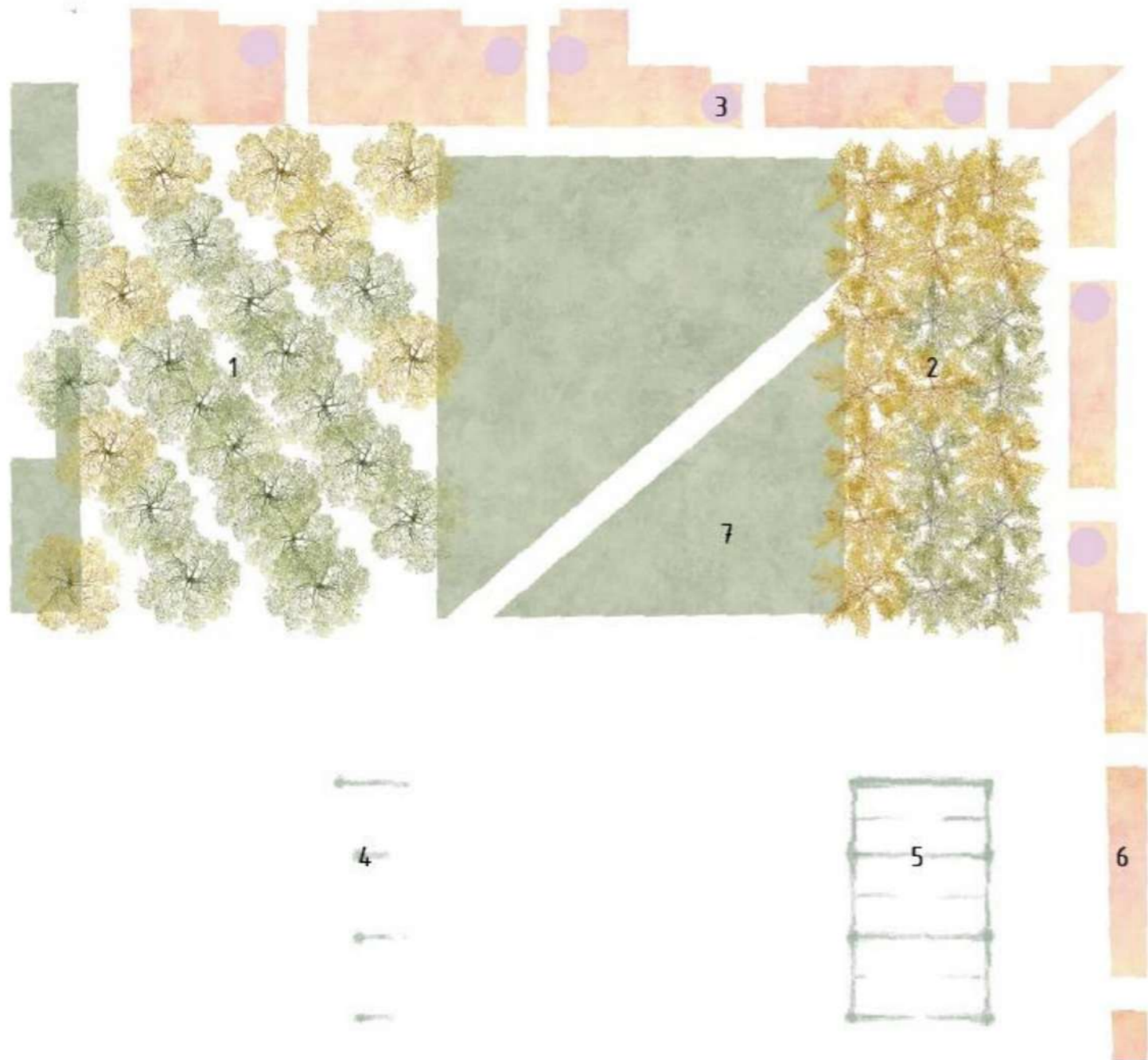
SECTION VIEW A-A' scale 1:250



SECTION VIEW B-B' scale 1:250



VEGETATION



TREES



1) *Tilia cordata*



2) *Betula pendula*

SHRUBS



3) *Syringa vulgaris*

VINE



4) *Lonicera periclymenum*



5) *Aristolochia macro-*

PERENNIALS



6) *Red low prairie*

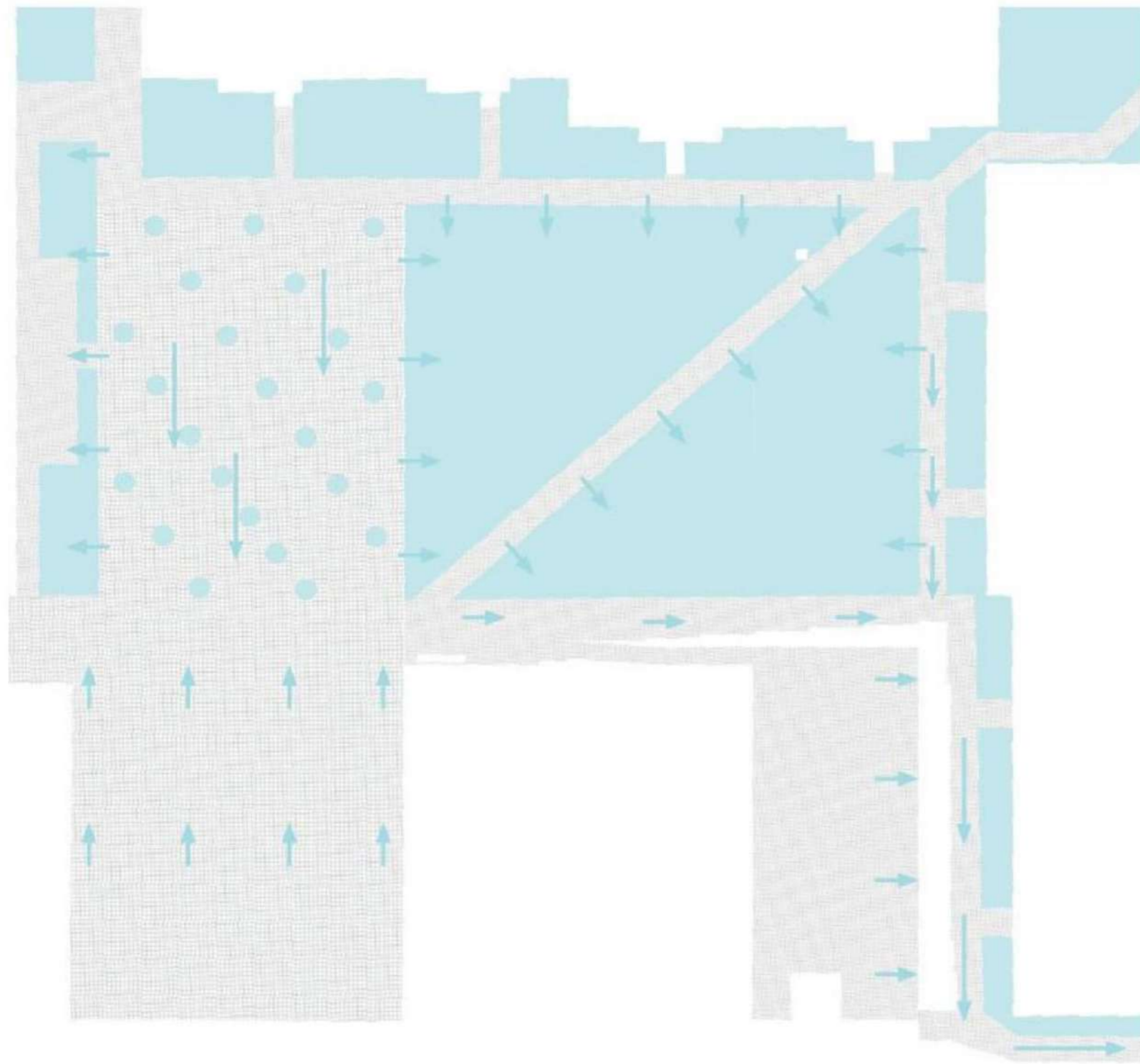


7) *Crocus flavus*
& *Cornus chrysanthus*



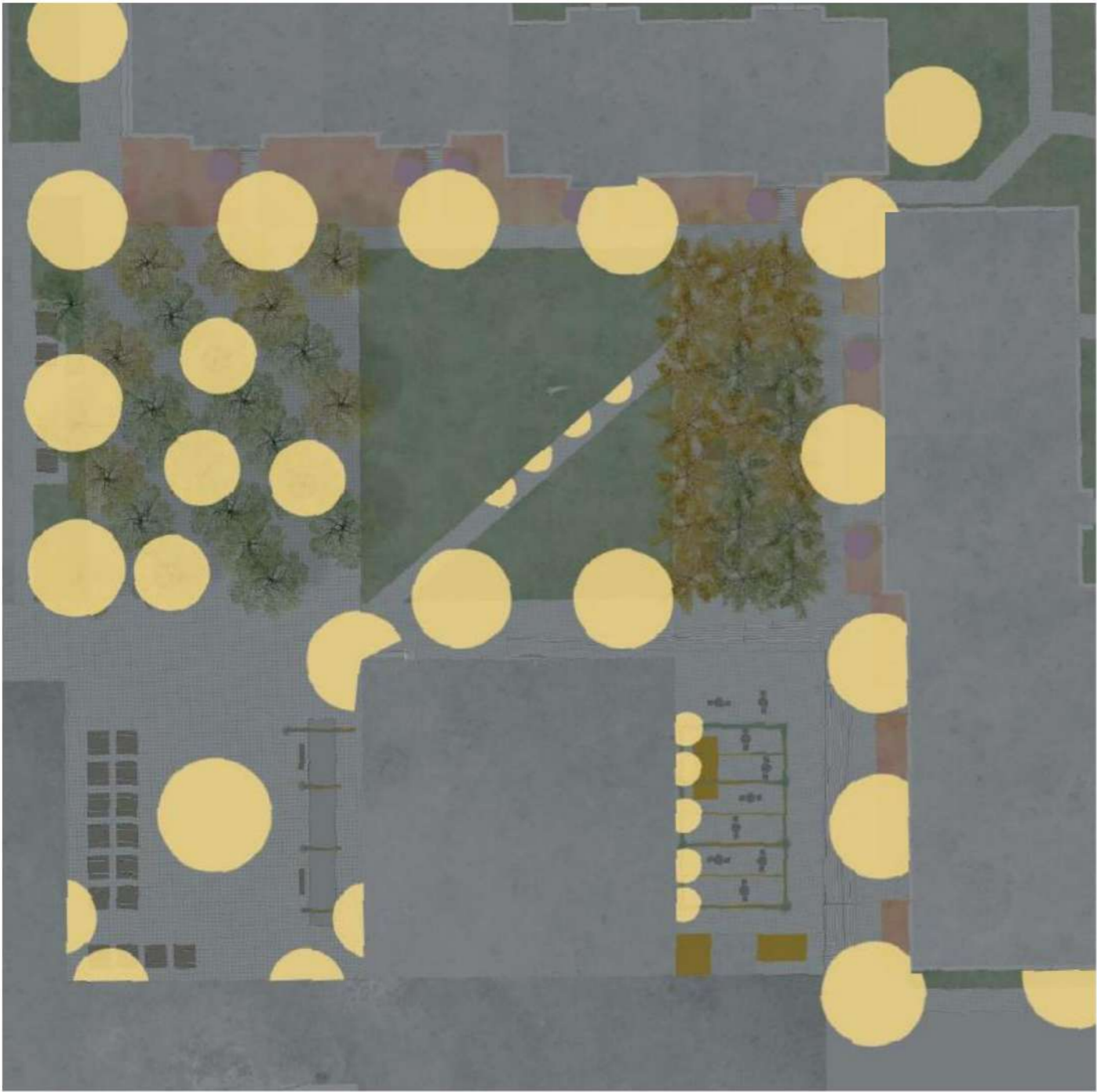
7) *Corcus napolitanus*

RAINWATER MANAGEMENT SCHEME



- permeable surfaces
(parkdekor, lawn, flowerbeds)
- Impermeable surfaces
(large and small format pavers)

PUBLIC LIGHTING



light under the bench



'metro' light pole



suspended lights

MODEL



